

5.3 OPERATING MODES

The Tow-Pro® Elite offers two modes of operation — **Proportional** and **User Controlled**. On the first application of power to the black wire, the Tow-Pro® Elite will start-up in Proportional mode. Every time a trailer is connected, the Tow-Pro® Elite will start up in the mode that was last selected (provided the black wire has remained connected to power/battery positive).

5.3.1 PROPORTIONAL MODE (BLUE LED)

If the status indication LED on the control knob is glowing BLUE, the Tow-Pro® Elite is in **Proportional Mode**.

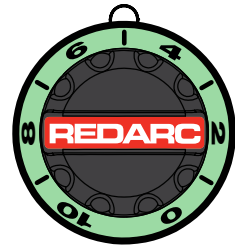
In Proportional Mode, the Tow-Pro® Elite will apply the trailer brakes at a level proportional to the vehicle deceleration. The control knob setting, 0 to 10, will set the brakes from a lighter to a heavier trailer brake application. Simply put, **the harder the vehicle brakes are applied, the harder the trailer will brake**. This mode is designed for highway travelling or everyday use and requires minimal input from the user whilst travelling.



5.3.2 USER CONTROLLED MODE (GREEN LED)

If the status indication LED on the control knob is glowing GREEN, the Tow-Pro® Elite is in **User Controlled Mode**.

In User Controlled Mode, the Tow-Pro® Elite will apply the trailer brakes to the level set by the user on the gain control knob. The control knob setting, 0 to 10, will set the brakes from Zero to Full trailer brake application. Simply put, **the trailer will brake to the level set by the control knob (regardless of how hard the vehicle brakes)**. This mode is often preferred for off road or precision use and may require frequent attention from the user.

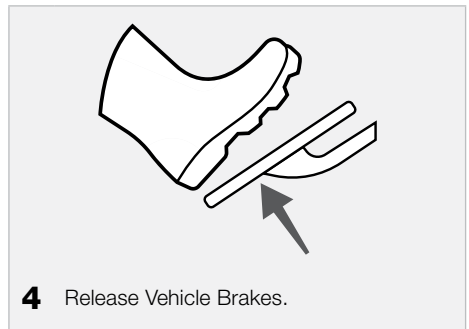
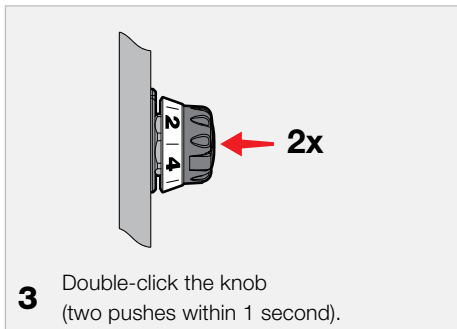
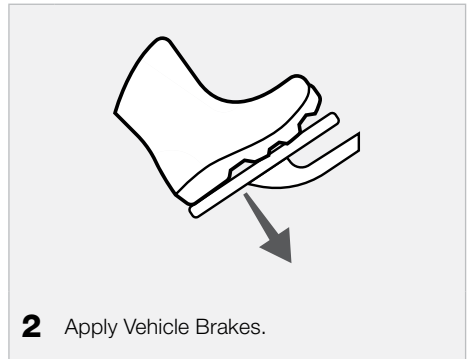
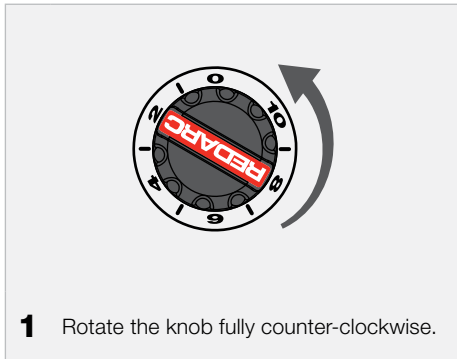


NOTICE: It is important to consider the road surface and conditions when selecting a mode and level setting. When changing conditions we advise to review your controller settings and adjust according to your preference.

5.3.3 CHANGING MODES

Changing modes can only be completed with a trailer connected. Ensure the vehicle has come to a complete stop before beginning the mode change process.

Changing between modes requires the user to complete the following process:



NOTICE: If you are unable to change modes, check that the remote head is not installed into a panel which is too thick and that the button is able to be depressed fully. Refer to [Section 4.4 \(page 15\)](#) for details.

Ensure you reset the Control Knob to a suitable braking level after changing modes.