

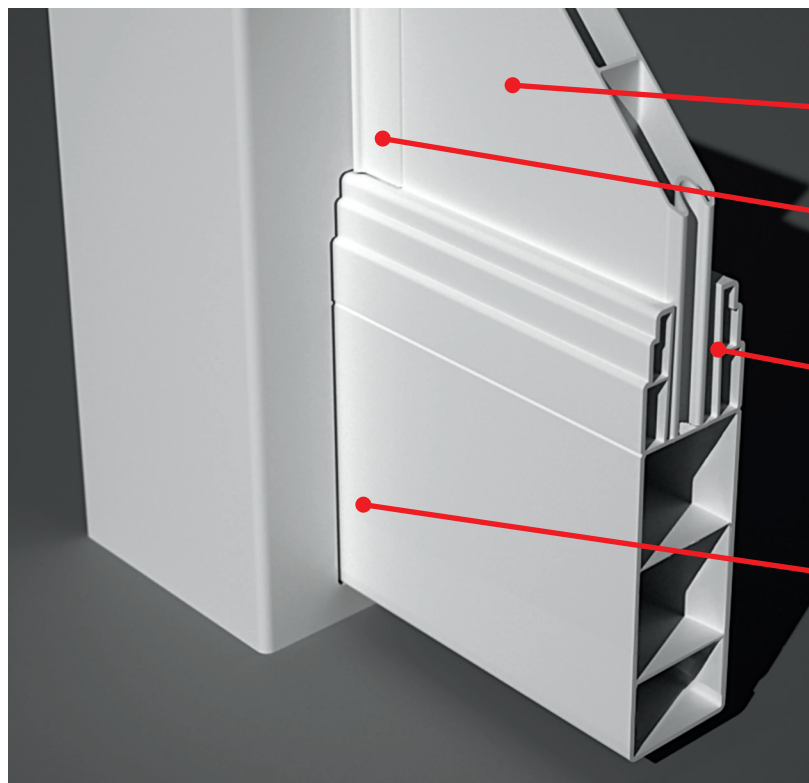


Sun Rail Series Privacy Fence

Long Lasting, Maintenance-Free Beauty

Sun Rail Series Privacy Fence

*Created to be the perfect blend of sophistication, elegance, strength and performance. The **Sun Rail Series Privacy Fence** is engineered with clean, elegant lines and high-quality materials. The **Sun Rail Series Privacy Fence** will provide you with long-lasting beauty and performance while adding value to your home. Whether you are looking to create a secluded, private backyard oasis to simply relax in, or if you looking to create a unique space for entertaining, **The Sun Rail Series Privacy Fence** is the perfect fence choice for your home. Backed by a Lifetime Limited Warranty, it will be the last fence your home will ever need.*



7/8" x 6" Tongue & Groove pickets interlock to create a strong joint to withstand the test of time.

End spacer cap ensures no gaps where Tongue & Groove pickets meet the post. The unique shape design prevents it from falling down into the rail.

2" deep pocket allows greater picket penetration and overlap which provides greater strength and less chance for T&G pickets to come out, while allowing greater racking and sloping ability of the fence section panel for a perfect installation.

Rail locking tabs hold rails securely into the precisely routed post via a computer controlled routing machine. No use of screws to rust, weaken or become loose over time.

***Long Lasting Beauty and Maintenance-Free Performance.
The last fence your home will ever need.***

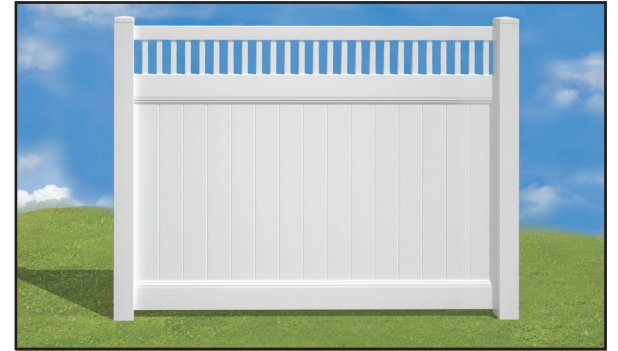
Privacy Styles



Solid Privacy



Lattice Top



Closed Spindle Top



Open Spindle (Straight Top)



Scallop Spindle Top

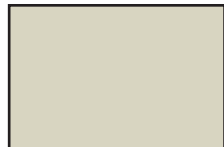


Solid Privacy Double Drive Gate

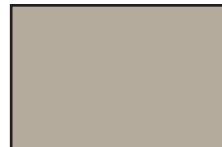
Color Options



White



Tan



***Clay**

**Not all Picket Styles and Semi-Privacy Styles are available in Clay Color.*



Lattice Top Single Walk Gate

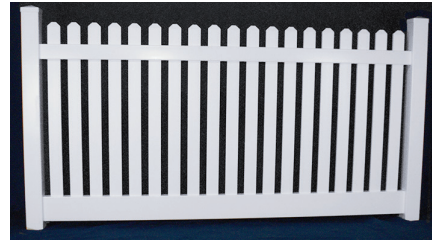
Picket Styles

Cape Cod (Narrow Space)



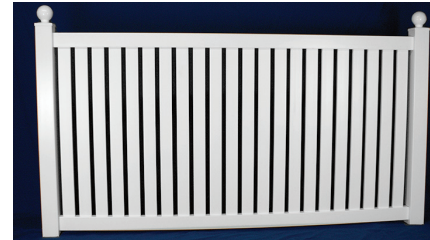
Rails: 2" x 3-1/2" Top Rail
2" x 6" Bottom Rail
Pickets: 7/8" x 3" Pickets
Narrow Picket Space=1-3/4"

Gettysburg (Narrow Space)



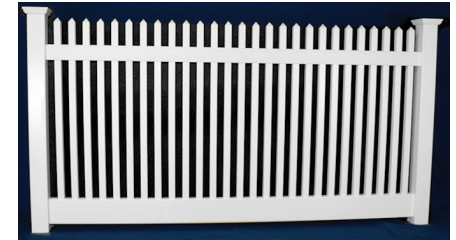
Rails: 2" x 3-1/2" Top Rail
2" x 6" Bottom Rail
Pickets: 7/8" x 3" Pickets
Narrow Picket Space=1-3/4"

Imperial (1.00 space)



Rails: 2" x 3-1/2" Top & Bottom Rail (Reinforced)
2" x 3-1/2" Mid Rail (on 6' ht. only)
Pickets: 7/8" x 3" Pickets
Picket Space = 1"

New England (Straight Top)



Rails: 2" x 3-1/2" Top Rail
2" x 6" Bottom Rail
Pickets: 1-1/2" x 1-1/2" Pickets
Picket Space=1-3/4"

Cape Cod (Wide Space)



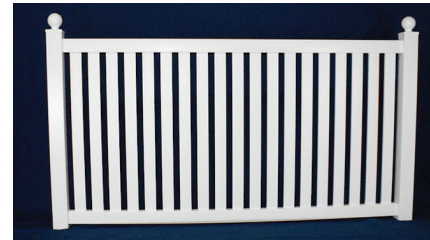
Rails: 2" x 3-1/2" Top Rail
2" x 6" Bottom Rail
Pickets: 7/8" x 3" Pickets
Wide Picket Space=3-1/4"

Gettysburg (Wide Space)



Rails: 2" x 3-1/2" Top Rail
2" x 6" Bottom Rail
Pickets: 7/8" x 3" Pickets
Wide Picket Space=3-1/4"

Imperial (1.66 space)



Rails: 2" x 3-1/2" Top & Bottom Rail (Reinforced)
2" x 3-1/2" Mid Rail (on 6' ht. only)
Pickets: 7/8" x 3" Pickets
Picket Space = 1-5/8"

New England (Stepped Top)



Rails: 2" x 3-1/2" Top Rail
2" x 6" Bottom Rail
Pickets: 1-1/2" x 1-1/2" Pickets
Picket Space=1-3/4"

Picket Cap Styles



Dog Ear



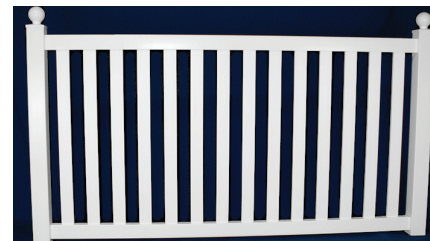
Spade

Lexington (3.58 Space shown)



Rails: 2" x 3-1/2" Top & Bottom Rail (Reinforced)
2" x 3-1/2" Mid Rail (on 6' ht. only)
Pickets: 1-1/2" x 1-1/2" Pickets
Picket Space = 3-5/8"

Imperial (3.38 space)



Rails: 2" x 3-1/2" Top & Bottom Rail (Reinforced)
2" x 3-1/2" Mid Rail (on 6' ht. only)
Pickets: 7/8" x 3" Pickets
Picket Space = 3-3/8"

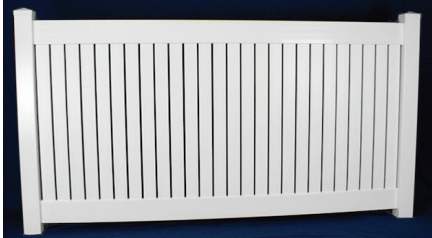
New England (Scalloped Top)



Rails: 2" x 3-1/2" Top Rail
2" x 6" Bottom Rail
Pickets: 1-1/2" x 1-1/2" Pickets
Picket Space=1-3/4"

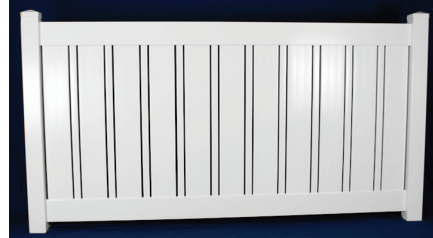
Semi-Privacy Styles

3" Semi-Privacy



Rails: 1-1/2" x 5-1/2" Top & Bottom Rail (Reinf)
2" x 3-1/2" Mid Rail (on 6' ht. only)
Pickets: 7/8" x 3" Pickets Picket Space = 1/2"

Alternating Picket

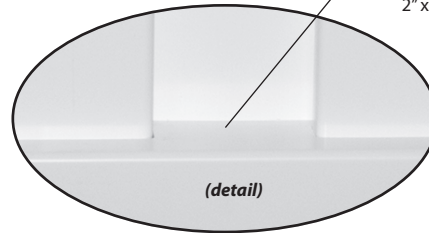


Rails: 1-1/2" x 5-1/2" Top & Bottom Rail (Reinf)
2" x 3-1/2" Mid Rail (on 6' ht. only)
Pickets: 7/8" x 6" & 7/8" x 1-1/2" Picket Space=1/2"

Board on Board



Rails: 4" x 4" Top & Bottom Rail
2" x 3-1/2" Mid Rail (on 6' ht. only)
Pickets: 7/8" x 6" Pickets



6" Semi-Privacy



Rails: 1-1/2" x 5-1/2" Top & Bottom Rail (Reinf)
2" x 3-1/2" Mid Rail (on 6' ht. only)
Pickets: 7/8" x 6" Pickets Picket Space = 1/2"

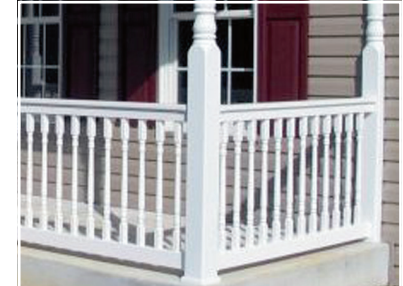
Railing Styles

36" Square Spindle Railing



Rails: 3-1/2" x 3-1/2" T-Rail Top 2" x 3-1/2" Bottom Rail
Pickets: 1-1/2" x 1-1/2" Pickets Picket Space = 3-5/8"

36" Colonial Spindle Railing



Rails: 3-1/2" x 3-1/2" T-Rail Top 2" x 3-1/2" Bottom Rail
Pickets: 1-1/2" Colonial Spindles Picket Space = 3-5/8"

Ranch Rail Styles

2-Rail Ranch



Rails: 1-1/2" x 5-1/2"
16ft long rails 10-1/2" between rails

3-Rail Ranch



Rails: 1-1/2" x 5-1/2"
16ft long rails 11" between rails

4-Rail Ranch



Rails: 1-1/2" x 5-1/2"
16ft long rails 8-1/2" between rails



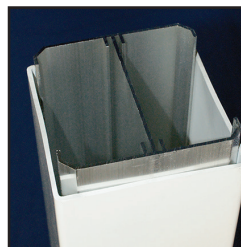
Gate Hardware



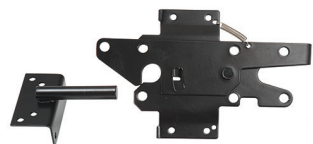
Stainless Steel Hinges



**Self-Closing
Multi-Adjust
Hinges**



**Aluminum Post
Stiffener**



Two-Sided Latch



**Key Lockable
Lock Latch**



Spring Gate Wheel



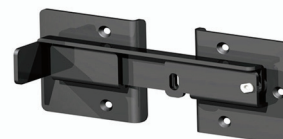
**Nylon Gate
Handle**



**Stainless Steel
Drop Rod
For Double
Gates**

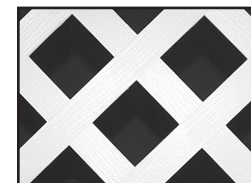


**Top Pull
Key-Lockable
Pool Code
Latch**

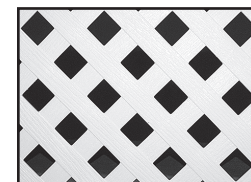


Dumpster Flip Latch

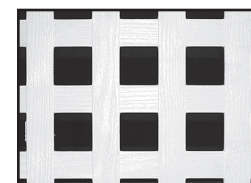
Lattice Options



**Standard Large Diagonal-
White, Tan and Clay**



**Optional Small Diagonal
White Only**



**Optional Square Lattice
White Only**

Post Cap Options



External



New England



Ball



Gothic



Coachman

LIFETIME WARRANTY

Sun Rail Series
Privacy Fence is sure
to stand the test of time.
Our White, Tan and Clay
fence materials are covered by
a Lifetime Limited Warranty.



Sun Rail Series Privacy Fence Professionally Installed By:

Manufactured Locally in Westville, NJ 08093