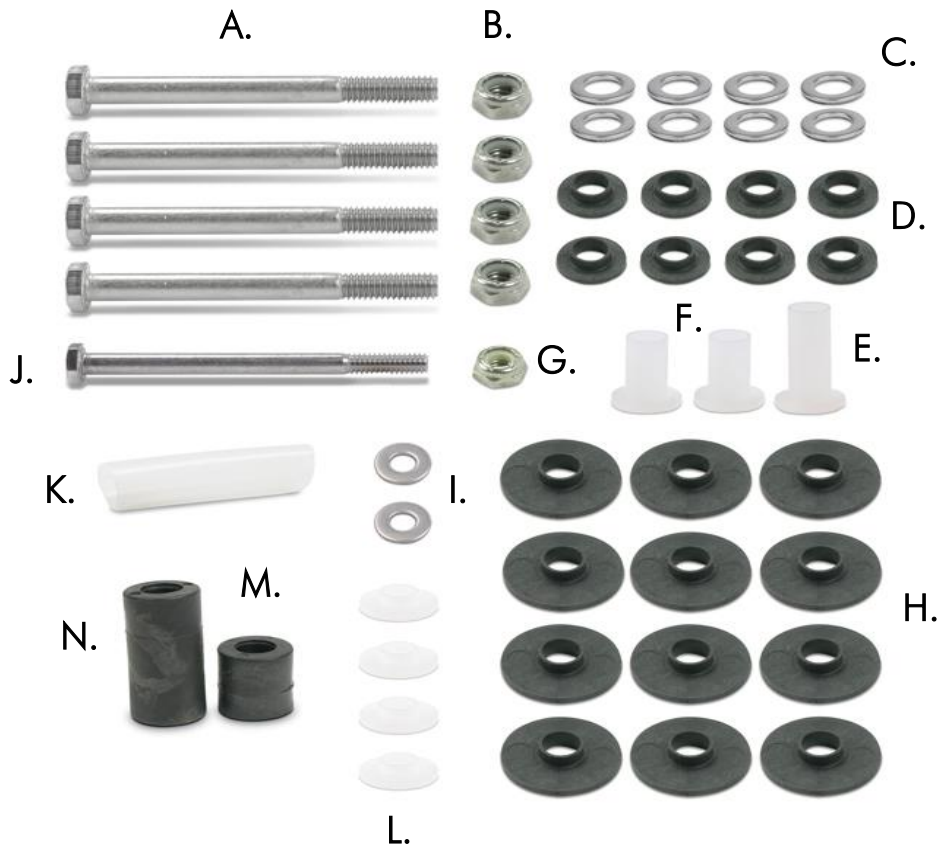


## Complete Bolt Set for Power-Pole with 1/4" Bolt

Compatible with the following:  
 Power-Pole 6' 2008 & Earlier  
 Power-Pole Sportsman Series 6' 2009 & 2010

### Hardware

- A. Qty (4) 5/16" x 3.5" Power-Pole Bolts & Ram Bolt
- B. Qty (4) 5/16" Low-profile nuts
- C. Qty (8) small washers
- D. Qty (8) small black bushings
- E. Qty (1) long white bushing
- F. Qty (2) short white bushings
- G. Qty (1) 1/4" Low profile nut
- H. Qty (12) large black bushings
- I. Qty (2) 1/4" washers
- J. Qty (1) 1/4" stern bracket bolt
- K. Qty (1) tubing stern bracket Teflon
- L. Qty (4) small white bushings
- M. Qty (1) small cylinder ram spacer
- N. Qty (1) large cylinder ram



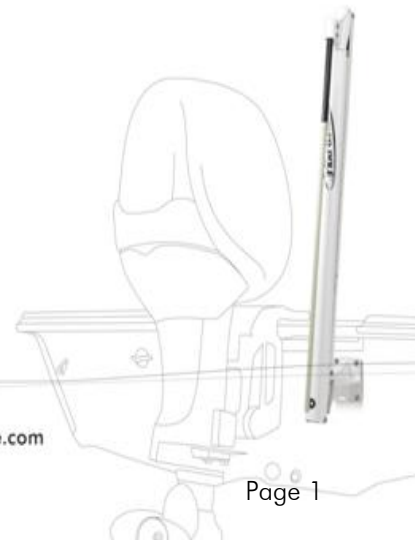
## Installation Tools

- 7/16" & 1/2" Socket with Ratchet
- 7/16" & 1/2" Wrench
- Pliers
- Hammer
- Drill ( Only if knuckle has 1/4" bolt )
- 3/8" steel drill bit for drill if needed

## Installation of Bolt Set Complete Power-Pole with 1/4" bolt

Please follow the installation instructions for each section 1 through 3.

For technical support please call 813-689-9932 opt 2.

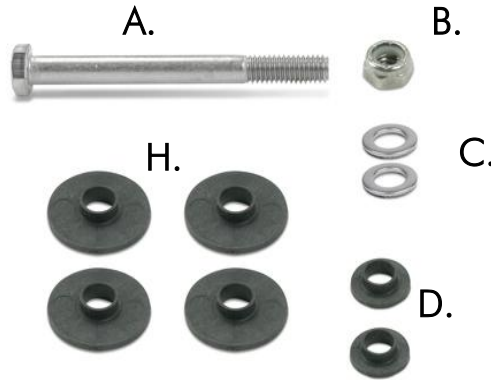


## Knuckle Bolt Set 5/16" Upper or Lower ( Section 1 )

### Installation Tools

### Hardware

- A. Qty (1) 5/16 x 3.5" Knuckle bolt
- C. Qty (2) small washers
- D. Qty (2) small black bushings
- H. Qty (4) large black bushings
- B. Qty (1) low-profile mounting nut

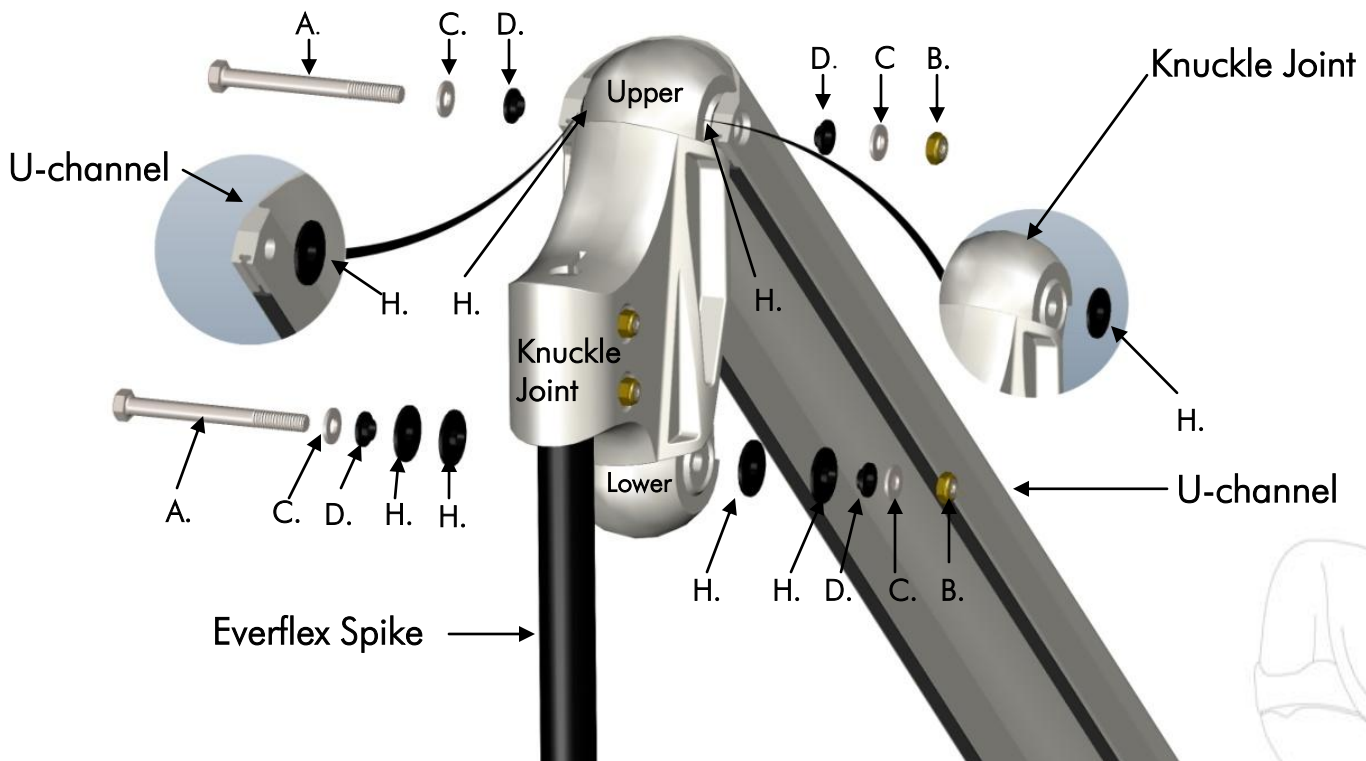


- 1/2" Socket with Ratchet
- 1/2" Wrench
- Drill ( Only if knuckle has 1/4" bolts )
- 3/8" Steel Drill Bit

Note: If existing Power-Pole Knuckle has a 1/4" bolt you will need to drill it out with 3/8" steel drill bit.

### Installation Instructions:

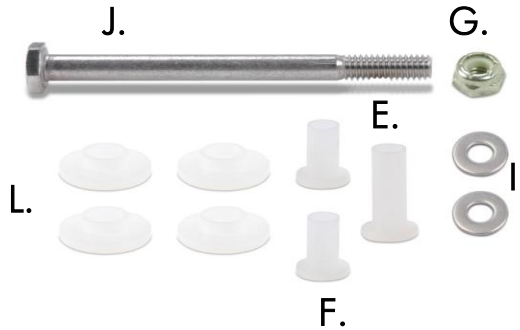
- Step 1 Remove old bolt and bushings with installation tools. *Note:* Installation tools not included.
- Step 2 Insert large black bushings H with small flange facing hole on the outside of the Knuckle and inside of the U-channel.
- Step 3 Put washer C on bolt A. Next put small black bushing D on the bolt A with the flat side facing towards washer C.
- Step 4 Install knuckle in-between U-channels as pictured below with flat side of bushings H touching and aligning the hole.
- Step 5 Insert the dressed bolt A through the U-channel and Knuckle.
- Step 6 Put small black bushing D onto bolt A with small flange facing towards U-channel hole followed by washer C.
- Step 7 Finish by threading nut B on and tighten to 48 inch pounds / 4 foot pounds of torque.



## Stern Bracket Bolt Set 1/4" Upper Bolt Only (Section 2)

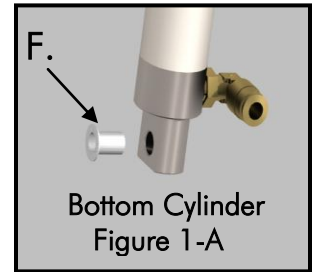
### Hardware

- J. Qty (1) 1/4" x 3.5" Stern Bracket Bolt
- I. Qty (2) 1/4" washers
- L. Qty (4) small white bushings
- E. Qty (1) long white bushing
- F. Qty (2) short white bushings
- G. Qty (1) 1/4" Low-profile mounting nut.



### Installation Tools

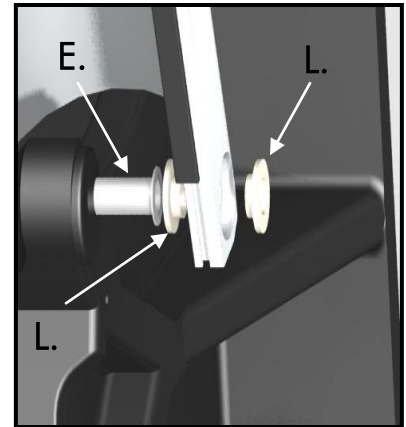
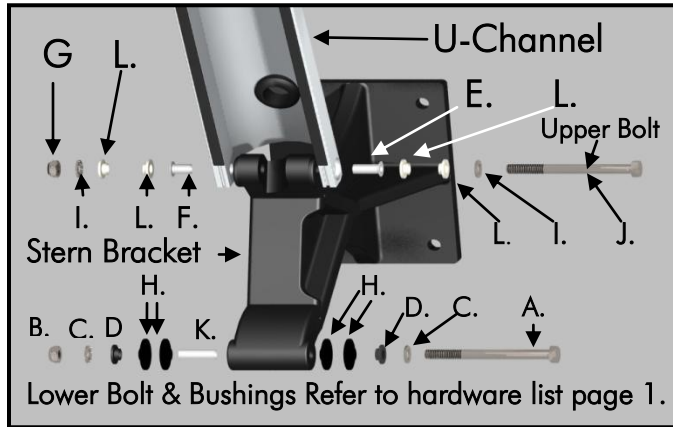
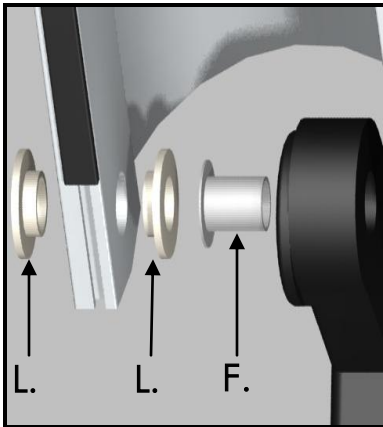
- 7/16" Socket with Ratchet
- 7/16" Wrench
- Pliers



Left View of Stern Bracket  
Figure 2-A

Stern Bracket  
Figure 3-A

Right View of Stern Bracket  
Figure 4-A



### Installation Instructions:

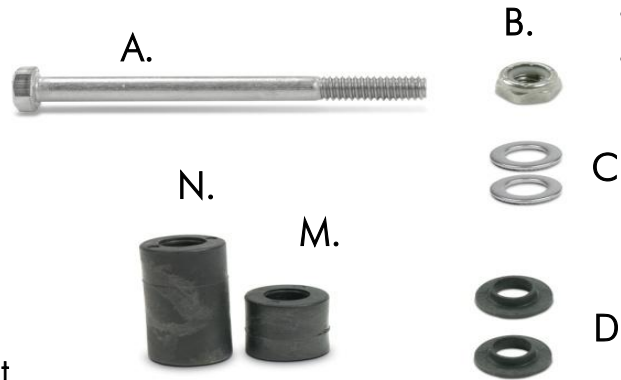
- Step 1 Remove old 1/4" bolt, bushings and remove hydraulic cylinder from stern bracket only. *Note: you do not need to disconnect hydraulic lines from hydraulic cylinder.*
- Step 2 Remove old bushing F from bottom of cylinder and replace with new bushing F Figure 1-A.
- Step 3 Insert bushings F and E into the stern brackets Figures 2-A and Figure 4-A.
- Step 4 Insert bushings L into the insides of u-channel with small flange facing towards hole Figures 2-A and 4-A.
- Step 5 Put washer I onto bolt J. Next put small bushing L onto bolt J with flat side facing in towards washer I.
- Step 6 Install u-channel onto stern bracket Figure 3-A with bushing touching and aligning each hole.
- Step 7 Insert the dressed bolt J through the u-channel, stern bracket, and hydraulic cylinder.
- Step 8 Put small bushing L onto bolt J with small flange facing in towards u-channel hole followed by washer I.
- Step 9 Finish by threading nut G on and tighten to 72 inch pounds / 6 foot pounds of torque upper and lower bolt.

## Cylinder Bolt Set 5/16" ( Section 3 )

### Installation Tools

### Hardware

- A. Qty (1) 5/16 x 3.5" cylinder ram bolt
- C. Qty (2) small washers
- D. Qty (2) cylinder ram bolt bushings
- N. Qty (1) large cylinder ram spacer
- M. Qty (1) small cylinder ram spacer
- B. Qty (1) 5/16" low-profile mounting nut



- 1/2" Socket with Ratchet
- 1/2" Wrench
- Pliers

### Installation Instructions:

- Step 1 Remove old bolt and bushings with installation tools.
- Step 2 Insert bolt A through washer C with flat side of bushing D facing in towards washer C.
- Step 3 Insert dressed bolt A through U-channel and large ram spacer N. *Note:* large ram cylinder spacer should be on the same side as the 90 degree fitting on cylinder.
- Step 4 Push remaining bolt A on through hydraulic cylinder ram, small bushing ram spacer M and U-channel.
- Step 5 Place small black bushing D onto bolt A with small flange facing in towards the U- channel hole followed by washer C.
- Step 6 Finish by threading nut B on and tighten to 48 inch pounds / 4 foot pounds of torque.

