

**IMPORTANT!
REGISTER YOUR NEW DRIFT PADDLE**



To validate your warranty, register your new product online at www.power-pole.com or fill out and submit this registration card.

Name _____

Address _____

City _____ State _____ Zip _____

Email address _____

Date of purchase _____ Age _____

Place of purchase _____

Type of boat _____ Length _____

I have read and understand the warranty of this product.

Signature _____



Congratulations on your purchase of the Power-Pole Drift Paddle.

NOTE: Once the Drift Paddle has been installed on your Power-Pole anchor be sure to rotate the paddle to 90° when running on the water or trailering on the highway to reduce wind resistance and reduce risk of damage to your Power-Pole.

Installation Instructions

Step 1 Install the mounting stirrup

Remove the 2, 1/4" bolts from the knuckle of the Power-Pole. (Figure 1)

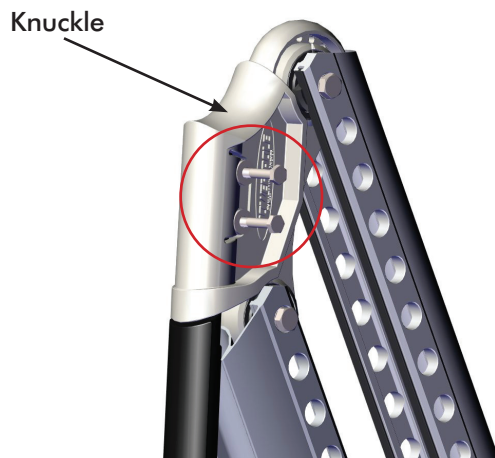


Figure 1

Installation Instructions

Step 2 Attach the Drift Paddle Stirrup mount to the knuckle using the supplied hardware. This hardware needs to go in the correct order to ensure the stirrup mount does not damage the knuckle or vice versa. (Figure 2)

Proper hardware order:

Flat Washer **A**

Stirrup Mount **B**

Plastic Spacer **C**

White Bushing **D**

slide the bolt through the knuckle then repeat for the other side.

NOTE: There are two sizes of Plastic Spacer (C) supplied. The longer spacer should be used with all Power-Pole Blade installations. The shorter spacer should be used with all other Power-Pole models.

Tighten the bolts down until they are snug, there is no need to over-tighten bolts.

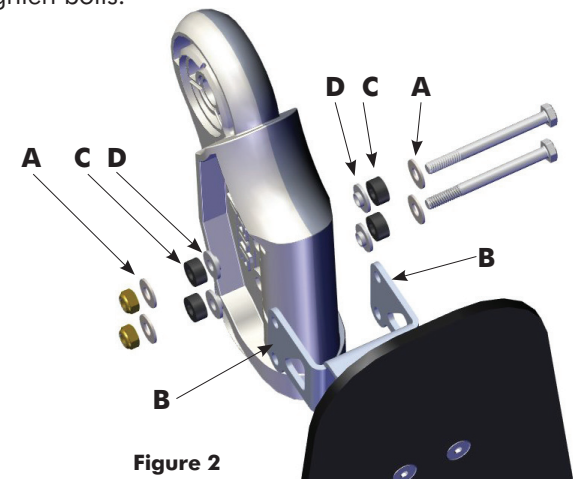


Figure 2

NOTE: Once the Drift Paddle Stirrup has been mounted to the knuckle the Drift Paddle can be attached and removed at the dock or on the water. The stirrup should remain mounted to the Power-Pole knuckle.

Step 3 Attaching the Drift Paddle

Slide the cable loops in the paddle around the bottom tip of the spike (this may require you to open the pole slightly). (Figure 3)

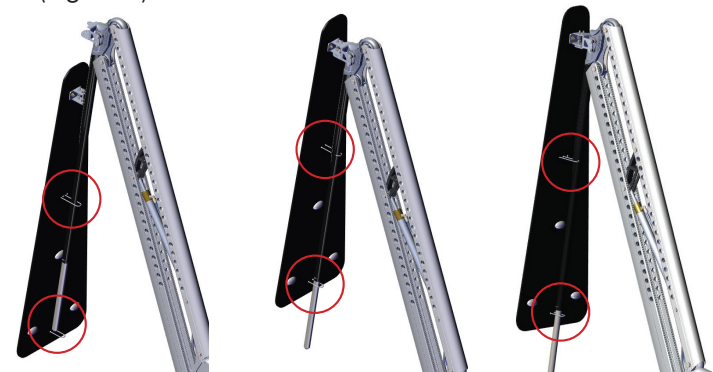


Figure 3

Installation Instructions

Step 4 Align the upper mount of the paddle with the stirrup mount on the knuckle. Pull up the snap-lock pin and line it up with the center locking position hole on the stirrup mount. (Figure 4)

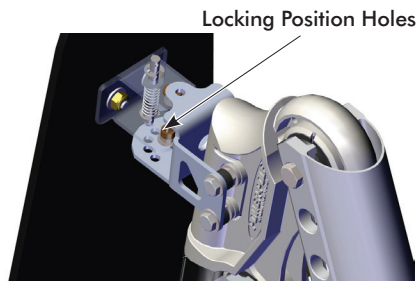


Figure 4

Step 5 Once the snap-lock pin on the upper mount is in the center locking hole, line up the center hole on the upper mount with the top hole of the stirrup mount. Now slide the quick release pin through the holes. (Figure 5)

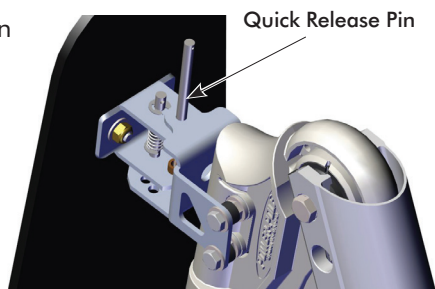


Figure 5

Step 6 Be sure the quick release pin goes all the way through the stirrup mount. (Figure 6)

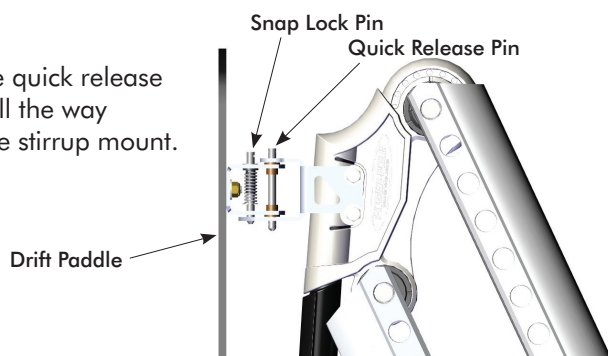


Figure 6

Step 7 The Drift Paddle should now be securely mounted to the Power-Pole (Figure 7)



Figure 7

Now using the snap-lock pin you can rotate the Drift Paddle a full 180° in 30° increments.



PLACE
POST CARD
POSTAGE HERE
Post office will not
deliver without
proper postage.



JL Marine
SYSTEMS, INC.

9208 Palm River Road
Suite 303
Tampa, FL 33619

Two (2) year warranty

Conditions of warranty

The Drift Paddle manufactured by JL Marine Systems Inc., is warranted against defects in material and workmanship to the original owner according to the following stipulations.

1. Drift Paddle warranty is activated on the date of purchase by JL Marine Systems, Inc. You may also **register your Drift Paddle on our web site** or send in the registration card. Please retain your sales receipt as proof of purchase.
2. Install Genuine Power-Pole Merchandise ONLY. This warranty is void if any non authorized parts are used or installed.
3. This warranty is void if the Power-Pole Drift Paddle is used commercially structurally altered or subject to stress beyond the physical limits of the manufactured material.
 1. Parts which prove defective within (90) days from the date of purchase, JL Marine Systems, Inc. will pay for the replacement product shipping and handling fees to and from the JL Marine Systems, Inc. manufacturing plant or some other place which JL Marine Systems, Inc. might designate. Warranty shipping procedures only apply in the continental USA.
 2. Parts which prove defective after (90) days but before (24) months from the date of purchase will also be repaired or replaced free of charge, but there may be a shipping charge to JL Marine Systems, Inc. manufacturing plant or some other place which JL Marine Systems, Inc. might designate. Warranty shipping procedures only apply in the continental USA.

THE WARRANTY CONTAINED HEREIN IS THE EXCLUSIVE WARRANTY MADE BY JL Marine Systems, Inc. AND THERE ARE NO OTHER WARRANTIES, EXPRESSED OR IMPLIED, INCLUDING A WARRANTY OF FITNESS FOR A PARTICULAR PURPOSE OR OF MERCHANTABILITY MADE WITH RESPECT TO SUCH ANCHORS. JL Marine Systems, Inc. IS NOT LIABLE FOR ANY INJURY OR MISHAPS SUSTAINED IN THE USE OF THIS PRODUCT. THE USER OF THIS PRODUCT ACKNOWLEDGES ASSUMED RISKS AND WAIVES ANY AND ALL CLAIMS AGAINST JL Marine Systems, Inc. AND ANY OF IT'S AGENTS.

This warranty applies under conditions of normal use. The warranty does not cover:

- 1) defects caused by improper assembly or disassembly;
- 2) defects occurring after purchase due to product modification, intentional damage, accident, misuse, abuse, negligence or exposure to corrosive elements;
- 3) cosmetic damage and
- 4) labor or assembly costs.

Except as provided herein, JL Marine Systems, Inc. makes no express warranties, and any implied warranty, including without limitation any implied warranty of merchantability or fitness for a particular purpose, is limited in its duration to the duration of the written limited warranty set forth herein.

Except as provided herein, JL Marine Systems, Inc. shall have no liability or responsibility to the purchaser or any other person or entity with respect to any liability, loss or damage caused or alleged to be caused directly or indirectly by use of the product, including, but not limited to, any incidental or consequential damages. Some states do not allow limitation on how long an implied warranty lasts or the exclusion of limitation of incidental or consequential damages, so the above limitation and exclusion may not apply to you. This warranty gives you specific legal rights. You may also have other rights which vary from state to state.