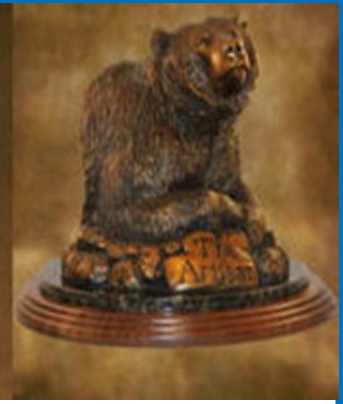




United Taxidermists Association



Quarterly Newsletter *Fall 2021*

EXPO 2022 Canceled

It is with great disappointment and frustration that the UTA has decided to cancel our Expo 2022 in Wichita, KS. With the WTS canceling their Show for Covid reasons this year and rescheduling for the same week next year, that put both of our Shows on the same days less than two hundred miles apart. The search for a great location for our Expo 2023 has begun and we have several interested venues to select from. We will update you as we navigate forward.

Now, more than ever, we need your support. Your membership is so important. Your participation on the Board of Directors is always welcome. Your suggestions for our future direction are greatly appreciated!

As always, Membership Renewals, Information, updates, etc. are available via the UTA web site
www.unitedtaxidermyassociation

The BOD of the UTA

**As the end of the year
approaches**

**Don't forget our vendor
discounts.**

Check them out on our website!

Back to Basics

One of the most common asked questions I hear around new taxidermists (and some old timers also) is how to stop the skin from pulling/shrinking away from the burr/rosette of the antlers. This is taking into part all things equal: good tan, good thinning and a somewhat normal cape. There are exceptions to every rule, but staying within the norm will get us better results in the long run.

I'm not sure how many have heard of the "two finger" rule. It is an old rule put in place determining how far back the antlers should be set, measuring from the back of the eye orbit to the base of the antler where the pedicle turns into visible antler. The method uses the pointer finger and middle finger placed together, side by side, to measure from the back of the eye orbit to the antler/pedicle base. This is a fairly decent rule once you as a taxidermist determine this distance for yourself. What do I mean by that? I'm pretty sure the "two finger" distance will change from the petite female taxidermist to the guy who is the size of an NFL offensive lineman! Until you figure out what works best for you, and until you get a good idea of how far back the antlers actually set according to this "measurement", an actual measurement from the front corner of the eye to the front or side of the antler/pedicle base will help in this area. One might ask, "why not measure from the back of the eye orbit to the antler base?" since this is how the "two finger" measurement is taken. Well, measuring from the caruncle/front corner of the eye is what would be done instead of the "two finger" method. UNTIL you get used to what you are seeing and doing when utilizing the "two finger" method from the back of the eye, (hence the "back to the basics" title of the article) we must realize that when we go to mount the deer, we are not putting the cape back on the full original skull of the animal. Therefore, this measure

(continued on page 3)



From the Editor

by Tim Stidham

I would like to welcome all of you to the Artisan quarterly newsletter. This will also be on our website and is intended to keep our members and partners in the know with all things UTA.

As you read on the front page, we have found it necessary to again cancel our Expo 2022. While we are very disappointed with this situation our Board did not feel like having two national shows on the same days less than two hundred miles apart was in the best interest of either us or the WTS. We do hope to see you at the WTS in May 0f 2022 and be sure to stop by our booth and give us a shout.

We will be looking into other ways to hold Regional seminars and workshops to assist our members and further the learning opportunities within the taxidermy industry. We are also open to your thoughts and ideas while we navigate this situation.

One of the items that we are working on is developing a “Legends” of the UTA. This group will be added to each year and will be made up by members whose contributions to the UTA have contributed to the forward progress of our agenda and mission statement. While we are still working on the specifics and criteria we hope to have it developed soon and will be included in the next quarterly newsletter. If you have an item you would like to have included in the newsletter please send it to me and I will see that it gets looked at and in the next issue.

We are always looking for volunteers to assist a Director with committees regarding membership, marketing, Expo planning and others as they come up. Contact your region director if you are interested in volunteering. You can find them on the website.

Finally, as we exit the dog days of summer, I know that we are all busy trying to get caught up before the hunting season begins and the cycle continues. Remember our vendors as most of them are beginning to have all of the items we need back in stock or have dates of when they should have items. As a UTA member you have discounts to many of our vendors and make sure that you use them so no money is left on the table.

The BOD of the UTA wishes each of our members a great start to the new hunting seasons and lots of work! Be sure to get out and enjoy the outdoors too!

Tim Stidham

Chair/Editor

Artisan Awards



Mike Mizelle from St. Cloud, Florida, was awarded the Artisan from the Georgia State Association with this turkey!

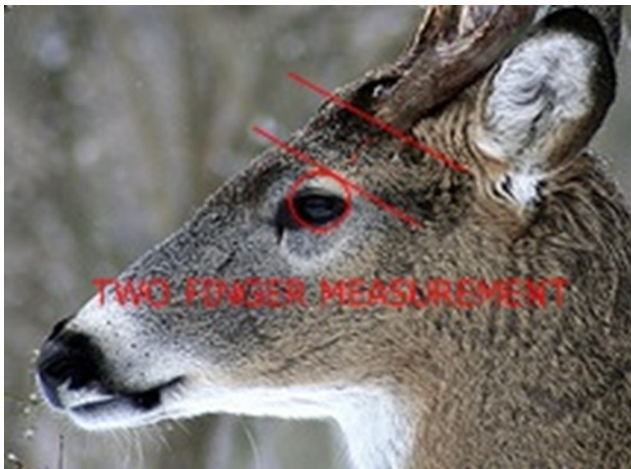


Jim Benson from East Grand Forks, MN. Was the Artisan recipient at the Minnesota State Association.



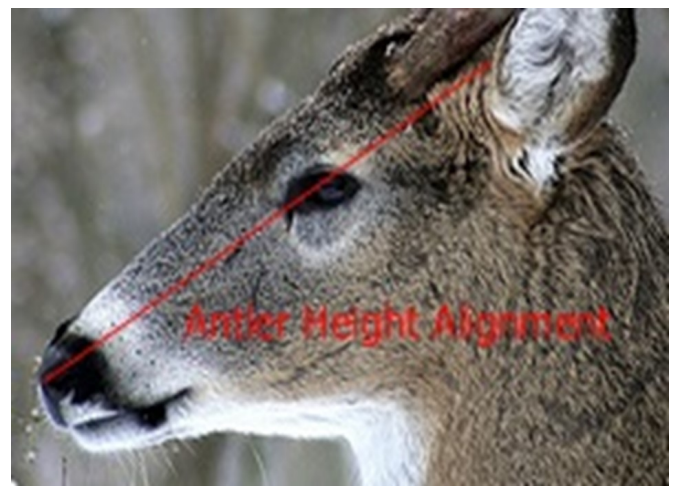
Doug Barnes was presented the Artisan Award from the Colorado Association for this mountain lion.

ment will have more probable movement than the front corner of the eye measurement to the front/side of the antler burr/pedicle area because of different sculpting methods.



If you have mounted enough deer, you will have noticed that some eye orbits on forms fit a 32mm deer eye rather nicely, and some orbit openings fit the 32mm deer eye with some room to move the eye around within the given socket. This is simple; the sculptor may have used a 34mm eye when sculpting the form. This would then give the whitetail artist using a 32mm eye room enough to move around the eye to get the “perfect” eye set and alignment/rotation they are looking to achieve.

Once the correct distance back from the eye is set, the next problem is the height of the deer antlers. I myself used to struggle with this all the time. I tried pulling the hide into place and using a super strong super glue. I tried the best hide pastes on the market. I tried actually stitching all the way around the cape in the area that would be next to the pedicle so I could “cinch” it tight. And lastly but not least, nailing this area until dry with the above mentioned methods. The problem in most cases however is the fact that the antlers were set way too high on the head in the first place. There really is no way to keep the hide from wanting to pull away in these instances. The best case scenario is to get the antlers in the correct position to solve this problem.



As you can see in the picture; a straight line from the front corner of the nose through the front corner of the eye will get the antlers set to the correct height. And in the pic where the deer has shed already, please take note of the angle of the picture from a bit below the deer and the fact that there is no burr/rosette to compare with. The antler protrusion from the pedicle will set right on this line to a small distance above this line. It really is as simple as that.

As you get used to seeing deer come into your shop, you will start to notice these anomalies. Your eye will catch the antlers with way more distance than normal from the back of the eye to the antler base. Just as your eye will catch antlers that seem to be setting higher upon the head than “normal”. This is where it is important to learn in the beginning to pay attention to the animal when it arrives. With so many sculptors and so many choices in forms these days, we need to try and understand where our basic measurements are taken and how to apply them to these forms. In the long run, this will get you to a more lifelike mount and with less trouble in some of these areas that always seem to creep into our taxidermy. I hope this helps someone.

Cory Foth is a master taxidermist from Peabody, Kansas and is a member of the UTA

New Award Coming

We are happy to announce a new award for the 2022 competition year. In 2022, the UTA will begin awarding a "Youth Artisan" award for the seventeen and under competitor. Like the regular artisan, it will be the People's Choice and not to be chosen by a judge. All youth who enter a mount of some category other than art will be eligible to win this prestigious Youth Artisan Award. It will be a smaller version of the current award and will have a bear cub on it. As soon as we begin casting it we will share a picture of it.



Membership Initiative

The BOD is introducing a new membership initiative for all State Associations. In the past if your state has joined we have allowed the investment to be ten dollars per member. For instance, if you state arbitrarily has 60 members, they could write a check to the UTA for six hundred dollars and each member of the state will be an active member of the UTA and will receive all of the benefits we have to I offer. The greatest benefit is the discounts from our vendor partners. This year we will be offering a new benefit. Some of you may remember that years ago we sent a one hundred dollar check with the artisan. Beginning this year, for any state that joins as an entire association, we will send a check for a hundred dollars for the Artisan winner AND a check for fifty dollars to accompany the youth Artisan winner. In summery, if your state joins, you will get all of the member benefits and we will also return one hundred and fifty dollars back to you included with the Artisans. If your state is looking to give back to their membership this is an avenue of opportunity for that to happen.

On the flip side to this, the BOD has also decided that a State Association must have twenty percent of its membership that belong to the UTA before we can send this award out. Again, using that arbitrary number of sixty members, twelve members must also be UTA members for your state to receive both Artisan Awards. The Artisan CAN still be awarded to a non -UTA member.

UTA
C/O Tim Stidham

Postage

Label