

49696 Pearl Ave
Quartzsite, AZ 85346

\$349,000



Brought to you as a courtesy of:



Holley Land & Luxury Group
Long River Realty
Primary Phone: 928-208-3403
Office Phone: 928-877-0111
Cell Phone: 928-530-0347
holleylandluxurygroup@gmail.com



Location

MLS # 1033913
Major Area Quartzsite Area
Subdivision Rainbow Acres

Remarks

This great looking property on a large corner lot in Rainbow Acres has loads of parking! This 0.37 acre corner lot has access on one street for RV, offroad vehicles and golf carts to park under Kool cover and carport. The access on the other street leads to the 2 car garage and side parking with RV hookup. 2 covered patios for enjoying the great outdoors, grilling or relaxing in the hot tub which stays. The stucco home is a roomy size with 2 bedrooms and an office/den. Kitchen has an island and is perfect for minimum stress. The home has a new tile floor, loads of storage...

Rooms

Beds	2	BuildingAreaTotal	1596	Lot Dim	130 X 144 X 94 X 126	Lot SqFt	16117
Total Baths	2	Year Built	2004				

Additional Info

Interior Features: Casual Dining • Ceiling Fan(s) • Counters-Laminate • Counters-Solid Surface • Kitchen Island • Pantry • Vaulted Ceiling • Walk-In Closet(s)	Exterior Features: Fruit Trees • Hot Tub • Landscape-Back Yard • Landscape-Front Yard • Motor Home/RV Hookups • Patio Covered • Utility Building/Shed • Watering System Green Features: Programmable Thermostat
---	--

Photos for MLS # 1033913

49696 Pearl Ave, Quartzsite, AZ 85346

\$349,000

39



36



38



30



28



1



MLS # 1033913

49696 Pearl Ave, Quartzsite, AZ 85346

\$349,000

2



3



4



5



6



7



8



9



10



11



12



13



14



15



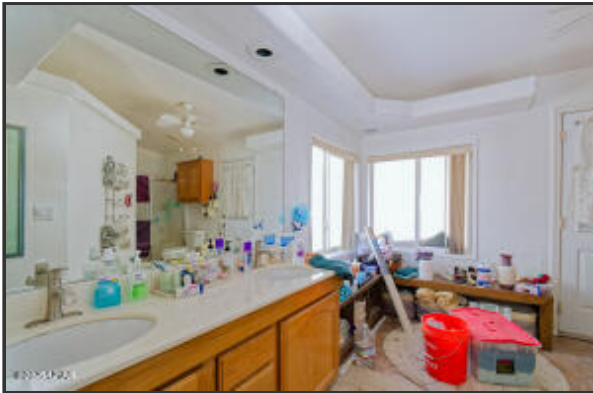
16



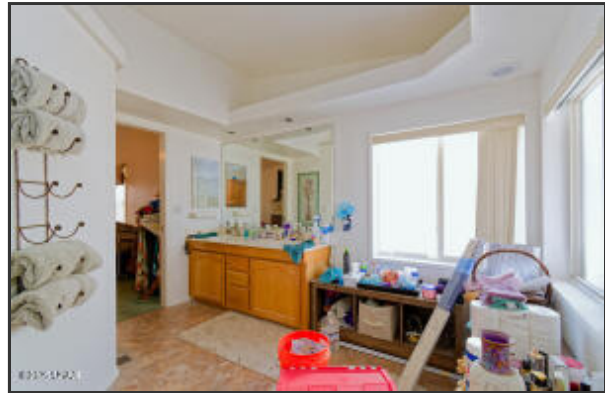
17



18



20



MLS # 1033913

49696 Pearl Ave, Quartzsite, AZ 85346

\$349,000

19



42



25



23



24



27



35



34



33



43



44



45



MLS # 1033913

49696 Pearl Ave, Quartzsite, AZ 85346

\$349,000

46



47



48



