

PLEASE READ BEFORE INSTALLATION!

Attention: Please make sure subfloor is even & lay 6 mil Moisture Barrier on it before installing the vinyl plank, otherwise warranty may be unacceptable.

PRE-INSTALLATION SUBFLOOR REQUIREMENTS

All Subfloors must be:

- Dry
- Structurally sound
- Clean: Thoroughly swept and free of all debris
- Level: Flat to 4.7mm(3/16") per 3.3 meters (10-foot) radius

Room temperature and humidity of installation area should be consistent with normal, year-round living for at least one week installation of flooring. Maintaining an optimum room temperature of measure 70°F and a humidity range of 30-50% is recommended.

INSTALLATION TOOLS

For all installation methods:

- Tape
- Tapping block (trimmed piece of flooring)
- Pencil
- Pry bar or pull bar
- Chalk line
- Crosscut power saw
- 3M Scotch-Blue™ 2080 Tape
- Rubber mallet

STARTING YOUR INSTALLATION

Work from several open boxes of flooring and "dry lay" the floor before permanently laying the floor. This will allow you to select the varying grains & colors and to arrange them in a harmonious pattern. Remember, it is the installers' responsibility to determine the expectations of what the finished floor will look like with the end user first and then to cull out pieces that do not meet those expectations.

Begin installation next to an outside wall. This is usually the straightest and best reference for establishing a straight working line. Establish this line by measuring an equal distance from the wall at both ends and snapping a chalk line. The distance you measure from the wall should be the width plank. You may need to scribe cut the first row of planks to match the wall in order to make of a straight working line if the wall is out of straight.

You may want to position a few rows before starting installation to confirm your layout decision and working line. When laying flooring, stagger end joints from row to row by at least 8". When cutting the last plank in a row to fit, you can use the cut-off end to begin the next row. If cut-off end is 8" in length or less, discard it and instead cut a new plank at a random length and use it to start the next row. Always begin each row from the same side of the room. When near a wall, you can use a pry bar to pry close the side and end joints.

INSTALLATION INSTRUCTIONS

Inspection: Prior to installation, inspect planks in daylight for visible faults/damage. Check if subfloor/site conditions comply with the specifications described in these instructions. If you are not satisfied do not install, and contact your supplier.

Before laying: Measure the room at right angle to the direction of the planks. For best visual effect, planks in the final row should be at least 2 inches wide (half width of plank minimum). For this purpose, planks in the first row can be cut to smaller size. Shuffle planks in order to obtain a pleasant blend of shades. Lay planks preferably following the direction of the main source of light. We recommend laying on wooden floors crossways to the existing floorboard. Planks must not be nailed or screwed to the subfloor. Base boards and molding must not be fixed in a way which restricts the movement of the floor.

INSTALLING THE FIRST ROW:

1. Starting from the RIGHT with the tongue facing the wall, carefully place the first board in place. (Figure 1)
2. Align the next piece by overlapping the end of the first board. Press down firmly to lock short end, preferably by tapping on joint with a rubber mallet. Continue in this manner until reaching the final plank in the first row.
3. Cut the final board piece to length.

CONTINUING THE INSTALLATION:

1. Begin the second row with the cut piece from the first row. (Figure 3) If the cut piece is shorter than 8" (20 cm), do not use it. Instead, begin with a new board that is at least 8" in length and allows 8" between the end joints on the adjacent planks.
2. Position the first board in place by angling it up slightly, pushing forward and interlocking the side tongue. (Figure 2) Slide the board to the left as necessary to align the edges of the end joint.
3. Carefully push the board down until the tongue and groove lock together on the side and ends.
4. Press down firmly on end joint, preferably tapping with a rubber mallet to fully engage short end.
5. Install the remaining boards and rows in the same manner. (Figures 3 & 4)
6. Cut the last board to size. If necessary, complete the tight fit by tapping the board into place with a pull bar.
7. Whenever practical, use cut pieces from previous rows as the starter board to reduce waste.

8. Maintain 8" spacing between end joints after the first four rows for best appearance..

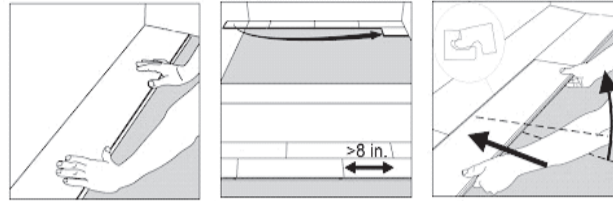


Figure 1

Figure 2

Figure 3

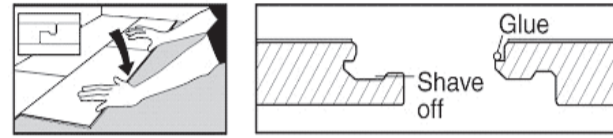


Figure 4

Figure 5

INSTALLING FINAL ROW:

1. The last row may need to be cut lengthwise (ripped).
2. Place the last row of planks to be fit no top of the last row of installed planks. Use a piece of plank as a scribe to trace the contour of the wall.
3. Mark where the board will be cut. If the fit of the wall is simple and straight, simply measure for the correct fit and cut.
4. After boards are cut, position planks and tighten the fit using the pull bar.

INSTALLING UNDER A DOOR JAMB:

1. Installation under moldings (such as door jambs) may require that the top lip of the groove on the end be reduced in size.
2. Using a small plane or knife plane, carefully shave off the ledge of the groove. (Figure 5)
3. After the groove ledge has been trimmed, place the board in place and tighten with a pull bar to test for fit. The installer must be sure that the required expansion gap has been maintained and the flooring is not pinched.
4. If fit is not correct, re-trim as necessary.
5. Place a bead of wood glue on the bottom lip of the groove.
6. Insert the tongue into the groove and tighten the fit with a pull bar. Hold the board in place with painters tape (3M Scotch-Blue™ 2080 Tape) until the glue is dry. Do not use masking tape or duct tape as they may damage the floors finish.

In-floor Radiant Heat:

Use only recommended flooring adhesive over manufacturers recommended plywood substrate.

- Turn the heat off for 24 hours before, during and 24 hours after installation when installing over radiant heated subfloors
- Failure to turn the heat off may result in shortened working time of the adhesive.
- Flooring temperature must not exceed 85 degrees during installation.
- Avoid Direct Sunlight Avoid High temperature 100°F/37.8°C).
- Failure to strictly follow adhesive manufacturer's guidelines may result in failure and void warranty.

Warning: Heating mats work very well under carpet, tile and stone, however we do not recommend to have them placed directly underneath the Engineered Vinyl Floor. It is best to install Engineered Vinyl Floor over embedded floor heating systems.

Joy Life Vinyl Plank is interior use only, don't use rooms that are not temperature controlled. It's click-lock floating floor and should be allowed to expand and contract freely. It can't be nailed or glued to the subfloor. Never install cabinets, vanities, islands, fish tank and similar heavy items on top of our floating vinyl plank floor. If installing in a sunny area, or in front of a glass patio door or window that gets a lot of heat, be extra careful to maintain that expansion space. Never install our floating vinyl plank floor over carpet, carpet pad, cushioned vinyl flooring, floating flooring, laminate, rubber, cork, engineered or solid wood flooring which over concrete, or any other moisture sensitive material attached to on-grade concrete. Make sure your subfloor is even and clean, subfloor must be within the tolerance of flatness of 3/16" on a 10' span. Exposing the vinyl plank for 24 hours allows the vinyl planks to acclimate to conditions of the room where it will be installed, maintaining an optimum room temperature of measure 50 to 100 fahrenheit degree and humidity range of 30-50% is recommended. Moisture levels of concrete slabs before, during and after installation must be ≤ 3lbs per 1000sqft per 24 hours. Lay 6 mil moisture barrier on subfloor before installing the vinyl plank. Must put transition to divide each area over 60'x60' with 1/8" gap to expand. Make sure there is a 1/4" gap at all vertical obstructions, such as dry wall, door frames, column, cabinet, fireplace etc, and do not install the baseboards or quarter round too tight. Nail quarter round or other trim into the wall, not the floor. The floating floor has to be able to move freely underneath the baseboards or quarter round.

Daily use: Maintain an appropriate indoor temperature and use glass doors and window treatments to block direct sunlight, never pull, push or drag furnitures, appliances or other items across the floor. When moving furniture or heavy items, always lift and carry the items. Locking system and wear layer may be damaged by roll chair, wheel chair also, must put mat cover all use area on the floor. Don't use Bleaches, Detergent based cleaners, ammonia, abrasive and shine products etc to clean flooring.

If not follow the above installation considerations, warranty will be void.