

McArthur-Burney Falls Memorial State Park



VISITORS GUIDE

*Published for our visitors by the McArthur-Burney Falls Interpretive Association
McArthur-Burney Falls Memorial State Park, 24898 State Highway 89, Burney, CA 96013 • (530) 335-2777*

What Can Be Found Inside

*We extend a warm invitation to all nature enthusiasts and adventure seekers.
McArthur-Burney Falls Memorial State Park, nestled in the heart of natural splendor,
awaits your exploration. Here's what you need to know for an unforgettable visit*

THE HEARTBEAT OF THE PARK: BURNEY FALLS

Our park owes much of its vitality to Burney Falls and its meandering creek. These life-giving waters sustain an abundance of flora and fauna. From majestic trees to elusive wildlife, the park teems with diversity. Follow our Facebook and Instagram accounts for glimpses into our rich ecosystems.

We are pleased to announce the reopening of the Falls Loop Trail after undergoing important construction last year. You will now have access again to the base of Burney Falls and be able to make the full loop around the falls enjoying the spectacular views and nature. This construction greatly improved the beauty, safety, and access to the Falls Pool area. We hope you enjoy.

Please make sure you are staying safe and obeying all signs and rules. Important information can be found throughout the park. But you can always feel free to ask any Park Staff and we be happy to give you an answer or point you in the right direction.

WE ARE A BIODIVERSE HAVEN IN NORTHERN CALIFORNIA

Nestled between the rugged dry Southwest and the lush wet Pacific Northwest, McArthur-Burney Falls Memorial State Park is on the eastern edge of a swath of notable biodiversity. From the coast to near the Nevada border, this region rivals tropical rainforests in the variety of animals and plants that thrive here.

The secret lies in its varied elevations and diverse soil compositions, influenced by the surrounding mountain ranges. Traveling just a few miles can reveal

entirely different rainfall patterns, weather conditions, and niches to be filled by the adaptable.

WHAT'S INSIDE THIS NEWSLETTER?

1. Local History and Historic Photos: Dive into the past as we share captivating stories and vintage images of the park.

Discover the people who shaped its legacy and the events that unfolded here.

2. Natural History Unveiled: Explore the ecosystems that thrive within our boundaries. Learn about the delicate balance of life—where every plant, insect, and critter play a vital role.

3. Meet the McArthur-Burney Falls Interpretive Association: Our dedicated volunteers work tirelessly to enhance your experience. Get to know this passionate group and their commitment to preserving our natural heritage.

4. Embark on the Discovery Quest: Earn this year's coveted patch by answering thought-provoking questions. Strengthen your connection to McArthur-Burney Falls as you delve deeper into its resources.

A CALL TO NATURE

As our guests, you bring a unique blend of skills,



questions, and interests. Yet, there's a common thread we likely all share—we can value the opportunity to leave behind some stresses of modern life and embrace the desire to witness the awe and wonder of the outdoors. Here, guided by the symphony of sounds, the play of light, and the earthy scents, you can always discover more of what lies within.

Welcome to McArthur-Burney Falls Memorial State Park—a sanctuary where nature whispers its secrets, and the waterfall roars its approval.

Supervisor's Welcome Blair Pubols Supervising Ranger

Hello and welcome to McArthur-Burney Falls Memorial State Park, a true gem of the California State Park System. Those of us at the park are honored to care for such a special place and are dedicated to ensuring your visit to the park is memorable and inspiring.

Our theme for this year is "inspiration". Standing at the base of Burney Falls – the roar deafening your ears and the mist spraying over your cheeks – it is hard not to be inspired. For thousands of years people have been drawn to this place and have left changed and inspired. For many that inspiration has manifested in works of art – paintings, photographs, songs, poems, pottery, carvings, ect... Maybe your reaction is not art, but I hope you leave here changed and inspired. Maybe you leave with a fresh perspective on your place in the world, or the importance of the natural world. Or maybe you simply leave with a recharged battery, ready to take on the new work week. Maybe you are driven to write, or draw, shape, or dream. Whatever it is, I hope you allow yourself to be inspired by your visit.

This year we are excited to have completed the upgrades and repairs to the Falls Loop Trail. This project has been in the works for years and culminated in the trail's closure for the 2024 season. We are so grateful for the completion of the project which improves the aesthetic and safety of the Fall's Pool area. For those that have been coming to the park for many years, we hope that you can appreciate the great improvement to this area.

Be sure to check out the rest of the park while you are here. Many will soak in the inspiration of the falls without ever taking the time to explore everything else the park has to offer. Go ask some questions in the visitor center and be inspired to read more about the origin of the falls. Take the trek on the headwaters trail to the Headwaters pool and be inspired by the journey of water and what your role in the water cycle is. Read the gravestones at the pioneer cemetery and consider the people buried there who made this place home, and the native peoples who have lived (and continue to live) here long before the pioneers. Cast a rod down at Lake Britton and appreciate how great a day of fishing is. Whether you're here for an hour or a camping for a week, we are glad you visited.



Welcome From the McArthur-Burney Falls Interpretive Association

As President of the McArthur-Burney Falls Interpretive Association, I am pleased to welcome visitors to the McArthur-Burney Falls Memorial State Park.

Inspiration is the theme of this year at the Park. The root word of inspiration is from the Latin "inspirare" meaning "to breathe into".

This definition helps me to understand how inspiration can give us an unexpected boost. The boost could be to get up, move forward and take action. Surprisingly, it could also be to slow down and enjoy what we have right in front of us. We could be inspired to take on an exciting, new project or challenge. We could also be inspired to stop, too. To really take the time to relax and rest.

My favorite way to experience the natural beauty of the Intermountain area is with family and friends. I often remember those who are no longer with us, too. I miss my father, Steve Sacson and my brother George Sacson. They loved the outdoors and this area so much. A favorite memory is boating, swimming or hiking with them and enjoying having an ice cream with the family afterwards on a hot summer day.

Camping, fishing and preparing outdoor meals are also fantastic ways to make memories and spend time with friends and family. These activities are great ways to pass on our love for nature and learn about history. We may also learn some new skills along the way. We could be inspired to try our hand at woodworking, handcrafting, art, music and/or storytelling. My own personal favorite is outdoor cooking. To me, nothing tastes better than having a really good breakfast or barbecue meal right next to a great scenic view.

We are also very happy to see the lower falls trail open again. The association is continuing to focus on improvements for any area or item needing repair or replacement. The MBFIA is also planning both educational and volunteer opportunities throughout the year. They will be posted on the official McArthur-Burney Falls Memorial State Parks website.

Retaining the natural beauty of this area continues to inspire each of us to make memories and pass them on to benefit future generations for years to come.

Sincerely,
Jim Sacson
President, MBFIA



530-336-5222 or 800-626-4366
PO Box 818 • Fall River Mills, CA
www.fallriverwildrice.com



FARMERS
INSURANCE
David Winningham
530-335-4704 (Office) • 530-335-4852 (Fax)
37140 Main St., #B Burney, CA 96013-4129
License Number: 0B97856
dwinningham@farmersagent.com • www.farmersagent.com/dwinningham



530-335-5471
37113 Main St.
Burney
Hours: Mon-Sat
8am-5:30pm
Tools • Plumbing • Hardware
Electrical • Paint • Lawn & Garden
Camping Supplies & MORE
WE NOW DO FLOORING!

California State Parks Mission Statement

To provide for the health, *inspiration*, and education of the people of California by helping to preserve the state's extraordinary biological diversity, protecting its most valued natural and cultural resources, and creating opportunities for high-quality outdoor recreation.



Meet the New Ranger

Hello! My name is James Morris and I have been working at McArthur Burney Falls Memorial State Park as a park ranger since March 2025.

It has been a lot of fun getting to know this park since I started here and watching it slowly “wake up” from winter. So far, I have really been enjoying interacting with park visitors and hiking the trails, especially the Headwaters Trail.

A little about me: I am originally from Plumas County and graduated from Chester High School. After graduating from California State University Chico, I spent several years working on campus in various roles.

I started working for California State Parks in 2020, when I started as a seasonal park aide at Bidwell Sacramento River State Park.

After working seasonally at Lake Oroville State Recreation Area and Woodson Bridge State Recreation Area, I went to the State Park Peace Officer Cadet Academy at Butte College in 2021.

My first job after finishing the academy in 2022 was at Clear Lake State Park and Anderson Marsh State Historic Park in Lake County, California. If you have never been to either of those parks, I encourage you to go check them out. They are gorgeous parks with lots to see and do.

I moved to the Burney area with my wife and three children in March 2025, and we love it here so far. In my spare time I enjoy hiking with my kids, hunting, fishing, cooking for my family, and learning about nature using the iNaturalist app.

My favorite California State Park is probably Mackerricher State Park in Mendocino County because of all the time I spent camping there as a kid. However, Burney Falls might soon become my number one favorite!

If you see me out on the trail or in my patrol truck, please come and say hello! Thank you for visiting this wonderful park. Please respect the park rules and leave no trace while you are here.



McArthur-Burney Falls Memorial State Park • Page 3

Answer Merganser:

Addressing some of the common questions from the last year

Is fishing allowed here?

Yes: the park offers excellent fishing opportunities.

Above the falls – Burney Creek catchable trout are stocked throughout the summer by the Department of Fish and Wildlife.

Below the falls – Lower Burney Creek - This is a wild trout fishery with special regulations. You can read about these regulations at the visitor center or on the CA Department of Fish and Wildlife website.

Lake Britton- A still-water fishery which contains Smallmouth Bass, Blue- gill, Crappie, and trout. All of these species are present in significant numbers. Your best option is to use a boat or kayak to get to the best spots.



Photo by Bengt Nyman from Vaxholm, Sweden • Via Wikimedia Commons Attribution 2.0

Remember

The top of Burney Falls is a closed area, from near the Fisherman's Bridge to the top of the waterfall. This area is closed for resource protection and public safety as it is extremely sensitive area and unstable. It is a criminal misdemeanor to enter this area.

What are the Fishing Rules at the park?

- All person 16 years of age and older must have a fishing license. (Licenses are available for purchase at the General Store)

- From the Falls Pool, downstream on Burney Creek to Rainbow Bridge,

trout fishing is open year-round. This section of the Burney Creek is catch and release only. Barbless hooks with artificial bait or lures can be used. No power bait can be used in this area

- Beginning 60 yards upstream of Burney Falls on Burney Creek, trout fishing is open year-round.

- Fishing at and on Lake Britton is open year-round.

- From the last Saturday in April through November 15, there is a five-trout bag limit with no gear restrictions.

- From November 16 through the Friday preceding the last Saturday in April. A zero (0) trout bag limit

applies, and only artificial lures with barbless hooks may be used.

- In the waters where the bag limit for trout is zero (0), trout must be released unharmed and should not be removed from the water.

Where is the fish hatchery?

Approximately 10 miles west of MBFMSP the Department of Fish and Wildlife operates the Crystal Lake Fish Hatchery located by Baum Lake in Cassel, Ca. They breed various species of trout. If you are looking for a great place to catch fish, make the short trip over to Baum Lake and put in a few casts.

SAFEWAY



37264 Main St., Burney, CA 96013

COUPON

Valid 6/1/25 to 6/31/26 only at:
37264 Main St., Burney, CA 96013

SAFEWAY

\$5 OFF

your grocery purchase
of \$25 or more*

*Save \$5 when you spend \$25 or more in qualifying purchase in a single in-store transaction with your Safeway for U® account (calculated after deduction of promotional and Safeway for U® account savings and all other discounts, coupons, offers and savings). Qualifying purchases exclude alcoholic beverages, tobacco products, fuel, fluid dairy, prescription items and co-payments, bus/commuter passes, fishing/hunting licenses and tags, postage stamps, money orders/transfers, ski/amusement park/event/lottery tickets, phone cards, gift cards/certificates and applicable taxes, bottle/container deposits and bag fees. Limit one (1) coupon per transaction. You pay applicable taxes on purchases made with the coupon. Coupon cannot be doubled or combined with any other discounts, coupons, savings or offers. We reserve the right to correct typographical, pictorial and other ad or pricing errors at any time with or without notice. Online prices, promotions, programs, savings, discounts, and offers may differ from those in our physical store locations. Void where prohibited by law. Coupon has no cash value and no cash will be given. Coupon expires 5/31/25. ONE TIME USE ONLY.



a Cut **ABOVE**

Hand-cut & trimmed in-store daily.

Higher
Quality
**ORGANIC
PRODUCE**

We beat national
standards so you
get the Best.



Fresh
BREAD

Crisp, chewy,
100% delicious.
Baked in-store
daily.



Higher Standards
BETTER QUALITY

Always quick & easy in the Deli.

Hooked on **FRESH**



Ask about our
Responsible Choice
seafood.





Commemorating Your Family with a Memorial Picnic Table

Through a partnership with the Department of Parks and Recreation (DPR), you can place a picnic table inscribed for your family in the McArthur-Burney Falls Memorial State Park. The Commemorative Picnic Table Program provides amenities for state parks and their users, generates revenue for the Friends of the Falls Association, and is a way for donors to commemorate someone special.

For a tax-deductible gift of \$2,800.00, donors can place a picnic table in McArthur-Burney Falls State Park. The table is an 8' Wheelchair Accessible Picnic Table, made of 3" select Con-Heart Redwood. The Sonoma County Probation Camp (SCPC) produces the tables for state parks. Manufacturing takes 8-12 weeks. Table inscriptions are placed on the crossbars located at the ends of the table. Each crossbar has room for a 32-character inscription routed with 2-inch letters.

To apply for a Memorial Table, complete an application form, which you can get at the Visitor Center or download from the website: burneyfallspark.org. Send the application to McArthur Burney Falls Interpretive Association

PO Box 777, Burney, CA 96013 or email to Webmaster@burneyfallspark.org.

After your application is approved by DPR you may submit payment with a Check or Credit Card.

ART INSPIRED BY THE PARK



By Hazel Morris, Age 7



By Jeremiah Morris, Age 5



By Juniper Morris, Age 3

Friends of the Falls Donations - 2024

Donations to the McArthur-Burney Falls Interpretive Association

The Ashby Family Trust – Susan & Bill Ashby commemorating the 44 years our family has vacationed at Burney Falls

Robert Boyce – McArthur-Burney Falls Interpretive Association Board Member

The Calkin Family – In Memory of Sandy Stefenoni.

Bill Garcia – In Memory of Dale Berliner and commemorating the 31 years our family has vacationed at Burney Falls.

The Germeraad Family – In Memory of Stewart and Claire Smith, “As Constant As The Falls”.

Diana Gomez – In memory of Tom Gomez and Sandy Stefenoni

Maureen Harris

James Muscarella

Thomas & Mary Pilla – In loving memory of John Roderick McArthur, nephew of Frank McArthur.

The Stefenoni Family in memory of Sandy Stefenoni and Tom Gomez. Also commemorating the 39 years the family has vacationed at McArthur-Burney Falls Memorial State Park.

James, Jennise, Riley & Carson Towle – In Memory of Tom Gomez and In honor of the 116 cumulative years we have been vacationing at McArthur Burney Falls State Park.

Thomas J and Jill Marston Van Aken Family Trust - Commemorating 61 years vacationing at McArthur- Burney Falls State Park.

Thank you to donors through Network For Good, Bonterra and Charities Aid Foundation of America

A special thank you to all the anonymous donors who support our park through donations at the Visitor Center and the Park Entrance Station –

Community Support:

Peggy Bishop -

Bishop Custom Products

Craig Harrington -

The Intermountain News

Richard Lake- USA Tax Service

Burney Lions Club

Leos Youth Organization

DO YOU LOVE THIS PARK? SO DO WE!

WHO ARE WE?

The McArthur Burney Falls Interpretive Association works around the clock to make sure visitors to McArthur Burney Falls State Park can enjoy it in so many different ways. We are a group of volunteers that work with local businesses, artists and community organizations to raise funds and create exciting activities for you, when you visit.

WHAT ACTIVITIES DO WE SUPPORT AT THE PARK?

Did you enjoy the campfire and evening programs? Did you or your child complete the Discovery Quest Challenge or Junior Ranger class and receive a patch? Did you take a nature walk to see the Osprey nests? You are reading the Visitor Guide right now. Did you find it helpful and interesting? Did you attend Heritage Day in October where you made candles or bead necklaces; sawed a log, made a rope, drank fresh apple cider press and listened to old time fiddle music? Have you learned the geology and wildlife of the park by reading the interpretive signs along the paths? So many are faded, but we are replacing them! These are the activities that we raise funds to support.

HOW DO WE RAISE FUNDS?

In many ways, you help us every time you:

Visit the Visitor Center Gift Shop to buy mementos, local arts, hats and T-shirts.

Purchase Firewood: We work with CalFire to split and bundle wood from this park to make sure that visitors have firewood for their campfires.

Order Memorial Tables & Benches: Families can purchase tables and benches

with messages honoring their families or loved ones. (For application: burneyfallspark.org)

Recycling! Every time you place an aluminum can or plastic bottle in the recycling bins, the Mountain Jewels Ranch help us sort it and sell it to a local recycling company.

Make Family Donations: We have donations from families who have vacationed at McArthur Burney Falls for generations! They are listed in this Visitor Guide honoring their loved ones and recording the number of years their families have come here. That is SO AMAZING!! And we love to

honor them. (Get a donation envelope at the visitor center or donate at burneyfallspark.org.)

Other ways you can help support this park:

JOIN OUR BOARD! JOIN US ON VOLUNTEER DAYS! MAKE A DONA- TION!

FOR MORE INFORMATION:
Visit the Visitor Center: fill out a donation envelope: contact us by email: friends@burneyfallspark.org; log onto website: burneyfallspark.org: or send us letter of interest to MBFIA, PO Box 777, Burney, CA 96013



**BURNEY
CHAMBER OF COMMERCE
WELCOMES YOU TO MOTHER
NATURE'S COVETED GEM**

**WE ARE A
FULL SERVICE
COMMUNITY**

Recreation
Water sports and fishing –
Lake Britton
Pit River and
Baum Lake
Biking –
Great Shasta Rail Trail
Hiking –
Park trails and GSRT
Golf –
Fall River Mills

Services
Grocery Stores
Gas Stations
Vehicle maintenance
Entertainment
Movie Theatre
Mother Nature's bounty
Accommodations
and restaurants

**Please use our app
FALL4NORCAL for
additional information**

**BURNEY CHAMBER OF COMMERCE
36879 Main Street, Burney, CA 96013
Phone: (530) 335-2111 • Email: burneycoc@gmail.com**

McArthur-Burney Falls Interpretive Association BECOME A BOARD MEMBER

OPPORTUNITY

This is your opportunity to have a positive impact on your favorite parks. We are currently recruiting board members committed to enhancing the quality of visits to McArthur-Burney Falls Memorial Park, Castle Crags State Park and Ahjumawi Lava Springs State Park.

ABOUT US

Just like you, members of the Board of Directors of the McArthur-Burney Falls Interpretive Association (MBFIA) are excited to work together as a team to

provide ideas, assistance and funding for activities which enhance the quality of experiences for visitors of the McArthur-Burney Falls, Castle Crags and Ahjumawi Lava Springs State Parks. Our all-volunteer association was founded in 1984 to promote greater appreciation of the cultural and natural history of the region

VALUABLE KNOWLEDGE & SKILLS

Directors are selected from a broad range of backgrounds and disciplines to provide varied skills necessary for the board's mission and activities. Skill in any of the

following areas would greatly contribute to our continued successes.

- Leadership ability to help board members operate as a team and to ensure a successful cooperative relationship with State Parks
- Familiarity with the local State Parks and willingness to learn more
- Knowledge of and interest in the Intermountain region; its people, history and ecology
- Fiscal and accounting background and ability
- Experience in merchandising, sales and advertising
- Knowledge of, or experience with, the operations of other non-profit organizations
- Record keeping, writing, and editing skills

HOW TO APPLY

Please send a letter of interest to: McArthur-Burney Falls Interpretive Association, PO Box 777, Burney, CA 96013 Or by email to: friends@burneyfallspark.org. For more info:

burneyfallspark.org

Be sure to include your contact information!

Annie's Main Street Place

Discover gifts, decor & antiques

GET YOUR SOUVENIR COIN AT ANNIE'S
BURNLEY FALLS • LASSEN PEAK • PACIFIC CREST TRAIL



SASQUATCH SPOTTED AT ANNIE'S
Take Your Photo With The Beast



See Our 'Christmas All Year' Room

37096 MAIN STREET • BURNLEY • (530) 335-5400

BURNLEY FALLS SOUVENIRS & GIFTS

Inspirational Gifts • Antiques • Bath & Body • Baby • Kitchen • Garden Stationery • Camille Beckman Body Products • Fall River Wild Rice Women's Clothing & Accessories • Gift Certificates

Open Wed thru Sat 11ish a.m. to 5:30 p.m. • In December Open Mon thru Sat

Be Our Guest of Honor

Enjoy a taste of the country in a privately owned home nestled on the 400-acre Albaugh Ranch in the beautiful Fall River Valley. Your family or small group (4-10) can enjoy the activities of the area while staying within the comforts of home.

Albaugh Ranch Guest House & Wedding Venue

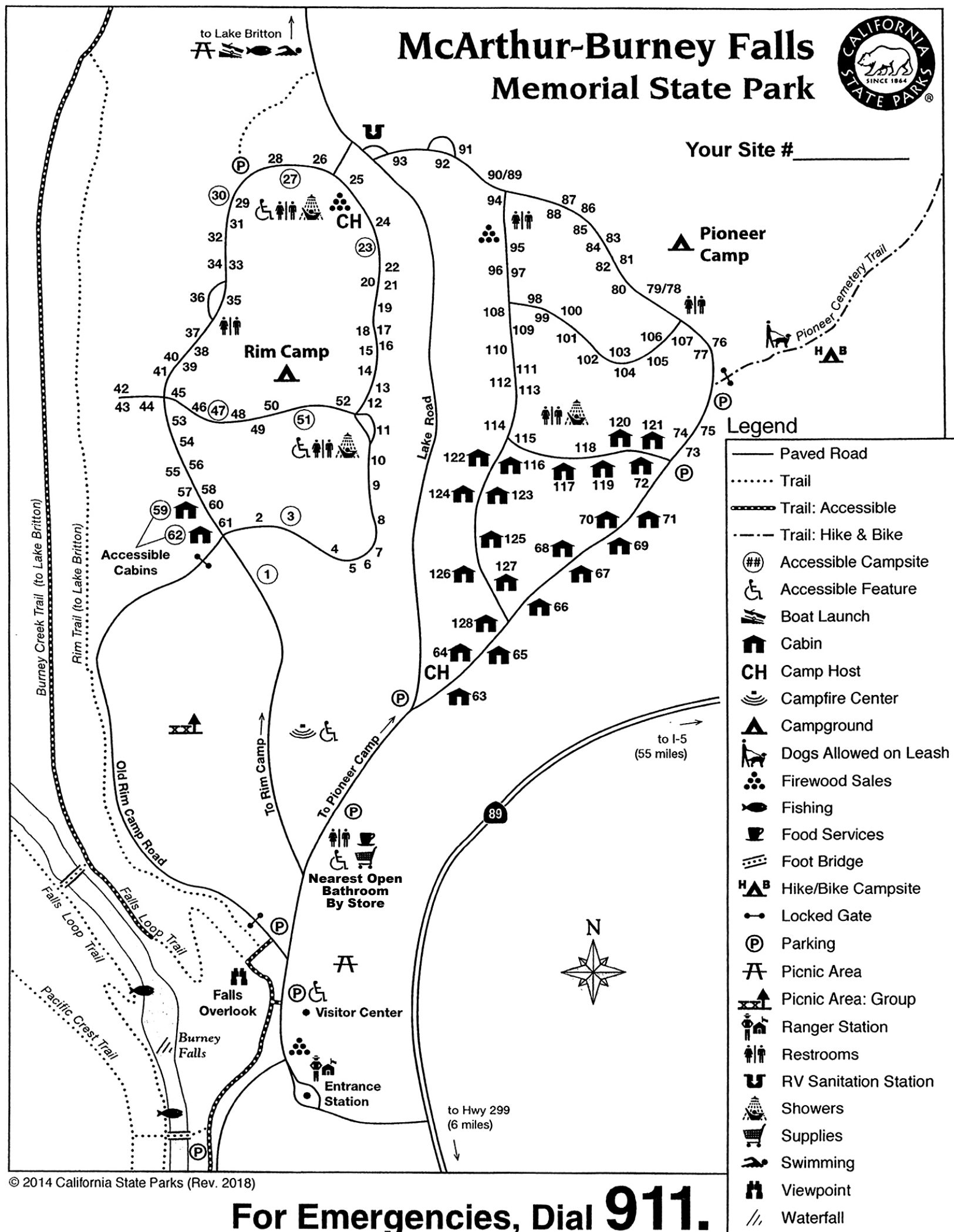
Fall River Valley
Your Hosts: Stephen & Elena Albaugh

530-336-6267
To view more photographs, visit www.vrbo.com/191318

Find The News at the tips of your fingers

Complete Issues of After Five Magazine
as FREE PDFs available online at **northstate.news**
on mobile, tablet and desktop

And have issues of The Intermountain News emailed to you
Telephone 530-725-0925 to get that started today!





Earn a patch!

DISCOVERY QUEST!

This activity is designed as a treasure hunt and information gathering game for guests to the park. The end reward is knowledge and this beautiful custom-made embroidered patch. The Quest is for individuals of all ages or as a family activity – we want you to have fun, find adventure and discover the many sides of McArthur-Burney Falls Memorial State Park. To find the answer to these questions, we invite you to explore the park, attend our interpretive programs, check out the displays and bulletin boards, read the Visitors Guide and visit the overlook of the park. Only one completed quest is necessary for the entire family so you can work on it together. We present a new Discovery Quest challenge each year and you can collect a new, limited edition patch each year as well. Bring your completed pages to the Visitor Center or the entrance kiosk to receive your patch. We ask that an adult accompany children under age 12.

1.

When was Burney Falls designated a National Natural Landmark?

4.

When did the Civilian Conservation Corps come to work at McArthur-Burney Falls Memorial State Park?

2.

What is the average daily summer flow of the falls?

5.

What lies underneath the ancient river gravels at the bottom of the falls pool?

Bonus: If the average person uses 25 million gallons of water in their lifetime, how many people-lives could the falls support each day?

6.

What are 5 plants one might find in the park? Which might you know if you saw them?

3.

**How deep is the Falls pool?
How cold is the water?**

7. What are 5 animals one might find in the park? Have you seen any of them on your visit?

8. What are 5 birds one might find in the park? Where would you see them?

9. Say hello and get the signatures of 4 employees here.

10. What do black swifts eat?

11. Where is the only place black swifts land?

12. What do they make them (Answer to Number 11 question) out of?

13. How long have people been coming to the falls pool?

14. When was the Visitor Center building built (originally the camp store)?

15. What is one way to tell a bald eagle from an Osprey? (Hint: check the sign in the middle of the lower lake parking lot for a possible answer)



An Introduction to the World of Manzanita

Welcome to McArthur Burney Falls Memorial State Park! Most people who come to visit this special place probably come for the waterfall or the fishing, but if you are someone who enjoys learning about plants, you are in for a treat as well.

Burney Falls is home to a diverse array of plant species. I would like to draw your attention today to one particular type of evergreen shrub found in this park, called manzanita.

Manzanitas belong to the genus *Arctostaphylos* and are those woody shrubs with the peeling, shiny red bark and round green leaves that you can see practically everywhere in the park. For example, there are many of them right at the entrance to the Falls Loop Trail.

If you are a Spanish speaker, you already know that manzanita means “little apple” in Spanish. Manzanitas produce many berries in the Summer that are a favored food for wildlife in the park, which makes sense, as the Latin name for the genus *Arctostaphylos* translates roughly to “Bear grapes”.

Manzanitas are fascinating plants for us here in California, because California is a hotspot for manzanita diversity. In fact, 99 percent of the over 100 species of manzanita that exist on the planet are found within the “California Floristic Province”.

A handful of the species found in California extend into neighboring states and Mexico, but most manzanita species are “endemic” to California, which means that they are only found here and nowhere else! Manzanitas are adapted to survive nearly every climate in this diverse state and can be found not only at the coast, but also in the mountains, the inland valleys, the deserts and the temperate rainforest. Some parts of the state have more manzanita diversity than others. For example, at least 14 species of manzanita can be seen in the San Luis Obispo area!

Manzanitas are fascinating plants for us here in California, because California is a hotspot for manzanita diversity. In fact, 99 percent of the over 100 species of manzanita that exist on the planet are found within the “California Floristic Province”.

A handful of the species found in California extend into neighboring states and Mexico, but most manzanita species are “endemic” to California, which means

that they are only found here and nowhere else! Manzanitas are adapted to survive nearly every climate in this diverse state and can be found not only at the coast, but also in the mountains, the inland valleys, the deserts and the temperate rainforest. Some parts of the state have more manzanita diversity than others. For example, at least 14 species of manzanita can be seen in the San Luis Obispo area!

Another interesting aspect of manzanitas is the fact that they belong to *Ericaceae*, the same plant family as blueberries and huckleberries, among others. You can really see the family connection when you look at the upside-down “urn shaped” blossoms that many of these plants share in common. You will also see this flower shape on other California native plants that belong to *Ericaceae*, such as Madrone trees (*Arbutus menziesii*) and Salal plants at the coast (*Gaultheria shallon*).

Let’s talk about the two species of manzanita that you are likely to spot here at Burney Falls. The most common one you will see is the Greenleaf Manzanita (*Arctostaphylos patula*). This evergreen shrub is one of the most common shrubs in the park. It has round green leaves and pink blossoms in the springtime. The berries are green but turn red when mature. The bark on the limbs and trunk is shiny, red, and peels away. If you look closely at the little stems that bear the flowers and fruits, you will see that they are adorned with golden or black fuzzy hairs.

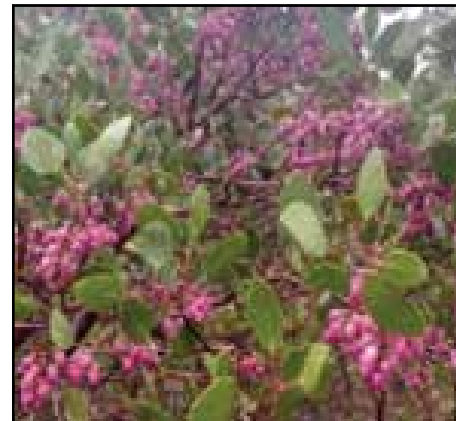
The other manzanita you will see in the park can be found near the beach and boat launch area on the shore of Lake Britton. This manzanita is the Whiteleaf Manzanita (*Arctostaphylos viscida*). They tend to grow a little taller than the Greenleaf Manzanitas, have blossoms with more of a whitish color, and have leaves that are a light, pastel green color. If you look closely at the tiny little stems that bear the flowers and fruits, you will see that they are adorned with tiny, sticky, pink and white hairs.

Those are the two species found at this park, but if you venture up towards higher elevations on your travels, such as Lassen Volcanic National Park, you may encounter the Pinemat Manzanita (*Arctostaphylos nevadensis*) which grows low to the ground and has white flowers.

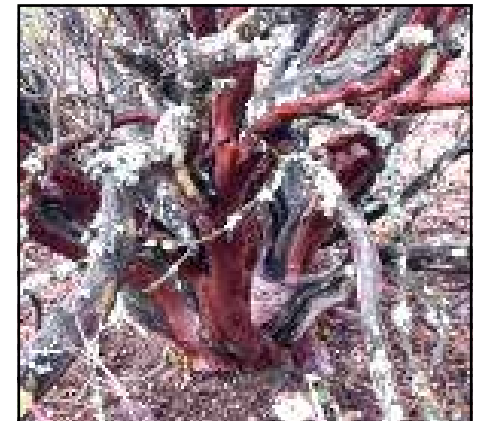
If you venture down towards Redding, you may encounter the Common Manzanita (*Arctostaphylos manzanita*). I encourage you to get out there and explore the natural world as much as you can this summer! For more information about manzanitas, a book I would recommend is the Field Guide to Manzanitas from Backcountry Press.



Here you can see a Greenleaf manzanita to the right of the sign.



A Greenleaf manzanita in bloom.



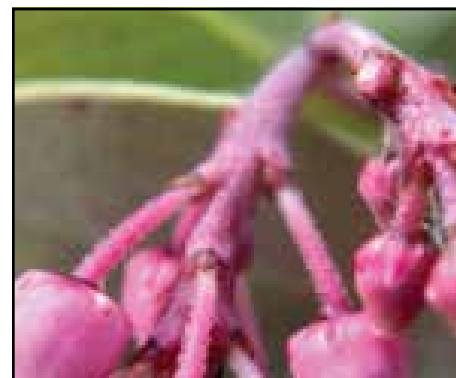
Peeling, red bark on an old manzanita trunk.



The “Urn-shaped” blossoms of a Whiteleaf manzanita.



Here you can see the golden/black hairs of Greenleaf manzanita.



Do you see the tiny pink/white sticky hairs on this Whiteleaf manzanita?



A Whiteleaf manzanita at the Lake Britton beach in the park.

VALLEY HARDWARE & NURSERY

Building Supplies, Lumber, Paint
Sporting Goods, Camping Supplies,
Housewares, Electronics,
Nursery and Garden Supplies,
Appliances and Flooring

43185 Hwy 299 • Fall River Mills

336-5583

Our Night Sky: A Window to the Observable Universe

Stargazers, welcome!

We offer to you a guide of nighttime wonders that can be observed from our area. McArthur-Burney Falls Memorial State Park offers unique and light pollution free stargazing campers can enjoy on a clear night.

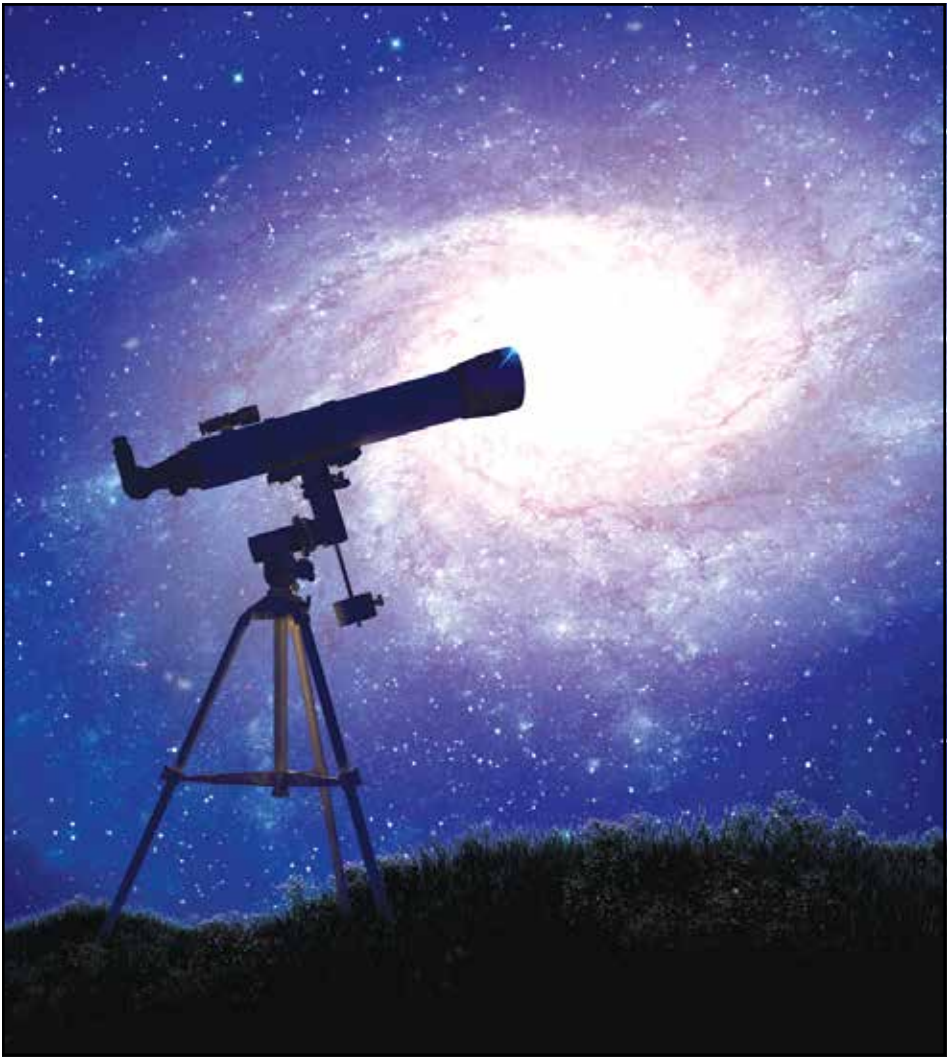
Here's a guide to the celestial wonders you can look forward to this year at the park.

FULL MOONS

- May 12: The Flower Moon
- June 11: Strawberry Moon
- July 10: Buck Moon
- August 9: Sturgeon Moon
- September 7: Corn Moon
- October 6: Hunter's Moon
- November 5: Beaver Moon
- December 4: Cold Moon

EQUINOXES AND SOLSTICES

Summer Solstice 2025 (June 20-21) The longest day of daylight for the year when the height of the sun reaches its highest point in the sky. The exact moment in America beings June 21st, 2025, at 4:42:02 AM
Autumn Equinox 2025 (September 22-23) Marking the beginning of shorter days and longer evenings. This



moment starts, in America, September 22, 2025, at 20:19:18 PM

NEIGHBORING PLANET SIGHTINGS

1. Mercury: Challenging to spot, but visible until early evening.
2. Venus: Rises in the morning light, slightly difficult to see.
3. Mars: Appears little earlier than Venus, average visibility.
4. Juniper: Shines until a bit before midnight, fairly good visibility.
5. Saturn: Rises in the morning, slightly difficult to see.
6. Uranus: Visible until evening but challenging.
7. Neptune: Extremely elusive, rising in the early morning.

STARGAZING SPOTS

New moons are when the sky is darkest and best for stargazing. The dates for the darkest nights fall perfectly between the full moons. We recommend viewing our park's night sky from our Campfire Center, Visitor Center parking lot, or Fisherman's Bridge parking lot for the clearest views.

Remember it can take up to 30 minutes for eyes to gain their best night vision. So take your time.



Pygmy Owl by Charles Barilleaux Creative Commons Attribution 2.0

Wildlife Rescue & Rehabilitation schedule for Burney, Castle Crags Campfire Evening programs

Shasta Wildlife Rescue and Rehabilitation serves Shasta, Tehama, Siskiyou, and Trinity counties as one of the primary wildlife rehabilitation centers for Northern California.

We are located in Anderson, California, in beautiful Anderson River Park.

We are an independent, non-profit organization dedicated to the rescue, rehabilitation and release of sick, orphaned and injured wildlife in Northern California.

Through all of our activities we educate and encourage our community to value the connection between people and the natural environment.

Each year we get between 700-1,000 animals into our care.

Our organization is only able to do this because of amazing volunteers who donate their time and care to help these animals in need.

We offer our services at no charge to the public and rely solely on donations to save the wildlife that come through our doors.

Shasta Wildlife Rescue and Rehabilitation will be at the Saturday Evening Campfire programs on these dates at the following locations:

BURNEY FALLS

June 21, July 5, August 2, August 16, August 30, October 12

CASTLE CRAGS

June 7, June 28, July 26, August 9, August 23

Hope to see you there.

MAYERS MEMORIAL HEALTHCARE DISTRICT



Serving the area since 1956
Providing outstanding patient-centered care

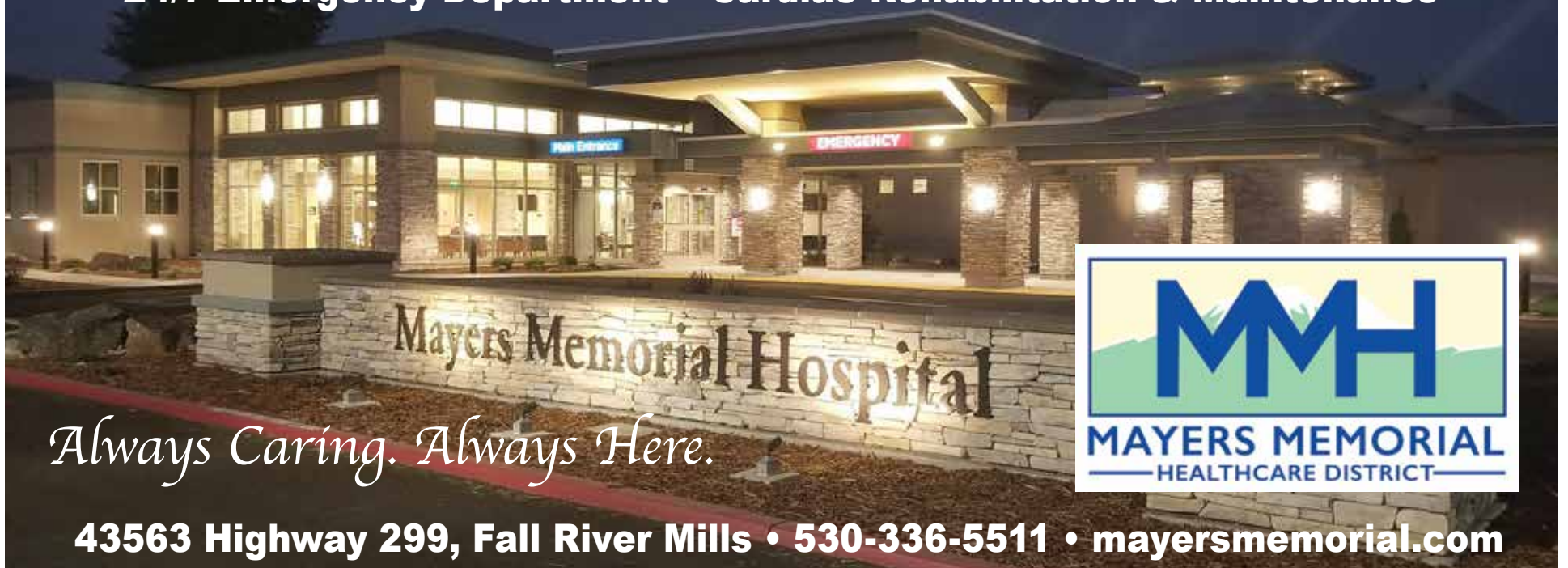
MAYERS RURAL HEALTH CLINIC



PHARMACY



Inpatient Care • Surgery • Skilled Nursing • Hospice • Physical Therapy
Respiratory Therapy • Lab & Imaging Services • Telemedicine Services
24/7 Emergency Department • Cardiac Rehabilitation & Maintenance



Always Caring. Always Here.

43563 Highway 299, Fall River Mills • 530-336-5511 • mayersmemorial.com

HUNGRY?



BORED?

You're Always a Winner

Best Gas Prices In Town

**\$5 FREE PLAY
WITH PURCHASE OF
6 GALLONS OF GAS**

Good Food &
Great Prices
Come Together at

RiverRock
Bar & Grill

**Follow us on Facebook to
keep up on our
Events & Giveaways!**

888.245.2992 x 221

www.PitRiverCasino.com

20265 Tamarack Ave., Burney, CA 96013

Places to Visit in the Area



Volcanic Scenic Highway: For road warriors, the Volcanic Legacy Scenic Byway passes by Burney Falls State Park and offers majestic views of the eastern Shasta volcanic country from Lassen National Park, up past Mt Shasta and into Oregon. Pick up a brochure or book at the Visitor Center and plan some daytime road trips.

Medicine Lake Highlands: Approximately 53 miles from the park, Medicine Lake Highland is an ancient shield volcano with Medicine Lake at the top. Glass Mountain, found here, is a significant outcropping of obsidian rock used by Native Americans for arrowheads and other tools. You can drive right to the base of the mountain.

Lava Beds National Monument: Numerous underground caves and an information visitor center are available. A full day or more can be spent exploring the caves or Captain Jack's stronghold.

Subway Cave: A river of lava over 20,000 years ago left tube-like caves and Subway Cave is the largest accessible tube in the flow. A self-guided trail in the Lassen National Forest is located near the town of Old

Station, ¼ mile north of the junction of Highway 44 and 89 across from Cave Campground. Contact the Old Station Information Center between April and December. Hours vary.



Ahjumawi State Park and Big Lake: The ancestral lands of the Achomawi, whose name translates to “where the waters come together,” is only accessible by boat, canoe, or kayak. The park is situated on the Fall River. Visitors can launch boats into Big Lake at a Pacific Gas & Electric (PG&E) public boat launch known as Rat Farm in McArthur.

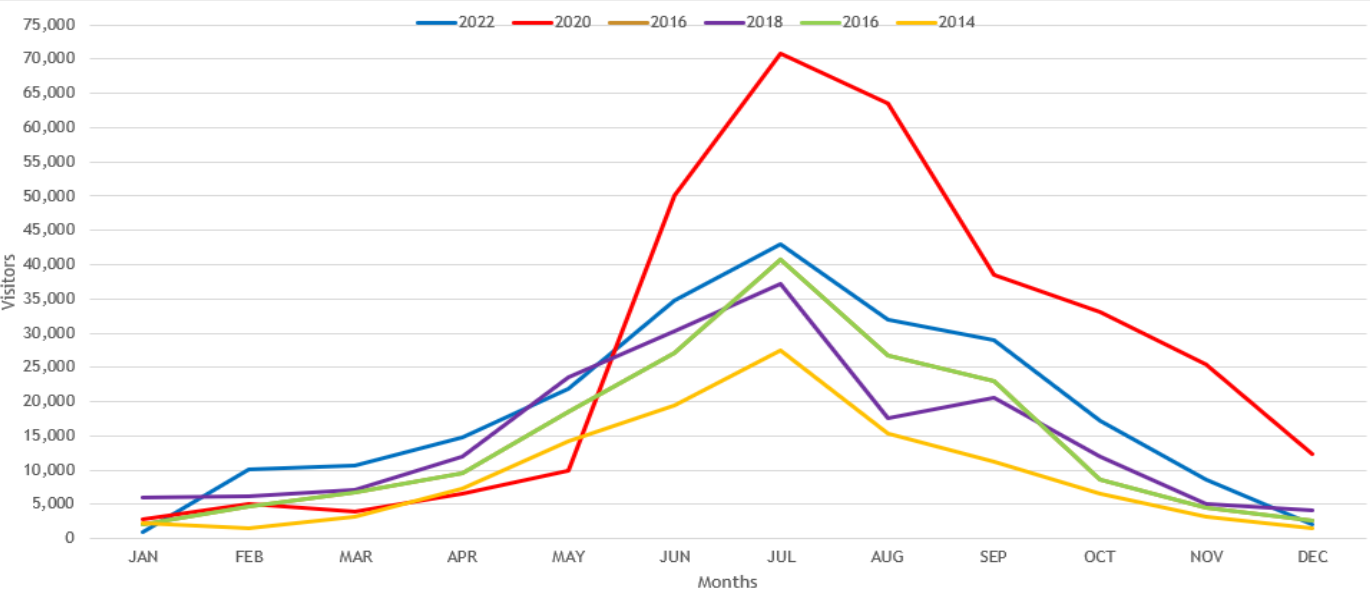


Fort Crook Museum and Historical Society: This park is located in Fall River Mills just west of the central town, and is on Highway 299, 15 minutes east of crossing Highway 89. The museum and round barn offer a look at the European settler's life in the late 1800s.

Baum Lake: Baum Lake is perfect for a peaceful afternoon kayaking or canoeing. Open only to non-motorized vessels it is a sanctuary for exotic bird life and an archaeologically significant site for Native Americans. The lake is one of the region's most popular fly fishing locations.

McCloud Waterfalls: The McCloud River Trail passes three beautiful waterfalls as it winds through a canyon of basalt lava rock. This smooth, well maintained trail offers summer swimming, fall foliage, and an early spring thaw, making it fun and accessible almost year-round. Follow Highway 89 north. Turn south on Road 40N44. (Look for a Fowlers Camp/McCloud Falls sign.)

Burney Falls Day Use Visitation



If you’ve visited the park over the last several summers you have probably noticed the increase in visitation. Long lines and wait times, nowhere to park, and the trails being crowded are just a few of the issues affecting this beautiful park.

The graph above illustrates our jump in Day Use visitation from 2014 to 2022. Keep in mind this graph doesn’t include campers or those that park outside the park and walk in. In 2014 we had around 114,000 Day Use visitors come to Burney Falls. In 2022 that number almost doubled to 224,000. The busiest year this park has had in its history was in 2020 when we reached 322,000 Day Use visitors.

The increase in social media popularity and the pandemic in 2020 played a huge role in the increase in visitation.

These drastic increases in visitation have thus taken their toll on the park infrastructure (and its employees) resulting in the trail closure for rehabilitation.

What else can be found inside the State Park

TIMING MATTERS

Summer weekends at McArthur-Burney Falls Park are bustling with activity. To ensure the best experience, we recommend visiting outside peak hours. Otherwise, you might find yourself parking a bit farther from the Overlook or being asked to return later when the park reaches capacity.

CAMPING AND CABINS

With over 125 camping sites, including reservable cabins, we offer a variety of options for your stay. Wake up to the sounds of nature and immerse yourself in the serene surroundings. Don’t forget to explore our two large picnic areas and enjoy a leisurely meal amidst the beauty of the outdoors.

LAKE-SIDE ADVENTURES

Head down to the lake for a refreshing swim or rent a boat from our launch ramp. Whether you’re paddling across the water or simply basking in the sun on the beach, the reservoir called Lake Britton offers a tranquil escape. There are restrooms and a fish cleaning station down at the marina.

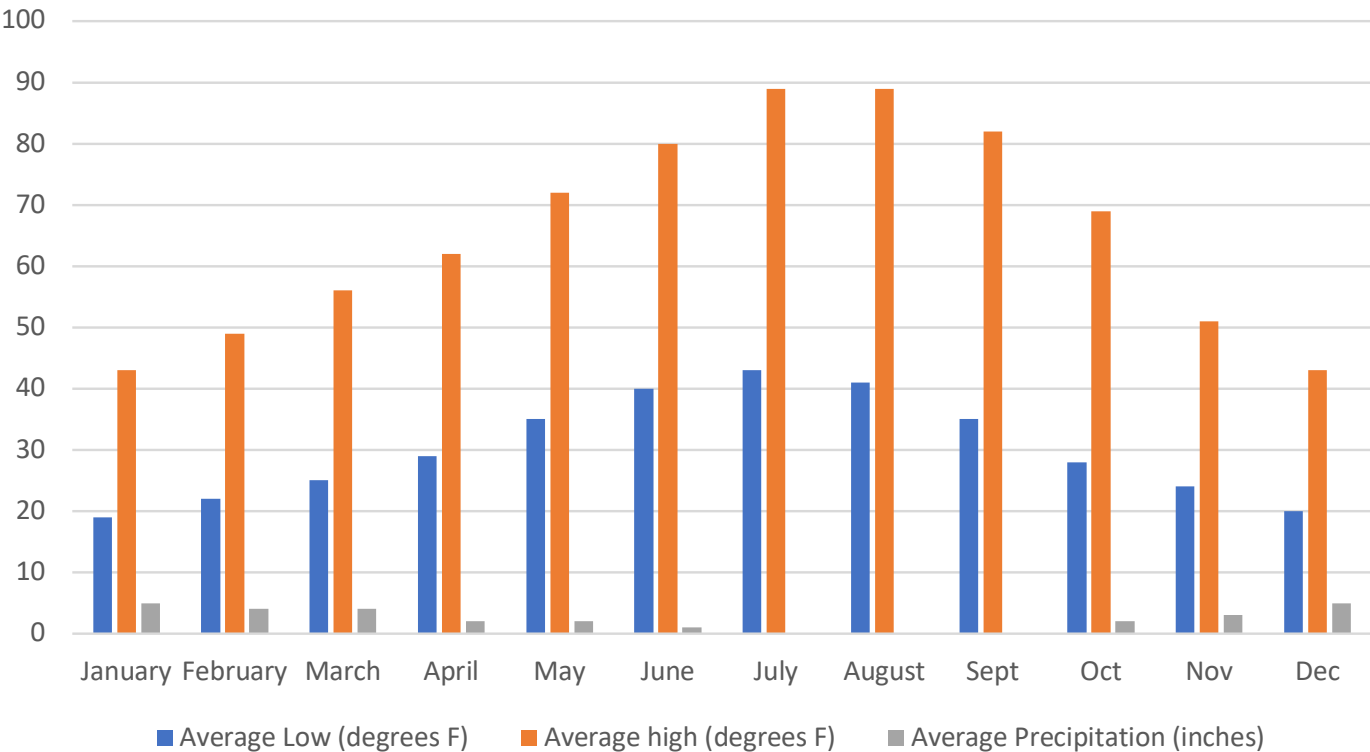
CAMPFIRE DELIGHTS

Our camp store stocks essential supplies and tasty snacks. Plus, they generously donate the ingredients for S’mores for our campfire programs. Join us most Saturday evenings at the Campfire Center for a cozy and delightful experience. Public Restrooms are located near the camp store.

INTERPRETIVE ACTIVITIES

Immerse yourself in the park’s rich history and natural wonders through our interpretive activities. From guided walks and talks to Art in the Park sessions, Jr. Rangers, and singalongs, there’s something for everyone. Keep an eye out for weekly interpretive notices posted near the restrooms to stay informed.

Average Temps and Precipitation at McArthur Burney Falls



Mountain Jewels – The team that supports McArthur-Burney Falls Memorial State Park

And what Jewels they are! The men from the Mountain Jewels Ranch travel each month to spend the morning sorting, recycling, and bagging firewood to raise funds that support activities for campers and visitors to McArthur-Burney Falls Memorial State Park.

What would campers do without the firewood bundles that keep them warm and provide flames for those famous S'mores we all loved as kids? You may see them in their van picnicking or hiking the trails...Give them a big Thank You!!

Buying firewood from the park not only supports important programs, it also helps protect our forests. Transporting outside firewood to the park can introduce nasty pests and diseases including the pine bark beetle and sudden oak death.

**Protect the park's forest and
BUY IT WHERE YOU BURN IT**



WE RECYCLE!

All California State Parks are required to recycle their trash where appropriate, and you can help.

The proceeds from recycling help support interpretive activities at the park and contribute to our friends at Mountain Jewels Ranch, who assist us with the sorting of recyclables. The appropriate materials for going in the recycling cans and bins are:

- All aluminum cans.
- Plastic containers that say CA-CRV on them or a triangle with a number. Plastics that do not have these cannot be recycled at this time.
- Glass: clear, green, and brown can all be recycled.

We are truly fortunate that the ranch helps us with recycling throughout the season. They are a licensed, non-profit, residential care facility for developmentally disabled adults, located on a large ranch outside the town of McArthur.





“Is it too warm to take my dog along today”

Warm weather can be a killer for a dog left inside a car. When it's 85 degrees outside, the temperature inside a car – even with the windows cracked – can soar to 120 degrees!

Leaving a dog for “just a minute” may be too long! Dogs rely on panting and aren't able to sweat. They can't cool themselves like people and their body temperature can rise quickly. Dogs left in the heat can suffer severe illness, organ damage, or even death in a matter of minutes.

If you see a dog in a hot car: Try and locate the dog's guardians and then notify a Park Ranger. If the dog is overcome by heat, wet the dog's feet, coat it with water, and seek veterinary care immediately.

Your Dog at the Park



General Dog/Pet Rules

- Must be on a leash and under control
- Are *NOT* permitted in buildings, on the beach, or on trails (except for Pioneer Cemetery Trail)
- Must be confined to a vehicle or tent at night
- *CANNOT* be left unattended at any time

Violations may result in \$400 citation

Why can't I bring my dog on the Falls Loop Trail?

Your dog is a predator

- Its scent will linger and scare off wildlife
- Even the best trained dog will chase after a squirrel

Be considerate of your fellow visitor

- Not everyone enjoys dogs or feels comfortable around them
- Some people are intimidated by dogs—even friendly ones

Park Regulation, common courtesy, and good judgement all require that you take special care when bringing your pet to this natural area. **Thank you for your cooperation!**

Service Animals

Service Animals are trained to assist individuals with disabilities as they go about their normal lives. Service Animals are allowed and welcome on all trails and any areas open to the public.

A service Animal is one as defined by the Americans with Disabilities Act (ADA). An emotional support animal does not meet this definition and must follow all applicable rules.

