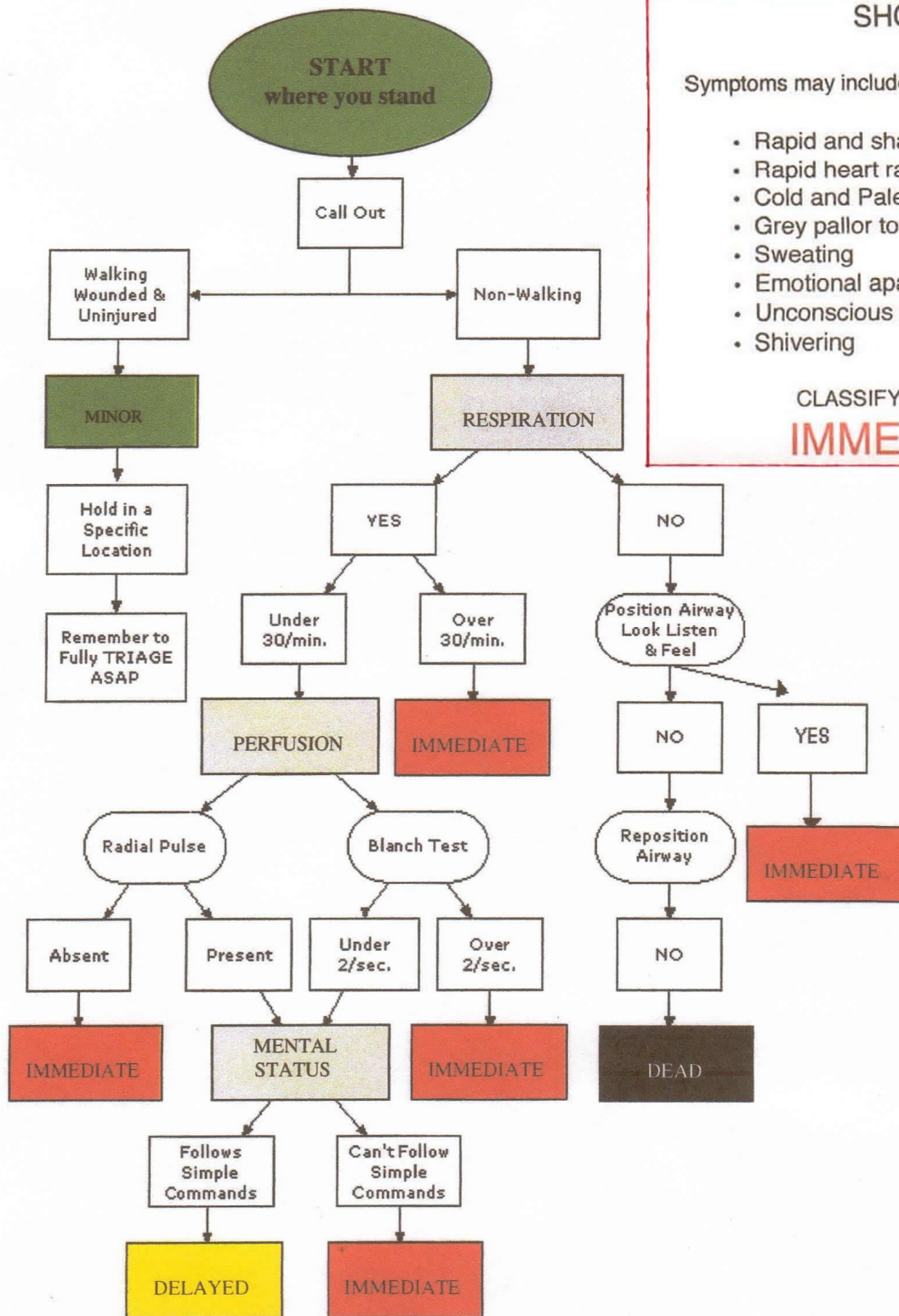


START - Simple Triage And Rapid Treatment



SHOCK

Symptoms may include some of the following:

- Rapid and shallow breathing
- Rapid heart rate
- Cold and Pale skin
- Grey pallor to skin
- Sweating
- Emotional apathy or anxiety
- Unconscious or comatose
- Shivering

CLASSIFY SHOCK AS
IMMEDIATE