

Spring, 2021

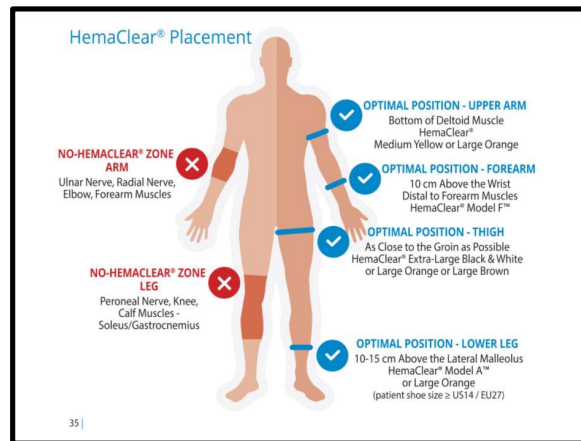
Subject: Using HemaClear® for a Limb Surgery Product Trial.

Thank you for requesting a trial of the HemaClear sterile exsanguination tourniquet. HemaClear effectively creates a bloodless, sterile surgical field, with superb exsanguination, mitigating the risk of clotting in the limb and emboli. The tourniquet action of HemaClear effectively blocks arterial blood flow at a lower occlusion pressure, to prevent re-entry of blood. Applied in seconds – the narrow profile has been proven to produce less pain, less tissue compression, and no nerve injury in over 1.5 million uses. No need for Esmarch bandages, stockinette, padding or a pneumatic pump & cuff; HemaClear replaces all four. HemaClear fits all patients and stays in place, even with obese limbs.



Enclosed with this letter, we are sending you a sampler of HemaClear models specifically assembled for your own procedures, a user manual, and sterile measuring tapes to correctly select the right HemaClear for your patient.

The chart to the right, shows the correct locations to place the HemaClear ring after roll-up, for optimal exposure, free mobility and minimal intra- and post-operative pain. Be sure to follow the User Guide instructions concerning contraindications before applying the HemaClear.



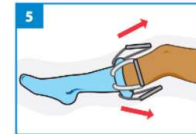
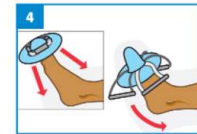
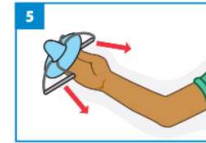
Product Trial Tips

- ✓ Verify that HemaClear is not contraindicated for your patient (page20 of user guide) and Wells Score for DVT screening on page 21.
- ✓ Obtain surgeon's instruction on placement site.
- ✓ Measure the circumference of the limb at placement site; use color-coded ruler.
- ✓ Measure patients' blood pressure; assess risk of BP rising during surgery.
- ✓ Use the circumference and anticipated blood pressure to select the correct

BE SURE TO CHECK OUR TRAINING VIDEOS AT WWW.HEMACLEAR.COM OR
REQUEST A WEBINAR TRAINING SESSION.



- ✓ HemaClear size. (See product catalogue at end of this letter)
- ✓ Make sure to speak to the anaesthesiologist about patients' blood pressure control - blood pressure may increase during surgery if the patient experiences pain. If BP is excessive, you may see tourniquet leak if the blood pressure exceeds HemaClear model working pressure.
- ✓ Following limb prepping and draping; open the two pouches using sterile technique and keep the protective card to be used after the procedure to remove the HemaClear.
- ✓ Insert patients' fingers/toes into the HC ring – take care not to leave any finger/toe behind... outside of the ring.
- ✓ Applying to the leg: start with one handle facing the sole of the foot, and the other handle facing the top of the foot. Pull one handle over the heel before pulling HemaClear up the limb.
- ✓ Coordinate stabilization of wrist/ankle with an assistant.
- ✓ Pull the handles up the limb, in along the axis and parallel to the limb – do not pull perpendicularly (outwards) – to avoid turning the ring without advancing it up the limb.
- ✓ Roll the HC up the limb exclusively by the handles. Never use your hands to glide or drag the ring directly (to avoid skin damage).
- ✓ Wrap the excess of the straps around your fist as you advance the HemaClear up the limb.
- ✓ When reaching the desired placement spot, release the handles – they can be cut off, just left there, or tied together.
- ✓ When HemaClear is in place, this is "Tourniquet time ON" – make sure to note this time.
- ✓ Wet the stockinette at the place you want to cut it to expose the incision spot. Wetting minimizes the spreading of lint.
- ✓ Cut the stockinette to expose the limb - Alternatively, the stockinette can be completely cut away.
- ✓ During surgery make sure that patients' blood pressure is controlled not to exceed the chosen HemaClear model limit.
- ✓ After (or before, at surgeon's discretion) suturing the incision: insert the protective card beneath the elastic ring to protect the patient's skin. Then cut the ring completely with a scalpel, to remove the HemaClear. (scissors will not cut through the ring). The rest of the stockinet can be cut with scissors.
- ✓ This time should be noted as "Tourniquet Off" time.
- ✓ Verify that blood has returned to toes or fingers.



Please feel free to reach out to your local OHK representative or to us with any questions or comments at 866-503-1470 or Info@hemaclear.com.

Noam Gavriely, MD, DSc
Chief Medical Officer & CEO

BE SURE TO CHECK OUR TRAINING VIDEOS AT WWW.HEMACLEAR.COM OR
REQUEST A WEBINAR TRAINING SESSION.



HemaClear® SELECTION GUIDE

HemaClear® Size	Small	Medium			Large			X-Large
Color	Pink	Green	Red	Yellow	Blue	Orange	Brown	Black & White
Patient's Systolic Blood Pressure Limit	<130 mm Hg	<130 mm Hg	<160 mm Hg	<190 mm Hg	<130 mm Hg	<160 mm Hg	<190 mm Hg	<160 mm Hg
Length	<50 cm	<80 cm			<95 cm	<110 cm		<120 cm
Circumference	14-28 cm	24-40 cm			30-55 cm			50-85 cm

Wrist & Hand | Foot & Ankle

HemaClear® Size	Model F™	Model A™
Color	White	Silver
Systolic Blood Pressure	<160 mm Hg	<160 mm Hg
Distance	<40 cm	<50 cm
Circumference	14-34 cm	22-32 cm

Product	Cat#	Units/Case*	Blood Pressure	Skin Pressure	Circumference
SMALL Pink	PRH-028-PI-01A	10	< 130 mmHg	197±24 mmHg	14-28 cm
MEDIUM Yellow	PRH-040-YE-01A	10	< 190 mmHg	254±43 mmHg	24-40 cm
MEDIUM Red	PRH-040-RE-01A	10	< 160 mmHg	246±42 mmHg	24-40 cm
MEDIUM Green	PRH-040-GR-01A	10	< 130 mmHg	234±42 mmHg	24-40 cm
LARGE Brown	PRH-060-BR-01A	10	< 190 mmHg	364±49 mmHg	30-55 cm
LARGE Orange	PRH-060-OR-01A	10	< 160 mmHg	329±47 mmHg	30-55 cm
LARGE Blue	PRH-060-BL-01A	10	< 130 mmHg	309±40 mmHg	30-55 cm
X-LARGE-Black&White	PRH-090-BW-01A	10	< 160 mmHg	320±19 mmHg	50-85 cm
MODEL F	PRH-035-FA-01A	25	< 160 mmHg	248±33 mmHg	14-34 cm
MODEL A	PRH-032-MA-01A	12	< 160 mmHg	176±9 mmHg	22-32 cm