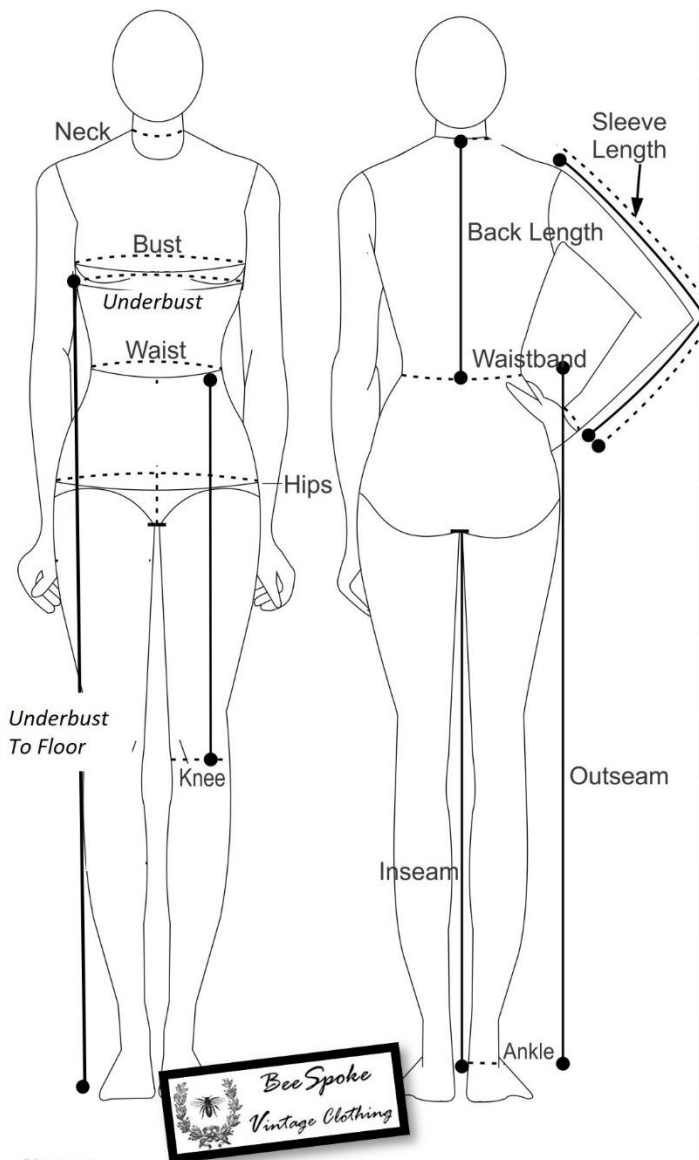




Measurement Sheet for _____

Date Taken _____

Signature: _____



Notes:

- Take measurements over ALL undergarments that will be worn with finished garment as well as shoes.
- It is a good idea to have someone help you with your measurements to ensure they are as accurate as possible.
- Custom orders are made to measurements provided and cannot be returned.
- * For Regency and Raised Waist 1970s Garments

Item	Measurement (in)
Height	
Bra Size	
Bust (across center of bust)	
Waist (natural waist across bellybutton)	
Hips (fullest part)	
Back Length (base of neck to waist)	
Sleeve Length (sh to wrist)	
Upper Arm (for short sleeves)	
Neck	
Wrist	
Waist to Knee	
Waist to Desired Skirt Length	
Waist to Ankle (outseam)	
Waist to Floor (in shoes)	
*Underbust (similar to where a bra strap would be)	
*Underbust to floor	
*Underbust to Desired Hem	