

THE *Sunday* BRIEF

December 3rd, 2023



Join us December 13th at 6pm for our Symbols of Christmas Family Event! We'll travel to 5 stations to learn all about a Christmas symbol and what it means to the story of Christmas. This is a family event designed to help your entire family learn about the true meaning of Christmas. This is a **FREE** event!! Please RSVP through the QR Code or visit www.AsburyChurch.org/events.

It's FREE
but let us
know you
are coming



Wednesday, December 13th from 6-8pm



All-Church Advent Study Begins TODAY -- December 3rd

Join us as we begin an Advent study together in the Gym beginning December 3rd-24th from 9:15-10:15am during the Sunday school hour. **The video and study guide is available on RightNowMedia -- Advent, JD Greear.** We will take a deeper look at Jesus as Emmanuel, our Wonderful Counselor, the Everlasting Father, and the great I Am. When you know Jesus, you will realize Christmas is more than a nice story—the arrival of Jesus changes everything.

Donate Vitamins for the DR Mission Trip by December 10th

The MMI Dominican Republic trip is January 27 to February 4, 2024. We normally purchase 18-20,000 doses of adult multi-vitamins to dispense to the patients. We usually give a 30 day supply to almost all of the patients seen (that represents close to 700 patients). Due to increased needs and chaos in the world, we could not buy vitamins from our suppliers this year. **Can you help?** Bring your donations to the Church by December 3rd. The group will be packing supplies on December 10th. **Here is what we need:**

- **Larger volume- the better.** (Fewer bottles to pack and more tablets per bottle cost less per tablet)
- **Tablets are better than gummies.** (Tropical temperatures make them stick together)
- **Independent testing helps to assure quality.** (Like USP, NSF, UL or CL stamped on the labels are all good oversight companies that test vitamins)
- **Stick with Big Companies** (Sam's, Costco, Walgreens, CVS, Dillons, etc.)



Blue CHRISTMAS SERVICE

The holiday season can be difficult for those whose hearts are hurting.
You are not alone.

Please join us in the Asbury Sanctuary for the Blue Christmas Service --
a gentle, contemplative service meant to offer comfort and hope
for those carrying pain or loss during this season.

Thursday, December 21st - 6:30pm



The Cupboard

Food Co-op
New Covenant Life Support Center

FOOD PANTRY NEEDS

Chicken/Tuna Salad Kits
Vienna Sausage • Slim Jims
Peanut Butter



THE Wish

A CHRISTMAS PROGRAM

CALLING ALL KIDS!

Asbury Children's
Christmas Program
Sunday, December 17th
at the 10:30am Worship
Service!
*Please have kids at the
Church by 9:30am.*

How to Safely & Securely Give to Asbury

- SCAN THE QR CODE
- ON THE WEB: <https://asburychurch.org/giving>
- THROUGH THE REALM CONNECT APP: Download the App to give safely and easily to the Church from your phone!
- TEXT-2-GIVE: Text "AsburyICT" to 73256 to give from your phone (You will receive a text with a link. Follow the directions.)
- MAIL: 2801 W. 15TH ST., WICHITA, KS 67203
- IN-PERSON ON SUNDAYS: Giving Plates located inside Sanctuary doors



SCAN ME

NOVEMBER FINANCIALS

General Giving:

\$44,850.50

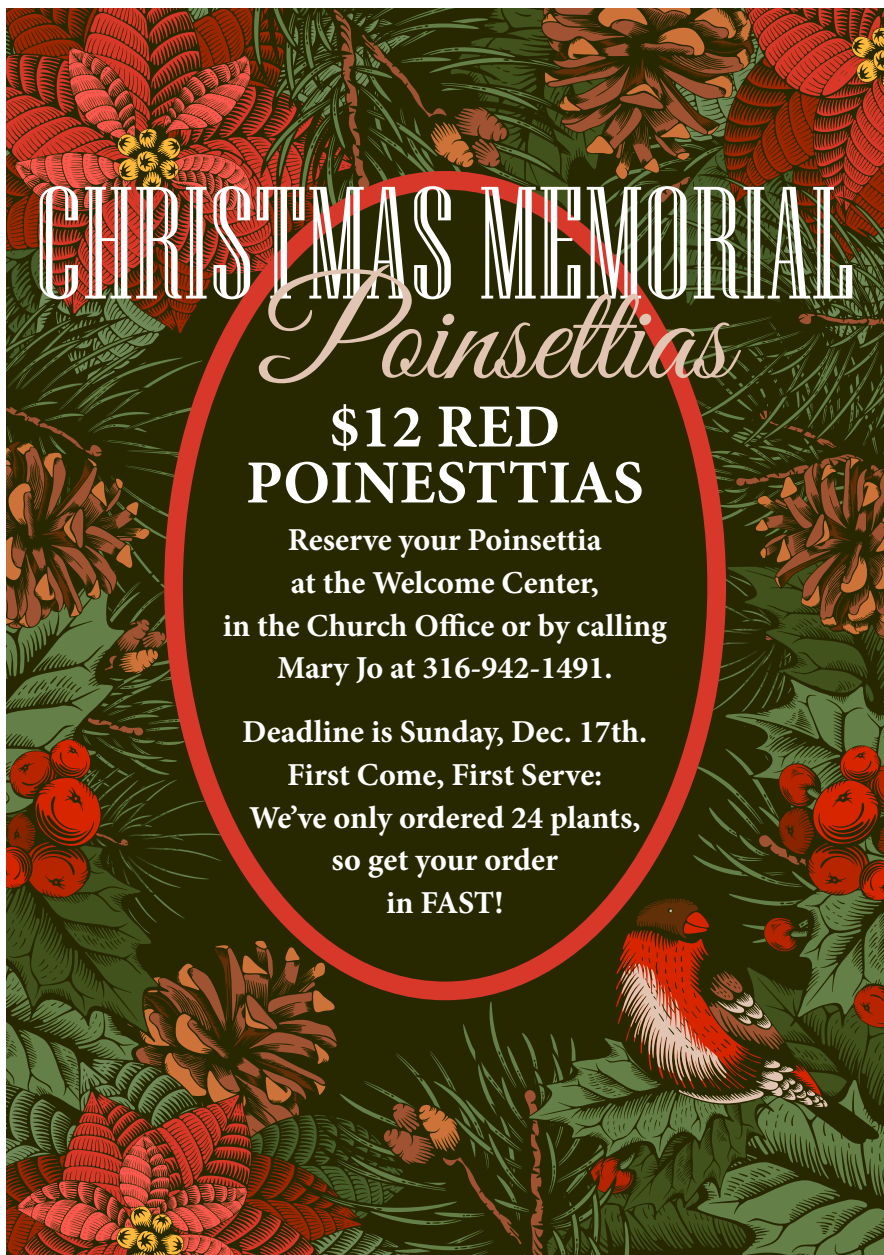
General Budget:

\$43,978.11

Mission Giving:

\$3,795.00

Total: \$48,645.50



CHRISTMAS MEMORIAL *Poinsettias*

**\$12 RED
POINSETTIAS**

Reserve your Poinsettia
at the Welcome Center,
in the Church Office or by calling
Mary Jo at 316-942-1491.

Deadline is Sunday, Dec. 17th.

First Come, First Serve:
We've only ordered 24 plants,
so get your order
in FAST!



- **Wednesday, Dec. 6th:** Last Wednesday Evening Activity of the Year!
- **Sunday, Dec. 10th:** VITAMIN Sunday! Bring your vitamin donation to Church for the MMI Mission Trip!
- **Wednesday, Dec. 13th:** Symbols of Christmas Family Event @ 6pm
- **Sunday, Dec. 17th:** Children's Christmas Program at the 10:30am worship service. Kids need to be at the church by 9:30am.
- **Tuesday, Dec. 19th:** CDC & Preschool Christmas Program @ 6pm



WEDNESDAYS @ ASBURY

DECEMBER 6TH: LAST WEDNESDAY OF THE YEAR!

DINNER (5-6pm): \$6/Adult • \$4/Kid • \$20/Family Max

- **12/6/23:** Turkey/Chicken & Noodles, Mashed Potatoes, Green beans, roll, Chocolate Cake

PRAYER (5:45-6:30PM): Join us for a time of prayer together in the Chapel. Come and go at your convenience.

KIDS CLUB (6-7:30pm): Wednesdays are for Kids K-5th Grade.

ASBURY YOUTH (6-7:30pm): Students 6th-12th Grade

ADULT CLASSES (6:30pm): A Deeper Dive (Atrium)

*Support the Asbury
Missionaries by
purchasing an item or
two in the Base Camp
Pop-Up with a Purpose
Shop! Christmas is just
around the corner...
we just might have the
perfect gift for those
you love!*



Angel Tree Schedule: Please Help!

Here is the schedule for Angel Tree events this year at Asbury Church:

- **NOW:** Pick up a tag for a gift from the Angel Tree in the Foyer
- **December 10th:** All Angel Tree wrapped gifts must be returned by noon.
- **December 10th:** 1pm Gift sorting in the Sanctuary. *Volunteers are needed. You can sign up at the Angel Tree table*
- **December 15th, Friday 10am-6pm and December 16th Saturday 9am-6pm:** Angel Tree Gift pick up. *Volunteers are needed for 2-3 hour shifts. You can sign up at the Angel Tree table beginning Sunday, November 26th.*

For more information or if you have questions about Angel Tree...

Contact Deb Derber (316) 282-5443



ASBURY PRAYER GUIDE

- **Sunday December 3rd:** Lord Jesus, You gave the Church the season of Advent, to deeply ponder Your coming as an infant, and to look with longing at Your coming in majesty. You also gave us this season as a fresh start, as the Church begins her year again. May we, as we contemplate eternal things, set our hearts this year not on what is seen, but what is unseen, that we may be prepared for Your coming again. Amen.
- **Monday December 4th:** Prayerfully read or listen to Isaiah 7:14 and Matthew 1:22-23. These passages are very familiar, and sometimes it is hard to see them with "fresh" eyes. Ask the Lord to help you each day this week to give you a deeper understanding of these passages.
- **Tuesday December 5th:** Prayerfully read or listen to Isaiah 9:6-7. How does it impact you to know that "the government will be on His shoulders?" Of the many names and attributes listed in these verses, is there one or two which affect you more than the others? Why?
- **Wednesday December 6th:** FASTING DAY! Pray and fast as you are able (in whatever way is appropriate for you, keeping in mind a Biblical Fast is fasting from some/all foods). Consider taking up a specific fasting practice for Advent, in preparation to receive Christ in a deeper way at Christmas. What food(s) or habit(s) can you refrain from, either one day/week, or throughout this season, in order to draw nearer to the Lord? If you have never fasted before (or not in some time), pray about this and ask the Lord if this is a time for you to begin.
- **Thursday December 7th:** Prayerfully read or listen to Isaiah 9:2 with John 8:12. Have you ever connected these two passages before? What do you think it means that Jesus Himself is the "Light" (see also Matt. 17:2)? Also consider that the definite article is used in John 8:12 (the word "the", rather than "a"). How does this impact conversations you may have with unbelievers?
- **Friday December 8th:** Prayerfully read or listen to Matthew 28:20b. Considering that Jesus is Immanuel and the Light of the World, how have you experienced Jesus in these ways?
- **Saturday December 9:** Take time to look over all the passages of Scripture we have studied and prayed over this week, as well as the things you have learned. Be still, and listen to what the Lord would tell you, personally, today.



Contact Us: Address: 2801 W. 15th St. N. • Wichita, KS 67203



Phone: 316-942-1491 • Text: 316-768-7858

www.AsburyChurch.org

Asbury Church is a congregation of the Global Methodist Church whose mission is to make disciples of Jesus Christ who worship passionately, love extravagantly, and witness boldly.

