



Mech 416 Soil is a mechanically jointed range of pipes and fittings in 50mm to 150mm diameter. They are suitable for above ground soil and waste systems.

Mech 416 ductile Cast Iron couplings are manufactured in accordance with BS EN 1563, ISO 1083 with minimum strength of 420N/mm².

All couplings are supplied with EPDM rubber sealing rings which are suitable for most applications. Where especially aggressive waste liquids are to be discharged please check with our technical department.

Installation guidance is available at www.hargreavesfoundry.co.uk

MECH 416 SOIL



COATINGS

Pipes

External: One part epoxy coating in matt black.

Internal: Two part epoxy coating yellow.

Fittings

Internal and external one part epoxy matt black.

PIPES & COUPLINGS

97

BENDS

98-99

BRANCHES

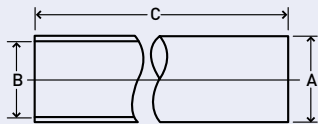
100-101

OTHER FITTINGS

102-103

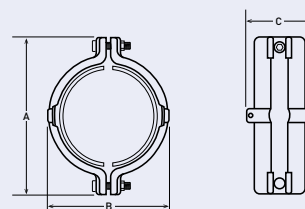
BRACKETS & SUNDRIES

104



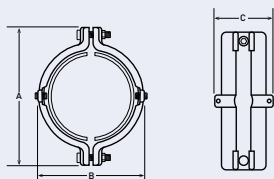
DOUBLE SPIGOT PIPES

Product Code	Diameter (mm)	Max. Overall Dia. A (mm)	Max. Overall Dia. B (mm)	Max. Overall Dia. C (mm)	Nominal Weight (kg)	Price
MS2001	50	60	47.50	3000	15.7	£108.20
MS3001	70	80	68.25	3000	19.4	£118.97
MS4001	100	112	97.50	3000	29.7	£147.17
MS6001	150	162	146.25	3000	45.2	£289.70



DUCTILE IRON COUPLINGS

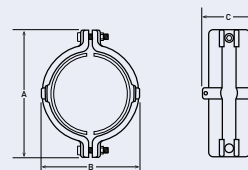
Product Code	Diameter (mm)	A (mm)	B (mm)	C (mm)	Nominal Weight (kg)	Price
MS2012	50	117	79	69	0.7	£17.88
MS3012	70	137	100	73	0.8	£19.70
MS4012	100	172	132	73	1.1	£25.47
MS6012	150	223	180	95	2.0	£51.29



Supplied with grub screws for continuity.

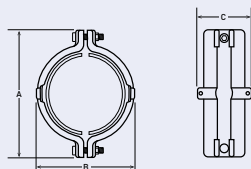
DUCTILE IRON COUPLINGS WITH CONTINUITY

Product Code	Diameter (mm)	A (mm)	B (mm)	C (mm)	Nominal Weight (kg)	Price
MS2012C	50	117	79	69	0.7	£19.71
MS3012C	70	137	100	73	0.8	£21.51
MS4012C	100	172	132	73	1.1	£27.30
MS6012C	150	223	180	95	2.0	£53.11



CONVERSION - MECH 416 TO LCC SOIL

Product Code	Mech 416 Diameter (mm)	LCC Diameter (mm)	A (mm)	B (mm)	C (mm)	Nominal Weight (kg)	Price
MS3018	70	65	137	100	73	0.9	£25.81
MS4017	100	90	172	132	73	1.2	£33.09



CONVERSION COUPLING - MECH 416 TO ALTERNATIVELY SIZED EQUIVALENT SYSTEMS

Product Code	Mech 416 Diameter (mm)	Alternative Diameter (mm)	A (mm)	B (mm)	C (mm)	Nominal Weight (kg)	Price
MS3019	70	75	142	105	73	1.0	£25.81

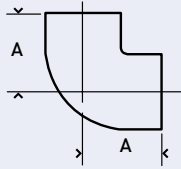


If you need any assistance of a technical nature, please feel free to give us a call.



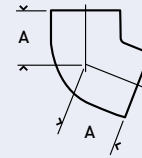
SITE SURVEYS

If you need us to visit a site, we're happy to oblige. We can assist with working out quantities required or any unusual requirements.



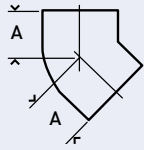
87.5° SHORT RADIUS BENDS

Product Code	Diameter [mm]	A [mm]	Nominal Weight [kg]	Price
MS2003	50	75	0.8	£29.95
MS3003	70	90	1.3	£31.40
MS4003M	100	145	2.5	£46.20
MS6003	150	145	5.1	£81.25



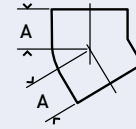
67.5° SHORT RADIUS BENDS

Product Code	Diameter [mm]	A [mm]	Nominal Weight [kg]	Price
MS4004M	100	135	3.0	£46.20



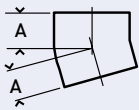
45° SHORT RADIUS BENDS

Product Code	Diameter [mm]	A [mm]	Nominal Weight [kg]	Price
MS2005	50	50	0.6	£29.95
MS3005	70	60	0.9	£31.40
MS4005M	100	135	2.7	£46.20
MS6005	150	90	3.6	£81.25



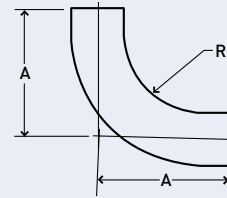
30° SHORT RADIUS BENDS

Product Code	Diameter [mm]	A [mm]	Nominal Weight [kg]	Price
MS4006	100	60	1.4	£38.99



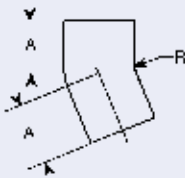
15° SHORT RADIUS BENDS

Product Code	Diameter [mm]	A [mm]	Nominal Weight [kg]	Price
MS4007	100	50	0.6	£38.99



87.5° LONG RADIUS BENDS

Product Code	Diameter [mm]	A [mm]	R [mm]	Nominal Weight [kg]	Price
MS4008	100	269	180	5.3	£78.22
MS6008	150	274	150	10.7	£187.70



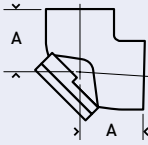
22.5° LONG RADIUS BENDS

Product Code	Diameter [mm]	A [mm]	R [mm]	Nominal Weight [kg]	Price
MS4009	100	90	180	2.2	£72.81

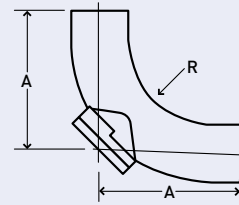


SPECIAL BESPOKE CASTINGS

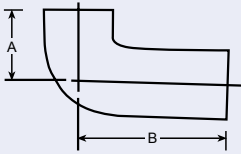
If you don't see a product within this brochure, we have the knowledge, experience and capability to manufacture bespoke castings and fabricated products to support our comprehensive standard ranges.

**87.5° SHORT RADIUS BENDS WITH DOOR**

Product Code	Diameter [mm]	A [mm]	Nominal Weight [kg]	Price
MS3010	70	90	2.1	£68.27
MS4010M	100	145	4.1	£96.51

**87.5° LONG RADIUS BENDS WITH DOOR**

Product Code	Diameter [mm]	A [mm]	R [mm]	Nominal Weight [kg]	Price
MS4011	100	269	125	7.3	£124.69
MS6011	150	274	150	12.7	£236.13

**87.5° LONG TAIL END**

Product Code	Diameter [mm]	A [mm]	R [mm]	Nominal Weight [kg]	Price
MS4013	100	110	250	4.0	£61.12



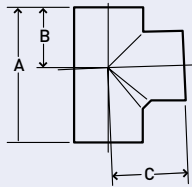
TECHNICAL
SUPPORT

If you need any assistance of a technical nature,
please feel free to give us a call.



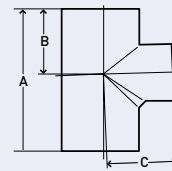
SITE
SURVEYS

If you need us to visit a site, we're happy to oblige.
We can assist with working out quantities required
or any unusual requirements.



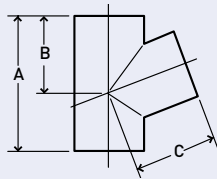
87.5° SINGLE EQUAL BRANCHES

Product Code	Diameter [mm]	A [mm]	B [mm]	C [mm]	Nominal Weight [kg]	Price
MS2020	50 x 50	117	66	80	1.1	£47.31
MS3021	70 x 70	137	83	95	1.8	£50.21



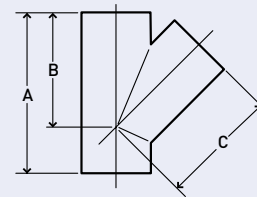
87.5° SINGLE UNEQUAL BRANCHES

Product Code	Diameter [mm]	A [mm]	B [mm]	C [mm]	Nominal Weight [kg]	Price
MS3020	70 x 50	155	72	90	1.5	£50.21
MS4020	100 x 50	170	76	105	2.2	£69.95
MS4021	100 x 70	190	88	110	2.5	£69.95



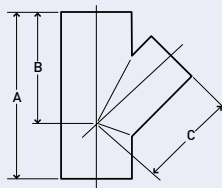
67.5° SINGLE EQUAL BRANCHES

Product Code	Diameter [mm]	A [mm]	B [mm]	C [mm]	Nominal Weight [kg]	Price
MS4025	100 x 100	215	130	130	3.4	£69.95



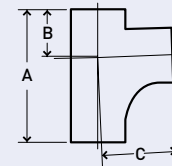
45.5° SINGLE EQUAL BRANCHES

Product Code	Diameter [mm]	A [mm]	B [mm]	C [mm]	Nominal Weight [kg]	Price
MS2026	50 x 50	160	115	120	1.3	£47.31
MS3027	70 x 70	200	145	150	2.2	£50.21
MS4028	100 x 100	260	190	190	4.3	£69.95
MS6027	150 x 150	355	265	265	10.5	£178.10



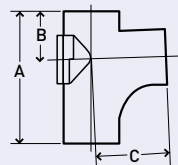
45.5° SINGLE UNEQUAL BRANCHES

Product Code	Diameter [mm]	A [mm]	B [mm]	C [mm]	Nominal Weight [kg]	Price
MS3026	70 x 50	170	130	130	1.8	£50.21
MS4026	100 x 50	180	150	150	2.4	£69.95
MS4027	100 x 70	215	170	170	3.1	£69.95
MS6026	150 x 100	280	225	225	5.8	£138.97



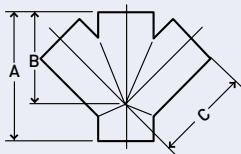
87.5° SINGLE RADIUS CURVE BRANCHES

Product Code	Diameter [mm]	A [mm]	B [mm]	C [mm]	Nominal Weight [kg]	Price
MS4030	100 x 100	260	102	150	4.1	£69.95
MS6030	150 x 100	375	115	202	6.5	£138.97
MS6031	150 x 150	400	135	260	11.7	£178.10



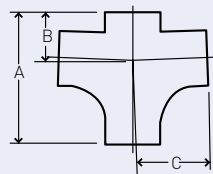
87.5° SINGLE RADIUS CURVE BRANCHES WITH DOOR

Product Code	Diameter [mm]	A [mm]	B [mm]	C [mm]	Nominal Weight [kg]	Price
MS4032	100 x 100	270	102	150	5.4	£119.62
MS6032	150 x 100	300	115	202	9.5	£219.78
MS6033	150 x 150	400	140	260	14.2	£245.40



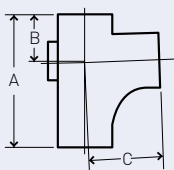
45° DOUBLE BRANCHES

Product Code	Diameter [mm]	A [mm]	B [mm]	C [mm]	Nominal Weight [kg]	Price
MS4036	100 x 100	260	190	190	5.7	£88.16
MS6036	150 x 100	280	225	225	6.5	£235.27



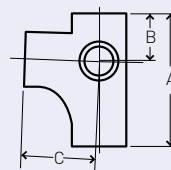
87.5° DOUBLE RADIUS CURVE BRANCHES

Product Code	Diameter [mm]	A [mm]	B [mm]	C [mm]	Nominal Weight [kg]	Price
MS4038	100 x 100	270	102	150	5.3	£88.16
MS6038	150 x 100	300	115	200	8.2	£235.27



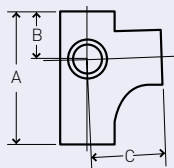
87.5° SINGLE RADIUS CURVE BRANCH WITH 2" BSPT BOSS ON BACK

Product Code	Diameter [mm]	A [mm]	B [mm]	C [mm]	Nominal Weight [kg]	Price
MS4039B	100 x 100	260	102	150	4.1	£96.10



87.5° SINGLE RADIUS CURVE BRANCH WITH 2" BSPT BOSS ON LEFT

Product Code	Diameter [mm]	A [mm]	B [mm]	C [mm]	Nominal Weight [kg]	Price
MS4039L	100 x 100	270	102	150	5.3	£96.10



87.5° SINGLE RADIUS CURVE BRANCH WITH 2" BSPT BOSS ON RIGHT

Product Code	Diameter [mm]	A [mm]	B [mm]	C [mm]	Nominal Weight [kg]	Price
MS4039R	100 x 100	260	190	190	5.7	£96.10

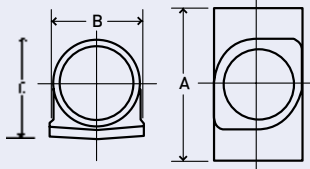


If you need any assistance of a technical nature, please feel free to give us a call.



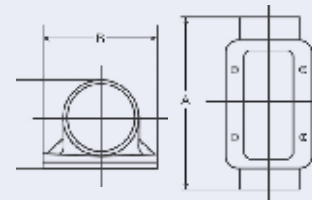
SITE SURVEYS

If you need us to visit a site, we're happy to oblige. We can assist with working out quantities required or any unusual requirements.



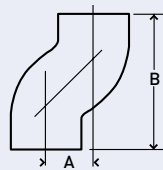
ACCESS PIPES WITH ROUND DOOR

Product Code	Diameter (mm)	A (mm)	B (mm)	C (mm)	Nominal Weight (kg)	Price
MS2043	50	170	80	76	15.7	£74.13
MS3043	70	205	98	92	2.5	£78.87
MS4043	100	250	118	130	4.3	£83.04
MS6043	150	280	172	180	7.9	£137.97



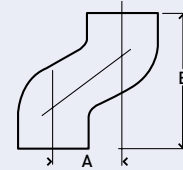
ACCESS PIPES WITH RECTANGULAR DOOR

Product Code	Diameter (mm)	A (mm)	B (mm)	C (mm)	Nominal Weight (kg)	Price
MS4049	100	320	160	129	8.0	£128.25
MS6049	150	395	215	184	13.5	£238.58



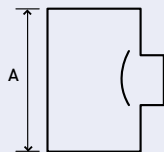
OFFSET 75MM PROJECTION

Product Code	Diameter (mm)	A (mm)	B (mm)	Nominal Weight (kg)	Price
MS4044	100	75	215	2.6	£48.21



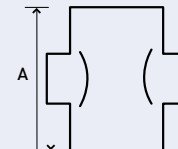
OFFSET 130MM PROJECTION

Product Code	Diameter (mm)	A (mm)	B (mm)	Nominal Weight (kg)	Price
MS2045	50	130	230	1.4	£47.96
MS3045	70	130	250	2.3	£61.92
MS4045	100	130	270	3.8	£67.33



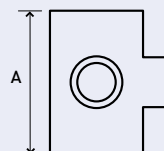
BOSS PIPES SINGLE 2" BSPT

Product Code	Diameter (mm)	A (mm)	Nominal Weight (kg)	Price
MS3053	70	148	1.6	£66.95
MS4053	100	155	2.1	£81.75
MS6053	150	175	3.6	£130.88



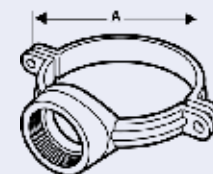
BOSS PIPES DOUBLE 2X2" BSPT OPPOSED

Product Code	Diameter (mm)	A (mm)	R (mm)	Nominal Weight (kg)	Price
MS4054	100	90	180	2.2	£105.66



BOSS PIPES DOUBLE 2X2" BSPT AT 90°

Product Code	Diameter (mm)	A (mm)	Nominal Weight (kg)	Price
MS4055	100	155	2.2	£92.68

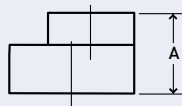


STRAP ON BOSS 2" BSPT

Product Code	Diameter (mm)	Nominal Weight (kg)	Price
MS4092	100	2.0	£68.03

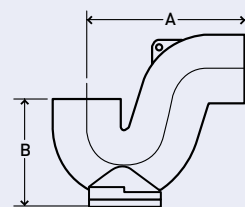


If you don't see a product within this brochure, we have the knowledge, experience and capability to manufacture bespoke castings and fabricated products to support our comprehensive standard ranges.



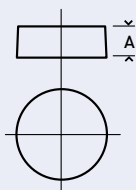
PIPE TAPERS

Product Code	Diameter [mm]	A [mm]	Nominal Weight [kg]	Price
MS3046	70 x 50	78	0.6	£42.93
MS4046	100 x 50	80	0.9	£53.26
MS4047	100 x 70	88	1.1	£53.26
MS6048	150 x 100	102	2.4	£104.05



P TRAPS WITH BOTTOM DOOR

Product Code	Diameter [mm]	A [mm]	B [mm]	Nominal Weight [kg]	Price
MS2050	50	160	115	2.3	£110.16
MS3050	70	200	140	3.6	£110.16
MS4050	100	255	175	6.8	£122.14
MS6050	150	350	245	15.8	£213.50



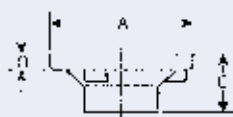
BLANK ENDS

Product Code	Diameter [mm]	A [mm]	Nominal Weight [kg]	Price
MS2051	50	30	0.2	£11.32
MS3051	70	35	0.4	£12.45
MS4051	100	40	0.8	£13.91
MS6051	150	50	1.6	£20.06



BLANK ENDS DRILLED & TAPPED 2"

Product Code	Diameter [mm]	A [mm]	Nominal Weight [kg]	Price
MS4052	100	40	0.7	£30.19
MS6052	150	50	1.5	£36.94



BELLMOUTH GULLY INLET

Product Code	Diameter [mm]	A [mm]	B [mm]	C [mm]	Nominal Weight [kg]	Price
MS4070	100	215	25	85	2.9	£71.60



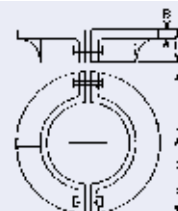
SOLID COVER WITH RUBBER SEAL & SCREWS

Product Code	Diameter [mm]	Nominal Weight [kg]	Price
MS8076	200	2.2	£30.73



PLAIN GRATING TO SUIT MS4070

Product Code	Diameter [mm]	Nominal Weight [kg]	Price
MS8077	200	1.8	£15.29



BOLT ON PUDDLE FLANGE

Product Code	Diameter [mm]	A [mm]	B [mm]	C [mm]	Nominal Weight [kg]	Price
MS4078	100	220	12	50	4.0	£83.79

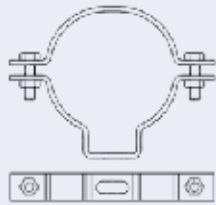


If you need any assistance of a technical nature, please feel free to give us a call.



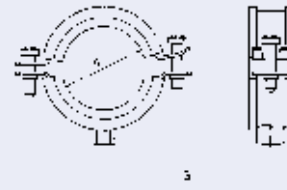
SITE SURVEYS

If you need us to visit a site, we're happy to oblige. We can assist with working out quantities required or any unusual requirements.



COATED ADJUSTABLE BRACKETS

Product Code	Diameter (mm)	Nominal Weight (kg)	Price
MS2067	50	0.3	£13.30
MS3067	70	0.3	£13.30
MS4067	100	0.6	£15.03
MS6067	150	0.8	£27.44



ZINC PLATED RUBBER LINED BISMAT BRACKETS

Product Code	Diameter (mm)	G	Price
HS2061	50	M8/M10	£4.90
HS3061	70	M8/M10	£6.66
HS4061	100	M8/M10	£9.48
HS6061	150	M10	£18.51
HS8061	200	M10	£27.60



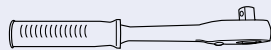
ZINC PLATED HEAVY DUTY BOSSSED BRACKETS

Product Code	Diameter (mm)	G	Price
HS2063	50	M8/M10	£8.82
HS3063	70	M10/M12	£9.47
HS4063	100	M10/M12	£12.61
HS6063	150	M10/M12	£22.07



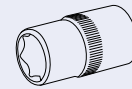
ZINC PLATED RUBBER LINED HEAVY DUTY BOSSSED BRACKETS

Product Code	Diameter (mm)	G	Price
HS2064	50	M8/M10	£9.47
HS3064	70	M10/M12	£11.58
HS4064	100	M10/M12	£16.80
HS6064	150	M10/M12	£30.86



RATCHET SPANNER

Product Code	Price
HSD001	£88.18



SOCKET (FOR ACCESS DOOR BOLTS)

Product Code	Diameter (mm)	Price
HSD002	13.0	£15.78



ALLEN SOCKET ADAPTERS (FOR COUPLINGS)

Product Code	Diameter (mm)	Price
HSD003	6.0	£21.68



If you don't see a product within this brochure, we have the knowledge, experience and capability to manufacture bespoke castings and fabricated products to support our comprehensive standard ranges.