

April 2025

# LIFELINES

The monthly newsletter of Lord of Life Lutheran Church

5601 Washington Rd. • Kenosha, WI 53144

E-mail Address: [office@lordoflifekenosha.org](mailto:office@lordoflifekenosha.org)

Phone: (262) 656-1995

Dear Church Family,

Grace and peace to you in the name of our risen Savior, Jesus Christ!

April brings with it the beauty of spring, the promise of new life, and the most glorious celebration in the Christian faith—Easter. As we journey through this season, we are reminded that the resurrection of Jesus is not just an event in history but the very foundation of our faith and the source of our eternal hope.

The empty tomb declares the victory of Christ over sin and death. Because He lives, we too have the assurance of life everlasting. This truth transforms our daily lives, calling us to walk in the power of His resurrection. In a world filled with uncertainty, Easter reminds us that hope is not lost, for Christ is alive!

As we prepare our hearts for Easter Sunday, let us take time to reflect on the sacrifice Jesus made for us. Let us remember the deep love of God, who sent His Son so that we might be reconciled to Him. Let us also rejoice and proclaim the good news that Jesus is risen!

I encourage you to invite friends and family to join us for our Easter services. May our worship, fellowship, and celebration be a testimony to the world of the life-changing power of the resurrection.

May this Easter season renew your faith, fill your heart with joy, and draw you closer to the Savior.

With Resurrection Joy,

*Pastor Chip*

## PALM SUNDAY



Sat. April 12 | 5:00 p.m.

Sun. April 13 | 9:00 a.m.

First Communion Class at 10:15 a.m.

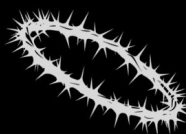
## MAUNDY THURSDAY



April 17 | 6:30 p.m.

Celebration of First Communion

## GOOD FRIDAY



April 18

Noon: Community Worship at Trinity Lutheran Church; 7104 39th Ave.

6:30 p.m. Worship at Lord of Life

## EASTER

April 20

8:00 a.m. Worship

9:00 a.m. Easter Breakfast

10:00 a.m. Worship

11:00 a.m. Kid's Easter Egg Hunt

### SERVING YOU AT LORD OF LIFE

**Rev. Chip Lutz**

- Pastor

**Angie Wollschlager**

- Church Administrator

**Connie Wittmus**

- Admin. Assistant

**Sue Quever**

- Parish Nurse

**Claudia Murillo**

- Bookkeeper

**Kerry Bieneman**

- Music Director

**Gary Dennison**

- Contemp. Music Lead

**Nancy Cerninara**

- Custodian

### Church Council

**Russ Brewer**

- President

**Matt Ley**

- Vice President

**Ralph McCarthy**

- Treasurer

**Lori Vogel**

- Secretary

**Tanya Brady**

**Julie Chase**

**Lynn Kancian**

- Members-at-large

### Office Hours

Monday - Wednesday  
10:00 a.m.—12:00 p.m.



Like Us On  
**facebook**

[www.facebook.com/LordofLifeKenosha](http://www.facebook.com/LordofLifeKenosha)

*We are led by love and inspired by grace to serve.*



## The Season of Lent

### Wednesday Evenings

March 12 through April 9, 2025

5:30 p.m. Soup Supper

6:15 p.m. Worship

Both in Fellowship Hall



### OUTREACH OPPORTUNITIES



PB&J at the ELCA

Outreach Center

**Fridays at 11:30 a.m.**

6218 26th Avenue

Join us to serve pizza & a short Bible study



We will not be serving the Community Meal in the month of April. Our next date is Sunday, May 11th.



**Help us decorate for Easter on Saturday, April 19th at 9:15 a.m.**

## Communion Instruction

### Class Date

Sunday, April 13, 10:15—11:15 a.m.  
(Palm Sunday)

### Celebration of First Communion

Maundy Thursday Worship, April 17, 6:30 p.m.

We'll share this time together learning about Communion and what it means. This class offered to children beginning in 4th grade, to younger children whose parents feel their child is ready to receive the gifts of communion, or to older children who may have never attended the class. At least one parent must attend the class with their child.

**Please contact the church office to register:**  
(262) 656-1995 or [office@lordoflifekenosha.org](mailto:office@lordoflifekenosha.org)



**Saturday, April 19  
at 8:00 a.m.**



**Thursday, April 24  
at 6:00 p.m.**



We will be holding a bake sale fundraiser on Easter Sunday, with funds going towards our mortgage reduction efforts. Plan to pick up a scrumptious rum or apple cake, apple caramel muffins, or many other items that will be available to choose from for your Easter gathering.



## Easter Flower Orders

**Celebrate the resurrection of our Lord by sponsoring flowers for our Easter altar.**

Lilies & Daffodils are \$20 each  
Tulips & Hyacinths are \$16 each

The dedication that you provide will be printed in the Easter bulletin.

Please use the special envelope, enclose the donation, and return it to the offering plate or the church office.

If you'd like to pay electronically, visit our website: [www.lordoflifekenosha.org](http://www.lordoflifekenosha.org), click DONATE, and you'll see the Easter Flowers option.

**Orders are due by Sunday, April 6th.**

*Please* take your plants home any time after Easter worship.

If you are willing to bake anything to donate to the sale, or man the table after worship, please [CLICK HERE](#) to sign up. Cash and cards will be accepted.

## Holy Humor Weekend

**SATURDAY, APRIL 26**

**5:00 P.M. WORSHIP**

**FOLLOWED BY A PIZZA PARTY**

**SUNDAY, APRIL 27**

**9:00 A.M. WORSHIP**

**FOLLOWED BY A**

**POTLUCK BRUNCH**





**Help us slash  
some of our debt!**



**MORTGAGE**

PLEASE SUPPORT OUR **FUNDRAISER!**



Kitchen Must-Haves, Scrumptious Food Mixes, Cookbooks & So Much More!

Support Lord of Life while shopping from a great selection of products for yourself, or for gifts: Mother's Day, Father's Day, wedding showers, housewarming, etc.!



Shop online [HERE](https://www.radafundraising.com) or visit [www.radafundraising.com](https://www.radafundraising.com) and search using Lord of Life and Kenosha to ensure we get credit.

Printed catalogs are also available and we can help you place an order.

**Orders over \$35 get \$5 off shipping with the code SHIPDEAL at checkout.**

**Share the info with everyone you know! All proceeds will be used for extra principal payments on our mortgage.**

### Congregational Council Nominations

Nominations are being sought for our Congregational Council, which will be elected during our Annual Congregational Meeting on Sunday, June 29th. There are two positions to be filled. We ask all of our members to prayerfully consider serving Lord of Life in this capacity for a three year term. If you have any questions, feel free to talk to Pastor Chip, Angie or Connie from the church office, or a member of the Nominating Team: Julie Chase (outgoing council member), Amanda Ley, and Ed Brady. **Additional information and the nomination form can be found [HERE](#).** There are paper copies available on the Welcome Center in the narthex, or from the church office.



### Be part of the discussion:

**"What is God calling Lord of Life to do in this place at this time?"**

The church we grew up in is not the church we have now. How can we use the assets God has entrusted to our congregation to make the most positive impact in our community while staying true to our mission?

Join Amanda Ley & Tanya Brady as we further explore the book *Funding Forward: A Pathway to More Sustainable Models for Ministry* by Grace Duddy Pomroy. Book available on Amazon for \$21.49.

**We meet on Monday evenings at 6:30 p.m.** Join us for discussion as we continue to brainstorm our assets and identify what God is calling Lord of Life to do. Our goal is to live more deeply into what God is calling our congregation to do and be, which will strengthen the sustainability of our congregation.

Feel free to jump into conversation each week as time allows. If you can't make a week, it's ok. We'd love to have more brain power in our brainstorm. All are welcome anytime.

## FEBRUARY 2025 FINANCIALS

#### Funds on Hand

Cash on Hand - General Fund		\$36,547.71
Savings Acct - Temp Reg Cash	\$ 26,759.58	
Savings Acct - Restricted	\$ 41,183.18	
Total Savings Acct	\$ 67,942.76	

#### Restricted Accounts

MEMORIAL FUND	\$ 7,988.35
PASTOR'S DISCRETIONARY	\$ 602.79
WOMEN'S TEA	\$ 805.05
WOMEN'S FELLOWSHIP	\$ 552.85
YOUTH FUND	\$ 8,260.59
KINGFISH GAME	\$ (50.00)
HIGH FIVERS	\$ 169.01
RESTRICTED GIVING 23-25	\$ 20,000.00
COLLECTIONS FOR OTHERS	\$ 871.93
FOOD OUTREACH	\$ 1,982.61
Total Restricted Funds	\$ 41,183.18

Scrip Account	\$8,427.88
Scrip Card Inventory	\$16,835.00

#### LIABILITIES

Credit Card Balance	\$ 3,215.53
Payroll Withholdings	\$ -
Mortgage Balance	\$1,028,225.82
Total Liabilities	\$ 1,031,441.35

#### YTD Income - YTD Expenses

YTD Income	\$ 71,617.05
YTD Expenses	\$ 64,954.12
YTD Revenue	\$ 6,662.93

MEMBERS GIVING YTD  
\$8,198.76 OVER BUDGET

TOTAL EXPENSES YTD  
\$1,188.70 OVER BUDGET

ELCA Benevolence Paid \$1,666.66

For a more detailed financial report including line by line income and expenses please contact the Church Treasurer, Claudia Murillo, at [treasurer@lordoflifekenosha.org](mailto:treasurer@lordoflifekenosha.org). Thank you!





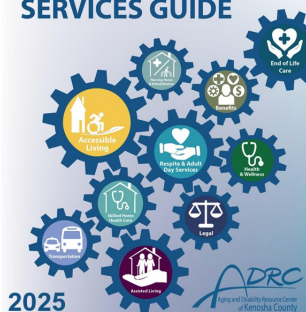
Dear friends,

Caregiving can be stressful as well as rewarding. You might wonder if you are really a caregiver? Do you monitor someone's medical condition? Do you buy and organize medication for others? Do you talk with health care providers on behalf of a person? Do you provide hygiene and basic care assistance? Do you shop, cook, or provide meal management in any way? Are you managing a person's finances or making sure a household is up and running? If you said yes to any of the above...congratulations, you are a caregiver!



So now that you have established your caregiving status, let me ask you a few more questions. Do you feel overwhelmed or constantly worried or tired all the time? Do you feel like you need more sleep, or are you getting too much sleep? Do you become easily irritated or angry? Are you losing interest in activities you used to enjoy? Are you feeling sad? Have you been having frequent headaches, bodily pain or other physical problems? Do you find yourself abusing alcohol or drugs, including prescription medications? If you answered yes to any of these questions you might be suffering from caregiver stress.

#### Kenosha County ADRC COMMUNITY SERVICES GUIDE



The Department of Aging and Disability in Kenosha can be a great resource for caregivers. They have an online resource book that directs you to available resources in the community: [2025 Community Service Directory](#). There is a family caregiver support group that you can join that meets the 1<sup>st</sup> Thursday of the month from 4-5 p.m. either virtual or in person, facilitated by Margaret Ricchio, Caregiver Support Specialist...call 262-605-6646 to learn more. Also, there are caregiver classes offered throughout the year for those interested in learning more about caregiving. A person can register for the "Powerful Tools for Caregivers", a six-week, workshop, that is a self-care education program for family caregivers. PTC provides self-care tools and strategies to better handle the unique challenges caregivers face. Subjects include reducing personal stress, changing negative self-talk, communicating effectively in challenging situations, recognizing emotions and difficult feelings, and making tough caregiving decisions. Class size is limited, and registration is required. The deadline for registering is Thursday May 1. The class runs Thursdays, May 5th - June 12th, 2 to 3:30 p.m. Call 262-605-6646.

Truealta is a community of experts and caregivers who offer practical guidance, empathy, and encouragement. A wonderful support system for caregivers. You can join for free at the following website: [Register - Wisconsin Family and Caregiver Support Alliance](#)

*From the Sisters of Providence of Saint Mary of the Woods: Let us pray,*

Dear Father, I need to remember that I am called upon to only do what I can. As I care for my loved one, grace me with the trust to rely on you as each day unfolds. Give me the strength to be strong in those times when my loved one becomes weaker and needs increase care. Give me clarity of vision for him/her as their own ability to think clearly eludes them. When my own vision is clouded by fatigue and frustration, give me respite moments so I will regain new energy to provide the care needed. Amen.

Shalom,  
Nurse Sue, R.N., F.C.N.  
Aurora Faith and Health Team



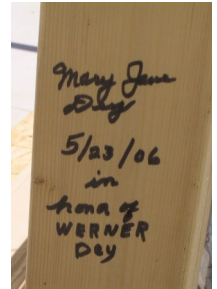
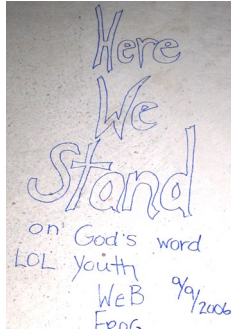
Please also notify us if you notice your anniversary or birthday is not appearing in the newsletter.



# CELEBRATING 40 YEARS

## 2025 brings the 40th anniversary of Lord of Life!

We're working on a celebration to commemorate this milestone, to be held on **Sunday, May 18th.**



In the fall of 2006 we held a "stud signing celebration". Under the drywall are messages and prayers we wrote on the studs and on the concrete floors.

Werner Day was the Lord of Life member who crafted the beautiful cross that hangs behind the altar. Below is when it was being moved from the old sanctuary to the new.



The sanctuary coming together nicely. That's a lot of drywall!

### April 1, 2007 (Palm Sunday)

One final prayer was held in the now empty original sanctuary, then we processed into the new sanctuary, waving our palms, for our first worship service in the new sanctuary.



<b>SATURDAY VOLUNTEERS</b> ( <u>No Saturday service on April 19</u> )		
<b>April 5</b>	<b>April 12</b>	<b>April 26</b>
<b>Usher/Greeter</b>		
Steve & Patsy Kolner	<b>OPEN</b>	<b>OPEN</b>
<b>Lesson Reader</b>		
<b>OPEN</b>	<b>OPEN</b>	Chris Daugherty
<b>Communion Wine Servers</b>		
<b>OPEN</b>	<b>OPEN</b>	Chris Daugherty
<b>Altar Care</b>		
<b>OPEN</b>	<b>OPEN</b>	<b>OPEN</b>
<b>SCRIP sales</b>		
<b>OPEN</b>	<b>OPEN</b>	<b>OPEN</b>
<b>A/V</b>		
<b>OPEN</b>	<b>OPEN</b>	Jonah Sens

<b>SUNDAY VOLUNTEERS</b> ( <u>See following page for Easter schedule</u> )		
<b>April 6</b>	<b>April 13</b>	<b>April 27</b>
<b>Usher/Greeter</b>		
Norma & Cliff Lundstrom	Russ & Becky Brewer	<b>OPEN</b>
<b>Lesson Reader</b>		
Maddie Cooper	John Meyer	<b>OPEN</b>
<b>Communion Wine (2)/Bread Servers</b>		
Kathy Miller (wine) Pam Leonard (wine) Maddie Cooper (bread)	Norma & Cliff Lundstrom, Beth Files (bread)	<b>OPEN</b>
<b>Altar Care</b>		
Kathy Miller	Kim Sly & Gary Kovacs	<b>OPEN</b>
<b>Coffee Hour Host</b>		
<b>OPEN</b>	Beth Files	<b>OPEN</b>
<b>SCRIP sales</b>		
Pam Leonard	Jean Garretto	<b>OPEN</b>
<b>Communion Bread</b>		
Kathy Miller	<b>OPEN</b>	Kathy Miller
<b>A/V</b>		
TBD	TBD	TBD
<b>Sunday School</b>		
Ashlie & Donald Hurlbut	Pam Leonard, Becky Brewer	Brianna Daugherty



HOLY WEEK VOLUNTEERS			
Maundy Thursday 6:30 p.m.	Good Friday 6:30 p.m.	Easter 8:00 a.m.	Easter 10:00 a.m.
Usher/Greeter			
OPEN	OPEN	Kim Sly & Gary Kovacs	OPEN
Lesson Reader			
OPEN		Chris Daugherty	Beth Files
Communion Wine Servers			
OPEN	Not Needed	Kathy Miller, Chris Daugherty, John Meyer (bread)	Pam Leonard, 1 needed John Meyer (bread)
Altar Care			
OPEN	Not Needed	Kathy Miller	OPEN
Communion Bread			
OPEN	Not Needed	Kathy Miller	Beth Files
A/V			
Angie W	Angie W	TBD	TBD

To sign up to volunteer visit <https://lordoflifekenosha.org/serve>



# LOL CALENDAR OF EVENTS



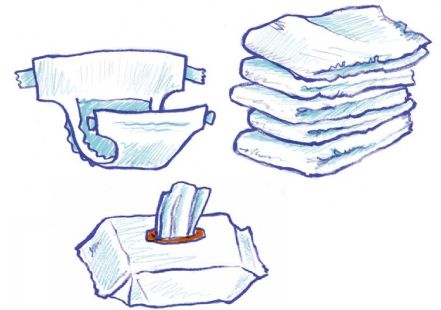
SUNDAY	MONDAY	TUESDAY	WEDNESDAY	THURSDAY	FRIDAY	SATURDAY
		<b>1</b> 9:30 a.m.— 3:30 p.m. Our Harmony Club	<b>2</b> 12:00 p.m. Ladies of Lydia 5:30 p.m. Soup Supper 6:15 p.m. Worship	<b>3</b> 7:00 p.m. AA	<b>4</b> 11:30 a.m. Peanut Butter & Jesus @ Outreach Center	<b>5</b> 5:00 p.m. Contemporary Worship
<b>6 Easter Flower Deadline</b> 9:00 a.m. Worship & Sunday School 10:00 a.m. Coffee Fellowship 10:15 a.m. Adult Ed	<b>7</b> 6:00 p.m. Confirmation	<b>8</b> 7:00 p.m. Council meeting	<b>9</b> 12:00 p.m. Ladies of Lydia 5:30 p.m. Soup Supper 6:15 p.m. Worship	<b>10</b> 7:00 p.m. AA	<b>11</b> 11:30 a.m. Peanut Butter & Jesus @ Outreach Center	<b>12</b> 5:00 p.m. Contemporary Worship
<b>13 Palm Sunday</b> 9:00 a.m. Worship & Sunday School 10:00 a.m. Coffee Fellowship 10:15 a.m. First Communion Class	<b>14</b> 6:00 p.m. Confirmation	<b>15</b> 9:30 a.m.— 3:30 p.m. Our Harmony Club	<b>16</b> 12:00 p.m. Ladies of Lydia	<b>17</b> 6:30 p.m. Maudy Thursday Worship 7:00 p.m. AA	<b>18</b> 12:00 p.m. Community Worship at Trinity LC 6:30 p.m. Good Friday Worship	<b>19</b> 8:00 a.m. Men's Bagels & Bibles 9:15 a.m. Decorate for Easter <b><u>NO WORSHIP</u></b>
<b>20 Easter Sunday</b> 8:00 a.m. Worship 9:00 a.m. Easter Breakfast 10:00 a.m. Worship 11:00 a.m. Kid's Easter Egg Hunt <b>BAKE SALE</b>	<b>21</b>	<b>22</b>	<b>23</b> 12:00 p.m. Ladies of Lydia	<b>24</b> 6:00 p.m. Trivia Night 7:00 p.m. AA	<b>25</b> 11:30 a.m. Peanut Butter & Jesus @ Outreach Center	<b>26 Holy Humor</b> 5:00 p.m. Contemporary Worship 6:00 p.m. Pizza party
<b>27 Holy Humor</b> 9:00 a.m. Worship & Sunday School 10:00 a.m. Coffee Fellowship 10:15 a.m. Potluck Brunch	<b>28</b> 6:00 p.m. Confirmation	<b>29</b>	<b>30</b> 12:00 p.m. Ladies of Lydia			



# MINISTRY OF THE MONTH

This month we will be collecting diapers and wipes for the ELCA Outreach Center.

Diaper sizes 5, 6 & 7 are the most needed. Any size packages of wipes are welcome!



**DIAPER  
DRIVE**



[www.facebook.com/LordofLifeKenosha](http://www.facebook.com/LordofLifeKenosha)



**Evangelical Lutheran  
Church in America**  
God's work. Our hands.