



// 2024

Die and mold industry solutions



GANZHOU ACHTECK TOOL TECHNOLOGY CO.,LTD.

Add: Ganzhou Economic Development Area, Jiangxi, China
Tel: 400-9150-887 Fax: 0086-797-8166100 E-mail: marketing@achtecktool.com

ACHTECK AMERICA, INC.

Add: 1928 Star Batt Drive, Ste C, Rochester Hills, MI 48309
Tel: +1(947)208-7289 E-mail: zyaacs@achtecktool.com Website: www.achteckamerica.com

2024V01



www.achteckamerica.com



Company Profile

Ganzhou Achteck Tool Technology Co., Ltd. is a wholly-owned subsidiary of Chongyi Zhangyuan Tungsten Co., Ltd. (Listed Company with stock code 002378). The registered capital of Achteck is 1.66 billion USD with 800 employees. The main products include: Coated Carbide Inserts, Carbide Rod and supporting tool holders. Achteck is known for its outstanding R&D competence, production & testing equipment and its coated carbide insert production technology.

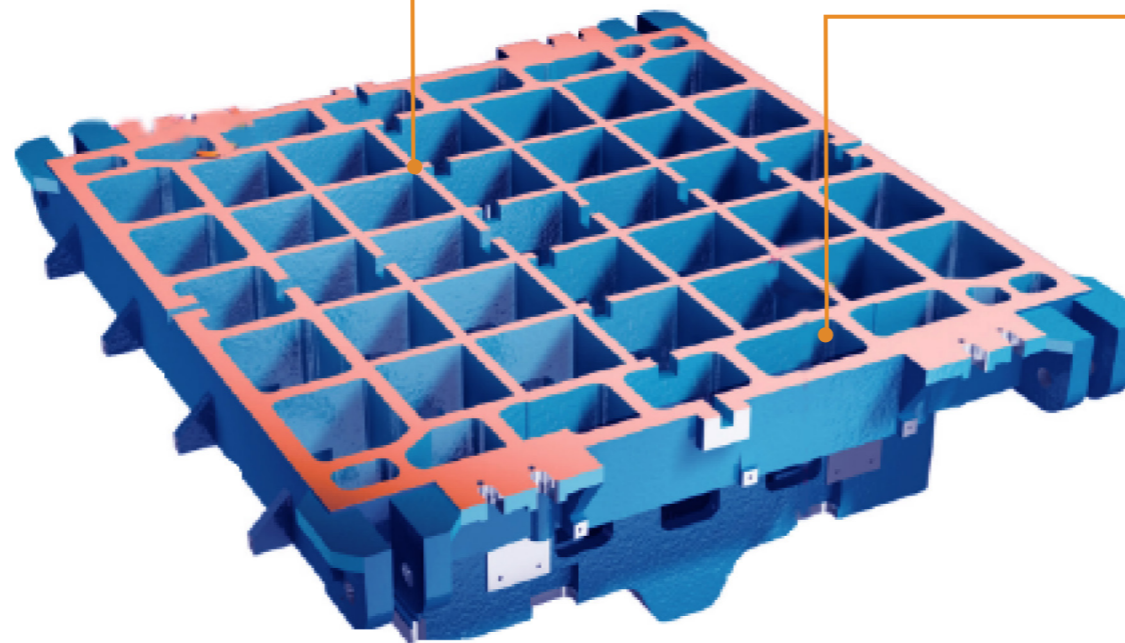
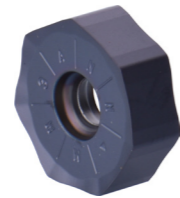
Achteck produces inserts for Turning, Grooving, Milling and Drilling that are widely applied in automotive, energy, die & mold, general machinery, aerospace and other industries. Achteck Tool is technology oriented, owns a strong research team that keeps on innovating. Having "Benefits from Resources, Reliance on Technologies, Devotion to Humanity and Top with Trust" as the operating philosophy and "Safety, Harmony, Efficiency and Innovation" as the target, Achteck aims to become a well-known brand in the world and a first-class cemented carbide manufacturer in China.



Contents:

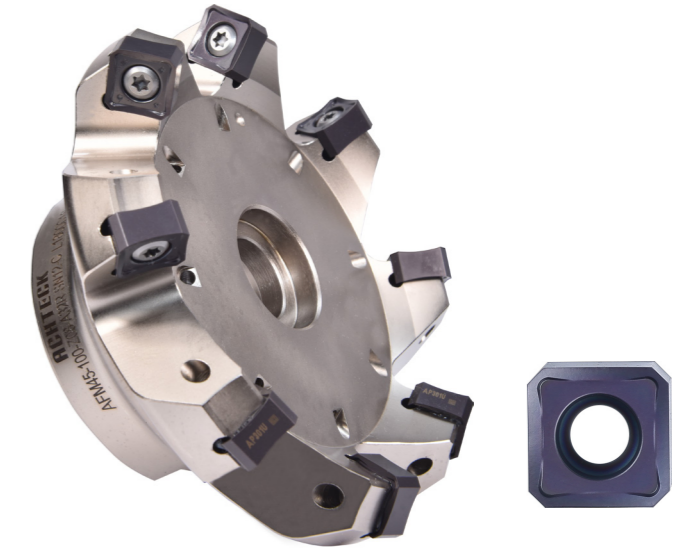
Stamping die and mold: Die frame machining	1-2
Stamping die and mold: Automotive chassis	3-6
Stamping die and mold: Automotive door die/mold machining	7-12
Injection die and mold: Automotive surround machining	13-16
Blow mold-glass mold	17-18

- Stamping die and mold: Die frame machining
Material: Die and mold steel



Application: Die face milling
Solution: Achteck XN07 /09 face milling cutter

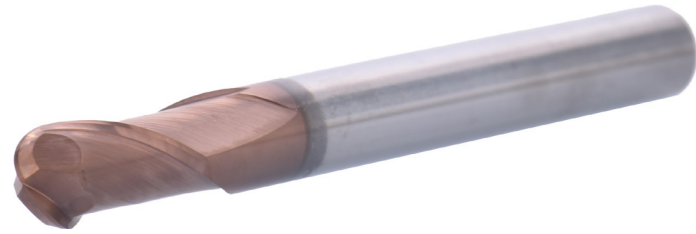
➤With XN07 /09...ANN short wiper edge insert



Application: Die face milling
Solution: Achteck AFM45/75/88-SN12/19 face milling series

- Different approach angles available with all kinds of geometries, high versatility, suitable for all face milling
- Negative insert with 8 cutting edges is economical and practical
- Short wiper edge ensures the surface finish of the workpiece

- Stamping die and mold: Automotive chassis
Material: Die and mold steel



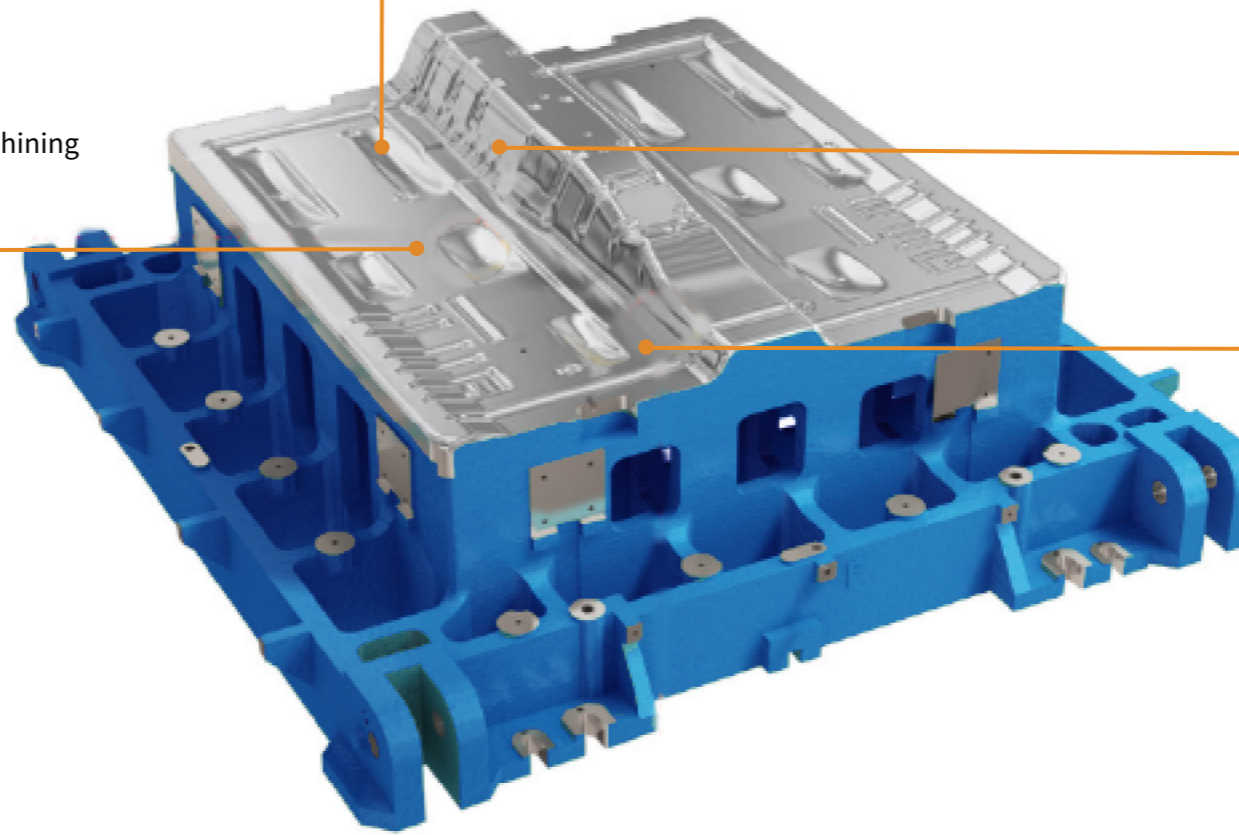
Application: Face and profile semi-finish and finish milling
Solution: Achteck M170 end mill series

- Negative rake angle design
- Large spiral angle
- Special substrate and coating for hard material machining



Application: Rough machining on arc surface
Solution: Achteck profile milling cutter APM00-RO08/10...

Round insert with multiple anti-rotation slots to securely clamp the insert



Application: Profile finish milling
Solution: Achteck ABMM-FBM ball nose finish milling series

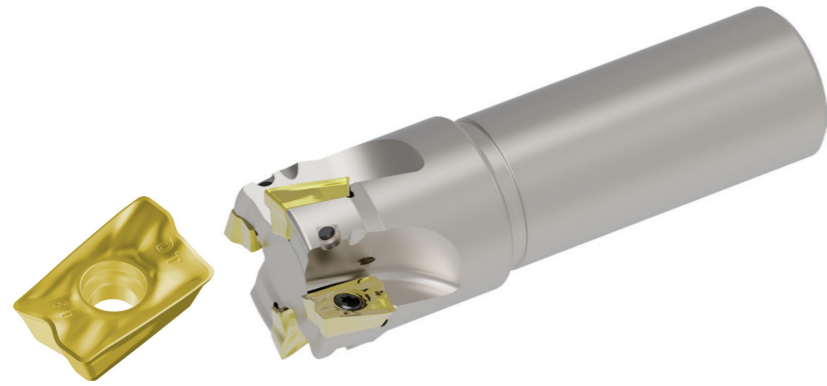
- Strong cutting edge
- The S-shaped cutting edge effectively reduces the vibration during machining and improves the surface finish
- Special grade for difficult-to-machine materials



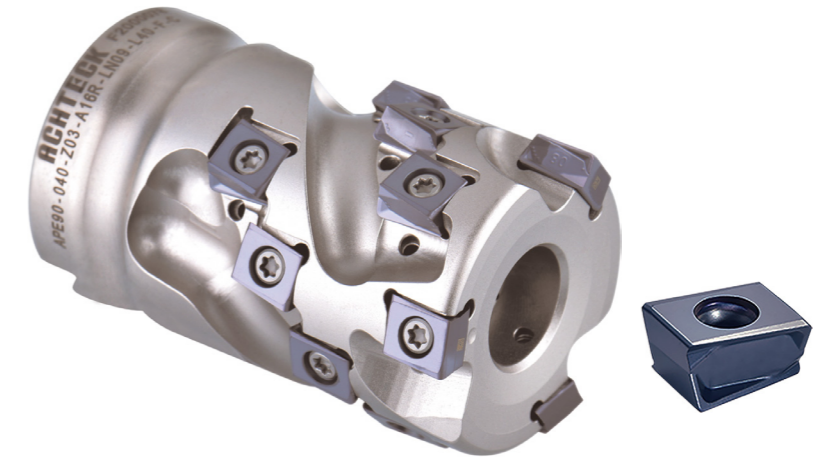
Application: Roughing and semi-finishing transition round corner
Solution: Achteck profile milling tool APM00-RPM08/10...

- Anti-rotation slot at the bottom of the insert to avoid overcut or undercut
- Universal geometry and spiral edge design for low cutting force
- Peripheral and central edge available for each insert

- Stamping die and mold: Automotive chassis
Material: Die and mold steel

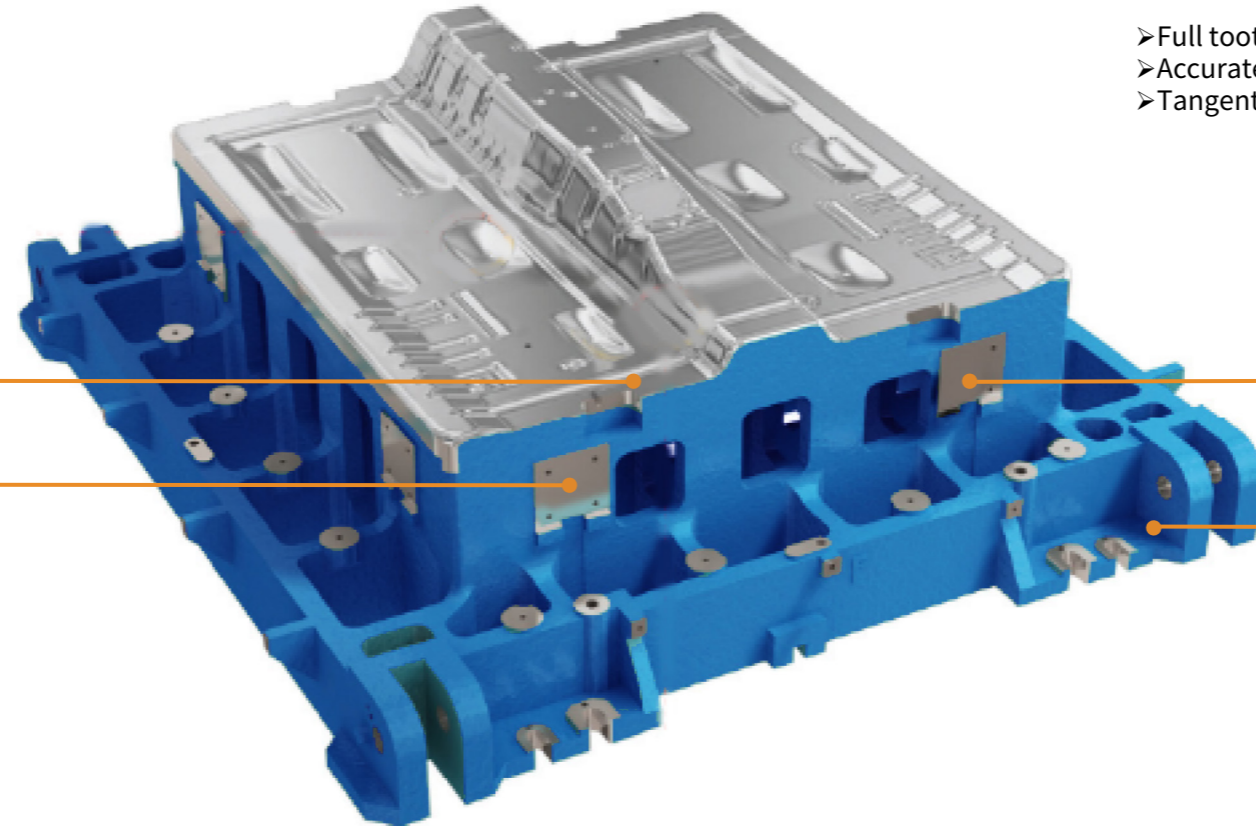


Application: Peripheral contour shoulder milling
Solution: APKT 17 shoulder milling tool series
➤Versatile grade for common materials and special grade for difficult-to-machine materials



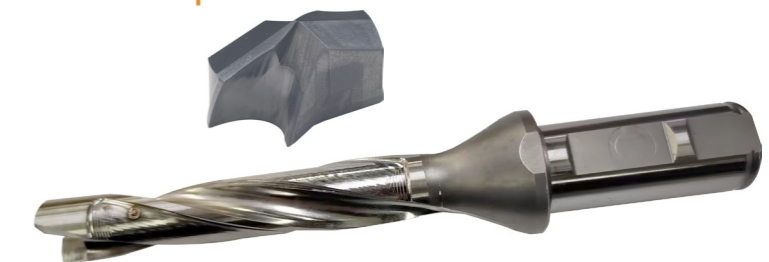
Application: Side boss shoulder milling
Solution: Achteck porcupine milling cutter APE90-LN09/LN13

- Full tooth porcupine milling cutter
- Accurate internal cooling for each insert
- Tangential insert design provides high cutting strength and high safety



Application: Drilling on boss surface
Solution: D106 carbide drill with internal coolant

- High versatility and wear resistance
- Versatile grade is suitable for P, M, K, N, S, H, O
- Option: 3xDc, 5xDc



Application: Drilling
Solution: Achteck D190 modular drill

- Various geometries are suitable for P, M, K, S, H
- For 1xD to 10xD drilling
- The drill body has double internal cooling holes to optimize the cooling and chip removal

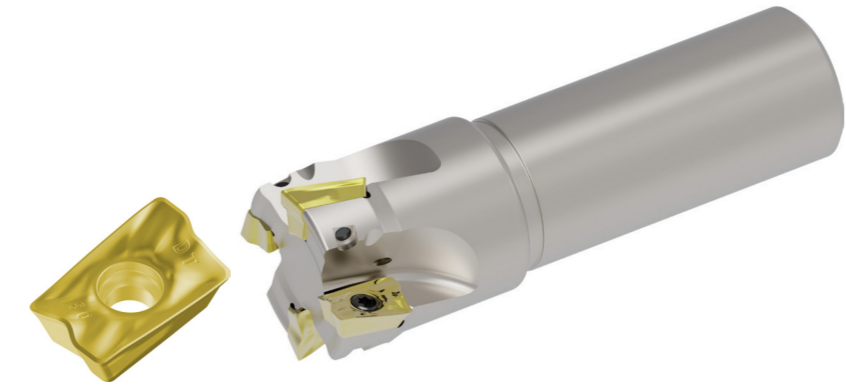
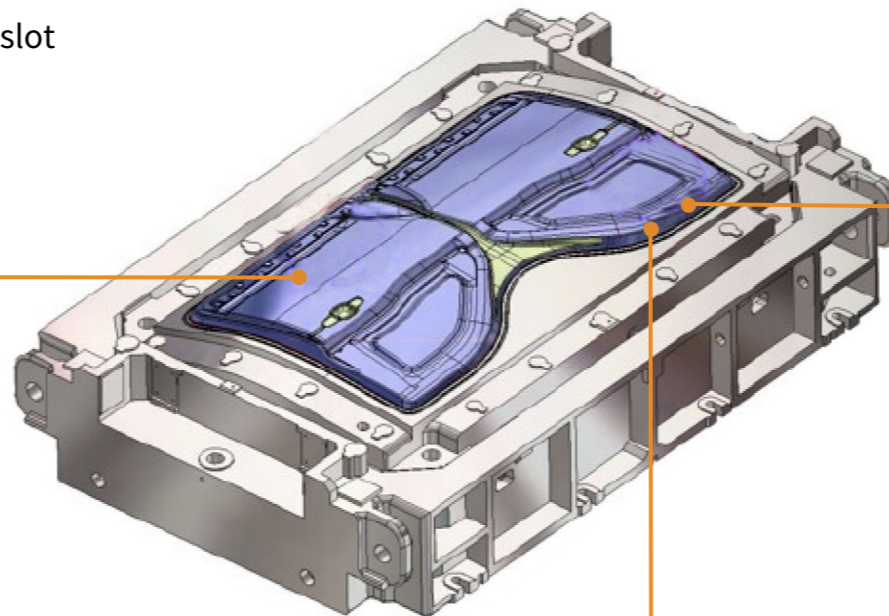
- Stamping die and mold:
Automotive door die/mold machining
Material: Die and mold steel



Anti-rotation slot

Application: 5 axis general profile milling
Solution: Achteck high feed milling cutter APM00-RO10/12/16

➤ Round insert with multiple anti-rotation slots to securely clamp the insert



Application: Peripheral contour rough shoulder milling
Solution: Achteck APKT17 shoulder milling cutter series

➤ Versatile grade for common materials and special grade for difficult-to-machine materials



Application: Semi-finishing transition round corners
Solution: Achteck profile milling cutter APM00-RPM08/10...

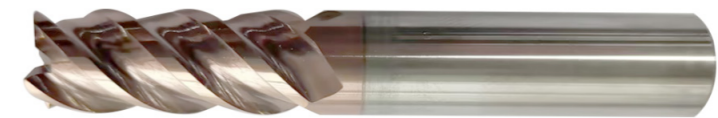
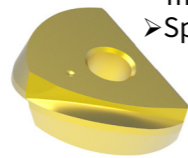
➤ Anti-rotation slot at the bottom of the insert to avoid overcut or undercut
➤ Universal geometry and spiral edge design for low cutting force
➤ Peripheral and central edge available for each insert

- Stamping die and mold:
Automotive door die/mold machining
Material: Die and mold steel



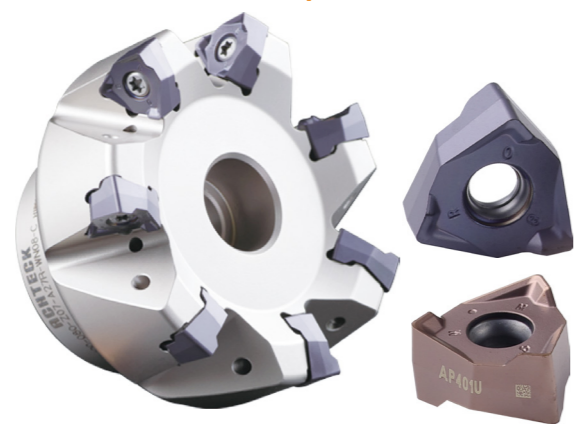
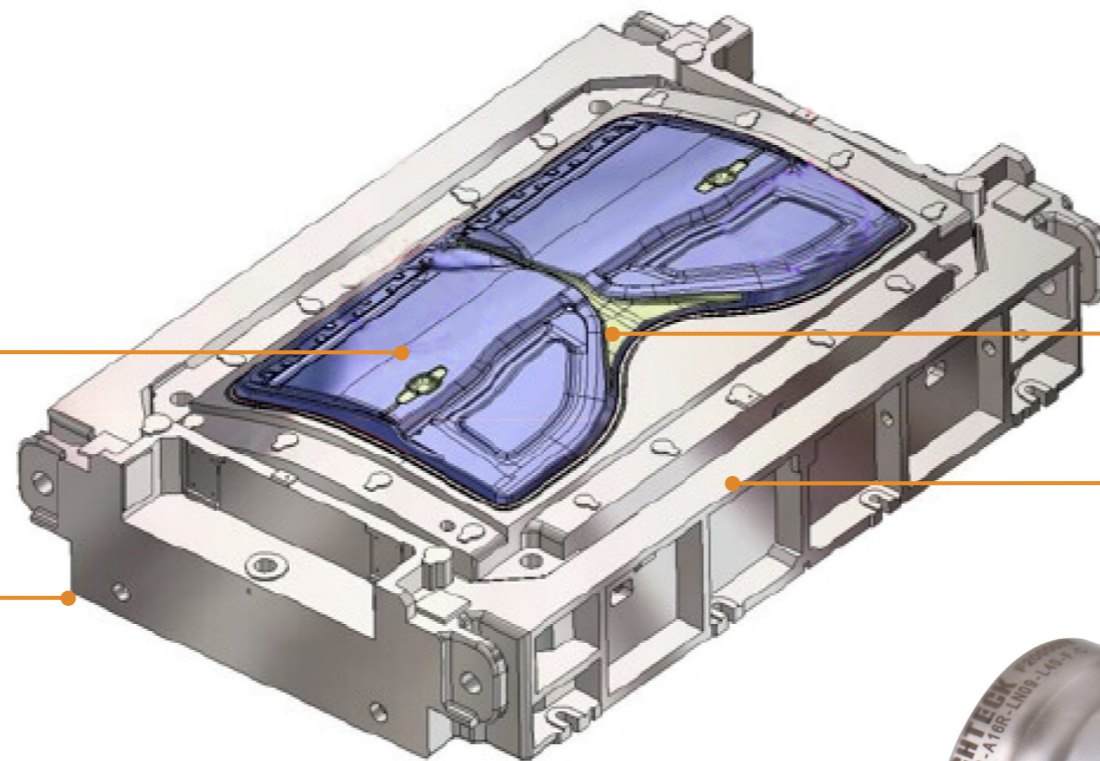
Application: Profile finish milling
Solution: Achteck ABMM-FBM ball nose finish milling series

- Strong cutting edge
- The S-shaped cutting edge effectively reduces the vibration during machining and improves the surface finish
- Special grade for difficult-to-machine materials



Application: Face and side milling. Semi-finish and finish milling
Solution: Achteck M170 series end mills

- Negative rake angle design
- Large spiral angle
- Special substrate and coating for hard material machining



Application: Boss shoulder milling
Solution: Achteck ASM90-WN08 series

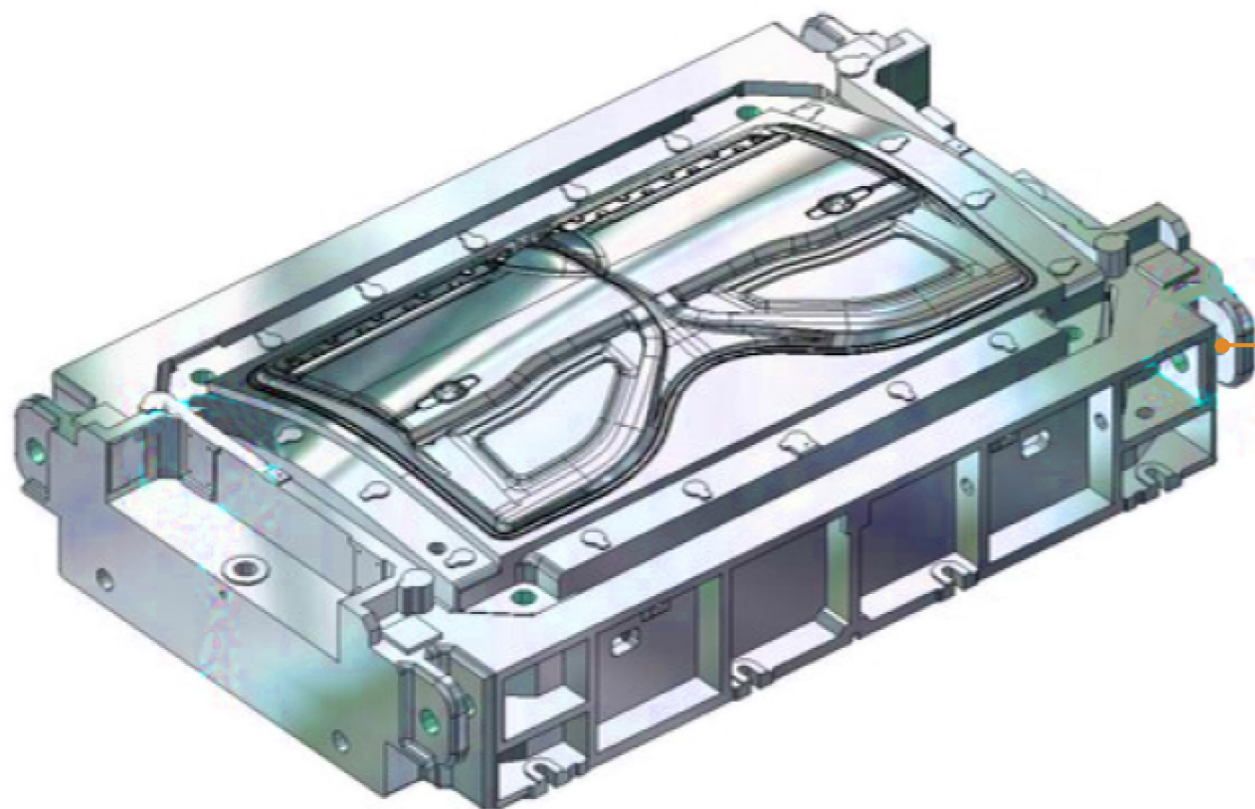
- Positive rake angle insert for light cutting
- Negative insert with 6 cutting edges, strong geometry with large rake angle
- Wiper edge insert for good surface finish



Application: Side boss shoulder milling
Solution: Achteck porcupine milling cutter APE90-LN09/LN13

- Full-tooth porcupine milling cutter
- Accurate internal cooling for each insert
- Tangential insert design provides high cutting strength and high safety

- Stamping die and mold:
Automotive door die/mold machining
Material: Die and mold steel

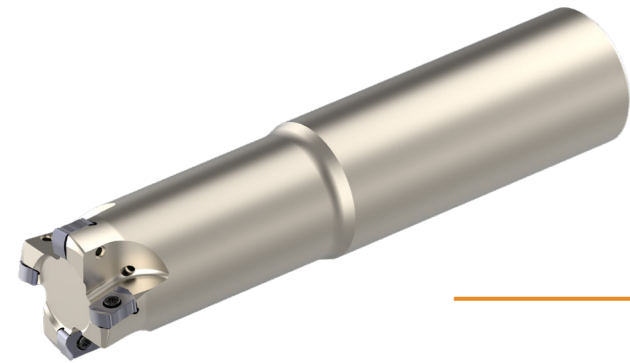


Application: Drilling
Solution: Achteck D190 modular drill or short hole drill

- Various geometries are suitable for P, M, K, S, H materials
- Modular drill for 1xD to 10xD drilling, short drill for 1xD to 5xD drilling
- The drilling body has double internal coolant holes to optimize the cooling and chip removal

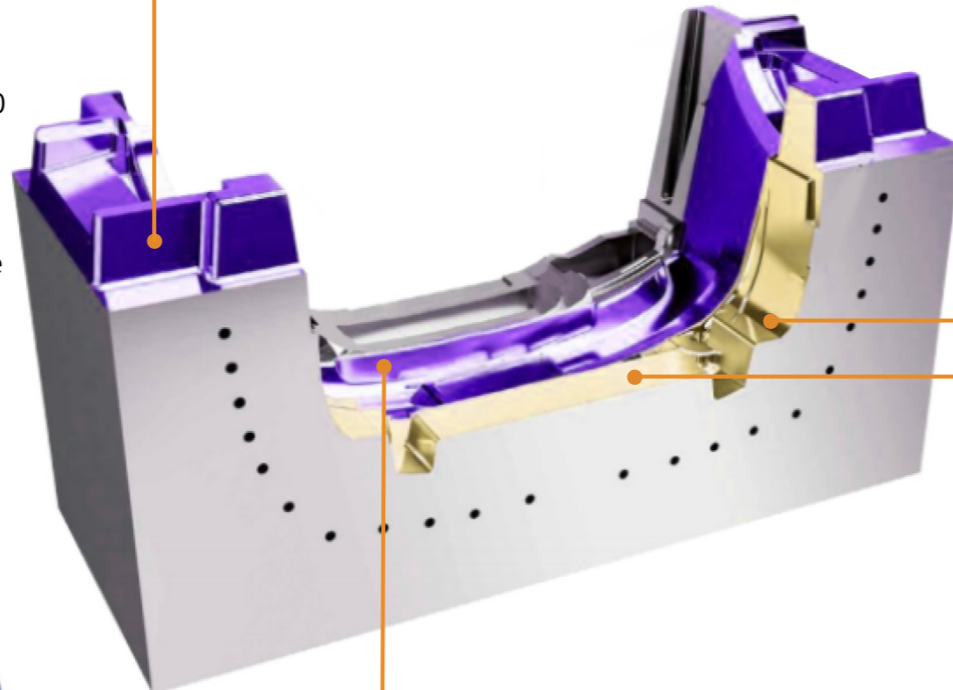


- Injection die and mold: Automotive surround machining
Material: Die and mold steel



Application: High feed milling for pocket rough milling
Solution: Achteck high feed milling tool AHM20-LN10

- Approach Angle 20°, minimum diameter D16 mm
- Negative insert with 4 cutting edges
- Rectangular insert design for stronger cutting edge



Anti-rotation slot

Application: Semi-finishing of arc surface
Solution: Achteck profile milling cutter APM00-RO08/10...

- Round insert with multiple anti-rotation slots to securely clamp the insert



Application: Semi-finishing and finishing of transition round corners
Solution: Achteck high feed milling cutter APM00-RPM08/10...

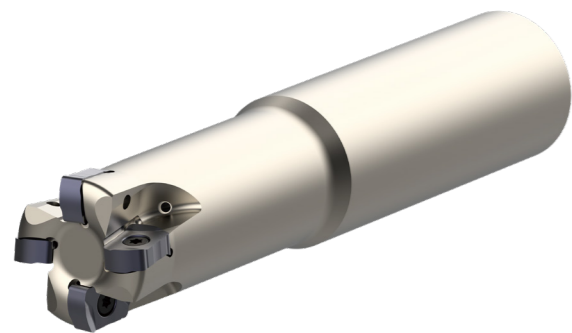
- Anti-rotation slot at the bottom of the insert to avoid overcut or undercut
- Universal geometry and spiral edge design for low cutting force
- Peripheral and central edge available for each insert



Application: Peripheral profile rough shoulder milling
Solution: Achteck APKT 17 shoulder milling cutter series

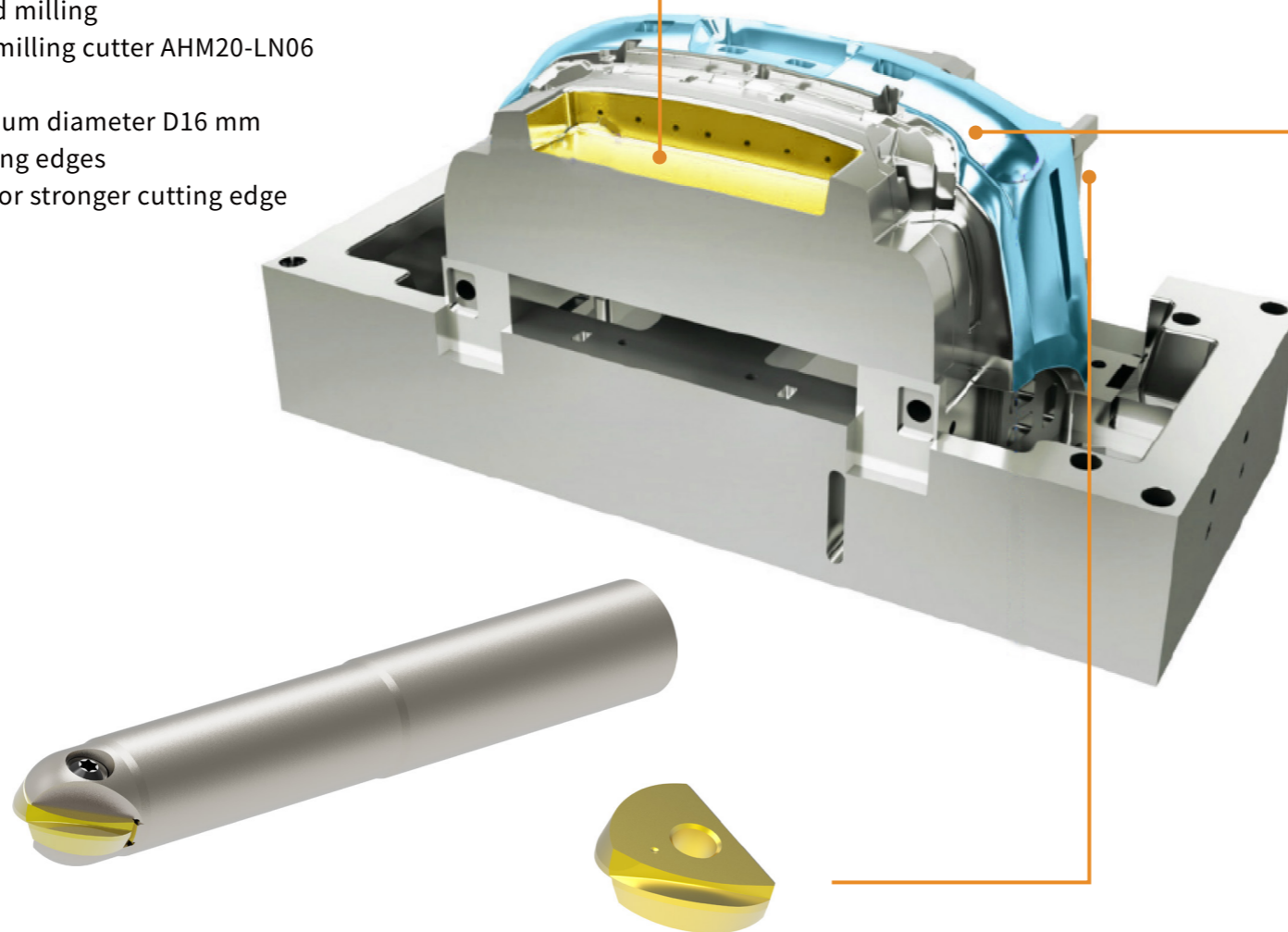
- Versatile grade for common materials and special grade for difficult-to-machine materials

- Injection die and mold: Automotive surround machining
Material: Die and mold steel



Application: Pocket high feed milling
Solution: Achteck high feed milling cutter AHM20-LN06

- Approach Angle 20°, minimum diameter D16 mm
- Negative insert with 4 cutting edges
- Rectangular insert design for stronger cutting edge



Application: Profile finish milling
Solution: Achteck ABMM-FBM ball nose finish milling series

- Strong cutting edge
- The S-shaped cutting edge effectively reduces the vibration during machining and improves the surface finish
- Special grade for difficult-to-machine materials



Anti-rotation slot

Application: Semi-finishing of arc surface
Solution: Achteck profile milling cutter APM00-RO08/10

- Round insert with multiple anti-rotation slots to securely clamp the insert

- Blow mold-glass mold
Material: Die and mold steel



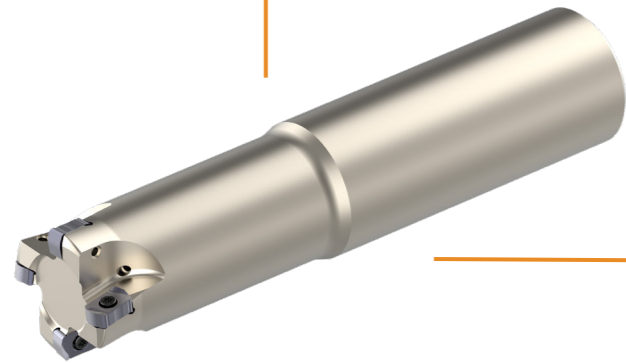
Application: ISO external, face and internal turning
Solution: Achteck ISO tool holder series

- Available for C, D, W, V, T, R, S and other positive and negative inserts
- Various chip breakers for P, M, S materials
- High pressure internal coolant tool bar for difficult-to-machine materials



Application : Deep hole drill will internal coolant
Solution: Achteck solid carbide drill for deep hole

- AK10F substrate, double spiral internal coolant holes
- Special edge design, effectively reduce the vibration
- Polished chip flute, smooth chip removal



Application: Pocket high feed milling
Solution: Achteck high feed milling cutter AHM20-LN06

- Approach Angle 20°, minimum diameter D16 mm
- Negative insert with 4 cutting edges
- Rectangular insert design for stronger cutting edge



