

LUV2000T, 2100T

CATALOGUE 2024-25



## Touch screen Double Beam UV- Vis.Spectrophotometer

LUV2000T & LUV2100T

### SALIENT FEATURES

- ✦ Full wavelength scanning (190-1100nm) covers UV, Vis. near IR.
- ✦ Fully sealed structure, all optical mirrors are equipped with SiO<sub>2</sub> protective film to avoid stray light caused by dust and corrosive gas.
- ✦ Core components reduce the stray light and improve the stability and reliability.
- ✦ Double beam optical system with precision vertical-type dual optical path and dual detector.
- ✦ Grating of high performance greatly reduces the stray light and improves the stability and reliability of device.
- ✦ 10 inches large touch screen, built-in 32GB memory.
- ✦ Powerful data analysis system with internal computer could realize multi functions independently. Like establishing calibration curve, photometric measurement, quantitative measurement, spectral scanning, dynamics, DNA/Protein test, multi-wavelength analysis and data printing.
- ✦ W Lamp / D2 Lamp can monitor of usage hours.
- ✦ Data can export in Pendrive directly
- ✦ Convenient data storage and printing function. LUV Series can be directly connected to the printer HP DESKJET 2723 for A4 paper data and graph printing.
- ✦ Automatic power ON self test and system positioning function could inspect and calibrate the deviation before every use.
- ✦ All test data and analysis report can be exported to USB disk directly.
- ✦ Graphs support 3D display,
- ✦ PC software follows GLP & GMP standards, user management, logging, data tracking, etc. mostly as per 21CFR Part 11.



E - Catalogue

**LUV200T, 2100T**

CATALOGUE 2024-25



## Touchscreen Double Beam UV- Vis.Spectrophotometer

HSN Code : 90273020

MODEL	LUV2000T	LUV2100T
Bandwidth	1.0nm	1.0, 2.0, 4.0,5.0 nm (variable)
Make	LABMAN	
Optical System	Double beam	
Wavelength Range	190-1100nm	
Wavelength Accuracy	±0.1nm(D2 656.1nm),±0.3 nm full range	
Wavelength Repeatability	±0.1nm	
Photometric Range	0-200%T. -0.3-3.0A, 0-9999C	
Photometric Accuracy	±0.2T(0-100%T), ±0.002Abs(0-0.5Abs),±0.004Abs(0.5-1.0Abs )	
Photometric Repeatability	≤0.05%6T(0-100%6T), 0.001Abs(0-0.5Abs), 0.002Abs(0.5-1.0Abs)	
Stability	±0.0004A/h @ 500nm	
Stray Light	0.03%T @ 220 nm, 360 nm	
Cell Holder	10mm each, Sample & Reference Cuvette Holder	
Focal Length	10mm	
Light Source	Tungsten Lamp & Deuterium lamp	
Resolution	0.1nm	
Display	Touchscreen 10-inches (800 x 480) HD TFT	
Memory	32GB	
Detector	Silicon Photodiode	
Control Mode	Stand-alone system/PC software	
Baseline flatness	±0.0008A/h	
Data Output	USB	
Power Supply	Adaptor, Using AC 220V,50/60Hz	
Dimension (L x W x H)	630 x 430 x 210mm	
Weight	28kg	

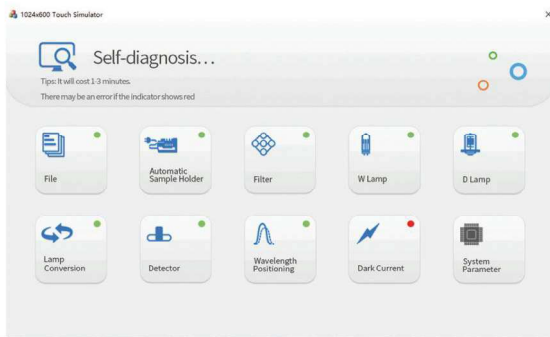
★ Specifications are subject to change without notice.

**OPTIONAL ACCESSORIES :** Programmable 8 Cell Holder, Peltier / Sipper System, Multicell Holder (Upto 100mm)

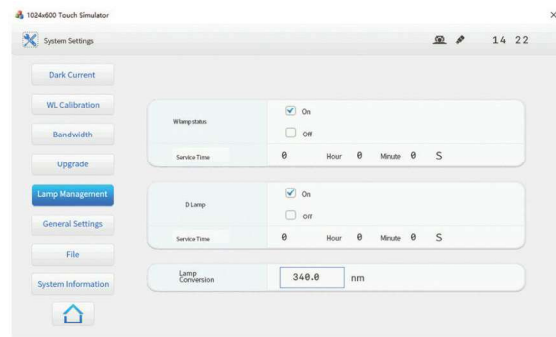
**STANDARD ACCESSORIES :** Main Instrument, Power Cord, Quartz Cuvette, Glass Cuvette, Software, Dust Cover, Test Certificate

LUV2000T, LUV2100T, LUV1100T - Touchscreen Double / Single Beam UV- Vis.Spectrophotometer

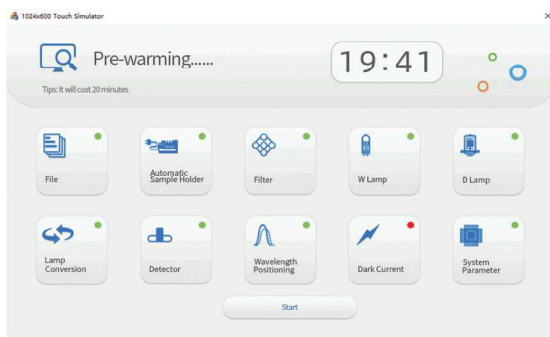
- Automatic self-inspection: all system parameters will be inspected when device turns on. If any error occurs, the system will automatically beep to alarm, and the status indicator of the option is displayed as red which is easy to analyze the exact problem.



- Lamp monitoring system: one-touch switching the tungsten lamp and deuterium lamp, real-time monitoring of lamps

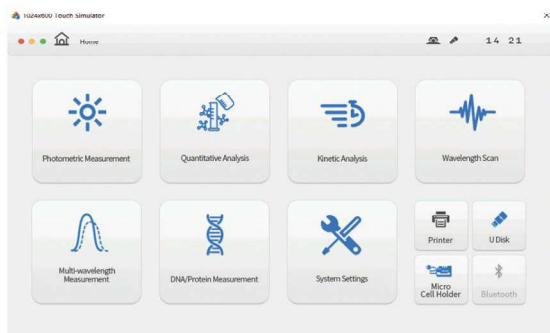


- Real-time record of the warm up time.

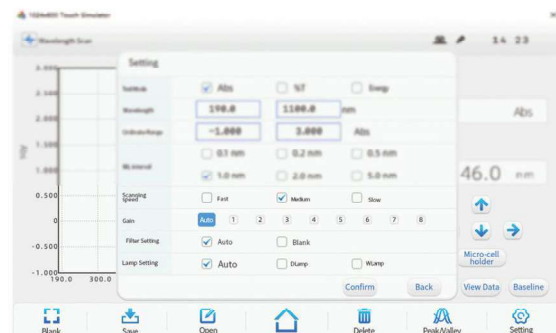


- Data retrieval and graph zooming are available.
- It supports data sharing, Excel & TXT data transfer and Windows clipboard.
- Easy to switch sample position by automatic cell holder.
- Common concentration units are available, like  $\mu\text{g/L}$ ,  $\text{mg/L}$ ,  $\text{g/L}$ ,  $\text{ppm}$  and  $\text{mol/L}$  to meet most of needs.

- Multi-functions like photometric measurement, quantitative measurement, kinetics, spectral scanning, multi-wavelength analysis, DNA/ Protein test, etc.



- Three levels of scanning speed can be selected, which suits for samples with different characteristics and obtains reliable scanning results.



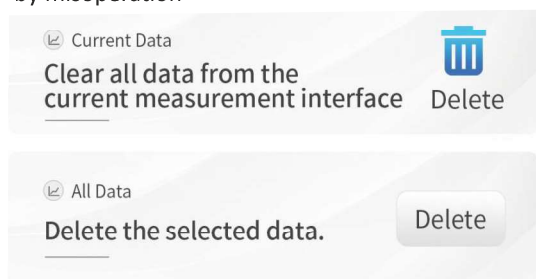
# LUV SERIES

CATALOGUE 2024-25

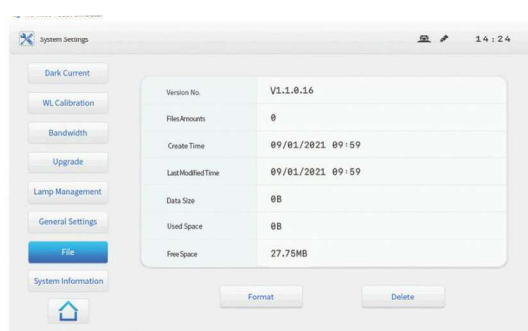


## LUV2000T, LUV2100T, LUV1100T - Touchscreen Double / Single Beam UV- Vis.Spectrophotometer

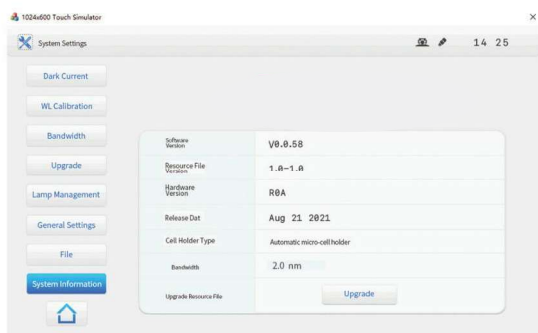
Secondary data deletion to avoid data loss caused by misoperation



Status of USB storage is able check



Upgrade the system software by one-click



### Multi-channel for data transmission :

Spectral scan data can be stored in the host; data can be saved in the USB when USB connected, the file name is editable: It is able to connect the printer HP DESKJET 2723 directly to output data in A4 paper

### PC Software

PC software follows GLP & GMP standards, user management, logging, data tracking, etc. mostly as per 21CFR Part 11.

### Functions

Photometric measurement, three dimensional quantitative measurement, kinetics test and spectrum scanning, DNA/Protein test, Multi-wavelength and multicurve measurement

