





HANDS ON TECH
 CONSTRUCTION

Hands On Technology, LLC 720-360-9506
 9191 Sheridan Blvd, suite 318 1-800-716-7307
 Westminster, CO 80031 bryce@handsontech.construction
 Contractors License # GC-002334-2018

MONTVERDE PARTNERS, LLC
 593 GALLEGOS CIRCLE
 ERIE, COLORADO 80516
 720-625-0070

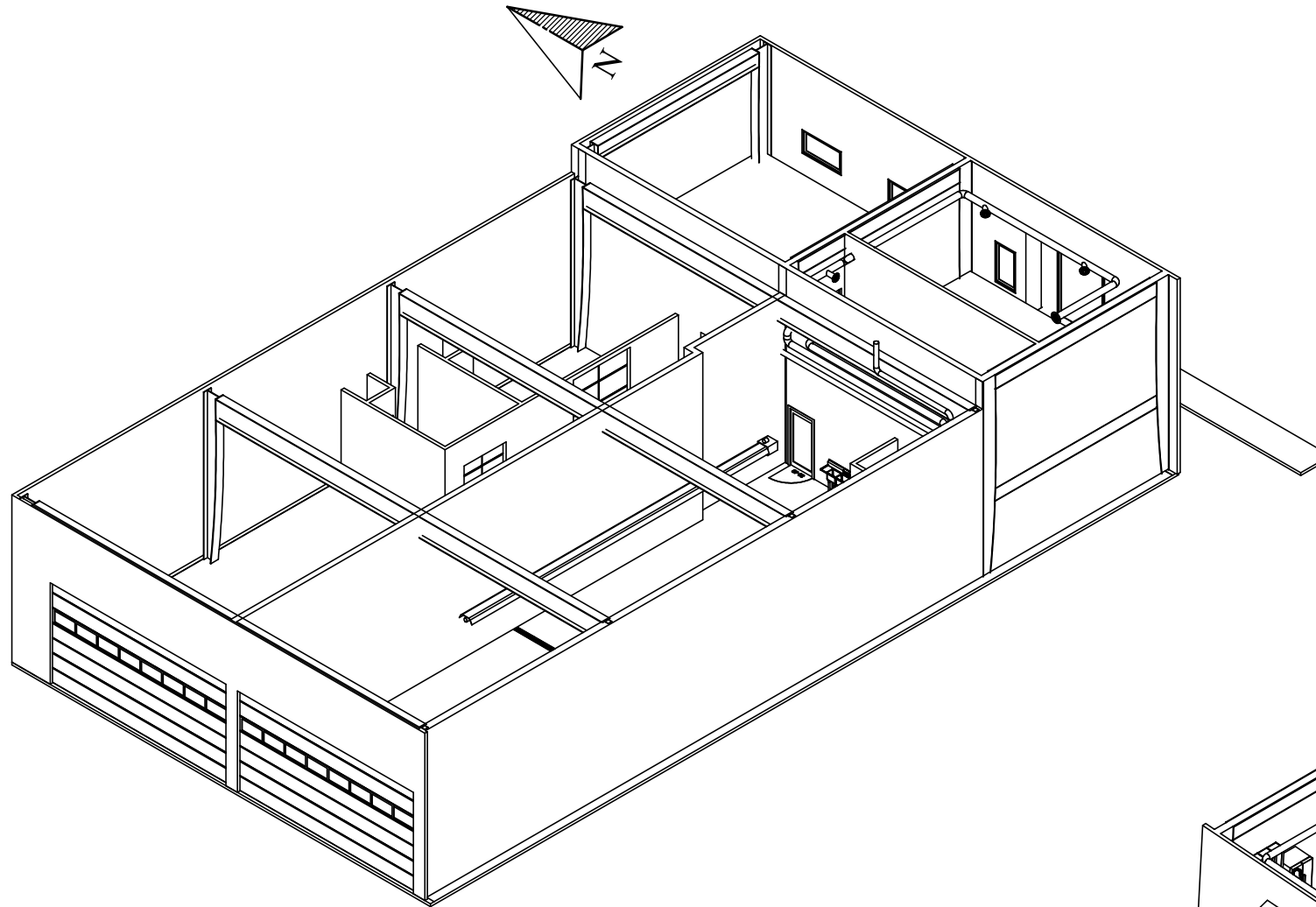
Biz Lic # 20171211663
 RAMON CHIMELIS
 ramon@montvp.com

BUILDING F
3000 AIRPORT DRIVE
ERIE, CO 80516 201-B

SITE PLAN

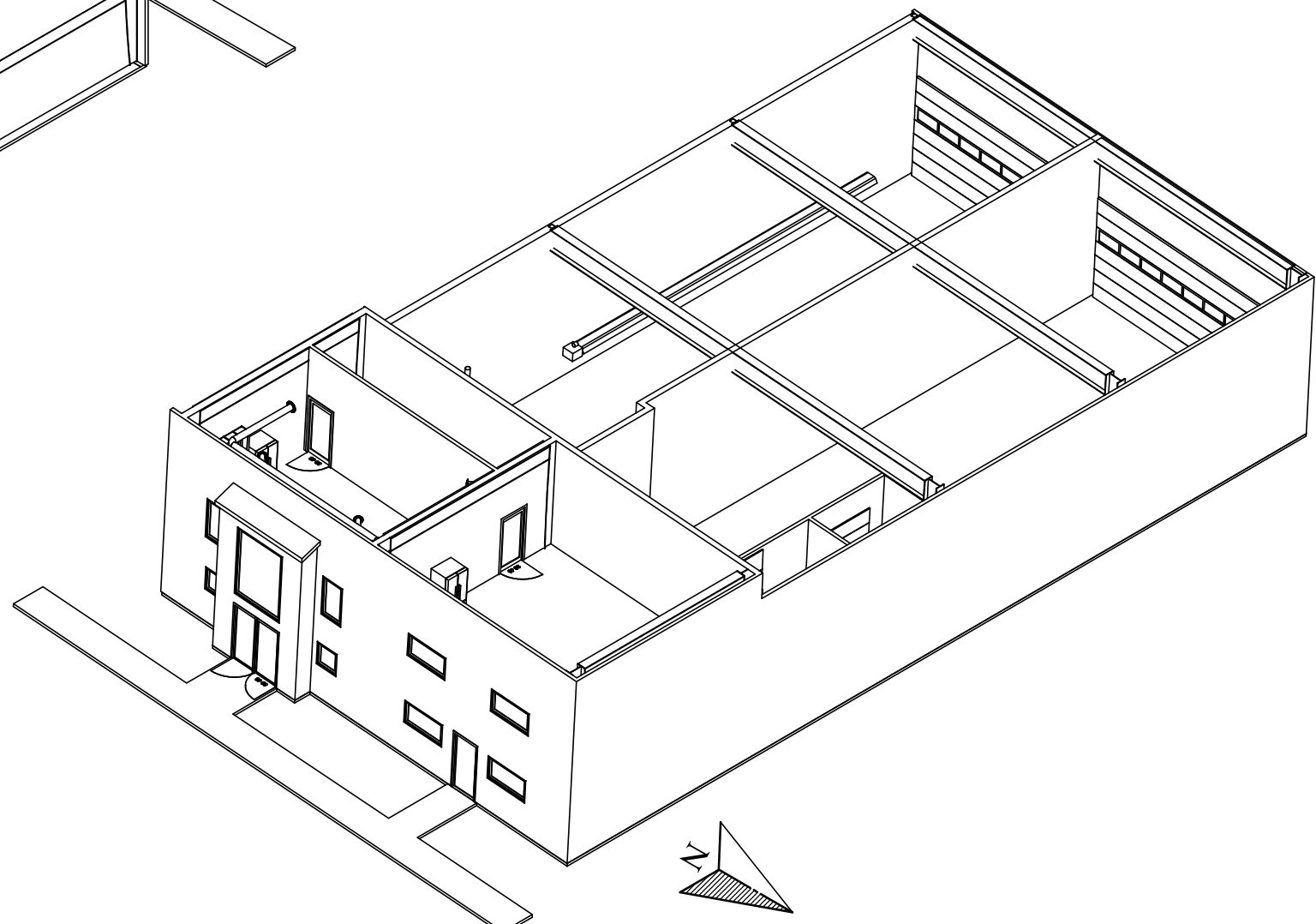
12/6/2018	SHEET 1 OF 8
-----------	--------------

3000 Airport Drive 201-B



3D VIEW - SOUTH WEST

1/8" = 1'-0"



3D VIEW - NORTH EAST

1/8" = 1'-0"

HANDS ON TECH
CONSTRUCTION

Hands On Technology, LLC
9191 Sheridan Blvd, suite 318
Westminster, CO 80031
720-360-9506
1-800-716-7307
bryce@handsontech.construction
Contractors License # GC-002334-2018

MONTVERDE PARTNERS, LLC
593 GALLEGOS CIRCLE
ERIE, COLORADO 80516
720-625-0070
Biz Lic # 20171211663
RAMON CHIMELIS
ramon@montvp.com

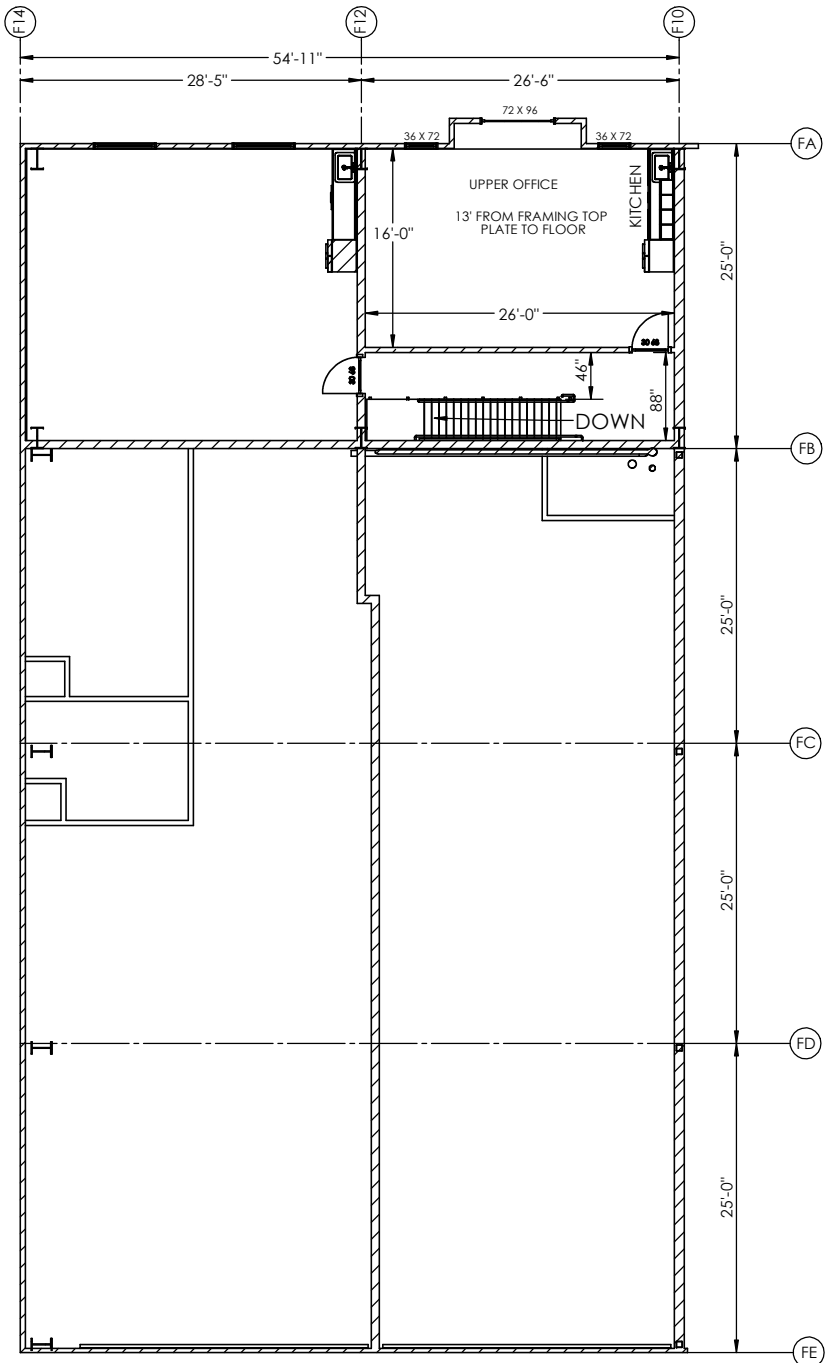
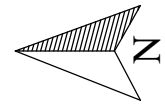
BUILDING F
3000 AIRPORT DRIVE
ERIE, CO 80516 201-B

3D VIEW
PLAN

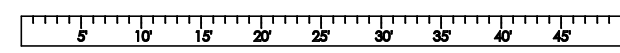
12/6/2018

SHEET 2 OF 8

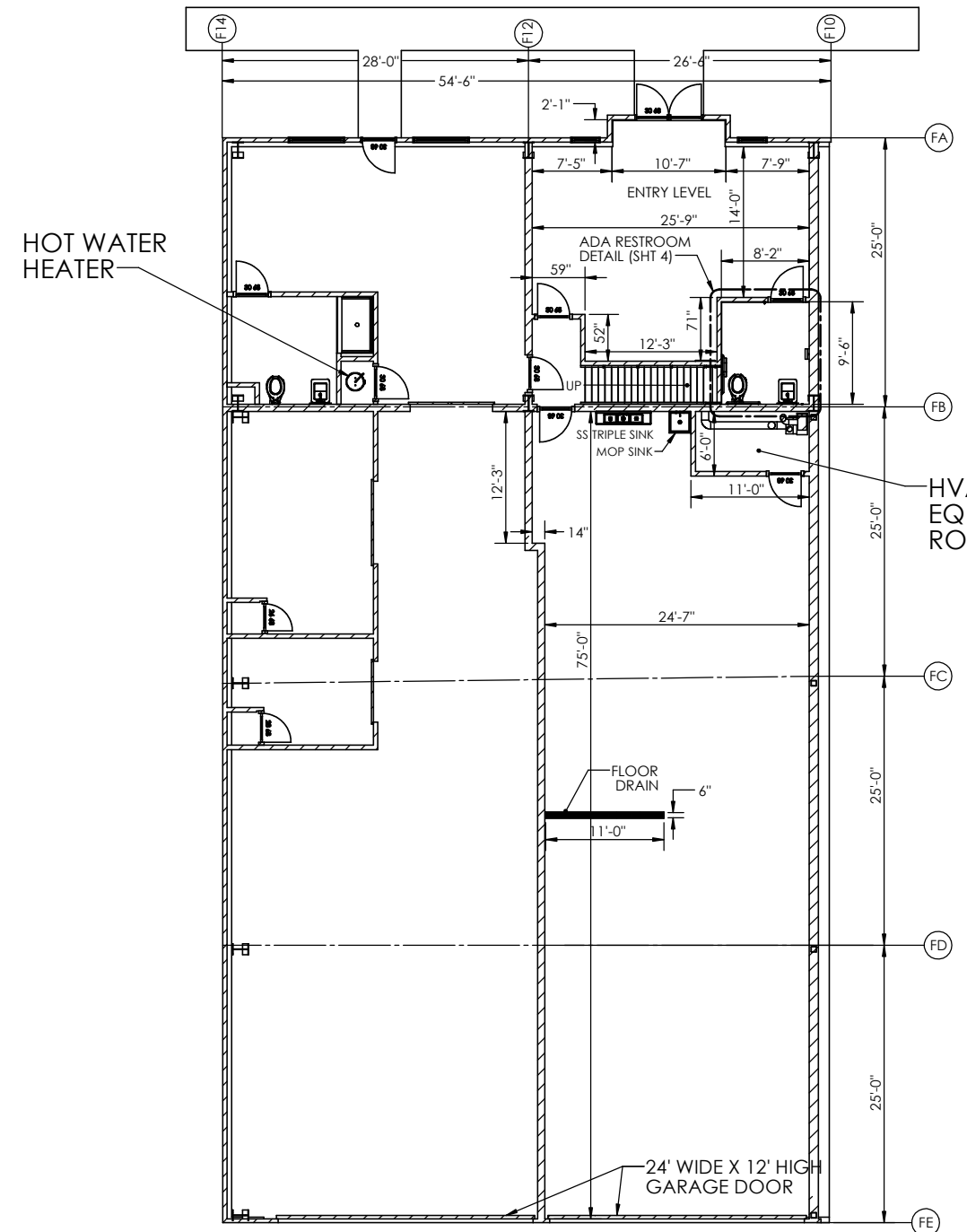
3000 Airport Drive 201-B



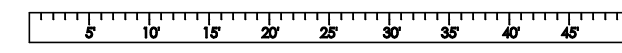
PLAN VIEW - LEVEL 2



1/8" = 1'-0"



PLAN VIEW - LEVEL 1



1/8" = 1'-0"

HOT WATER HEATER	
MODEL NO:	RE340T6-1NCWW
SERIAL NO:	SB40993086
NOM. CAP.:	40(US GAL) 151.4 (LITERS)
TYPE:	ELECTRIC
VOLTAGE:	240V / 208V
	1 PHASE AC ONLY
WATTAGE UPPER:	4500W/3500W
PRESSURE:	TEST 300(PSI) WORKING 150(PSI)

HVAC UNIT	
MODEL NO:	4PXCBU48BS3HAAA
SERIAL NO:	17143JBT5G
DESIGN PSI:	480
REFRIGERANT TYPE:	R-410A
CAPACITY:	48,000 (BTUH)
SERIES:	PREMIUM HIGH EFFICIENCY

HOT WATER HEATER

HVAC EQUIPMENT ROOM

24' WIDE X 12' HIGH GARAGE DOOR

HANDS ON TECH
CONSTRUCTION

Hands On Technology, LLC
9191 Sheridan Blvd, suite 318
Westminster, CO 80031
720-360-9506
1-800-716-7307
bryce@handsontech.construction
Contractors License # GC-002334-2018

MONTVERDE PARTNERS, LLC
593 GALLEGOS CIRCLE
ERIE, COLORADO 80516
720-625-0070

Biz Lic # 20171211663
RAMON CHIMELIS
ramon@montvp.com

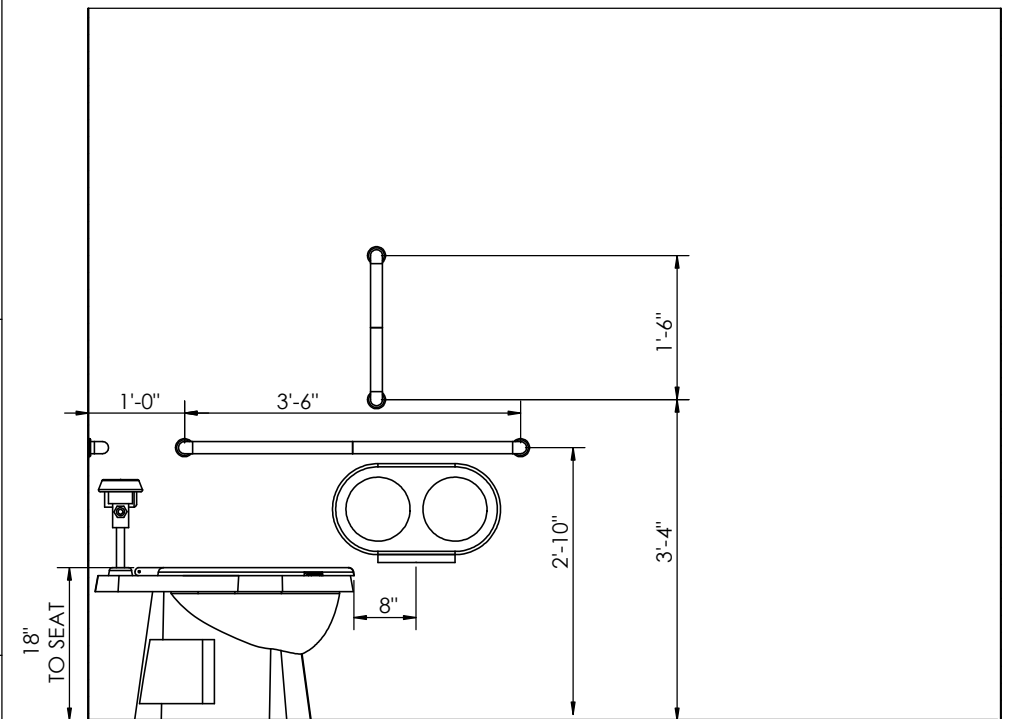
BUILDING F
3000 AIRPORT DRIVE
ERIE, CO 80516 201-B

FLOOR PLAN
LEVEL 1 & 2

12/6/2018

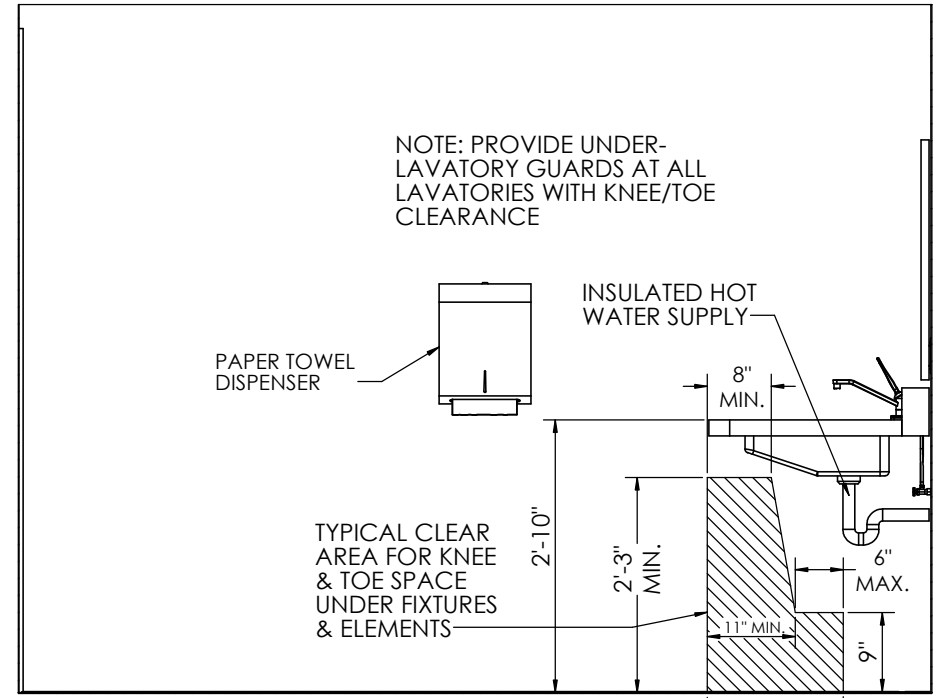
SHEET 3 OF 8

D:\300 Airport Drive 2018



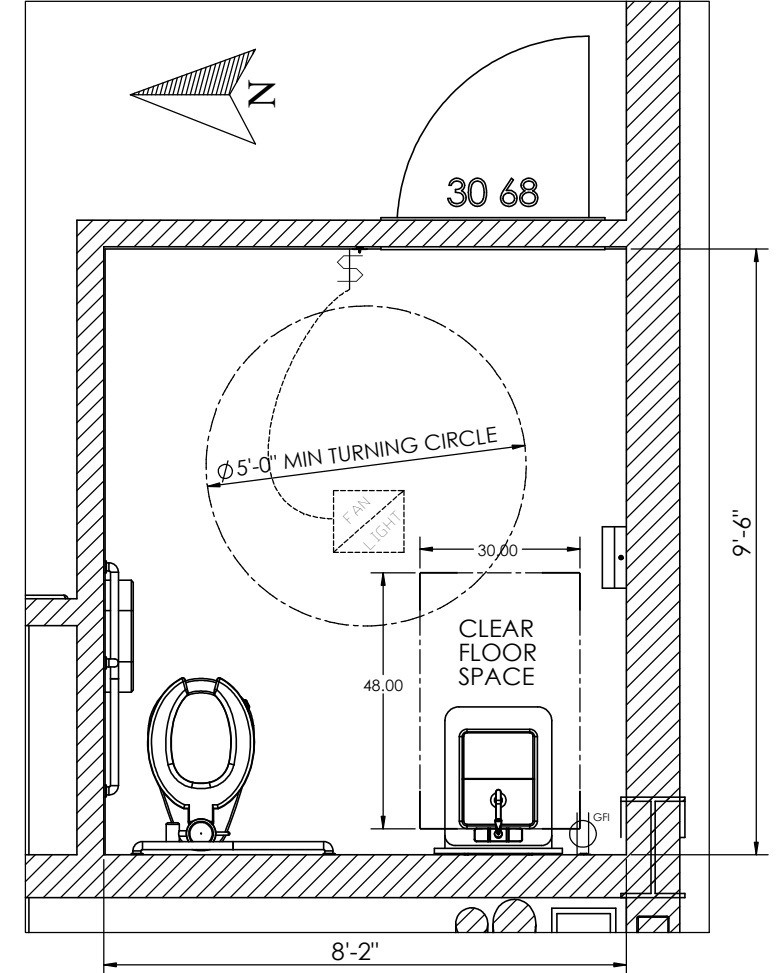
NORTH ELEVATION - RESTROOM

1" = 1'-0"



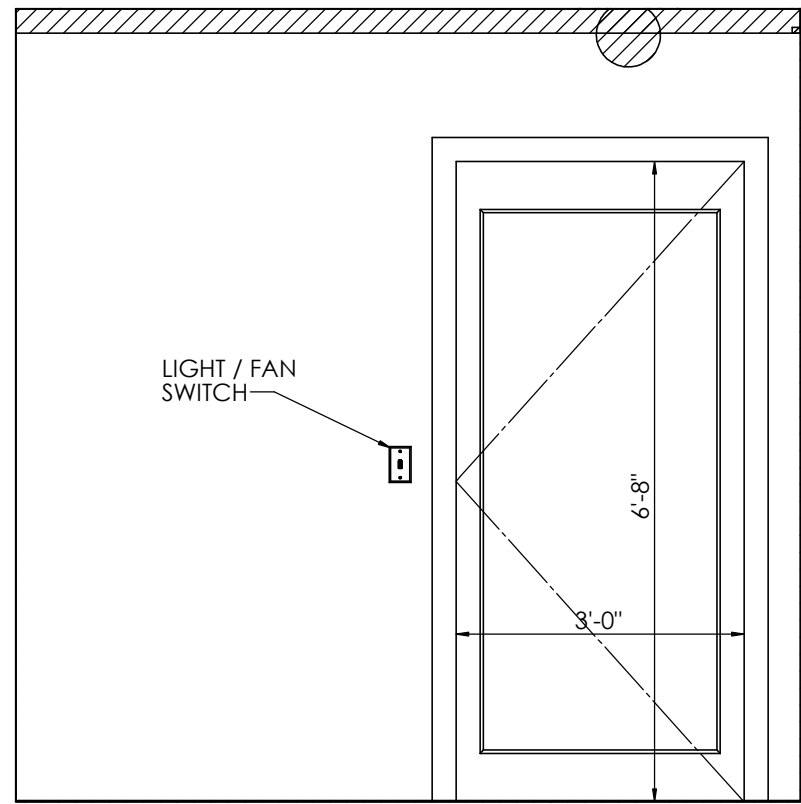
SOUTH ELEVATION - RESTROOM

1" = 1'-0"



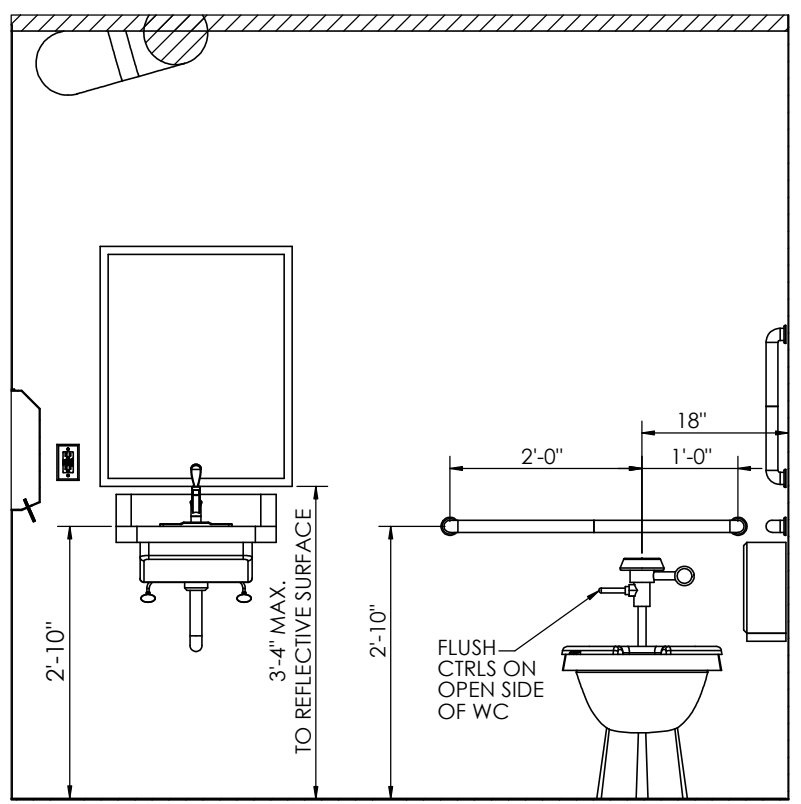
ENLARGED ADA RESTROOM PLAN

1" = 1'-6"



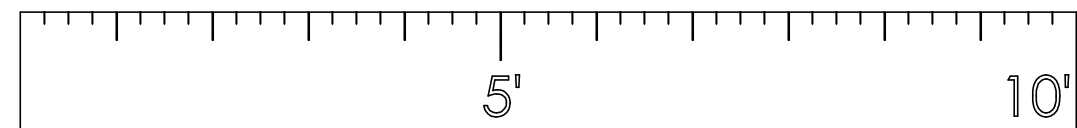
EAST ELEVATION - RESTROOM

1" = 1'-0"



WEST ELEVATION - RESTROOM

1" = 1'-0"



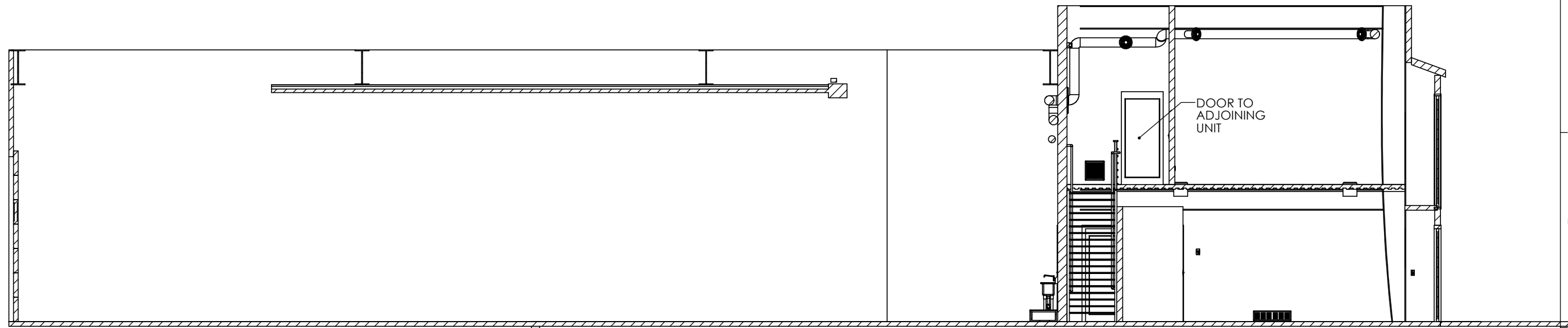
HANDS ON TECH
CONSTRUCTION

Hands On Technology, LLC
9191 Sheridan Blvd, suite 318
Westminster, CO 80031
720-360-9506
1-800-716-7307
bryce@handsontech.construction
Contractors License # GC-002334-2018

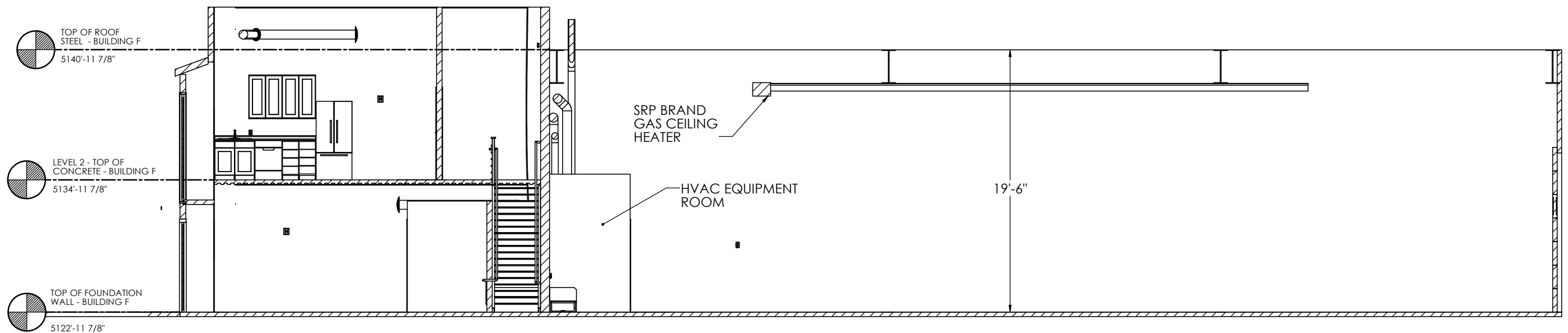
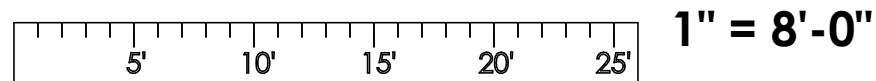
MONTVERDE PARTNERS, LLC
593 GALLEGOS CIRCLE
ERIE, COLORADO 80516
720-625-0070
Biz Lic # 20171211663
RAMON CHIMELIS
ramon@montvp.com

BUILDING F
3000 AIRPORT DRIVE
ERIE, CO 80516 201-B

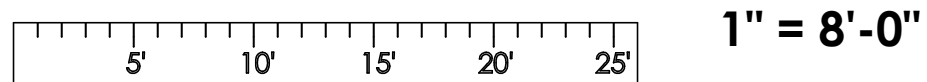
ADA RESTROOM
DETAIL PLAN
12/6/2018
SHEET 4 OF 8



BUILDING SECTION - NORTH VIEW



BUILDING SECTION - SOUTH VIEW



HANDS ON TECH
CONSTRUCTION

Hands On Technology, LLC
9191 Sheridan Blvd, suite 318
Westminster, CO 80031
720-360-9506
1-800-716-7307
bryce@handsontech.construction
Contractors License # GC-002334-2018

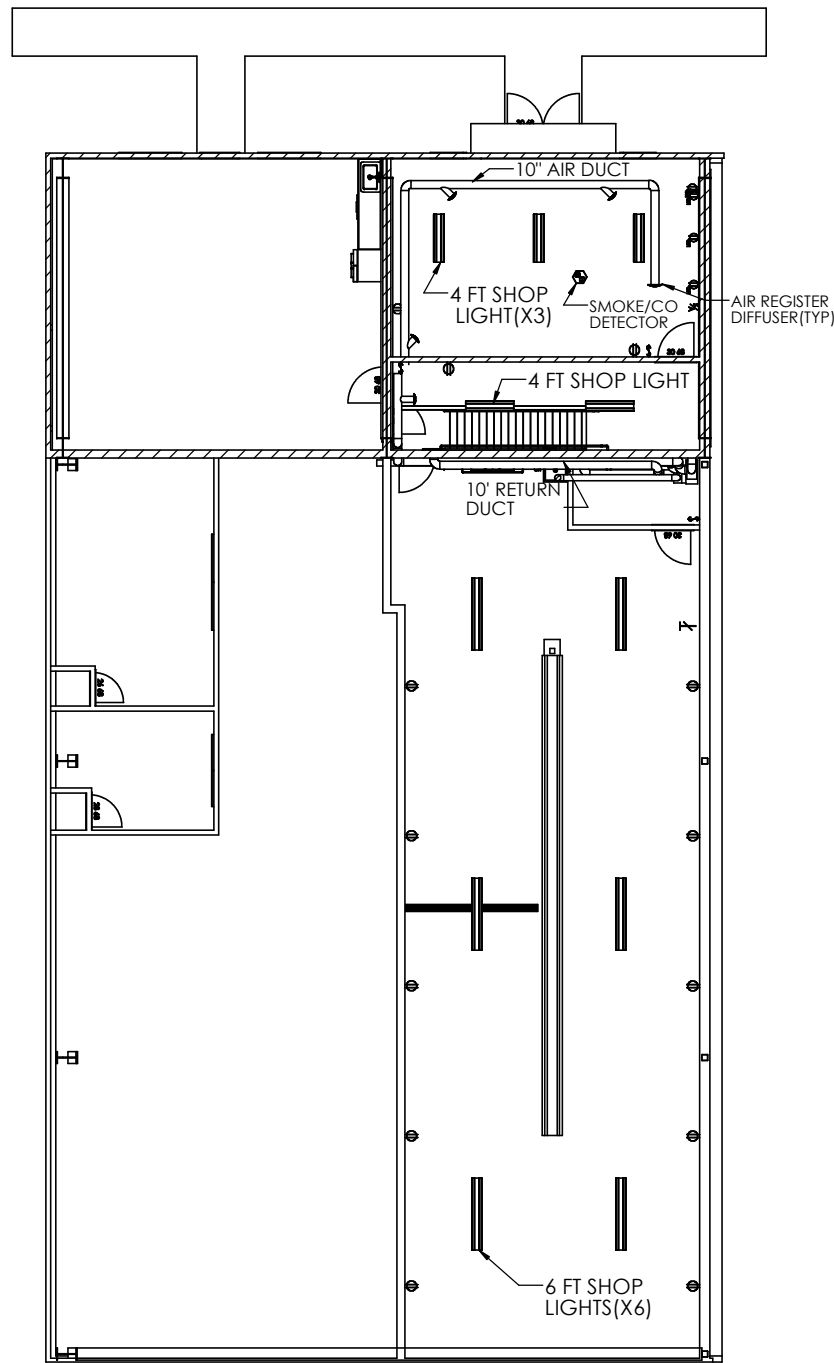
MONTVERDE PARTNERS, LLC
593 GALLEGOS CIRCLE
ERIE, COLORADO 80516
720-625-0070
Biz Lic # 20171211663
RAMON CHIMELIS
ramon@montvp.com

BUILDING F
3000 AIRPORT DRIVE
ERIE, CO 80516 201-B

BUILDING
SECTION VIEW

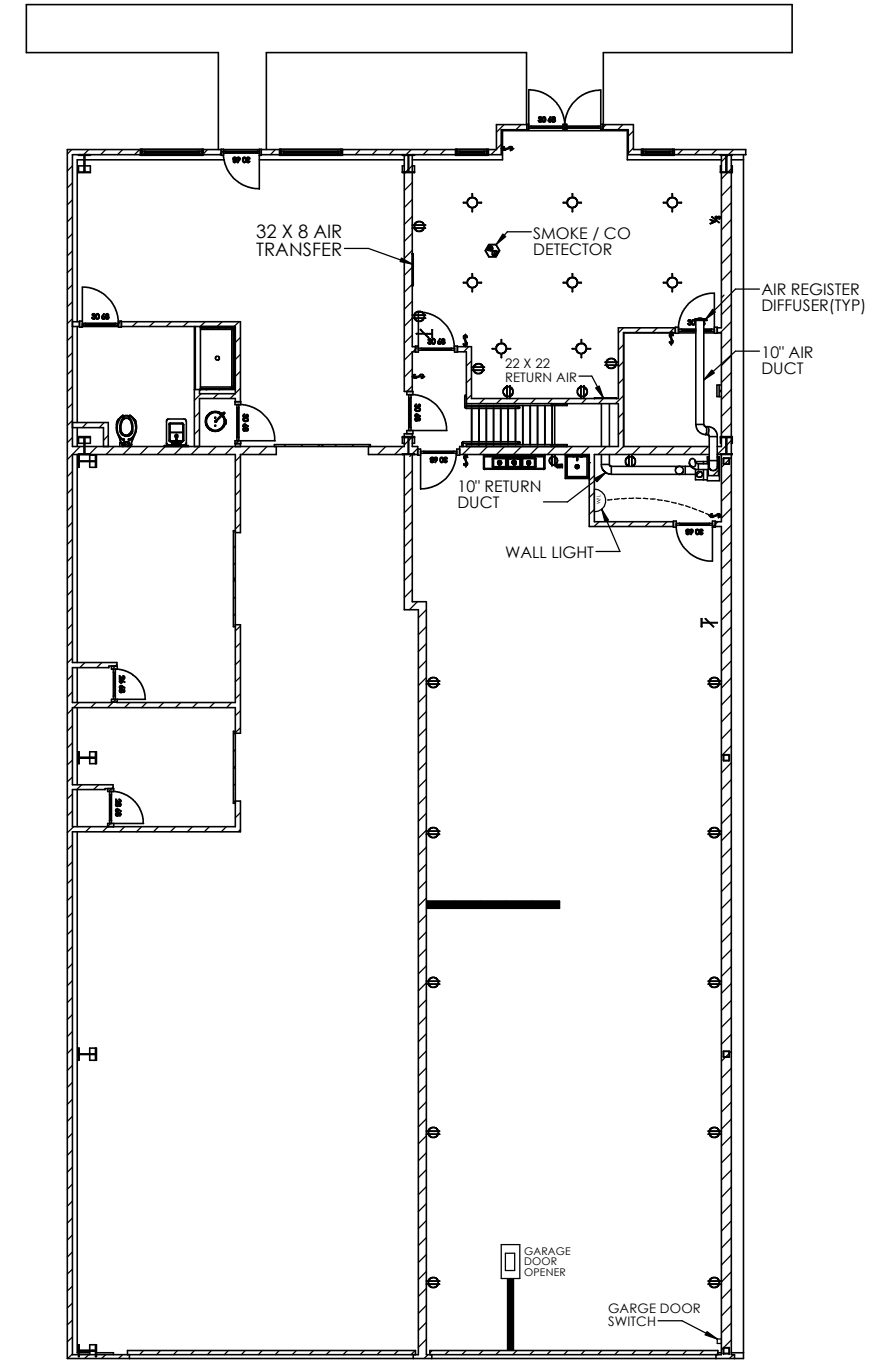
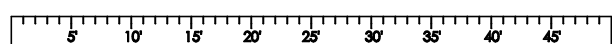
12/6/2018

SHEET 5 OF 8



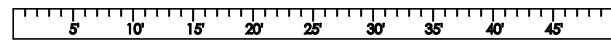
MEP PLAN VIEW - LEVEL 2




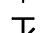



1/8" = 1'-0"



MEP PLAN VIEW - LEVEL 1

1/8" = 1'-0"



-  DUPLEX RECEPTACLE
-  GROUND FAULT RECEPTACLE
-  LIGHT SWITCH
-  THERMOSTAT
-  SMOKE / FIRE ALARM
-  SMOKE & CARBON DIOXIDE DETECTOR
-  CAN RECESSED LIGHT

HANDS ON TECH
CONSTRUCTION

Hands On Technology, LLC
9191 Sheridan Blvd, suite 318
Westminster, CO 80031
bryce@handsontech.construction
Contractors License # GC-002334-2018

720-360-9506
1-800-716-7307

MONTVERDE PARTNERS, LLC
593 GALLEGOS CIRCLE
ERIE, COLORADO 80516
720-625-0070

Biz Lic # 20171211663
RAMON CHIMELIS
ramon@montvp.com

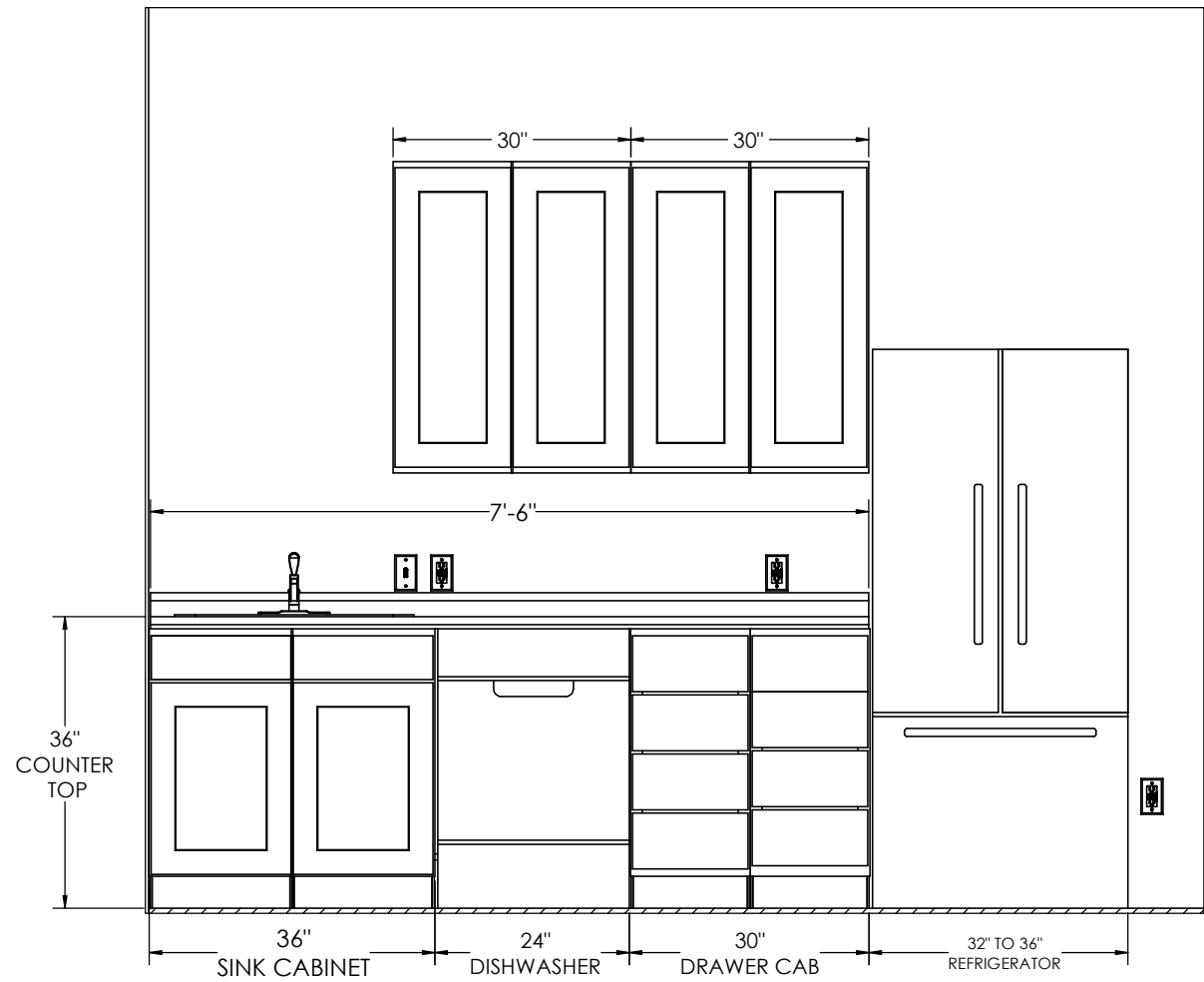
BUILDING F
3000 AIRPORT DRIVE
ERIE, CO 80516 201-B

MEP PLAN
ELEC/ HVAC

12/6/2018

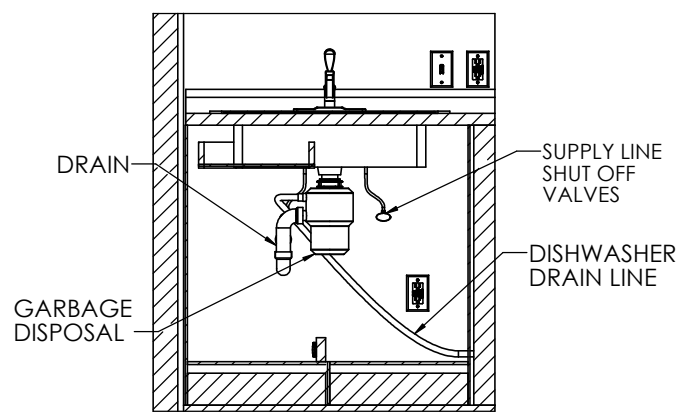
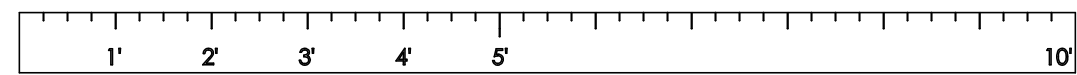
SHEET 6 OF 8

D:\00 Airport Drive 2018

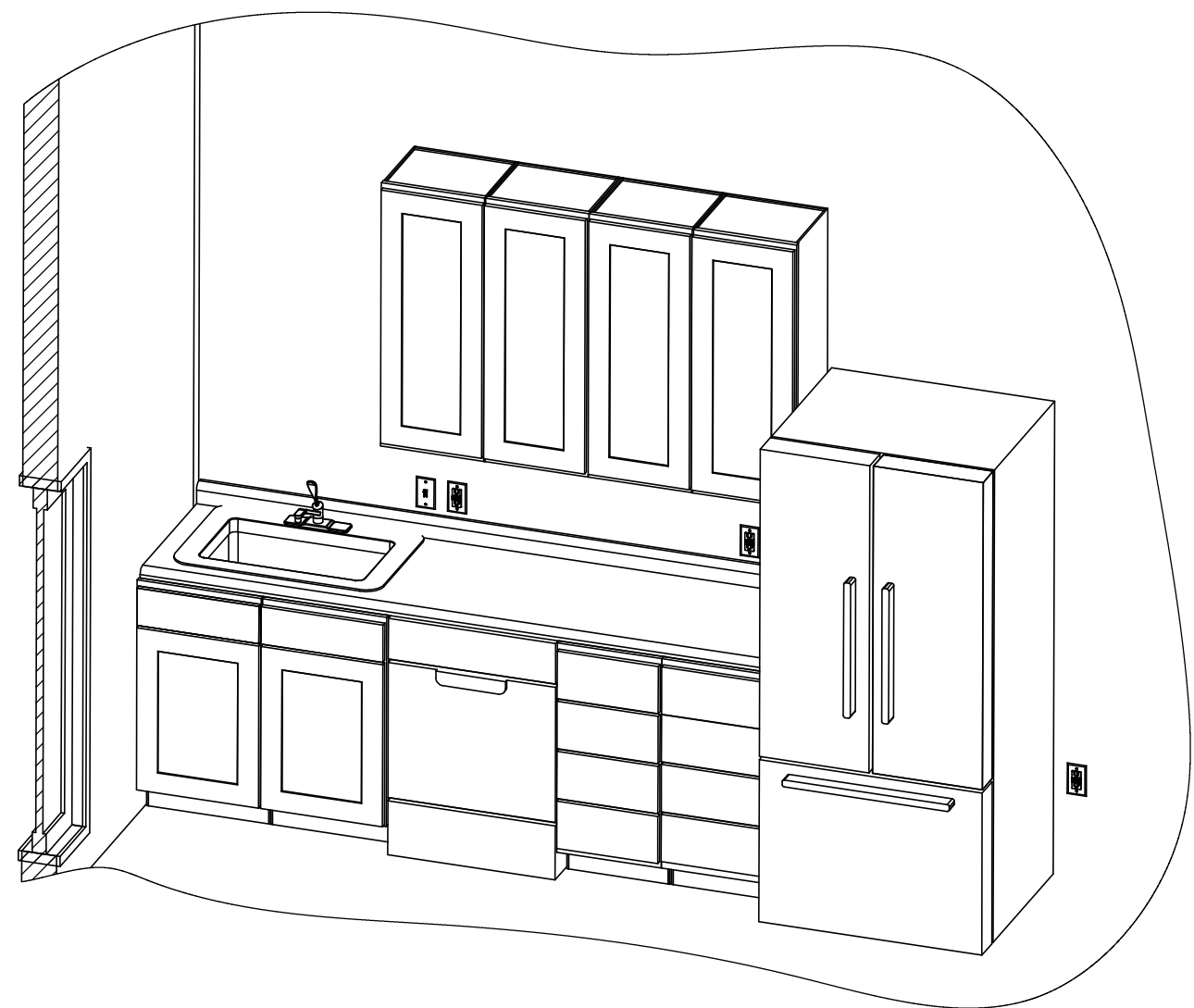


KITCHENETTE - ELEVATION VIEW

1" = 1'-0"



UNDER SINK PLUMBING



KITCHENETTE - 3D VIEW

1" = 1'-0"

HANDS ON TECH
CONSTRUCTION

Hands On Technology, LLC
9191 Sheridan Blvd, suite 318
Westminster, CO 80031
720-360-9506
1-800-716-7307
bryce@handsontech.construction
Contractors License # GC-002334-2018

MONTVERDE PARTNERS, LLC
593 GALLEGOS CIRCLE
ERIE, COLORADO 80516
720-625-0070

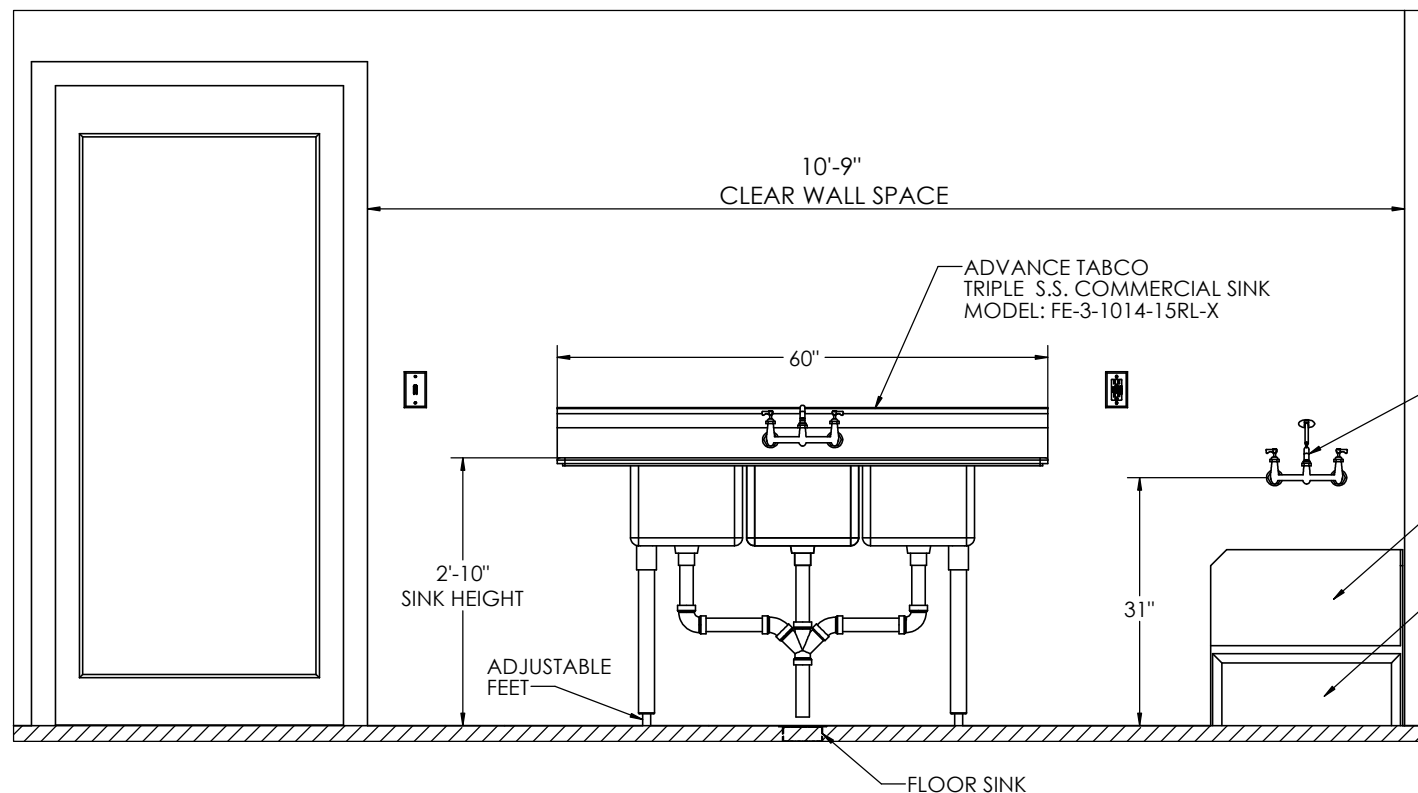
Biz Lic # 20171211663
RAMON CHIMELIS
ramon@montvp.com

BUILDING F
3000 AIRPORT DRIVE
ERIE, CO 80516 201-B

KITCHEN DETAIL
3D & ELEVATION

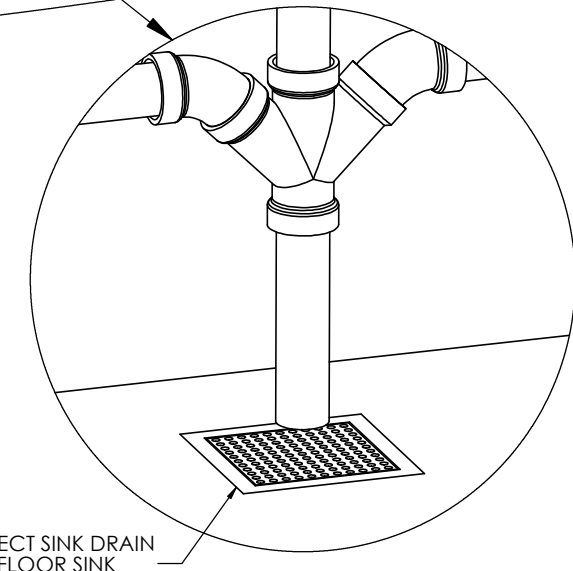
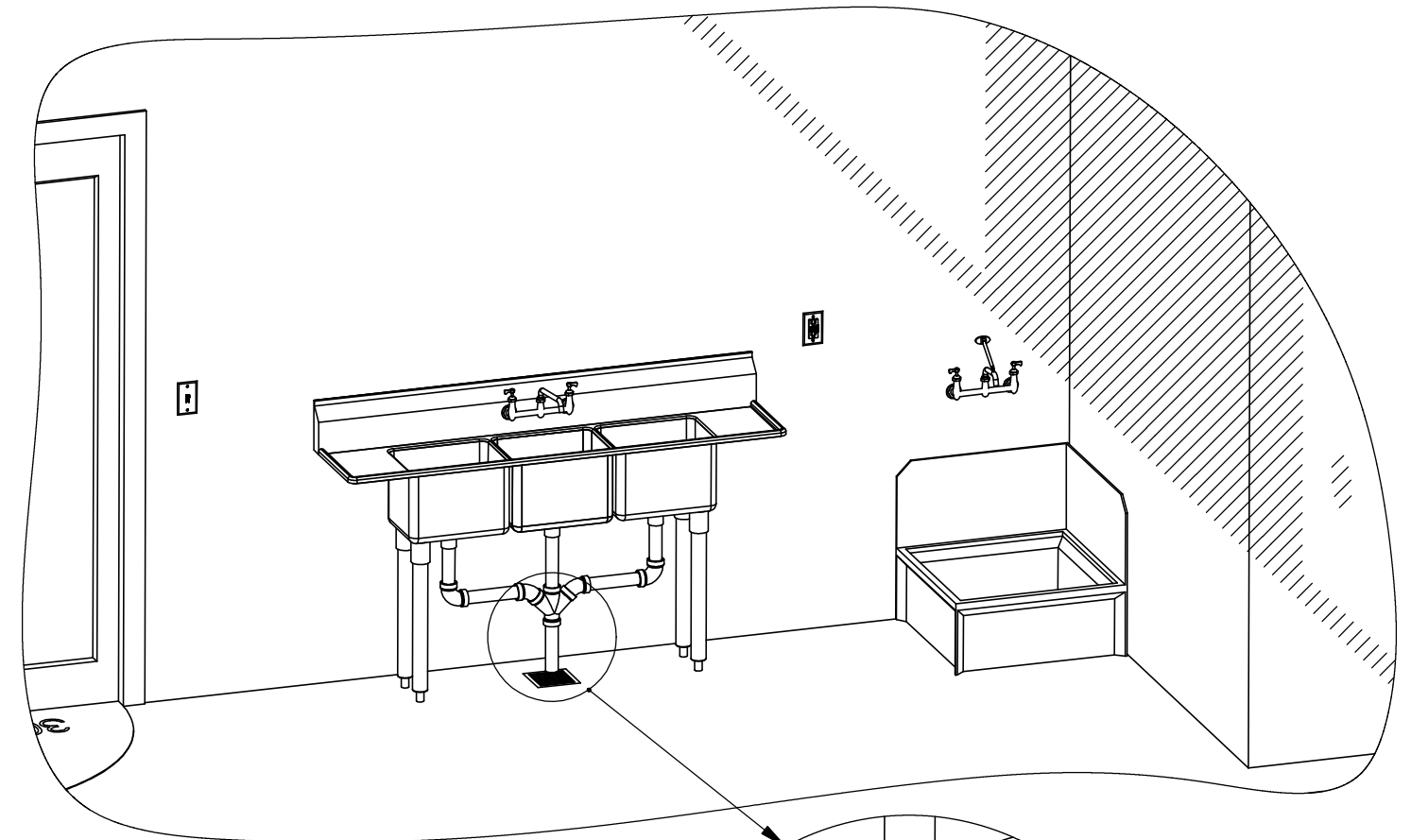
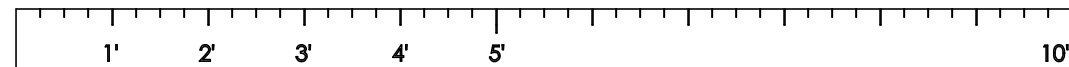
12/6/2018

SHEET 7 OF 8



HANGER SINK - ELEVATION

1" = 1'-0"



HANDS ON TECH
CONSTRUCTION

Hands On Technology, LLC
9191 Sheridan Blvd, suite 318
Westminster, CO 80031
720-360-9506
1-800-716-7307
bryce@handsontech.construction
Contractors License # GC-002334-2018

MONTVERDE PARTNERS, LLC
593 GALLEGOS CIRCLE
ERIE, COLORADO 80516
720-625-0070
Biz Lic # 20171211663
RAMON CHIMELIS
ramon@montvp.com

BUILDING F
3000 AIRPORT DRIVE
ERIE, CO 80516 201-B

SINK DETAIL
INSIDE HANGER

12/6/2018

SHEET 8 OF 8