

The SDG Sphere

Guiding our world toward a well-rounded future



The Sustainable Development Goals Initiative

- The 2030 Agenda for Sustainable Development, adopted by all United Nations Member States in 2015, is a shared “blueprint” for peace and prosperity.
- It calls for all countries to join in a global partnership for sustainable economic, social and environmental development.
- The initiative is focused on achieving 17 Sustainable Development Goals (SDGs).
- The year 2030 is designated as the target year for arriving at full implementation of the plan.



The Sustainable Development Goals Initiative

- The ambitious and aspirational SDG Initiative is a highly complex effort characterized by multi-level bureaucracies and limited resources.
- Long-term and short-term strategies have failed to account for unpredictable changes in the speed, obstacles and conditions challenging implementation in all sectors.
- The target goals and timelines have required multiple revisions.
- The SDG Initiative is intended to direct and control a complex system that is by its nature unpredictable and uncontrollable.



The SDG Sphere

- The SDG Sphere is a new way of looking at the SDGs.
- The SDG Sphere is based on the notion that achieving the goal of worldwide wellbeing requires new ways of seeing, understanding and acting.
- The purpose of looking at the SDG Initiative from a spherical perspective is to enhance understanding and sensemaking at a managerial and field level.
- The SDG Sphere asks the question: How might adopting a unifying and integrative perspective accelerate and enhance the effectiveness and progress of the SDGs?



The Sustainable Development Goals Initiative

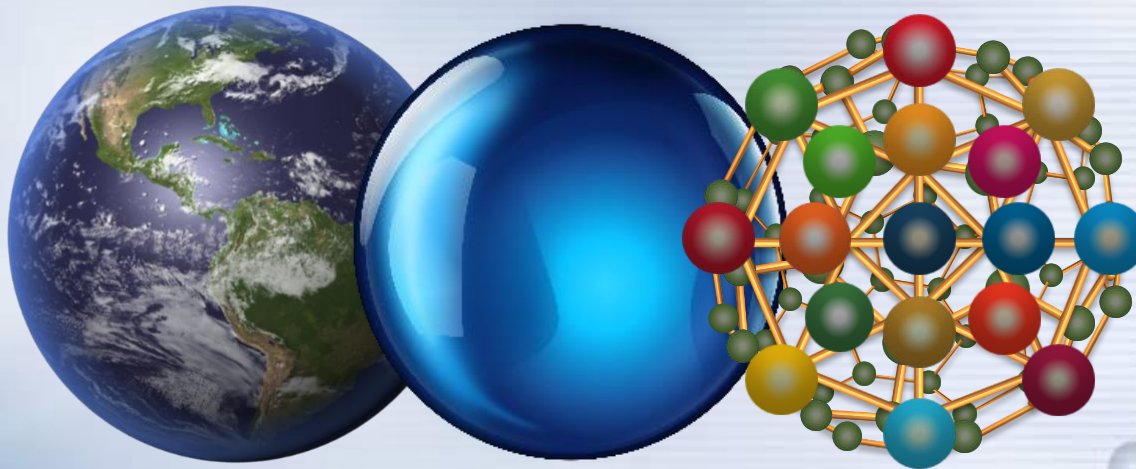


The SDGs are typically depicted as a color-coded grid with icons that signify the individual goals, but with no indication of the interrelationships between them.

The numbering system and grid reflect a categorical and compartmentalized approach to problems-solving.

The SDG Sphere

Guiding our world toward a well-rounded future



The **SDG Sphere** metaphorically, mythologically and graphically represents the goal of the **SDG Initiative** as the global aspiration for a well-rounded world.

Well-rounded, in this case, refers to a world that is just, flourishing and sustainable.

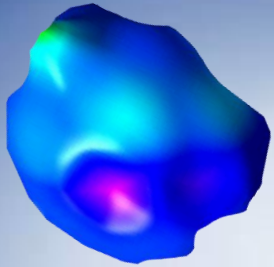
The SDG Sphere

Guiding our world toward a well-rounded future

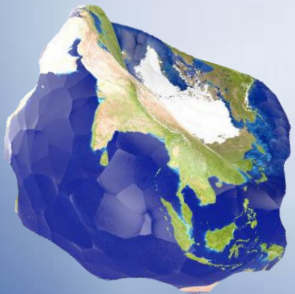


The SDG Sphere depicts the SDGs as a complex, adaptive, interconnected, interrelational, interdependent, tensegral and self-organizing system.

The SDG Sphere



What shape are we in now?



What shape are we in now?



Stakeholders link in and collaborate on issues guided by interrelational perceptions and perspectives that are holistic and contextual.

The SDG Sphere



What shape do we need to be?



What shape do we need to be?

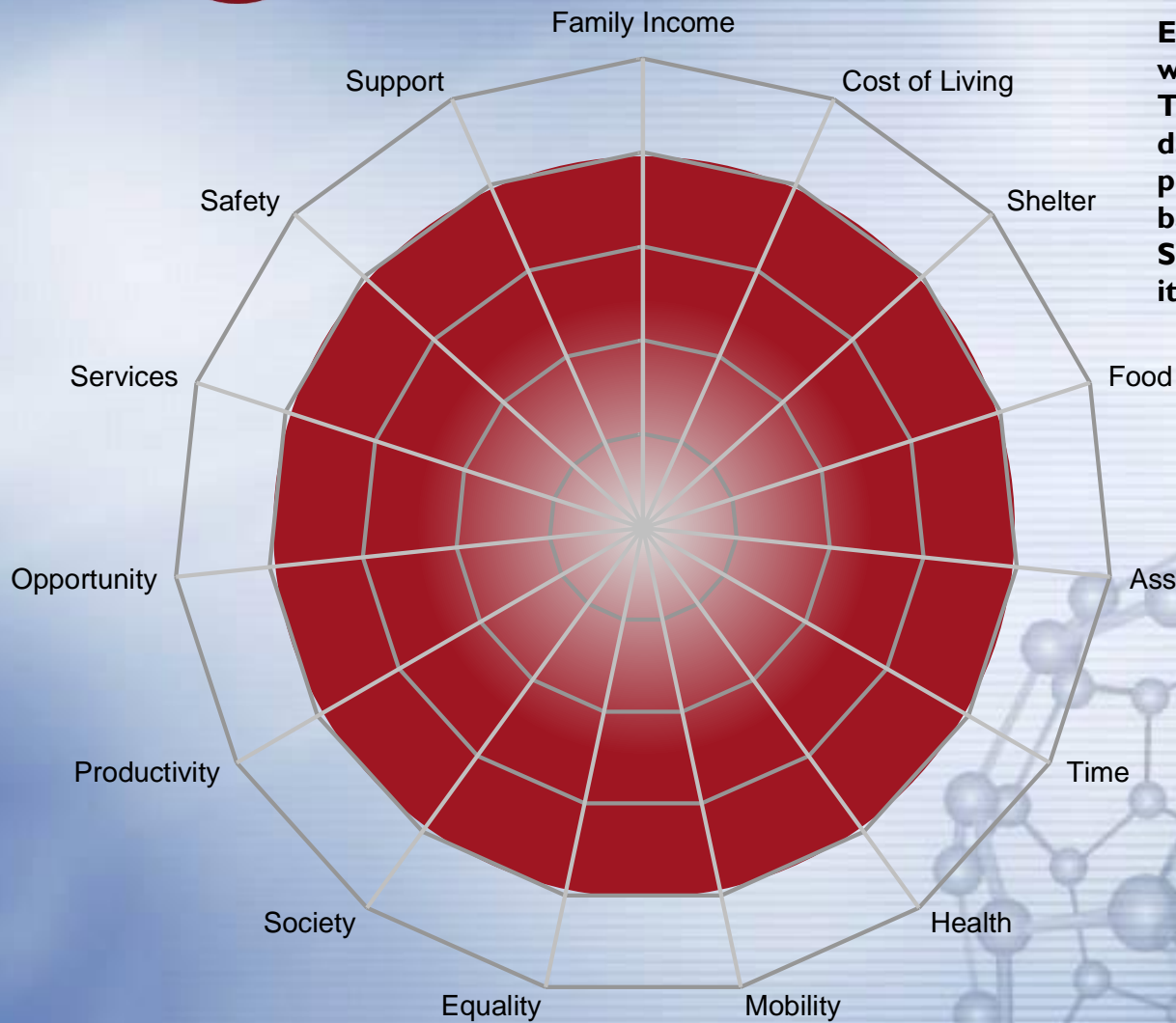


Spherical imagery and models provide stakeholders the means to test, evaluate, monitor and comprehend the complex system of the initiative



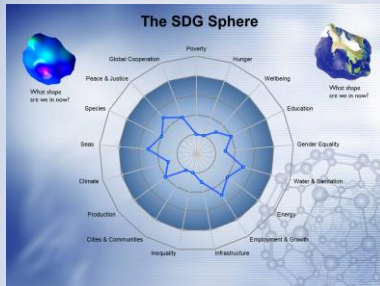


SDG – Poverty

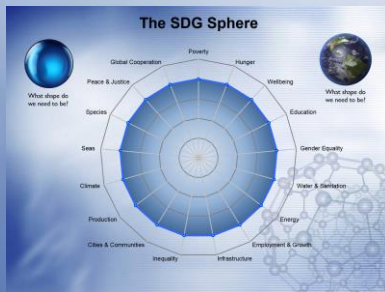


Each SDG is a sphere with its own metrics. The shape-generating data from the 17 project spheres feeds back into the global SDG sphere to depict its shape.

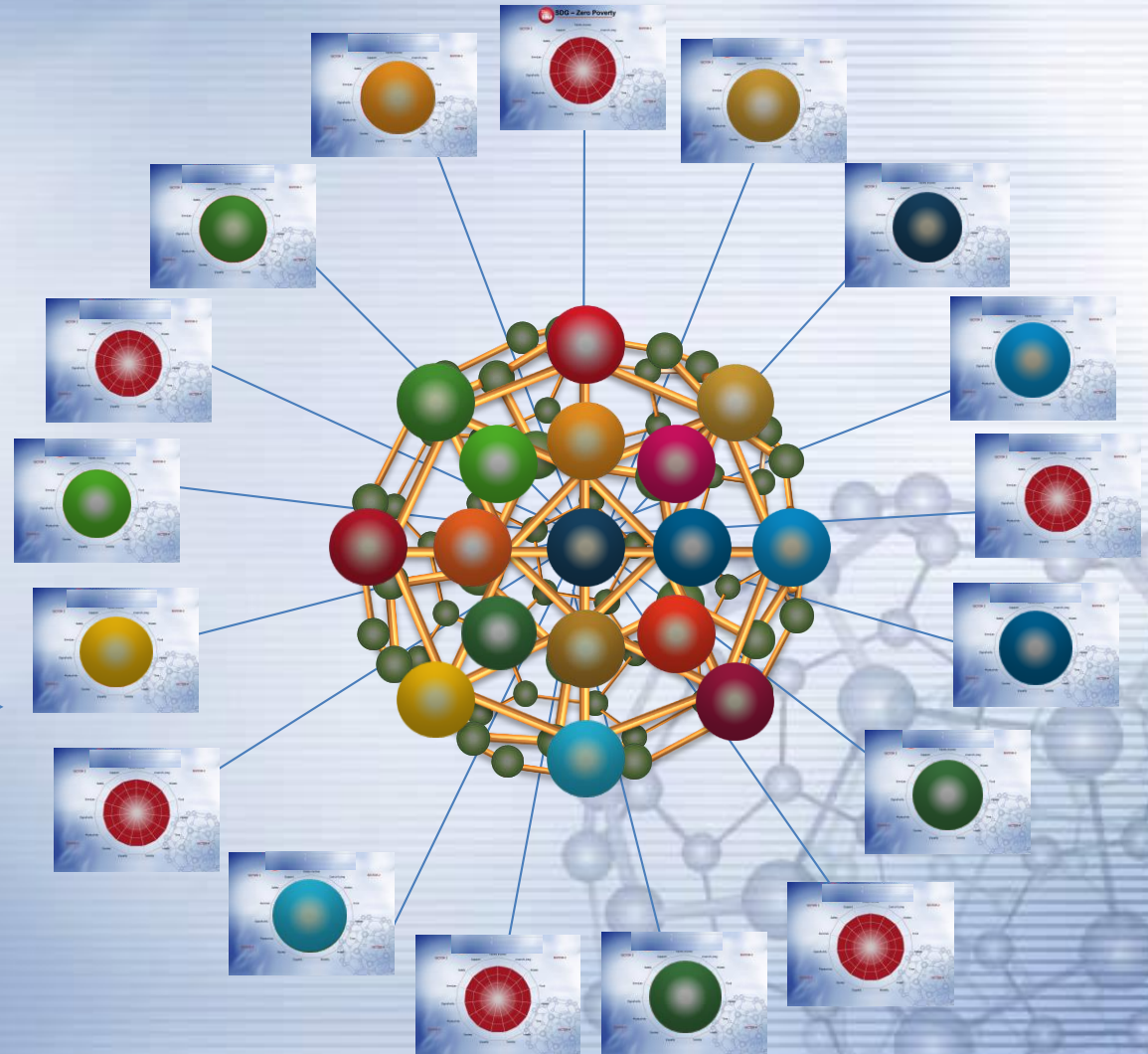
SDG Sphere Continuum



SDG Needs Assessment



SDG Strategic Plan



SDG Project Spheres



SDG Sphere Continuum

Metric

What shape are we in now?

Goal

What shape do we need to be?

Process

What do we need to do to get in shape?

Spherical models and principles integrate goals, metrics and processes into a unified field of awareness and understanding that communicates across boundaries of culture, distance, education and worldview.



The SDG Sphere

Guiding our world toward a well-rounded future

The SDG Sphere is predicated on the idea that looking at the initiative from a spherical perspective will:

- Lead to deeper, holistic, multidimensional understanding of the nature of the systems and their interrelationship.
- Provide a common verbal and visual language for learning and collaborating among all stakeholders.
- Replace outdated and limiting mechanistic and reductionist mental models, mindsets and ontologies associated with the initiative.
- Create shareable perspectives and workable models that let stakeholders see what shape the SDGs are in now, what shape they need to be, and what needs to be done to get them shape.





Needs-Driven Communication
2021 All Rights Reserved

