

ADULT SPECIAL COMPETITIONS

MISS HALL'S SPECIAL COMPETITION FOODS



SPECIAL COMPETITION FOODS IN MEMORY OF MISS LOUISE HALL

RULES FOR DIVISIONS # 130, 131, & 132

1. Contest open to Amador, El Dorado, Calaveras & Tuolumne Counties except professional bakers & professionals in Home Economics. Exhibitors must be 18 years or older to enter Senior Special Competitions unless a specific class is not offered in Junior Special Competitions. If exhibitor is 17 or under, see Jr. Special Competitions.
2. Winners will be announced after the judging is completed. Winners may be notified for publicity pictures.
3. Indication of physical damage as might occur in transit or handling will not count against the contestant by the judge.
4. Each food entry must be accompanied by the recipe. Please sign the paper and write your address plainly on the back.
5. If items to be judged are not in place by 10:30 am, then it is at the discretion of the department supervisor to accept the item.
6. There will be no public tasting following the competition due to safe food handling practices.
7. PLEASE LABEL CONTAINERS. CONTAINERS ARE TO BE PICKED UP IMMEDIATELY AFTER JUDGING.
8. All measurements must be level (not scant or heaping) cups, tablespoons or fractions of these measurements. Specify exact measurements of pan being used and exact oven temperature. Give length of baking time. All recipes become the property of the Amador County Fair.
9. Contest will be open to the public. The public will be requested to remain quiet and behind marked off section in the building. State Rule III (3) will be enforced.
10. Limit one entry per person per class.
11. Entries must not be cut, unless indicated in instructions.
12. All perishables are to be kept under refrigeration prior to delivery. Limited refrigeration space is available in the Spur Emporium kitchen.
13. Judged Danish for ribbons and then American for premiums.

Danish System of Judging

The Danish system of judging is based on established standards of quality for each type of product. In this system each exhibit is judged according to how well it meets that standard rather than how well it compares to other exhibits.

SCORE CARD

<u>Quality</u>	<u>Score</u>	<u>Ribbon</u>
1 st Group – Superior	92-100%	Blue
2 nd Group – Good	84-91%	Red
3 rd Group – Average	70-83%	White

ADULT SPECIAL COMPETITIONS

FORMS & FEES DUE BY: Friday, July 11th, 4 pm
ENTRIES IN PLACE: IN THE SPUR EMPORIUM
Cake, Pies, Cookies, Potatoes & Chicken
Saturday, August 2nd, 9:00 – 10:30 am
ENTRIES JUDGES: IN THE SPUR EMPORIUM
Saturday, August 2nd, starting at 11:00 am – May not be judged in order of classes.

DIVISION 130 - PIE, CAKE & COOKIE CONTESTS

Limit: One Entry per class per Exhibitor
Entry Fees: \$4.00 per Entry
Premium offered per class 1st - \$25

Class

1. "Peach Pie" - TRADITIONAL RECIPES ONLY. Traditional Pie. NO Premade Crust ALLOWED – Homemade Pie.
2. "Peach Pie" - CREATIVE RECIPES ONLY. GO FOR IT! **BE CREATIVE!!** NO Premade Crust ALLOWED. Homemade Pie.
3. "Carrot Cake" - TRADITIONAL RECIPES ONLY. NO PRE-PACKAGED MIXES All desserts must be homemade.
4. "Carrot Cake" CREATIVE RECIPES. GO FOR IT! **BE CREATIVE!!** All desserts must be homemade - Start with pre-packaged mix OR a creative scratch Recipe.
5. "Dirt Chocolate Cookies" – COOKIES MUST BE HOMEMADE! Any variations are permissible. All cookies must be oven baked. Be Creative!! NO PACKAGED MIXES ALLOWED. Quantity: (6)

DIVISION 131 – LOADED POTATOES SKINS

Entry Fee: \$4.00 per entry
Premium offered 1st Place - \$25

Class

1. "LOADED POTATOES SKINS"- Make this recipe your own. BE CREATIVE!!!

DIVISION 132 – MEATLOAF

Gentlemen Only

Entry Fee: \$4.00 per entry
Limit: One entry per Exhibitor
Premium offered 1st Place - \$25

Class

1. "MEATLOAF"- Make this recipe your own, BE CREATIVE WITH YOUR SEASONING & SPICES!!!

JELLY

FORMS & FEES DUE BY: Friday, July 11th 4 pm
ENTRIES IN PLACE: Monday, July 28th, 10 am – 4 pm & Tuesday, July 29th, 7 am – 9 am
in POKERVILLE HALL
ENTRIES JUDGES: August 1st, Starting at 10 am
ENTRIES RELEASED: Monday, August 4th, 10 am – 4 pm

DIVISION 133 – WINE JELLY

Entry Fee: \$4.00 per entry
Limit: One entry per Exhibitor
Premium offered per class

1st	2nd	3rd
\$20	\$15	\$10

Class

1. "WINE" JELLY made from Amador County Wine. Can be White, Red or Port. All entries in this division must be canned by the exhibitor within one year of the opening date of the Fair. A standard jar or container specifically designed for canning purposes must be used. No paraffin seals. All canning must be in sealed jars and processed in a boiling water bath. Entry must consist of ONE (1) Jar. Clear glass jars, standard ½ pint, MUST HAVE SEALED LIDS and adhere to all rules and regulations listed in the Sr. Preserved section of this book from Page 68.

ADULT SPECIAL COMPETITIONS

CRAFTS

FORMS & FEES DUE BY: Friday, July 11th, 4 pm
ENTRIES IN PLACE: Saturday, July 26th, 10 am – 4 pm in POKERVILLE HALL
ENTRIES JUDGES: Sunday, July 27th, Starting at 10
ENTRIES RELEASED: Monday, August 4th, 10 am – 4 pm

DIVISION 134 – GIFT BASKET

Entry Fee: \$4.00 per entry
Limit: One entry per Exhibitor
Premium offered 1st Place - \$25

Class

1. Themed Gift Basket – Make a Fair Theme “HAPPIEST PLACE ON DIRT!” gift basket. Use your imagination. Must be able to view the contents. Judged on overall creativity.

DIVISION 135 – WREATH

Entry Fee: \$4.00 per entry
Limit: One entry per Exhibitor
Premium offered 1st Place - \$25

Class

1. WREATH - Make a Fair Theme “HAPPIEST PLACE ON DIRT!” Wreath. Use your imagination!! You can decorate them with anything that you think would pertain to the theme. Be Creative!!! Size not to be larger than 24 x 24.

DIVISION 136 – FAIR THEME PHOTO COLLAGE

Entry Fee: \$4.00 per entry
Limit: One entry per Exhibitor
Premium offered 1st Place - \$25

Class

1. Photo Collage – Make a Fair Theme “HAPPIEST PLACE ON DIRT!” or Both, Photo Collage. No exhibit shall exceed 24” X 24”. Judged on overall creativity.

“PRETTY IN PINK AWARD RIBBON”

Memorial Craft Award In memory of Kathy Hutchison

Open to Exhibits entered in Adult Special Competition Crafts, Senior Crafts & Senior Special Education classes already entered are eligible. No entry fee is needed.

TO QUALIFY YOUR ENTRY NEEDS ONLY TO BE PINK OR HAVE PINK IN IT.

A rosette ribbon will be awarded

Sponsored by friends, co-workers and fair staff who have worked with you for many years.

FLORICULTURE

FORMS & FEES DUE BY Saturday, July 26th, 4 pm
Potted Entries Received: Wednesday, July 30th, 9 am – noon, Floriculture Building
Cut Flower Entries Received: Thursday, July 31st, 7 am – 9 am, Floriculture Building
Judged: Thursday, July 31st, 10 am
Entries Released: Monday, August 4th, 10 am – Noon

DIVISION 137 - FLORICULTURE **“HAPPIEST PLACE ON DIRT!”** **2025 FEATURE FLOWER ~ DAHLIA**

Entry Fee: \$4.00 per entry
Limit: One entry per Exhibitor
Premium offered 1st Place - \$25

Class

1. “HAPPIEST PLACE ON DIRT!” – BE CREATIVE!!! must be no larger than 18” x 18” inches. Exhibitor must design and plant in the container with purchased or homegrown flowers or plants planted in a clear vessel and must have at least three (3) distinct layers of dirt/soil. Decorations are optional. Exhibit will be judged on appearance only. Must be able to be lifted by 1 person.

ADULT SPECIAL COMPETITIONS

DIVISION 138 – SCARECROWS

FORMS & FEES DUE BY: Friday, July 11th 4 pm
ENTRIES IN PLACE: Saturday, July 26th, 10 am – 4 pm in SPUR EMPORIUM
ENTRIES JUDGES: Sunday, July 27th, (Closed Judging)
ENTRIES RELEASED: Monday, August 4th, 10 am – 4 pm

Entry Fee: \$4.00 per entry
Limit: One Entry per class per Exhibitor
Premium Offered Per Class 1st - \$25

Open to individuals, groups, businesses, clubs or organizations and families. Exhibits **MUST BE** self-supporting and fireproof. It is the responsibility of the entrant to pick up tags from Entry Department. Scarecrows should be sturdy framed and no less than 3' in height. Decorate; use your imagination.

Class

1. Traditional

Class

2. Theme – “HAPPIEST PLACE ON DIRT!”

DIVISION 139 – PLEIN AIR PAINTING

Entry Fee: \$4.00 per entry
Limit: One Entry per class per Exhibitor
Premium Offered Per Class 1st - \$25

Plein Air Painting is painting done outdoors. Painters work by natural light and are influenced by atmospheric conditions of weather and culture. This approach was made famous by the 19th century Barbizon School in France and perfected in the 20th century by the Taos Society of Artists in New Mexico.

RULES FOR PLEIN AIR PAINTING:

1. Bring in your own art supplies and be ready to paint on location, within the Fairgrounds. No matting or framing of art is allowed. Maximum size 16" x 20". Only artwork created on the Fairgrounds during the Fair will be eligible for competition. Artist's choice of acrylics, oils, pastels, watercolor, pen & ink.
2. Dates, July 31st - August 3rd. Check in at Entry Office after 10:00 am on the day you plan to paint. All exhibitors must pick up their exhibitor tag and a one-day pass at the entry office for admission. Your canvas must be stamped by Fair staff prior to beginning work. After completion of your painting, deliver to the Entry Office by Sunday, August 3rd at 2:00 pm. Artwork must be affixed to a firm support board and displayed on your own easel. Entries released on Monday, August 4th, between 10:00 am and 4:00 pm.
3. Awards presentation at 4:00 pm on Sunday, August 3rd in the Art Department. All artworks will be on display for the remainder of the Fair.

Class

1. Plein Air Painting Junior 17 & Under

Class

2. Plein Air Painting Open 18 & Over

DIVISION 140 – FAIR TIME PHOTO

Entry Fee: \$4.00 per entry
Limit: One Entry per class per Exhibitor
Premium offered per class 1st - \$25

Some of the best photos are taken at the Fair (action, animals, kids, etc.). We want to see your pictures of the 2025 Fair! Judging will be based on originality, composition, creativity and representation of the 2025 Amador County Fair. Only photos created on Fairgrounds during the Fair will be eligible for competition. Artist's choice of camera (digital, cell phone, 35 mm, disposable).

RULES FOR FAIR TIME PHOTO:

1. Adult or Junior, Amateur or Professional. An Adult or Junior Entry form must be completed at the time the photo is dropped off at the Entry Office. No pre-registration is required.
2. Bring your own camera and be ready to shoot on location, within the Fairgrounds anytime during the fair. Develop your photo (your choice). No matting or framing of photo is allowed. Minimum photo size: 5" x 7"; maximum photo size: 8-1/2" x 11". Must be printed on quality paper.
3. Check in at the Entry Office after 9:00 am on the day you plan to take your photo. After completion of your photo, deliver it to the Entry office by Sunday, August 3rd at 2:00 pm.
4. Awards presentation at 4:00 pm on Sunday, August 3rd in the Art Department. All photos will be on display for the remainder of the Fair.

Class

1. Junior 17 & under

Class

2. Adults 18 & Over

ADULT SPECIAL EDUCATION

The Amador County Fair supports the concept that no physical or mental disability need limit the human potential to create. The following Departments have offered the opportunity to exhibitors who have assisted works. Disabled exhibitors who produce works unassisted may compete in each Department's individual competition. Refer to noted pages for more information regarding the class. Use a separate entry form for each Department's entries. Open to Amador, Calaveras, El Dorado, and Tuolumne Counties.

FORMS & FEES DUE BY: Friday, July 11th, 6 pm
Entries in Place: Please see Pages listed by classes for
entries Received/Judged dates
POKERVILLE HALL
Entries Released: Monday, August 4th, 10 am – 4 pm

DIVISON 144 – 18 YEARS AND OVER

No Entry Fee

Limit: Two entries per class Per Exhibitor
Ribbons Only - Judged Danish

Class

1. Art (see Page 80-84)
2. Photography (see Page 85-90)
3. Crafts (see Page 77-79)

Class

4. Clothing & Textiles (see Page 73-77)
5. Baked Foods (see Page 67-69)
6. Group Project

THE ARC OF AMADOR & CALAVERAS COUNTIES

Mission Statement

The Arc of the United States advocates for the rights and full participation of all children and adults with intellectual and developmental disabilities. Together with our network of members and affiliated chapters, we improve systems of supports and services; connect families; inspire communities and influence public policy.

Get involved with your community Arc program.

1977

The Arc of Amador and Calaveras Counties

75 Academy Drive
Sutter Creek, CA 95685
(209) 267-5978

REMEMBER TO THANK YOUR SPONSORS!!!

FEATURE EXHIBITS

FEATURE EXHIBITS

Note: Feature Booths are offered to the previous exhibitor for renewal first.
If there is a non-renewal, exhibit booths are offered on a first come basis.

FORMS & FEES DUE BY: Friday, May 3rd, 4 pm

Booths can be started on Tuesday, July 29th – and must be completed by Wednesday, July 30th, 9 pm

EXHIBITS JUDGED ON: Thursday, July 31st, 10 am

Entries Released: Monday, August 4th, 10 am – 4 pm

- A. The Feature Exhibit Booth shall be limited to one (1) entry per Exhibitor/Group.
- B. Interactive exhibits are most appealing to the public.
- C. The use of the Fair Theme is encouraged – “HAPPIEST PLACE ON DIRT!”
- D. All Feature Exhibitors shall supply and use timers, power strips/surge protectors to manage all display power, electrical and lighting component needs.
- E. All materials used must be Fireproof or sprayed with Fire Retardant.
- F. Booth materials must be contained within the area of the 10’ x 10’ booth, cannot exceed 9’ 6” in depth (front to back).
- G. All Exhibitors must respect the physical and visual space of adjacent exhibits and vendors. Failure to do so may result in a score reduction.
- H. All Signage must be included upon completion of booth.
- I. Exhibitors must make arrangements to replace any pamphlets or brochures and all fruits and vegetables that deteriorate during the Fair. Exhibitors may have access to their exhibits from 8 AM to 10 AM daily during Fair.
- J. Superintendents reserve the right to reject any entry and/or display accessory it deems objectionable, or inappropriate – this includes politics.
- K. IT IS THE RESPONSIBILITY OF THE GROUP OR ORGANIZATION TO PICK UP THEIR BOOTH TAGS FROM THE ENTRY OFFICE.
- L. Booths must be dismantled and removed from the building Monday, August 4th, 2025, 10 AM – 4 PM.
- M. Premium checks will be held until booth are dismantled and area cleaned to the satisfaction of the Superintendents.

DIVISION 145 – FEATURE EXHIBITS

American System of Judging

Entry Fee: \$25.00

Premiums Offered Per Class

COMMUNITIES

1 st	2 nd	3 rd	4 th	5 th
\$100	\$75	\$50	\$25	\$10

ORGANIZATIONS

1 st	2 nd	3 rd	4 th	5 th
\$100	\$75	\$50	\$25	\$10

Class

1. Communities of Amador County

Class

2. Organizations of Amador County

SCORECARD FOR FEATURE EXHIBIT

Quality	30%
Educational Value	20%
Theme	20%
Decoration & Arrangement	15%
Creativity	10%
Variety	5%
Total	100%

CREATIVE & HOME ARTS

DEPARTMENT SUPERVISOR

DIANNE BENNETT

Open to Amador, Calaveras, El Dorado & Tuolumne Counties

SWEEPSTAKES FOR BAKED FOODS

Sponsored by Frank A

1st - \$25

2nd - \$15

3rd - \$10

BAKED FOODS & CONFECTIONS

FORMS & FEES DUE BY: Friday, July 11th, 4 pm

**Entries in Place: Monday, July 28th, 3 pm – 6 pm & Tuesday, July 29th, 7 am – 9 am
in POKERVILLE HALL (Open Judging)**

Entries Judged: Tuesday, July 29th, 10 am (Open Judging)

Entries Released: Monday, August 4th, 10 am – 4 pm

BEST OF SHOW AWARD

Premium sponsored by In Memory of Laura Spinetta

Entry Fee: \$2.00

Limit: 2 Entries per class per Exhibitor

Ribbons – 1st thru 3rd

DIVISION 150 - BAKING POWDER BREAD

(1/2 Loaf – the cut to display top & bottom, approx. ½ lb.)

Class

1. Banana Bread
2. Biscuits (plain white, 4)
3. Indian Fry Bread (2)
4. Corn Bread
5. Zucchini Bread

Class

6. Nut Bread
7. Coffee Cake
8. Muffins (4)
9. Any other not listed above, specify on entry form

DIVISION 151 - YEAST BREADS

(1/2 Loaf – the cut to display top & bottom, approx ½ lb.)

Class

1. Cinnamon Rolls (4)
2. Rolls (4)
3. Sweet Rolls (4)
4. Sweet Bread or Raisin Bread
5. Whole Wheat Bread (over ½ whole wheat flour)

Class

6. White Bread
7. French Bread
8. Serbian Cheese Bread
9. Muffins (4)
10. Any other not listed above, specify on entry form

DIVISION 152 - LAYER CAKES & CUPCAKES, FROSTED

(Cakes – ½ cake; Cupcakes – 4)

BEST OF DIVISION

Award sponsored by Frank A

Class

1. Chocolate, frosted
2. Upside Down Cake

Class

3. Cupcakes
4. Any other not listed above; specify on entry form

DIVISION 153 - LOAF OR POUND CAKE

(1/3 Cake)

Class

1. Vegetable
2. Chiffon
3. Banana
4. Bundt
5. Fruit
6. Pound (plain)
7. Potato

Class

8. Prune
9. Spice
10. Sponge
11. Cheesecake
12. Any other not listed above, specify on entry form

CREATIVE & HOME ARTS

DIVISION 154 - COOKIES & BROWNIES

(All cookies must be in small baggies; # of cookies = 6)

Class

1. Bar – fruit, nuts or both, unfrosted
2. Bar – fruit, nuts or both, frosted
3. Chocolate Chip
4. Drop – plain or fruit
5. Drop – nut
6. Fancy
7. Filled
8. Gumdrop
9. Icebox
10. Macaroon
11. Peanut Butter

Class

12. Pressed
 13. Rolled - frosted or unfrosted
 14. Biscotti
 15. Oatmeal
 16. Brownies - unfrosted
 17. Brownies - frosted
 18. Brownies - light, unfrosted
 19. Brownies - light, frosted
 20. Stuffed Pastry
 21. Cake or Cookie Pops
 22. Any other not listed above; specify on entry form
-

DIVISION 155 - PIES & COBBLERS

(One 4" to 9" pie)

Class

1. Apple, two crust
2. Berry, two crust
3. Any other two-crust pie not listed above; specify
4. Lemon, one crust

Class

5. Sweet Potato pie, one crust
 6. Any other one-crust pie not listed above; specify
 7. Cobbler, any fruit of choice
-

DIVISION 156 - CONFECTIONS

(1/4 pound)

Class

1. Caramels
2. Chocolate, dipped
3. Candied peel
4. Divinity
5. English Toffee
6. Fruit, candies
7. Rocky Road

Class

8. Fudge
 9. Peanut Brittle
 10. Pecan Roll
 11. Sugar Nuts
 12. Truffles
 13. Truffles with Liqueur
 14. Any other not listed above; specify on entry form
-

DIVISIONS 157 – 159

Not Eligible for Best of Show

Entry Fee: \$2.00

Limit: 2 Entries per Class per Exhibitor

Ribbons – 1st thru 3rd

DIVISION 157 - DECORATED CAKES

A Styrofoam or cardboard form may be used, provided the shape is one that could reasonably be achieved through baking. Cakes to be home decorated by the exhibitor.

Class

1. Decorated Cakes - Special Occasions
 2. Decorated Cakes - 2025 Fair Theme - "HAPPIEST PLACE ON DIRT!"
-

CREATIVE & HOME ARTS

DIVISION 158 - CONTAINER & CONTENTS

Class

1. COOKIE JAR – 4 kinds of homemade cookies, 4 each (16 total) in transparent container with lid, will be judged on originality and contents of container. (Put one additional of each cookie type, in a separate baggie and tape to jar for judges to sample).

Class

2. DECORATED CANDY BOX WITH CANDY - One entry per class. Open to individuals, families or groups. Candies must fill the box. There must be at least 4 different types of homemade candy. The box must have a removable/replaceable lid. Decorations may be glued or tied to box. No stands, trays or bases allowed. Bring one of each kind of candy on a small plate for judges to taste.

CANDY BOX SCORECARD

Appearance & Originality	40%
Appetite, Texture, Flavor	40%
<u>Appeal</u>	20%
TOTAL	100%

DIVISION 159 - PICNIC BASKET

1. PICNIC BASKET – Fair Theme – “HAPPIEST PLACE ON DIRT!” Basket to contain 2 varieties each of bread, jam and jelly. Must contain picnic items for two: Plates, cups, utensils, tablecloth and napkins. Items will not be tasted; judging will be on appearance and originality. Judging will be American system. All other rules pertaining to the Home Arts Department apply.

NOT ELIGIBLE FOR BEST OF SHOW

PRESERVED & DRIED

Open to Amador, Calaveras, El Dorado & Tuolumne Counties

SWEEPSTAKES FOR PRESERVED & DRIED FOODS sponsored by Frank A

1st - \$25 2nd - \$15 3rd - \$10

Entry Fee: \$2.00

Limit: 2 DIFFERENT entries per class per Exhibitor

Ribbons – 1st thru 3rd

BEST OF SHOW AWARD

Award sponsored by Teresa's Place, Jackson



PRESERVED & DRIED RULES:

1. All entries in these divisions must be home prepared and canned or packed by the exhibitor within one year of the opening date of the Fair. Specify on entry form the type of product and process (i.e. apricot jam, pectin method, boiling-water bath). All products being considered for premium awards, which have not otherwise been eliminated from consideration, will be opened.
2. ENTRIES: Each entry must consist of one (1) jar. Judged entries can be picked up at the end of the Fair. Each entry must be from a different batch, or the same product preserved by a different method. **No products requiring refrigeration will be accepted.**
3. LABELING: LABELING: All entries must be labeled securely on top of all jars. Label must include: the product name, the date of preservation, the canning method used (Example: use 'WB' for water bath canning, 'ASC' for atmospheric steam canning, and 'PC' for pressure canning), and the Division and Class. **The name of the exhibitor must NOT be on the label.**

CREATIVE & HOME ARTS

PRESERVED & DRIED RULES CONTINUED:

4. CONTAINERS: Standard jars (containers specifically designed for canning purposes) must be used. New lids and screw rings must be used on all jars so designed. Glass-topped containers, such as Weck canning jars, and Tattler Reusable Canning Lids will be accepted. Fruits, vegetables & pickles may be in 1-pint or quart jars. Jams, jellies, preserves or marmalades recommended to be in 4 oz., ½-pint or 1-pint jars. No paraffin seals. All canning must be in sealed jars, unless otherwise stated.
5. RAW UNFLAVORED HONEY: Should not be heat-processed; state primary flavor.
6. DRIED PRODUCTS: Must be in jars.
7. HEALTH REQUIREMENTS FOR PRESERVED FOODS: All low-acid foods (all vegetables, meats, poultry and fish) must be canned under pressure. Low-acid fruit, such as figs, must be made more acidic by adding lemon juice as directed in the *USDA Complete Guide to Home Canning*. High-acid foods, including acidified tomatoes, fruits, pickles and relishes, may be canned in boiling water bath canner or atmospheric steam canner. **Food preserved using the open-kettle, inversion, oven or microwave methods of canning will not be accepted.** Dehydrated meats, including jerky, must have a recipe attached to entry indicating temperature used to dry meats. USDA research has shown that dried meats must reach a temperature of 165° to kill bacteria.

LIST OF RECOMMENDED CONTAINERS:

- Fruits & Vegetables – clear glass, pint, wide- or narrow-mouth jars.
- Jellies, Jams, Preserves & Fruit Spreads – clear glass, standard ½-pint jars (recommended size) with sealed lids.

TIPS TO PONDER

The difference between Jams, Preserves, Jellies, and Fruit Spreads

- **Jams** are made from real mashed fruits and sugar, and they sometimes have added pectin.
- **Preserves** are made with whole fruit or coarse pieces, sugar and usually pectin.
- **Marmalades** are made with pulps and peels from fruit, sugar and usually pectin.
- **Fruit Spreads** (or spreadable fruit) are 100% fruit with no sugar added, although they usually have added pectin.
- **Jellies** are made from strained fruit juice, sugar and sometimes pectin. Jellies have a clear, shimmery appearance.

Reference – Quick Cooking Magazine

PRESERVED

FORMS & FEE DUE BY: Friday, July 11th, 4 pm

Entries in Place: Monday, July 28th, 3 – 6 pm & Tuesday, July 29th, 7 am – 9 am in POKERVILLE HALL

Entries Judged: Friday, August 1st, 10 am (Open Judging)

Entries Released: Monday, August 4th, 10 am – 4 pm

Entry Fee: \$2.00

Limit: 2 Different Batch entries per class per Exhibitor

Ribbons – 1st thru 3rd

DIVISION 160 - “WEIGHT WATCHERS”

Glass Container – 1/2 Standard Pint Recommended

Class

1. Bottled Juice
2. Canned Fruit
3. Vegetables

Class

4. Jam
5. Jelly
6. Others

DIVISION 161 - BOTTLED JUICES

Glass Container – 1/2 Standard Pint Recommended

Class

1. Berry Juice
2. Fruit Juice
3. Grape Juice

Class

4. Tomato Juice
5. Any other not listed above; specify on entry form

DIVISION 162 - CANNED FRUIT

Glass Container – 1/2 Standard Pint Recommended

Class

1. Applesauce
2. Apricots, whole or halves
3. Cherries
4. Grapes

Class

5. Peaches, any
6. Pears, any
7. Plums
8. Any other not listed above; specify on entry form

CREATIVE & HOME ARTS

DIVISION 163 – CANNED VEGETABLES & MEATS

Glass Container – 1 Standard Pint Recommended

Class

1. Tomatoes
2. Vegetables, any other

Class

3. Any other not listed above; specify on entry form

DIVISION 164 – PICKLES & RELISHES

Glass Container – 1 Standard Pint Recommended

BEST OF DIVISION

\$50 Premium sponsored by The Willow Springs Whist Card Club in Memory of Doris Helms & Sue Freeman

Class

1. Bread and Butter Pickles
2. Chili Sauce
3. Chow Chow
4. Chutney
5. Cucumbers, sour
6. Cucumbers, sweet
7. Dill Pickles
8. Green Tomato Pickles
9. India Relish

Class

10. Mixed Pickles
11. Olives
12. Tomato Catsup
13. Wax Peppers
14. Any other pickle not listed above; specify on entry form
15. Any other relish not listed above; specify on entry form

DIVISION 165 – JAMS

Glass Container – 1/2 Standard Pint Recommended

Class

1. Apricot
2. Apricot and Pineapple
3. Blackberry
4. Boysenberry
5. Fig
6. Grape
7. Peach

Class

8. Pear
9. Plum
10. Raspberry
11. Strawberry
12. Pepper Jam
13. Any combination of two of the above flavors
14. Any other not listed above, specify on entry form

DIVISION 166 - JELLIES

Glass Container – 1/2 Standard Pint Recommended

Class

1. Apple
2. Blackberry
3. Grape
4. Plum
5. Pomegranate

Class

6. Quince
7. Strawberry
8. Pepper Jelly
9. Any combination of two of the above flavors
10. Any other not listed above; specify on entry form

DIVISION 167 – PRESERVES

Glass Container – 1/2 Standard Pint Recommended

Class

1. Apricot
2. Cherry
3. Peach
4. Pear

Class

5. Plum
6. Strawberry
7. Any other not listed above; specify on entry form

DIVISION 168 – MARMALADES & BUTTERS

Glass Container – 1/2 Standard Pint Recommended

Class

1. Apple Butter
2. Orange Marmalade
3. Any other Butter not listed above, specify on entry form

Class

4. Any other Marmalade not listed above; specify on entry form

CREATIVE & HOME ARTS

DIVISION 169 - FRUIT SYRUPS

Glass Container – 1/2 Standard Pint Recommended

Class

1. Blackberry
2. Strawberry

Class

3. Any other not listed above; specify on entry form

DIVISION 170 – MISCELLANEOUS

Glass Container – 1/2 Standard Pint Recommended

Class

1. Salsa
2. Vinegar – specify on entry form
3. Honey
4. BBQ Sauce

Class

5. Olive Oil
6. Mustard
7. Ketchup
8. Any other not listed above; specify on entry form

DRIED FOODS

FORMS & FEE DUE BY: Friday, July 11th, 4 pm

Entries in Place: Monday, July 28th, 3 – 6 pm & Tuesday, July 29th, 7 am – 9 am in POKERVILLE HALL

Entries Judged: Friday, August 1st, 10 am (Open Judging)

Entries Released: Monday, August 4th, 10 am – 4 pm

Entry Fee: \$2.00

Limit: 2 Entries per class per Exhibitor

Ribbons – 1st thru 3rd

DRIED FOODS RULES

A. Exhibits must be accurately labeled, indicating variety of fruit, vegetables, meat or seasoning and method used in preparation (dehydrator, oven, sun, sulphured, etc.) Label is to be taped to the bottom of the jar. See sample under Preserved Foods.

B. Meats: Including jerky, must have recipe attached to entry indicating temperature used to dry meats, USDA research has shown that dried meats must reach a temperature of 165° F to kill bacteria.

C. Dried foods must be packaged in airtight glass jars stated in each division.

D. The exhibitor must dry all entries in these divisions within one year of the opening date of the Fair.

DRIED FOODS SCORECARD

Attractiveness	30%
Color	20%
Smell	30%
Texture	20%
TOTAL	100%

DIVISION 171 - DRIED FOODS

Pint Jar Display Recommended

Class

1. Apples; quarters or rings
2. Apricots; specify variety on entry form
3. Figs; specify variety on entry form
4. Grapes; specify variety on entry form
5. Peaches; specify variety on entry form
6. Pears; specify variety on entry form

Class

7. Prunes; specify variety on entry form
8. Any herb or seasoning; specify on entry form
9. Dried Food; any other not listed above, specify variety on entry form
10. Any meat or fish; specify variety on entry form

CREATIVE & HOME ARTS

CLOTHING & TEXTILES

Open to Amador, Calaveras, El Dorado & Tuolumne Counties

FORMS & FEE DUE BY: Friday, July 11th, 4 pm
Entries in Place: Saturday, July 26th, 10 am – 4 pm in POKERVILLE HALL
Entries Judged: Sunday, July 27th, 9 am (Open Judging)
Entries Released: Monday, August 4th, 10 am – 4 pm

SWEEPSTAKES FOR CLOTHING & TEXTILES *Sponsored by Frank A*

1st - \$25 2nd - \$15 3rd - \$10

Entry Fee: \$2.00

Limit: 2 Entries per Class per Exhibitor

Ribbons – 1st thru 3rd

CLOTHING & TEXTILES RULES:

- A. The exhibitor must have home produced all entries in this Department within one year of the opening date of the Fair to be eligible for premium awards.
- B. Cleaned and Pressed: Soiled articles will be disqualified, and will not be displayed.
- C. Other: Items that have a class definition may NOT be entered in this division.
- D. Item must have been completed within the last year.

BEST OF SHOW

Sewing Divisions 172 & 173

Premium sponsored by In Memory of Laura Spinetta

BEST OF SHOW

Knitting & Crocheting - Divisions 174 & 175

Award sponsored by Care Collective Therapy

BEST OF SHOW

Stitchery - Divisions 176 & 177

Award sponsored by OPEN

BEST OF SHOW

Afghans - Division 182

Award sponsored by OPEN

BEST OF SHOW

Weaving & Hand Spun Yarn Articles

Divisions 179 & 180

Award sponsored by Del Oro Spinners & Weavers Guild

DIVISION 172 - SEWING-WEARING APPAREL

Class

- 1. Baby outfit
- 2. Vest
- 3. Pants or Shorts or Capris
- 4. Shirt or Blouse

Class

- 5. Dress
- 6. Coat or Jacket, lined or unlined
- 7. Costume
- 8. Any other not listed above; specify on entry form

DIVISION 173 - SEWING - OTHER

Class

- 1. Placemats with napkins, set of two
- 2. Pillow
- 3. Blanket (not quilt specifications)

Class

- 4. Christmas item
- 5. Toy
- 6. Any other not listed; specify on entry form

DIVISION 174 - CROCHETED

BEST OF DIVISION

Award sponsored by A Cup of Yarn

Class

- 1. Lace, 1 yd. minimum, separate or attached to item
- 2. Doily, under 15"
- 3. Doily, 16" or larger
- 4. Household items (tablecloth, pillow covers, etc.)

Class

- 5. Baby garments
- 6. Vest, Stole or poncho
- 7. Sweater, cardigan or pullover
- 8. Any other not listed above; specify on entry form

CREATIVE & HOME ARTS

DIVISIONS 175 – KNITTED

BEST OF DIVISION

Award sponsored by A Cup of Yarn

Class

1. Baby garments
2. Sweater, child
3. Baby accessories
4. Sweater, cardigan, adult
5. Sweater, pullover, adult
6. Stole, poncho, shawl
7. Hat

Class

8. Socks
9. Accessories
10. Machine knits
11. Original design
12. Scarves
13. Any other not listed above; specify on entry form

DIVISION 176 - CREWEL-EMBROIDERY, BARGELLO, NEEDLEPOINT & CANDLEWICK

Class

1. Tablecloth, card table size or larger
2. Pillow
3. Wall hanging, framed or unframed, under 9"
4. Wall hanging, framed or unframed, 9" to 16"
5. Wall hanging, framed or unframed, over 16"

Class

6. On wearing apparel (apparel need not be made by exhibitor) – machine or hand embroidered
7. Picture
8. Any other - Bargello, Needlepoint, Candlewick, Embroidery, Crewel

DIVISION 177 - CROSS STITCH

Class

1. Counted cross stitch, any item
2. Stamped, any item
3. Counted cross stitch, original design, any item
4. Wall hanging, framed or unframed, under 9"

Class

5. Wall hanging, framed or unframed, 9" to 16"
6. Wall hanging, framed or unframed, over 16"
7. Christmas item
8. Any other not listed above; specify on entry form

DIVISION 178 – AFGHANS

BEST OF DIVISION

\$50 Premium sponsored by The Willow Springs Whist Card Club in Memory of Doris Helms & Sue Freeman

Class

1. Knitted, baby afghan
2. Knitted, pieced
3. Knitted, other than listed, specify on entry form
4. Crocheted, baby afghan
5. Crocheted, granny square

Class

6. Crocheted, ripple
7. Crocheted, pieced
8. Crocheted, other than listed; specify on entry form

DIVISION 179 – WEAVING

Class

1. Baskets
2. Article of clothing
3. Shawls and scarves
4. Blankets, any size

Class

5. Rugs and wall hangings
6. Household items
7. Any other not listed above; specify on entry form

DIVISION 180 - HAND SPUN YARN ARTICLES

BEST OF DIVISION

Award sponsored by Lissy's Zoo

Class

1. Article of clothing, knitted
2. Article of clothing, crocheted
3. Article of clothing, hand-woven
4. Accessories
5. Article 50% = hand-spun and commercial yarn

Class

6. Skein, single ply
7. Skein, wool, 2 or more ply
8. Skein, any other fiber, 2 or more ply
9. Skein, novelty at least 50% hand-spun
10. Any other not listed above; specify on entry form

CREATIVE & HOME ARTS

DIVISION 181 – MISCELLANEOUS

Class

1. Hooked rug – from kit or original design, 4' x 4'
2. Felted items
3. Tatted, any item

Class

4. Combination of any one item to be judged on the techniques from the Clothing & Textiles Department, such as sewing and cross-stitch
5. Appliquéd item – article may be purchased, appliqué must be sewn not glued

DIVISION 182 - SENIOR CITIZEN (65 & OVER)

Class

1. Any crocheted item
2. Any knitted item

Class

3. Any wearing apparel, not knitted or crocheted
4. Any home furnishing, not knitted or crocheted

DIVISION 183 - "FAIR THEME" ITEMS

"HAPPIEST PLACE ON DIRT!"

Entry Fee: \$2.00

Limit: Two (2) Entries per class per Exhibitor

Ribbons – 1st thru 3rd

Items must depict Fair theme

Class

1. Wearing apparel
2. Quilts & Afghans

Class

3. Needlecraft
4. Any other not listed; specify on entry form

QUILTS

Open to Amador, Calaveras, El Dorado & Tuolumne Counties

FORMS & FEE DUE BY: Friday, July 11th, 4 pm

Entries in Place: Saturday, July 26th, 10 am – 4 pm in POKERVILLE HALL

Entries Judged: Sunday, July 27th, 9 am (Open Judging)

Entries Released: Monday, August 4th, 10 am – 4 pm

QUILTS

***Due to space constraints, any non-placing "KING SIZE" Quilts may not be hung, but displayed to the best of our ability.
Thank You for Your Understanding.***

QUILTING RULES:

- A. The exhibitor must have home produced all entries in this Department within one year of the opening date of the Fair to be eligible for premium awards.
- B. Quilts: All quilts must have a 4-inch sleeve for hanging and display purposes.
- C. Cleaned and Pressed: Soiled articles will be disqualified, and will not be displayed.
- D. **Quilts need to be picked up Monday, August 4, 2025 10 am - 4 pm**
- E. Group Quilts: If any part of the quilt (piecing, quilting, appliqueing, etc.) was completed by anyone other than the exhibitor in whose name the quilt was entered.
- F. Perimeter: The perimeter is the outer edge measurement of the quilt.
- G. Quilt Sizes-
 1. Small- No larger than 216"
 2. Medium: 217"-299"
 3. Large: 300"
- H. Item must have been completed within the last year.

QUILT JUDGING CRITERIA:

1. Workmanship (including finishing)
2. Design Elements (balance, color, contrast & unity)
3. Technical Elements (technique or multiple techniques)

CREATIVE & HOME ARTS

BEST OF SHOW

Quilts - Division 190-198

Premium sponsored by SIERRA GOLD QUILTERS' GUILD

Entry Fee: \$5.00

Limit: 2 Entries per Class per Exhibitor

Ribbons – 1st thru 3rd

DIVISION 190 – APPLIQUE QUILTS

Must be mainly (51%) applique and may be based either on traditional or innovative patterns and settings

Premium sponsored by Motherlode Quilters' Guild

Class

1. Small
2. Medium

Class

3. Large
 4. Group
-

DIVISION 191 – ART QUILTS

Must be your original design meant to be used as a work of art and is made entirely by the entrant

Premium sponsored by Sierra Gold Quilters' Guild

Class

1. Small
2. Medium

Class

3. Large
-

DIVISION 192 – MINIATURE QUILTS

Large scale quilts made in a miniature size consisting of traditional piecing and/or applique blocks, completed/repeated blocks are usually 3"-4" and overall quilt perimeter is no larger than 96"

Premium sponsored by Motherlode Quilters' Guild

Class

1. Individual

Class

2. Group
-

DIVISION 193 – MIXED TECHNIQUE QUILTS

Includes pieced and applique and may include embellishments

Premium sponsored by Sierra Gold Quilters' Guild

Class

1. Small
2. Medium

Class

3. Large
 4. Group
-

DIVISION 194 – PIECED QUILTS

Should be mainly (51%) pieced and may be either on traditional or innovative patterns and settings

Premium sponsored by Motherlode Quilters' Guild

Class

1. Small
2. Medium

Class

3. Large
 4. Group
-

DIVISION 195 – OTHER QUILTED ITEMS

Includes but is not limited to wearable art, accessories and home use items such as vests, jacksts, purses, hats, table runners, tree skirts, etc

Premium sponsored by Sierra Gold Quilters' Guild

Class

1. Garments
2. Accessories

Class

3. Machine Embroidered Quilted Items
 4. Other Quilted Items
-

DIVISION 196 - HANDPIECED AND/OR HANDQUILTED QUILTS

Premium sponsored by Motherlode Quilters' Guild

Class

1. Small
2. Medium

Class

3. Large
4. Group

CREATIVE & HOME ARTS

DIVISION 197- NOVICE QUILTER

Having quilted 1 year or less

BEST OF DIVISION

\$50 Premium sponsored by The Willow Springs Whist Card Club in Memory of Doris Helms & Sue Freeman

Class

1. Small
2. Medium

Class

3. Large
 4. Group
-

DIVISION 198 - ORIGINAL DESIGN

Premium sponsored by Sierra Gold Quilters' Guild

Class

1. Small
2. Medium

Class

3. Large
 4. Group
-

HOBBIES & CRAFTS

Open to Amador, Calaveras, El Dorado & Tuolumne Counties

FORMS & FEES DUE BY: Friday, July 11th, 4 pm

Entries in Place: Saturday, July 26th, 10 am – 4 pm in POKERVILLE HALL

Entries Judged: Sunday, July 27th, 10 am (Closed)

Entries Released: Monday, August 4th, 10 am – 4 pm

SWEEPSTAKES FOR HOBBIES & CRAFTS

Sponsored by Frank A

1st - \$25

2nd - \$15

3rd - \$10

BEST OF SHOW

Award sponsored by Amethyst Angus - Ralph & Susie Clark

Entry Fee: \$2.00

Limit: 2 Entries per class per Exhibitor

Ribbons – 1st thru 3rd

ITEM MUST HAVE BEEN COMPLETED WITHIN THE LAST YEAR

DIVISION 200 - DECORATIVE PAINTING

Class

1. On wearing apparel
2. On wood item
3. On metal item

Class

4. On cloth item, (lampshade, rug, etc.)
 5. Any other not listed above; specify on entry form
-

DIVISION 201 – WOODWORK

BEST OF DIVISION

Award sponsored In memory of Ken Kobernik

Class

1. Wood carving
2. Furniture
3. Toys
4. Lathe turned pieces

Class

5. Woodwork, scroll saw work, laser work, decorative or functional
 6. Any other not listed above; specify on entry form
-

DIVISION 202 – GLASS

Class

1. Stained
2. Painted

Class

3. Any other not listed above; specify on entry form
-

CREATIVE & HOME ARTS

DIVISION 203 – CERAMICS

Class

1. Amateur Ceramic, any item

Class

2. Professional Ceramic, any item
-

DIVISION 204 – DIAMOND ART

Class

1. Diamond Art, under 12"x12"
2. Diamond Art, between 12"x12" to 24"x24"

Class

3. Diamond Art, over 24"x24"
-

DIVISION 205 – SPECIAL CREATIONS

Class

1. China Painting, any item
2. Clocks
3. Miniature Room Setting

Class

4. Bridal
 5. Graphic or Digital Art
 6. Any other not listed above; specify on entry form
-

DIVISION 206 – BEADED ITEMS

Class

1. Beaded Earrings
2. Beaded Necklace or Bracelet, Bead Stringing
3. Beaded Necklace or Bracelet, Bead Weaving

Class

4. Bead Embroidery
 5. Sculptural/Dimensional Beadwork
 6. Any other not listed above; specify on entry form
-

DIVISION 207 – HOLIDAY CREATIONS

Class

1. Centerpiece, holiday
2. Christmas Ornaments, painted
3. Christmas Ornaments, other
4. Stockings
5. Holiday Decorations, Christmas

Class

6. Holiday Decorations, any other not listed
 7. Easter Eggs, any kind
 8. Wreath, Christmas
 9. Wreath, holiday other
 10. Any other holiday creation
-

DIVISION 208 – MISCELLANEOUS

Class

1. Candle Making, homemade
2. Soap Making, homemade
3. Metals, any item
4. Leatherwork, any item
5. Dolls

Class

6. Multi Media, Video, Power Point – Presentation of Fair Theme or Amador County, 5 minute max.
 7. Scrap Book- Any Subject-Limited to Two (1) sided pages per exhibitor
 8. Any other craft not listed above; specify on entry form
-

DIVISION 209 – BIRD HOUSES

Class

1. Decorative, wood
2. Decorative, other

Class

3. Functional
 4. Any other (i.e. Bat Houses, Butterfly, etc.)
-

“PRETTY IN PINK AWARD RIBBON”

Memorial Craft Award In memory of Kathy Hutchison

Open to Exhibits entered in Adult Special Competition Crafts, Senior Crafts & Senior Special Education classes already entered are eligible. No entry fee is needed.

TO QUALIFY YOUR ENTRY NEEDS ONLY TO BE PINK OR HAVE PINK IN IT.

A rosette ribbon will be awarded

Sponsored by friends, co-workers and fair staff who have worked with you for many years.

CREATIVE & HOME ARTS

DIVISION 210 – GOURDS – NOVICE & INTERMEDIATE

(Open to Residents of California)

Class

1. Novice, Painted/Colored, multi medium
2. Novice, Carved/Filigree/Sculpting
3. Novice, Any Other

Class

4. Intermediate, Painted/Colored, multi medium
 5. Intermediate, Carved/Filigree/Sculpting
 6. Intermediate, Any Other
-

DIVISION 211 – GOURDS – ADVANCED & MASTERS

(Open to Residents of California)

Class

7. Advanced, Painted/Colored, multi medium
8. Advanced, Carved/Filigree/Sculpting
9. Advanced, Any Other

Class

10. Masters, Painted/Colored, multi medium
 11. Masters, Carved/Filigree/Sculpting
 12. Masters, Any Other
-

DIVISION 212 – RECYCLE, UPCYCLE & REFURBISH

Class

1. Wearables
2. Decorative – Under 24”
3. Decorative – Over 24”

Class

4. Unconventional - Under 24”
 5. Unconventional – Over 24”
-

DIVISION 213 – COLLECTIONS

Pick your favorite collections. Collections must be in a small case or mounted securely for display

Class

1. Travel/International, 4’x4’ max

Class

2. Any other not listed; specify on entry form, 4’x4’ max
-

DIVISION 214 – JEWELRY

Class

1. Earrings
2. Necklace

Class

3. Bracelet
 4. Any other not listed
-

DIVISION 215 – GEMS & MINERALS

BEST OF DIVISION

Award sponsored by Fred & Cammie Waters In Memory of Larry Williams

Class

1. Lapidary & Miscellaneous Lapidary Techniques
2. Specimine Collection
3. Faceted Stones

Class

4. Handcrafted Metal & Cast Metal
 5. Miscellaneous Techniques
-

DIVISION 216 SENIOR CITIZEN (65 & OVER)

Class

1. Any wood item
2. Any painted item
3. Any holiday item
4. Any jewelry item

Class

5. Any doll
6. Recycle, Upcycle & Refurbish
7. Any other item not listed, specify on entry form

FINE ARTS

AMADOR COUNTY ARTISTS' ASSOCIATION DEPARTMENT SUPERVISOR JUDY DAY

Open to Amador, El Dorado, Calaveras, Tuolumne Counties and current Amador County Art Association members.

PAINTINGS/SCULPTURES MUST BE THE ORIGINAL EXPRESSION OF THE ARTIST USING HIS/HER OWN PERSONAL REFERENCE MATERIAL - NOT COPIED FROM ANY OTHER ARTWORK OR COMMERCIAL PHOTO!

Any work proven to be a copy of another artist's work or of a published photograph will be disqualified. Commercial reproductions or work previously exhibited in an Amador County Fair will not be accepted. **Artwork submitted must be of a recent production.** Every precaution will be taken to protect exhibits. The Fair will not be responsible for accidents or loss that may occur to any of the exhibits at the show. The artist must carry any insurance desired on an exhibit at his own expense. The Fair will assume no responsibility for the return of the pictures. Please note on entry form any item that is extremely large. For uniformity in judging, articles may be transferred to proper divisions at the discretion of the judge. Awards will be given on merit in each class.

Go online to <https://amador.fairwire.com/>
or Mail entry forms and fees to PO Box 9, Plymouth, CA 95669

If the Artist would like to have their Artwork "For Sale", please show price on entry form in the designated column. If you are entering on-line, please enter the asking price in the "description" field.

Entries in all divisions, except sculpture, will be of a two-dimensional format, framed, and wired with standard picture wire for hanging. Unframed oils/acrylics/etc. accepted only if the **canvas is wrapped around the stretcher bars, no staples or tacks are to show, and edges must be finished or painted.** NO saw-tooth hangers. Works on paper must be under glass. Sculpture is limited in size to 6 ft in any one direction and 50 lbs. in weight and must be portable. All other artwork is limited to 40" HANGING SPACE in any one direction, including frame, for each entry.

BEST OF SHOW AWARDS

AMATEUR ART

Premium sponsored by J. & K. Hipp

ADVANCED AMATEUR ART

Award sponsored by Sabina Turner

PROFESSIONAL ART

Premium sponsored by Gallery 10

SCULPTURE & POTTERY- 3 DIMENSIONAL

Award sponsored by In Memory of Laura Spinetta

POPULAR VOTE AWARDS

ART

Award sponsored by Amador County Artists' Association

SCULPTURE

Award sponsored by Sutter Creek Gallery

Plein Air Painting & Fair Time Photo

For Rules, Please See Page 64

Division #139 & 140

SELL YOUR ARTWORK!

It is up to the artist to specify on the entry form the desired price. If you are entering on-line, please enter the asking price, along with the description, in the "description" field. Artists are responsible for the Fair's commission of 15% and tax. So, consider that in your pricing. **Please title your work.** Artwork is expected to remain on display throughout the Fair. Sold Artwork will be released on Monday, August 4th.

FINE ARTS

FORMS & FEES DUE BY: Friday, July 11th, 4 pm
Entries Received: Saturday, July 26th, 10 am – 4 pm in POKERVILLE HALL
Art Entries Open Judging: Sunday, July 27th, 9:00 am
Entries Released: Monday, August 4th, 10 am – 4 pm

DIVISION 250 - AMATEUR ART

(NO DIGITAL OR GRAPHIC ART – AI)

Those persons who engage in Artwork as a hobby. Anyone, having won three (3) First Places in this category is no longer eligible to enter as an amateur and must enter as an Advanced Amateur. Amateurs may show above present level but may not return to former status. Exhibitor may show in one entry level only per year.

PLEASE NO SUBSTITUTIONS

LIMIT: 2 Entries per class per Exhibitor

Entry Fees: \$5.00 per entry

Ribbons – 1st thru 3rd

BEST OF DIVISION

Premium sponsored by J & K Hipp

Class premiums sponsored by Amador County Arts Council & Amador County Fair

1st Place Winners \$5

Paintings/sculptures must be the original expression of the artist using his/her own personal reference material - not copied from any other artwork or commercial photo.

ARTWORK WILL NOT BE JUDGED OR DISPLAYED IF NOT WIRED PROPERLY FOR DISPLAY!!

ALL ARTWORK MUST INCLUDE TITLE ON ENTRY FORM

Class

1. Oil or Acrylic – Landscape,
2. Oil or Acrylic – Seascape
3. Oil or Acrylic – Western
4. Oil or Acrylic – Still Life, Floral
5. Watercolor – Landscape, Seascape & Western
6. Watercolor – Still Life, Floral
7. Pastel & Encaustic – any subject (except Portrait)
8. Portraits, likeness of a person – Any media, two dimensional
9. Graphics, Pen, Pencil, Charcoal, Ink & Prints (i.e., Mono Prints, Block prints, prints or etchings) – all original, no commercial copies, any subject
10. Collage & Mixed Media – Substantial visible use of two or more different materials, any subject, any media, two dimensional. Must list on back of art.

Class

11. Ag Art – must feature crop, agricultural product, agriculturist, or agricultural landscape any media
12. Animal, Animal Portrait, and Wildlife – any media, 2 dimensional
13. Non-objective Abstract – any media, 2 dimensional
14. Abstract Art – represents distorted or stylized image – any media
15. Other – Any subject not listed above in any media, two dimensional. Must specify on entry form.
16. Art Class Project – when 1 or more students recreates the same subject (Does not qualify for best of Division)

Plein Air Painting & Fair Time Photo

For Rules, Please See Page 64

Division #139 & 140

SELL YOUR ARTWORK!

It is up to the artist to specify on the entry form the desired price. If you are entering on-line, please enter the asking price, along with the description, in the “description” field. Artists are responsible for the Fair’s commission of 15% and tax. So, consider that in your pricing. Please title your work. Artwork is expected to remain on display throughout the Fair. Sold Artwork will be released on Monday, August 4th.

FINE ARTS

FORMS & FEES DUE BY: Friday, July 11th, 4 pm
Entries Received: Saturday, July 26th, 10 am – 4 pm in POKERVILLE HALL
Art Entries Open Judging: Sunday, July 27th, 9:00 am
Entries Released: Monday, August 4th, 10 am – 4 pm

DIVISION 251 - ADVANCED AMATEUR ART

(NO DIGITAL OR GRAPHIC ART – AI)

Those who engage in artwork as a hobby, whose return from sales (if any) does not exceed the cost of materials for the articles sold and is not otherwise compensated because of engaging in this work, except for cash prizes and awards.

Limit: 2 Entries per class per Exhibitor

Entry Fee: \$8.00 per entry

Ribbons – 1st thru 3rd

BEST OF DIVISION

Premium sponsored by J & K Hipp

Class premiums sponsored by Amador County Arts Council & Amador County Fair
1st Place Winners \$10

Paintings/sculptures must be the original expression of the artist using his/her own personal reference material - not copied from any other artwork or commercial photo.

ARTWORK WILL NOT BE JUDGED OR DISPLAYED IF NOT WIRED PROPERLY FOR DISPLAY!!

ALL ARTWORK MUST INCLUDE TITLE ON ENTRY FORM

Class

1. Oil or Acrylic – Landscape, Seascape & Western
2. Oil or Acrylic – Still Life, Floral
3. Watercolor – Landscape, Seascape & Western
4. Watercolor – Still Life, Floral
5. Pastel & Encaustic – any subject (except Portrait)
6. Portraits, likeness of a person – Any media, two dimensional
7. Graphics, Pen, Pencil, Charcoal, Ink & Prints (i.e. Mono Prints, Block prints, prints or etchings) – all original, no commercial copies, any subject
8. Collage & Mixed Media – Substantial visible use of

Class

- two or more different materials, any subject, any media, two dimensional. Must list on back of art.
9. Ag Art – must feature crop, agricultural product, agriculturist, or agricultural landscape any media
 10. Animal, Animal Portrait, and Wildlife – any media, 2 dimensional
 11. Non-objective Abstract – any media, 2 dimensional
 12. Abstract Art – represents distorted or stylized image – any media
 13. Other – Any subject not listed above in any media, two dimensional. Must specify on entry form.

Plein Air Painting & Fair Time Photo

For Rules, Please See Page 64

Division #139 & 140

SELL YOUR ARTWORK!

It is up to the artist to specify on the entry form the desired price. If you are entering on-line, please enter the asking price, along with the description, in the “description” field. Artists are responsible for the Fair’s commission of 15% and tax. So, consider that in your pricing. Please title your work. Artwork is expected to remain on display throughout the Fair. Sold Artwork will be released on Monday, August 4th.

FINE ARTS

FORMS & FEES DUE BY: Friday, July 11th, 4 pm
Entries Received: Saturday, July 26th, 10 am – 4 pm in POKERVILLE HALL
Art Entries Open Judging: Sunday, July 27th, 9:00 am
Entries Released: Monday, August 4th, 10 am – 4 pm

DIVISION 252 - PROFESSIONAL ART

(NO DIGITAL OR GRAPHIC ART – AI)

Artists who are represented by a gallery. Artists who TEACH OR SELL regularly or have “ONE MAN SHOWS”. Exhibitors in this division are not permitted to enter classes in Amateur or Advanced Amateur divisions.

Limit: 2 Entries per Class per Exhibitor

Entry Fee: \$8.00 per entry

Ribbons – 1st thru 3rd

BEST OF DIVISION

Premium sponsored by Elizabeth & Timothy Lukes

Class premiums sponsored by Amador County Arts Council & Amador County Fair

1st Place Winners \$15

PAINTINGS/SCULPTURES MUST BE THE ORIGINAL EXPRESSION OF THE ARTIST USING HIS/HER OWN PERSONAL REFERENCE MATERIAL - NOT COPIED FROM ANY OTHER ARTWORK OR COMMERCIAL PHOTO.

ARTWORK WILL NOT BE JUDGED OR DISPLAYED IF NOT WIRED PROPERLY FOR DISPLAY!!

ALL ARTWORK MUST INCLUDE TITLE ON ENTRY FORM

Class

1. Oil or Acrylic – Landscape/Cityscape
2. Oil or Acrylic – Seascape
3. Oil or Acrylic – Still Life, Floral
4. Watercolor – Landscape/Cityscape
5. Watercolor – Seascape
6. Watercolor – Still Life, Floral
7. Abstract, Non-Objective, 2 dimensional – any media
8. Abstract Art – represents distorted or stylized image – any media
9. Pastel – Any subject except portrait
10. Portraits – likeness of a person – any media, 2 dimensional
11. Collage, Mixed Media & Encaustic – Substantial

Class

- visible use of two or more different materials, any subject, any media, 2 dimensional. **Must list on back of art.**
12. Graphics, Pen, Pencil, Charcoal, Ink & Prints (i.e. Mono Prints, Block prints, prints or etchings) – all original, any subject, no commercial copies
 13. Ag Art – must feature crop, agricultural product, agriculturist, or agricultural landscape, any media
 14. Animals, Animal Portraits and Wildlife, – any media, 2 dimensional
 15. Other – Any subject not listed above, in any media, 2 dimensional, must specify on entry form

Plein Air Painting & Fair Time Photo

For Rules, Please See Page 64

Division #139 & 140

SELL YOUR ARTWORK!

It is up to the artist to specify on the entry form the desired price. If you are entering on-line, please enter the asking price, along with the description, in the “description” field. Artists are responsible for the Fair’s commission of 15% and tax. So, consider that in your pricing. Please title your work. Artwork is expected to remain on display throughout the Fair. Sold Artwork will be released on Monday, August 4th.

FINE ARTS

FORMS & FEES DUE BY: Friday, July 11th, 4 pm
Entries Received: Saturday, July 26th, 10 am – 4 pm in POKERVILLE HALL
Art Entries Open Judging: Sunday, July 27th, 9:00 am
Entries Released: Monday, August 4th, 10 am – 4 pm

DIVISION 253 – 3-DIMENSIONAL SCULPTURE & POTTERY

(NO SOFT SCULPTURE)

Classes 4 & 5 do not qualify for Best of Division

Limit: 2 Entries per Class per Exhibitor

Entry Fee: \$8.00 per entry

Ribbons – 1st thru 3rd

Class

1. Amateur Sculpture – any media
2. Advanced Amateur Sculpture – any media
3. Professional Sculpture – any media

Class

4. Gourds Advanced – carved, fillagree, sculpted or weaving *Premium sponsored by Amador Gourd Artists*
5. Gourds Master – carved, fillagree, sculpted or weaving *Premium sponsored by Amador Gourd Artists*

DIVISION 254 – FAIR THEME ART

“HAPPIEST PLACE ON DIRT!”

(NO DIGITAL OR GRAPHIC ART – AI)

Limit: 2 Entries per Class per Exhibitor

Entry Fee: \$8.00 per entry

Ribbons – 1st thru 3rd

BEST OF DIVISION

Award sponsored by Jim & Margo Carr

Class

1. Amateurs - any media
2. Advanced Amateurs – any media

Class

3. Professional - any media

DIVISION 255 - SCENES OF AMADOR COUNTY

(NO DIGITAL OR GRAPHIC ART – AI)

BEST OF DIVISION

Award sponsored by Barbara Wels In Memory of Victoria Robinson

Premium sponsored by Sutter Creek Gallery

Limit: 2 Entries per Class per Exhibitor

Entry Fee: \$8.00 per entry

Ribbons – 1st thru 3rd

Open to professional, advanced amateur or amateur artists.

Amador County Scenery must have the location identified on the entry blank & on the back of the picture.

Scenes not in Amador County will not be judged for awards.

Class

1. Amateur – Any Media
2. Advanced Amateur - Any Media

Class

3. Professional - Oil, Acrylic or Mixed Media
4. Professional – Pastel, Watercolor, Encaustic, Other

SELL YOUR ARTWORK!

It is up to the artist to specify on the entry form the desired price. If you are entering on-line, please enter the asking price, along with the description, in the “description” field. Artists are responsible for the Fair’s commission of 15% and tax. So, consider that in your pricing. Please title your work. Artwork is expected to remain on display throughout the Fair. Sold Artwork will be released on Monday, August 4th.

PHOTOGRAPHY

DEPARTMENT SUPERVISORS

TAYLOR REEDER

Open to Amador, El Dorado, Calaveras, Tuolumne Counties, and current Amador County Art Association members.

ALL PHOTOS MUST HAVE A TITLE
ON THE ENTRY FORM

****LIMITED TO 5 TOTAL ENTRIES PER EXHIBITOR****



PHOTOS WILL NOT BE JUDGED OR DISPLAYED IF NOT WIRED PROPERLY FOR DISPLAY!!

RULES FOR PHOTOS:

- A. Entries must be entered into the appropriate class to receive judging.
TRADITIONAL PRINT – Any photo taken with film or digital camera, where the image has not undergone manipulation other than cropping, burning, and dodging, normal color or density balancing and spotting. Machine copy of original image is acceptable. 2 or more prints combined or stitched together are not allowed.
MANIPULATED PRINT – Any changes to the image beyond the traditional changes and the image is affixed to paper. This includes hand coloring, cross processing, photo collage, photo grams, cyanotype, Polaroid transfers, etc.
- B. Photos on alternative surfaces (wood, canvas, metal) must be self-contained, dry and submitted in heavy-duty clear bags. Framing with glass is optional.
The Fair management will not be responsible for damages or fingerprints.
- C. FRAMING WITH CLEAR GLASS (**NO PLEXI-GLASS OR PLASTIC**) OF ALL PICTURES, EXCEPT PHOTOS ON ALTERNATIVE SURFACES, (WHICH MUST BE SUBMITTED IN HEAVY DUTY CLEAR BAGS) IS NOW REQUIRED TO FACILITATE CAREFUL HANDLING OF ENTRIES & PROPER HANGING FOR THE SHOW! PHOTOS ARE EASILY SCRATCHED!
- D. Photos in all Divisions must have a minimum image size of 35 square inches (i.e., 5 X 7). Photos in all Divisions (except Div. 262), image, mat and frame may not exceed 20 x 24 inches.
- E. Division 262 (Professional) image, mat and frame may not exceed 32 x 32 inches.
- F. **ALL PHOTOS ENTERED IN THE SHOW MUST HAVE STANDARD D-RINGS AND WIRE FOR HANGING.** Metal, glued, or adhesive hangers will NOT be accepted.
- G. All photos must have been taken by the artist exhibitor but need not have been developed or printed by the exhibitor except in Division 263 (Developing & Processing).
- H. All work must be originally created by the Artist/Exhibitor and to have been taken within two years of the current Fair.
- I. PRINT ARTIST'S NAME ON BACK OF PICTURE. NO ARTIST NAME TO BE EXPOSED ON FRONT OF PICTURE.
(If your name is on the front, please cover with tape.
- J. The Fair has the authority to deem a photo inappropriate to be shown at the Fair.

BEST OF SHOW AWARDS

AMATEUR

*Award sponsored by Camille Waters Photography
Premium sponsored by Farrell Photography*

ADV. AMATEUR

Premium sponsored by The Garbarini Family, LLC –Tom, Don, Jan & Suzy

PROFESSIONAL

*Award sponsored by Carolyn Fox & Larry Angier
Premium sponsored by Farrell Photography*

POPULAR VOTE AWARD

PHOTOGRAPHY

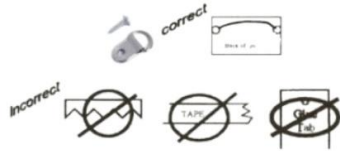
Award sponsored In Memory of Dorothy Magoffin

PHOTOGRAPHY

FORMS & FEES DUE BY: Friday, July 11th, 4 pm
Entries Received: Saturday, July 26th, 10 am – 4 pm in POKERVILLE HALL
Art Entries Open Judging: Sunday, July 27th, 9:00 am
Entries Released: Monday, August 4th, 10 am – 4 pm

DIVISION 260 - AMATEUR PHOTOGRAPHY

AMATEUR - Those who engage in photography as a hobby. Anyone who has won three (3) First Places in this category is no longer eligible to enter as an amateur and must enter as an Advanced Amateur. Amateur Exhibitors may show above present level but may not return to former status. May show in one entry level per year.



Black & White or Color Entry
Limit: Five (5) total entries per exhibitor
Entry Fee: \$5.00 per entry
Ribbons – 1st thru 3rd & Honorable Mention

BEST OF DIVISION

Award sponsored by Frank A

Class premiums sponsored by Amador County Arts Council & Amador County Fair
1st Place Winners - \$5

PHOTOS WILL NOT BE JUDGED OR DISPLAYED IF NOT WIRED PROPERLY FOR DISPLAY!!

All photos entered in the show must have standard d-rings and wire for hanging.

Metal, glued, or adhesive hangers will NOT be accepted.

ALL PHOTOS MUST INCLUDE TITLE ON ENTRY FORM

TRADITIONAL PRINTS – See Rules

Class

1. Scenic Views – Landscapes
2. Scenic Views – Waterscapes
3. Scenic Views – Cityscapes, Architecture/Building
4. Scenic Views – Other
5. Sunrise/Sunset
6. Wildflowers
7. Garden Flowers
8. Wildlife – Portraits & in the landscape
9. Wildlife – Action & behavior
10. Pets
11. Antique Tractors
12. Churches in Amador County

Class

13. Grandparents Pride & Joy – must be your grandchild
14. Children – Action
15. Children-Portrait, single, multiple
16. Children – Other
17. Portraits/People, other than children
18. Any subject – black & white
19. Any subject – color, nature
20. Any subject – color, other
21. Macro/Super close-up – Any subject, any color or black & white
22. Cellphone/iPad Phot

MANIPULATED PRINTS – See Rules

Class

23. Scenic Views – Landscape/ Waterscape

Class

24. Other

Plein Air Painting & Fairtime Photo

For Rules, Please See Page 64

Division #139 & 140

SELL YOUR PHOTOS!

It is up to the artist to specify on the entry form the desired price. If you are entering on-line, please enter the asking price, along with the description, in the “description” field. Artists are responsible for the Fair’s commission of 15% and tax. So, consider that in your pricing. Please title your work. Photos are expected to remain on display throughout the Fair. Sold Artwork will be released on Monday, August 4th

PHOTOGRAPHY

FORMS & FEES DUE BY: Friday, July 11th, 4 pm
Entries Received: Saturday, July 26th, 10 am – 4 pm in POKERVILLE HALL
Art Entries Open Judging: Sunday, July 27th, 9:00 am
Entries Released: Monday, August 4th, 10 am – 4 pm

DIVISION 261 - ADVANCED AMATEUR ONLY

ADVANCED AMATEUR - Those who engage in Photography as a hobby, who has won three (3) First Places in Amateur and/or whose return from sales (if any) does not exceed the cost of materials for the articles sold and are not otherwise remunerated because of engaging in this work, except for cash prizes and awards.

Black & White or Color Entry
Limit: Five (5) total entries per exhibitor



Entry Fee: \$8.00 per entry
Ribbons – 1st thru 3rd & Honorable Mention

BEST OF DIVISION

Award sponsored by David & Leslie Schupp

Class premiums sponsored by Amador County Arts Council & Amador County Fair
1st Place Winners - \$10

PHOTOS WILL NOT BE JUDGED OR DISPLAYED IF NOT WIRED PROPERLY FOR DISPLAY!!

All photos entered in the show must have standard d-rings and wire for hanging.

Metal, glued, or adhesive hangers will NOT be accepted.

ALL PHOTOS MUST INCLUDE TITLE ON ENTRY FORM

TRADITIONAL PRINTS – See Rules

Class

1. Scenic Views – Landscape
2. Scenic Views – Waterscape
3. Scenic Views - Cityscape, Architecture & Building
4. Sunrise/Sunset
5. Flowers
6. Animals
7. Churches in Amador County
8. Action

Class

9. Portraits – “People”
10. People
11. Any subject not listed
12. Macro/Super close-up – Any subject, any color or black & white
13. Cell phone/iPad photos

MANIPULATED PRINTS – See Rules

Class

14. Scenic Views – Land or Water

Class

15. Other

Plein Air Painting & Fairtime Photo

For Rules, Please See Page 64

Division #139 & 140

SELL YOUR PHOTOS!

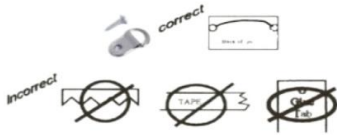
It is up to the artist to specify on the entry form the desired price. If you are entering on-line, please enter the asking price, along with the description, in the “description” field. Artists are responsible for the Fair’s commission of 15% and tax. So, consider that in your pricing. Please title your work. Photos are expected to remain on display throughout the Fair. Sold Artwork will be released on Monday, August 4th

PHOTOGRAPHY

DIVISION 262 - PROFESSIONAL ONLY

FORMS & FEES DUE BY: Friday, July 11th, 4 pm
Entries Received: Saturday, July 26th, 10 am – 4 pm in POKERVILLE HALL
Art Entries Open Judging: Sunday, July 27th, 9:00 am
Entries Released: Monday, August 4th, 10 am – 4 pm

Photographers who are represented by a gallery, who TEACH OR SELL regularly as part of their livelihood or have "ONE MAN SHOWS." Exhibitors in this division are not permitted to enter the Amateur or Advanced Amateur divisions.



Black & White or Color Entry
Limit: Five (5) total entries per exhibitor
Entry Fee: \$8.00 per entry
Ribbons – 1st thru 3rd & Honorable Mention

BEST OF DIVISION

Premium sponsored by Farrell Photography

Class premiums sponsored by Amador County Arts Council & Amador County Fair
1st Place Winners - \$15

PHOTOS WILL NOT BE JUDGED OR DISPLAYED IF NOT WIRED PROPERLY FOR DISPLAY!!

All photos entered in the show must have standard d-rings and wire for hanging.

Metal, glued, or adhesive hangers will NOT be accepted.

ALL PHOTOS MUST INCLUDE TITLE ON ENTRY FORM

TRADITIONAL PRINTS – See Rules

Class

1. Scenic Views – Landscape
2. Scenic Views – Waterscape
3. Scenic Views - Cityscape, Architecture & Building
4. Vineyards/Wineries in Amador County
5. Sunrise/Sunset
6. Weddings in Amador County
7. Animals
8. Churches in Amador County

Class

9. Action
10. Portraits – "People"
11. People "Documentary"
12. Drone photos
13. Macro/Super close-up – Any subject, any color or black & white
14. Other

MANIPULATED PRINTS – See Rules

Class

15. Scenic Views – Land or Water
16. People

Class

17. Animals
18. Other

Plein Air Painting & Fairtime Photo

For Rules, Please See Page 64

Division #139 & 140

SELL YOUR PHOTOS!

It is up to the artist to specify on the entry form the desired price. If you are entering online, please enter the asking price, along with the description, in the "description" field. Artists are responsible for the Fair's commission of 15% and tax. So, consider that in your pricing. **Please title your work.** Photos are expected to remain on display throughout the Fair. Sold Artwork will be released on Monday, August 4th

PHOTOGRAPHY

FORMS & FEES DUE BY: Friday, July 11th, 4 pm
Entries Received: Saturday, July 26th, 10 am – 4 pm in POKERVILLE HALL
Art Entries Open Judging: Sunday, July 27th, 9:00 am
Entries Released: Monday, August 4th, 10 am – 4 pm

DIVISION 263 – PHOTOS FROM FILM

AMATEUR, ADVANCED AMATEUR & PROFESSIONAL
Photos taken on film

Black & White or Color Entry
Limit: Five (5) total entries per exhibitor
Entry Fee: \$8.00 per entry
Ribbons – 1st thru 3rd & Honorable Mention

PHOTOS WILL NOT BE JUDGED OR DISPLAYED IF NOT WIRED PROPERLY FOR DISPLAY!!

All photos entered in the show must have standard d-rings and wire for hanging.

Metal, glued, or adhesive hangers will NOT be accepted.

ALL PHOTOS MUST INCLUDE TITLE ON ENTRY FORM

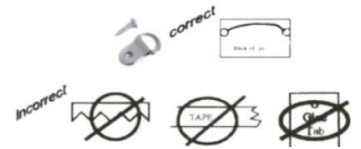
Traditional & Manipulated Prints

Class

1. Black/White

Class

2. Color



DIVISION 264 - FAIR THEME **“HAPPIEST PLACE ON DIRT!”**

Black & White or Color Entry
Limit: Five (5) total entries per exhibitor
Entry Fee: \$8.00 per entry
Ribbons – 1st thru 3rd & Honorable Mention

PHOTOS WILL NOT BE JUDGED OR DISPLAYED IF NOT WIRED PROPERLY FOR DISPLAY!!

All photos entered in the show must have standard d-rings and wire for hanging.

Metal, glued, or adhesive hangers will NOT be accepted.

ALL PHOTOS MUST INCLUDE TITLE ON ENTRY FORM

BEST OF DIVISION

Award sponsored by Carolyn Fox & Larry Angier

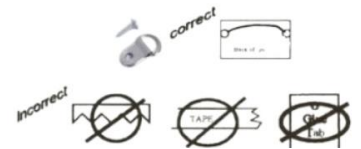
TRADITIONAL PRINTS – See Rules

Class

1. Amateur only - traditional or manipulated
2. Advanced Amateurs - traditional or manipulated

Class

3. Professional - traditional or manipulated



Plein Air Painting & Fairtime Photo

For Rules, Please See Page 64

Division #139 & 140

SELL YOUR PHOTOS!

It is up to the artist to specify on the entry form the desired price. If you are entering on-line, please enter the asking price, along with the description, in the “description” field. Artists are responsible for the Fair’s commission of 15% and tax. So, consider that in your pricing. **Please title your work.** Photos are expected to remain on display throughout the Fair. Sold Artwork will be released on Monday, August 4th

PHOTOGRAPHY

FORMS & FEES DUE BY: Friday, July 11th, 4 pm
Entries Received: Saturday, July 26th, 10 am – 4 pm in POKERVILLE HALL
Art Entries Open Judging: Sunday, July 27th, 9:00 am
Entries Released: Monday, August 4th, 10 am – 4 pm

DIVISION 265 - SCENES OF AMADOR COUNTY

Open to Professionals, Advanced Amateurs and Amateur photographers.

Amador County Scenery must have the location identified on the back of the picture & on the entry form.

Scenes not in Amador County will not be judged for awards. Image and mat not to exceed 16" x 20" inches, plus frame.

Black & White or Color
Limit: Five (5) total entries per exhibitor
Entry Fee: \$8.00 per entry
Ribbons – 1st thru 3rd & Honorable Mention



BEST OF DIVISION

Award sponsored by Carolyn Fox & Larry Angier

PHOTOS WILL NOT BE JUDGED OR DISPLAYED IF NOT WIRED PROPERLY FOR DISPLAY!!

All photos entered in the show must have standard d-rings and wire for hanging.

Metal, glued, or adhesive hangers will NOT be accepted.

ALL PHOTOS MUST INCLUDE TITLE ON ENTRY FORM

TRADITIONAL PRINTS – See Rules

Class

1. Amateur only
2. Advanced Amateurs
3. Professional

MANIPULATED PRINTS – See Rules

Class

4. Amateur only
5. Advanced Amateurs
6. Professional

DIVISION 266 – CREATIVE PHOTOGRAPHY “ANY SUBJECT”

Black & White or Color
Limit: Five (5) total entries per exhibitor
Entry Fee: \$8.00 per entry
Ribbons – 1st thru 3rd & Honorable Mention

PHOTOS WILL NOT BE JUDGED OR DISPLAYED IF NOT WIRED PROPERLY FOR DISPLAY!!

All photos entered in the show must have standard d-rings and wire for hanging.

Metal, glued, or adhesive hangers will NOT be accepted.

ALL PHOTOS MUST INCLUDE TITLE ON ENTRY FORM

AMATEUR

Class

1. Photo shopped – combine 2 or more “individual” prints stitched together or cut and pasted in any way
2. HDR – High Dynamic Range
3. Multiple - individually matted prints within one frame
4. Collages – Multiple, different photos assembled creating one single print

ADVANCED AMATEUR

Class

5. Photoshopped – combine 2 or more “individual” prints stitched together or cut and pasted in any way
6. HDR – High Dynamic Range
7. Multiple - Individually matted prints within one frame
8. Collages – Multiple, different photos assembled creating one single print

PROFESSIONAL

Class

9. Photoshopped – combine 2 or more “individual” prints stitched together or cut and pasted in any way
10. HDR – High Dynamic Range
11. Multiple - Individually matted prints within one frame
12. Collages – Multiple, different photos assembled creating one single print

HORTICULTURE

DEPARTMENT SUPERVISOR

DIANNE BENNETT

OPEN TO AMADOR, EL DORADO & CALAVERAS COUNTIES

FORMS & FEES DUE BY: Sat, July 26th, 4 pm
Entries in Place: Thursday, July 31st, 7 am – 9 am in POKERVILLE HALL
Entries Judged: Thursday, July 31st, 9:30 am
Entries Released: Monday, August 4th, 10 am – 4 pm

HORTICULTURE

BEST OF SHOW

Award sponsored by Rick Vance Trucking

Newly or recently purchased vegetables for exhibit purposes will not be allowed and may be disqualified. The quality desired in agricultural and horticultural products exhibited is the quality that brings the best financial return in the commercial market, and such exhibits must be at least equal in maturity as that state of ripeness required by section 42513 of the California Agricultural Code in order to be considered for premium awards. Section 42513: "Mature means having reached that stage of ripeness which will ensure the completion of the ripening process to a degree which will insure palatability, after the removal of the product from the tree, plant or vine." Section 42515: "Overripe" means having an advanced state of maturity which causes the product to be undesirable for human consumption in a fresh state". NOTE: Unless otherwise stated, the type of vegetable desired for exhibit will be the uniform commercial grade rather than overgrown. Monstrosities will not be considered for premium awards, except under Division 291.



VEGETABLES

VARIETY OF PRODUCTS MUST BE CORRECTLY LABELED UNLESS SPECIFIED VARIETY MUST BE NAMED ON ENTRY BLANK

Limit 2 per Class per Exhibitor
Entry Fee: \$2.00 per entry per class
Ribbons – 1st thru 3rd

DIVISION 285 - FRUIT AND POD VEGETABLES

Plate Display

<u>Class</u>	<u>QUANTITY</u>	<u>Class</u>	<u>QUANTITY</u>
1. Beans, Bush	6-12 pods	5. Peppers, other sweet varieties-	2-4
2. Beans, Pole variety	6-12 pods	6. Peppers, Chili	3-5
3. Eggplant	1-2	7. Peppers, Wax	3-7
4. Peppers, Bell	2-4	8. Any other not listed	Min of 2

DIVISION 286 - TOMATOES

<u>Class</u>	<u>QUANTITY</u>	<u>Class</u>	<u>QUANTITY</u>
1. Tomatoes, Big Boy Hybrid	3-5	5. Tomatoes, Slicing	3-5
2. Tomatoes, Earliana	3-5	6. Tomatoes, All Yellow	3-5
3. Tomatoes, Early Girl	3-5	7. Tomatoes, Cherry	6-12
4. Tomatoes, Ace	3-5	8. All other varieties	3-5

HORTICULTURE

DIVISION 287 - LEAFY & STEM VEGETABLES

Plate Display

<u>Class</u>	<u>QUANTITY</u>	<u>Class</u>	<u>QUANTITY</u>
1. Corn, Sweet, Yellow	3-5 ears	4. Any other leafy or stem vegetable, specify on entry form	5 stems
2. Swiss Chard	5 stems		
3. Rhubarb	5 stems		

DIVISION 288 - ROOT, BULB & TUBER VEGETABLES

Plate Display

<u>Class</u>	<u>QUANTITY</u>	<u>Class</u>	<u>QUANTITY</u>
1. Beets, Garden, Topped	3-5	8. Onions, Globe, Yellow	5
2. Carrots, Topped	3-5	9. Onions, Flat, Red	5
3. Garlic, White	6	10. Onions, Flat, Yellow	5
4. Garlic, Elephant	6	11. Potatoes	5
5. Garlic, Braided	12 or 24	12. Radishes, Any Variety	2 Bunches
6. Onions, Globe, White	5	13. Any other root, bulb or tuber vegetable, specify on entry form	5
7. Onions, Globe, Red	5		

DIVISION 289 - VINE CROPS

Plate Display

<u>Class</u>	<u>QUANTITY</u>	<u>Class</u>	<u>QUANTITY</u>
1. Cucumbers, Slicing, Dark Green	3	7. Squash, Table Size, Scalloped	3-5
2. Cucumbers, Slicing, Lemon	3	8. Squash, Table Size, Yellow	3-5
3. Cucumbers, Pickling	6	9. Squash, Table Size, Crooked Necked	3-5
4. Cucumbers, Any Other	5	10. Melons, Any	1
5. Squash, Table Size, Zucchini	3-5	11. Any other not listed; specify on entry form	3-5
6. Squash, Table Size, Light Green	3-5		

DIVISION 290 - HERBS

<u>Class</u>	<u>QUANTITY</u>	<u>Class</u>	<u>QUANTITY</u>
1. Cut Herb, Sage	1 bunch	4. Cut Herb, Rosemary	1 bunch
2. Cut Herb, Oregano	1 bunch	5. Cut Herb, Parsley	1 bunch
3. Cut Herb, Sweet Basil	1 bunch	6. Cut Herb, any other variety	1 bunch

DIVISION 291 - MISCELLANEOUS

<u>Class</u>	<u>Class</u>
1. Largest Zucchini	3. Largest, other than listed; specify on entry form
2. Largest Onion	4. Vegetable Garden Oddities

DIVISION 292 - FRESH FRUIT AND NUTS

<u>Class</u>	<u>QUANTITY</u>	<u>Class</u>	<u>QUANTITY</u>
1. Pit Fruits	4	4. Any other fruit	4
2. Seeded Fruits	4	5. Walnuts, all varieties	6
3. Seedless Fruits	4	6. Any Other Nut; specify on entry form	6

HORTICULTURE

DIVISION 293 - ORGANIC PRODUCE

ALL ENTRIES MUST BE ORGANICALLY GROWN IN ACCORDANCE WITH THE CA ORGANIC FOODS ACT OF 1990.

<u>Class</u>	<u>QUANTITY</u>	<u>Class</u>	<u>QUANTITY</u>
1. Tomatoes	3 - 5	5. Fruit	4
2. Leaf & Stem Vegetables	5	6. Pod	6-12 pods
3. Herbs	1 bunch	7. Vine Crops	3-5
4. Root Bulb or Tuber	3-5	8. Any Other Not Listed	3-5

DIVISION 294 - FARMER'S BEST

Not eligible for Best of Show

Entry Fee: \$2.00 per entry

Limit 1 entry per class, per exhibitor

<u>Class</u>	<u>QUANTITY</u>	<u>Class</u>	<u>QUANTITY</u>
1. Family Garden Display -Tray Display			
Tomato, any variety	3 - 5	Potatoes, any variety	3 - 5
Squash, any variety	3 - 5	Beets, any variety	3 - 5
Corn, any variety	3 - 5	Beans, Bush or Pole	3-5 pods
Peppers, any variety	3 - 5	Onions	3 - 5
Garlic, any variety	3 - 5	Cucumbers	3 - 5

- UNLESS SPECIFIED VARIETY, MUST BE NAMED ON ENTRY FORM
- Exhibitor to choose 5 varieties from the list above.
- Varieties to be named on entry form – each variety to be same type on each tray display.

Class

2. Care Basket

- Exhibitor is to display 10 varieties of homegrown fruits, nuts, vegetables and herbs.
 - A 5" X 7" card naming all varieties clearly printed or typed is to be displayed in an open basket where all products can easily be viewed.
-

PLEASE REMEMBER TO THANK YOUR SPONSORS!!!

FLORICULTURE

DEPARTMENT SUPERVISOR
ERIK LUCAS & SYBIL GRIFFITH

OPEN TO AMADOR, CALAVERAS. EL DORADO
& TUOLUMNE COUNTIES

2025 FEATURE FLOWER DAHLIA – ANY VARIETY

SWEEPSTAKES FLORICULTURE

Sponsored by FRANK A

1st - \$25 2nd - \$15 3rd - \$10

TERMS:

1. ANNUAL: A plant that completes its outdoor cycle or growth in one year.
2. BIENNIAL: A plant that normally completes its outdoor cycle of growth in two years.
3. PERENNIAL: A plant that lives, blooms, and seeds for more than two years.
4. HERBACEOUS PERENNIAL: A plant that lives longer than two years but which, in colder climates, dies back to the ground each winter.
5. SPIKE: A flower structure with flowers, stem-less or very short-stemmed on common length stalk. Example: Gladiolus.
6. SPRAY: Portion of a plant with a number of flowers on one stem.
7. STEM: The main ascending part of a plant.
8. STALK: A stiff stem, which may or may not branch; one or more flowers and buds.
9. BLOOM: Individual flowers; one blossom on a stem. Example: Dahlias, Carnations, Roses all disbudded.
10. SPECIMEN: A single plant, bloom or spike, spray, stalk, or stem.
11. DRY: Free from liquid or moisture. Not wet, damp, or moist.

FLORICULTURE INFORMATION:

- Exhibits in the Floriculture Department must have been grown by the exhibitor within the county, district or community represented by the exhibitor, except classes for arrangements.
- Plants purchased within the last 6 months or purchased cut flowers for exhibiting purposes will not be allowed and may be disqualified.
- The Fair supplies display vases for cut flowers. You may use your own vase at your own risk.

FLORICULTURE & RULES:

- A. All entries must be brought to the Floriculture building through the Main Street Gate west of the Main Gate (GAS ENGINE ENTRANCE) where arrangements have been made to admit all exhibitors with entries & will be checked off from an official list of participants. (Please refer to Fairgrounds Map)
- B. EXHIBITORS MUST: Provide drainage saucers for plants.
- C. MINIATURES: Must fit in size of arrangement specified.
- D. Dry arrangements must contain **natural dry material**.
- E. ARRANGEMENTS: In all but "Dry" Arrangements, must contain FRESH PLANT MATERIALS AND FLOWERS EXCEPT WHERE OTHERS ARE SPECIFIED.
- F. Accessories, unless specified, should be kept to a minimum, and with arrangement must be anchored securely on a rigid base for moving.
- G. Fresh plant material must not be sprayed or dyed.
- H. Exhibits must not occupy an area more than 12" x 18" inches.
- I. PLACE SETTINGS: Service for one to be shown in space 24" wide and 24" long maximum. One placement or cloth (cloth to be folded or swatch of material may be used to indicate color and texture), napkin, china, glasses, and centerpiece. Flatware/silverware to be displayed at your own risk. Individual tables will not be used. Dishware not to be duplicated two years in a row.
- J. Floriculture judged American system.

DEFINITIONS

NOVICE: Open to amateurs who have not won more than a total of 4 blue ribbons at any previous Amador County Fair.

INTERMEDIATE: Open to amateurs who have won 5-10 blue ribbons at any previous Amador County Fair.

ADVANCED: Open to amateurs who have won more than 10 blue ribbons with 5 or more years' experience in flower arrangement competitions.

FLORICULTURE

CUT FLOWERS & FLORAL ARRANGEMENTS

FORMS & FEES DUE BY Saturday, July 26th, 4 pm
Potted Entries Received: Wednesday, July 30th, 9 am – noon, Floriculture Building
Cut Flower Entries Received: Thursday, July 31st, 7 am – 9 am, Floriculture Building
Judged: Thursday, July 31st, 10 am
Entries Released: Monday, August 4th, 10 am – Noon

ROSES

One Stem per Vase – Unless Stated Otherwise
NOTE: Entry form must include correct name of rose
Entry Fee: \$1.00 per entry per class
Ribbons – 1st thru 3rd

BEST OF SHOW

From Division 300-301

*Award sponsored by Fred & Cammie Waters in Memory of
Former Floriculture Department Supervisor June M. Williams*

DIVISION 300 – NOVICE ONLY

BEST OF DIVISION AWARD

Premium sponsored by The Mother Lode Rose Society

Class

1. Hybrid Teas or Grandiflora, 1 bloom per stem
2. Floribunda, 1 spray, 2 or more blooms

Class

3. Miniature, 1 spray, 2 or more blooms per stem

DIVISION 301 – OPEN

BEST OF DIVISION AWARD

Premium sponsored by Amador Water Agency

Class

1. Hybrid Teas or Grandiflora, 1 bloom per stem
Premium sponsored by The MLRS
2. Teas or Grandiflora, 1 spray, 2 or more blooms per stem
3. Three Hybrid Teas or Grandiflora in one container
4. Most fragrant rose, any type
5. Rose in a bowl, any type, and bowls supplied
6. Floribunda, 1 bloom per stem
7. Floribunda, 1 spray, 2 or more blooms
Premium sponsored by The MLRS
8. Floribunda, 3 stems in one container
9. David Austin or English Rose, bloom or spray
Premium sponsored by The MLRS
10. Climbers, 1 bloom per stem or 1 spray, 2 or more
blooms per stem *Premium sponsored by The MLRS*
11. Old Garden Roses, 1 bloom per stem, or 1 spray,
2 or more blooms per stem
Premium sponsored by The MLRS

Class

12. Shrubs, 1 bloom per stem
13. Shrubs, 1 spray, 2 or more blooms per stem
Premium sponsored by The MLRS
14. Polyanthas, 1 spray, 2 or more blooms per stem
15. Miniature, 1 bloom per stem
Premium sponsored by The MLRS
16. Miniature, 1 spray, 2 or more blooms per stem
17. Mini Flora, 1 bloom per stem
Premium sponsored by The MLRS
18. Three Miniature Roses in one container
19. Container grown Miniature Roses
20. Rose Arrangement-Exhibitor's Choice with any
variety of roses
21. Miniature Rose Arrangement

FLORICULTURE

BEST OF SHOW

From Division 302-310

Award Sponsored by Griff's Electric

MISCELLANEOUS CUT FLOWERS

DIVISION 302 – CUT FLOWERS

Entry Fee: \$1.00 per entry per class

Ribbons – 1st thru 3rd

BEST OF DIVISION AWARD

Award Sponsored by Kim Toma

Premium sponsored by Amador Water Agency

Class

1. Zinnia, 1 stem
2. Begonias, floated
3. Cannas, 2 stems
4. Sunflower, any colors, 1 stem

Class

5. Lilies, one stem only
 6. Marigolds, any type
 7. Daisy's, any variety
 8. Any other not listed above
-

DIVISION 303 - FEATURE FLOWER - DAHLIA

Entry Fee: \$1.00 per entry per class

Ribbons – 1st thru 3rd

BEST OF DIVISION AWARD

Award sponsored by The Antique Gardener – Aimee Peterson

Premium sponsored by Amador Water Agency

Class

1. Single Petal Dahlia
2. Dinner Plate Dahlia
3. Mini Pompon

Class

4. Ball Dahlia
 5. Water Lily Dahlia
 6. Any Other Dahlia
-

FRESH ARRANGEMENTS & FRESH TABLE SETTINGS

DIVISION 304 - FRESH FLORAL ARRANGEMENTS

Entry Fee: \$1.00 per entry per class

Ribbons – 1st thru 3rd

BEST OF DIVISION

Premium sponsored by Amador Water Agency

NOVICE & INTERMEDIATE

Class

1. Fair Theme: "HAPPIEST PLACE ON DIRT!"
2. Designer's Choice

ADVANCED

Class

3. Fair Theme: "HAPPIEST PLACE ON DIRT!"
4. Designers Choice

LOCAL GARDEN CLUB CONTACTS

Foothill Garden Club

Laurel Taylor
916-524-8566

Mother Lode Rose Society

Chrisie Common
209-295-4680
Deborah Kinnick
209-217-7324

FLORICULTURE

DIVISION 305 – FRESH FLORAL ARRANGEMENTS PETITE/MINIATURE

Miniature under 6" Petite, not less than 6" or more than 9"
Be Creative! Accessories Are Important!
Entry Fee: \$1.00 per entry per class
Ribbons – 1st thru 3rd

BEST OF DIVISION

Premium sponsored by Amador Water Agency

NOVICE & INTERMEDIATE

Class

1. Petite – Fair Theme: "HAPPIEST PLACE ON DIRT!"
2. Petite – Designer's Choice

ADVANCED

Class

3. Miniature – Fair Theme: "HAPPIEST PLACE ON DIRT!"
4. Miniature – Designer's Choice

DIVISION 306 – TABLE SETTINGS, FRESH CENTERPEICES

Entry Fee: \$1.00 per entry per class
Ribbons – 1st thru 3rd

BEST OF DIVISION

Premium sponsored by Amador Water Agency

FRESH TABLE SETTINGS

Class

1. Fair Theme: "HAPPIEST PLACE ON DIRT!"
2. Hollywood

Class

3. Sail Around the World
4. Designers Choice

DRY ARRANGEMENTS, WALL HANGINGS & DRY TABLE SETTINGS

DIVISION 307 – DRY ARRANGEMENTS

May Include Synthetics
Entry Fee: \$1.00 per entry per class
Ribbons – 1st thru 3rd

BEST OF DIVISION

Premium sponsored by Amador Water Agency

NOVICE & INTERMEDIATE

Class

1. Fair Theme: "HAPPIEST PLACE ON DIRT!"
2. Designer's Choice

ADVANCED

Class

3. Fair Theme: "HAPPIEST PLACE ON DIRT!"
4. Designer's Choice

DIVISION 308 - DRY ARRANGEMENTS PETITE/MINIATURE

Miniature under 6" Petite, not less than 6" or more than 9"
No Synthetics or Artificial Color
Entry Fee: \$1.00 per entry per class
Ribbons – 1st thru 3rd

BEST OF DIVISION

Premium sponsored by Amador Water Agency

NOVICE & INTERMEDIATE

Class

1. Petite – Fair Theme: "HAPPIEST PLACE ON DIRT!"
2. Petite – Designer's Choice

ADVANCED

Class

3. Miniature – Fair Theme: "HAPPIEST PLACE ON DIRT!"
4. Miniature – Designer's Choice

FLORICULTURE

DIVISION 309 – TABLE SETTINGS, DRY CENTERPIECES

Entry Fee: \$1.00 per entry per class
Ribbons – 1st thru 3rd

BEST OF DIVISION

Premium sponsored by Amador Water Agency

DRY TABLE SETTINGS

Class

5. Fair Theme: “HAPPIEST PLACE ON DIRT!”
6. Hollywood

Class

7. Sail Around the World
 8. Designers Choice
-

DIVISION 310 - DRY WALL HANGINGS

Entry Fee: \$1.00 per entry per class
Ribbons – 1st thru 3rd

BEST OF DIVISION

Premium sponsored by Amador Water Agency

NOVICE & INTERMEDIATE

Class

1. Fair Theme: “HAPPIEST PLACE ON DIRT!”
2. Designer’s Choice

ADVANCED

Class

3. Fair Theme: “HAPPIEST PLACE ON DIRT!”
 4. Designer’s Choice
-

CACTI, BONSAI & POTTED PLANTS

BEST OF SHOW

Divisions 311, 312 & 313

DIVISION 311 – BONSAI

Entry Form must include name of Bonsai
Entry Fee: \$1.00 per entry per class
Ribbons – 1st thru 3rd

BEST OF DIVISION

Premium sponsored by Amador Water Agency

BONSAI

Class

1. Novice Bonsai
2. Bonsai - Informal Upright
3. Bonsai - Formal Upright
4. Bonsai - Cascade
5. Bonsai - Group Planting

Class

6. Shohin
 7. Wind Swept
 8. Root on or over stone
 9. Any other not listed above
-

DON’T FORGET TO THANK YOUR SPONSORS!!!

FLORICULTURE

DIVISION 312 - CACTI AND SUCCULENTS

Entry Fee: \$1.00 per entry per class

Ribbons – 1st thru 3rd

BEST OF DIVISION

Premium sponsored by Amador Water Agency

CACTI & SUCCULENTS

Class

1. Collection of cacti grown in one container, 3 or more varieties, judged on quality of specimen.
2. Miniature collection of cacti grown in one container, 3 or more varieties, judged on quality of specimen container not to exceed 6" x 6".
3. Collection of succulents grown in one container, 3 or more varieties, to be judged on quality of specimens.
4. Miniature collection of succulents grown in one container, 3 or more varieties, judged on quality of specimen, container not to exceed 6x6".
5. Most outstanding single specimen of cacti.
6. Most outstanding single specimen of succulent.
7. Jade Tree
8. Euphorbia
9. Any other not listed above

DIVISION 313 - POTTED PLANTS

Plants to be in suitable pots no larger than 12" & 12" All pots must have drainage saucers. No aluminum foil.
HANGING PLANTS Must be complete with a suitable hanger.

Entry Fee: \$1.00 per entry per class

Ribbons – 1st thru 3rd

BEST OF DIVISION

Premium sponsored by Amador Water Agency

POTTED PLANTS

Class

1. African Violet, double, single crown
2. African Violet, single, single crown
3. African Violet, any other not listed above
4. Begonia
5. Fern
6. Geranium

Class

7. Philodendron
8. Potted trees or potted shrubs
9. Topiary
10. Orchid
11. California Native Plant, Shrub or Tree
12. Any other not listed above

HANGING PLANTS

Class

13. Fern
14. Ivy
15. Spider Plant

Class

16. Hanging Basket - any variety
17. Any other not listed above

DISH GARDENS

Must contain 3 or more varieties of living plants

Class

18. Farm to Fair Fun
19. Holiday

Class

20. Terrarium Garden – Jar or enclosed clear container
21. Miniature Garden

DIVISION 314 – GARDEN ODDITIES

(This division does not qualify for sweepstakes or Best of Division.)

Entry Fee: \$1.00 per entry per class

Ribbons – 1st thru 3rd

BEST OF DIVISION

Award sponsored by The Antique Gardener – Aimee Peterson

Class

1. Most Bizarre or Unique
2. Largest Cut Flower

Class

3. Most Untouchable
4. Smallest Cut Flower

FLORICULTURE

DISPLAY GARDENS

ENTRIES LIMITED TO AMADOR COUNTY

ENTRY FORMS & FEES DUE BY: Wednesday, April 30th, 4 pm
ALL ENTRIES MUST BE STARTED BY: May 1st
ALL ENTRIES MUST BE COMPLETED BY Tuesday, July 30th
ACCESSORIES MUST BE IN PLACE BY Wednesday, July 31st, by 9 am
Entries Judged: Wednesday, 31st, 10am

RULES FOR GARDENS

1. Open to any non-commercial organization in Amador County.
2. Exhibits are to be made as much as possible of fresh materials. Emphasis is to be on the feature plant and flower material, not on accessories. Plants are to remain in the garden once planted!
3. Material used in display gardens must be sufficiently hardy or well enough rooted to be presented through the Fair.
4. Floriculture booth space will be allotted as entries are received. When spaces are filled, entries will close.
5. After judging, the exhibits must display a suitable sign 10" X 18", giving the name of the organization. Any emblems or identification shown prior to completion of judging will result in a -10-point loss of total points.
6. All gardens must remain in place and become the property of the Amador County Fair.
7. All gardens are limited to their designated area.
8. All debris from the gardens must be removed from the grounds by the exhibitor.
9. Weeding of the gardens should be started as soon as weather permits and maintained throughout the Fair. Weeding of the gardens MUST be completed by June 15th.
10. Gardens that encircle the pond shall have no display decorations using wood, metal, or other material to exceed 36" wide x 24" in height, that obstructs the view of the pond. If you exceed this, it will result in a -10-point.
11. Plant Material: Use appropriate plant material to reflect & coordinate with the themed class entered.
12. Up to +10 points may be added for use of the Theme flower, Dahlia – any variety. Theme flower must be present to earn the points but are not required to be planted in the ground. They may be in any container that is part of your garden display and added within the appropriate time frame as listed in the rules.
13. Points will be deducted from the total score for late entry -5, not started by start date 5 or garden not completed by completion date -5, for a possible total loss of -15 points.

***DECORATIVE ITEMS NOT CONTAINING PLANT
MATERIAL HAVE TO BE IN PLACE BY 9AM THE DAY
OF JUDGING & CANNOT BE REMOVED UNTIL
CLOSING TIME LAST DAY OF FAIR. ALL
DECORATIVE ITEMS PLACED IN GARDEN AT THE
OWNER'S RISK!***

FLORICULTURE

DISPLAY GARDENS

BEST THEME GARDEN

Premium sponsored by Amador Flower Farm

BEST SUN LOVING GARDEN

Gift Certificate sponsored by Big Oak Nursery

BEST COUNTRY GARDEN

Premium sponsored by Frank A

DIVISION 315 – GARDENS

Entry Fee: \$20.00 per Entry

Premiums Offered per Class

1 st	2 nd	3 rd
\$75	\$65	\$55

Judged Danish System for ribbons, then American System for the prize monies

Class

1. Theme Garden: Using the Fair Theme:
“HAPPIEST PLACE ON DIRT!”
2. Sun Loving Garden: Using appropriate plant materials.

Class

3. Country Garden: Using appropriate plant materials.

NOTE: GARDENS ARE OFFERED TO PREVIOUS YEAR’S EXHIBITORS FOR RENEWAL FIRST. IF THERE IS A NON-RENEWAL, GARDENS ARE THEN OFFERED ON A FIRST COME BASIS. TO BE ADDED TO THE WAITING LIST FOR AN OPEN GARDEN, PLEASE CONTACT THE ENTRY OFFICE AT (209) 245-6921

SCORECARD FOR JUDGING

Selection of Plant Material	25%
Design	25%
Proportion of Scale	15%
Originality	25%
<u>Accessories</u>	10%
Total	100%