

# ADULT DIVISION SCHEDULE

ENTRY	IN PLACE	JUDGED	PAGE
Commercial Wine	Wednesday 4/13 4:00 pm	Saturday 4/23 9:00 am	<b>67</b>
Homemade Wine	Tuesday 6/14 4:00 pm	Wednesday 6/22 9:00 am	<b>69</b>
Beer	HB. 6/4 Com. 7/1 4:00 pm	Saturday HB. 6/18 Com 7/19 9 am	<b>72</b>
<b>ADULT SPECIAL COMPETITIONS</b>			
Pasties Traditional	Saturday 7/30 9-10:30 am	Saturday 7/30 11:00 am	<b>77</b>
Pasties Creative	Saturday 7/30 9-10:30 am	Saturday 7/30 11:00 am	<b>77</b>
Eclairs Traditional	Saturday 7/30 9-10:30 am	Saturday 7/30 11:00 am	<b>77</b>
Eclairs Creative	Saturday 7/30 9-10:30 am	Saturday 7/30 11:00 am	<b>77</b>
Italian Wedding Cookies	Saturday 7/30 9-10:30 am	Saturday 7/30 11:00 am	<b>77</b>
Pilaf	Saturday 7/30 9-10:30 am	Saturday 7/30 11:00 am	<b>77</b>
Meat Kabobs (gentlemen only)	Saturday 7/30 9-10:30 am	Saturday 7/30 11:00 am	<b>77</b>
Wine Jelly	Monday 7/25 10 - 4 pm Tuesday 7/26 7 - 9 am	Friday 7/29 10:00 am Friday 7/29 10:00 am	<b>77</b>
Special Comp Crafts	Saturday 7/23 9-10:30 am	Sunday 7/24 10:00 am	<b>78</b>
Special Comp Floriculture	Thursday 7/28 7 - 9 am	Thursday 7/28 10:00 am	<b>78</b>
Scarecrows	Saturday 7/23 10 - 4 pm	Sunday 7/24 10:00 am	<b>79</b>
Plein Air Painting	7/28 - 7/31 12 - 6 pm	Sunday 7/31 2:00 pm	<b>79</b>
Fair Time Photo	7/28 - 7/31 12 - 6 pm	Sunday 7/31 2:00 pm	<b>79</b>
Special Education	SEE CLASS DEPARTMENTS	SEE CLASS DEPARTMENTS	<b>80</b>
Feature Exhibits	Tuesday 7/26 10 am	Thursday 7/28 10:00 am	<b>81</b>
<b>Creative Home Arts, Fine Arts &amp; Photography ENTRY FORM DEADLINE: Friday July 8 - 4 pm</b>			
Baked Foods	Monday 7/25 3 - 6 pm Tuesday 7/26 7 - 9 am	Tuesday 7/26 10:00 am Tuesday 7/26 10:00 am	<b>82</b>
Preserved/Dried Foods	Monday 7/25 3 - 6 pm Tuesday 7/26 7 - 9 am	Friday 7/29 10:00 am	<b>84</b>
Clothing & Textiles	Saturday 7/23 10 - 4 pm	Sunday 7/24 9:00 am	<b>88</b>
Quilts	Saturday 7/23 10 - 4 pm	Sunday 7/24 9:00 am	<b>90</b>
Hobbies & Crafts	Saturday 7/23 10 - 4 pm	Sunday 7/24 9:00 am	<b>92</b>
Art/Sculptures	Saturday 7/23 10 - 4 pm	Sunday 7/24 9:00 am	<b>96</b>
Photography	Saturday 7/23 10 - 4 pm	Sunday 7/24 9:00 am	<b>101</b>
<b>AG Hort &amp; Floriculture ENTRY FORM DEADLINE: Saturday, July 23 - 4 pm</b>			
Ag-Hort	Thursday 7/28 7 - 9 am	Thursday 7/28 9:30 am	<b>107</b>
Floriculture: Cacti; Succulents; Bonsai; Potted Herbs; Dried Arrangements; Wall Hangings; Table Arrangements; Table Settings w/dried Centerpieces; Potted/Hanging Plants	Thursday 7/28 7 - 9 am	Thursday 7/28 10:00 am	<b>110</b>
Miscellaneous Cut Flowers; Cut Flowers; Roses; Fresh Flower Arrangements; & Table Settings	Thursday 7/28 7 - 9 am	Thursday 7/28 10:00 am	<b>115</b>
<b>Garden ENTRY FORM DEADLINE: Friday, May, 13, 2022</b>			
Gardens	Tuesday 7/26 Completed	Wednesday 7/27 10 am	<b>116</b>

# COMMERCIAL WINE COMPETITION

## OPEN TO RESIDENTS OF CALIFORNIA

Wines MUST be made from produce of The Sierra Foothills AVA (American Viticulture Area) which includes the following counties: Amador, Calaveras, El Dorado, Mariposa, Nevada, Placer, Tuolumne, and Yuba Counties. The qualifying AVA/region/county must be stated on the commercial label in some recognized form.

Department Head: Steve Jones  
[scvrose@aol.com](mailto:scvrose@aol.com)

### ENTRIES RECEIVED **ONLINE ONLY**

April 1<sup>st</sup> through April 13<sup>th</sup>

Fees can be paid online when registering or by check  
Entries may be dropped off or shipped to the Fair Office

Monday-Friday 9 am to 4 pm

at the

Amador County Fair Office  
18621 Sherwood & School Streets  
Plymouth, CA 95669

Judging: Saturday, April 23<sup>rd</sup> at 9 am

**FAIR'S WINE TASTING: Fri, July 29<sup>th</sup> 7:00 pm – check on-line for pricing**

### DIVISION 125 - COMMERCIAL WINES

Entry Fee: \$30.00 per Entry  
No Cash Awards – Digital Medals Only  
Awards if sponsored

#### **BEST OF SHOW**

sponsored by Clockspring Vineyards

#### **SIERRA FOOTHILLS WINERY OF THE YEAR**

sponsored by Sobon Family Wines

#### **BEST WHITE WINE**

*Sponsored by Terra d' Oro Winery*

#### **BEST ROSÉ**

*Sponsored by Prospect Cellars*

#### **BEST AMADOR COUNTY RED ZINFANDEL**

*Sponsored by Terra d' Oro Winery*

#### **BEST AMADOR COUNTY ITALIAN VARIETAL**

*Sponsored by Vino Noceto*

#### **BEST AMADOR COUNTY RHONE VARIETAL**

*Sponsored by Terra d' Oro Winery*

#### **BEST AMADOR COUNTY RED BARBERA VARIETAL**

*Sponsored by Cooper Vineyards In Memory of Dick Cooper*

#### **BEST RED WINE**

*sponsored by Sobon Family Wines*

#### **BEST DESSERT/SWEET WINE**

*sponsored by Clockspring Vineyards*

### **ENTRIES SHALL CONFORM TO THE FOLLOWING RULES:**

1. Entries become property of the Amador County Fair and will not be returned.
2. **Entries must be received by 4 PM, April 13, 2022.**
3. All classes will be judged single blind. Awards will be based on Danish System of Judging. Double Gold, Gold, Silver, and Bronze Awards will be based totally on the recommendations of the judges judging each class. The judges for each division will recommend a Best of Class Award.
4. All wines will be stored in a temperature-controlled environment prior to the judging.
5. The wine judging is not open to the public. However, **the Fair Wine Tasting, held Friday, July 29<sup>th</sup>** is open to all. Entries will feature the **award-winning** wines poured by the wineries. Admission will be charged. Pouring at the event is limited to competition entrants.
6. Wines must be bottled under bond by a California Winery. Each entry consists of **THREE (3)** bottles of wine. One bottle is for display during the Fair, and the remaining bottles are for judging or backup.
7. Any bottles not opened for judging may be used by the Amador County Fair for promotional purposes.
8. The inventory requirement for wine entries has been removed. If possible, please have sufficient quantity of each entry to pour at the Fair's **July 29<sup>th</sup>** Wine Tasting event.

# COMMERCIAL WINE COMPETITION

---

9. Barrel samples are not allowed. No exceptions.
10. All wines **must** have TTB approved labels attached for the specific wine entered. No "approval pending" type labels will be allowed.
11. Wine entered in "Blend" categories **must state varietal** on label. All varietals and percentages must be stated on entry form.
12. The Director of the Competition reserves the right to combine classes when the number of entries warrants, or to divide classes if the range of sweetness or other factors warrants.

## SIERRA FOOTHILLS WINERY OF THE YEAR

The number and rank of Double Gold, Gold, Silver, Bronze, Best of Show, and Best of Class awards won by the winery's **top 5** wines. Points will be given for each Class Medal as well as Best of Class, Best White Wine, Best Rosé Wine, Best Red Wine, Best Dessert/Sweet Wine, and Best of Show. (Awards given for "Best of Amador County" selections will be excluded as these compete in the "Best of" Category.)

### **Class - WHITE WINES (UP TO & INCLUDING 1.0% RS)**

1. Sauvignon Blanc
2. Viognier
3. Other White Rhone Varietals (Marsanne, Roussanne) & White Rhone Blends - 2 or more of any Rhone Varietal
4. Chardonnay
5. Other White Varietals – Albarino, Chenin Blanc, Gewurztraminer, Pinot Gris, Riesling, Semillon, etc.
6. Other White Varietal Blends
7. White Table Wines (Varietal not stated on the label)
8. Sparkling Wines

### **Class - RED WINES**

9. Zinfandel, Regular - Alc: < 14%
10. Zinfandel, Regular - Alc: ≥ 14%
11. Primitivo
12. Sangiovese / Sangioveeto / Brunello
13. Barbera
14. Other Red Italian Varietals – Aglianico, Charbono, Dolcetto Freisa, Nebbiolo, Refosco, Teroldego etc.
15. Red Italian Blends - 2 or more of any Italian Varietal
16. Grenache
17. Mourvedre
18. Syrah / Shiraz
19. Petite Sirah / Durif
20. Other Red Rhones – Alicante Bouschet, Carignane, Counoise
21. Red Rhone Blends - 2 or more of any Rhone Varietal
22. Tempranillo
23. Cabernet Franc
24. Cabernet Sauvignon
25. Malbec
26. Merlot
27. Red Bordeaux Blends – 2 or more of any Bordeaux Varietal
28. Other Red Bordeaux- Petite Verdot, etc.
29. Other Red Varietals - Cinsault, Mission, Pinotage, Pinot Noir, etc.
30. Other Red Varietal Blends
31. Red Table Wines (Varietal not stated on the label)

### **Class - ROSÉ, PINK & BLUSH WINES**

32. Varietal Rosé – Barbera, Cinsault, Grenache, Malbec, Merlot, Nebbiolo, Sangiovese, Syrah, Tempranillo, etc.
33. Other Rosé – Blend, Table Wine, etc.

### **Class - SWEET WHITE WINES (ABOVE 1.0% RS)**

34. Varietal and Varietal Blend Sweet Wines
35. White Table Wines (Varietal not stated on the label)

### **Class - DESSERT WINES**

36. Port (Iberian varietals/blends only) & Port Style Wines (non-Iberian Varietals)
37. Red Dessert
38. White Dessert
39. All Other Sweet Wines, Non Port

# HOMEMADE WINE COMPETITION

DEPARTMENT HEAD  
MIKE JONES

**ALL HOMEMADE WINE ENTRIES SHOULD BE SUBMITTED AT FAIR OFFICE  
NOT ONLINE**

OPEN TO RESIDENTS OF CALIFORNIA  
WINES MUST BE MADE FROM PRODUCE OF THE SIERRA FOOTHILLS AVA (AMERICAN VITICULTURE  
APPELLATION) INCLUDING THE FOLLOWING COUNTIES:  
AMADOR, CALAVERAS, EL DORADO, MARIPOSA, NEVADA, PLACER, TUOLUMNE OR YUBA COUNTY

**FEES, FORMS & ENTRIES RECEIVED**  
*Use Homemade Wine Entry Form Only*  
**May 16<sup>th</sup> through June 14<sup>th</sup> 9 am to 4 pm**  
at the  
Amador County Fair Office  
18621 Sherwood & School Streets  
Plymouth, CA 95669

Judging: Wednesday, June 22<sup>nd</sup> at 9 am in Spur Building or Pokerville

FAIR'S WINE TASTING: Fri, July 29<sup>th</sup> 7:00 pm - \$40 per person not including Fair admission

## **DIVISION 126 - HOMEMADE WINES**

Entry Fee: \$15.00 per Entry  
No Cash Awards - Ribbons Only

### **BEST OF SHOW HOMEMADE WINES**

*sponsored by Clos Du Lac / Greenstone Winery*

### **BEST WHITE WINE**

*Award sponsored by Amador Vintage Market*

### **BEST RED WINE**

*Own award sponsored by Amador Winemakers Association*

### **BEST ZINFANDEL WINE**

*Own award sponsored by Amador Winemakers Association*

**ELIGIBILITY:** All wines other than those defined as commercial wines or wine made by a winemaker/owner of a bonded winery. **Entry to consist of one (1) bottle of wine 750 ml. & one (1) FULL bottle for Display. "DISPLAY Bottle" should not be wine, but must look like it and be sealed! These are used for display. Bottle must be labeled with all the information using the label sample on the next page.**

#### Class – WHITE GRAPE WINES

1. Chardonnay
2. Sauvignon Blanc
3. Other White Varietals
4. White Varietal Blend (Varieties **MUST BE** stated on label)
5. White Table Wines (Variety **NOT** stated on the label)

#### Class – RED GRAPE WINES

6. Barbera
7. Cabernet Sauvignon
8. Sangiovese
9. Syrah
10. Zinfandel
11. Other Red Varietals
12. Red Varietal Blend (Varieties **MUST BE** stated on label)

13. Red Table Wine (Variety **not** stated on the label)

#### Class – ROSE/PINK & BLUSH WINES

14. Rose, Dry
15. Rose, Sweet

#### Class - DESSERT WINES

16. White Dessert
17. Port Style
18. Red Dessert
19. Late Harvest (**MUST BE** stated on label)

***See Label Sample on next page***

THE AMADOR COUNTY FAIR'S HOME MADE WINE DEPARTMENT ENTRY FORM  
CAN BE FOUND ON THE FAIR WEBSITE  
<https://www.amadorcountyfair.com>

# HOMEMADE WINE DEPARTMENT

---

## DIVISION 126 - HOMEMADE WINE - BOTTLE LABEL

<b>Division: 126</b>	<b>Class:</b> _____
<b>Winemaker:</b> _____	
<b>Wine Variety:</b> _____	
<b>Vintage Year:</b> _____	
<b>County /AVA where produce was grown:</b> _____	

## **DIVISION 127 - HomeMade Wine made with AMADOR GRAPES ONLY** **Wine must be made with Amador grapes only to qualify for the Awards below.**

Entry Fee: \$15.00 per Entry  
No Cash Awards-Ribbons Only  
**See Wine Class on previous page**

<b>HOMEMADE WINE MADE WITH AMADOR COUNTY GRAPES <u>ONLY</u></b>	
<b>Division: 127</b>	<b>Class:</b> _____
<b>Winemaker:</b> _____	
<b>Wine Variety:</b> _____	
<b>Vintage Year:</b> _____	
<b>County /AVA where produce was grown:</b> _____	

The Amador County Fair's Home Made Wine Department Entry Form can be found on the Fair website  
<https://www.amadorcountyfair.com>

# HOMEMADE WINE COMPETITION

---

## DIVISION 128 – HOMEMADE WINE LABEL CONTEST

Entry Fee: \$2.00 per Entry  
No Cash Awards - Ribbons Only  
Limit of two entries per exhibitor

### **BEST OF DIVISION**

1. Label must have been designed for a 2021 homemade wine entry.
2. May be submitted along with, but on separate entry form, from wine entry. Deadline is the same as wine entries.
3. Exhibitor must reside in Amador, Calaveras, El Dorado, Nevada, Placer or Tuolumne Counties.
4. Label must be mounted on 5” x 8” card stock.

### **Class – HOMEMADE WINE LABEL**

1. Homemade Wine Label

The Amador County Fair’s **Home Made Wine Department Entry Form** can be found on the Fair **website**

<https://www.amadorcountyfair.com>

# HOMEBREW BEER COMPETITION

Entries Opens Monday, April 11<sup>th</sup> through June 4<sup>th</sup>

Registration and Information go to [www.brewangels.com](http://www.brewangels.com)

Close: Saturday, June 4<sup>th</sup> at 4 pm

See [www.brewangels.com](http://www.brewangels.com) for Entry Drop Off Locations

Judging: Saturday, June 18<sup>th</sup> at 9 am at Highwater Brewing Company in Lodi

Continental Breakfast served at 8 AM

All other questions, please contact Bill Tarchala, Organizer  
[sharkbrew2@gmail.com](mailto:sharkbrew2@gmail.com) or (559-321-3430)

## BEST OF SHOW

Award sponsored *by* Frank A

### **HOMEBREW RULES:**

American Home Brewers' Association rules shall apply unless they are in conflict with State Rules. AHA/BJCP Rules & Style Guidelines are available through the Fair Office website. Enter according to BJCP Style: (ex. 9A or 9B). Commercially produced beers or those produced at a brewery on premises facility are not eligible, except for the Amador Invitational. **SEE BJCP GUIDELINES for 2015.** No changes.

All beer other than commercial beer. Each entry consists of three (3) Bottles, 12 oz., brown or green glass, free of commercial labels, raised marks of lettering, or other identifying markings that are not part of the official entry label. For Category 22 ONLY, three (3) 7oz. bottles will be accepted. Clear glass bottles will not be accepted. Please attach with a rubber band (no tape or glue) a properly completed official bottle I.D. label. BE SURE that each entry has an accompanying Entry Form, with payment attached. Special attention should be given to the category and style designations so that your brew will be entered and judged according to the proper style. First through Third Place Ribbons per category. Additional awards may give if sponsored. The competition organizer reserves the right to disqualify any entries not meeting the above guidelines or to consolidate classes, if warranted, due to low # of entries in a class.

Entries become the property of the Amador County Fair and will not be returned.

### **DIVISION 128 - HOMEBREW LABEL**

#### **HOMEBREW EXAMPLE LABEL FOR SAMPLE**

Division \_\_\_\_ / Category & Sub Cat \_\_\_\_\_

Name of Brew \_\_\_\_\_

Style Description \_\_\_\_\_

Brew Maker's or Brewery Name \_\_\_\_\_

Home Brew Club or Brewer \_\_\_\_\_  
(Optional)

# HOMEBREW BEER COMPETITION

## DIVISION 128 – HOME BREW

ENTRY FEE: \$10.00 PER ENTRY PER CLASS

No Premiums Offered

LIMIT: UNLIMITED TOTAL ENTRIES

ONE (1) Entry per Sub Category

### Class: 1 Standard American Beer

- 1A American Light Lager
- 1B American Lager
- 1C Cream Ale
- 1D American Wheat Beer

### Class: 2 International Lager

- 2A International Pale Lager
- 2B International Amber Lager
- 2C International Dark Lager

### Class: 3 Czech Lager

- 3A Czech Pale Lager
- 3B Czech Premium Pale Lager
- 3C Czech Amber Lager
- 3D Czech Dark Lager

### Class: 4 Pale Malty European Lager

- 4A Munich Heller
- 4B Festbier
- 4C Helles Bock

### Class: 5 Pale Bitter European Beer

- 5A German Leichtbier
- 5B Kölsch
- 5C German Helles Exportbier
- 5D German Pils

### Class: 6 Amber Malty European Lager

- 6A Märzen
- 6B Rauchbier
- 6C Dunkles Bock

### Class: 7 Amber Bitter European Beer

- 7A Vienna Lager
- 7B Altbier
- 7C Kellerbier
  - Kellerbier: Pale Kellerbier
  - Kellerbier: Amber Kellerbier

### Class: 8 Dark European Lager

- 8A Munich Dunkel
- 8B Schwarzbier

### Class: 9 Strong European Beer

- 9A Doppelbock
- 9B Eisbock
- 9C Baltic Porter

### Class: 10 German Wheat Beer

- 10A Weissbier
- 10B Dunkles Weissbier
- 10C Weizenbock

### Class: 11 British Bitter

- 11A Ordinary Bitter
- 11B Best Bitter
- 11C Strong Bitter

### Class: 12 Pale Commonwealth Beer

- 12A British Golden Ale
- 12B Australian Sparkling Ale
- 12C English IPA

### Class: 13 Brown British Beer

- 13A Dark Mild
- 13B British Brown Ale
- 13C English Porter

### Class: 14 Scottish Ale

- 14A Scottish Light
- 14B Scottish Heavy
- 14C Scottish Export

### Class: 15 Irish Beer

- 15A Irish Red Ale
- 15B Irish Stout
- 15C Irish Extra Stout

### Class: 16 Dark British Beer

- 16A Sweet Stout
- 16B Oatmeal Stout
- 16C Tropical Stout
- 16D Foreign Extra Stout

### Class: 17 Strong British Ale

- 17A British Strong Ale
- 17B Old Ale
- 17C Wee Heavy
- 17D English Barleywine

### Class: 18 Pale American Ale

- 18A Blonde Ale
- 18B American Pale Ale

### Class: 19 Amber and Brown American Beer

- 19A American Amber Ale
- 19B California Common
- 19C American Brown Ale

### Class: 20 American Porter and Stout

- 20A American Porter
- 20B American Stout
- 20C Imperial Stout

### Class: 21 IPA

- 21A American IPA
- 21B Specialty IPA
  - Specialty IPA: Belgian IPA
  - Specialty IPA: Black IPA
  - Specialty IPA: Brown IPA
  - Specialty IPA: Red IPA
  - Specialty IPA: Rye IPA
  - Specialty IPA: White IPA

### Class: 22 Strong American Ale

- 22A Double IPA
- 22B American Strong Ale
- 22C American Barleywine
- 22D Wheatwine

### Class: 23 European Sour Ale

- 23A Berliner Weisse
- 23B Flanders Red Ale
- 23C Oud Bruin
- 23D Lambic
- 23E Gueuze
- 23F Fruit Lambic

### Class: 24 Belgian Ale

- 24A Witbier
- 24B Belgian Pale Ale
- 24C Bière de Garde

### Class: 25 Strong Belgian Ale

- 25A Belgian Blond Ale
- 25B Saison
- 25C Belgian Golden Strong Ale



# HOMEBREW BEER COMPETITION

---

## **Class: 26 Trappist Ale**

- 26A Trappist Single
- 26B Belgian Dubbel
- 26C Belgian Tripel
- 26D Belgian Dark Strong Ale

## **Class: 27 Historical Beer**

- Historical Beer: Gose
- Historical Beer: Kentucky  
Common
- Historical Beer: Lichtenhainer
- Historical Beer: London Brown  
Ale
- Historical Beer: Piwo Grodziskie
- Historical Beer: Pre-Prohibition  
Lager
- Historical Beer: Pre-Prohibition  
Porter
- Historical Beer: Roggenbier
- Historical Beer: Sahti

## **Class: 28 American Wild Ale**

- 28A Brett Beer
- 28B Mixed-Fermentation Sour  
Beer
- 28C Wild Specialty Beer

## **Class: 29 Fruit Beer**

- 29A Fruit Beer
- 29B Fruit and Spice Beer
- 29C Specialty Fruit Beer

## **Class: 30 Spiced Beer**

- 30A Spice, Herb, or Vegetable  
Beer
- 30B Autumn Seasonal Beer
- 30C Winter Seasonal Beer

## **Class: 31 Alternative**

### **Fermentables Beer**

- 31A Alternative Grain Beer
- 31B Alternative Sugar Beer
- 32 Smoked Beer
- 32A Classic Style Smoked Beer
- 32B Specialty Smoked Beer

## **Class: 33 Wood Beer**

- 33A Wood-Aged Beer
- 33B Specialty Wood-Aged Beer

## **Class: 34 Specialty Beer**

- 34A Clone Beer
- 34B Mixed-Style Beer
- 34C Experimental Beer

## ***Mead Styles and Categories***

### **Class: M1 Traditional Mead**

- M1A Dry Mead
- M1B Semi-Sweet Mead
- M1C Sweet Mead

### **Class: M2 Fruit Mead**

- M2A Cyser
- M2B Pyment
- M2C Berry Mead
- M2D Stone Fruit Mead
- M2E Melomel

### **Class: M3 Spiced Mead**

- M3A Fruit and Spice Mead
- M3B Spice, Herb or Vegetable  
Mead

### **Class: M4 Specialty Mead**

- M4A Braggot
- M4B Historical Mead
- M4C Experimental Mead

## ***Cider Styles and Categories***

### **Class: C1 Standard Cider and Perry**

- C1A New World Cider
- C1B English Cider
- C1C French Cider
- C1D New World Perry
- C1E Traditional Perry

### **Class: C2 Specialty Cider and Perry**

- C2A New England Cider
- C2B Cider with Other Fruit
- C2C Applewine
- C2D Ice Cider
- C2E Cider with Herbs / Spices
- C2F Specialty Cider / Perry

# COMMERCIAL MICROBREW

---

**OPENS MAY 30<sup>th</sup> and CLOSES JULY 1<sup>st</sup>**

**REGISTRATION AND INFORMATION go to**  
<http://www.amadorbeercomp.com>

**Judging: Saturday, July 19, 2022 at 9 am Location TBD**  
Continental Breakfast served at 8 AM

**All other questions, please contact Bill Tarchala, Organizer**  
[sharkbrew2@gmail.com](mailto:sharkbrew2@gmail.com) or (559-321-3430)

**See Home Brew for Categories & Sub-Categories.**

## ***BEST OF SHOW***

*Award sponsored by Frank A  
Rosette sponsored by David & Sherri Elliott*

## **COMMERCIAL RULES:**

1. Open to all Nationwide Microbrewers.
2. Entry to consist of a 6 pack or equivalent.
3. Commercial Brews must be brewed on a commercial system by the exhibitor.
4. Brews entered must be available for retail purchase at the time of judging with the exception of "Seasonal Brews" must indicate when available.
5. **See Home Brew for Categories & Sub-Categories.**

## **DIVISION 129 - COMMERCIAL MICROBREW COMPETITION AMADOR INVITATIONAL**

### **ENTRY FEE: \$15.00 PER ENTRY PER CLASS**

No Premiums Offered

LIMIT: UNLIMITED ENTRIES -

Unlimited Entries/Must be different beers (not the same beer, multiple times) per Sub  
Category

Refer to Homebrew Categories

**All other questions, please contact Bill Tarchala, Organizer**  
[sharkbrew2@gmail.com](mailto:sharkbrew2@gmail.com) or (559-321-3430)

# ADULT SPECIAL COMPETITIONS

---

## MISS HALL'S SPECIAL COMPETITION FOODS



### SPECIAL COMPETITION FOODS IN MEMORY OF MISS LOUISE HALL

#### RULES FOR DIVISIONS # 130, 131, & 132

1. Contest open to Amador, El Dorado, Calaveras & Tuolumne Counties except professional bakers & professionals in Home Economics. Exhibitors must be 18 years or older to enter Senior Special Competitions unless a specific class is not offered in Junior Special Competitions. If exhibitor is 17 or under, see Jr. Special Competitions.
2. Winners will be announced after the judging is completed. Winners may be notified for publicity pictures.
3. Indication of physical damage as might occur in transit or handling will not count against the contestant by the judge.
4. Each food entry must be accompanied by the recipe. Please sign the paper and write your address plainly on the back.
5. If items to be judged are not in place by 10:30 am, then it is at the discretion of the department supervisor to accept the item.
6. There will be no public tasting following the competition due to safe food handling practices.
7. PLEASE LABEL CONTAINERS. CONTAINERS ARE TO BE PICKED UP IMMEDIATELY AFTER JUDGING.
8. All measurements must be level (not scant or heaping) cups, tablespoons or fractions of these measurements. Specify exact measurements of pan being used and exact oven temperature. Give length of baking time. All recipes become the property of the Amador County Fair.
9. Contest will be open to the public. The public will be requested to remain quiet and behind marked off section in the building. State Rule III (3) will be enforced.
10. Limit one entry per person per class.
11. Entries must not be cut, unless indicated in instructions.
12. All perishables are to be kept under refrigeration prior to delivery. Limited refrigeration space is available in the Spur Emporium kitchen.
13. Judged Danish for ribbons and then American for premiums.

#### Danish System of Judging

The Danish system of judging is based on established standards of quality for each type of product. In this system each exhibit is judged according to how well it meets that standard rather than how well it compares to other exhibits.

#### SCORE CARD

<u>Quality</u>	<u>Score</u>	<u>Ribbon</u>
1 <sup>st</sup> Group – Superior	92-100%	Blue
2 <sup>nd</sup> Group – Good	84-91%	Red
3 <sup>rd</sup> Group – Average	70-83%	White

# ADULT SPECIAL COMPETITIONS

---

**FORMS & FEES DUE BY: Friday, July 8<sup>th</sup>, 4 pm**  
**ENTRIES IN PLACE: IN THE SPUR EMPORIUM**  
**Pasties, Eclairs, Italian Wedding Cookies, Pilaf & Meat Kabobs**  
**Saturday, July 30<sup>th</sup>, 9:00 – 10:30 am**  
**ENTRIES JUDGES: IN THE SPUR EMPORIUM**  
**Saturday, 30<sup>th</sup>, starting at 11:00 am - To be judged in order as listed.**

## **DIVISION 130 - PIE, CAKE & COOKIE CONTESTS**

Limit: One Entry per class per Exhibitor  
Entry Fees: \$4.00 per Entry  
Premium offered per class 1<sup>st</sup> - \$25

### Class

1. "Pasties" - TRADITIONAL RECIPES ONLY. NO Premade Crust ALLOWED - Homemade Pasties. Traditional spices and/or flavorings.
2. "Pasties" - CREATIVE RECIPES ONLY. GO FOR IT! **BE CREATIVE!!** NO Premade Crust ALLOWED. Homemade Pasties.
3. "Eclairs" - TRADITIONAL RECIPES ONLY. NO PRE-PACKAGED MIXES All desserts must be homemade.
4. "Eclairs"- CREATIVE RECIPES. All desserts must be homemade - Start with pre-packaged mix OR a creative scratch recipe. Be Creative!
5. "Italian Wedding Cookies" - COOKIES MUST BE HOMEMADE! Any variations are permissible. All cookies must be oven baked. NO PACKAGED MIXES ALLOWED. Quantity: (6)

---

## **DIVISION 131 - PILAF**

Entry Fee: \$4.00 per entry  
Premium offered 1<sup>st</sup> Place - \$25

### Class

1. "PILAF"- Make this recipe your own. BE CREATIVE!!!

---

## **DIVISION 132 - MEAT KABOBS**

Gentlemen Only

Entry Fee: \$4.00 per entry  
Limit: One entry per Exhibitor  
Premium offered 1<sup>st</sup> Place - \$25

### Class

1. "MEAT KABOBS"- Make this recipe your own, COULD BE BEEF, CHICKEN, PORK, VENISON OR LAMB! BE CREATIVE WITH YOUR SEASONING & SPICES!!! 6 pieces.

---

# JELLY

**FORMS & FEES DUE BY: Friday, July 8<sup>th</sup> 4 pm**  
**ENTRIES IN PLACE: Monday, July 25<sup>th</sup>, 10 am – 4 pm & Tuesday, July 26<sup>th</sup>, 7 am – 9 am**  
**in POKERVILLE HALL**  
**ENTRIES JUDGES: Friday 29<sup>th</sup>, Starting at 10 am**  
**ENTRIES RELEASED: Monday, August 1<sup>st</sup>, 10 am – 4 pm**

## **DIVISION 133 - WINE JELLY**

Entry Fee: \$4.00 per entry  
Limit: One entry per Exhibitor  
Premium offered 1<sup>st</sup> Place - \$25

### Class

1. "WINE" JELLY made from Amador County WINE Grapes. All entries in this division must be canned by the exhibitor within one year of the opening date of the Fair. A standard jar or container specifically designed for canning purposes must be used. No paraffin seals. All canning must be in sealed jars and processed in a boiling water bath. Entry must consist of ONE (1) Jar. Clear glass jars, standard ½ pint, MUST HAVE SEALED LIDS.

# ADULT SPECIAL COMPETITIONS

## CRAFTS

**FORMS & FEES DUE BY: Friday, July 8<sup>th</sup>, 4 pm**  
**ENTRIES IN PLACE: Saturday, July 23<sup>rd</sup>, 10 am – 4 pm in POKERVILLE HALL**  
**ENTRIES JUDGES: Sunday, July 24<sup>th</sup>, Starting at 10**  
**ENTRIES RELEASED: Monday, August 1<sup>st</sup>, 10 am – 4 pm**

### DIVISION 134 – GIFT BASKET

Entry Fee: \$4.00 per entry  
Limit: One entry per Exhibitor  
Premium offered 1<sup>st</sup> Place - \$25

#### Class

1. Themed Gift Basket – Make an “AROUND the World in 4 Days!” gift basket. Use your imagination. Must be able to view the contents. Judged on overall creativity.

### DIVISION 135 – YOUR COUNTRIES FLAG

Entry Fee: \$4.00 per entry  
Limit: One entry per Exhibitor  
Premium offered 1<sup>st</sup> Place - \$25

#### Class

1. YOUR COUNTRIES FLAG - Use your imagination. You can decorate them with anything, from any or multiple countries or tribes, representing your individual heritage. Make them Bright, Beautiful, Sparkle and Creative!!! Size not to be larger than 24 x 36.

### DIVISION 136 – COLLAGE OF YOUR WORLD TRAVELS

Entry Fee: \$4.00 per entry  
Limit: One entry per Exhibitor  
Premium offered 1<sup>st</sup> Place - \$25

#### Class

1. Your World Travel photos - No exhibit shall exceed 24” X 24”. Judged on overall creativity.

#### **“PRETTY IN PINK AWARD RIBBON”**

*Memorial Craft Award In memory of Kathy Hutchison*

Open to Exhibits entered in Adult Special Competition Crafts, Senior Crafts & Senior Special Education classes already entered are eligible. No entry fee is needed.

TO QUALIFY YOUR ENTRY NEEDS ONLY TO BE PINK OR HAVE PINK IN IT.

A rosette ribbon will be awarded

Sponsored by friends, co-workers and fair staff who have worked with you for many years.

## FLORICULTURE

**FORMS & FEES DUE BY: Friday, July 23<sup>rd</sup>, 4 pm**  
**ENTRIES IN PLACE: Thursday, July 28<sup>th</sup>, 7 am – 9 am in THE FLORICULTURE BUILDING**  
**ENTRIES JUDGES: Thursday, July 28<sup>th</sup>, Starting at 10 am**  
**ENTRIES RELEASED: Monday, August 1<sup>st</sup>, 10 am – noon**

### DIVISION 137 - FLORICULTURE **“AROUND THE WORLD IN 4 DAYS”**

Entry Fee: \$4.00 per entry  
Limit: One entry per Exhibitor  
Premium offered 1<sup>st</sup> Place - \$25

#### Class

1. **“AROUND THE WORLD IN 4 DAYS”** Must be planted in a wicker basket and include a “Hot Air Balloon” and must be no larger than 18” x 18” inches. Exhibitor must design and plant in the container with purchased or homegrown flowers or plants. Decorations are optional. Exhibit will be judged on appearance only. Must be able to be lifted by 1 person.

# ADULT SPECIAL COMPETITIONS

---

## DIVISION 138 – SCARECROWS

**FORMS & FEES DUE BY: Friday, July 8<sup>th</sup> 4 pm**  
**ENTRIES IN PLACE: Saturday, July 23<sup>rd</sup>, 10 am – 4 pm in SPUR EMPORIUM**  
**ENTRIES JUDGES: Sunday, July 24<sup>th</sup>, (Closed Judging)**  
**ENTRIES RELEASED: Monday, August 1<sup>st</sup>, 10 am – 4 pm**

Entry Fee: \$4.00 per entry  
Limit: One Entry per class per Exhibitor  
Premium Offered Per Class 1<sup>st</sup> - \$25

Open to individuals, groups, businesses, clubs or organizations and families. Exhibits **MUST BE** self-supporting and fireproof. It is the responsibility of the entrant to pick up tags from Entry Department. Scarecrows should be sturdy framed and no less than 3' in height. Decorate; use your imagination.

Class

2. Traditional

Class

3. Theme – “Around the World In 4 Days!”

---

## DIVISION 139 – PLEIN AIR PAINTING

Entry Fee: \$4.00 per entry  
Limit: One Entry per class per Exhibitor  
Premium Offered Per Class 1<sup>st</sup> - \$25

Plein Air Painting is painting done outdoors. Painters work by natural light and are influenced by atmospheric conditions of weather and culture. This approach was made famous by the 19<sup>th</sup> century Barbizon School in France and perfected in the 20<sup>th</sup> century by the Taos Society of Artists in New Mexico.

RULES FOR PLEIN AIR PAINTING:

1. Bring in your own art supplies and be ready to paint on location, within the Fairgrounds. No matting or framing of art is allowed. Maximum size 16" x 20". Only artwork created on the Fairgrounds during the Fair will be eligible for competition. Artist's choice of acrylic, oils, pastels, watercolor.
2. Dates, July 28<sup>th</sup> - July 31<sup>st</sup>. Check in at Entry Office after 9:00 am on the day you plan to paint. All exhibitors must pick up their exhibitor tag and a one-day pass at the entry office for admission. Your canvas must be stamped by Fair staff prior to beginning work. After completion of your painting, deliver to the Entry Office by Sunday July 31<sup>st</sup> at 2:00 pm. Artwork must be affixed to a firm support board and displayed on your own easel. Entries released on Monday, August 1<sup>st</sup>, between 10:00 am and 4:00 pm.
3. Awards presentation at 4:00 pm on Sunday, July 31<sup>st</sup> in the Art Department. All artworks will be on display for the remainder of the Fair.

Class

1. Plein Air Painting

---

## DIVISION 140 – FAIR TIME PHOTO

Entry Fee: \$4.00 per entry  
Limit: One Entry per class per Exhibitor  
Premium offered per class 1<sup>st</sup> - \$25

Some of the best photos are taken at the Fair (action, animals, kids, etc.). We want to see your pictures of the 2022 Fair! Judging will be based on originality, composition, creativity and representation of the 2022 Amador County Fair. Only photos created on Fairgrounds during the Fair will be eligible for competition. Artist's choice of camera (digital, cell phone, 35 mm, disposable).

RULES FOR FAIR TIME PHOTO:

1. Adult and or Junior amateur or professional. An Adult or Junior Entry form must be completed at the time photo is dropped off at the Entry Office. No pre-registration is required.
2. Bring your own camera and be ready to shoot on location, within the Fairgrounds anytime during the fair. Develop your photo (your choice). No matting or framing of photo is allowed. Minimum photo size: 5" x 7"; maximum photo size: 8-1/2" x 11". Must be printed on quality paper.
3. Check in at Entry Office after 9:00 am on the day you plan to take your photo. After completion of your photo, deliver to the Entry office Sunday, July 31<sup>st</sup> at 2:00 pm by.
4. Awards presentation at 4:00 pm on Sunday, July 31<sup>st</sup> in the Art Department. All photos will be on display for the remainder of the Fair.

Class

1. Junior 17 & under

Class

2. Adults 18 & Over

# ADULT SPECIAL EDUCATION

---

The Amador County Fair supports the concept that no physical or mental disability need limit the human potential to create. The following Departments have offered the opportunity to exhibitors who have assisted works. Disabled exhibitors who produce works unassisted may compete in each Department's individual competition. Refer to noted pages for more information regarding the class. Use a separate entry form for each Department's entries. Open to Amador, Calaveras, El Dorado, and Tuolumne Counties.

**FORMS & FEES DUE BY: Wednesday, July 8<sup>th</sup>, 6 pm**  
**Entries in Place: Please see Pages listed by classes for**  
**entries Received/Judged dates**  
**POKERVILLE HALL**  
**Entries Released: Monday, August 1<sup>st</sup>, 10 am - 4 pm**

## **DIVISON 144 - 18 YEARS AND OVER**

No Entry Fee

Limit: Two entries per class Per Exhibitor  
Ribbons Only - Judged Danish

### Class

1. Art (see Page 96-100)
2. Photography (see Page 100-109)
3. Crafts (see Page 92-95)

### Class

4. Clothing & Textiles (see Page 88-89)
5. Baked Foods (see Page 82-83)
6. Group Project

---

## **THE ARC OF AMADOR & CALAVERAS COUNTIES**

### **Mission Statement**

The Arc of the United States advocates for the rights and full participation of all children and adults with intellectual and developmental disabilities. Together with our network of members and affiliated chapters, we improve systems of supports and services; connect families; inspire communities and influence public policy.

Get involved with your community Arc program.

# 1977

The Arc of Amador and Calaveras Counties

75 Academy Drive  
Sutter Creek, CA 95685  
(209) 267-5978

REMEMBER TO THANK YOUR SPONSORS

# FEATURE EXHIBITS

## FEATURE EXHIBITS

Note: Feature Booths are offered to the previous exhibitor for renewal first.  
If there is a non-renewal, exhibit booths are offered on a first come basis.

**FORMS & FEES DUE BY: Friday, May 20<sup>th</sup>, 4 pm**  
**Booths can be started on Saturday, July 16<sup>th</sup>, – and must be completed by Tuesday, July 26<sup>th</sup>, 9 pm**  
**Building/Booths assessable from 8 am – 7 pm - July 16<sup>th</sup> to July 26<sup>th</sup>**  
**EXHIBITS JUDGED ON: Thursday, July 28<sup>th</sup>, 10 am**  
**Entries Released: Monday, August 1<sup>st</sup>, 10 am – 4 pm**

- A. The Feature Exhibit Booth shall be limited to one (1) entry.
- B. All materials used must be FIREPROOF or sprayed with fire retardant.
- C. Exhibitors must make arrangements to replace all fruits and vegetables that deteriorate during the Fair. Exhibitors may have access to their exhibits from 8 AM to 10 AM daily during fair.
- D. Booth materials must be contained within the area of the booth platform. Entire platform may be covered with decorations if desired.
- E. IT IS THE RESPONSIBILITY OF THE GROUP OR ORGANIZATION TO PICK UP THEIR BOOTH TAGS FROM THE ENTRY OFFICE.

### **DIVISION 145 – FEATURE EXHIBITS**

American System of Judging

Entry Fee: \$25.00

Premiums Offered Per Class

#### **COMMUNITIES**

1 <sup>st</sup>	2 <sup>nd</sup>	3 <sup>rd</sup>	4 <sup>th</sup>	5 <sup>th</sup>
\$100	\$75	\$50	\$25	\$10

#### **ORGANIZATIONS**

1 <sup>st</sup>	2 <sup>nd</sup>	3 <sup>rd</sup>	4 <sup>th</sup>	5 <sup>th</sup>
\$100	\$75	\$50	\$25	\$10

Class

1. Communities of Amador County
2. Organizations of Amador County

<b>Scorecard for Feature Exhibit</b>	
<b>Quality</b>	<b>30%</b>
<b>Educational Value</b>	<b>20%</b>
<b>Theme</b>	<b>20%</b>
<b>Decoration &amp; Arrangement</b>	<b>15%</b>
<b>Creativity</b>	<b>10%</b>
<b>Variety</b>	<b>5%</b>
<b>Total</b>	<b>100%</b>



# CREATIVE & HOME ARTS

DEPARTMENT SUPERVISOR  
DIANNE BENNETT

Open to Amador, Calaveras, El Dorado & Tuolumne Counties

**SWEEPSTAKES FOR BAKED FOODS**  
*Sponsored by Frank A*

1<sup>st</sup> - \$25      2<sup>nd</sup> - \$15      3<sup>rd</sup> - \$10

## BAKED FOODS & CONFECTIONS

**FORMS & FEES DUE BY: Friday, July 8<sup>th</sup>, 4 pm**  
**Entries in Place: Monday, July 25<sup>th</sup>, 3 pm – 6 pm & Tuesday, July 26<sup>th</sup>, 7 am – 9 am**  
**in POKERVILLE HALL (Open Judging)**  
**Entries Judged: Tuesday, July 26<sup>th</sup>, 10 am (Open Judging)**  
**Entries Released: Monday, August 1<sup>st</sup>, 10 am – 4 pm**

### BEST OF SHOW AWARD

*Award sponsored by Mother Lode Real Investors*

Entry Fee: \$2.00

Limit: 2 Entries per class per Exhibitor

Ribbons – 1<sup>st</sup> thru 3rd

### DIVISION 150 - BAKING POWDER BREAD

(1/2 Loaf – the cut to display top & bottom, approx. ½ lb.)

Class

1. Banana Bread
2. Biscuits (plain white, 4)
3. Indian Fry Bread (2)
4. Corn Bread
5. Zucchini Bread

Class

6. Nut Bread
7. Coffee Cake
8. Muffins (4)
9. Any other not listed above, specify on entry form

### DIVISION 151 - YEAST BREADS

(1/2 Loaf – the cut to display top & bottom, approx ½ lb.)

Class

1. Cinnamon Rolls (4)
2. Rolls (4)
3. Sweet Rolls (4)
4. Sweet Bread or Raisin Bread
5. Whole Wheat Bread (over ½ whole wheat flour)
6. White Bread

Class

7. French Bread
8. Indian Bread (2)
9. Serbian Cheese Bread
10. Muffins (4)
11. Any other not listed above, specify on entry form

### DIVISION 152 - LAYER CAKES & CUPCAKES, FROSTED

(Cakes – ½ cake; Cupcakes – 4)

#### **BEST OF DIVISION**

*Award sponsored by Frank A*

Class

1. Chocolate, frosted
2. Upside Down Cake

Class

3. Cupcakes
4. Any other not listed above; specify on entry form

### DIVISION 153 - LOAF OR POUND CAKE

(1/3 Cake)

Class

1. Vegetable
2. Chiffon
3. Banana
4. Bundt
5. Fruit
6. Pound (plain)
7. Potato

Class

8. Prune
9. Spice
10. Sponge
11. Cheesecake
12. Any other not listed above, specify on entry form

# CREATIVE ARTS

---

## **DIVISION 154 - COOKIES & BROWNIES**

(All cookies must be in small baggies; # of cookies = 6)

### Class

1. Bar – fruit, nuts or both, unfrosted
2. Bar – fruit, nuts or both, frosted
3. Chocolate Chip
4. Drop – plain or fruit
5. Drop – nut
6. Fancy
7. Filled
8. Gumdrop
9. Icebox
10. Macaroon
11. Peanut Butter
12. Pressed

### Class

13. Rolled - frosted or unfrosted
14. Biscotti
15. Oatmeal
16. Brownies - unfrosted
17. Brownies - frosted
18. Brownies - light, unfrosted
19. Brownies - light, frosted
20. Stuffed Pastry
21. Cake Pops
22. Cookie Pops
23. Any other not listed above; specify on entry form

---

## **DIVISION 155 - PIES & COBLERS**

(One 4" to 9" pie)

### **BEST OF DIVISION**

*Award sponsored by Sobon Estate/Shenandoah Vineyards*

### Class

1. Apple, two crust
2. Berry, two crust
3. Any other two-crust pie not listed above; specify
4. Lemon, one crust

### Class

5. Sweet Potato pie
6. Any other one-crust pie not listed above; specify
7. Cobbler, any fruit of choice

---

## **DIVISION 156 - CONFECTIONS**

(1/4 pound)

### Class

1. Butter Brickle
2. Caramels
3. Chocolate, dipped
4. Candied peel
5. Divinity
6. English Toffee
7. Fondants
8. Fruit, candies
9. Rocky Road

### Class

10. Fudge
11. Peanut Brittle
12. Pecan Roll
13. Penuche
14. Sugar Nuts
15. Truffles
16. Truffles with Liqueur
17. Any other not listed above; specify on entry form

---

## **DIVISIONS 157 – 159**

*Not Eligible for Best of Show*

Entry Fee: \$2.00

Limit: 2 Entries per Class per Exhibitor

Ribbons – 1<sup>st</sup> thru 3<sup>rd</sup>

## **DIVISION 157 - DECORATED CAKES**

### **BEST OF DIVISION**

*Award sponsored by Sobon Estate/Shenandoah Vineyards*

A Styrofoam or cardboard form may be used, provided the shape is one that could reasonably be achieved through baking. Cakes to be home decorated by the exhibitor.

### Class

1. Decorated cakes for special occasions
  2. Decorated cakes - 2022 Fair Theme - "Around the World in 4 Days!"
-

# CREATIVE & HOME ARTS

## DIVISION 158 - CONTAINER & CONTENTS

### Class

1. COOKIE JAR – 4 kinds of homemade cookies, 4 each (16 total) in transparent container with lid, will be judged on originality and contents of container. (Put one additional, of each cookie type, in a separate baggie and tape to jar for judges to sample).

### Class

2. DECORATED CANDY BOX WITH CANDY - One entry per class. Open to individuals, families or groups. Candies must fill the box. There must be at least 4 different types of homemade candy. The box must have a removable/replaceable lid. Decorations may be glued or tied to box. No stands, trays or bases allowed. Bring one of each kind of candy on a small plate for judges to taste.

### CANDY BOX SCORECARD

Appearance & Originality	40%
Appetite, Texture, Flavor	40%
<u>Appeal</u>	<u>20%</u>
TOTAL	100%

## DIVISION 159 - PICNIC BASKET

1. PICNIC BASKET – **Fair Theme** – “Around the World in 4 Days!” Basket to contain 2 varieties each of bread, jam and jelly. Must contain picnic items for two: Plates, cups, utensils, tablecloth and napkins. Items will not be tasted; judging will be on appearance and originality. Judging will be American system. All other rules pertaining to the Home Arts Department apply.

**NOT ELIGIBLE FOR BEST OF SHOW**

## **PRESERVED & DRIED**

Open to Amador, Calaveras, El Dorado & Tuolumne Counties

<b>SWEEPSTAKES FOR PRESERVED &amp; DRIED FOODS</b> <i>sponsored by Frank A</i>		
<b>1<sup>st</sup> - \$25</b>	<b>2<sup>nd</sup> - \$15</b>	<b>3<sup>rd</sup> - \$10</b>

Entry Fee: \$2.00

Limit: 2 DIFFERENT entries per class per Exhibitor

Ribbons – 1<sup>st</sup> thru 3<sup>rd</sup>

### **BEST OF SHOW AWARD**

*Award sponsored by Teresa's Place, Jackson*



### PRESERVED & DRIED RULES:

1. All entries in these divisions must be home prepared and canned or packed by the exhibitor within one year of the opening date of the Fair. Specify on entry form the type of product and process (i.e. apricot jam, pectin method, boiling-water bath). All products being considered for premium awards, which have not otherwise been eliminated from consideration, will be opened.
2. ENTRIES: Each entry must consist of one (1) jar. Judged entries can be picked up at the end of the Fair. Each entry must be from a different batch, or the same product preserved by a different method. **No products requiring refrigeration will be accepted.**
3. LABELING: LABELING: All entries must be labeled securely on top of all jars. Label must include: the product name, the date of preservation, the canning method used (Example: use 'WB' for water bath canning, 'ASC' for

# CREATIVE & HOME ARTS

atmospheric steam canning, and 'PC' for pressure canning), and the Division and Class. **The name of the exhibitor must not be on the label.**

4. **CONTAINERS:** Standard jars (containers specifically designed for canning purposes) must be used. New lids and screw rings must be used on all jars so designed. Glass-topped containers, such as Weck canning jars, and Tattler Reusable Canning Lids will be accepted. Fruits, vegetables & pickles may be in 1-pint or quart jars. Jams, jellies, preserves or marmalades may be in ½-pint or 1-pint jars. No paraffin seals. All canning must be in sealed jars, unless otherwise stated.

## PRESERVED & DRIED RULES CONTINUED:

5. **RAW UNFLAVORED HONEY:** Should not be heat-processed; state primary flavor.
6. **DRIED PRODUCTS:** Must be in jars.
7. **HEALTH REQUIREMENTS FOR PRESERVED FOODS:** All low-acid foods (all vegetables, meats, poultry and fish) must be canned under pressure. Low-acid fruit, such as figs, must be made more acidic by adding lemon juice as directed in the *USDA Complete Guide to Home Canning*. High-acid foods, including acidified tomatoes, fruits, pickles and relishes, may be canned in boiling water bath canner or atmospheric steam canner. **Food preserved using the open-kettle, inversion, oven or microwave methods of canning will not be accepted.** Dehydrated meats, including jerky, must have recipe attached to entry indicating temperature used to dry meats. USDA research has shown that dried meats must reach a temperature of 165° to kill bacteria.

## LIST OF RECOMMENDED CONTAINERS:

- Fruits & Vegetables – clear glass, pint, wide- or narrow-mouth jars.
- Jellies, Jams, Preserves & Fruit Spreads – clear glass, standard ½-pint jars (sealed lids).

## TIPS TO PONDER

### The difference between Jams, Preserves, Jellies, and Fruit Spreads

- **Jams** are made with mashed fruits, sugar and they sometimes have added pectin
  - **Preserves** are made with whole fruit or coarse pieces, sugar and usually pectin.
  - **Fruit Spreads** (or spreadable fruit) are 100% fruit with no sugar added, although they usually have added pectin.
  - **Jellies** are made from strained fruit juice, sugar and sometimes pectin. Jellies have a clear, shimmery appearance.
- Reference – Quick Cooking Magazine

## PRESERVED

**FORMS & FEE DUE BY: Friday, July 8<sup>th</sup>, 4 pm**  
**Entries in Place: Monday, July 25<sup>th</sup>, 3 – 6 pm & Tuesday, July 26<sup>th</sup>, 7 am – 9 am in POKERVILLE HALL**  
**Entries Judged: Friday, July 29<sup>th</sup>, 10 am (Open Judging)**  
**Entries Released: Monday, August 1<sup>st</sup>, 10 am – 4 pm**

Entry Fee: \$2.00

Limit: 2 Different Batch entries per class per Exhibitor

Ribbons – 1<sup>st</sup> thru 3<sup>rd</sup>

### **DIVISION 160 - "WEIGHT WATCHERS"**

Glass Container – 1/2 Standard Pint Recommended

#### Class

1. Bottled Juice
2. Canned Fruit
3. Vegetables

#### Class

4. Jam
5. Jelly
6. Others

### **DIVISION 161 – BOTTLED JUICES**

Glass Container – 1/2 Standard Pint Recommended

#### Class

1. Berry Juice
2. Fruit Juice
3. Grape Juice

#### Class

4. Tomato Juice
5. Any other not listed above; specify on entry form

### **DIVISION 162 – CANNED FRUIT**

Glass Container – 1/2 Standard Pint Recommended

#### Class

1. Applesauce
2. Apricots, halves
3. Apricots, whole

#### Class

4. Cherries
5. Grapes
6. Peaches, Freestone

# CREATIVE ARTS

- 
7. Peaches, other  
8. Pears, any

9. Plums  
10. Any other not listed above; specify on entry form
- 

## **DIVISION 163 – CANNED VEGETABLES & MEATS**

Glass Container – 1 Standard Pint Recommended

Class

1. Tomatoes  
2. Vegetables, any other

Class

3. Any other not listed above; specify on entry form
- 

## **DIVISION 164 – PICKLES & RELISHES**

Glass Container – 1 Standard Pint Recommended

### **BEST OF DIVISION**

*\$50 Premium sponsored by The Willow Springs Whist Card Club in Memory of Doris Helms & Sue Freeman*

Class

1. Bread and Butter Pickles  
2. Chili Sauce  
3. Chow Chow  
4. Chutney  
5. Cucumbers, sour  
6. Cucumbers, sweet  
7. Dill Pickles  
8. Green Tomato Pickles  
9. India Relish

Class

10. Mixed Pickles  
11. Olives  
12. Tomato Catsup  
13. Wax Peppers  
14. Any other pickle not listed above; specify on entry form  
15. Any other relish not listed above; specify on entry form
- 

## **DIVISION 165 – JAMS**

Glass Container – 1/2 Standard Pint Recommended

Class

1. Apricot  
2. Apricot and Pineapple  
3. Blackberry  
4. Boysenberry  
5. Fig  
6. Grape  
7. Peach

Class

8. Pear  
9. Plum  
10. Raspberry  
11. Strawberry  
12. Pepper Jam  
13. Any combination of two of the above flavors  
14. Any other not listed above, specify on entry form
- 

## **DIVISION 166 - JELLIES**

Glass Container – 1/2 Standard Pint Recommended

Class

1. Apple  
2. Blackberry  
3. Gooseberry  
4. Grape  
5. Mint  
6. Mixed Flavors  
7. Plum

Class

8. Pomegranate  
9. Quince  
10. Strawberry  
11. Pepper Jelly  
12. Kiwi  
13. Any combination of two of the above flavors  
14. Any other not listed above; specify on entry form
- 

## **DIVISION 167 – PRESERVES**

Glass Container – 1/2 Standard Pint Recommended

Class

1. Apricot  
2. Cherry  
3. Peach  
4. Pear

Class

5. Plum  
6. Strawberry  
7. Any other not listed above; specify on entry form
- 

## **DIVISION 168 – MARMALADES & BUTTERS**

Glass Container – 1/2 Standard Pint Recommended

Class

1. Apple Butter  
2. Orange Marmalade  
3. Pear Marmalade

Class

4. Plum Butter  
5. Any other Butter not listed above, specify on entry form

# CREATIVE & HOME ARTS

6. Any other Marmalade not listed above; specify on entry form

## **DIVISION 169 - FRUIT SYRUPS**

Glass Container – 1/2 Standard Pint Recommended

Class

1. Blackberry
2. Strawberry

Class

3. Any other not listed above; specify on entry form

## **DIVISION 170 – MISCELLANEOUS**

Glass Container – 1/2 Standard Pint Recommended

Class

1. Salsa
2. Vinegar – specify on entry form
3. Honey
4. BBQ Sauce

Class

5. Olive Oil
6. Mustard
7. Ketchup
8. Other; specify on entry form

## **DRIED FOODS**

**FORMS & FEE DUE BY: Friday, July 8<sup>th</sup>, 4 pm**  
**Entries in Place: Monday, July 25<sup>th</sup>, 3 – 6 pm & Tuesday, July 26<sup>th</sup>, 7 am – 9 am in POKERVILLE HALL**  
**Entries Judged: Friday, July 29<sup>th</sup>, 10 am (Open Judging)**  
**Entries Released: Monday, August 1<sup>st</sup>, 10 am – 4 pm**

Entry Fee: \$2.00

Limit: 2 Entries per class per Exhibitor

Ribbons – 1<sup>st</sup> thru 3<sup>rd</sup>

### DRIED FOODS RULES

- A. Exhibits must be accurately labeled, indicating variety of fruit, vegetable, meat or seasoning and method used in preparation (dehydrator, oven, sun, sulphured, etc.) Label is to be taped to the bottom of the jar. See sample under Preserved Foods.
- B. Meats: Including jerky, must have recipe attached to entry indicating temperature used to dry meats, USDA research has shown that dried meats must reach a temperature of 165° F to kill bacteria.
- C. Dried foods must be packaged in airtight glass jars stated in each division.
- D. The exhibitor must dry all entries in these divisions within one year of the opening date of the Fair.

### DRIED FOODS SCORECARD

Attractiveness	30%
Color	20%
Smell	30%
<u>Texture</u>	<u>20%</u>
TOTAL	100%

## **DIVISION 171 - DRIED FOODS**

Pint Jar Display Recommended

Class

1. Apples; quarters or rings
2. Apricots; specify variety on entry form
3. Figs; specify variety on entry form
4. Grapes; specify variety on entry form
5. Peaches; specify variety on entry form
6. Pears; specify variety on entry form

Class

7. Prunes; specify variety on entry form
8. Any meat or fish; specify variety on entry form
9. Dried Food; any other not listed above, specify variety on entry form
10. Any herb or seasoning; specify on entry form

# CREATIVE & HOME ARTS

## CLOTHING & TEXTILES

Open to Amador, Calaveras, El Dorado & Tuolumne Counties

**FORMS & FEE DUE BY: Friday, July 8<sup>th</sup>, 4 pm**  
**Entries in Place: Saturday, July 23<sup>rd</sup>, 10 am – 4 pm in POKERVILLE HALL**  
**Entries Judged: Sunday, July 25<sup>th</sup>, 9 am (Open Judging)**  
**Entries Released: Monday, August 1<sup>st</sup>, 10 am – 4 pm**

### SWEEPSTAKES FOR CLOTHING & TEXTILES

Sponsored by Frank A

1<sup>st</sup> - \$25      2<sup>nd</sup> - \$15      3<sup>rd</sup> - \$10

Entry Fee: \$2.00

Limit: 2 Entries per Class per Exhibitor

Ribbons – 1<sup>st</sup> thru 3<sup>rd</sup>

#### CLOTHING & TEXTILES RULES:

- The exhibitor must have home produced all entries in this Department within one year of the opening date of the Fair to be eligible for premium awards.
- Cleaned and Pressed: Soiled articles will be disqualified, and will not be displayed.
- Other: Items that have a class definition may NOT be entered in this division.
- Item must have been completed within the last year.

#### **BEST OF SHOW**

Sewing Divisions 172

*Award sponsored by Mother Lode Real Inventors*

#### **BEST OF SHOW**

Knitting & Crocheting - Divisions 174 & 175

*Award sponsored by Mother Lode Real Inventors*

#### **BEST OF SHOW**

Stitchery - Divisions 176 & 177

*Award sponsored by Jeff Holman Auto Center, Inc.*

#### **BEST OF SHOW**

Afghans - Division 182

*Award sponsored by Mother Lode Real Inventors*

#### **BEST OF SHOW**

Weaving & Hand Spun Yarn Articles

Divisions 179 & 180

*Award sponsored by Del Oro Spinners & Weavers Guild*

---

### **DIVISION 172 - SEWING-WEARING APPAREL**

#### Class

- Baby outfit
- Vest
- Pants or Shorts or Capris
- Shirt or Blouse

#### Class

- Dress
- Coat or Jacket, lined or unlined
- Costume
- Any other not listed above; specify on entry form

---

### **DIVISION 173 - SEWING - OTHER**

#### Class

- Placemats with napkins, set of two
- Pillow
- Blanket (not quilt specifications)

#### Class

- Christmas item
- Toy
- Any other not listed; specify on entry form

---

### **DIVISION 174 - CROCHETED**

#### Class

- Lace, 1 yd. minimum, separate or attached to item
- Doily, under 15"
- Doily, 16" or larger
- Household items (tablecloth, pillow covers, etc.)

#### Class

- Baby garments
- Vest, Stole or poncho
- Sweater, cardigan or pullover
- Any other not listed above; specify on entry form

# CREATIVE & HOME ARTS

---

## DIVISIONS 175 – KNITTED

### Class

1. Baby garments
2. Sweater, child
3. Baby accessories
4. Vest, child or adult
5. Sweater, cardigan, adult
6. Sweater, pullover, adult
7. Stole, poncho, shawl

### Class

8. Hat
  9. Socks
  10. Accessories
  11. Machine knits
  12. Original design
  13. Scarves
  14. Any other not listed above; specify on entry form
- 

## DIVISION 176 - CREWEL-EMBROIDERY, BARGELLO, NEEDLEPOINT & CANDLEWICK

### Class

1. Tablecloth, card table size or larger
2. Pillow
3. Wall hanging, framed or unframed, under 9”
4. Wall hanging, framed or unframed, 9” to 16”
5. Wall hanging, framed or unframed, over 16”
6. On wearing apparel (apparel need not be made by exhibitor) – hand embroidered

### Class

7. On wearing apparel (apparel need not be made by exhibitor) – machine embroidered
  8. Picture
  9. Any other - Bargello, Needlepoint, Candlewick, Embroidery, Crewel
- 

## DIVISION 177 - CROSS STITCH

### Class

1. Counted cross stitch, any item
2. Stamped, any item
3. Counted cross stitch, original design, any item
4. Wall hanging, framed or unframed, under 9”

### Class

5. Wall hanging, framed or unframed, 9” to 16”
  6. Wall hanging, framed or unframed, over 16”
  7. Christmas item
  8. Any other not listed above; specify on entry form
- 

## DIVISION 178 – AFGHANS

### **BEST OF DIVISION**

*\$50 Premium sponsored by The Willow Springs Whist Card Club in Memory of Doris Helms & Sue Freeman*

### Class

1. Knitted, baby afghan
2. Knitted, pieced
3. Knitted, other than listed, specify on entry form
4. Crocheted, baby afghan
5. Crocheted, granny square

### Class

6. Crocheted, ripple
  7. Crocheted, pieced
  8. Crocheted, other than listed; specify on entry form
- 

## DIVISION 179 – WEAVING

### Class

1. Baskets
2. Article of clothing
3. Shawls and scarves
4. Outerwear
5. Vests

### Class

6. Blankets, any size
  7. Rugs and wall hangings
  8. Household items
  9. Any other not listed above; specify on entry form
- 

## DIVISION 180 - HAND SPUN YARN ARTICLES

### **BEST OF DIVISION**

*Award Sponsored By Lissy's Zoo*

### Class

1. Article of clothing, knitted
2. Article of clothing, crocheted
3. Article of clothing, hand-woven
4. Accessories
5. Article 50% = hand-spun and commercial yarn

### Class

6. Skein, single ply
  7. Skein, wool, 2 or more ply
  8. Skein, any other fiber, 2 or more ply
  9. Skein, novelty at least 50% hand-spun
  10. Any other not listed above; specify on entry form
-



# CREATIVE & HOME ARTS

## DIVISION 181 – MISCELLANEOUS

### Class

1. Hooked rug – from kit or original design, 4' x 4'
2. Felted items
3. Tatted, any item

### Class

4. Combination of any one item to be judged on the techniques from the Clothing & Textiles Department, such as sewing and cross-stitch
5. Appliquéd item – article may be purchased, appliqué must be sewn not glued

## DIVISION 182 - SENIOR CITIZEN (65 & OVER)

### Class

1. Any crocheted item
2. Any knitted item

### Class

3. Any wearing apparel, not knitted or crocheted
4. Any home furnishing, not knitted or crocheted

## DIVISION 183 - “FAIR THEME” ITEMS

### **“Around the World in 4 Days!”**

Entry Fee: \$2.00

Limit: Two (2) Entries per class per Exhibitor

Ribbons – 1<sup>st</sup> thru 3<sup>rd</sup>

Items must depict Fair theme

### Class

1. Wearing apparel
2. Quilts & Afghans

### Class

3. Needlecraft
4. Any other not listed; specify on entry form

# QUILTS

Open to Amador, Calaveras, El Dorado & Tuolumne Counties

**FORMS & FEES DUE BY: Friday, July 8<sup>th</sup>, 4 pm**  
**Entries in Place: Saturday, July 23<sup>rd</sup>, 10 am – 4 pm in POKERVILLE HALL**  
**Entries Judged: Sunday, July 24<sup>th</sup>, 9 am (Open Judging)**  
**Quilts need to be picked up Monday, August 1<sup>st</sup>, 10 am - 4 pm**

### QUILTS

***Due to space constraints, any non-placing “KING SIZE” Quilts may not be hung, but displayed to the best of our ability.  
Thank You for Your Understanding.***

### QUILTING RULES:

- A. The exhibitor must have home produced all entries in this Department within one year of the opening date of the Fair to be eligible for premium awards.
- B. Quilts: All quilts must have a 4-inch sleeve for hanging and display purposes.
- C. Cleaned and Pressed: Soiled articles will be disqualified, and will not be displayed.
- D. **Quilts need to be picked up Monday, August 1, 2022 10 am - 4 pm**
- E. Group Quilts: If any part of the quilt (piecing, quilting, appliqueing, etc.) was completed by anyone other than the exhibitor in whose name the quilt was entered.
- F. Perimeter: The perimeter is the outer edge measurement of the quilt.
- G. Quilt Sizes-
  1. Small- No larger than 216"
  2. Medium: 217"-299"
  3. Large: 300"
- H. Item must have been completed within the last year.

### QUILT JUDGING CRITERIA:

1. Workmanship (including finishing)
2. Design Elements (balance, color, contrast & unity)
3. Technical Elements (technique or multiple techniques)

# CREATIVE & HOME ARTS

---

## **BEST OF SHOW**

Quilts - Division 190-198

*Award sponsored by Mother Lode Real Inventors*

*\$100 premium sponsored by SIERRA GOLD QUILTERS' GUILD*

### **Div. 190 class 1, Div. 193 class 2, Div. 194 class 2**

*Premium sponsored by MOTHERLODE QUILTERS' GUILD*

Premiums Offered per Class

1<sup>st</sup> = \$25      2<sup>nd</sup> = \$15      3<sup>rd</sup> = \$10

### **Div. 190 class 3, Div. 191 class 2, Div. 192 class 1**

*Premium sponsored by SIERRA GOLD QUILTERS' GUILD*

Premiums Offered per Class

1<sup>st</sup> = \$25      2<sup>nd</sup> = \$15      3<sup>rd</sup> = \$10

Entry Fee: \$5.00

Limit: 2 Entries per Class per Exhibitor

Ribbons - 1<sup>st</sup> thru 3<sup>rd</sup>

## **DIVISION 190 – APPLIQUE QUILTS**

Must be mainly (51%) applique and may be based either on traditional or innovative patterns and settings

### Class

1. Small
2. Medium

### Class

3. Large
  4. Group
- 

## **DIVISION 191 – ART QUILTS**

Must be your original design meant to be used as a work of art and is made entirely by the entrant

### Class

1. Small
2. Medium

### Class

3. Large
- 

## **DIVISION 192 – MINIATURE QUILTS**

Large scale quilts made in a miniature size consisting of traditional piecing and/or applique blocks, completed/repeated blocks are usually 3"-4" and overall quilt perimeter is no larger than 96"

### Class

1. Individual

### Class

2. Group
- 

## **DIVISION 193 – MIXED TECHNIQUE QUILTS**

Includes pieced and applique and may include embellishments

### Class

1. Small
2. Medium

### Class

3. Large
  4. Group
- 

## **DIVISION 194 – PIECED QUILTS**

Should be mainly (51%) pieced and may be either on traditional or innovative patterns and settings

### Class

1. Small
2. Medium

### Class

3. Large
  4. Group
- 

## **DIVISION 195 – OTHER QUILTED ITEMS**

Includes but is not limited to wearable art, accessories and home use items such as vests, jackets, purses, hats, table runners, tree skirts, etc

### Class

1. Garments
2. Accessories

### Class

3. Other Quilted Items
-

# CREATIVE & HOME ARTS

---

## DIVISION 196 - HANDPIECED AND/OR HANDQUILTED QUILTS

Class

1. Small
2. Medium

Class

3. Large
  4. Group
- 

## DIVISION 197- NOVICE QUILTER

**Having quilted 1 year or less**

**BEST OF DIVISION**

*\$50 Premium sponsored by The Willow Springs Whist Card Club in Memory of Doris Helms & Sue Freeman*

Class

1. Small
2. Medium

Class

3. Large
  4. Group
- 

## DIVISION 198 - ORIGINAL DESIGN

Class

1. Small
2. Medium

Class

3. Large
  4. Group
- 

# HOBBIES & CRAFTS

Open to Amador, Calaveras, El Dorado & Tuolumne Counties

**FORMS & FEES DUE BY: Friday, July 8<sup>th</sup>, 4 pm**  
**Entries in Place: Saturday, July 23<sup>rd</sup>, 10 am – 4 pm in POKERVILLE HALL**  
**Entries Judged: Sunday, July 24<sup>th</sup>, 10 am (Closed)**  
**Entries Released: Monday, August 1<sup>st</sup>, 10 am – 4 pm**

### **SWEEPSTAKES FOR HOBBIES & CRAFTS**

*Sponsored by Frank A*

**1<sup>st</sup> - \$25      2<sup>nd</sup> - \$15      3<sup>rd</sup> - \$10**

### **BEST OF SHOW**

*Award sponsored by Jeff Holman Auto Center, Inc.*

Entry Fee: \$2.00

Limit: 2 Entries per class per Exhibitor

Ribbons – 1<sup>st</sup> thru 3<sup>rd</sup>

**ITEM MUST HAVE BEEN COMPLETED WITHIN THE LAST YEAR**

## DIVISION 200 - DECORATIVE PAINTING

Class

1. On wearing apparel
2. On wood item
3. On metal item

Class

4. On cloth item, (lampshade, rug, etc.)
  5. Any other not listed above; specify on entry form
- 

## DIVISION 201 - WOODWORK

Class

1. Wood carving
2. Furniture, professional
3. Furniture, amateur
4. Toys
5. Lathe turned pieces
6. Garden items

Class

7. Woodwork, scroll saw work
  8. Woodwork, laser work
  9. Woodwork, decorative
  10. Woodwork, functional
  11. Any other not listed above; specify on entry form
-

# CREATIVE & HOME ARTS

---

## **DIVISION 202 – GLASS**

### **BEST OF DIVISION**

*Award Sponsored by Pokerville Market*

Class

1. Stained
2. Painted

Class

3. Any other not listed above; specify on entry form
- 

## **DIVISION 203 – CERAMICS**

Class

1. Professional Ceramic, any item 12” and over
2. Professional Ceramic, any item under 12”

Class

3. Amateur Ceramic, any item 12” over
  4. Amateur Ceramic, any item under 12”
- 

### **“PRETTY IN PINK AWARD RIBBON”**

*Memorial Craft Award In memory of Kathy Hutchison*

Open to Exhibits entered in Adult Special Competition Crafts, Senior Crafts & Senior Special Education classes already entered are eligible. No entry fee is needed.

TO QUALIFY YOUR ENTRY NEEDS ONLY TO BE PINK OR HAVE PINK IN IT.

A rosette ribbon will be awarded

Sponsored by friends, co-workers and fair staff who have worked with you for many years.

---

## **DIVISION 204 – SPECIAL CREATIONS**

Class

1. China Painting, any item
2. Clocks
3. Miniature Room Setting
4. Hand Molded Pottery, glazed or unglazed
5. Hat

Class

6. Plastic Canvas
  7. Rubber Stamp Art; set of 10, same design
  8. Bridal
  9. Any other not listed above; specify on entry form
- 

## **DIVISION 205 – BEADED ITEMS**

### **BEST OF DIVISION**

*Award Sponsored by Pokerville Market*

Class

1. Beaded Earrings
2. Beaded Necklace or Bracelet, Bead Stringing
3. Beaded Necklace or Bracelet, Bead Weaving

Class

4. Bead Embroidery
  5. Sculptural/Dimensional Beadwork
  6. Any other not listed above; specify on entry form
- 

## **DIVISION 206 – HOLIDAY CREATIONS**

Class

1. Centerpiece, holiday
2. Christmas Ornaments, painted
3. Christmas Angel Ornaments
4. Christmas Ornaments, other
5. Stockings
6. Holiday Decorations, Halloween
7. Holiday Decorations, Christmas

Class

8. Holiday Decorations, Easter
  9. Holiday Decorations, any other not listed
  10. Easter Eggs, any kind
  11. Wreath, Christmas
  12. Wreath, other holiday type
  13. Any other wreath not listed above; specify on entry form
- 

## **DIVISION 207 – MISCELLANEOUS**

Class

1. Candle Making, homemade
2. Soap Making, homemade
3. Metals, any item
4. Leatherwork, any item

Class

5. Multi Media, Video, Power Point – Presentation of Fair Theme or Amador County, 5 minute max.
  6. Scrap Book- Any Subject-**Limited to Two (1) sided pages per exhibitor**
  7. Any other craft not listed above; specify on entry form
-

# CREATIVE & HOME ARTS

---

## **DIVISION 208 – BIRD HOUSES**

### Class

1. Decorative, wood
2. Decorative, other

### Class

3. Functional
  4. Any other (i.e. Bat Houses, Butterfly, etc.)
- 

### **“PRETTY IN PINK AWARD RIBBON”**

*Memorial Craft Award In memory of Kathy Hutchison*

Open to Exhibits entered in Adult Special Competition Crafts, Senior Crafts & Senior Special Education classes already entered are eligible. No entry fee is needed.

TO QUALIFY YOUR ENTRY NEEDS ONLY TO BE PINK OR HAVE PINK IN IT.

A rosette ribbon will be awarded

Sponsored by friends, co-workers and fair staff who have worked with you for many years.

---

## **DIVISION 209 – DOLLS**

### Class

1. Fabric
2. Porcelain or Ceramic dolls with clothes made by exhibitor
3. Porcelain or Ceramic purchased doll with clothes made by exhibitor
4. Porcelain, doll made by exhibitor with purchased clothes

### Class

5. Doll costume, to be displayed with doll (other than porcelain or ceramic)
  6. Doll wardrobe to include 6 separate handmade items, 4 of which must be sewn. If displayed with doll, the doll cannot be entered in a separate class
  7. Doll, any other not listed; specify on entry form
  8. Doll Houses
- 

## **DIVISION 210 – GOURDS-NOVICE & INTERMEDIATE** **BEST OF DIVISION**

*\$60 Premium sponsored by Amador Gourd Artists*

### Class

1. Useful (i.e., bowl, birdhouse etc.) all mediums
2. Painted/Colored, multi medium
3. Weaving

### Class

4. Carved/Filigree/Sculpting
  5. Any Other, GO FOR IT!!
- 

## **DIVISION 211 – GOURDS-ADVANCED & MASTERS** **BEST OF DIVISION**

*\$60 Premium sponsored by Amador Gourd Artists*

### Class

1. Make Me Smile, (any theme or medium, use all or a few skills) Make us Smile or Laugh
2. Cultural, any medium depicting any cultures

### Class

3. Animal or Plant, to depict and/or feature
  4. Carved/Filigree/Sculpting/Weaving
  5. Any Other, GO FOR IT!!
- 

### **“PRETTY IN PINK AWARD RIBBON”**

*Memorial Craft Award In memory of Kathy Hutchison*

Open to Exhibits entered in Adult Special Competition Crafts, Senior Crafts & Senior Special Education classes already entered are eligible. No entry fee is needed.

TO QUALIFY YOUR ENTRY NEEDS ONLY TO BE PINK OR HAVE PINK IN IT.

A rosette ribbon will be awarded

Sponsored by friends, co-workers and fair staff who have worked with you for many years.

---

## **DIVISION 212 – RECYCLE, UPCYCLE & REFURBISH**

### Class

1. Wearables
2. Decorative – Under 24”
3. Decorative – Over 24”

### Class

4. Unconventional - Under 24”
  5. Unconventional – Over 24”
-

# CREATIVE & HOME ARTS

---

## **DIVISION 213 – COLLECTIONS**

Pick your favorite collections. Collections must be in a small case or mounted securely for display

### Class

1. Travel/International, 4'x4' max

### Class

2. Any other not listed; specify on entry form, 4'x4' max
- 

### **“PRETTY IN PINK AWARD RIBBON”**

*Memorial Craft Award In memory of Kathy Hutchison*

Open to Exhibits entered in Adult Special Competition Crafts, Senior Crafts & Senior Special Education classes already entered are eligible. No entry fee is needed.

TO QUALIFY YOUR ENTRY NEEDS ONLY TO BE PINK OR HAVE PINK IN IT.

A rosette ribbon will be awarded

Sponsored by friends, co-workers and fair staff who have worked with you for many years.

---

## **DIVISION 214 – JEWELRY**

### **BEST OF DIVISION**

*Premium sponsored by Mother Lode Real Investors*

### Class

1. Earrings
2. Necklace

### Class

3. Bracelet
  4. Any other not listed
- 

## **DIVISION 215 – GEMS & MINERALS**

### **BEST OF DIVISION**

*Award sponsored by Fred & Cammie Waters In Memory of Larry Williams*

### Class

1. Lapidary  
*Premium sponsored by Mother Lode Real Investors*
2. Miscellaneous Lapidary Techniques  
*Premium sponsored by Mother Lode Real Investors*
3. Specimine Collection  
*Premium sponsored by Mother Lode Real Investors*
4. Faceted Stones  
*Premium sponsored by Mother Lode Real Investors*

### Class

5. Handcrafted Metal  
*Premium sponsored by Mother Lode Real Investors*
  6. Cast Metal  
*Premium sponsored by Mother Lode Real Investors*
  7. Miscellaneous Techniques  
*Premium sponsored by Mother Lode Real Investors*
- 

## **DIVISION 216 SENIOR CITIZEN (65 & OVER)**

### Class

1. Any wood item
2. Any painted item
3. Any holiday item
4. Any other item not listed, specify on entry form

### Class

5. Any jewelry item
  6. Any doll
  7. Recycle, Upcycle & Refurbish
- 

### **“PRETTY IN PINK AWARD RIBBON”**

*Memorial Craft Award In memory of Kathy Hutchison*

Open to Exhibits entered in Adult Special Competition Crafts, Senior Crafts & Senior Special Education classes already entered are eligible. No entry fee is needed.

TO QUALIFY YOUR ENTRY NEEDS ONLY TO BE PINK OR HAVE PINK IN IT.

A rosette ribbon will be awarded

Sponsored by friends, co-workers and fair staff who have worked with you for many years.

---

# FINE ARTS

AMADOR COUNTY ARTISTS' ASSOCIATION  
DEPARTMENT SUPERVISORS  
JUDY DAY  
DAVID & LESLIE SCHUPP

## SELL YOUR ARTWORK!

It is up to the artist to specify on the entry form the desired price. If you are entering on-line, please enter the asking price, along with the description, in the "description" field. Artists are responsible for the Fair's commission of 15% and tax. So, consider that in your pricing. Please title your work. Artwork is expected to remain on display throughout the Fair. Sold Artwork will be released on Monday, August 1<sup>st</sup>.

### *Plein Air Painting & Fairtime Photo*

*For Rules, Please See Page 79  
Division #139 & 140*

Open to Amador, El Dorado, Calaveras, Tuolumne Counties and current Amador County Art Association members.

**Paintings/sculptures must be the original expression of the artist using his/her own personal reference material - not copied from other artwork or commercial photo**

Any work proven to be a copy of another artist's work or of a published photograph will be disqualified Commercial reproductions or work previously exhibited in an Amador County Fair will not be accepted. **Artwork submitted must be of a recent production.** Every precaution will be taken to protect exhibits. The Fair will not be responsible for accidents or loss that may occur to any of the exhibits at the show. The artist must carry any insurance desired on an exhibit at his own expense. The Fair will assume no responsibility for the return of the pictures. Please note on entry form any item that is extremely large. For uniformity in judging, articles may be transferred to proper divisions at the discretion of the judge. Awards will be given on merit in each class.

Go online to <https://www.amadorcountyfair.com/2021-exhibitor-guide>  
or Mail entry forms and fees to PO Box 9, Plymouth, CA 95669

If the Artist would like to have their Art Work "For Sale", please show price on entry form in the designated column. If you are entering on-line, please enter the asking price in the "description" field. Entries in all divisions, except sculpture, will be of a two-dimensional format, framed, and wired with standard picture wire for hanging. Unframed oils/acrylics/etc. accepted only if the canvas is wrapped around the stretcher bars, no staples or tacks are to show, and edges must be painted. NO saw-tooth hangers. Works on paper must be under glass. Sculpture is limited in size to 6 ft in any one direction and 50 lbs. in weight. All other artwork is limited to 50" HANGING SPACE in any one direction, including frame, for each entry.

### **BEST OF SHOW AWARDS**

#### AMATEUR ART

*\$40 Premium sponsored by J. & K. Hipp*

#### ADVANCED AMATEUR ART

*Award sponsored by Sabina Turner*

#### PROFESSIONAL ART

*\$100 Premium sponsored by Gallery 10*

#### SCULPTURE & POTTERY- 3 DIMENSIONAL

*Award sponsored by Mother Lode Real Investors*

### **POPULAR VOTE AWARDS**

#### ART

*Award sponsored by Amador County Artists' Association*

#### SCULPTURE

*Award sponsored by Sutter Creek Gallery*

# FINE ARTS

## ARTS

**FORMS & FEES DUE BY: Friday, July 8<sup>th</sup>, 4 pm**  
**Entries Received: Saturday, July 23<sup>rd</sup>, 10 am – 4 pm in POKERVILLE HALL**  
**Art Entries Open Judging: Sunday, July 24<sup>th</sup>, 9:00 am**  
**Entries Released: Monday, August 1<sup>st</sup>, 10 am – 4 pm**

### DIVISION 250 - AMATEUR ART

Those persons who engage in Artwork as a hobby. Anyone having won three (3) First Places in this category is no longer eligible to enter as an amateur and must enter as an Advanced Amateur. Amateurs may show above present level but may not return to former status. Exhibitor may show in one entry level only per year.

#### PLEASE NO SUBSTITUTIONS

LIMIT: 2 Entries per class per Exhibitor  
Entry Fees: \$3.50 per entry  
Ribbons – 1<sup>st</sup> thru 3<sup>rd</sup>

#### **BEST OF DIVISION**

*\$30 Premium sponsored by J & K Hipp*  
*Gift Certificate from Jackson Paint Spot*

*Class premiums sponsored by Amador County Arts Council, Amador County Fair & Kelly Moore Paint of Jackson*  
*1<sup>st</sup> Place Winners \$5*

**Paintings/sculptures must be the original expression of the artist using his/her own personal reference material - not copied from any other artwork or commercial photo.**

**ARTWORK WILL NOT BE JUDGED OR DISPLAYED IF NOT WIRED PROPERLY FOR DISPLAY!!**  
**ALL ARTWORK MUST INCLUDE TITLE ON ENTRY FORM**

#### Class

1. Oil or Acrylic - Landscape, Seascape & Western
2. Oil or Acrylic - Still Life, Floral
3. Watercolor - Landscape, Seascape & Western
4. Watercolor - Still Life, Floral
5. Pastel & Encaustic- any subject (except Portrait)
6. Portraits, likeness of a person – Any media, two dimensional
7. Graphics, Pen, Pencil, Charcoal, Ink & Prints (i.e., Mono Prints, Block prints, prints or etchings) - all original, no commercial copies, any subject
8. Collage & Mixed Media - Substantial visible use of

#### Class

- two or more different materials, any subject, any media, two dimensional. Must list on back of art.
9. Ag Art – must feature crop, agricultural product, agriculturist, or agricultural landscape any media
10. Animal, Animal Portrait, and Wildlife - any media, 2 dimensional
11. Abstract and Non-objective - any media, 2 dimensional
12. Other – Any subject not listed above in any media, two dimensional. Must specify on entry form.

### ***Plein Air Painting & Fairtime Photo***

***For Rules, Please See Page 79***

***Division #139 & 140***

### **SELL YOUR ARTWORK!**

**It is up to the artist to specify on the entry form the desired price. If you are entering online, please enter the asking price, along with the description, in the “description” field. Artists are responsible for the Fair’s commission of 15% and tax. So, consider that in your pricing. Please title your work. Artwork is expected to remain on display throughout the Fair. Sold Artwork will be released on Monday, August 1<sup>st</sup>.**



# FINE ARTS

## VISION 251 - ADVANCED AMATEUR ART

**FORMS & FEES DUE BY: Friday, July 8<sup>th</sup>, 4 pm**  
**Entries Received: Saturday, July 23<sup>rd</sup>, 10 am – 4 pm in POKERVILLE HALL**  
**Art Entries Open Judging: Sunday, July 24<sup>th</sup>, 9:00 am**  
**Entries Released: Monday, August 1<sup>st</sup>, 10 am – 4 pm**

Those who engage in artwork as a hobby, whose return from sales (if any) does not exceed the cost of materials for the articles sold and is not otherwise compensated because of engaging in this work, except for cash prizes and awards.

Limit: 2 Entries per class per Exhibitor  
Entry Fee: \$6.50 per entry  
Ribbons – 1<sup>st</sup> thru 3<sup>rd</sup>

### BEST OF DIVISION

*\$30 Premium sponsored by J & K Hipp*  
*Gift Certificate from Jackson Paint Spot*

*Class premiums sponsored by Amador County Arts Council, Amador County Fair & Kelly Moore Paint of Jackson*

<b>1<sup>st</sup></b>	<b>2<sup>nd</sup></b>	<b>3<sup>rd</sup></b>
<b>\$10</b>	<b>\$5</b>	<b>\$3</b>

**Paintings/sculptures must be the original expression of the artist using his/her own personal reference material - not copied from any other artwork or commercial photo.**

**ARTWORK WILL NOT BE JUDGED OR DISPLAYED IF NOT WIRED PROPERLY FOR DISPLAY!!**  
**ALL ARTWORK MUST INCLUDE TITLE ON ENTRY FORM**

#### Class

1. Oil or Acrylic - Landscape, Seascape & Western
2. Oil or Acrylic - Still Life, Floral
3. Watercolor - Landscape, Seascape & Western
4. Watercolor - Still Life, Floral
5. Pastel & Encaustic- any subject (except Portrait)
6. Portraits, likeness of a person – Any media, two dimensional
7. Graphics, Pen, Pencil, Charcoal, Ink & Prints (i.e. Mono Prints, Block prints, prints or etchings) - all original, no commercial copies, any subject
8. Collage & Mixed Media - Substantial visible use of

#### Class

- two or more different materials, any subject, any media, two dimensional. Must list on back of art.
9. Ag Art – must feature crop, agricultural product, agriculturist, or agricultural landscape any media
10. Animal, Animal Portrait, and Wildlife - any media, 2 dimensional
11. Abstract and Non-objective - any media, 2 dimensional
12. Other – Any subject not listed above in any media, two dimensional. Must specify on entry form.

### ***Plein Air Painting & Fairtime Photo***

***For Rules, Please See Page 79***

***Division #139 & 140***

## **SELL YOUR ARTWORK!**

**It is up to the artist to specify on the entry form the desired price. If you are entering on-line, please enter the asking price, along with the description, in the “description” field. Artists are responsible for the Fair’s commission of 15% and tax. So, consider that in your pricing. Please title your work. Artwork is expected to remain on display throughout the Fair. **Sold Artwork will be released on Monday, August 1<sup>st</sup>.****

# FINE ARTS

## DIVISION 252 - PROFESSIONAL ART

**FORMS & FEES DUE BY: Friday, July 8<sup>th</sup>, 4 pm**  
**Entries Received: Saturday, July 23<sup>rd</sup>, 10 am – 4 pm in POKERVILLE HALL**  
**Art Entries Open Judging: Sunday, July 24<sup>th</sup>, 9:00 am**  
**Entries Released: Monday, August 1<sup>st</sup>, 10 am – 4 pm**

Artists who are represented by a gallery. Artists who TEACH OR SELL regularly or have “ONE MAN SHOWS”. Exhibitors in this division are not permitted to enter classes in Amateur or Advanced Amateur divisions.

Limit: 2 Entries per Class per Exhibitor  
Entry Fee: \$6.50 per entry  
Ribbons – 1<sup>st</sup> thru 3<sup>rd</sup>

### **BEST OF DIVISION**

*\$50 Premium Sponsored by Elizabeth & Timothy Lukes*

*Class premiums sponsored by Amador County Arts Council, Amador County Fair & Kelly Moore Paint of Jackson*

<b>1<sup>st</sup></b>	<b>2<sup>nd</sup></b>	<b>3<sup>rd</sup></b>
<b>\$15</b>	<b>\$10</b>	<b>\$5</b>

**Paintings/sculptures must be the original expression of the artist using his/her own personal reference material - not copied from any other artwork or commercial photo.**

**ARTWORK WILL NOT BE JUDGED OR DISPLAYED IF NOT WIRED PROPERLY FOR DISPLAY!!**  
**ALL ARTWORK MUST INCLUDE TITLE ON ENTRY FORM**

#### Class

1. Oil or Acrylic - Landscape
2. Oil or Acrylic - Seascape & Western
3. Oil or Acrylic - Still Life, Floral
4. Watercolor - Landscape
5. Watercolor - Seascape & Western
6. Watercolor - Still Life, Floral
7. Oil or Acrylic - Abstract, non-objective, 2 dimensional.
8. Watercolor or Pastel - Abstract, non-objective, 2 dimensional.
9. Abstract – Non-objective, **any media not mentioned above**, 2 dimensional
10. Pastel – Any subject except portrait
11. Portraits - likeness of a person – any media, 2 dimensional

#### Class

12. Collage & Mixed Media - Substantial visible use of two or more different materials, any subject, any media, 2 dimensional. Must list on back of art.
13. Encaustic
14. Graphics, Pen, Pencil, Charcoal, Ink & Prints (i.e. Mono Prints, Block prints, prints or etchings) - all original, any subject, no commercial copies
15. Ag Art – must feature crop, agricultural product, agriculturist, or agricultural landscape, any media
16. Wildlife, Animals, and Animal Portraits– any media, 2 dimensional
17. Other – Any subject not listed above, in any media, 2 dimensional, must specify on entry form

**ALL ARTWORK MUST INCLUDE TITLE ON ENTRY FORM**

### ***Plein Air Painting & Fairtime Photo***

***For Rules, Please See Page 79***

***Division #139 & 140***

## **SELL YOUR ARTWORK!**

**It is up to the artist to specify on the entry form the desired price. If you are entering on-line, please enter the asking price, along with the description, in the “description” field. Artists are responsible for the Fair’s commission of 15% and tax. So, consider that in your pricing. Please title your work. Artwork is expected to remain on display throughout the Fair. Sold Artwork will be released on Monday, August 1<sup>st</sup>.**

# FINE ARTS

**FORMS & FEES DUE BY: Friday, July 8<sup>th</sup>, 4 pm**  
**Entries Received: Saturday, July 23<sup>rd</sup>, 10 am – 4 pm in POKERVILLE HALL**  
**Art Entries Open Judging: Sunday, July 24<sup>th</sup>, 9:00 am**  
**Entries Released: Monday, August 1<sup>st</sup>, 10 am – 4 pm**

## **DIVISION 253 – 3-DIMENSIONAL SCULPTURE & POTTERY**

Limit: 2 Entries per Class per Exhibitor  
Entry Fee: \$6.50 per entry  
Ribbons – 1<sup>st</sup> thru 3<sup>rd</sup>

Class

1. Amateur Sculpture – any media (no glass or soft sculpture)
2. Professional Sculpture – any media (no glass or soft sculpture)
3. Amateur - Hand Blown Glass

Class

4. Professional - Hand Blown Glass
5. Amateur - Wheel Thrown Pottery
6. Professional - Wheel Thrown Pottery
7. Amateur - Hand Built Pottery
8. Professional - Hand Built Pottery

## **DIVISION 254 – FAIR THEME ART** **“AROUND THE WORLD IN 4 DAYS!”**

Limit: 2 Entries per Class per Exhibitor  
Entry Fee: \$6.50 per entry  
Ribbons – 1<sup>st</sup> thru 3<sup>rd</sup>

### **BEST OF DIVISION**

*Award sponsored by Jim & Margo Carr*

Class

1. Amateurs - any media
2. Advanced Amateurs – any media

Class

3. Professional - any media

## **DIVISION 255 - SCENES OF AMADOR COUNTY**

### **BEST OF DIVISION**

*In Memory of Victoria Robinson*  
*Premium sponsored by Sutter Creek Gallery*

Limit: 2 Entries per Class per Exhibitor  
Entry Fee: \$6.50 per entry  
Ribbons – 1<sup>st</sup> thru 3<sup>rd</sup>

Open to professional, advanced amateur or amateur artists.

Amador County Scenery must have the location identified on the entry blank & on the back of the picture.  
Scenes not in Amador County will not be judged for awards.

Class

1. Amateur – Any Media
2. Advanced Amateur - Any Media

Class

3. Professional - Oil, Acrylic or Mixed Media
4. Professional – Pastel, Watercolor, Encaustic, Other

## **SELL YOUR ARTWORK!**

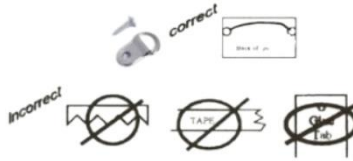
**It is up to the artist to specify on the entry form the desired price. If you are entering on-line, please enter the asking price, along with the description, in the “description” field. Artists are responsible for the Fair’s commission of 15% and tax. So, consider that in your pricing. Please title your work. Artwork is expected to remain on display throughout the Fair. Sold Artwork will be released on Monday, August 1<sup>st</sup>.**

# PHOTOGRAPHY

Open to Amador, El Dorado, Calaveras, Tuolumne Counties, and current Amador County Art Association members.

ALL PHOTOS MUST HAVE A TITLE  
ON THE ENTRY FORM

**\*\*LIMITED TO 5 TOTAL ENTRIES PER EXHIBITOR\*\***



**PHOTOS WILL NOT BE JUDGED OR DISPLAYED IF NOT WIRED PROPERLY FOR DISPLAY!!**

## RULES FOR PHOTOS:

- A. Entries must be entered into the appropriate class to receive judging.  
TRADITIONAL PRINT – Any photo taken with film or digital reader card, where the image has not undergone manipulation other than cropping, burning, and dodging, normal color or density balancing and spotting. Machine copy of original image is acceptable. 2 or more prints combined or stitched together are not allowed.  
MANIPULATED PRINT – Any changes to the image beyond the traditional changes and the image is affixed to paper. This includes hand coloring, cross processing, photo collage, photo grams, cyanotype, Polaroid transfers, etc.
- B. Photos on alternative surfaces (wood, canvas, metal) must be self-contained, dry and submitted in heavy-duty clear bags. Framing with glass is optional.  
The Fair management will not be responsible for damages or fingerprints.
- C. FRAMING WITH CLEAR GLASS (**NO PLEXI-GLASS OR PLASTIC**) OF ALL PICTURES, EXCEPT PHOTOS ON ALTERNATIVE SURFACES, (WHICH MUST BE SUBMITTED IN HEAVY DUTY CLEAR BAGS) IS NOW REQUIRED TO FACILITATE CAREFUL HANDLING OF ENTRIES & PROPER HANGING FOR THE SHOW! PHOTOS ARE EASILY SCRATCHED!
- D. Photos in all Divisions must have a minimum image size of 35 square inches (i.e., 5 X 7). Photos in all Divisions (except Div. 262), image, mat and frame may not exceed 20 x 24 inches.
- E. Division 262 (Professional) image, mat and frame may not exceed 32 x 32 inches.
- F. **ALL PHOTOS ENTERED IN THE SHOW MUST HAVE STANDARD D-RINGS AND WIRE FOR HANGING.** Metal, glued, or adhesive hangers will NOT be accepted.
- G. All photos must have been taken by the artist exhibitor but need not have been developed or printed by the exhibitor except in Division 263 (Developing & Processing).
- H. All work must be originally created by the Artist/Exhibitor and to have been taken within two years of current fair.
- I. PRINT ARTIST'S NAME ON BACK OF PICTURE. NO ARTIST NAME TO BE EXPOSED ON FRONT OF PICTURE. (If name is on the front, please cover with tape.
- J. The Fair has the authority to deem a photo inappropriate to be shown at Fair.

## **BEST OF SHOW AWARDS**

### AMATEUR

*Award sponsored by Camille Waters Photography*

### ADV. AMATEUR

*\$40 Premium sponsored by The Garbarini Family, LLC –Tom, Don, Jan & Suzy*

### PROFESSIONAL

*Award sponsored by Carolyn Fox & Larry Angier*

## **POPULAR VOTE AWARD**

### PHOTOGRAPHY

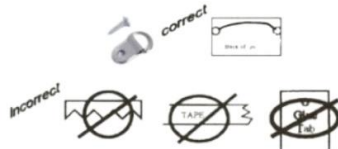
*Award sponsored In Memory of Dorothy Magoffin*

# PHOTOGRAPHY

## DIVISION 260 - AMATEUR PHOTOGRAPHY

**FORMS & FEES DUE BY: Friday, July 8<sup>th</sup>, 4 pm**  
**Entries Received: Saturday, July 23<sup>rd</sup>, 10 am – 4 pm in POKERVILLE HALL**  
**Photo Entries Open Judged: Sunday, July 24<sup>th</sup>, 9 am**  
**Entries Released: Monday, August 1<sup>st</sup>, 10 am – 4 pm**

Those persons who engage in photography as a hobby. Anyone having won three (3) First Places in this category is no longer eligible to enter as an amateur and must enter as an Advanced Amateur. Amateur may show above present level but may not return to former status. May show in one entry level per year.



Black & White or Color Entry  
Limit: Five (5) total entries per exhibitor  
Entry Fee: \$3.50 per entry  
Ribbons – 1<sup>st</sup> thru 3<sup>rd</sup> & Honorable Mention

### BEST OF DIVISION

*Award sponsored by Frank A*

*Class Premiums Sponsored by Amador County Fair, Amador County Arts Council & Kelly Moore Paint of Jackson*  
*1<sup>st</sup> Place Winners - \$5*

### PHOTOS WILL NOT BE JUDGED OR DISPLAYED IF NOT WIRED PROPERLY FOR DISPLAY!!

All photos entered in the show must have standard d-rings and wire for hanging.

Metal, glued, or adhesive hangers will NOT be accepted.

ALL PHOTOS MUST INCLUDE TITLE ON ENTRY FORM

#### TRADITIONAL PRINTS – See Rules

##### Class

1. Scenic Views – Landscapes
2. Scenic Views – Waterscapes
3. Scenic Views – Cityscapes, Architecture/Building
4. Scenic Views – Other
5. Sunrise/Sunset
6. Wildflowers
7. Garden Flowers
8. Wildlife – Portraits & in the landscape
9. Wildlife – Action & behavior
10. Pets
11. Antique Tractors

##### Class

12. Churches in Amador County
13. Children – Action
14. Children-Portrait, single, multiple
15. Children – Other
16. Portraits/People, other than children
17. Any subject – black & white
18. Any subject – color, nature
19. Any subject – color, other
20. Macro/Super close-up – Any subject, any color
21. Cellphone/iPad Phot

#### MANIPULATED PRINTS – See Rules

##### Class

22. Scenic Views – Landscape/ Waterscape

##### Class

23. Other

### ***Plein Air Painting & Fairtime Photo***

***For Rules, Please See Page 79***

***Division #139 & 140***

## **SELL YOUR PHOTOS!**

**It is up to the artist to specify on the entry form the desired price. If you are entering on-line, please enter the asking price, along with the description, in the “description” field. Artists are responsible for the Fair’s commission of 15% and tax. So, consider that in your pricing. Please title your work. Photos are expected to remain on display throughout the Fair. Sold Artwork will be released on Monday, August 1<sup>st</sup>.**

# PHOTOGRAPHY

## DIVISION 261 - ADVANCED AMATEUR ONLY

**FORMS & FEES DUE BY: Friday, July 8<sup>th</sup>, 4 pm**  
**Entries Received: Saturday, July 23<sup>rd</sup>, 10 am – 4 pm in POKERVILLE HALL**  
**Photo Entries Open Judged: Sunday, July 24<sup>th</sup>, 9 am**  
**Entries Released: Monday, August 1<sup>st</sup>, 10 am – 4 pm**

Those who engage in Photography as a hobby, whose return from sales (if any) does not exceed the cost of materials for the articles sold and are not otherwise remunerated because of engaging in this work, except for cash prizes and awards.



Black & White or Color Entry  
Limit: Five (5) total entries per exhibitor  
Entry Fee: \$6.50 per entry  
Ribbons – 1<sup>st</sup> thru 3<sup>rd</sup> & Honorable Mention

### **BEST OF DIVISION**

*Award sponsored by David & Leslie Schupp*

*Class Premiums Sponsored by Amador County Fair, Amador County Arts Council & Kelly Moore Paint of Jackson*

<b>1<sup>st</sup></b>	<b>2<sup>nd</sup></b>	<b>3<sup>rd</sup></b>
<b>\$10</b>	<b>\$5</b>	<b>\$3</b>

### PHOTOS WILL NOT BE JUDGED OR DISPLAYED IF NOT WIRED PROPERLY FOR DISPLAY!!

All photos entered in the show must have standard d-rings and wire for hanging.

Metal, glued, or adhesive hangers will NOT be accepted.

ALL PHOTOS MUST INCLUDE TITLE ON ENTRY FORM

#### TRADITIONAL PRINTS – See Rules

##### Class

1. Scenic Views – Landscape
2. Scenic Views – Waterscape
3. Scenic Views - Cityscape, Architecture & Building
4. Sunrise/Sunset
5. Flowers
6. Animals
7. Churches in Amador County

##### Class

8. Action
9. Portraits – “People”
10. People
11. Any subject not listed
12. Macro/Super close-up – Any subject, any color
13. Cell phone/iPad photos

#### MANIPULATED PRINTS – See Rules

##### Class

14. Scenic Views – Land or Water

##### Class

15. Other

### ***Plein Air Painting & Fairtime Photo***

***For Rules, Please See Page 79***

***Division #139 & 140***

## **SELL YOUR PHOTOS!**

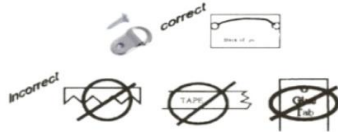
**It is up to the artist to specify on the entry form the desired price. If you are entering on-line, please enter the asking price, along with the description, in the “description” field. Artists are responsible for the Fair’s commission of 15% and tax. So, consider that in your pricing. Please title your work. Photos are expected to remain on display throughout the Fair. Sold Artwork will be released on Monday, August 1<sup>st</sup>.**

# PHOTOGRAPHY

## DIVISION 262 - PROFESSIONAL ONLY

**FORMS & FEES DUE BY: Friday, July 8<sup>th</sup>, 4 pm**  
**Entries Received: Saturday, July 23<sup>rd</sup>, 10 am – 4 pm in POKERVILLE HALL**  
**Photo Entries Open Judged: Sunday, July 24<sup>th</sup>, 9 am**  
**Entries Released: Monday, August 1<sup>st</sup>, 10 am – 4 pm**

Photographers who are represented by a gallery, who TEACH OR SELL regularly as part of their livelihood or have "ONE MAN SHOWS." Exhibitors in this division are not permitted to enter Amateur or Advanced Amateur divisions.



Black & White or Color Entry  
Limit: Five (5) total entries per exhibitor  
Entry Fee: \$6.50 per entry  
Ribbons – 1<sup>st</sup> thru 3<sup>rd</sup> & Honorable Mention

*Class Premiums Sponsored by Amador County Fair, Amador County Arts Council & Kelly Moore Paint of Jackson*

**1<sup>st</sup>      2<sup>nd</sup>      3<sup>rd</sup>**  
**\$15    \$10    \$5**

### PHOTOS WILL NOT BE JUDGED OR DISPLAYED IF NOT WIRED PROPERLY FOR DISPLAY!!

All photos entered in the show must have standard d-rings and wire for hanging.

Metal, glued, or adhesive hangers will NOT be accepted.

ALL PHOTOS MUST INCLUDE TITLE ON ENTRY FORM

#### TRADITIONAL PRINTS – See Rules

##### Class

1. Scenic Views – Landscape
2. Scenic Views – Waterscape
3. Scenic Views - Cityscape, Architecture & Building
4. Vineyards/Wineries in Amador County
5. Sunrise/Sunset
6. Weddings in Amador County
7. Animals

##### Class

8. Churches in Amador County
9. Action
10. Portraits – “People”
11. People “Documentary”
12. Drone photos
13. Macro/Super close-up – Any subject, any color
14. Other

#### MANIPULATED PRINTS – See Rules

##### Class

15. Scenic Views – Land or Water
16. People

##### Class

17. Animals
18. Other

### ***Plein Air Painting & Fairtime Photo***

***For Rules, Please See Page 79***

***Division #139 & 140***

## **SELL YOUR PHOTOS!**

**It is up to the artist to specify on the entry form the desired price. If you are entering on-line, please enter the asking price, along with the description, in the “description” field. Artists are responsible for the Fair’s commission of 15% and tax. So, consider that in your pricing. Please title your work. Photos are expected to remain on display throughout the Fair. Sold Artwork will be released on Monday, August 1<sup>st</sup>.**

# PHOTOGRAPHY

## DIVISION 263 - PROCESSING & DEVELOPING

**FORMS & FEES DUE BY: Friday, July 8<sup>th</sup>, 4 pm**  
**Entries Received: Saturday, July 23<sup>rd</sup>, 10 am – 4 pm in POKERVILLE HALL**  
**Photo Entries Open Judged: Sunday, July 24<sup>th</sup>, 9 am**  
**Entries Released: Monday, August 1<sup>st</sup>, 10 am – 4 pm**

AMATEUR, ADVANCED AMATEUR & PROFESSIONAL  
Photos taken, developed, and printed by the exhibitor-Kodachrome developing excluded.

Black & White or Color Entry  
Limit: Five (5) total entries per exhibitor  
Entry Fee: \$6.50 per entry  
Ribbons – 1<sup>st</sup> thru 3<sup>rd</sup> & Honorable Mention

### PHOTOS WILL NOT BE JUDGED OR DISPLAYED IF NOT WIRED PROPERLY FOR DISPLAY!!

All photos entered in the show must have standard d-rings and wire for hanging.  
Metal, glued, or adhesive hangers will NOT be accepted.  
ALL PHOTOS MUST INCLUDE TITLE ON ENTRY FORM

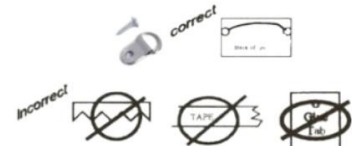
#### Traditional & Manipulated Prints

##### Class

1. Black/White

##### Class

2. Color



## DIVISION 264 - FAIR THEME “AROUND THE WORLD IN 4 DAYS!”

Black & White or Color Entry  
Limit: Five (5) total entries per exhibitor  
Entry Fee: \$6.50 per entry  
Ribbons – 1<sup>st</sup> thru 3<sup>rd</sup> & Honorable Mention

### PHOTOS WILL NOT BE JUDGED OR DISPLAYED IF NOT WIRED PROPERLY FOR DISPLAY!!

All photos entered in the show must have standard d-rings and wire for hanging.  
Metal, glued, or adhesive hangers will NOT be accepted.  
ALL PHOTOS MUST INCLUDE TITLE ON ENTRY FORM

#### **BEST OF DIVISION**

*Award sponsored by Carolyn Fox & Larry Angier*

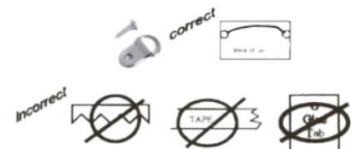
#### TRADITIONAL PRINTS – See Rules

##### Class

1. Amateur only - traditional or manipulated
2. Advanced Amateurs - traditional or manipulated

##### Class

3. Professional - traditional or manipulated



## **SELL YOUR PHOTOS!**

**It is up to the artist to specify on the entry form the desired price. If you are entering online, please enter the asking price, along with the description, in the “description” field. Artists are responsible for the Fair’s commission of 15% and tax. So, consider that in your pricing. Please title your work. Photos are expected to remain on display throughout the Fair. Sold Artwork will be released on Monday, August 1<sup>st</sup>.**



# PHOTOGRAPHY

## DIVISION 265 - SCENES OF AMADOR COUNTY

**FORMS & FEES DUE BY: Friday, July 8<sup>th</sup>, 4 pm**  
**Entries Received: Saturday, July 23<sup>rd</sup>, 10 am – 4 pm in POKERVILLE HALL**  
**Photo Entries Open Judged: Sunday, July 24<sup>th</sup>, 9 am**  
**Entries Released: Monday, August 1<sup>st</sup>, 10 am – 4 pm**

Open to Professionals, Advanced Amateurs and Amateur photographers.

**Amador County Scenery must have the location identified on the back of the picture & on the entry form.**  
Scenes not in Amador County will not be judged for awards. Image and mat not to exceed 16" x 20" inches, plus frame.

Black & White or Color  
Limit: Five (5) total entries per exhibitor  
Entry Fee: \$6.50 per entry  
Ribbons – 1<sup>st</sup> thru 3<sup>rd</sup> & Honorable Mention



### BEST OF DIVISION

*Award sponsored by Carolyn Fox & Larry Angier*

### PHOTOS WILL NOT BE JUDGED OR DISPLAYED IF NOT WIRED PROPERLY FOR DISPLAY!!

All photos entered in the show must have standard d-rings and wire for hanging.

Metal, glued, or adhesive hangers will NOT be accepted.

ALL PHOTOS MUST INCLUDE TITLE ON ENTRY FORM

TRADITIONAL PRINTS – See Rules

Class

1. Amateur only
2. Advanced Amateurs
3. Professional

MANIPULATED PRINTS – See Rules

Class

4. Amateur only
5. Advanced Amateurs
6. Professional

## DIVISION 266 – CREATIVE PHOTOGRAPHY “ANY SUBJECT”

Black & White or Color  
Limit: Five (5) total entries per exhibitor  
Entry Fee: \$6.50 per entry  
Ribbons – 1<sup>st</sup> thru 3<sup>rd</sup> & Honorable Mention

### PHOTOS WILL NOT BE JUDGED OR DISPLAYED IF NOT WIRED PROPERLY FOR DISPLAY!!

All photos entered in the show must have standard d-rings and wire for hanging.

Metal, glued, or adhesive hangers will NOT be accepted.

ALL PHOTOS MUST INCLUDE TITLE ON ENTRY FORM

### AMATEUR

Class

1. Photo shopped – combine 2 or more “individual” prints stitched together or cut and pasted in any way
2. HDR – High-Definition Resolution
3. Multiple - individually matted prints within one frame
4. Collages – Multiple, different photos assembled creating one single print

### ADVANCED AMATEUR

Class

5. Photoshopped – combine 2 or more “individual” prints stitched together or cut and pasted in any way
6. HDR – High-Definition Resolution
7. Multiple - Individually matted prints within one frame
8. Collages – Multiple, different photos assembled creating one single print

### PROFESSIONAL

Class

9. Photoshopped – combine 2 or more “individual” prints stitched together or cut and pasted in any way
10. HDR – High-Definition Resolution
11. Multiple - Individually matted prints within one frame
- ages – Multiple, different photos assembled creating one single print

101

# AG - HORT

## DEPARTMENT SUPERVISOR

DIANNE BENNETT

OPEN TO AMADOR, EL DORADO & CALAVERAS COUNTIES

**FORMS & FEES DUE BY: Sat, July 23<sup>rd</sup>, 4 pm**  
**Entries in Place: Thursday, July 28<sup>th</sup>, 7 am - 9 am in POKERVILLE HALL**  
**Entries Judged: Thursday, July 28<sup>th</sup>, 9:30 am**  
**Entries Released: Monday, August 1<sup>st</sup>, 10 am - 4 pm**

BEST OF SHOW for AG-HORT

*Award sponsored by Mother Lode Real Investors*

Newly or recently purchased vegetables for exhibit purposes will not be allowed and may be disqualified. The quality desired in agricultural and horticultural products exhibited is the quality that brings the best financial return in the commercial market, and such exhibits must be at least equal in maturity as that state of ripeness required by section 42513 of the California Agricultural Code in order to be considered for premium awards. Section 42513: "Mature means having reached that stage of ripeness which will ensure the completion of the ripening process to a degree which will insure palatability, after the removal of the product from the tree, plant or vine." Section 42515: "Overripe" means having an advanced state of maturity which causes the product to be undesirable for human consumption in a fresh state". NOTE: Unless otherwise stated, the type of vegetable desired for exhibit will be the uniform commercial grade rather than overgrown. Monstrosities will not be considered for premium awards, except under Division 291.



## VEGETABLES

VARIETY OF PRODUCTS MUST BE CORRECTLY LABELED UNLESS SPECIFIED VARIETY MUST BE NAMED ON ENTRY BLANK

Limit 2 per Class per Exhibitor  
Entry Fee: \$2.00 per entry per class  
Ribbons - 1<sup>st</sup> thru 3<sup>rd</sup>

### DIVISION 285 - FRUIT AND POD VEGETABLES

Plate Display

<u>Class</u>	<u>QUANTITY</u>	<u>Class</u>	<u>QUANTITY</u>
1. Beans, Bush	6-12 pods	5. Peppers, other sweet varieties-	2-4
2. Beans, Pole variety	6-12 pods	6. Peppers, Chili	3-5
3. Eggplant	1-2	7. Peppers, Wax	3-7
4. Peppers, Bell	2-4	8. Any other not listed	Min of 2

### DIVISION 286 - TOMATOES

<u>Class</u>	<u>QUANTITY</u>	<u>Class</u>	<u>QUANTITY</u>
1. Tomatoes, Big Boy Hybrid	3-5	5. Tomatoes, Slicing	3-5
2. Tomatoes, Earliana	3-5	6. Tomatoes, All Yellow	3-5
3. Tomatoes, Early Girl	3-5	7. Tomatoes, Cherry	6-12
4. Tomatoes, Ace	3-5	8. All other varieties	3-5

# AG - HORT

## **DIVISION 287 - LEAFY & STEM VEGETABLES**

Plate Display

<u>Class</u>	<u>QUANTITY</u>	<u>Class</u>	<u>QUANTITY</u>
1. Corn, Sweet, Yellow	3-5 ears	3. Rhubarb	5 stems
2. Swiss Chard stems	5	4. Any other leafy or stem vegetable, specify on entry form	5 stems

## **DIVISION 288 - ROOT, BULB & TUBER VEGETABLES**

Plate Display

<u>Class</u>	<u>QUANTITY</u>	<u>Class</u>	<u>QUANTITY</u>
1. Beets, Garden, Topped	3-5	10. Onions, Globe, Yellow	5
2. Carrots, Topped	3-5	11. Onions, Flat, Red	5
3. Garlic, White	6	12. Onions, Flat, Yellow	5
4. Garlic, Elephant	6	13. Potatoes	5
5. Garlic, Braided	L2	14. Radishes, Any Variety	2 Bunches
6. Garlic, Braided	24	15. Any other root, bulb or tuber vegetable, specify on entry form	5
7. Onions, Globe, White	5		
8. Onions, Globe, Red	5		
9. Squash, Table Size, Zucchini	3-5		

## **DIVISION 289 - VINE CROPS**

Plate Display

<u>Class</u>	<u>QUANTITY</u>	<u>Class</u>	<u>QUANTITY</u>
1. Cucumbers, Slicing, Dark Green	3	8. Cucumbers, Gherkins Or Midget Size	7
2. Cucumbers, Slicing, Lemon	3	9. Cucumbers, Any Other	5
3. Cucumbers, Pickling, Small Size	6	10. Melons, Any	1
4. Cucumbers, Pickling, Dill Size	5	11. Squash, Table Size, Zucchini	3-5
5. Squash, Table Size, Dark Green	3-5	12. Squash, Table Size, Yellow	3-5
6. Squash, Table Size, Light Green	3-5	13. Squash, Table Size, Crooked Necked	3-5
7. Squash, Table Size, Scalloped	3-5	14. Any other not listed; specify on entry form	3-5

## **DIVISION 290 - HERBS**

<u>Class</u>	<u>Class</u>
1. Cut Herb, Sage	4. Cut Herb, Rosemary
2. Cut Herb, Oregano	5. Cut Herb, Parsley
3. Cut Herb, Sweet Basil	6. Cut Herb, any other variety

## **DIVISION 291 - MISCELLANEOUS**

<u>Class</u>	<u>Class</u>
1. Largest Zucchini	3. Largest, other than listed; specify on entry form
2. Largest Onion	4. Garden Oddities

## **DIVISION 292 - FRESH FRUIT AND NUTS**

<u>Class</u>	<u>QUANTITY</u>	<u>Class</u>	<u>QUANTITY</u>
1. Peaches	4	5. Any other fruit	4
2. Apples	4	6. Walnuts, all varieties	6
3. Plums	4	7. Any Other Nut; specify on entry form	6
4. Pears	4		

# AG - HORT

## **DIVISION 293 - ORGANIC PRODUCE**

ALL ENTRIES MUST BE ORGANICALLY GROWN IN ACCORDANCE WITH THE CA ORGANIC FOODS ACT OF 1990.

<u>Class</u>	<u>QUANTITY</u>	<u>Class</u>	<u>QUANTITY</u>
1. Tomatoes	3 - 5	8. Beans	6-12
2. Leaf & Stem Vegetables	5	9. Peppers	3-5
3. Herbs	1 bunch	10. Cucumbers	3-5
4. Carrots	3-5	11. Squash	3-5
5. Garlic	5	12. Other Bush Vegetable	3-5
6. Onions	5	13. Any Other Not Listed	3-5
7. Potatoes	5		

## **DIVISION 294 - FARMER'S BEST**

Not eligible for Best of Show

Entry Fee: \$2.00 per entry

Limit 1 entry per class, per exhibitor

<u>Class</u>	<u>QUANTITY</u>	<u>Class</u>	<u>QUANTITY</u>
1. Family Garden Display -Tray Display			
Tomato, any variety	3 - 5	Potatoes, any variety	3 - 5
Squash, any variety	3 - 5	Beets, any variety	3 - 5
Corn, any variety	3 - 5	Beans, Bush or Pole	3 - 5
Peppers, any variety	3 - 5	Onions	3 - 5
Garlic, any variety	3 - 5	Cucumbers	3 - 5

- UNLESS SPECIFIED VARIETY, MUST BE NAMED ON ENTRY FORM
- Exhibitor to choose 5 varieties from the list above.
- Varieties to be named on entry form – each variety to be same type on each tray display.

### Class

#### 2. Care Basket

- Exhibitor is to display 10 varieties of homegrown fruits, nuts, vegetables and herbs.
- A 5" X 7" card naming all varieties clearly printed or typed is to be displayed in an open basket where all products can easily be viewed.

**PLEASE REMEMBER TO THANK YOUR SPONSORS!!!**

# FLORICULTURE

## DEPARTMENT SUPERVISOR

Sybil Griffith

OPEN TO AMADOR, CALAVERAS, EL DORADO  
& TUOLUMNE COUNTIES

## 2022 FEATURE FLOWER ZINNIA – ANY VARIETY

### TERMS:

1. ANNUAL: A plant that completes its outdoor cycle or growth in one year.
2. BIENNIAL: A plant that normally completes its outdoor cycle of growth in two years.
3. PERENNIAL: A plant that lives, blooms, and seeds for more than two years.
4. HERBACEOUS PERENNIAL: A plant that lives longer than two years but which, in colder climates, dies back to the ground each winter.
5. SPIKE: A flower structure with flowers, stem-less or very short-stemmed on common length stalk. Example: Gladiolus.
6. SPRAY: Portion of a plant with a number of flowers on one stem.
7. STEM: The main ascending part of a plant.
8. STALK: A stiff stem, which may or may not branch; one or more flowers and buds.
9. BLOOM: Individual flowers; one blossom on a stem. Example: Dahlias, Carnations, Roses all disbudded.
10. SPECIMEN: A single plant, bloom or spike, spray, stalk, or stem.
11. DRY: Free from liquid or moisture. Not wet, damp or moist.

### FLORICULTURE INFORMATION:

- Exhibits in the Floriculture Department must have been grown by the exhibitor within the county, district or community represented by the exhibitor, except classes for arrangements.
- Plants purchased within the last 6 months or purchased cut flowers for exhibiting purposes will not be allowed and may be disqualified.
- The Fair supplies display vases for cut flowers. YOU MUST USE FAIR PROVIDED VASES.

### FLORICULTURE & RULES:

- A. All entries must be brought to the Floriculture building through the Main Street Gate west of the Main Gate (GAS ENGINE ENTRANCE) where arrangements have been made to admit all exhibitors with entries & will be checked off from an official list of participants. (Please refer to Fairgrounds Map)
- B. EXHIBITORS MUST: Provide drainage saucers for plants.
- C. MINIATURES: Must fit in size of arrangement specified.
- D. Dry arrangements must contain **natural dry material**.
- E. ARRANGEMENTS: In all but "Dry" Arrangements, must contain FRESH PLANT MATERIALS AND FLOWERS EXCEPT WHERE OTHERS ARE SPECIFIED.
- F. Accessories, unless specified should be kept to a minimum, and with arrangement must be anchored securely on a rigid base for moving.
- G. Fresh plant material must not be sprayed or dyed.
- H. Exhibits must not occupy an area more than 12" x 18" inches.
- I. PLACE SETTINGS: Service for one to be shown in space 24" wide and 24" long maximum. One placement or cloth (cloth to be folded or swatch of material may be used to indicate color and texture), napkin, china, glasses, and centerpiece. Flat silver NOT to be displayed. Individual tables will not be used. Dishware not to be duplicated two years in a row.
- J. Floriculture judged American system.

### DEFINITIONS

**NOVICE:** Open to amateurs who have not won more than a total of 4 blue ribbons at any previous Amador County Fair.

**INTERMEDIATE:** Open to amateurs who have won 5-10 blue ribbons at any previous Amador County Fair.

**ADVANCED:** Open to amateurs who have won more than 10 blue ribbons with 5 or more years' experience in flower arrangement competition.

# FLORICULTURE

## CUT FLOWERS & FLORAL ARRANGEMENTS

**FORMS & FEES DUE BY: Saturday, July 23<sup>rd</sup> 4 pm**  
**Entries in Place: Thursday, July 28<sup>th</sup>, 7 am – 9 am in THE FLORICULTURE BUILDING**  
**Entries Judged: Thursday, July 28<sup>th</sup> 10 am**  
**Entries Released: Monday, August 1<sup>st</sup> 10 am – noon**

### SWEEPSTAKES FLORICULTURE

*Sponsored by FRANK A*

**1<sup>st</sup> - \$25      2<sup>nd</sup> - \$15      3<sup>rd</sup> - \$10**

### BEST OF SHOW

From Division 300-309

*Award Sponsored by Griff Electric*

### BEST OF DIVISION

*Award sponsored by Fred & Cammie Waters in Memory of  
Former Floriculture Department Supervisor  
June M. Williams*

*\$25 Premium sponsored by The Mother Lode Rose Society  
\$25 Premium sponsored by Amador Water Agency*

## ROSES

### DIVISION 300 – ROSES

One Stem per Vase – Unless Stated Otherwise  
NOTE: Entry form must include correct name of rose  
Entry Fee: \$1.00 per entry per class  
Ribbons – 1<sup>st</sup> thru 3<sup>rd</sup>

### NOVICE ONLY

#### Class

1. Hybrid Teas or Grandiflora, 1 bloom per stem
2. Floribunda, 1 spray, 2 or more blooms

*\$15 Premium sponsored by The Mother Lode Rose Society*

#### Class

3. Miniature, 1 spray, 2 or more blooms per stem

### Open

#### Class

4. Hybrid Teas or Grandiflora, 1 bloom per stem  
*\$15 Premium sponsored by The Mother Lode Rose Society*
5. Teas or Grandiflora, 1 spray, 2 or more blooms per stem
6. Three Hybrid Teas or Grandiflora in one container
7. Most fragrant rose, any type
8. Rose in a bowl, any type, and bowls supplied
9. Floribunda, 1 bloom per stem
10. Floribunda, 1 spray, 2 or more blooms  
*\$15 Premium sponsored by The Mother Lode Rose Society*
11. Floribunda, 3 stems in one container
12. David Austin or English Rose, 1 bloom per stem
13. David Austin or English Rose, 1 spray, 2 or more  
1 bloom per stem
14. Climbers, 1 bloom per stem or 1 spray, 2 or more  
blooms per stem

#### Class

15. Old Garden Roses, 1 bloom per stem, or 1 spray,  
(cont. #15) 2 or more blooms per stem
16. Shrubs, 1 bloom per stem
17. Shrubs, 1 spray, 2 or more blooms per stem  
*\$15 Premium sponsored by The Mother Lode Rose Society*
18. Ground Cover Roses, 1 stem, many blooms
19. Polyanthas, 1 spray, 2 or more blooms per stem
20. Miniature, 1 bloom per stem  
*\$15 Premium sponsored by The Mother Lode Rose Society*
21. Miniature, 1 spray, 2 or more blooms per stem
22. Three Miniature Roses in one container
23. Container grown Miniature Roses
24. Rose Arrangement-Exhibitor's Choice with any  
variety of roses
25. Miniature Rose Arrangement

# FLORICULTURE

---

## LOCAL GARDEN CLUB CONTACTS

### Foothill Garden Club

Laurie Taylor  
209-296-6141

### Mother Lode Rose Society

RayMona Cunha  
209-256-3517

### Sierra Madre

Noreen Goff  
209-223-5540

### West Point Garden Club

Daniel Short  
209-655-1722

## MISCELLANEOUS CUT FLOWERS

### DIVISION 301 - CUT FLOWERS

Entry Fee: \$1.00 per entry per class  
Ribbons - 1<sup>st</sup> thru 3<sup>rd</sup>

#### BEST OF DIVISION AWARD

*Award Sponsored by Kim Toma  
\$25 Premium sponsored by Amador Water Agency*

#### Class

1. Sunflowers, 1 stem
2. Begonias, floated
3. Cannas, 2 stems
4. Dahlia, any colors, 1 stem

#### Class

5. Lilies, one stem only
6. Marigolds, any type
7. Daisy's, any variety
8. Any other not listed above

---

### DIVISION 302 - FEATURE FLOWER - ZINNIA

Entry Fee: \$1.00 per entry per class  
Ribbons - 1<sup>st</sup> thru 3<sup>rd</sup>

#### BEST OF DIVISION AWARD

*Sponsored by The Antique Gardener - Aimee Peterson  
\$25 Premium sponsored by Amador Water Agency*

#### Class

1. Zinderella Zinnia
2. Cactus Flower Zinnia

#### Class

3. Envy Zinnia
4. Giant Zinnia

---

## FRESH ARRANGEMENTS & FRESH TABLE SETTINGS

### DIVISION 303 - FRESH FLORAL ARRANGEMENTS

Entry Fee: \$1.00 per entry per class  
Ribbons - 1<sup>st</sup> thru 3<sup>rd</sup>

#### BEST OF DIVISION

*\$25 Premium sponsored by Amador Water Agency*

#### NOVICE & INTERMEDIATE

#### Class

1. Fair Theme: Around the World In 4 Days
2. All Frills, Incorporate Ruffles
3. Designer's Choice

#### ADVANCED

#### Class

4. Fair Theme: Around the World In 4 Days
5. Rainbow of Colors
6. Black Tie Affair
7. Designers Choice

# FLORICULTURE

---

## DIVISION 304 – FRESH FLORAL ARRANGEMENTS

\*Miniature under 6"\* Petite, not less than 6" or more than 9"  
Be Creative! Accessories Important!!  
Entry Fee: \$1.00 per entry per class  
Ribbons – 1<sup>st</sup> thru 3<sup>rd</sup>

### BEST OF DIVISION

*\$25 Premium sponsored by Amador Water Agency*

#### **NOVICE & INTERMEDIATE**

Class

1. Petite – Purple Arrangement
2. Petite – Fair Theme: Around the World In 4 Days
3. Petite – Designer’s Choice

#### **ADVANCED**

Class

4. Miniature – Purple Arrangement
  5. Miniature – Fair Theme: Around the World In 4 Days
  6. Miniature – Designer’s Choice
- 

## DIVISION 305 – TABLE SETTINGS, FRESH CENTERPEICES

Entry Fee: \$1.00 per entry per class  
Ribbons – 1<sup>st</sup> thru 3<sup>rd</sup>

### BEST OF DIVISION

*\$25 Premium sponsored by Amador Water Agency*

#### **FRESH TABLE SETTINGS**

Class

1. Fair Theme: Around the World In 4 Days
2. Travel
3. International

Class

4. Eclectic
  5. Designers Choice
- 

## DRY ARRANGEMENTS, WALL HANGINGS & DRYTABLE SETTINGS

### **DIVISION 306 – DRY ARRANGEMENTS**

May Include Synthetics  
Entry Fee: \$1.00 per entry per class  
Ribbons – 1<sup>st</sup> thru 3<sup>rd</sup>

### BEST OF DIVISION

*\$25 Premium sponsored by Amador Water Agency*

#### **NOVICE & INTERMEDIATE**

Class

1. Fair Theme: Around the World In 4 Days,  
Incorporate Zinnias
2. Designer’s Choice

#### **ADVANCED**

Class

3. Fair Theme: Around the World In 4 Days,  
Incorporate Zinnias
  4. Designer’s Choice
- 

### **DIVISION 307 - DRY ARRANGEMENTS**

#### **NOVICE & INTERMEDIATE**

Class

1. Petite – Fair Theme: Around the World In 4 Days
2. Petite – All Natural
3. Petite – Designer’s Choice

#### **ADVANCED**

Class

4. Miniature – Fair Theme: Around the World In 4 Days
5. Miniature – All Natural
6. Miniature – Designer’s Choice



# FLORICULTURE

---

## **DIVISION 308 – TABLE SETTINGS, DRY CENTERPIECES**

Entry Fee: \$1.00 per entry per class  
Ribbons – 1<sup>st</sup> thru 3<sup>rd</sup>

### **BEST OF DIVISION**

*\$25 Premium sponsored by Amador Water Agency*

### **DRY TABLE SETTINGS**

Class

1. Fair Theme: Around the World In 4 Days
2. Travel
3. International

Class

4. Eclectic
  5. Designers Choice
- 

## **DIVISION 309 - DRY WALL HANGINGS**

Entry Fee: \$1.00 per entry per class  
Ribbons – 1<sup>st</sup> thru 3<sup>rd</sup>

### **BEST OF DIVISION**

*\$25 Premium sponsored by Amador Water Agency*

### **NOVICE & INTERMEDIATE**

Class

1. Fair Theme: Around the World In 4 Days
2. Designer's Choice

### **ADVANCED**

Class

4. Fair Theme: Around the World In 4 Days
  6. Designer's Choice
- 

# CACTI, BONSAI & POTTED PLANTS

## **BEST OF SHOW**

Divisions 310, 311 & 312

### **DIVISION 310 – BONSAI**

Entry Form must include name of Bonsai  
Entry Fee: \$1.00 per entry per class  
Ribbons – 1<sup>st</sup> thru 3<sup>rd</sup>

### **BEST OF DIVISION**

*\$25 Premium sponsored by Amador Water Agency*

### **BONSAI**

Class

1. Novice Bonsai
2. Bonsai - Informal Upright
3. Bonsai - Formal Upright
4. Bonsai - Cascade
5. Bonsai - Group Planting

Class

6. Shohin
  7. Wind swept
  8. Root on or over stone
  9. Any other not listed above
- 

REMEMBER TO THANK YOUR SPONSORS

# FLORICULTURE

---

## **DIVISION 311 - CACTI AND SUCCULENTS**

Entry Fee: \$1.00 per entry per class

Ribbons – 1<sup>st</sup> thru 3<sup>rd</sup>

### **BEST OF DIVISION**

*\$25 Premium sponsored by Amador Water Agency*

### **CACTI & SUCCULENTS**

Class

1. Collection of cacti grown in one container, 3 or more varieties, judged on quality of specimen.
2. Miniature collection of cacti grown in one container, 3 or more varieties, judged on quality of specimen container not to exceed 6" x 6".
3. Collection of succulents grown in one container, 3 or more varieties, to be judged on quality of specimens.
4. Miniature collection of succulents grown in one container, 3 or more varieties, judged on quality of specimen, container not to exceed 6x6".
5. Most outstanding single specimen of cacti.
6. Most outstanding single specimen of succulent.
7. Jade Tree
8. Euphorbia
9. Any other not listed above

---

## **DIVISION 312 - POTTED PLANTS**

Plants to be in suitable pots no larger than 12" & 12" All pots must have drainage saucers. No aluminum foil.

HANGING PLANTS Must be complete with a suitable hanger.

Entry Fee: \$1.00 per entry per class

Ribbons – 1<sup>st</sup> thru 3<sup>rd</sup>

### **BEST OF DIVISION**

*\$25 Premium sponsored by Amador Water Agency*

### **POTTED PLANTS**

Class

1. African Violet, double, single crown
2. African Violet, single, single crown
3. African Violet, any other not listed above
4. Begonia
5. Fern
6. Geranium

Class

7. Philodendron
8. Potted trees or potted shrubs
9. Topiary
10. Orchid
11. Any other not listed above

### **HANGING PLANTS**

Class

12. Fern
13. Ivy
14. Spider Plant

Class

15. Hanging Basket - any variety
16. Any other not listed above

### **DISH GARDENS**

Must contain 3 or more varieties of living plants

Class

17. Balloon Ride
18. Vintage Tea-Cup Garden

Class

19. Terrarium Garden – Jar or enclosed clear container
20. Miniature Garden

---

## **DIVISION 313 – GARDEN ODDITIES**

(This division does not qualify for sweepstakes or Best of Division.)

Entry Fee: \$1.00 per entry per class

Ribbons – 1<sup>st</sup> thru 3<sup>rd</sup>

Class

1. Most Bizarre or Unique
2. Smallest Cut Zinnia

Class

3. Most Symmetrical
4. Smallest Cut Flower

# FLORICULTURE

## DISPLAY GARDENS

ENTRIES LIMITED TO AMADOR COUNTY

**ENTRY FORMS & FEES DUE BY: Friday, May 13<sup>th</sup> 4 pm**  
**ALL ENTRIES MUST BE STARTED BY Saturday, May 14<sup>th</sup>**  
**ALL ENTRIES MUST BE COMPLETED BY Monday, July 25<sup>th</sup>**  
**ACCESSORIES MUST BE IN PLACE BY Wednesday, July 27<sup>th</sup>, by 9 am**  
**Entries Judged: Wednesday, July 27<sup>th</sup>, 10am**

### RULES FOR GARDENS

1. Open to any non-commercial organization in Amador County.
2. Exhibits are to be made as much as possible of fresh materials. Emphasis is to be on the feature plant and flower material, not on accessories. Plants are to remain in the garden once planted!
3. Material used in display gardens must be sufficiently hardy or well enough rooted to be presented through the of Fair.
4. Floriculture booth space will be allotted as entries are received. When spaces are filled, entries will close.
5. After judging, the exhibits must display a suitable sign 10" X 18", giving the name of the organization. Any emblems or identification shown prior to completion of judging will result in a -10-point loss of total points.
6. All gardens must remain in place and become the property of the Amador County Fair.
7. All gardens are limited to their designated area.
8. All debris from the gardens must be removed from the grounds by the exhibitor.
9. Weeding of the gardens should be started as soon as weather permits and maintained throughout the Fair. Weeding of the gardens MUST be completed by June 15th
10. Gardens that encircle the pond shall have no display decorations using wood, metal, or other material to exceed 36" wide x 24" in height, that obstruct the view of the pond. If you exceed this it will result in a -10-point.
11. Plant Material: Use appropriate plant material to reflect & coordinate with the themed class entered.
12. Up to +10 points may be added for use of the Theme flower, Zinnia – any variety. Theme flower must be present to earn the points but are not required to be planted in the ground. They may be in any container that is part of your garden display and added within the appropriate time frame as listed in the rules.
13. Points will be deducted from the total score for late entry -5, not started by start date 5 or garden not completed by completion date -5, for a possible total loss of -15 points.

***DECORATIVE ITEMS NOT CONTAINING PLANT MATERIAL HAVE TO BE IN PLACE BY 9AM The TUESDAY BEFORE JUDGING & CANNOT BE REMOVED UNTIL CLOSING TIME LAST DAY OF FAIR. ALL DECORATIVE ITEMS PLACED IN GARDEN AT THE OWNER'S RISK!***

# FLORICULTURE

## DISPLAY GARDENS

### BEST SUN LOVING GARDEN

*Gift Certificate Sponsored by Big Oak Nursery*

### BEST THEME GARDEN

*Premium Sponsored by Amador Flower Farm*

### BEST SHADE GARDEN

*Premium Sponsored by Gordon Hill Flower Shop – Germolus & McCarthy Families*

### BEST COUNTRY GARDEN

*Premium Sponsored by Frank A*

### DIVISION 314 – GARDENS

Entry Fee: \$20.00 per Entry

Premiums Offered per Class

<b>1<sup>st</sup></b>	<b>2<sup>nd</sup></b>	<b>3<sup>rd</sup></b>
<b>\$75</b>	<b>\$65</b>	<b>\$55</b>

Judged Danish System for ribbons, then American System for the prize monies

#### Class

1. Sun Loving Garden: Using appropriate plant material.
2. Shade Loving Garden: Using appropriate plant material.

#### Class

3. Theme Garden: Using the Fair Theme: "Around the World In 4 Days"
4. Country Garden: Using appropriate plant materials

NOTE: GARDENS ARE OFFERED TO PREVIOUS YEAR'S EXHIBITORS FOR RENEWAL FIRST. IF THERE IS A NON-RENEWAL, GARDENS ARE THEN OFFERED ON A FIRST COME BASIS. TO BE ADDED TO THE WAITING LIST FOR AN OPEN GARDEN, PLEASE CONTACT THE ENTRY OFFICE AT (209) 245-6921

### SCORECARD FOR JUDGING

Selection of Plant Material	25%
Design	25%
Proportion of Scale	15%
Originality	25%
Accessories	10%
Total	100%