



A Quick Snapshot of: **Alyssa Hill**

COLLABORATIVE

A team player, I believe in: genuinely committing to shared goals; being trustworthy and reliable; celebrating others' success; accepting responsibility for mistakes; and learning from those around me.



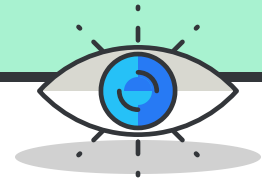
CONFIDENT

I walk through the door with a hand outstretched for a handshake. In a group, I seek to understand before seeking to be understood. I present ideas with assurance and poise, not bravado or arrogance.



INSIGHTFUL

Focusing on transparency and honesty, I step into authentic discussions with partners, clients, and colleagues. Approaching decision making with insight and empathy leads to decisions based on trust and relationships that stand the test of time.



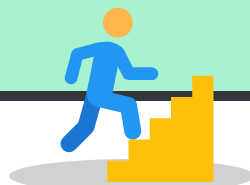
EXTRAVERTED

Described as enthusiastic, gregarious, and outgoing, I enjoy meeting new people and embracing novel experiences. A true extravert, I thrive in social situations and gain energy from others.



DRIVEN

I am self-driven, not externally pushed, to go above and beyond. Working remotely has cultivated steely self-discipline. I earned 5 promotions/merit-based raises in 6 years. I graduated Summa Cum Laude at JMU and earned a competitive assistantship and a 4.0 in graduate school.



PASSIONATE

When I believe something is important, I pursue that goal with conviction and energy. Professionally, I am passionate about developing long-term partnerships with clients. Personally, I am passionate about fostering homeless dogs.

