

# NATIONAL SCHOOL OF BUSINESS , BANGALORE

**Location :** Electronic City, Bengaluru, Karnataka, India  
**Area:** 25000 ft<sup>2</sup>  
**Year:** 2023

## ABOUT

The National School of Business is a higher education institution offering both graduate and post-graduate courses in business management. Driven by a collaboration-focused, holistic pedagogy, NSB has cemented itself as one of Bangalore's reputed business schools.

In response to their rapid growth, the institution conceived of a new center of academia adjacent to its existing campus. Working with the institution's board of directors, we developed a vision for this new block: a unique, landmark form that would refresh the institution's identity and exemplify its community-centric ethos, all while fulfilling the heavy programmatic requirements.



## SITE SURROUNDINGS

NSB Bangalore is situated amidst a diverse landscape that combines urban and rural elements in its immediate surroundings.

To the west of the site, a railway line delineates its boundary. Towards the north, on the opposite of the main road, continues NSB's property, currently housing ancillary facilities.

Singena Agrahara Road serves as the access point to the site, located on its northern side.



## CLIENT'S BRIEF

The programmatic requirements posed by the education board were:

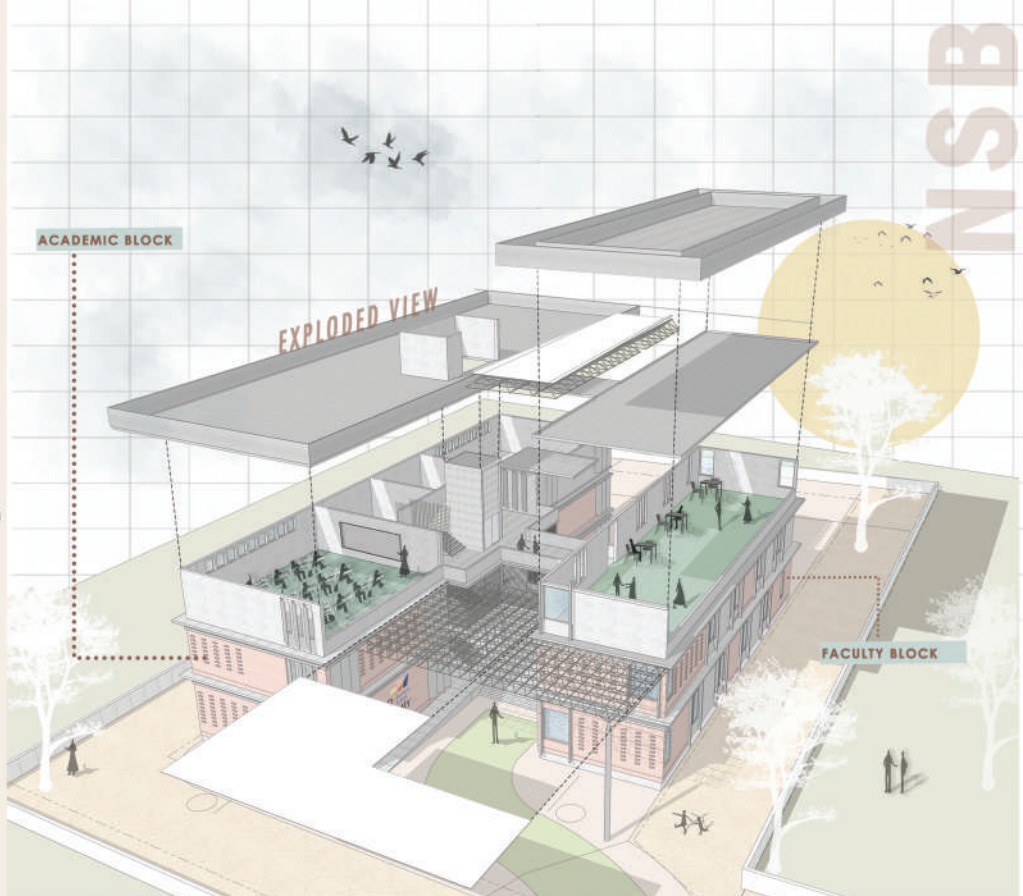
- 40+ Individual cabins for professors for focused research
- Multiple classrooms to accommodate 600 students in various configurations.
- Support facilities like conference room, washrooms, Dean's Cabin and exam control room.

## DESIGN CHALLENGES

The project faced tight deadlines, with a design phase lasting 10 days. To achieve a functional setup within an academic year, a simple, flexible layout was aimed at.

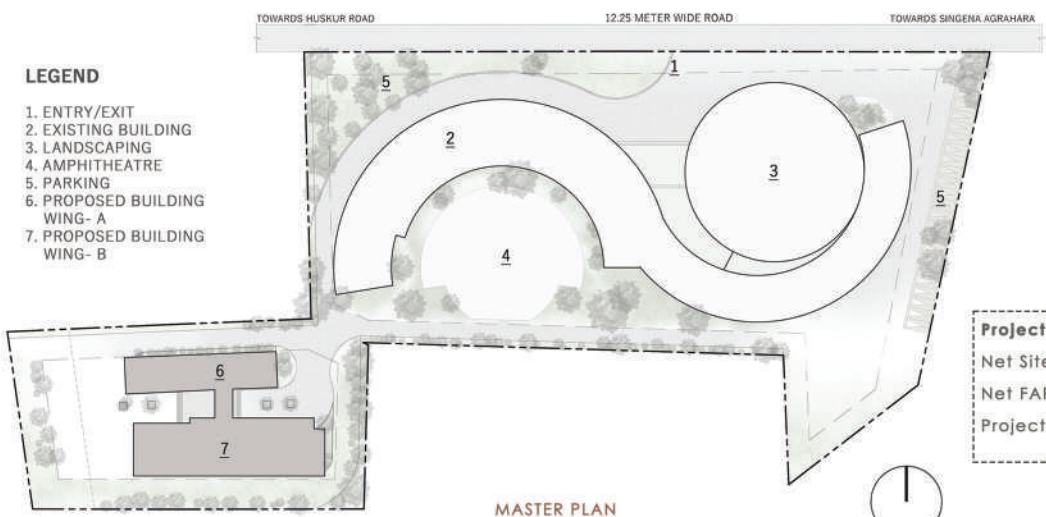
The second challenge was in working with a restricted buildable area arising from the site's location next to a railway line.

In addition to the basic peripheral 6m setback, a mandated 30m setback from the railway line decided the buildable area on the 33,500 sqft site and delineated the profile of the layout



## LEGEND

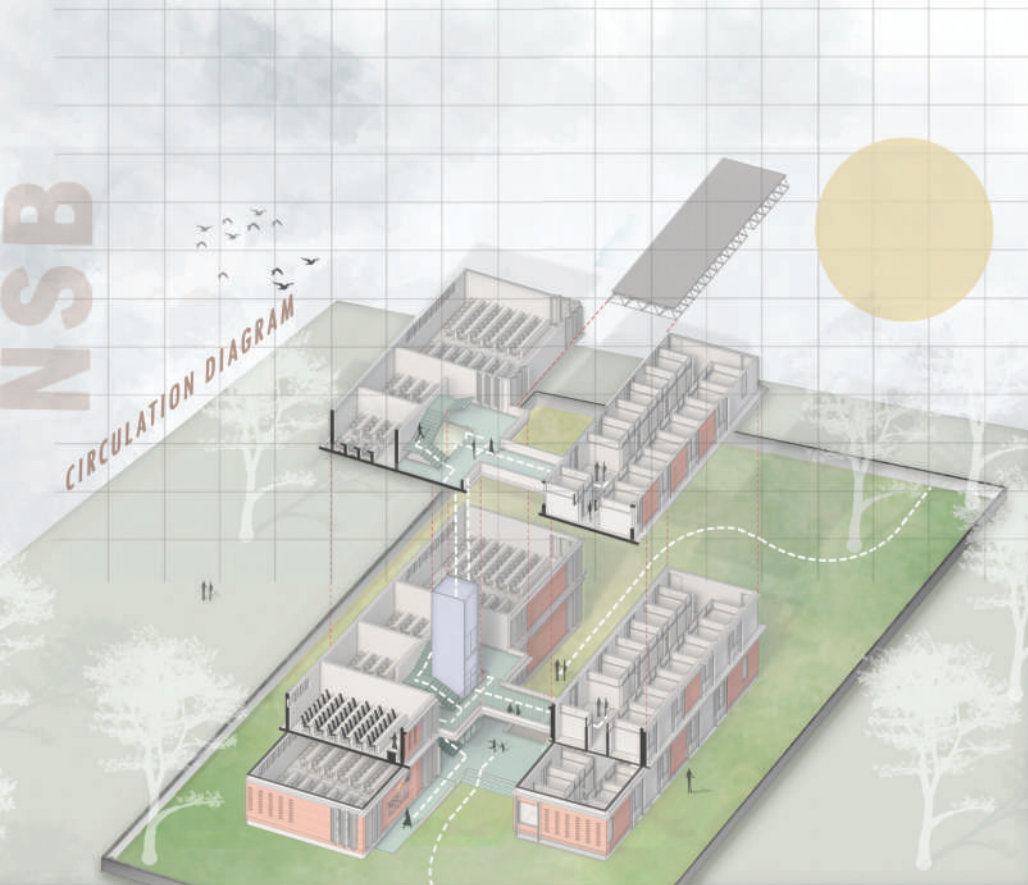
1. ENTRY/EXIT
2. EXISTING BUILDING
3. LANDSCAPING
4. AMPHITHEATRE
5. PARKING
6. PROPOSED BUILDING WING- A
7. PROPOSED BUILDING WING- B



**Project Details**  
 Net Site Area - 13050.93 sq.mts  
 Net FAR Area - 4707.45 sq.mts  
 Project Cost - INR 4Cr.

MASTER PLAN





**DESIGN APPROACH**

The campus layout was designed to creatively address limited FAR allowance and varied functionality. It was split into two wings, academic and faculty, and an outdoor spine was used as the primary circulation path.

The spine connects the existing block to the new for pedestrian transition and extends westwards to an area designated for tree growth. A large entry plinth with local Sadarahalli stone serves as a formal welcome, while a metal bridge connects the upper floors.

**DESIGN FEATURES**

The faculty block is a two-story structure with 40 independent staff rooms, emphasizing research and focused work.

The ground floor accommodates the Director's cabin and conference rooms, prioritizing easy accessibility.

Design focuses on optimizing natural daylight and ventilation to reduce reliance on artificial lighting and air-conditioning during a substantial portion of the day.



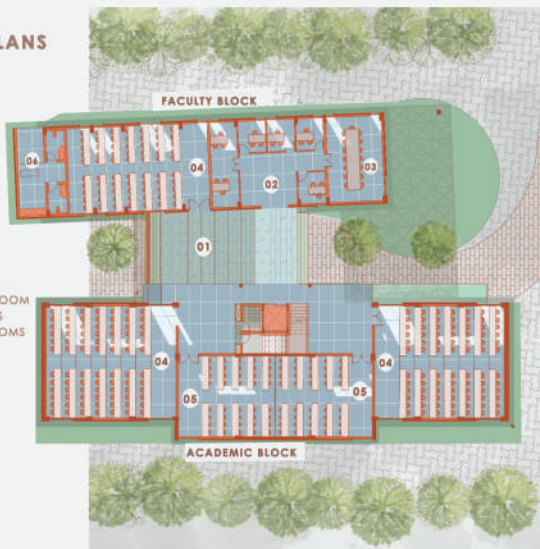
**MATERIALITY**

Both the blocks feature block work walls a second skin of wire-cut bricks from Malur, strategically enhancing passive cooling and internal thermal comfort.

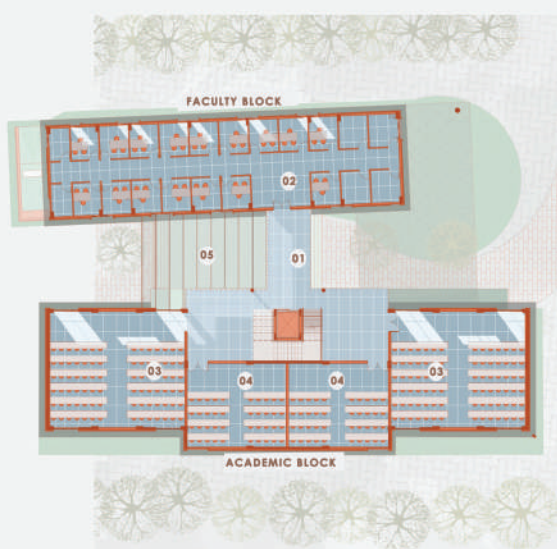
The intermittent projection of bricks along the façade creates dynamic shadows, adding dimension to the simple elevation.

The brick skin allows the building to stand out in the surrounding landscape without being a harsh contrast to the greenery.

**FLOOR PLANS**



GROUND FLOOR PLAN

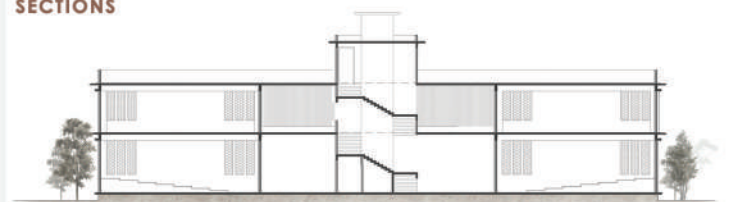


FIRST FLOOR PLAN

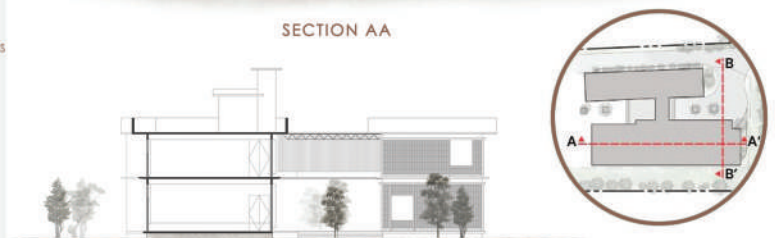
- LEGEND**  
 1. LOBBY  
 2. STAFF ROOM  
 3. DIRECTORS ROOM  
 4. CLASSROOMS  
 5. TUTORIAL ROOMS  
 6. WASHROOM

- LEGEND**  
 1. BRIDGE  
 2. STAFF ROOM  
 3. CLASSROOMS  
 4. TUTORIAL ROOMS  
 5. LOBBY ON THE GROUND FLOOR

**SECTIONS**



SECTION AA



SECTION BB



