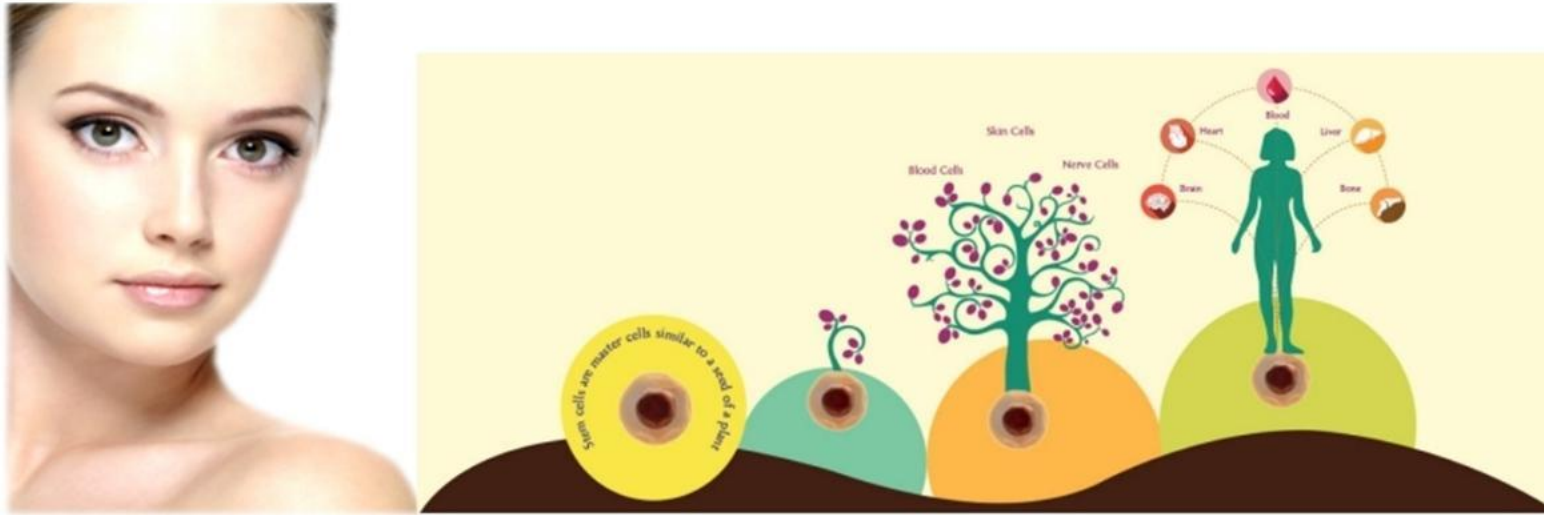




# PCL POWER BOOSTER



## Key point of skin regeneration is stimulating formation of stem cells

Continuous regeneration of stem cell formation is a must and the most important factor to stay young.

**POWER BOOSTER** is the unique product which shall keep regenerating formation of stem cells.

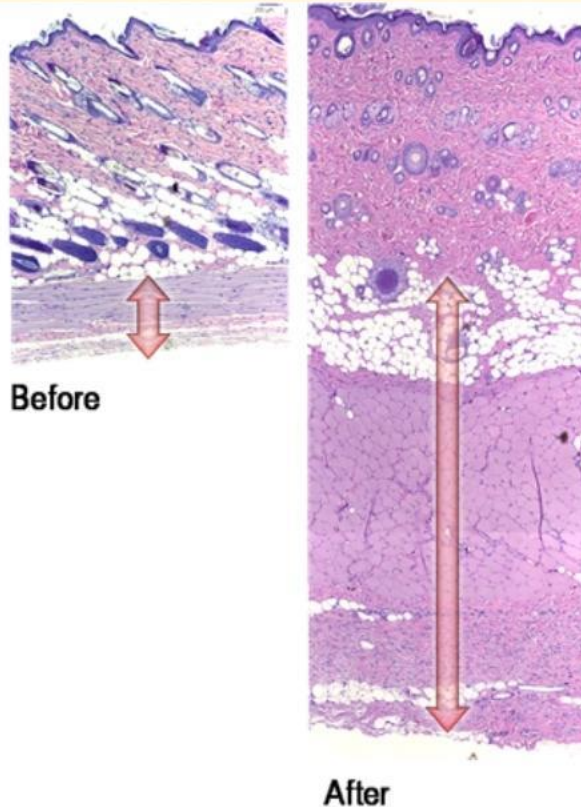
**POWER BOOSTER** shall have effects of skin lifting, whitening, scar care and especially for recovering from aged skin.

## PCL (Polycaprolactone)

After being injected in the body, PCL is encapsulated by collagen presents in the body, escapes from phagocytosis, and then induces neo-collagenesis.

Microscopic images on the right-side (3 months post-injection) show PCL surrounded with collagen deposition and the thicker skin than before.

PCL has already been shown to have neo-collagenesis ability through global clinical trials and is currently being used as a main component of a filler.



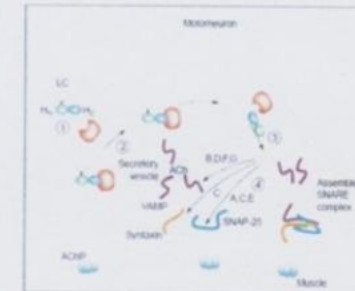
## Botulinum peptide

### ATGC-BOLC

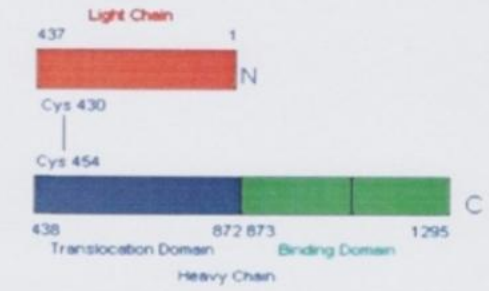
#### Light Chain of Botulinum Neuro toxin + Transmittable peptide

**Clostridium Botulinum** is Gram-positive, rod shaped bacterium which can be found anaerobic environment; in deep soil or swamp. It is microorganism which forms endospore, and it produce botulinum toxin which is main material of Botox.

Botulinum toxin affect muscular activity by their direct action on the nervous system; it affects activity by presynaptic block of the releases of neurotransmitters such as Acetylcholine.



Botulinum toxin mechanism



Structure of BoNT/A

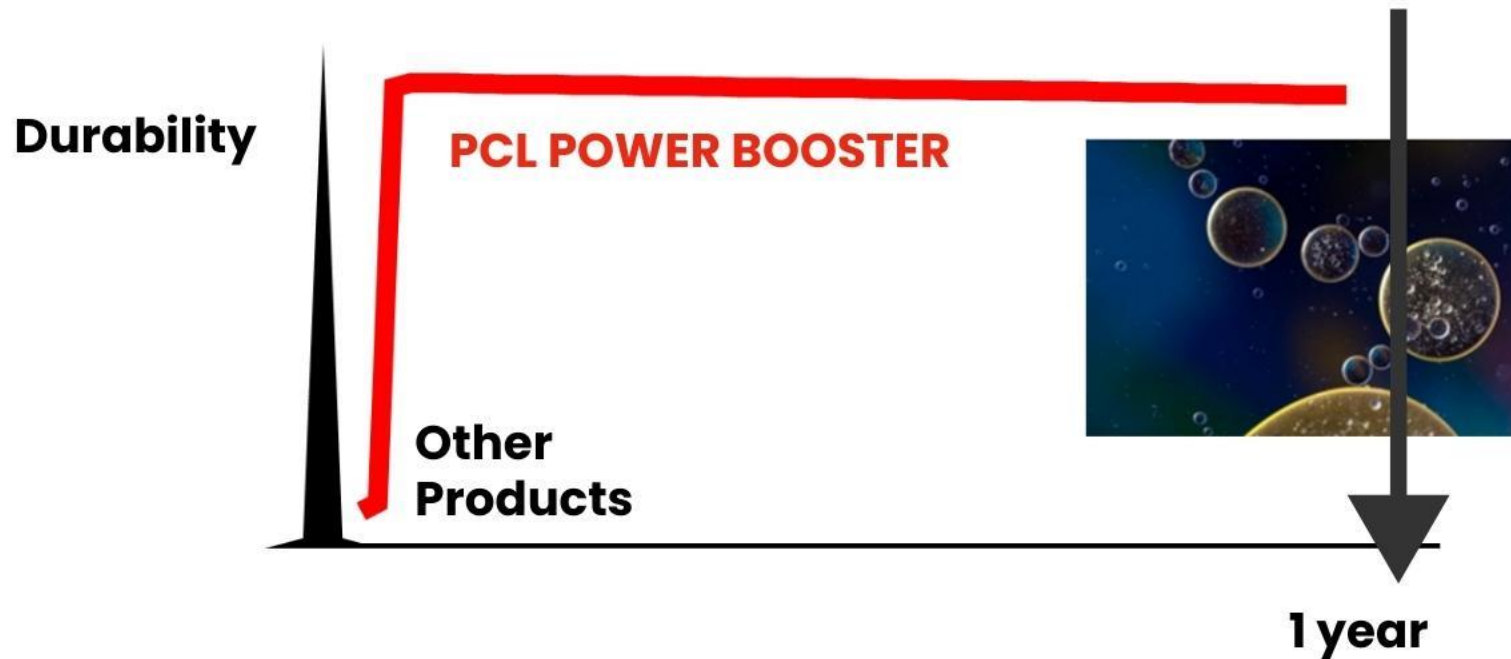
ATGC has developed peptide which can be transmitted into dermal and neuron cell.

With those peptide and light chain of botulinum toxin type A, synthesized into recombinant fusion protein.

**Collaboration of Botulinum peptide and PCL allows quick absorption into the skin deeply and produce glowing, soft, elastic, whitened skin.**

# CORE TECHNOLOGY

Sustainable regeneration of stem cells by using PCL POWER BOOSTER



- Only PCL POWER BOOSTER can sustainably regenerate stem cells in the world.
- Based on biogradable and biocompatible polymer technology accelerate stem cell regeneration.
- Unlike other products that prolife stem cells only one time,
- PCL Power Booster helps continuous regeneration of stem cells more than a year.

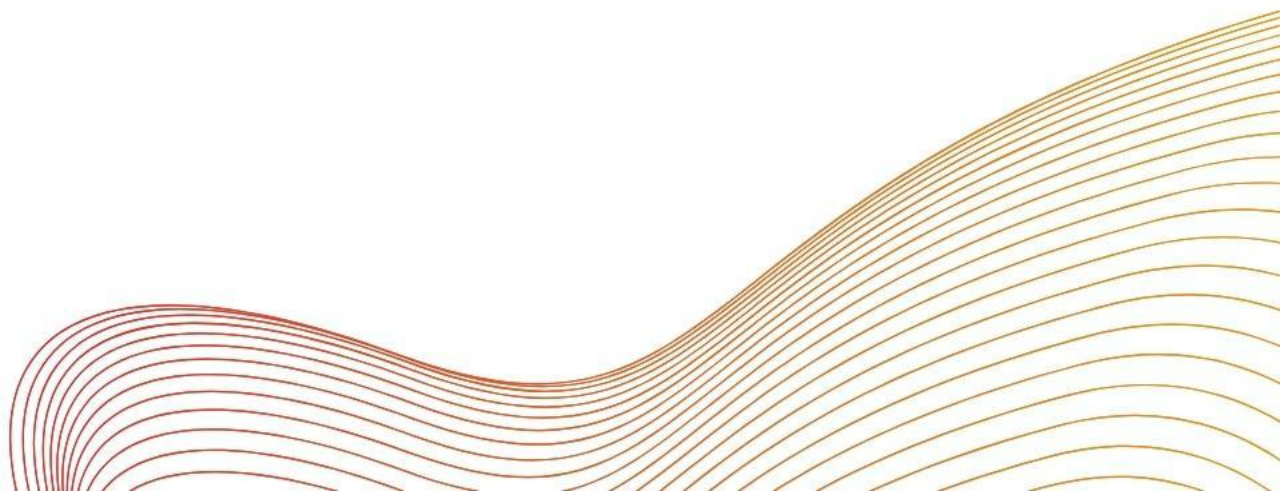


# CORE TECHNOLOGY



**Stem Cell Regeneration  
Natural Neo-collagenesis**

- PCL POWER BOOSTER is used for anti-aging and damaged skin care.
- It rejuvenates skin in the way that cannot be replaced by moisturizer and produce elastic and glowing skin cells.
- By stem cell regeneration, PCL POWER BOOSTER fundamentally helps skin lifting and shining.



# CORE TECHNOLOGY



PCL POWER BOOSTER

Lifting

Moisture

Wrinkle Care

Regenerate Collagen

Whitening

Stem Cell Accelerant

# How to use **PCL POWER BOOSTER?**





# How to use **PCL** **POWER BOOSTER?**



Meso Machine





## **PCL POWER BOOSTER** INJECTION TECHNIQUES

**After 2 Sessions at 1 month interval  
1 vial per session**

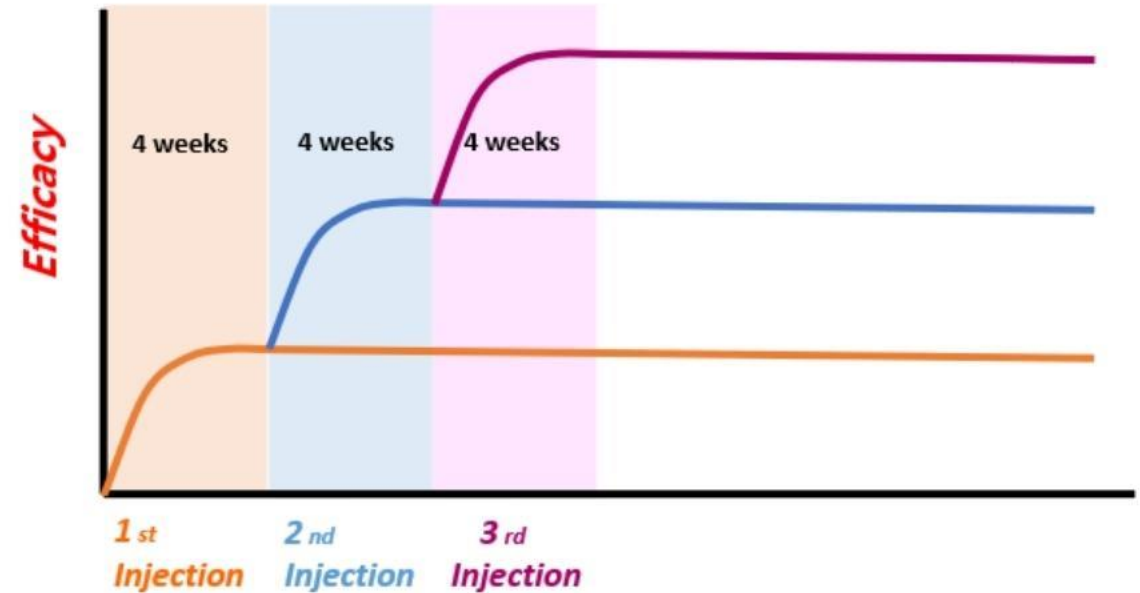
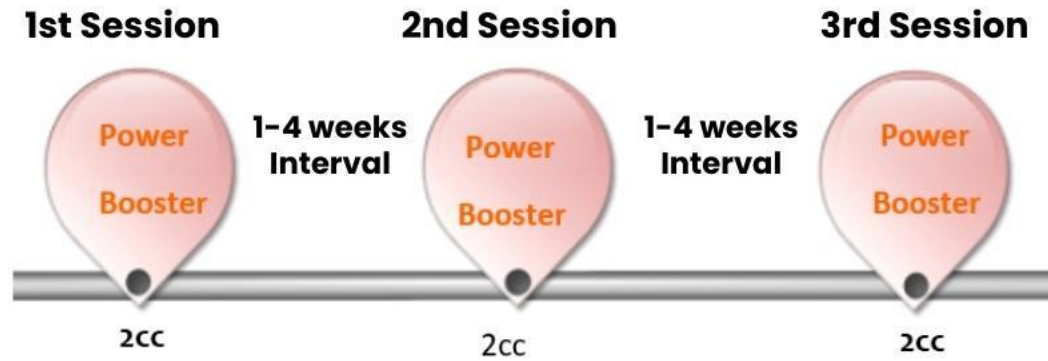




**After 3 Sessions at 1 month interval  
1 vial per session**

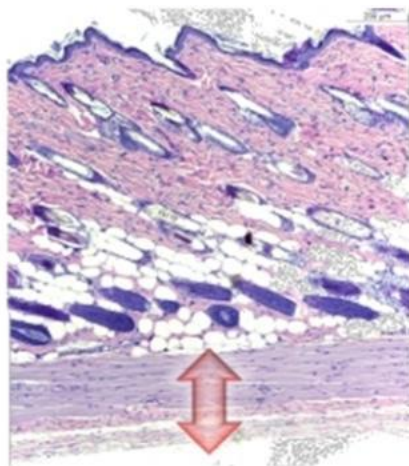
## **PCL POWER BOOSTER** INJECTION TECHNIQUES

# TREATMENT CYCLE

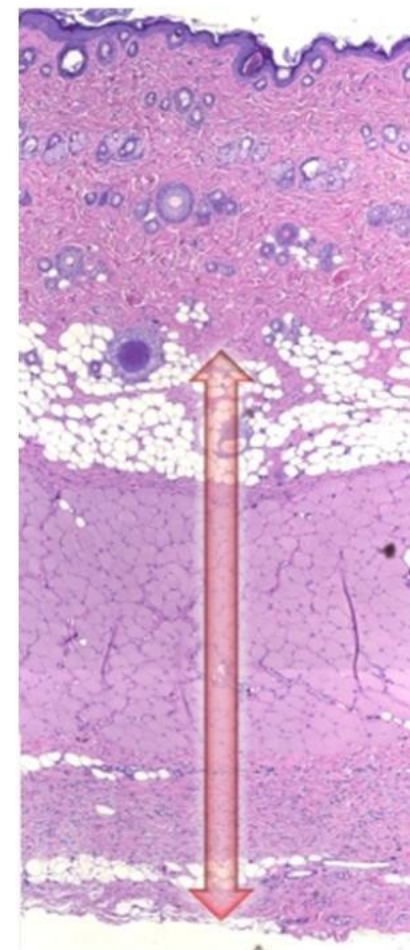
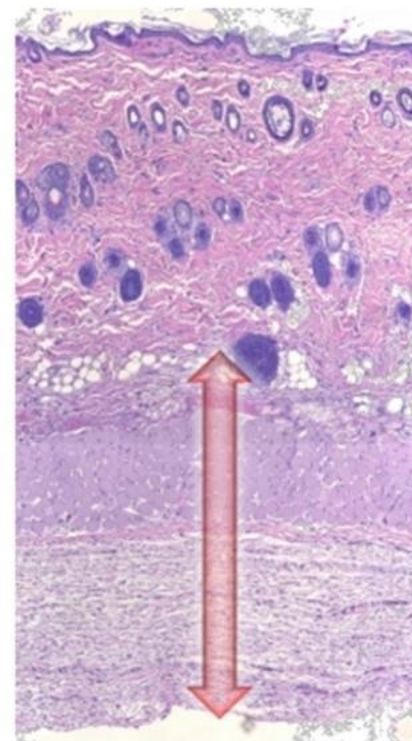
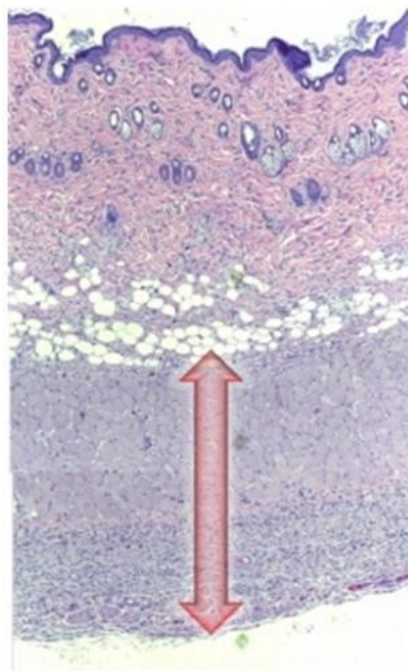


- Inject 2cc of PCL POWER BOOSTER into dermal layer by MTS or normal Meso Therapy technique.
- Recommended to use Meso Machine to maximize brightening efficacy.
- After first treatment(total 3), doctor decide necessity of additional injection.

# TREATMENT CYCLE



Before



After 4 weeks