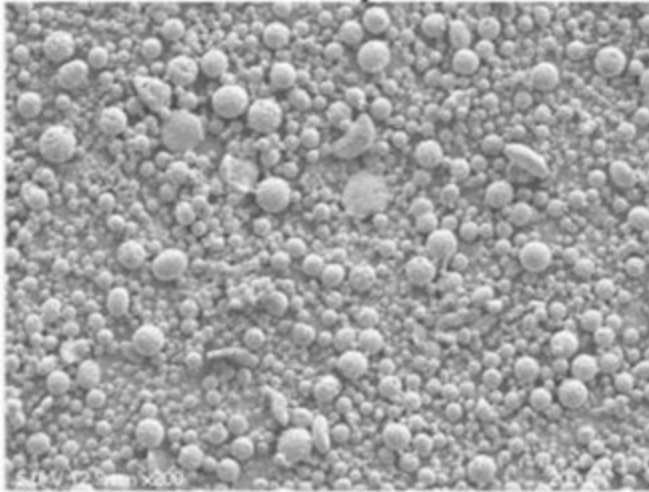
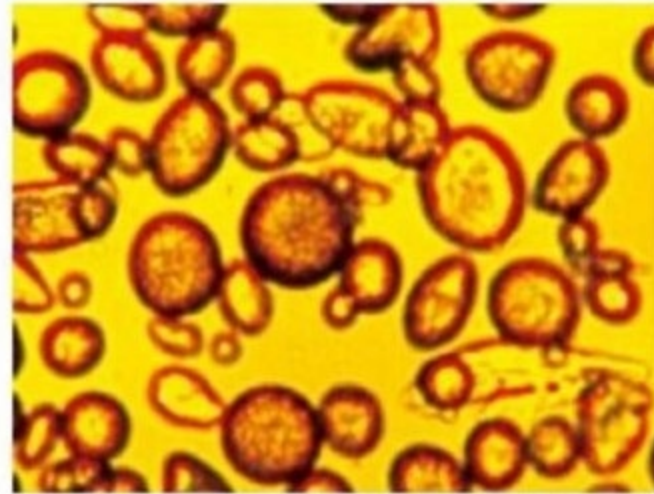


Porous Microspheres

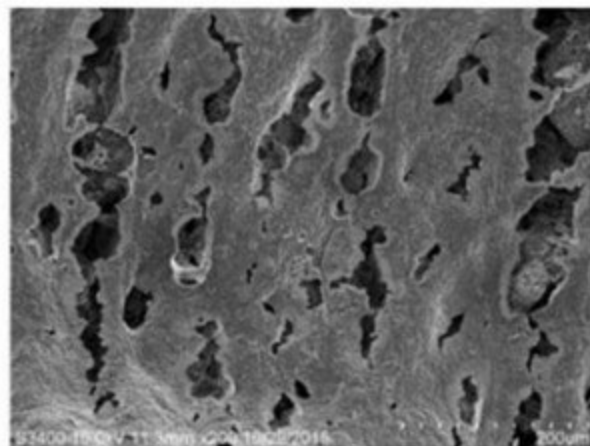
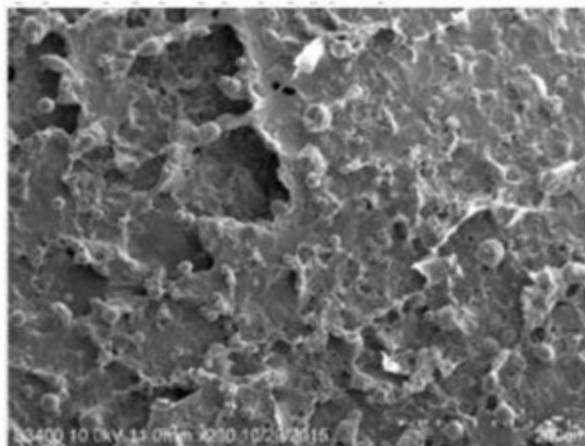


**X50 (50x microscope)
Magnification Photograph**

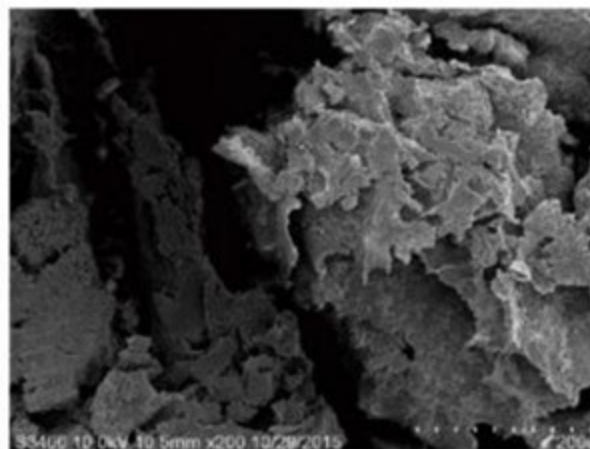
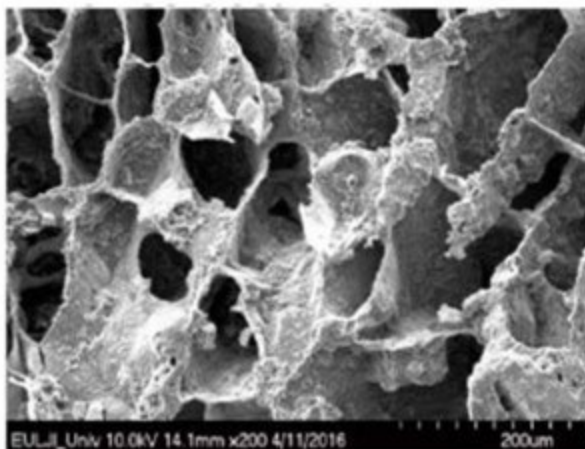


**X1000 (1000x microscope)
Magnification Photograph**

Surface Structure



Internal Structure



CORE TECHNOLOGY

Introduction of Core Technology

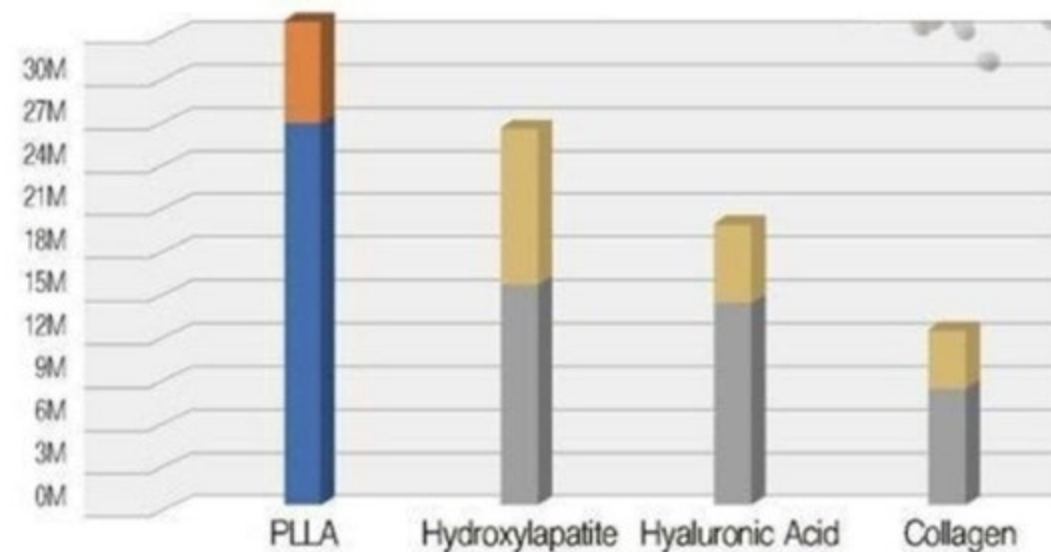
[Product Characteristics]

- Microparticle composition (20-80 microns)
- Small amounts of bio-organization
regeneration and excellent collagen generation effects
- Maintaining a natural fluoride effect for a long time
- Injection of the needle without blockage is possible
with a constant particle shape



NST construction

(Non-solvent manufacturing technology)



[Comparison advantage with Sculptra]

- Sculptra is an amorphous form and ShangAi is composed of a spherical shape of a certain size (excellent in volume generation between layers of skin)



Sculptra



Power Col Tra

CORE TECHNOLOGY



Target Effect

Target : Area requiring off-curved volume up

Effect : Promote overall volume growth in the face area and the creation of new collagen in the skin



01

- Safe
- Natural effect

02

- Castle
- Simple process
- No side effects

03

- Biodegradable
- Bioabsorption

Introduction of Core Technology

Procedure sequence

Sterilizing water or saline solution for injection

Power Col Tra 1vial + PNSS 10cc + Lidocaine 1mL



- Before the procedure 15-30, mix **PNSS 10cc** the main sterile or saline solution and 1cc of lidocaine for 5-10 minutes.
- Use an 18G syringe to collect the appropriate amount of a spot solution.
- Treatment is carried out with a 25G-27G sterile cannula needle.
- Inject to SMAS layer below subcutaneous fat to increase lifting effect and make dermis tissue thick.
- Perform treatment at 1cc per injection site.

Introduction of Core Technology

Procedure sequence



- Before the procedure 15-30, mix **PNSS 10cc** the main sterile or saline solution and 1cc of lidocaine for 5-10 minutes.
- Use an 18G syringe to collect the appropriate amount of a spot solution.
- Treatment is carried out with a 25G-27G sterile cannula needle.
- Inject to SMAS layer below subcutaneous fat to increase lifting effect and make dermis tissue thick.
- Perform treatment at 1cc per injection site.



POWER COL TRA **INJECTION TECHNIQUES**

After 2 Sessions at 1 month interval
6 vial per session

	Lycol	Ellanse	Aesthefill	Sculptra	Power Col Tra	Advantages
Ingredients	Dextran+PMMA	PCL (Polycaprolactone)	PLA (Poly-lactic-acid)	PLLA(Poly-l-lactic-acid)	PLLA(Poly-l-lactic-acid)	Same ingredient of Sculptra
Period	24months	Over 24months	18-24months	18-24months	18-24months	
Interval time	1-2 times	1times (reprocedure after 6-8weeks)	2-3cc dilute 1time, 6-9cc dilute 2-3times	3-4times (every 4 weeks)	3-4times (every 4 weeks)	
Effect time	Right after	Right after	After 10-30mins	After 2-20hours	After 5-10mins	Quick effect
Specification		Use organic solvent	Use organic solvent	Use organic solvent	Solvent-free method	Improve Safety
Particle Shape		globular	globular	Amorphous	globular	Globular fine particles

Introduction of Core Technology

Procedure sequence

Sterilizing water or saline solution for injection

Power Col Tra 1vial + PNSS 10cc + Lidocaine 1mL



- Before the procedure 15-30, mix **PNSS 10cc** the main sterile or saline solution and 1cc of lidocaine for 5-10 minutes.
- Use an 18G syringe to collect the appropriate amount of a spot solution.
- Treatment is carried out with a 25G-27G sterile cannula needle.
- Inject to SMAS layer below subcutaneous fat to increase lifting effect and make dermis tissue thick.
- Perform treatment at 1cc per injection site.

