

2020 Wheaton Regional Park Master Plan Update



M-NCPPC Montgomery Parks
Presentation to Neighbors for Northwest Branch
December 3, 2019
Chuck Kines, Park Planner/Coordinator



Why are we here? What do we want from you?

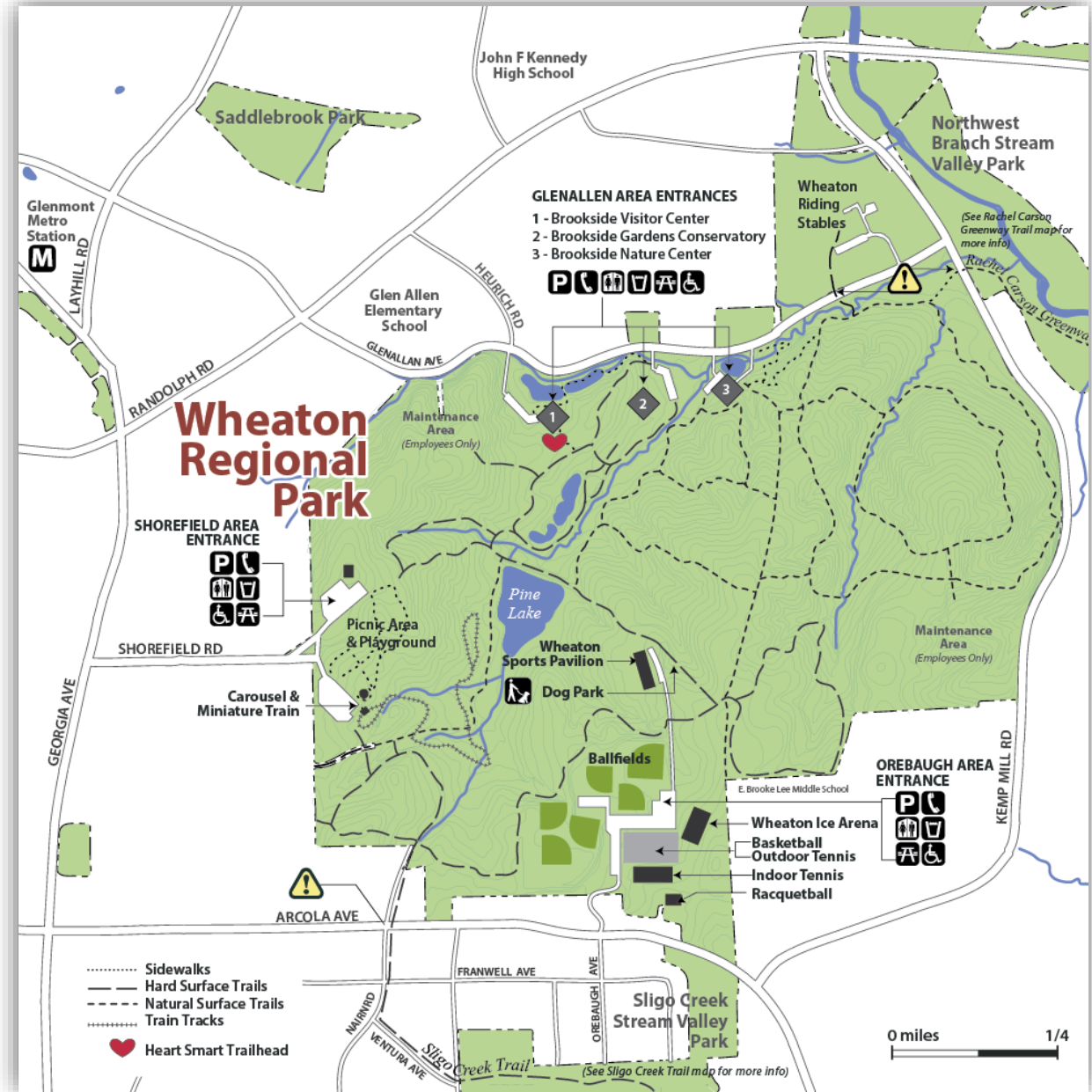
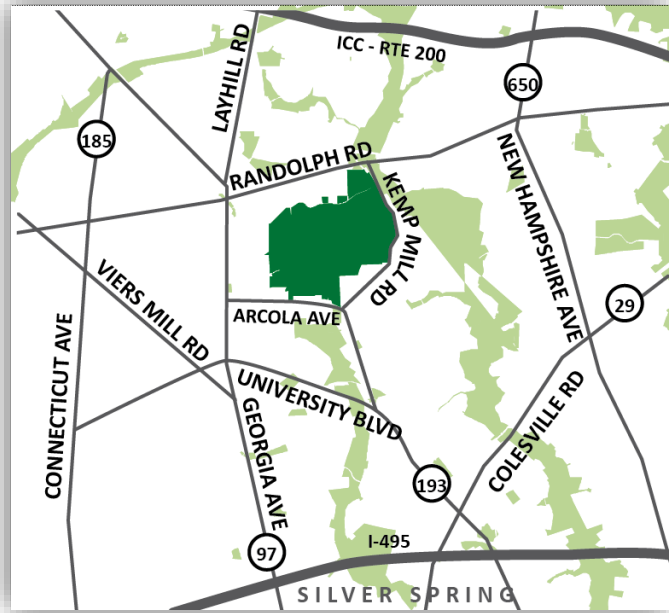
- **Inform you about the master plan scope and schedule**
- **Discuss planning process, community engagement**
- **Solicit your ideas for improvements, changes and upgrades to the park**
- **Respond to your questions and concerns**



Wheaton Regional Park and Vicinity Aerial



The Park Today



Distinct Park Activity Areas

- 1. Brookside Gardens
- 2. Shorefield Area
- 3. Rubini Athletic Complex
- 4. Biodiversity Area/Forest
- 5. Maintenance Yard
- 6. Equestrian Riding Center
- 7. Brookside Nature Center

Wheaton Regional Park Base Map



Distinct Park Activity Areas

Wheaton Regional Park Base Map



- 1. Brookside Gardens
- 2. Shorefield Area
- 3. Rubini Athletic Complex
- 4. Biodiversity Area/Forest
- 5. Maintenance Yard
- 6. Equestrian Riding Center
- 7. Brookside Nature Center



What can people do in Wheaton Regional Park?

Shorefield Area



Distinct Park Activity Areas

Wheaton Regional Park Base Map



- 1. Brookside Gardens
- 2. Shorefield Area
- 3. Rubini Athletic Complex
- 4. Biodiversity Area/Forest
- 5. Maintenance Yard
- 6. Equestrian Riding Center
- 7. Brookside Nature Center



What can people do in Wheaton Regional Park?

Rubini Athletic Complex



Distinct Park Activity Areas

Wheaton Regional Park Base Map



- 1. Brookside Gardens
- 2. Shorefield Area
- 3. Rubini Athletic Complex
- 4. Biodiversity Area/Forest
- 5. Maintenance Yard
- 6. Equestrian Riding Center
- 7. Brookside Nature Center



What can people do in Wheaton Regional Park?

Brookside Gardens and Nature Center



Distinct Park Activity Areas

Wheaton Regional Park Base Map



- 1. Brookside Gardens
- 2. Shorefield Area
- 3. Rubini Athletic Complex
- 4. Biodiversity Area/Forest
- 5. Maintenance Yard
- 6. Equestrian Riding Center
- 7. Brookside Nature Center



What can people do in Wheaton Regional Park?

Forest and Equestrian Riding Center



Plan Schedule

2015-2016	June 2016	SUMMER 2016	Winter 2018	*NEW* FALL 2019 – SPRING 2020
Attend Community Events and Meetings including Taste of Wheaton, Friendship Festival, and the Recreation Advisory Board	Issues and Outreach	Public Meeting #1 Plan Concepts to the Community for Input	Public Meeting #2 Plan Recommendations to the Community for Input	Targeted outreach to broader diversity of stakeholders Focus on communities within 1 mile of the park



Public Input Opportunities



Public Outreach versus Community Engagement



Public Outreach

- **Specific project**
 - Wheaton Regional Park Master Plan
- **Defined timeframe**
 - Goal is to present draft plan to the Planning Board in Fall 2020
- **Solicit input**
 - Broader effort to inform the larger community about the plan
 - Ask for their feedback



Community Engagement

- **Communities within 1 mile of the park**
- **Build relationships, initiate a dialogue**
- **Long-term, on-going process**
 - Collaborative Master Planning
 - Advocacy
 - Implementation
- **Form a strong network**
 - Residents
 - Community organizations
 - Businesses
- **Particularly focus on communities that have typically been less involved in park planning**
 - Latino/Hispanic
 - Asian/Asian-American
 - Black/African-American



Wheaton Regional Park Base Map



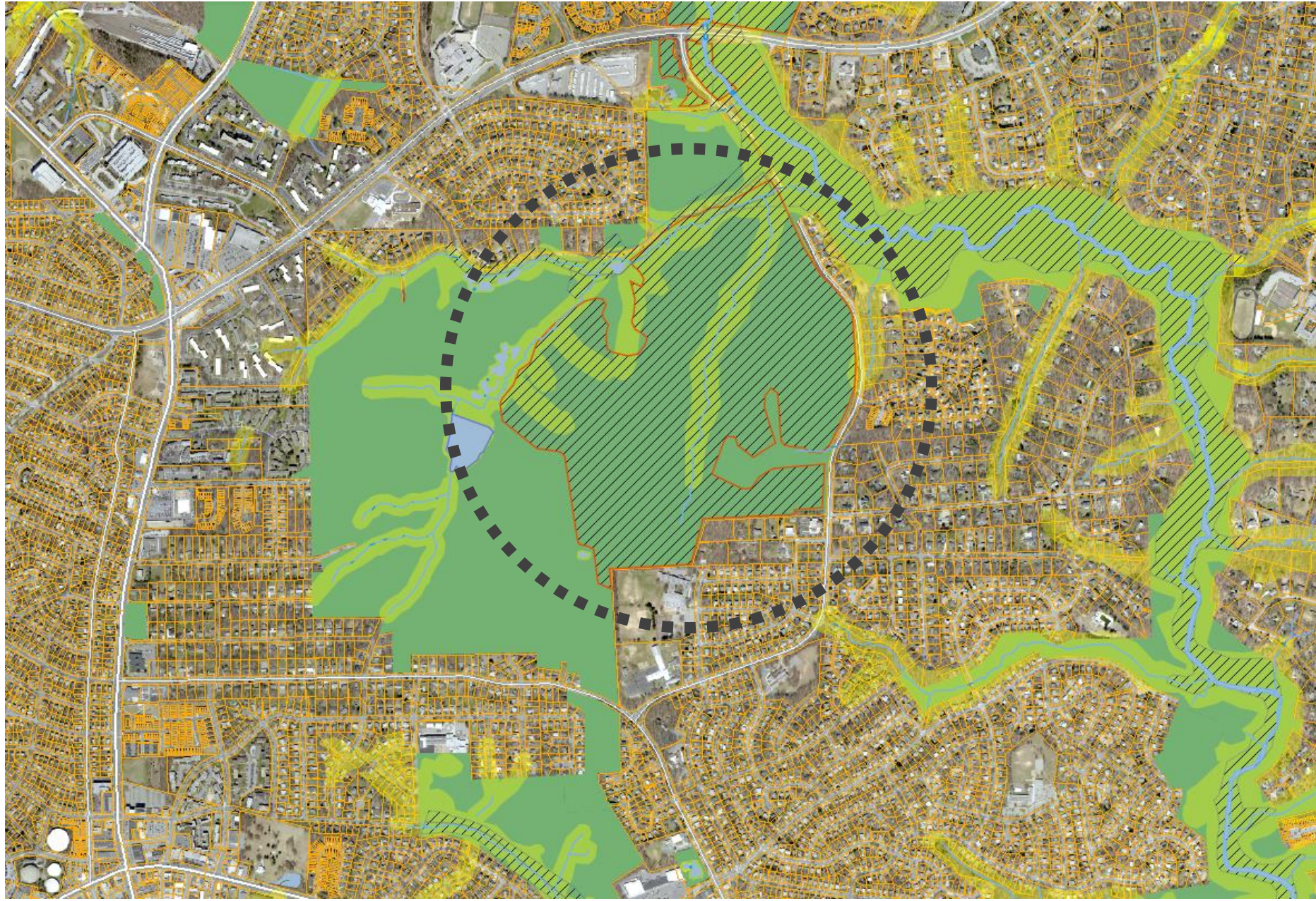
- Parks**
- STATUS**
- Existing
- Proposed
- Property Lines of City
- Park Trails**
- SURFACE, STATUS**
- Hard Surface Trail
- Hard Surface Connector
- Hard Surface Path
- Hard Surface Connector
- Transmission Lines**
- TR_CODE**
- 100202 - Electrical Transmission Line
- 100203 - Electrical Transmission Station
- 100204 - Natural Gas Transmission Line
- 100205 - Hazardous Liquid Transmission Line
- Plan Facilities
- Easements**
- Type**
- Open Conservation
- Park Conservation
- Scenic
- Stream Legacy
- General Conservation
- Open Natural Areas
- Discovery Areas
- Springs & Seeps
- Streams
- Hydrologic Features
- Wetlands
- 100-year Floodplain (FEMA)
- Roadways (MNCPPC right-of-way)
- Stream Wetland Buffer
- Steep Slopes**
- % Slope**
- 10-25%
- 25%+
- Steeple Soils
- Special Protection Areas
- MD State Archeological Resources
- Historic Preservation Easements
- 2008 Strategic Plan Cultural Resource Sites
- National Register Historic Districts
- MD Historic Preservation - Districts
- MD Historic Preservation - Sites
- Cultural Resource Localities A-1a - Sites
- Cultural Resource Localities A-1a - Districts
- Wetlands
- Building Response
- Planting Lots & other Transpiration (tree up)
- National Register Individual Sites
- Localities A-1a Historic Districts
- Localities A-1a Individual Resources
- Open Plan Historic District Boundaries
- Water Plan Individual Sites
- National Register & Water Plan Historic Districts
- National Register Historic Districts
- Park Owned Historic Sites
- Roadways (MNCPPC right-of-way)
- SRHA
- RI
- IMAGERY 2013**
- RGB**
- Red - SARC_1
- Green - SARC_2
- Blue - SARC_3
- Thems & Sites

0 300 600 Feet

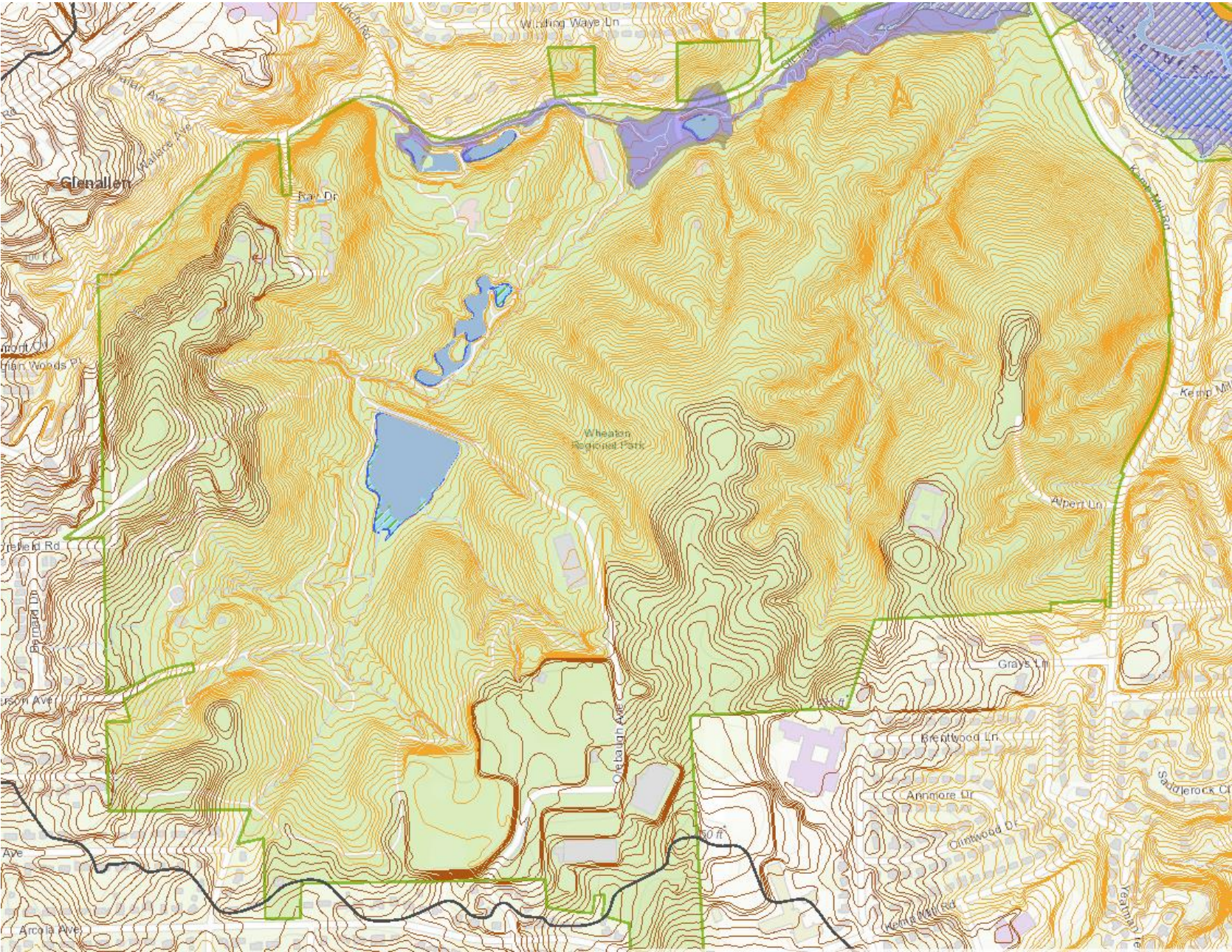
05NOV2015
Sources: M-NCPPC, 2013



Resource Atlas – Biodiversity Area



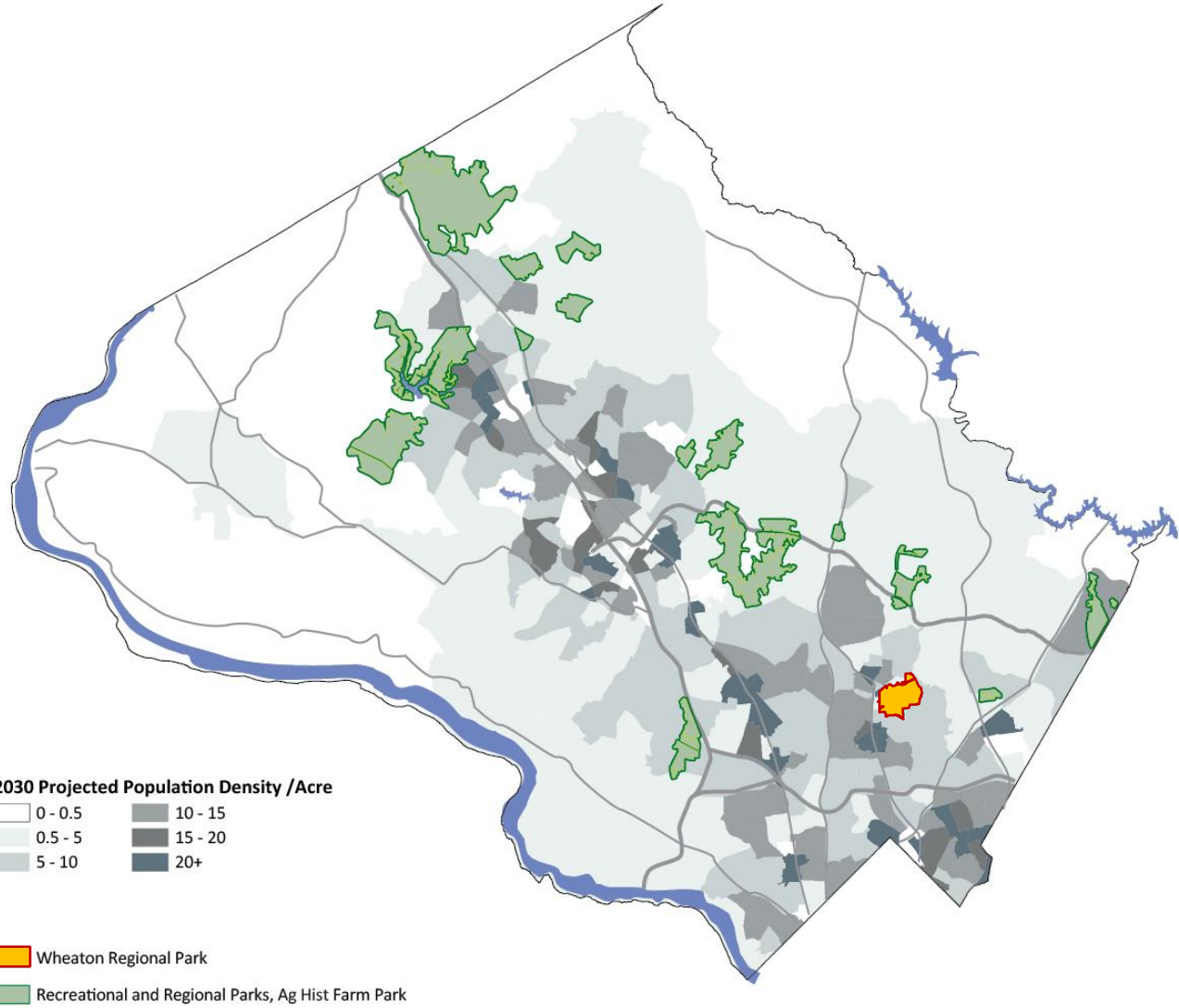
Topography



Park Analysis

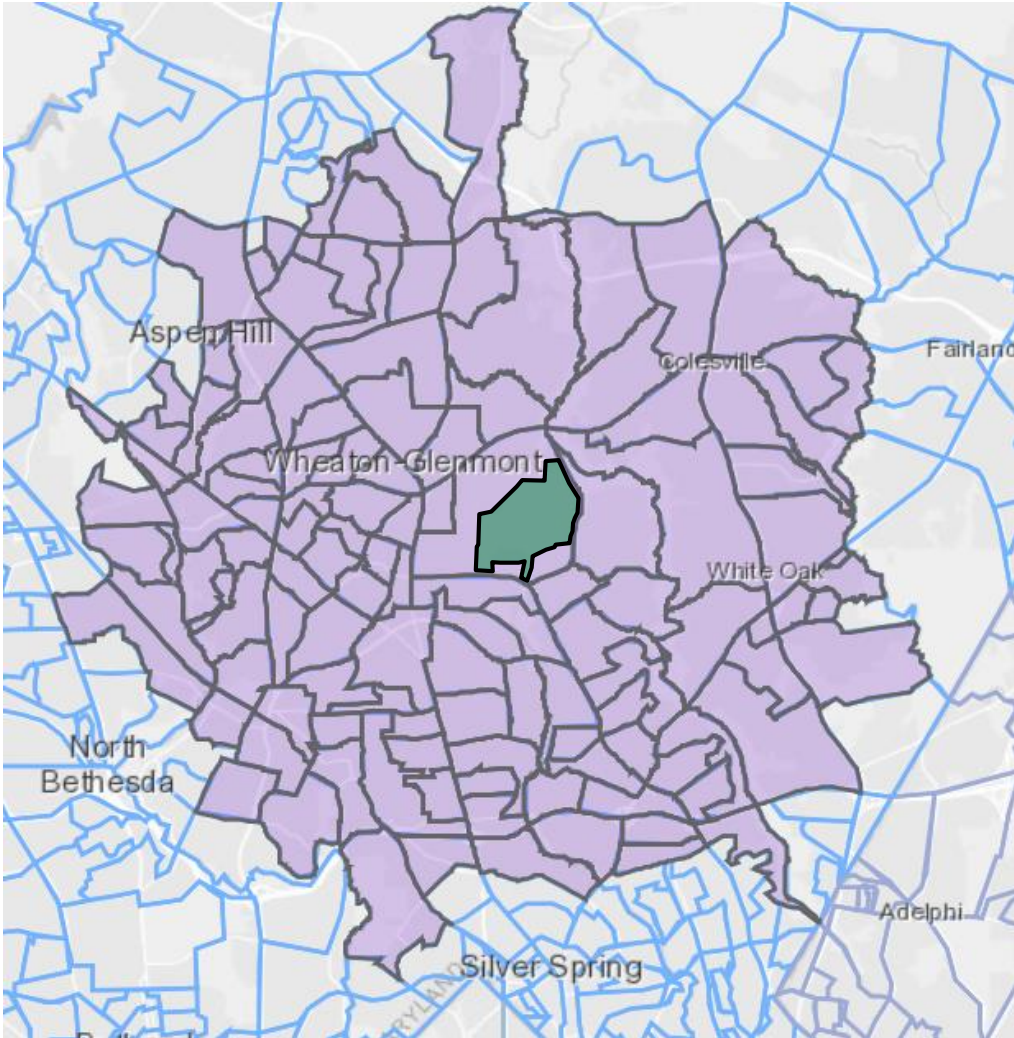
Service delivery needs

- 2030 Projected Population Density/Acre
Recreational and Regional Parks and
Agricultural Farm Park



Demographics*, approximate 2-mile radius of the park

Category	Number	Percent
Total Population	189,971	N/A
White	69,921	37%
Black	41,561	22%
Asian	21,107	11%
Hispanic/Latino	50,931	27%
Households with primary language other than English	81,288	43%

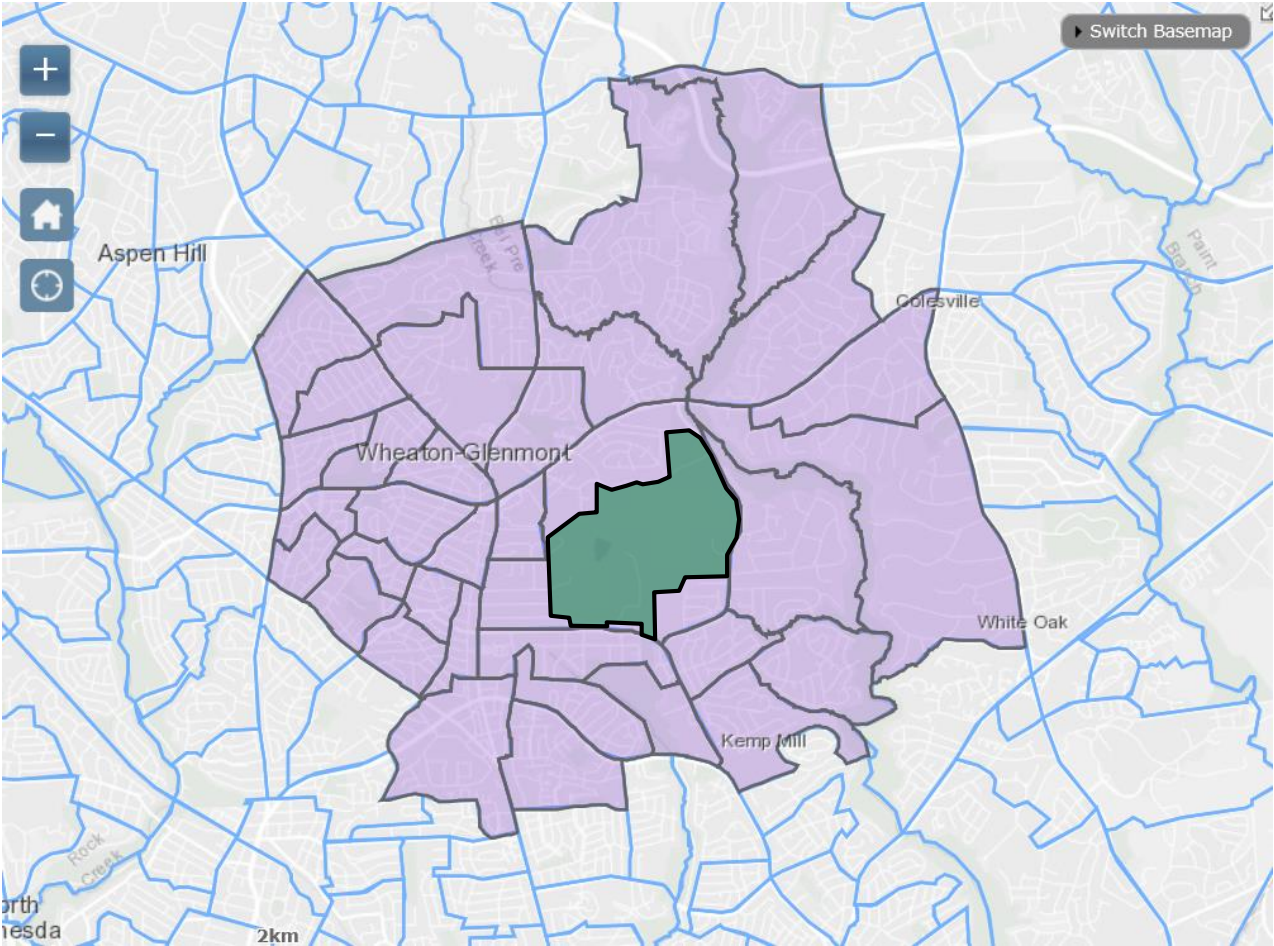


* Regional{Pop}Stats, Interactive Mapping of Census Data in & around Montgomery County, MD (<http://mcatlas.org/RegionStats/#>)



Demographics*, Immediate vicinity of the park

Category	Number	Percent
Total Population	57,710	N/A
White	18,324	32%
Black	11,300	20%
Asian	7,104	12%
Hispanic/Latino	18,928	33%
Households with primary language other than English	27,902	48%



* Regional{Pop}Stats, Interactive Mapping of Census Data in & around Montgomery County, MD (<http://mcatlas.org/RegionStats/#>)



For what issues are we taking a closer look?

- **Improve trail connectivity, walkable access and pedestrian safety**
- **Identify opportunities for adding new facilities, including rectangular ballfields**
- **Identify opportunities to re-purpose aging or defunct facilities**
- **Address more current or emerging trends (futsal, pickleball, bike/ped safety garden)**
- **Correct the issue that park is hidden and doesn't have a "front door" (including signage)**
- **Address reality that much of the park functions more like a local/community park**



DRAFT Wheaton Regional Park MP Objectives:

Protect and enhance natural areas

Provide additional recreation amenities to better serve diverse communities

Improve access, visibility and wayfinding

Improve and expand regional trail connections and the existing trail system

Create a unifying theme of architecture, landscape, and signage

Improve parking and traffic circulation, pedestrian safety, and ADA compliance

Emphasize historical, cultural and natural resources interpretation

Improve maintenance and operational efficiency

Pursue acquisitions to expand and improve the park



Plan Schedule

FALL 2019 – SPRING 2020	FALL 2020	FALL 2020
<p>Targeted outreach to broader diversity of stakeholders</p> <p>Focus on communities within 1 mile of the park</p>	<p>Staff Draft Plan to the Planning Board</p> <p>Planning Board Public Hearing</p>	<p>Work Session(s) and Plan Adoption</p>
		

Public Input Opportunities



Thank you!



Charles.Kines@MontgomeryParks.org
301-495-2184

