

# FOR LEASE



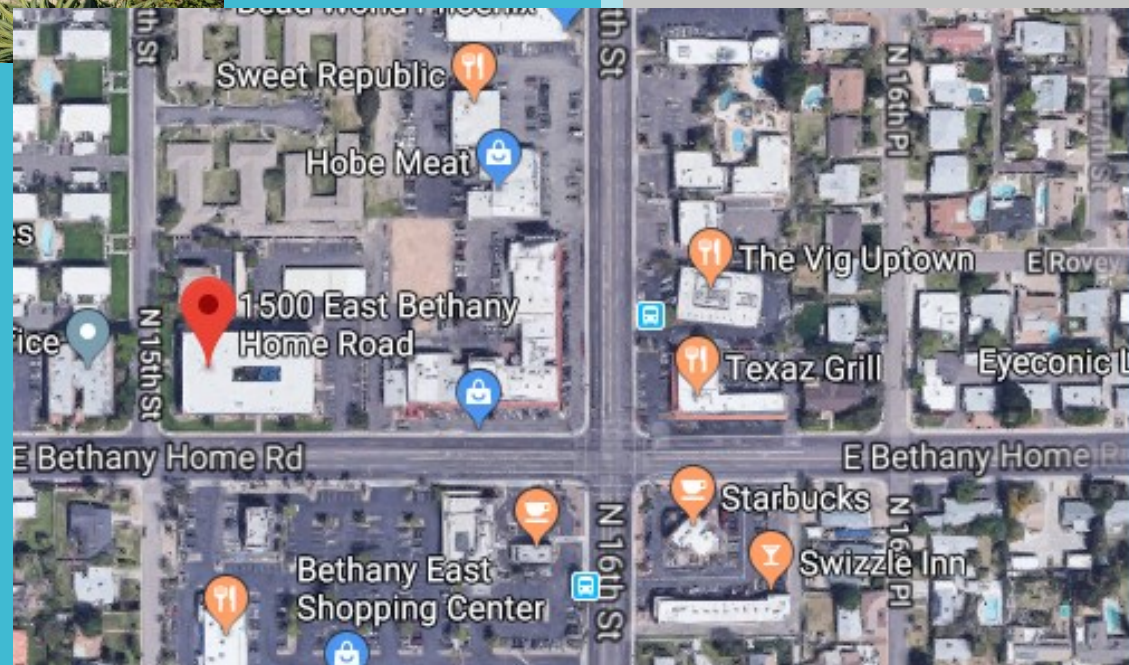
Location: 1500 Bethany Home Road  
Suite 110 - Relet

Size: 2,184 sf

Parking: 2 Reserved Covered Spaces

Rate: \$22.00/sf year; Discounted rent  
up to six months!

Located within walking distance of Luci's,  
Starbucks, Dunkin, The Vig, Z'Tejas, Zipps,  
Phoenix City Grill and many more.



## For More Information:

Cheryl Bonner  
T: 480-658-0008  
C: 602-531-3333  
F: 480-656-0549

Devona Haddock  
T: 480-658-0007  
C: 480-580-7701  
F: 480-656-0549



Commercial Real Estate Services  
480.658.0007  
www.H7cre.com  
*Creating Equitable Solutions*

7 Private Offices

2 galley kitchenettes

Glass and natural light throughout

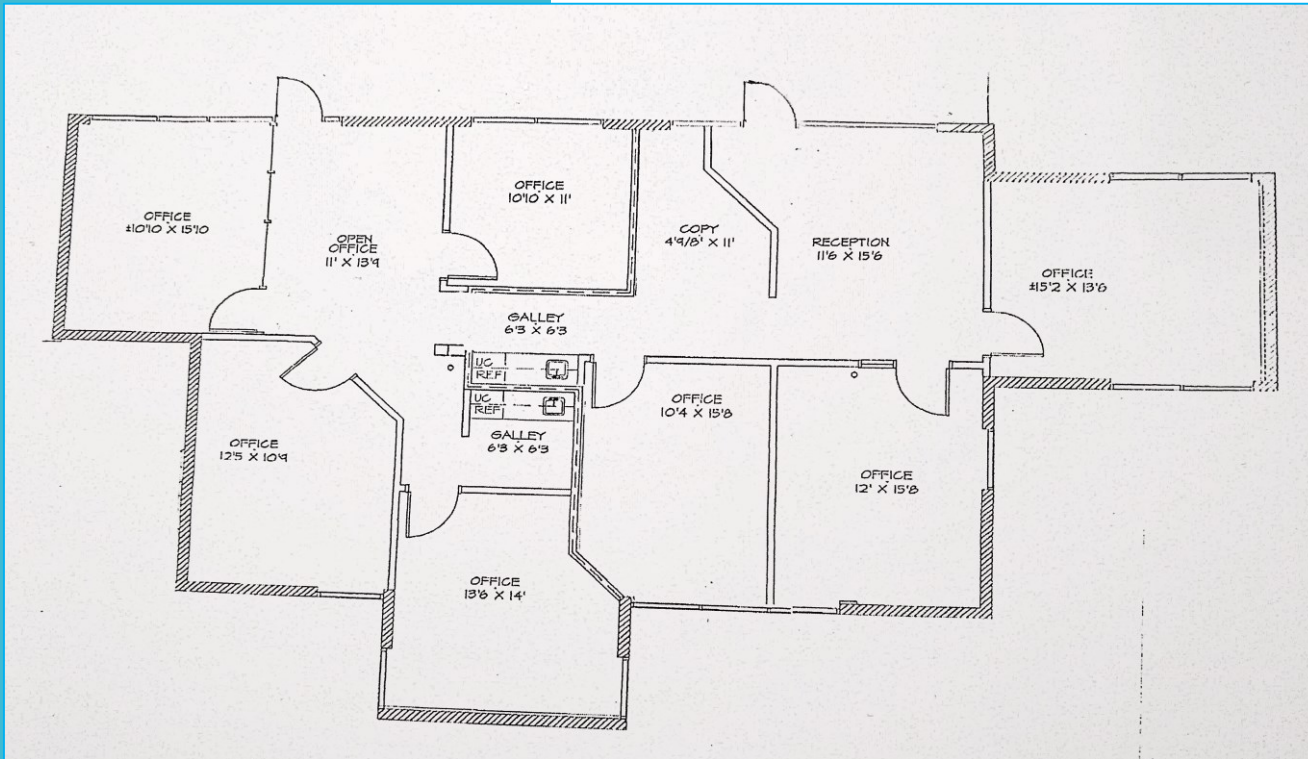
Located on southwest corner of building next to the main entry gate;

Building is secured nightly/weekends;

Beautiful interior courtyard with newly renovated common areas;

Excellent visibility from Bethany Home Road, only ¼ mile west of Arizona 51 .

High visibility signage along Bethany Home



For More Information



Commercial Real Estate Services  
480.658.0007  
[www.H7cre.com](http://www.H7cre.com)  
*Creating Equitable Solutions*

Cheryl Bonner  
T: 480-658-0008  
C: 602-531-3333  
F: 480-656-0549

Devona Haddock  
T: 480-658-0007  
C: 480-580-7701  
F: 480-656-0549