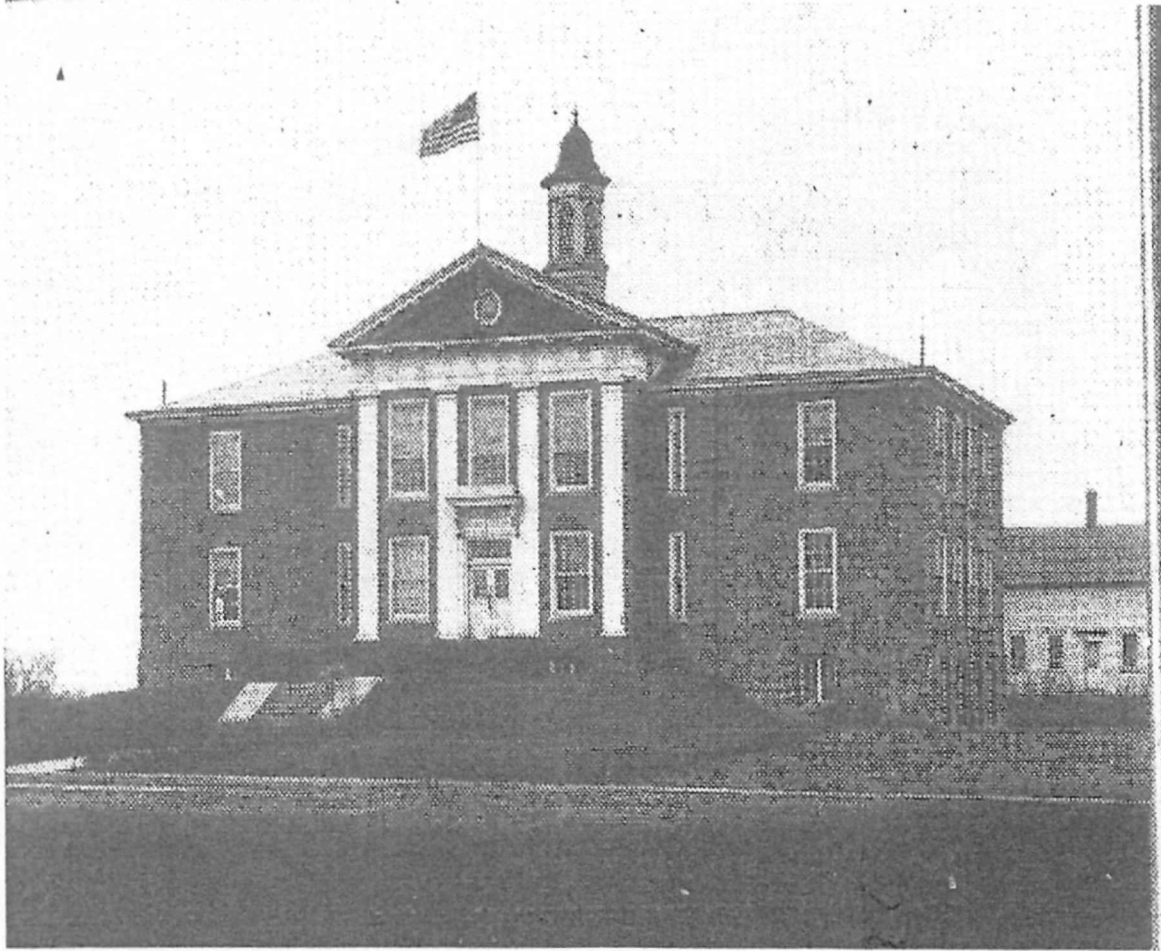


**Historic Center School
Mantua Township, Ohio
March 1, 2014**



Built in 1914

Listed on the National Register of Historic Places September 2013

Review Prepared by Portage County Regional Planning Commission

Brief Overview

Mantua Center School was built in 1914. It served the community as a public school until it was closed in early 2000's and then purchased by Mantua Township. The debt service is to be paid off by November 2014. The School was listed on the National Register of Historic Places on September 4th 2013. There was not any information available about the importance of the school at this time by the National Register.

During the almost 10 years of ownership by Mantua Township the school has largely been unused; hence the need to facilitate various community discussions and research what other repurposed schools have done. More recently the school has been used for Township offices and to facilitate a community center activity. The gymnasium has been used for various events; such as, rentals and sporting activities but on limited basis and it is not actively marketed beyond the community for its availability.

Mantua Township desires to find a use or uses that would put the school into a more continuous use and help to cover the cost of operation and maintenance. See Maps 1 and 2 for an aerial and existing land uses in the Center School area. It is anticipated that some of the space would be used for Township offices and possibly other community related space such as a youth/senior center.

Portage County Regional Planning Commission (RPC) was asked to facilitate community meetings, and also to meet with the Mantua-Shalersville Chamber of Commerce, talk with realtors, local colleges, and social service providers to gauge their interest and/or seek feedback on the potential use of the school.

While the RPC staff is aware of maintenance needs and recognizes that the school is not entirely in move-in ready condition, the RPC is not qualified to make estimations on cost for either maintenance or operation of the building. The RPC role is to facilitate and gather information to be shared with Mantua Township Trustees and the community as whole.

Community Meeting #1, October 22, 2013

Top responses as selected by the participants that evening:

The School should be:	The School should not be:	Concerns with the School:
Township Offices Civic Center Torn Down Senior Center Sheriff's Office Kids Center Day Care Education Garage Service Business Incubator	Torn Down Sold A Levy to Support Residential Divisive Issue Day Care County Offices	Cost of Maintenance Being Demolished Being a Levy Being Divisive Being a Ballot Issue Loss of History Indecision Being Sold Retaining the Annex

See appendix #1 for all the comments

This community meeting was meant to be informal and for information gathering purposes. Based upon the responses there are some strong opinions as to what should happen. There is also a noticeable divide with respect to using the school or disposing of it (whether selling it or demolishing it). These strong feelings have likely contributed to the indecision of local officials.

Community Meeting #2 January 29, 2014

RPC presented our findings to-date in an informal manner. The purpose of this meeting was to provide an update and to see if any other opinion would be expressed. The following list includes all suggestions received presented in order:

- Use Debt Service as a Maintenance Fund
- Reach out to local Fire Dept. as another location to improve response time
- Used for voting and renting annex
- Antique store like in Aurora
- Township to create a social media page to share ideas
- Grants need and end use and or a plan
- Currently a community center, one day a week starting in March
- 3 Township offices in their now, Finance, Zoning and Cemetery
- Something like the RAC in Ravenna (gym)
- More communication with the citizens from the Trustees to know what's happening
- Use as a storm shelter
- Renovations should be staged to spread out costs
- Community center or record storage
- Make use of what we have volunteers, donations and grants

- Better communication will let people know there is space available
- Storage (what is stored and weight a concern)
- Look for cost sharing opportunities with other local communities.
- Flea Market - What is happening in Streetsboro is profitable.
- Main floor for Township offices everything else a plus never meant to make money

There were many great ideas expressed, most revolving around communication, volunteerism and donations. There appears to be a community spirit to work together. Some suggest that maybe surrounding communities or agencies should be approached about using the space and sharing the costs. Business ideas like storage, flea markets, antiques shows or shops may be relatively easy to make happen without a lot of extra expense and could be studied further.

Mantua-Shalersville Chamber of Commerce Meeting November 20, 2013

The intent of this meeting was to generate input just from the local area businesses and see if we could find some potential interest in the school. We received 15 completed surveys from those who attended the Chamber event.

The survey listed 11 of the uses identified at the Community Meeting in October and asked participants to rank them in order of desirability. The results are listed by score, with 1 being most desirable and 5 being least desirable.

1) Non-Profit	1.33
2) Community Youth/Senior Center	1.40
3) Township offices	1.47
4) Place for Special Events	1.85
5) Business Incubator	1.92
6) Child Day Care	1.92
7) Place for Child/Adult classes	2.17
8) Office Space	2.58
9) Sheriff's Office	2.62
10) Museum	3.15
11) Retail	3.62

What other uses would really help the Mantua –Shalersville area?

Responses (in no order):

Emergency Shelter

Light Industrial

Meeting Place For adults and kids
A Mediterranean or Chinese restaurant
Community Dinner or Meeting Place
Gym Rentals
Meeting Hall of all kinds i.e., Township Trustees Association

Do you have any recommendations on how to best use the space?

Responses (in no order):

Township Offices
Incubator for small businesses
Government Center for the sheriff, like a break room
Senior Center
Non-Profit
Township Offices/ Community Center
Basketball, Volleyball
Storage

Should the School be saved?

Yes 14 93%
No 1 7%

Should the School be saved even if it were subsidized?

Yes 14 93%
No 1 7%

The results were not surprising as they were similar from what we had seen at the community meeting. This in turn led to a request to send an email to only Mantua-Shalersville Chamber members. It was observed that there may have been a handful of non-chamber members there who were given a survey to fill out. The concern was raised that this survey may not have truly represented the chamber members' feelings or input on the subject.

Online Chamber/Community Survey

As a result of the concerns over the chamber survey not being unbiased, RPC prepared the identical survey that was distributed on November 20th. There was a delay in getting the survey redistributed out to the Chamber and finally RPC began to receive responses on February 10th. However a newspaper article inadvertently disclosed the link to the survey and we ended up with 167 survey responses. Because this number far exceeded the 15 surveys we received at the November 20th Chamber meeting we have to conclude this is a community survey, and not representative of Chamber members.

The survey results are listed in order of most desirable to least desirable:

1) Township Offices	2.30
2) Place for Special Events	2.33
3) Community Center Youth/Senior Center	2.34
4) Place for Child/Adult classes	2.53
5) Child Day Care	2.54
6) Non-Profit	2.56
7) Office Space	2.62
8) Sheriff's Office	2.63
9) Museum	2.89
10) Business Incubator	2.95
11) Retail	3.40

What other uses would really help the Mantua –Shalersville area?

Responses (in no order):

- Community Gardens
- Emergency Shelter
- Farmer's Market
- Flea market
- Consignment Shop
- Library
- Light Industrial
- Meeting Place For adults and kids
- Artisan Shops
- Bingo
- Gym Rentals
- Retail

Do you have any recommendations on how to best use the space?

Responses (in no order):

- Township Offices
- A place for sports leagues, basketball and volley ball
- Multi-purpose gym
- Satellite Office for the Sheriff
- Incubator for small businesses
- Charter School
- Historical Society
- Museum
- Community Education Classes
- Emergency Shelter
- Library
- Grocery Store
- Non-Profit
- Township Offices/ Community Center
- Storage

Should the School be saved?

Yes 98 75.4%

No 32 24.6%

Should the School be saved even if it were subsidized?

Yes 89 68.5%

No 41 31.5%

Results of both surveys are found in Appendices 2 and 3.

The Chamber survey, which is one tenth the size of the community survey, had some noticeable differences. These differences are evident in the choices of which uses were most desirable. Non-profits were the most preferred in the Chamber survey but then dropped to sixth in the community survey and the business incubator was fifth in the Chamber survey but plummeted to tenth in the community survey.

The comments between the two surveys also varied when discussing the type of uses that would also be beneficial with some variations on a theme. The community survey included comments to sell, tear

down or not spend any more money on the building. Reviewing appendix 3 would be helpful to see the comments that were provided.

In the community survey when asked should the school be saved, three fourths said yes. When asked again in the community survey whether it should even if subsidized, the numbers slightly decreased but remained above a two thirds favorable consideration.

Area Realtors

For consistency we contacted the Shalersville Township Trustees to let us know their experience with owning and operating a repurposed school. Their experience for the most part was positive as they were able to rent the school to a day care and the Portage County School District for students with disciplinary problems. They also rented out the gymnasium for special events, dance classes and a local church group. The day care and school were **paying \$10 per square foot** which seemed to cover the operating expenses and helped to pay off the building.

However, the day care choose to move to a new location after being at the school for several years and the classes for Portage County also ceased when additional student relation problems occurred causing the school district to relocate as well.

Now Shalersville is also looking for tenants, and are presently charging the Church approximately \$250-\$300 a month; which works out to **\$4.50 per square foot**. The concern is they need to find another tenant soon before maintenance costs catch up with the lower revenues they are receiving.

We also spoke with a land owner from Mantua Village. They are currently renting and trying to rent office space at **\$8.50-\$9.00 per square foot**. The demand is not overwhelming at this time as they have vacant office space.

The RPC office also rents office space in our building. There are three offices, with two of them going unrented for 8 years and a major drain on our resources. The lack of use also resulted in some costly renovations which the RPC could not afford. Overtime the RPC was able to work with a new business and agency to locate in those offices by providing an allowance to fix and update those units to a more contemporary status. They received reduced rent because they were taking on a project that needed special care. Both the new business and the new agency assumed the utilities immediately and once their allowance was used up we began to collect rent again and have offices that are very marketable going forward.

Non-Profit Interest

The RPC spoke with Family and Community Services about the possibility of using one or several of the class room spaces at the Mantua Center School. Family and Community Services is probably one of the largest non-profit organizations in Portage County handling a wide range of social and community services. They are interested in locating an office in the Mantua area and believe they have at least 3 community service programs that would do well in Mantua Township. They would be interested in using one classroom and if things worked out well then they may take on more spaces, but first they would have to work up to the need for additional spaces. Starting off would be more about making sure the need was there to support them being there.

Entrepreneurial Schools

RPC also spoke with representatives from Hiram College. They are currently working in Ravenna with a project and on their campus with potential incubators. They would be interested in the space for a low rate as they do not pay rent for the building that is being used in Ravenna. In speaking with Ravenna City representatives they are concerned that not enough is happening with their space. They would like to see Hiram College take a more active role in promoting the space and to date that has not happened.

RPC would recommend that before a business incubator can occur, a relationship between Hiram College or Kent State University and the Township Trustees needs to be established with clear expectations identified.

Grants and Funding Opportunities

There are a variety of grants that will not help with providing rent but may help with renovations costs and in turn help to attract tenants. The following is a list of potential grants.

Community Development Block Grants (CDBG) – They can be used to serve low to moderate income (LMI) communities, groups or individuals. Mantua Township is not LMI community as a whole, but CDBG monies could be used to build a handicap ramp for accessibility or a related project which would help seniors access the building. As an example the Portage County Commissioners use CDBG monies to fund the Portage County Senior Center in Ravenna.

Local Government Innovation Fund (LGIF) – there are both grants and loans available that result in collaboration and or cost sharing. The loans are designed to be paid back via the cost savings that is being realized from whatever improvement was funded.

Storm Water Implementation Fund (SWIF) grants - SWIF grants can be used as demonstration projects for water quality treatment. An example would be to use pavers or permeable asphalt on some or all the parking area. The amount of the grant is limited to \$150,000. The RPC received a grant to partially pave our parking lot and create a bio-swale; which resulted in a combination paving/beautification project.

Historic Preservation grants – There are grants for historic preservation. We have not looked into likelihood of the School receiving a grant but would encourage the Township to investigate further, or the RPC could add that to our responsibilities to serve the Township.

Private Foundations – There are private foundation grants. These grants however are typically tied to a specific area and may have strict requirements for restoration versus a rehabilitation.

Private Donations and In-Kind Labor- There maybe opportunities to raise funding through community members who wish to do a fund drive, donations of all or part of the materials needed to do the rehabilitation, or volunteer labor. This could be a fun and exciting community project which everyone could share in pulling it together.

Other Issues

Cost of rehabilitation and Improvements to the building and site – There are several issues related to maintenance and upkeep to the site. That cost analysis or needs assessment was not part of this study and should done to understand the budgeting needs and determining how to set rental fees. The number of units rented will determine what the Township may be responsible for.

Not-for-Profit vs For Profit – Our understanding that until the debt service is paid off that no “for profit” businesses can be renters. That will obviously limit who the renters can be until November 2014. There may also be a property tax issue depending on who the renters are and how that is determined by the County Auditor’s office.

Zoning – The Building and property is in an R1 and R3 residential zoning classifications. Schools and government properties are typically conditional uses, but when we start adding in daycare, social service offices or offices not meant for government use then there may be a zoning issue. RPC would recommend evaluating extending the “B” or “C-1” Commercial district to include the school property along with other property that may be appropriate for commercial use in this area, see map 3.

Observations

The following two tables are observations we have made. The first table being “Users and Uses Table generalize but breaks down the type of potential users and matches them with the type of uses that maybe appropriate for the Building.

Users and Uses

Potential Users	Potential Uses
Non- or Not-for-Profit	Variety of social and community service programs; Family and Community Services; County Agencies; Medical etc.
Government	Township Offices; Sheriff Substation; Fire Department; Maybe jointly run shared cost with a neighboring Township(s) or City
Private Sector	Offices; Artisan Shops; Business Incubator; Gym; Day Care; Flea Market; Food Hub; Farmer’s Market
Community	Community Consignment Shop for residents to sell their crafts; Youth and senior community center; Adult Classes; A variety of sports leagues; Churches; Special events; Museum
No One	Remain Vacant; Sold; Demolished

The next table “Range of Opportunities” matches up different cost options with considerations as well as generalized ‘pros’ and ‘cons’.

Range of Opportunities

Costs	Considerations	Pros	Cons
Low to No Cost	Volunteers; Grants – no match; Sponsors; Implement Levy (if approved)	Very little impact to township budget to coordinate or organize; Volunteers and sponsors have a positive community image and inspire community pride	Very difficult to get grants; volunteers and sponsors that are capable to complete the needed work may be difficult; Levy may not be approved
Some Costs	Grants –with some match requirement; minor repairs \$50k or less, Selling the School; Tenant Allowance for repairs (rent offset by repairs, but utilities are being paid); Levy (put on ballot)	All of these option would include some cost to the Township	Very difficult to get grants; Selling the school lose control of the site and use or fate of the school; A levy may or may not be approved and may further the divisiveness of this issue in the community.
Moderate Costs	Grants with 50%+ match; Moderate repairs \$50k-\$100k	Grants would at least cover some of the costs, Spending \$50K to \$100K should make most of the building habitable	Grants are difficult to get and only cover half the cost, Spending \$50-\$100k may not completely finish the building and still leave it somewhat desirable
High Costs	Major Renovations; Demolition	Either the building is completely restored or it is gone.	Still need tenants to cover cost of utilities and future maintenance for sustainability; or if demolished lose all the money ever spent on the building; a building on the National Register of Historic Places and a community landmark and potential asset is lost forever

Conclusion:

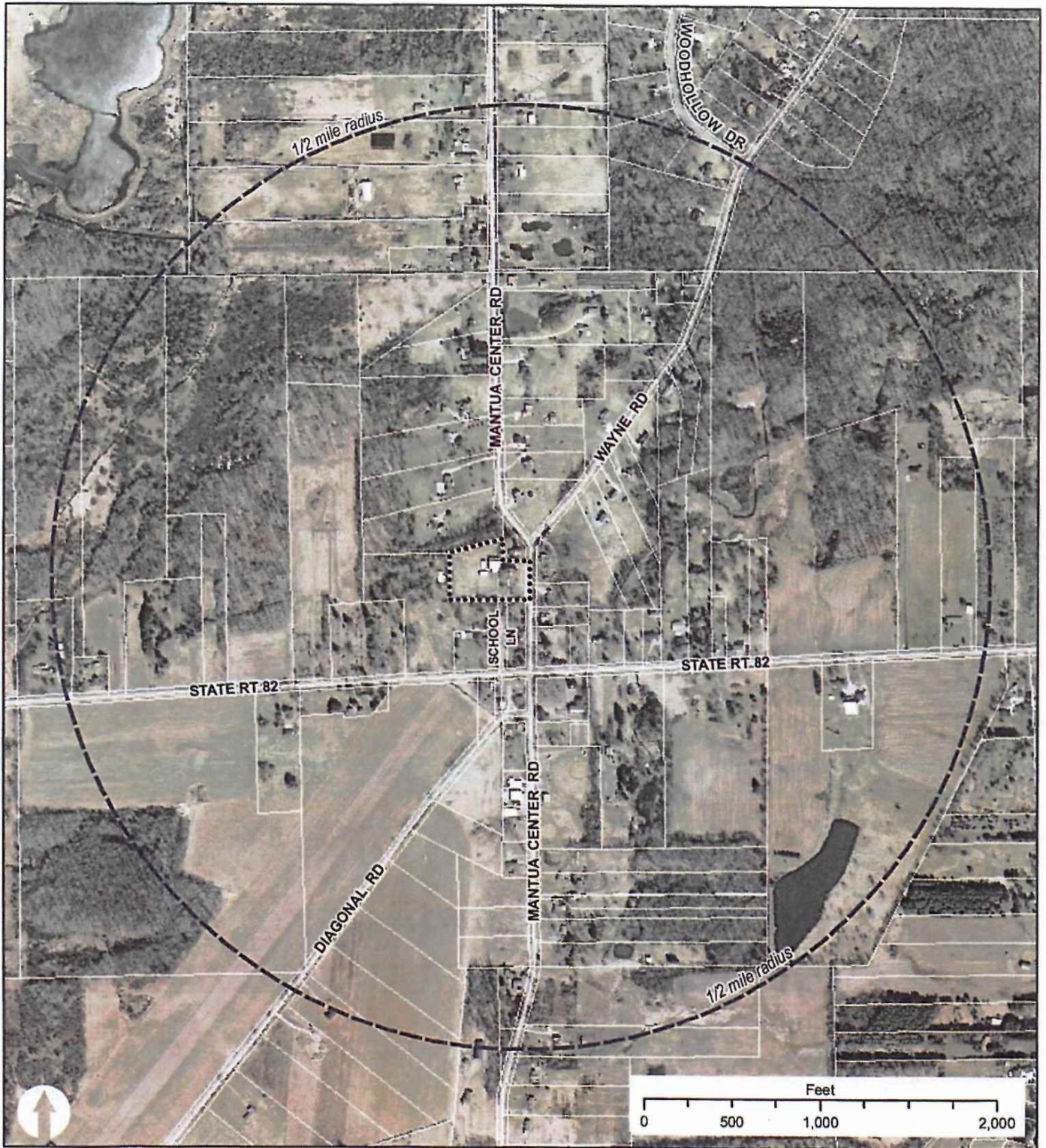
The school building sitting mostly vacant is not serving the community and costing the Township valuable financial resources. Unquestionably this has become a divisive issue in the community. As a long-time landmark of the community and being listed on the National Register of Historic Places the restoration of the school building should be and still can be a rallying point in the community. Before taking the drastic steps of selling off the building and or demolishing it. RPC recommends the Trustees establish volunteer committees with the goal of fully restoring and utilizing the school with an eye to sustainability of the facility including future maintenance costs. **These committees should include a needs assessment committee, a grant and/or foundation committee, volunteers and sponsors committee and a building utilization committee.** We would recommend the committees be formed using as many people who wish to participate in the process. The various committees should be coordinated and report back to the Trustees of their progress or programming as necessary. The Trustees could set November as a major reporting mile stone or the end of this year. If at that time the conclusion is that funds and resources are not being raised in the community then proceed with a levy to cover the shortfall and to provide for the longevity of the school facility.

We believe this approach will empower the community to largely be involved in bringing the school up to current standards and full utilization.

A quick fix, if necessary for financial reasons would be to go to the levy format. The Township could still implement the committees and realistically the Township will need to be as flexible as possible if it wants to bring in tenants sooner than later.

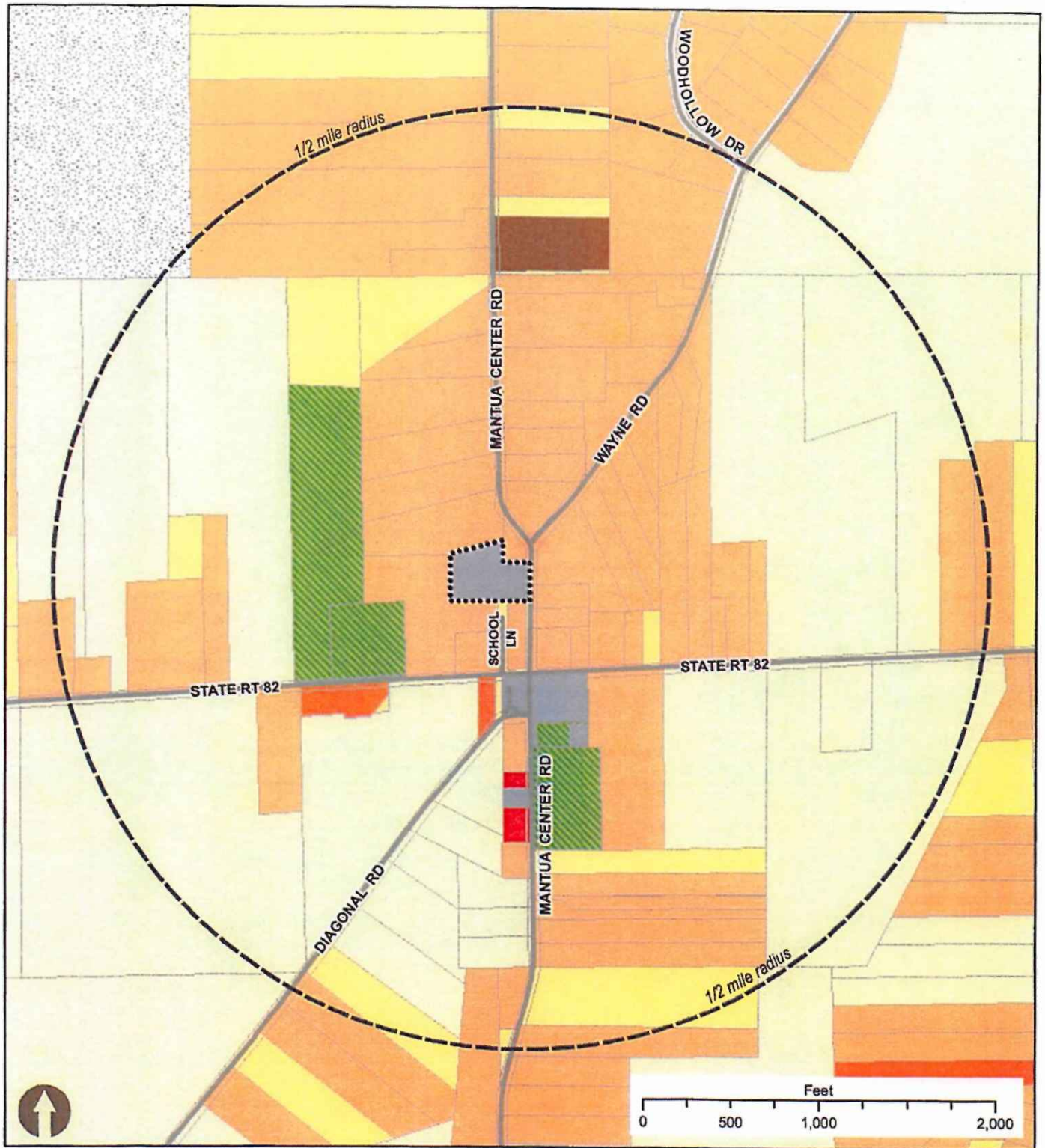
There are really a number of different routes the Township Trustees could go with their decision making, understanding that funds are limited and costs continue to be realized without supporting revenue. RPC believes a multi-pronged approach as described may be what is necessary to renovate the building and proactively find tenants and fully engage the community.

Maps 1, 2 and 3



Mantua Center School





Existing Land Use near Mantua Center School

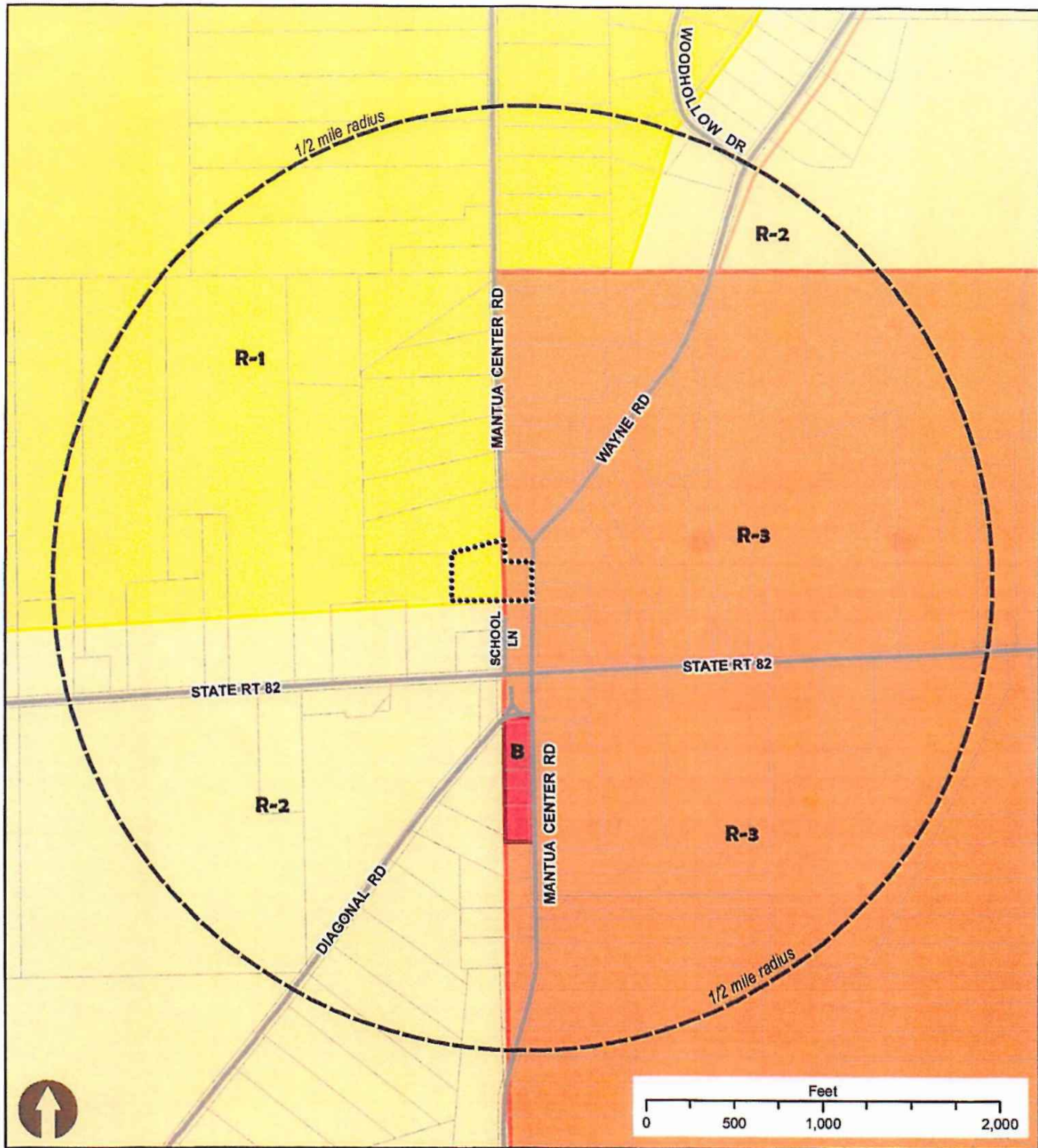
- | | | | |
|---------------------------|-------------------|----------------------|-----------------------|
| Vacant residential | Other residential | Civic, Institutional | Cemetery |
| Single family residential | Condominiums | Campground | Residential preserved |
| Two-family residential | Commercial | Landfill | Farmland |
| Three-family residential | Industrial | Extraction | |

2









Sources: Roads, parcels, Portage County GIS, Jan. 2014
 Land use, Portage County Auditor land use classification, 2013.

Prepared February 19, 2014



Zoning near Mantua Center School

3

- | | |
|---|---|
|  R-1, Low density residential |  C-1, Commercial |
|  R-2, Medium density residential |  LRM, Light restricted manufacturing |
|  R-3, Higher density residential |  I-1, Industrial |

Sources: Roads, parcels, Portage County GIS, Jan. 2014
 Zoning, Mantua Township zoning map, 1990 (amended 2001, 2008, 2011).



Appendices 1, 2 and 3



Mantua Center School

Should Be	Suggested	Voted
Township Offices	33	33
Civic Center	36	22
Torn Down	4	7
Senior Center	10	6
Sheriff's Office	3	3
Kids Center	6	1
Day Care	5	1
Education	3	1
Garage Service	2	1
Banquets	2	1
Wi-Fi	1	1
Business Incubator	1	1
Township Owned	1	1
Rental Units	9	0
Emergency Shelter	6	0
Historical/Museum	5	0
Offices	4	0
Open Gym	4	0
Cafeteria	2	0
Library	2	0
School	2	0
Crafts	1	0
Health Screening	1	0
Voting	1	0

Should Not Be	Suggested	Voted
Torn Down	17	33
Sold	13	27
A Levy (taxes to support)	5	5
Residential	4	1
Divisive Issue	3	1
Day Care	2	1
County Offices	1	1
Remain Vacant	10	0
Non-Profit	1	0
Low Rent Housing	1	0
Income Source	1	0
Hospital/Doctor	1	0
Not Sold Cheap	1	0

2

A.

Township Offices	3 5 1 1 1 1 1 2 1 1 1 1 1 1 1	22 1.47
Sheriff's Office	5 4 1 1 1 3 2 5 2 2 1 2 2 3	34 2.62
Community Center Youth/Senior	1 5 1 1 1 1 2 2 1 1 1 1 1 1 1	21 1.40
Non-Profit (community Services)	1 5 1 1 1 1 1 1 1 1 1 1 1 2 1	20 1.33
Office Space	3 4 1 1 1 2 2 3 4 4 1 4 1	31 2.58
Business Incubator	3 1 3 1 1 2 1 2 3 1 4 1 2	25 1.92
Child Day Care	2 4 1 1 1 2 2 1 1 2 1 3 3 1	25 1.92
Place for Adult/Child classes	2 5 1 1 1 2 2 1 3 3 1 2 2	26 2.17
Retail (general)	2 4 1 4 3 4 3 3 5 5 1 5 2 5	47 3.62
Museum or other Community project	4 5 1 4 1 3 3 2 2 5 5 2 2 2	41 3.15
Place for Special Events	2 5 1 1 3 1 2 1 2 1 1 2 1 1	24 1.85

Write-in
Library

- B.
- Emergency Shelter
 - Light Industrial
 - Meeting Place for Adults and Kids
 - A restaurant mediterranean or chinese
 - Meetings/ Community Dinner
 - Gym Rental
 - Meetings of all kinds -Township Trustees Association

- C.
- Township Offices
 - Incubator - Small new businesses
 - Government Center Sheriff break room
 - Senior Center - non-profit rental space
 - Non-profit (IRS implications otherwise)
 - Township offices/Community Center
 - Basketball, Volleyball - Storage

D.
Yes (with no other info provided)

E.

Center School Should be saved	1 1 1 1 1 1 1 1 1 1 1 1 2 1 1	14 1
Even if subsidized	1 1 1 1 1 1 1 1 1 1 1 1 2 1 1	14 1

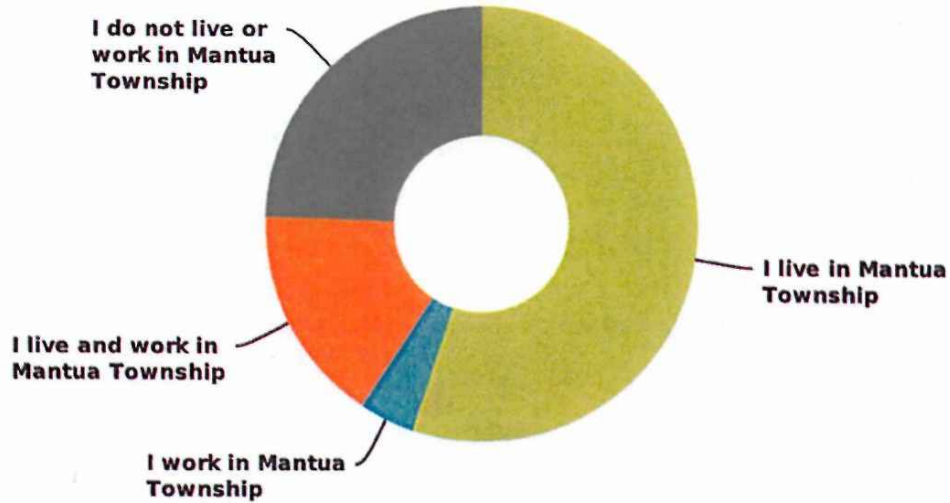
1 = yes 2 = no

- F. Other
- Mechanical is horrible 20+ years old
 - No Air conditioning

3

Q1 The Following Set of Questions are regarding the potential use Center School in Mantua. Do you live or work in Mantua Township

Answered: 167 Skipped: 0

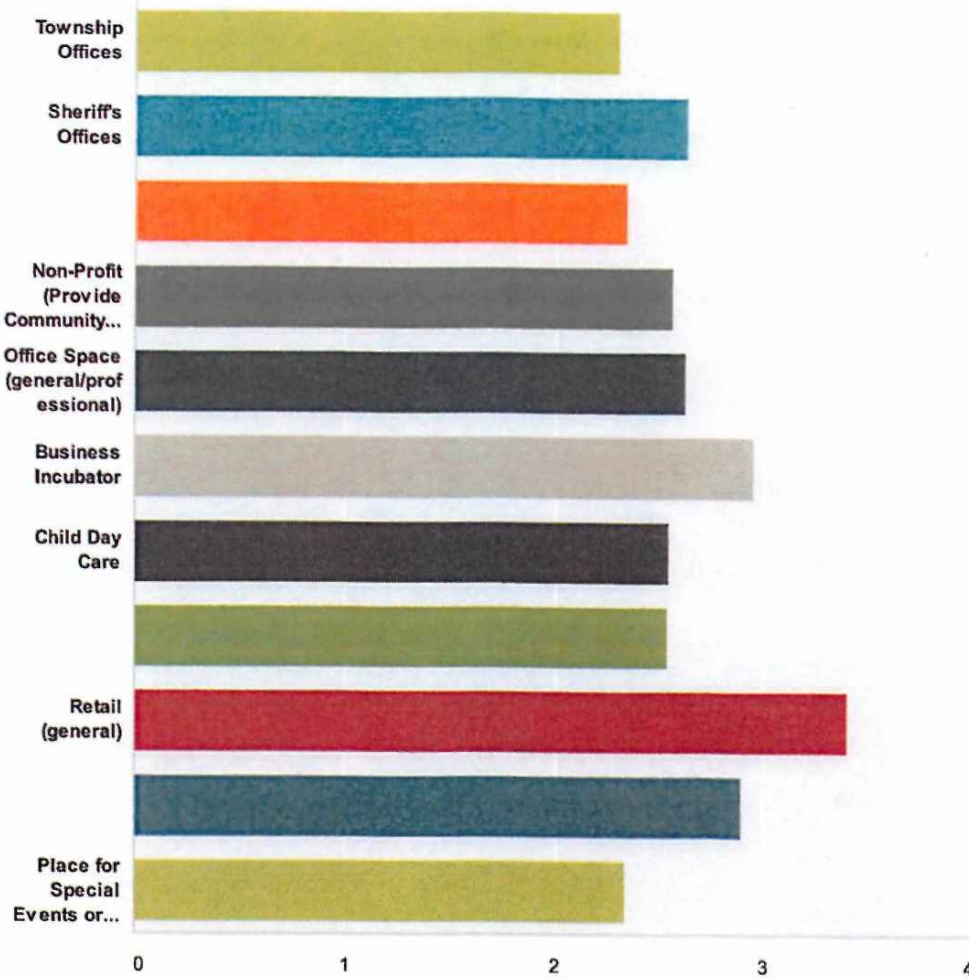


Answer Choices	Responses	
I live in Mantua Township	55.09%	92
I work in Mantua Township	4.19%	7
I live and work in Mantua Township	16.17%	27
I do not live or work in Mantua Township	24.55%	41
Total		167

Mantua-Shalersville Chamber of Commerce Member's Survey

Q2 On a rating of One (1) to five (5), 1 being extremely supportive and a 5 being extremely unsupportive; how would you rate the following potential uses for the school?

Answered: 125 Skipped: 42



	(no label)	(no label)	(no label)	(no label)	(no label)	Total	Average Rating
Township Offices	54.10% 66	9.84% 12	10.66% 13	3.28% 4	22.13% 27	122	2.30
Sheriff's Offices	37.50% 45	17.50% 21	14.17% 17	5.83% 7	25% 30	120	2.63
Community Center (Youth/Senior)	54.84% 68	10.48% 13	6.45% 8	2.42% 3	25.81% 32	124	2.34
Non-Profit (Provide Community Services)	41.67% 50	18.33% 22	10% 12	2.50% 3	27.50% 33	120	2.56

Office Space (general/professional)	34.75%	19.49%	15.25%	10.17%	20.34%		
-------------------------------------	--------	--------	--------	--------	--------	--	--

Mantua-Shalersville Chamber of Commerce Member's Survey

Office Space (general/professional)	2010 %	2011 %	2012 %	2013 %	2014 %		
OFFICE SPACE (GENERAL)	41	23	18	12	24	118	2.62
Business Incubator	28.70%	16.67%	15.74%	8.33%	30.56%		
	31	18	17	9	33	108	2.95
Child Day Care	41.03%	15.38%	14.53%	6.84%	22.22%		
	48	18	17	8	26	117	2.54
Place for Adult/Child Classes	40.68%	17.80%	11.02%	8.47%	22.03%		
	48	21	13	10	26	118	2.53
Retail (general)	20.72%	7.21%	19.82%	16.22%	36.04%		
	23	8	22	18	40	111	3.40
Museums or other Community (non-profit)	35%	9.17%	15.83%	11.67%	28.33%		
	42	11	19	14	34	120	2.89
Place for Special Events or Banquets	53.33%	10%	10%	4.17%	22.50%		
	64	12	12	5	27	120	2.33

Mantua-Shalersville Chamber of Commerce Member's Survey

Q3 What other uses/activities would really help the Mantua-Shalersville area?

Answered: 133 Skipped: 34

#	Responses	Date
1	I donot feel that we should be completeling a survey until we know what the cost would be to renovate the school to be able to use it for township offices, business, sheriff, day care etc.	2/20/2014 8:31 AM
2	community garden, art activities	2/19/2014 5:19 PM
3	get rid of vic grimm and all his cronies	2/19/2014 8:40 AM
4	emergency shelter	2/18/2014 7:11 PM
5	Not sure	2/18/2014 5:00 PM
6	don't know	2/18/2014 4:43 PM
7	None	2/18/2014 3:28 PM
8	None	2/18/2014 2:28 PM
9	None	2/18/2014 9:41 AM
10	space torent for special event	2/17/2014 1:27 PM
11	Disaster Shelter	2/17/2014 1:10 PM
12	A community center, something with a gym, or basketball, art classes, cooking classes, youth programs. The type of things that make a community, instead of having to drive out of town to do anything interesting with your family.	2/17/2014 9:19 AM
13	The large open classrooms would give the Mantua Historical Society space to organize and catalog records as well as provide computer access and reading/coping documents for researchers	2/17/2014 9:00 AM
14	Actually, it should be the Crestwood Area	2/16/2014 5:56 PM
15	Before/after school programs	2/16/2014 11:02 AM
16	Businesses	2/16/2014 8:59 AM
17	New bldg	2/16/2014 8:23 AM
18	use of gymnasium for Crestwood sports teams/organizations	2/16/2014 12:52 AM
19	Indoor Swimming pool would be nice.(Free to residents)	2/15/2014 8:07 PM
20	pre school & after school care for working parents	2/15/2014 7:22 PM
21	Emergency Shelter; Township Mtg's; Home Owner Assoc Mtg; Voting; Rallies & Fund Raisers; Rental for Business Mtgs; AA and 'like' mtgs; Education Tutoring; Community gatherngs e.g. Seniors, youth, young adult	2/15/2014 2:22 PM
22	exercise center	2/15/2014 2:03 PM
23	Developing our outdoor recreational potential for hiking, biking, kayaking, etc. so that the Village would be a gathering spot, thereby promoting some commercial development, hosting some activities which showcase the Mantua Township Green and historic buildings and homes, festivals which attract crowds for a short window of time,	2/15/2014 11:55 AM
24	Rental of the Annex	2/15/2014 11:42 AM
25	Mantua Township Farmers' Market; annual rummage sale. Community potluck/community building activities	2/15/2014 11:04 AM
26	just general , average price doesnt have to be sky high in the price to rent it for a couple of hours. but a non member of the township trustess should be in charge	2/15/2014 9:42 AM
27	none	2/15/2014 9:17 AM

Mantua-Shalersville Chamber of Commerce Member's Survey

28	Better spending of our tax dollars	2/15/2014 9:08 AM
29	have a craft shows park and recreation center for the kids basketball	2/15/2014 12:31 AM
30	n/a	2/14/2014 10:43 PM
31	fleamarket	2/14/2014 7:01 PM
32	A community pool/rec center	2/14/2014 6:20 PM
33	no ideas	2/14/2014 5:38 PM
34	Visitor/tourism information office	2/14/2014 4:56 PM
35	SET UP AS AVAILABLE EMERGENCY CENTER	2/14/2014 4:35 PM
36	The School being tom Down	2/14/2014 4:28 PM
37	recreation center, exercise gym	2/14/2014 4:06 PM
38	senior citizen group--possible bus trips	2/14/2014 2:38 PM
39	EXExercise center art center, library, computer center	2/14/2014 2:35 PM
40	Open for basketball and vollyball etc.	2/14/2014 2:13 PM
41	NONE	2/14/2014 12:27 PM
42	Youth center, emergency evacuation center	2/14/2014 12:13 PM
43	possible satalite station for fire dept	2/14/2014 11:44 AM
44	a Library	2/14/2014 11:33 AM
45	senior center	2/14/2014 10:40 AM
46	Just getting income out of the building seems critical. I don't care about the use type that much. The lower level is already set up for day are, so that seems natural.	2/14/2014 10:19 AM
47	museum	2/14/2014 10:17 AM
48	Mantua Historical Society museum	2/14/2014 9:48 AM
49	A few jobs would be nice. Maybe David Joyce should get off his large posterior and get the federal government to open up an office in the school, and hire local people to do government work of some kind. Government work has to be done somewhere, and goodness knows that both parties in Washington have done everything possible to destroy the industrial midwest through trade policy (or lack thereof). I think they owe it to us and it would be cheap. Speaking of large posterior's maybe David Joyce could create a sort of super dream team-up with his fellow Republican Matt Lynch - they could put their great brains together!	2/14/2014 9:34 AM
50	health clinic	2/14/2014 8:27 AM
51	NONE	2/14/2014 8:17 AM
52	scouts meeting place/training	2/14/2014 8:05 AM
53	A place to showcase Township Small Businesses	2/14/2014 7:44 AM
54	Community activities	2/14/2014 7:31 AM
55	more community, local state and federal help in keeping empty store fronts in Mantue full again	2/14/2014 6:21 AM
56	We cannot afford this building. We are not Aurora or Hudson.	2/13/2014 11:51 PM
57	Can't think of any others	2/13/2014 10:17 PM
58	I like the idea for a place for the youth to go	2/13/2014 10:14 PM
59	n/a	2/13/2014 9:53 PM
60	Community education and rec dept.	2/13/2014 9:38 PM
61	Conserve tax money. Get rid of the money pit	2/13/2014 9:37 PM
62	Recreation and parks, play ground, building rentable for gatherings like the village has but a little bigger	2/13/2014 9:35 PM

Mantua-Shalersville Chamber of Commerce Member's Survey

63	none	2/13/2014 9:18 PM
64	no suggestions	2/13/2014 9:05 PM
65	Unknown	2/13/2014 8:53 PM
66	More people interested in working to benefit the community	2/13/2014 8:27 PM
67	Meeting place for civic groups	2/13/2014 8:21 PM
68	none	2/13/2014 8:17 PM
69	Possible space to be able to store and give away household goods for people in need.	2/13/2014 8:17 PM
70	bingo	2/13/2014 8:01 PM
71	na	2/13/2014 7:57 PM
72	The way it is is fine	2/13/2014 7:54 PM
73	A community center that would encourage people to spend time together.	2/13/2014 7:51 PM
74	artists/art studio/coffee or perhaps cafe	2/13/2014 7:49 PM
76	1	2/13/2014 7:46 PM
76	Somewhere for youth to go to keep them out of trouble	2/13/2014 7:29 PM
77	Tutoring for students/arts	2/13/2014 7:29 PM
78	CONSIGMENT SHOP	2/13/2014 7:27 PM
79	None known	2/13/2014 7:27 PM
80	assist CCC's with storage of food, walking (like mall walking up and down the different levels of the school)	2/13/2014 6:55 PM
81	record storage	2/13/2014 6:54 PM
82	I like the idea someone proposed at the meeting about the fire department using it.	2/13/2014 4:02 PM
83	COMMUNITY DISASTER SHELTER LOCATION	2/13/2014 3:36 PM
84	Disaster shelter area	2/13/2014 3:22 PM
85	Shalersville is struggling with this as well. Sell the building!!	2/13/2014 12:48 PM
86	-	2/13/2014 11:55 AM
87	Emergency Shelter	2/13/2014 11:35 AM
88	Exercise	2/13/2014 10:45 AM
89	shelter	2/13/2014 10:39 AM
90	This has no use and is a money pit	2/13/2014 9:31 AM
91	Free space for small groups (Scouts, etc.) to meet	2/13/2014 9:09 AM
92	Knock it down	2/13/2014 7:23 AM
93	none	2/13/2014 7:19 AM
94	Library	2/13/2014 6:43 AM
95	anything to keep teens active and away from drugs	2/13/2014 6:24 AM
96	Sell the old school and recoup our money	2/13/2014 6:01 AM
97	A real Community Center...Nice gym...work out area	2/12/2014 3:18 PM
98	Right now conserve money and energy and get this potential mill stone off of our cost basis.	2/12/2014 12:03 PM
99	No opinion	2/12/2014 9:31 AM
100	Community disaster shelter	2/11/2014 4:56 PM
101	Co-Op center/ Child care and or adult care	2/11/2014 4:48 PM

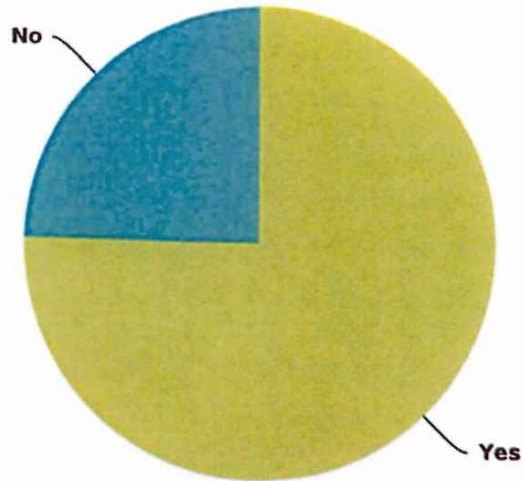
Mantua-Shalersville Chamber of Commerce Member's Survey

102	tutoring credwood students who need it	2/11/2014 3:57 PM
103	Library branch, internet cafe	2/11/2014 3:08 PM
104	senior center	2/11/2014 2:58 PM
105	Secretarial, Copying, Printing, Shipping Services	2/11/2014 12:50 PM
106	Connect the building with the bike and hike trails with port-a-potties and water station	2/11/2014 12:44 PM
107	river activities like Garrettsville does	2/11/2014 11:58 AM
108	Retail	2/11/2014 10:31 AM
109	cant think of any other ones	2/11/2014 9:36 AM
110	Inexpensive rental for small events.	2/11/2014 9:30 AM
111	?	2/11/2014 9:22 AM
112	VERY light industrial (packing, assembly); rentals w/guaranteed monthly income to support upkeep	2/11/2014 9:14 AM
113	Stop spending tax dollars on this building	2/11/2014 8:51 AM
114	farmer's market	2/11/2014 8:32 AM
115	Assisted living housing for elderly and people W/special need	2/11/2014 8:27 AM
116	none	2/11/2014 8:11 AM
117	Mantua is dying. Store fronts closing. No one wants to invest in Mantua.	2/11/2014 7:57 AM
118	Grocery store chain like giant eagle	2/11/2014 6:14 AM
119	County Health branch, latch - key programs for after - school	2/11/2014 5:33 AM
120	No suggestion	2/10/2014 9:37 PM
121	Natural medical center or day spa	2/10/2014 8:25 PM
122	After school activities and sat and sun activities for teens	2/10/2014 7:29 PM
123	None	2/10/2014 7:19 PM
124	senior or a student center	2/10/2014 7:08 PM
125	Other Government Offices	2/10/2014 5:54 PM
126	Gym for sports wrestling soccer baseball	2/10/2014 5:43 PM
127	Tear down building	2/10/2014 5:39 PM
128	basketball leagues would be a draw for gym	2/10/2014 5:30 PM
129	None	2/10/2014 5:24 PM
130	none	2/10/2014 5:20 PM
131	Its off the beaten path to draw attention of any kind.	2/10/2014 5:18 PM
132	Full service grocery	2/10/2014 5:15 PM
133	None	2/10/2014 5:07 PM

Mantua-Shalersville Chamber of Commerce Member's Survey

Q6 Should the Center School be saved

Answered: 130 Skipped: 37



Answer Choices	Responses	
Yes	75.38%	98
No	24.62%	32
Total		130

Mantua-Shalersville Chamber of Commerce Member's Survey

Q4 Do you know of people of businesses looking for space? and can we contact them? If so contact information would be greatly appreciated.

Answered: 133 Skipped: 34

#	Responses	Date
1	No, I also feel that there should be someone interested in renting office space or the like before we say what we would like. So far, all we have done is put money into the school. Even the little get togethers to share crafts, lunch etc did not become a success	2/20/2014 8:31 AM
2	no	2/19/2014 5:19 PM
3	mantua is stagnat these clowns dont want anything new	2/19/2014 8:40 AM
4	a day care yes Debbie Vogas	2/18/2014 7:11 PM
5	No	2/18/2014 5:00 PM
6	No	2/18/2014 4:43 PM
7	No	2/18/2014 3:26 PM
8	N/A	2/18/2014 2:28 PM
9	No	2/18/2014 9:41 AM
10	no	2/17/2014 1:27 PM
11	No	2/17/2014 1:10 PM
12	You need to work on your grammar.	2/17/2014 9:19 AM
13	Don't know anyone	2/17/2014 9:00 AM
14	Yes. Need more facts first, especially about how it is going to be managed..	2/18/2014 5:56 PM
15	no	2/16/2014 11:02 AM
16	No	2/16/2014 8:59 AM
17	No	2/16/2014 8:23 AM
18	I do not know of any	2/16/2014 12:52 AM
19	No	2/15/2014 8:07 PM
20	no, but will keep working on it	2/15/2014 7:22 PM
21	Yes, but will not share in this 'open' forum	2/15/2014 2:22 PM
22	no	2/15/2014 2:03 PM
23	Debbie Vogias waited ten years to open a preschool in the Mantua Center School basement before the project was stopped and she was rudely evicted from the storage trailers on the premises. She might still be interested. She lives in Mantua Village.	2/15/2014 11:55 AM
24	no	2/15/2014 11:42 AM
25	Ken Collier, Business Incubator, 330-289-3542	2/15/2014 11:04 AM
26	no	2/15/2014 9:42 AM
27	no	2/15/2014 9:17 AM
28	No	2/15/2014 9:08 AM
29	will talk to some business to see what i can do to help	2/15/2014 12:31 AM

Mantua-Shalersville Chamber of Commerce Member's Survey

30	why is this required and the columns above not numbers???	2/14/2014 10:43 PM
31	none i know of	2/14/2014 7:01 PM
32	No	2/14/2014 6:20 PM
33	No	2/14/2014 5:38 PM
34	Calvin Brant 330-274-2315	2/14/2014 4:56 PM
35	NO	2/14/2014 4:35 PM
36	no	2/14/2014 4:28 PM
37	no	2/14/2014 4:06 PM
38	No	2/14/2014 2:38 PM
39	no	2/14/2014 2:35 PM
40	YES	2/14/2014 2:13 PM
41	NO	2/14/2014 12:27 PM
42	No	2/14/2014 12:13 PM
43	no	2/14/2014 11:44 AM
44	no	2/14/2014 11:33 AM
45	no	2/14/2014 10:40 AM
46	No.	2/14/2014 10:19 AM
47	no	2/14/2014 10:17 AM
48	no	2/14/2014 9:48 AM
49	You're kidding, right?	2/14/2014 9:34 AM
50	not at this time	2/14/2014 8:27 AM
51	NONE	2/14/2014 8:17 AM
52	no	2/14/2014 8:05 AM
53	No	2/14/2014 7:44 AM
54	no	2/14/2014 7:31 AM
55	no	2/14/2014 6:21 AM
56	Don't know of anybody looking to rent an old school building with no A/C.	2/13/2014 11:51 PM
57	Don't know anyone who would be interested; too many issues with the building and due to the historical registration, would be too expensive to update	2/13/2014 10:17 PM
58	No	2/13/2014 10:14 PM
59	n/a	2/13/2014 9:53 PM
60	no	2/13/2014 9:38 PM
61	Not in that useless old building with no heat, air conditioning and working windows	2/13/2014 9:37 PM
62	I tried to rent my old commercial building in Chesterland for 3 years. No activity. Businesses want modern office/retail space in my opinion	2/13/2014 9:35 PM
63	no	2/13/2014 9:18 PM
64	Know no one	2/13/2014 9:05 PM
65	No	2/13/2014 8:53 PM
66	No	2/13/2014 8:27 PM
67	no	2/13/2014 8:21 PM
68	not at this time... Air Conditioning? ADA compliance? Heating concerns.	2/13/2014 8:17 PM

Mantua-Shalersville Chamber of Commerce Member's Survey

69	No	2/13/2014 8:17 PM
70	no	2/13/2014 8:01 PM
71	na	2/13/2014 7:57 PM
72	No	2/13/2014 7:54 PM
73	No.	2/13/2014 7:51 PM
74	no	2/13/2014 7:49 PM
75	2	2/13/2014 7:46 PM
76	No	2/13/2014 7:29 PM
77	No	2/13/2014 7:29 PM
78	NO	2/13/2014 7:27 PM
79	No	2/13/2014 7:27 PM
60	no	2/13/2014 6:55 PM
81	Larry Lietzow of Mantua Twp.	2/13/2014 6:54 PM
82	I don't at this time but I will keep my eyes and ears open.	2/13/2014 4:02 PM
83	NO	2/13/2014 3:36 PM
84	No	2/13/2014 3:22 PM
85	Ask Shalersville, they can't find anyone either	2/13/2014 12:48 PM
86	--	2/13/2014 11:55 AM
87	not at this time	2/13/2014 11:35 AM
88	no	2/13/2014 10:45 AM
89	no	2/13/2014 10:39 AM
90	None for this building, This has no use and is a money pit	2/13/2014 9:31 AM
91	Not at present	2/13/2014 9:09 AM
92	Scientific mold studies	2/13/2014 7:23 AM
93	yeah right they closed Alcatraz in 69	2/13/2014 7:19 AM
94	No	2/13/2014 6:43 AM
95	no	2/13/2014 6:24 AM
96	No	2/13/2014 6:01 AM
97	NO	2/12/2014 3:18 PM
98	No ..there are lots of spaces at Mantua comers that are vacant . with out sewer and water and with a dying mantua village so close there is absolutly no reason to create more business/ retail space or goverment overhead .	2/12/2014 12:03 PM
99	No	2/12/2014 9:31 AM
100	No contacts at this time.	2/11/2014 4:56 PM
101	No	2/11/2014 4:48 PM
102	no	2/11/2014 3:57 PM
103	No	2/11/2014 3:08 PM
104	no	2/11/2014 2:58 PM
105	UPS store	2/11/2014 12:50 PM
106	no	2/11/2014 12:44 PM
107	no	2/11/2014 11:58 AM

Mantua-Shalersville Chamber of Commerce Member's Survey

108	No	2/11/2014 10:31 AM
109	no	2/11/2014 9:36 AM
110	No, sorry.	2/11/2014 9:30 AM
111	?	2/11/2014 9:22 AM
112	?	2/11/2014 9:14 AM
113	There is empty business space of all sorts all over our community	2/11/2014 8:51 AM
114	no	2/11/2014 8:32 AM
115	No	2/11/2014 8:27 AM
116	no	2/11/2014 8:11 AM
117	No	2/11/2014 7:57 AM
118	Not at this time	2/11/2014 6:14 AM
119	No	2/11/2014 5:33 AM
120	No suggestion	2/10/2014 9:37 PM
121	Not currently . But want to open a natural medical enter/spa	2/10/2014 8:25 PM
122	no	2/10/2014 7:29 PM
123	None	2/10/2014 7:19 PM
124	Free Clothing Giveaway Nancy Tafel 330-569-3110	2/10/2014 7:08 PM
125	No	2/10/2014 5:54 PM
126	Russ Rennecker 330-357-7496	2/10/2014 5:43 PM
127	No	2/10/2014 5:39 PM
128	no	2/10/2014 5:30 PM
129	No	2/10/2014 5:24 PM
130	none	2/10/2014 5:20 PM
131	No one, Mantua Village is full of empty spaces	2/10/2014 5:18 PM
132	No	2/10/2014 5:15 PM
133	No	2/10/2014 5:07 PM

Mantua-Shalersville Chamber of Commerce Member's Survey

Q5 Do you have any recommendations on how to best use the space?

Answered: 133 Skipped: 34

#	Responses	Date
1	It isa beautiful historical building; however, as a senior citizen we cannot afford more taxes. With the school levy passing our taxes went up almost 250 .00 a year.	2/20/2014 8:32 AM
2	high end apartments, the gym could be the garage. absolutely save the school	2/19/2014 5:20 PM
3	tear it down	2/19/2014 8:41 AM
4	all the above	2/18/2014 7:12 PM
5	No	2/18/2014 5:00 PM
6	Not at this time	2/18/2014 4:44 PM
7	Sell it or tear it down	2/18/2014 3:27 PM
8	n/a	2/18/2014 2:28 PM
9	Sell it	2/18/2014 9:41 AM
10	space f rent for a special evnt	2/17/2014 1:28 PM
11	No	2/17/2014 1:10 PM
12	You have already asked this question, and it has been answered.	2/17/2014 9:19 AM
13	The annex is great for basketball, indoor volleyball and of course various catered events. Our consolidated voter polling location is also perfect. See Item #3 for classroom suggestion.	2/17/2014 9:06 AM
14	Yes but am reluctant to give it.	2/16/2014 5:56 PM
15	Charter school or before/after school program/courses	2/16/2014 11:02 AM
16	No	2/16/2014 8:59 AM
17	No	2/16/2014 8:23 AM
18	nothing specific; used for community	2/16/2014 12:53 AM
19	Township offices - all should be housed there and all Township meetings should be there as well.	2/15/2014 8:07 PM
20	open for group activites	2/15/2014 7:23 PM
21	Twp Gov, Education, muti purpose(Gym)	2/15/2014 2:24 PM
22	Half of the class rooms for township offices. The other half for historical society or concinment of antiqies. The gym/cafetera comminity use.	2/15/2014 2:10 PM
23	Offices for the Fiscal Officer, Zoning Boards, and Cemetery Sexton. A Community Center for Seniors and others, a preschool in the basement, office space rented to non-profits, small office for the Sheriff's deputies, gymnasium rental for parties and meetings as we are currently doing, center for artists and local craftsmen to work and display/sell/or teach classes	2/15/2014 11:59 AM
24	township offices, sheriff satellite offices, community center, meetings, banquets, emergency shelter	2/15/2014 11:48 AM
25	See the answers on the 1-5 section	2/15/2014 11:04 AM
26	we only have one bulding to rent if we would like to have a party if our yards are not big enough, rent it out, as I said in the above line.	2/15/2014 9:44 AM
27	no	2/15/2014 9:17 AM
28	No	2/15/2014 9:08 AM
29	busunesss could rent the space for their offices or a day care	2/15/2014 12:32 AM

Mantua-Shalersville Chamber of Commerce Member's Survey

30	should this not have been determined long ago?	2/14/2014 10:44 PM
31	access/egress should be one way & more parkin	2/14/2014 7:05 PM
32	If Crestwood Schools could use the gym/caferteria for sport practices or area sports teams that would be great. There is not enough gyms for all the sports in our district.	2/14/2014 6:22 PM
33	community space	2/14/2014 5:38 PM
34	Rooms are very large; divide some or all into 2,3, or 4 spaces to maximize total rental revenue.	2/14/2014 4:56 PM
35	TOWNSHIP OFFICES, AVAILABLE FOR NON-PROFIT USES	2/14/2014 4:35 PM
36	Put something new there, school has to many issues not worth the money to fix it up	2/14/2014 4:29 PM
37	improve stepwise as good viable uses are found	2/14/2014 4:09 PM
38	township or county offices or private renters	2/14/2014 2:40 PM
39	storage, tum huge rooms into smalle rones for better use of space	2/14/2014 2:38 PM
40	for general community use, We have nothing now.	2/14/2014 2:13 PM
41	NO NEEDS TO MUCH WORK	2/14/2014 12:28 PM
42	Trustee, clerk, cemetery sexton zoning office, community center day care center	2/14/2014 12:15 PM
43	twp offices,historical society,preschool,rental	2/14/2014 11:45 AM
44	community center	2/14/2014 11:33 AM
45	active senior center, exercise, trips, classes	2/14/2014 10:42 AM
46	Enough rent money to make it revenue neutral or better for the township, plus township offices.	2/14/2014 10:20 AM
47	no	2/14/2014 10:18 AM
48	museum	2/14/2014 9:49 AM
49	Govememt offices and community functions. Hiram college need a building? How about Kent State - after all, it's awash in student loan money. Why not open an "extension" while the bubble lasts?	2/14/2014 9:35 AM
50	raise community spirt	2/14/2014 8:29 AM
51	NONE	2/14/2014 8:17 AM
52	get get rid of the two trustees that want to tear it down!!!!!!!!!!!!	2/14/2014 8:06 AM
53	No	2/14/2014 7:45 AM
54	Since it has already been paid for by the community--it should be used for the community	2/14/2014 7:33 AM
55	The Sheriffs office and senior/youth center seemed to be the best of the votable ideas	2/14/2014 6:23 AM
56	Tear it down and make it a park. The decision to purchase should have been taken to the residents for a vote.	2/13/2014 11:52 PM
57	no - but to expand on my answer to #6 below - the answer is yes IF it can be saved economically, otherwise, no if it is simply too expensive to update and maintain relative to its ultimate use	2/13/2014 10:19 PM
58	For the community	2/13/2014 10:15 PM
59	Township offices/community center	2/13/2014 9:53 PM
60	Community Education classes	2/13/2014 9:39 PM
61	Sell it or get it off our tax support	2/13/2014 9:38 PM
62	I went to elementary school there and so did one of my kids. The layout and the stairs are not ideal for much of anything unfortunately.	2/13/2014 9:36 PM
63	Nothing. Never should have been purchased.	2/13/2014 9:19 PM
64	no	2/13/2014 9:05 PM
65	shelter+rentel space	2/13/2014 8:55 PM

Mantua-Shalersville Chamber of Commerce Member's Survey

66	Sheriffs North Post	2/13/2014 8:53 PM
67	Use by the township for meetings, offices and general community interests	2/13/2014 8:27 PM
68	for the benefit of the community.	2/13/2014 8:21 PM
69	not at this time	2/13/2014 8:18 PM
70	No	2/13/2014 8:18 PM
71	no	2/13/2014 8:02 PM
72	no	2/13/2014 7:57 PM
73	to much maintein need maintain what you have	2/13/2014 7:55 PM
74	Use the gym as a community center, and the upstairs classrooms as exercise rooms or places for hobby classes to be held.	2/13/2014 7:51 PM
75	no	2/13/2014 7:50 PM
76	No	2/13/2014 7:47 PM
77	No	2/13/2014 7:29 PM
78	Arts center/music lessons and other arts	2/13/2014 7:29 PM
79	No	2/13/2014 7:28 PM
80	TEAR IT DOWN	2/13/2014 7:27 PM
81	See my answer #3	2/13/2014 7:05 PM
82	Library, rec center, fitness center	2/13/2014 6:58 PM
83	I have no new ideas other than ones already mentioned.	2/13/2014 4:03 PM
84	SEE ABOVE ANSWERS	2/13/2014 3:36 PM
85	See above	2/13/2014 3:24 PM
86	Sell it, it's a major tax burden	2/13/2014 12:49 PM
87	No	2/13/2014 11:55 AM
88	work w/volunteers to reno so big can be more widely used	2/13/2014 11:36 AM
89	Not right now	2/13/2014 10:45 AM
90	Tear it down.	2/13/2014 9:31 AM
91	Township offices, Community Center and rental space	2/13/2014 9:11 AM
92	Demolition stop waiting money	2/13/2014 7:24 AM
93	landfill	2/13/2014 7:20 AM
94	Library	2/13/2014 6:43 AM
95	I love the old building and history and the Gym is nice but I am concerned with the costs involved with saving the school. Would it be more financially sound to demolish and rebuild a physically sound community center with an efficient heating and cooling system?	2/13/2014 6:30 AM
96	Sell it and recoup our money	2/13/2014 6:02 AM
97	vacant lot..maybe a ball field	2/12/2014 3:19 PM
98	Put it up for sale to the private sector for 4 months if not sold set an auction date and sell to highest bidder with the restriction that it must be developed and utalized with in one year . if it does not sell demolish the space and put the lot up for sale .	2/12/2014 12:05 PM
99	Unfortunately it seems like a money pit in order to bring it up to code	2/12/2014 9:32 AM
100	Central bulding for government, community (young & old) Leasing space would need revamping & more time to investigate demigraphs & cost effectiveness. Lets get the community using the building more effectively first.	2/11/2014 5:03 PM

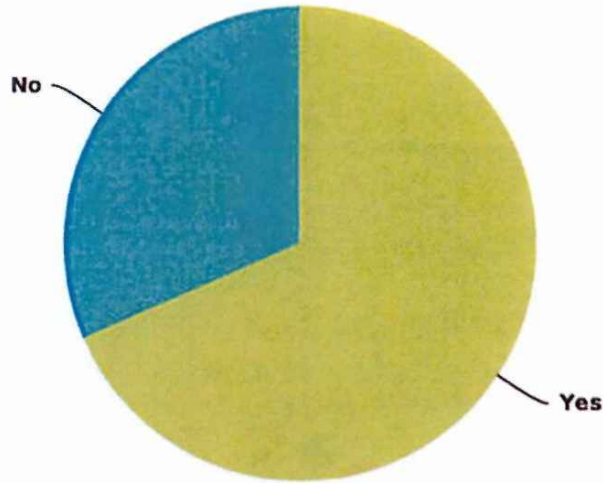
Mantua-Shalersville Chamber of Commerce Member's Survey

101	no	2/11/2014 4:49 PM
102	should be developed by private interest	2/11/2014 3:58 PM
103	Community Center, Library location, internet cafe	2/11/2014 3:09 PM
104	Generate income / rent	2/11/2014 2:59 PM
105	Library and internet hub with work out facilities	2/11/2014 12:52 PM
106	I recommend the trustees budget money to subsidize the school as they have done with the Town Hall and Civic Center. These buildings have never paid for themselves, but have been in continuous use. We do not own parks, we own historic buildings and should be proud of it!!!!	2/11/2014 12:46 PM
107	Township offices	2/11/2014 11:58 AM
108	Grocery Store	2/11/2014 10:31 AM
109	township offices	2/11/2014 9:36 AM
110	Meeting hall and events center.	2/11/2014 9:30 AM
111	?	2/11/2014 9:22 AM
112	gathering place (classes, sports) + income-producing	2/11/2014 9:15 AM
113	Bulldoze it make ball fields	2/11/2014 8:53 AM
114	no	2/11/2014 8:32 AM
115	Should be a way to lease out the gymnasium	2/11/2014 8:31 AM
116	no	2/11/2014 8:11 AM
117	Sell it. No ideas	2/11/2014 7:58 AM
118	No specific ideas at this time	2/11/2014 6:15 AM
119	Township functions and community gathering	2/11/2014 5:35 AM
120	No suggestion	2/10/2014 9:37 PM
121	No	2/10/2014 8:25 PM
122	Township offices No. 1	2/10/2014 7:29 PM
123	No	2/10/2014 7:19 PM
124	center for students and seniors	2/10/2014 7:10 PM
125	Township Use only if the the construction is done professionally	2/10/2014 5:55 PM
126	For the children	2/10/2014 5:43 PM
127	No	2/10/2014 5:40 PM
128	no	2/10/2014 5:31 PM
129	No	2/10/2014 5:24 PM
130	Office space/ public and private...medical??	2/10/2014 5:20 PM
131	Leaving it empty might be the best option.	2/10/2014 5:18 PM
132	No	2/10/2014 5:16 PM
133	No	2/10/2014 5:07 PM

Mantua-Shalersville Chamber of Commerce Member's Survey

Q7 Should Center School be saved even if it is subsidized by the Township?

Answered: 130 Skipped: 37



Answer Choices	Responses	
Yes	68.46%	89
No	31.54%	41
Total		130

Mantua-Shalersville Chamber of Commerce Member's Survey

Q8 Any Additional Comments or Suggestions?

Answered: 102 Skipped: 65

#	Responses	Date
1	I am of the opinion, that we need to have a cost to renovate the building to bring it up to code and also the septic system upgrade so we are aware of the kind of money we are talking. As I said, we, as seniors cannot afford more taxes.	2/20/2014 8:34 AM
2	tear down that money pit make grimm and hall and stelli pay back the township what they irresponsibibly spent	2/19/2014 8:42 AM
3	We need to remove a small number of people who have been trying to control the business of the township through bullying and intimidadion. Money is buying votes	2/18/2014 7:17 PM
4	Let the taxpayers decide with a survey or sell it or tear it down. Don't waste our tax doolars	2/18/2014 5:02 PM
5	No	2/18/2014 4:45 PM
6	Tear or sell this money pit	2/18/2014 3:27 PM
7	No	2/18/2014 2:28 PM
8	Sell it it is a money pit	2/18/2014 9:41 AM
9	No	2/17/2014 1:10 PM
10	My biggest concerns are similiar to what Todd expressed. The septic should be tied into the main sewer line, instead of the expensive, tank system.. It needs air conditioning and the heating system needs updated. Any use will require full accessability, which means some sort of elevator. Exterior lights to light the parking lot & building is needed. I attended that school in the 1950's and recall beautiful, polid hardwood flooring, and that should be considered for the historic restoration. The building needs a lot of repairs - I shutter when I think about the roof and coupla. Once this is done, where does the township get the money to maintain and/or repair? We keep shifting funds around to meet our necessary committments. I plan on attending the 20th meeting to hear the results of your survey.	2/17/2014 9:31 AM
11	Please, don't drive this into the ground with excessive committee meetings, dragging your feet on this until it dies due to lack of interest. George S. Patton said "A good plan violently executed now is better than a perfect plan executed next week" We have the building, make use of it. Do not let it die of neglect.	2/17/2014 9:25 AM
12	The Mantua Restoration Society and Mantua Historical Society are too involved and have a specific agenda keeping anything other than 'historical preservation' away from a building they do not own. When they say "our" building, there are 4,00+ more people in this township that are part of "our".	2/16/2014 6:00 PM
13	None	2/16/2014 8:59 AM
14	This bldg is a money pit	2/16/2014 8:23 AM
15	It is an incredible, handsome biding with a rich history. Architectureally it will never be equaled. Should definately be sabved as a part of our history and a posive use in the presentd	2/15/2014 7:24 PM
16	Must remain under Township ownership as a Community/Government Center. It is part of our twp heritage/history. Concerning the survey: In Section 2 the selection columns were not labeled 1 thru 5 so assumed 1 to be on the left and 5 to the right.	2/15/2014 2:48 PM

Mantua-Shalersville Chamber of Commerce Member's Survey

17	Center School will be paid for in Nov. 2014. The fact that it is still being subjected to these attacks is the result of a hate campaign being waged against one of the trustees, and the building was a convenient target. Financially, the township is long past the point of no return on this issue. We would need a bond issue to raise the money to tear it down, and another bond issue to build a "modern office building" which would not have the lifespan or historical significance of the current one. The chances of getting these levies passed are zero. That leaves the option of getting together a reasonable plan for remodelling that can be done in stages. The money that was used for payments can be directed to rehab and the Mantua Restoration Society can continue to raise money and look for grants, etc. The argument that this is a drain on the township's finances is ridiculous, because it is approximately 6% of our budget. If you could sell everything that the township owns, buildings, trucks, garages, etc. you might be able to pave two miles of road, one time and that's it. The Record Courier should run another front page story about how this survey was hijacked by two trustees, Dawn Pechman and Diane Smith. They are getting desperate, because the community meetings you've held have been favorable to the School being saved.	2/15/2014 12:12 PM
18	It is Historic and a Beautiful Building . It can never be REPLACED.	2/15/2014 11:50 AM
19	The school should NOT be subsidized; we can do it without a tax, which residents have consistently said they do not want. And they can't afford a tax. Question #7 is an "Are you still beating your wife?" question. The dollars freed up when the school is paid off can be used for stage by stage renovations. Stop sneering (Carlton and Festa) at the volunteers who are offering to help but who are not in Larry Leitzow's bunch. Carlton and Festa should simultaneously resign and two new trustees should be selected by a truly impartial judge, if one exists in this county and in this political climate.. Co-operate with Restoration Society and Historical Society to get grants, instead of just saying that they take time and you may not get them. Trustees-all of them, not just one-should remember that they were elected trustees, not kings. Right now, the larger interests of the township and the responsibility to be fiscally conservative are NOT being served or met	2/15/2014 11:07 AM
20	make the choice now get on with it, either save it or get rid of it its time to move on to something else is this township that has stood still for a number of years. there are other dumps the trustees should be concerned with!	2/15/2014 9:47 AM
21	awful place to vote NO PARKING 82/center rd very dangerous intersection many accidents	2/15/2014 9:21 AM
22	This bldg should never have been purchased without asking the tax payers first	2/15/2014 9:09 AM
23	do you think they could turn this into portage county library this would be great for our school and the community	2/15/2014 12:34 AM
24	none	2/14/2014 10:44 PM
25	paving /parking needs an intelligent fix	2/14/2014 7:05 PM
26	No	2/14/2014 6:22 PM
27	This building should not be destroyed	2/14/2014 5:39 PM
28	After pay-off, use \$30,000 per year for renovation. ACTUALLY SEEK GRANTS. REMOVE THE TWO TRUSTEES WHO CONSTANTLY BLOCK PROGRESS. Accept offers to volunteer genuine help. Accept help from Mantua Restoration Society. NO MORE REDUNDANT, EXPENSIVE SURVEYS/STUDIES! GET TO WORK ON IT!	2/14/2014 4:57 PM
29	RE-DO WITH NUMBERS ON THE SURVEY!	2/14/2014 4:36 PM
30	The school is a waste of Tax payers money, there is nothing you can put in that building to make it nice. I think that the school should just be tom down and maybe put a nice part in its place. I am sick and tired of hearing about this school. I went there when i was a kid and I would rather seen it tom down than saved. Its a complete waste	2/14/2014 4:30 PM
31	no	2/14/2014 4:09 PM
32	KEEP THE SCHOOL IT IS WHAT THIS TOWNSHIP WANTS. ALL ATTEMPTS TO WORK ON IT HAVE BEEN BLOCKED	2/14/2014 2:43 PM
33	Due to money already invested, we need people to rent at least part of the facility. The township can not afford to subsidize all of the school. With advertising, i would think that the gym would be easy to rent out for parties, etc.	2/14/2014 2:43 PM

Mantua-Shalersville Chamber of Commerce Member's Survey

34	Properly done, with volunteers, of which there are many, and with an eye to historic preservation, it could become the focal point of the township and environs. It should not be destroyed. Mantua Township would become the laughing stock of the county, if we aren't already. It would cost more to tear it down and replace it with a 30 year life bldg. than to restore it and have it last another 100 years. It would be false economy to tear it down. The ones who want to tear it down, also have on their agenda, to get rid of zoning. That is a fact that they have verbalized more than once. They are also trying to destroy the Historical Society, the Ladies Cemetery Assn. and other long-standing committees and groups. Add the Garden Club to that list. I could go on and on. The Center School needs to be saved and USED.	2/14/2014 2:23 PM
35	TEAR DOWN SCHOOL KEEP THE ANNEX AND MAKE OR BUILD NEW OFFICES- TAKE ALOOK AT THE TOWN HALL AND CIVIC CTR. THEY NEED WORK ON THEM	2/14/2014 12:29 PM
36	How many times and ways do we need to tell the trustees to get off their pompous duffs and move forward to get this space occupied and generating income to cover maintenance	2/14/2014 12:18 PM
37	Historic places such as this should be preserved much the same as Mantua Center green. Well built school and a gem for the area!	2/14/2014 11:46 AM
38	no	2/14/2014 10:42 AM
39	Please don't tear the building down. The thing is dam near bomb proof. Repurpose. The township pretty much paid for it already, let's stop bickering and use the dumb thing!	2/14/2014 10:21 AM
40	not at this time	2/14/2014 9:49 AM
41	Have a great day!	2/14/2014 9:35 AM
42	not at this time	2/14/2014 8:29 AM
43	KEEP THE SCHOOL!!!!!!!!!!!!	2/14/2014 8:07 AM
44	No	2/14/2014 7:45 AM
45	What is the hold up? Two of the trustees seem to have other motives for dragging their feet for using this wonderful space for the community	2/14/2014 7:33 AM
46	The township should concentrate it's efforts on improving our roads and general township maintenance, mowing, ditches, etc. This building was vacated for a reason, IT'S OLD and not economically feasible. Take some pictures and tear it down! This was a big mistake for our community that has so much potential. I think Mantua Township is a great place to live, just wish we could move forward instead of trying to save the past.	2/13/2014 11:56 PM
47	In my opinion, the building was a bad investment. I wouldn't want to work in that building or spend any leisure time there	2/13/2014 9:41 PM
48	no	2/13/2014 9:39 PM
49	Lets use our tax money to make some ball fields or parks for our community.	2/13/2014 9:38 PM
50	Enough money wasted on old sentiments. Be practical.	2/13/2014 9:20 PM
51	The first meeting in the Civic Center was well done except you should have explained the problems Shalersville had renting their building. We don't understand why you are asking the Chambers opinion, if they don't live in Mantua Twp, they should not have any say, they are not paying the bill. Will ALL the Trustees get a list of those that filled out this survey, so we can be sure. If both husband and wife are Chambers members, they should both have a vote unlike this survey!! Are you not taking non-Chambers surveys, please reply.	2/13/2014 9:06 PM
52	no	2/13/2014 9:05 PM
53	First Responder Training Center	2/13/2014 8:54 PM
54	Twp. trustees should be more considerate of township organizations like the Garden Club, LCA, MArSi, Historical Society, they are groups that have done much for the township and are being treated so bad by new trustees.	2/13/2014 8:27 PM
55	it must be saved. period.	2/13/2014 8:22 PM
56	all comments or suggestions have been brought up at public meetings.	2/13/2014 8:18 PM
57	none	2/13/2014 8:02 PM
58	no	2/13/2014 7:57 PM

Mantua-Shalersville Chamber of Commerce Member's Survey

59	We don't need it	2/13/2014 7:56 PM
60	There is a lot of chatter about tearing down this historically protected building. If this building is torn down, the land cannot be reused. Since the Township already owns the space, allow the community to take advantage of it and maybe bring together some of the people for classes and community events.	2/13/2014 7:52 PM
61	no	2/13/2014 7:50 PM
62	It is a historical landmark	2/13/2014 7:30 PM
63	No	2/13/2014 7:28 PM
64	Indoor walking track (up & down floors), indoor & outdoor farmer's market, baseball/basketball/soccer/organized sports area, child day care, Sheriff's Deputy extension office	2/13/2014 7:14 PM
65	This is another stall tactic.	2/13/2014 6:59 PM
66	Please let this little piece of history be saved.	2/13/2014 4:04 PM
67	NONE	2/13/2014 3:37 PM
68	It would be hard to rent it with all if the work it needs and all if the money it would take to make it usable	2/13/2014 12:50 PM
69	no	2/13/2014 11:55 AM
70	We must save the school. Our history is being torn down day after day and we can't let it happen here.	2/13/2014 10:46 AM
71	This has no use and is a money pit!	2/13/2014 9:32 AM
72	It's a beautiful, solid building, and should be in daily use by our community. Let's quit stalling and get on with it.	2/13/2014 9:15 AM
73	The township does not have 1 single building that in good shape don't take on another shop project	2/13/2014 7:27 AM
74	Mantua twp has already wasted 700k on this money pit	2/13/2014 7:21 AM
75	No	2/13/2014 6:44 AM
76	Decisions need to be made one way or the other before more money is put in to rehabbing the building if the end result will ultimately be demolition.	2/13/2014 6:35 AM
77	Sell the school	2/13/2014 6:02 AM
78	DO NOT LET THIS BECOME MORE OF A BURDON TO US TAX PAYERS	2/12/2014 12:06 PM
79	We should use the money saved when paying off that building to provide adequate work space for our township employees that would include indoor bathroom facilities. The fact that we are in 2014 and they have to use a porta potty outside is ridiculous.	2/12/2014 9:34 AM
80	Good Luck Please post this survey comments for the community members to review.	2/11/2014 5:05 PM
81	no	2/11/2014 2:59 PM
82	If this building is put up for sale things could get real complicated with it's use. The underlying zoning is residential and not too many buyers would resources to make use of the building. It could sit shuttered and vacant for years like all the other schools in Portage Co. Looking 15-20 years into the future this building could be the center of a vibrant, active township as more and more people move into the area. It has taken 5 years just to get to this survey. NOW WHAT? Another 5 wasted years? Five wasted years and we have come full circle and decided this would be a good community center - which had been decided in 2005! What a WASTE of time. Take that \$30,000 and get the rooms usable in a year. It is time for these three elected officials to make the decisions they were elected to make. No one said the job would be easy, but this lack of co-operation, foresight and decision making just stalls our forward growth and divides the community. It is almost like the antagonism is being enjoyed by someone at this point, which is not a very adult way to act.	2/11/2014 1:04 PM
83	"x" years free rent to anyone bringing a room up to code.	2/11/2014 12:54 PM
84	nope	2/11/2014 11:58 AM
85	Should be kept as a historical build.	2/11/2014 9:31 AM

Mantua-Shalersville Chamber of Commerce Member's Survey

86	Twp. is not needy; existing taxes can and should support protecting our heritage. School has become a symbol of hostility. Time for trustees to put aside differences & start working for the people paying for the twp. vs. protecting their egos.	2/11/2014 9:25 AM
87	no	2/11/2014 9:22 AM
88	If the historical people want to save the building that is great..they can use their money not mine	2/11/2014 8:53 AM
89	no	2/11/2014 8:31 AM
90	section 2 of this survey is unclear. Fix it so we can see which way it is set if 1-5.	2/11/2014 8:11 AM
91	No	2/11/2014 7:59 AM
92	Not at this time	2/11/2014 6:15 AM
93	No	2/11/2014 5:35 AM
94	I am neutral about whether the school should be saved.	2/10/2014 9:37 PM
95	None	2/10/2014 8:26 PM
96	no	2/10/2014 7:30 PM
97	No	2/10/2014 7:20 PM
98	no	2/10/2014 5:55 PM
99	I've only been inside building a few times. Seems like there is alot of potential. Just depends on what the investment/gain ratio is.whether or not its worth putting alot of money into to restore it.	2/10/2014 5:32 PM
100	Bad survey because bullets are not numbered...your data will be useless	2/10/2014 5:21 PM
101	Total waste of tax payors money	2/10/2014 5:18 PM
102	No	2/10/2014 5:16 PM