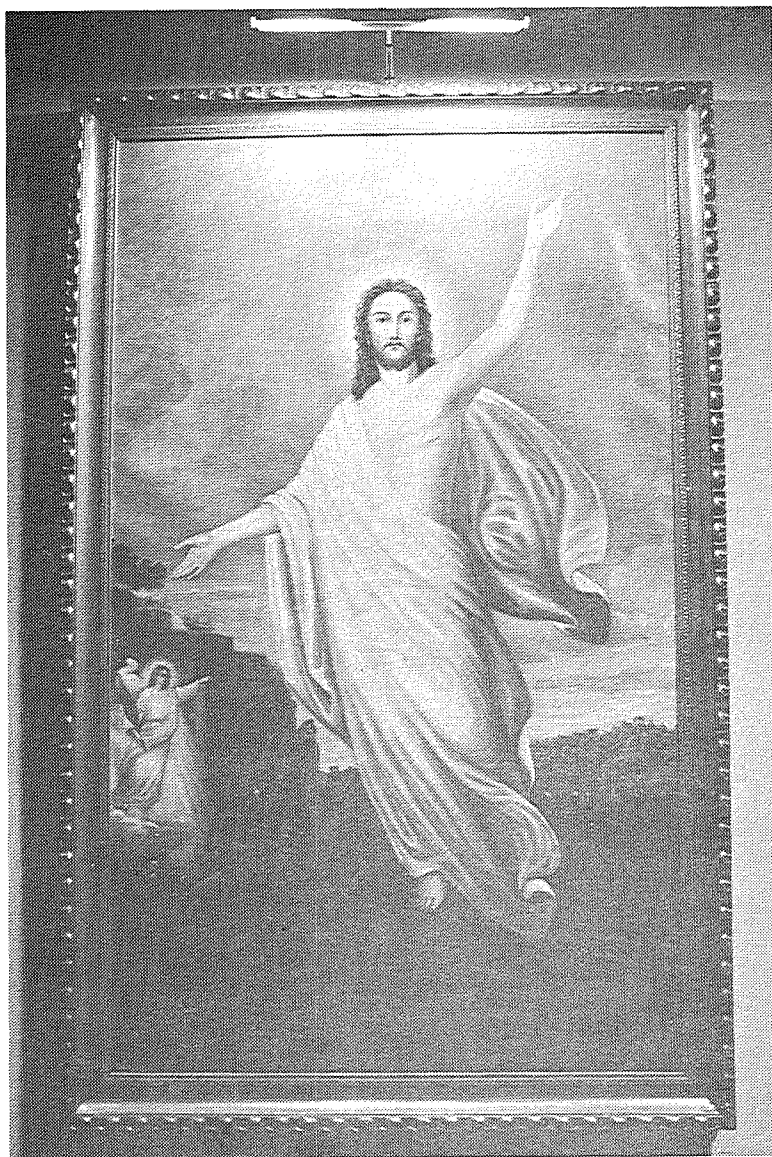


God's People
In A
Venture Of Faith

Published On The Occasion
Of The Formal Dedication

September 26, 1971

Evangelical Lutheran Church
of
Saint Michael
Richville, Michigan



*This picture from the altar of
the former Saint Michael's Church now
hangs in the Foyer of the Church*

Begun With Courage Nourished By God's Grace

One hundred twenty years ago, the foundations of today's Saint Michael's Lutheran Church were laid, when the community of Frankenhilf was formed as the fourth Lutheran Bavarian Colony in the Saginaw Valley.

A sister community to Frankenmuth, Frankentrost and Frankenlust, the early community of Frankenhilf (meaning Help of the Franconians) became known as Richville, named so by trainmen who found Frankenhilf difficult to pronounce and who were impressed by the prospering agricultural area in which they found it.

In the spring of 1850 a number of families left Germany to found the new colony. However, many in the group decided to remain in the Detroit area and others joined established Bavarian communities in the Saginaw Valley. Only two carried out original plans and settled here. They were Gottlieb Ammon and Michael Schwartz. Ministerial candidate Herman Kuehn, who led the group under the direction of Pastor William Loeh, preached the first sermon at Richville on August 17, 1850 to the two families. In June 1851 two more arrived and later Pastor J. Deindoerfer arrived with three more families. During the next two years, 15 more joined the group.

Mr. Ammon donated four acres of land and a 26x36 foot log church was built. This stood on the site of the present St. Michael's Cemetery. It was dedicated on the last Sunday of September 1853. By 1874 membership had grown to 35 families and it was decided to build a 40x75 foot church. This church was razed this past year after having served the parish for many years. It had been renovated and remodeled during the years. This second church was again dedicated on the last Sunday of September in 1875.

After Pastor Deindoerfer left, the parish was served by Pastors Sievers, Graebner, Dicke and Eisfeller. In 1862, the parish extended a call to Pastor G. Bernthal, who served the congregation for 50 years. After his retirement the parish called the Rev. William Bekemeier, who served the church from 1912 until 1937.

The Rev. William Schoenow was called in 1937 and continues to serve the parish today.

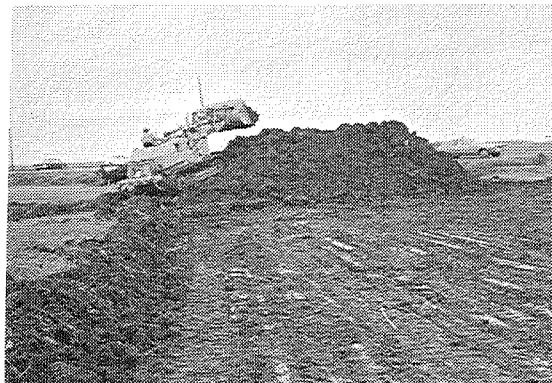
The Rev. Victor Spiekerman became the congregation's fifth resident pastor when he arrived to serve it in 1965.

During its entire history, the Congregation has been deeply concerned about Christian Education. After operating one-room district schools, a centralized school plant was constructed next to the congregational park.

Years Of Planning Lead To A Beginning



The Rev Victor Spiekerman turns the first shovelful of dirt as The Rev William Schoenow, Louis Schoenow, The Rev Hugo Ferber and Carl Hoerlein look on



Excavation for the new church was quickly begun

Thoughts of a larger church facility stirred in the hearts of St. Michael's parishioners for many years. As early as 1941 — at the 90th Anniversary of the Congregation — first steps were taken towards the ultimate building of a more adequate Church facility. That year a Sinking Fund was started with \$1,524. By 1946 it had grown to \$4,000.

But it wasn't until a Voters Meeting on December 12, 1965 that planning began in earnest. At that meeting, the Board of Elders was instructed to appoint a Planning Committee. The following March 20, after months of study, this Committee recommended that a church seating 850 be built and that a \$75,000, one-year fund raising program be embarked upon. The proposal was approved by more than a 5-1 vote.

Architects were interviewed, churches were visited and some 20 meetings were held. On January 8, 1967, the firm of Merritt, Cole & McCallum of Farmington was engaged as the architect.

At the same time, a building fund goal of \$100,000 was set for the 1967 year.

The Building Committee was elected on February 5, 1967 and a year later, on February 11, 1967, preliminary plans were accepted by the Congregation.

Two years after the Building Committee began its work, plans were submitted for bidding. The Michigan District Church Extension Fund was approved as a medium for financing through a program of ear-marked investments.

The bids were presented to the Congregation April 13, 1969 and were accepted on April 27, 1969 by a 5-1 majority.

Groundbreaking services were held in a light rain on May 18, 1969 with The Rev. Hugo Ferber of Millington, speaking in the special services.

The Cornerstone was laid at the annual "Kirkweih Fest" on September 28, 1969 with the Rev. Philip Janz of Trenton the speaker.

By early 1971, construction was nearing completion and on the afternoon of March 21, 1971, the Congregation entered the Church for the first time in a special Service of Entry. The Rev. Gordon Light, Vice-Chairman of The District Mission Board, delivered the sermon. That same morning, The Rev. William Schoenow delivered the final three sermons in the old church.

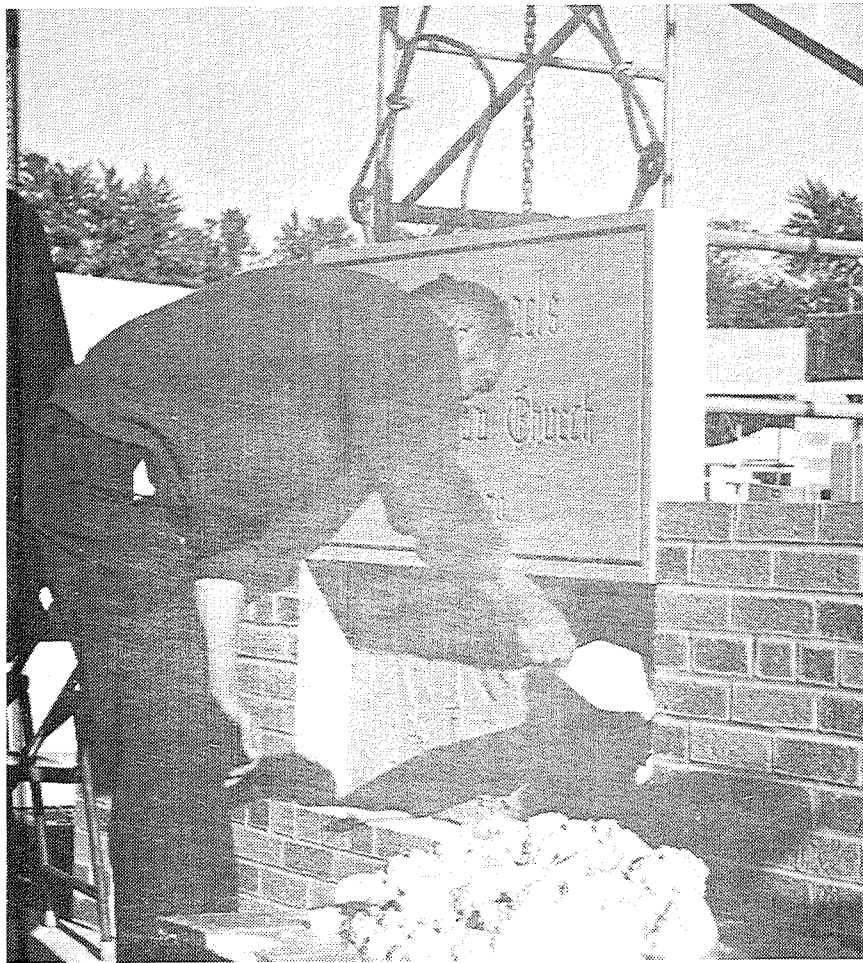
The Building Committee met some 93 times between February 13, 1967 and August 18, 1971 and nearly \$600,000 was contributed for the new church during this time.

The final furnishing, the new organ, was completed and dedicated for service on August 15, 1971.

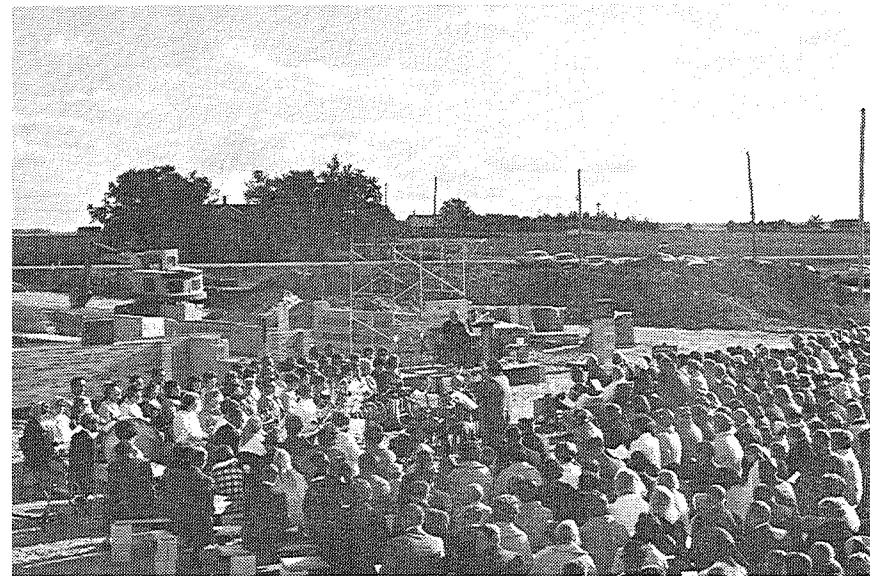
A Cornerstone

Laid With Faith and Trust

With faith and trust in God's blessing, members of St. Michael's Church gathered on Sunday, September 28, 1969, to lay the Cornerstone of their new church. The Sunday marks the Feast of St. Michael and is also the annual Kirchwei Fest (Dedication Festival) for the Congregation.



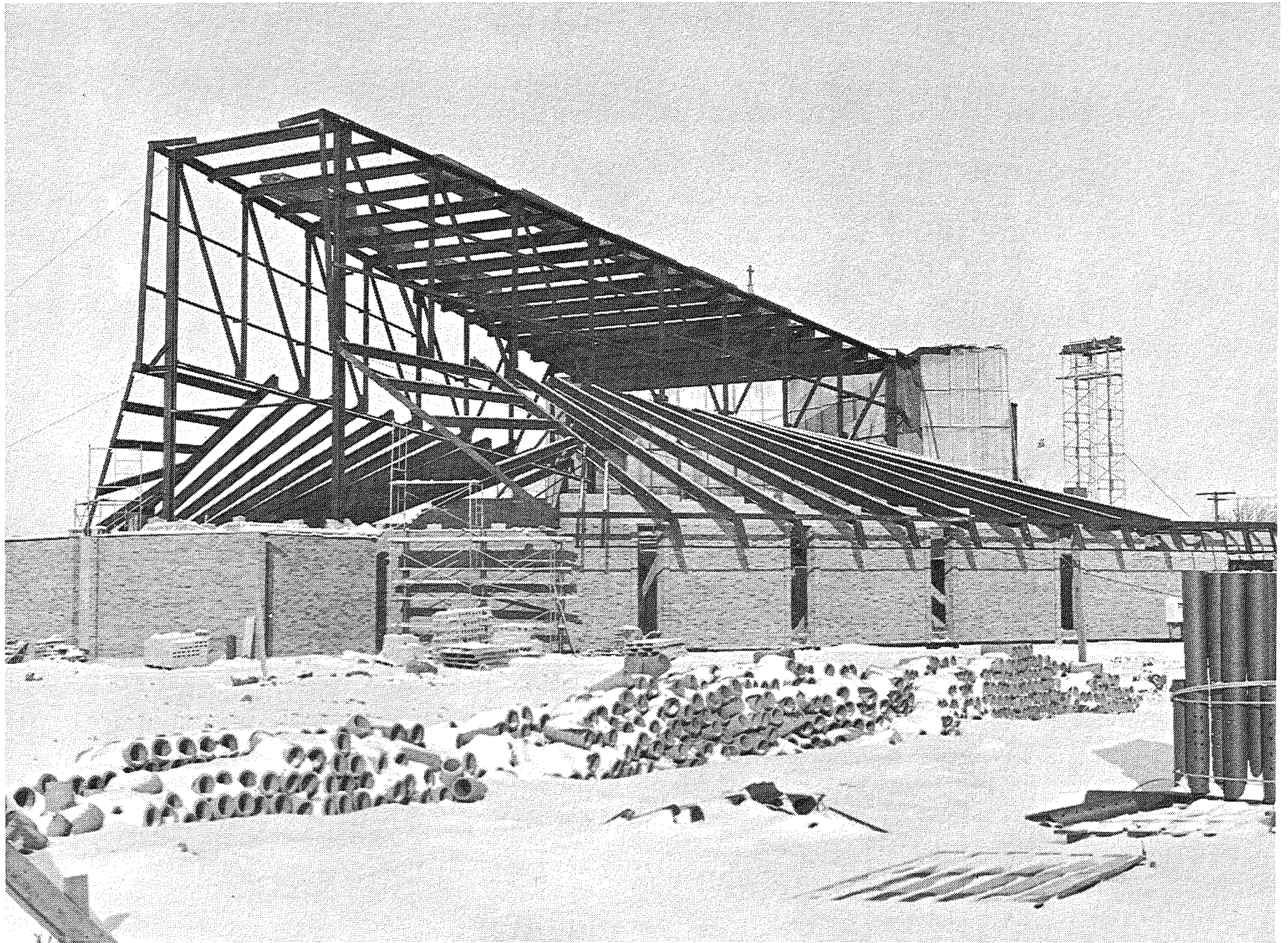
General Contractor Ronald Bronner placed the mortar for the setting of the cornerstone of the new Church



This is part of the crowd of worshippers who gathered for the outdoor services which marked the laying of the cornerstone for the new church

The Rev Philip Janz (second from right) was the speaker at the Cornerstone Laying Service held outdoors at the site of the new structure

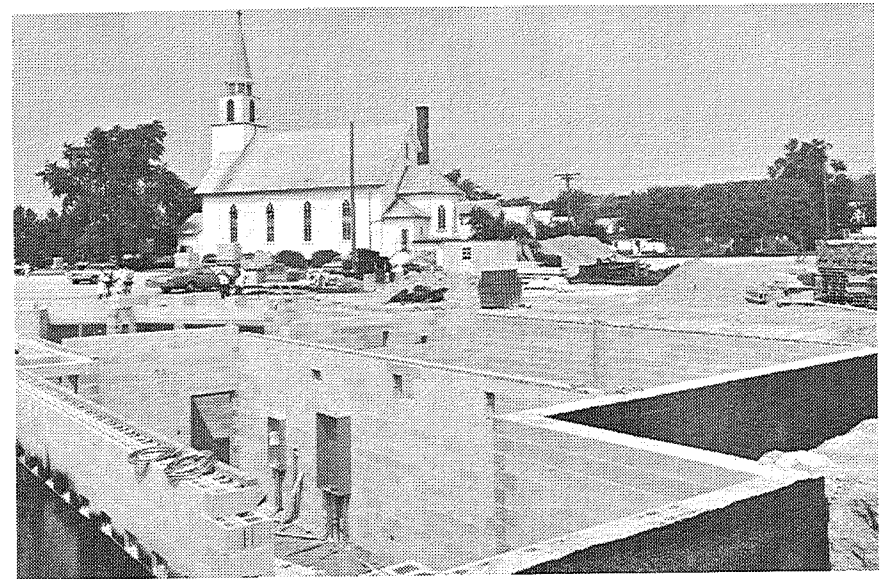




With Bricks and Beams, Plans Become A Reality



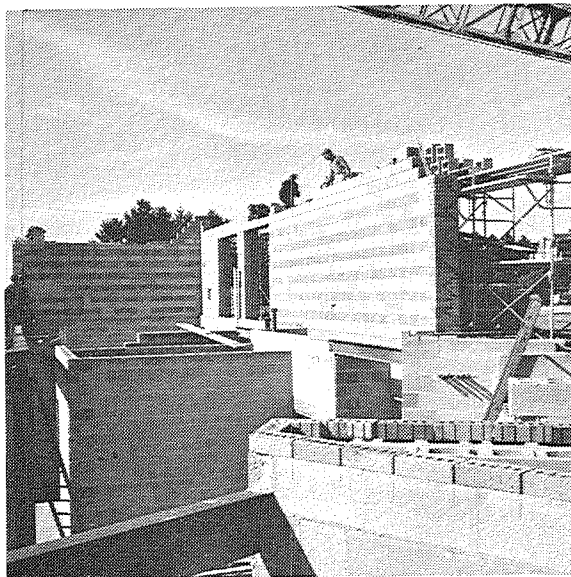
*Excavations for the lower levels
and foundations are made*



*The old church overlooks the progress of the
foundation work on the new Church*

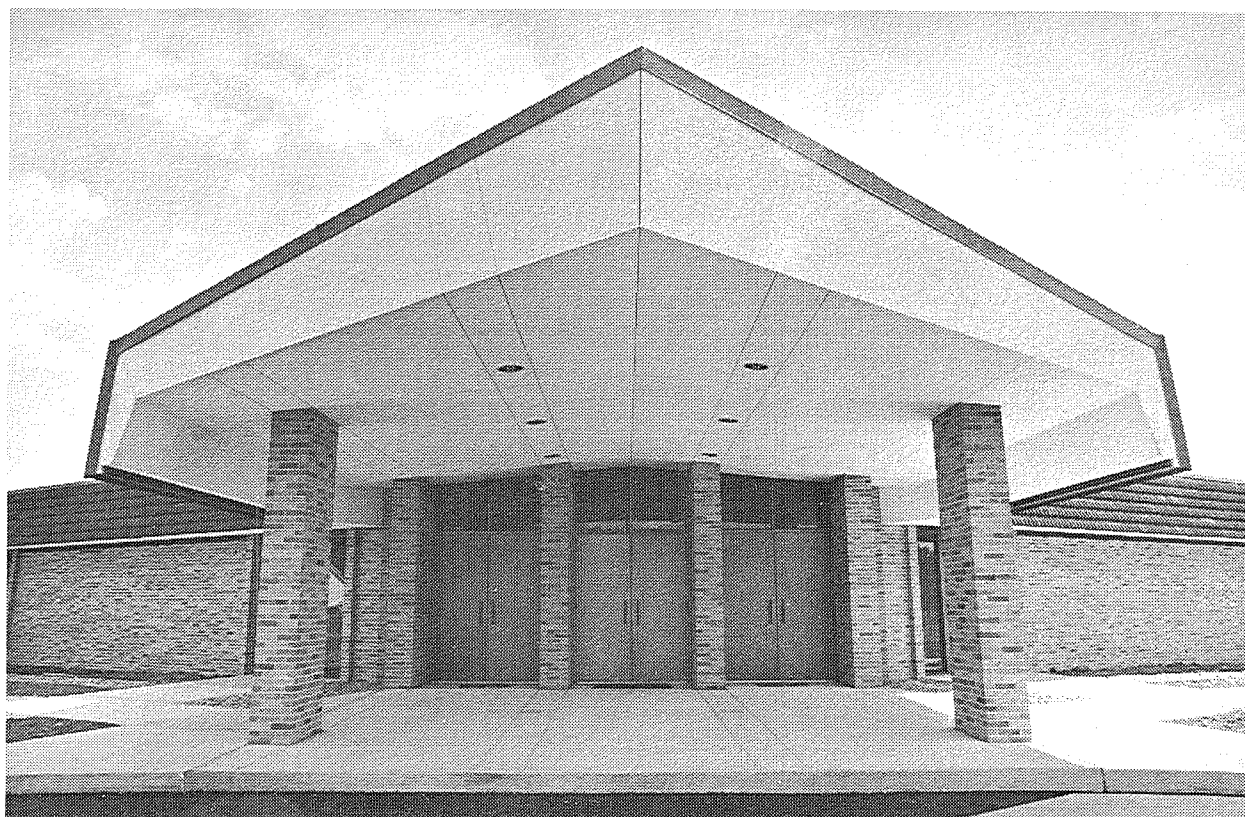
Under Skilled Hands, The New House of God Steadily Grew

*The foundations placed, brick and
block gave the church shape and form*



*As construction continued, gradually
the new building's ultimate design became evident*





Recalling A Rich Heritage —Pointing To A Challenging Future

*This is the Main Entrance
to the Saint Michael's Church*

In the building of St. Michael's Church, the planners and builders sought not only to provide more adequate space for worship and parish activities, but also to create a structure which would be in harmony with the surrounding countryside and which would stand as an architectural expression of the Congregation's faith and heritage to future generations.

As a basis for design, the concept of a Gothic clerestory was selected,

suggested by the high center portion of the Nave. To achieve facilities conducive to modern approaches to worship, the traditional rectangular-shaped Nave was spread out in a fan-shape, with all pews focusing on the Chancel.

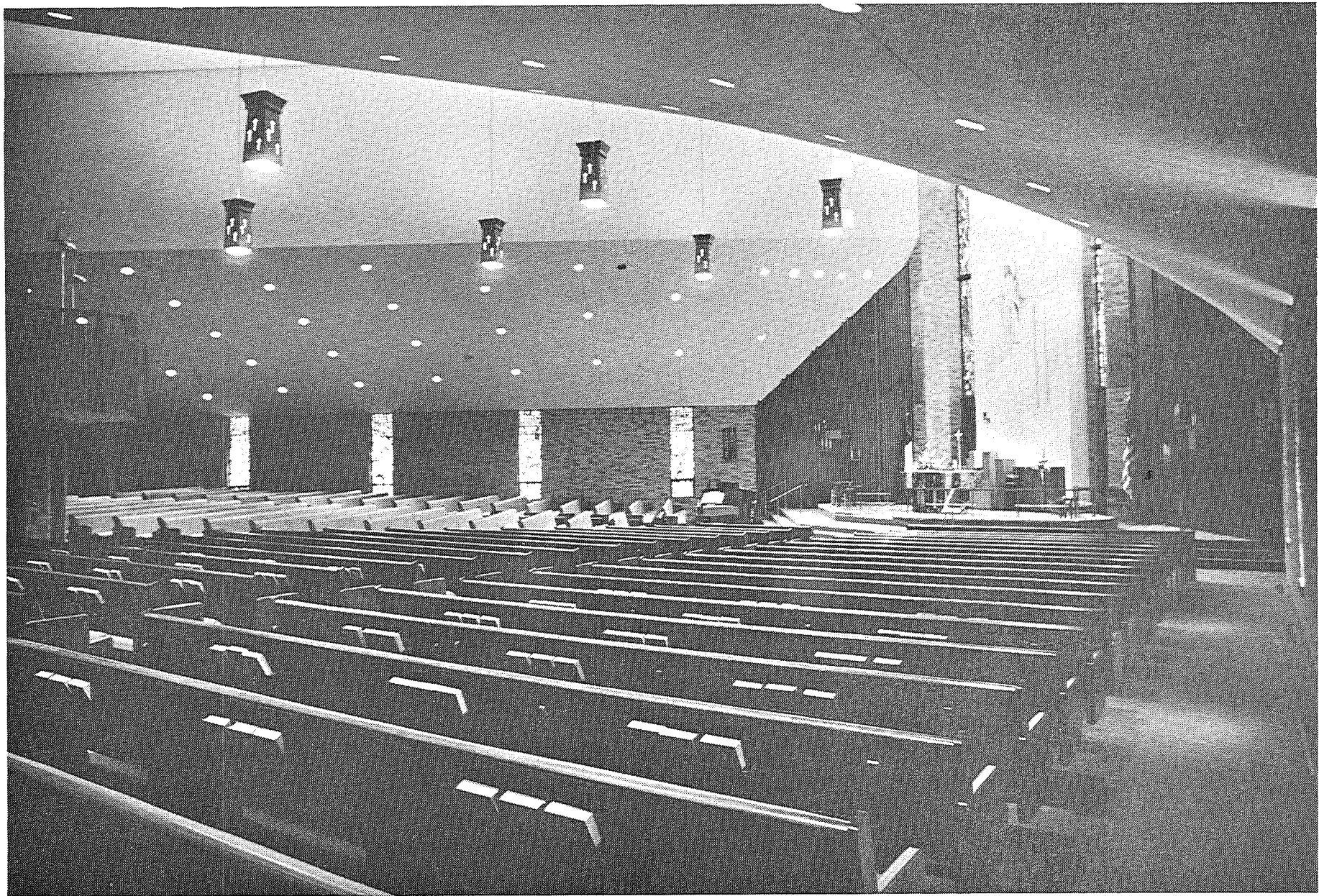
This Nave design allows some 820 worshippers to be seated "as a spiritual family about the altar" and yet allows the building to retain the majestic qualities and strength of a Gothic building.

The low, sloping roof lines relate to the flat landscape of the Richville farming community. As the low roof meets the more massive center portion of the building, it increases in pitch and the entire roof culminates in the masonry towers and slender spire.

The exterior materials of the building are of earth-toned brick and deep-weathered-brown tile shingles, both in harmony with the fertile soil of the area.

The Church has some 22,800 square feet of floor space located on two levels. Beside worship facilities, the building also features a multipurpose room which serves as a worship overflow, church offices, cry room, choir rehearsal room, kitchen, meeting rooms and spacious entranceways.

Three doors lead into the foyer from the hard-surfaced parking areas. A warm and worshipful atmosphere is created in the entrance areas and the Nave through a combination of soft colored brickwork, warm walnut paneling and extensive use of carpeting throughout the building.



Saint Michael's unique design allows worshippers to "gather around" the altar setting

A Gathering Place For God's People

Symbolizing His Real and Abiding Presence

Gathered as a spiritual family about the Altar, worshippers find their attention focused on the Chancel, dominated by a pure white reredos panel, which reaches to the ceiling and provides the background for the symbolism found in the Chancel. The reredos is flanked on both sides by windows which depict St. Michael in scenes taken from the Books of Daniel and Revelations.

Emblazoned on the reredos is a large open-design cross, fashioned in rich bronze and offset to complement the Christ figure.

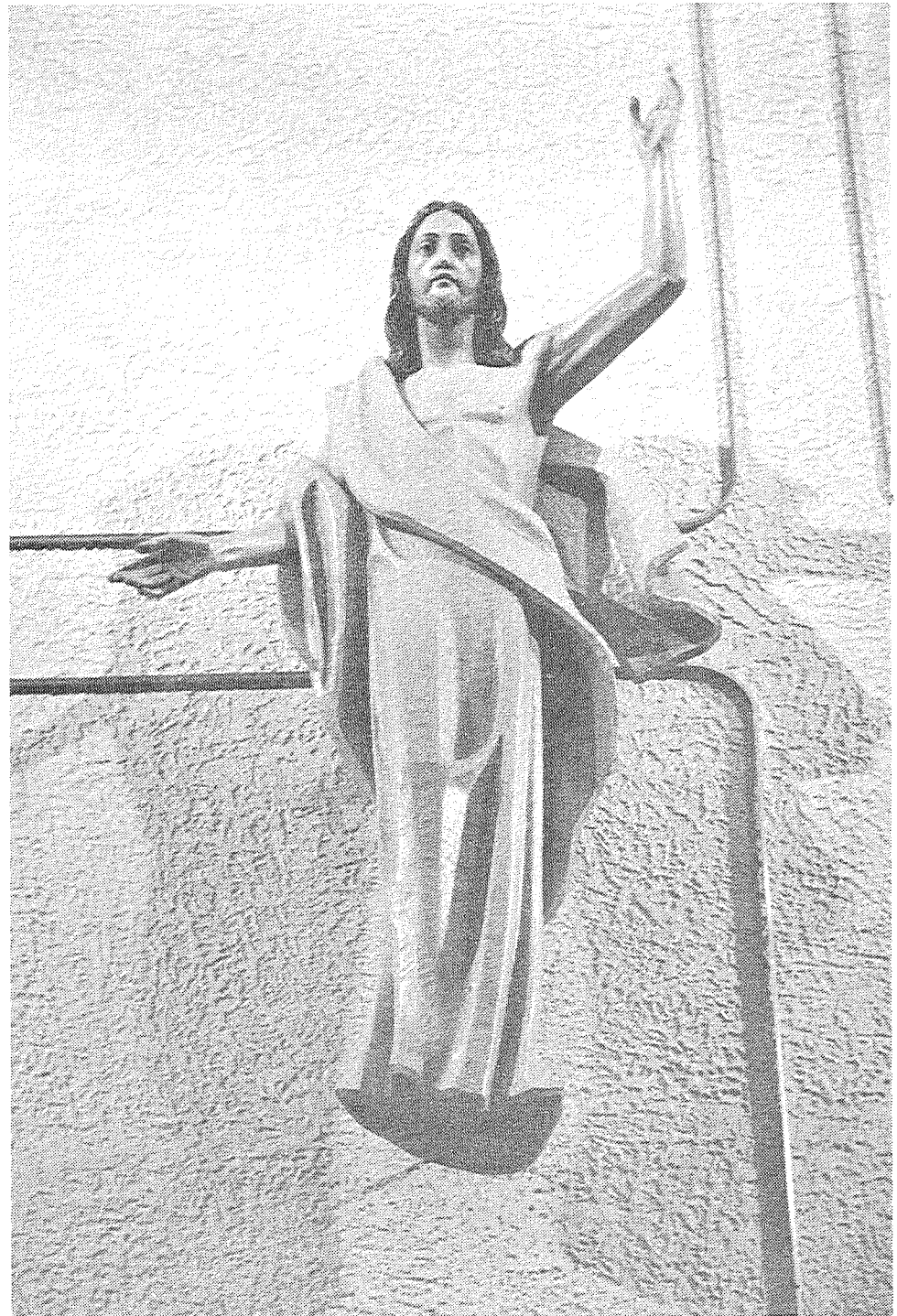
THE CHRIST FIGURE: Symbolizing His constant presence is a seven and one half foot figure of the Glorified Christ. It is constructed of hand-carved lindenwood, fabricated from a clay model developed to a likeness of the figure which appeared in the altar painting of the old church (now located in the Foyer). The stained colors of the figure were achieved by a series of wax-tint applications and hand-buffings. The figure was carved in the Studios of Conrad Moroder of Bolzano, Italy, located in the foothills of the Italian Alps.

THE ALTAR: The Altar of St. Michael's Church is of Red Levanto Marble, quarried in Pietrasanta, Italy. The table portion of the Altar is one solid block, weighing about two tons. The three supports of the table, recalling the Trinity, are of solid materials. The total weight of the Altar is 5,860 pounds. The altar is positioned to allow the officiant to lead the congregation in worship from both the front and rear.

WORD AND SACRAMENT: The theme, Word and Sacrament, is carried out in special candle-flanked panels on both sides of the Altar. These plaques are made of stained colored oak and cast bronze symbols. The left panel, carrying a cluster of grapes, a sheaf of grain and the words "I am The Life" symbolizes the Sacrament of The Lord's Supper. The right panel symbolizes the Word and features a bronze casting of a candle, open Bible and the words, "I am The Light." Seven candles appear as part of both plaque arrangements.

THE FURNISHINGS: The altarware, candlesticks, missal, processional cross and other Chancel furnishings are of solid cast bronze. The design style of the furnishings is in keeping with the style introduced in the angular lines of the supports of the Altar. A Chancel Light, which burns continuously, is also located in the areas of the altar.

THE BAPTISMAL FONT: To symbolize Baptism as the Sacrament through which entrance is gained into God's Kingdom, the



*The chancel statue recalls the figure
of Christ which for many years
graced the altar picture of the old church*

Where God and People Touch . . .

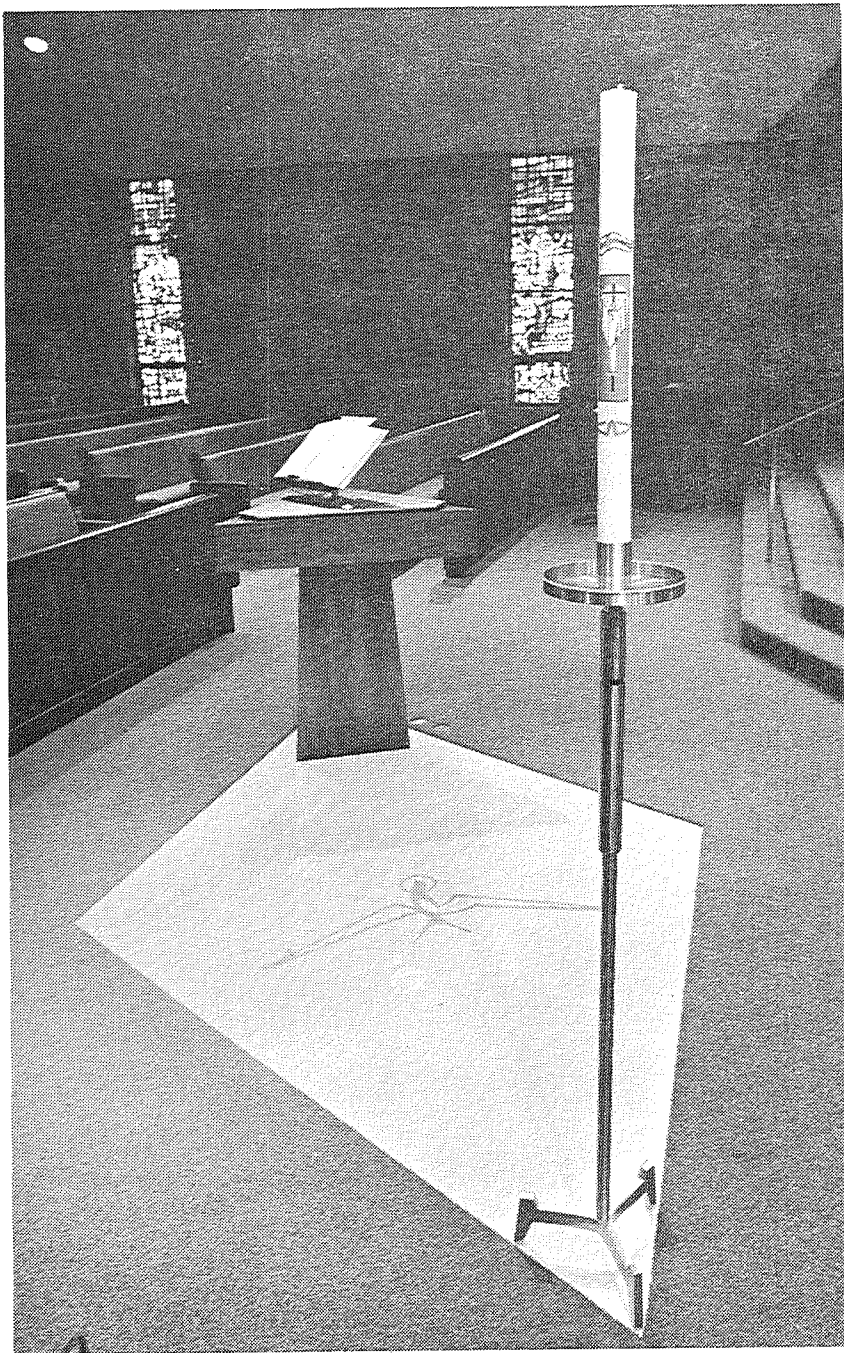
Baptistry is located at the entrance to the Chancel. The Font is of triangular design, symbolizing the Triune God. Made of walnut and bronze, it is located at one end of a diamond-shaped marble floor panel which carries the symbol of the Dove. A bronze candelabra is located at the opposite end of the marble panel.

THE PULPIT: The pulpit is located directly behind the altar and is constructed as part of the wood panels at the rear of the altar area. The entire Chancel is lighted with rheostat-controlled floodlights to allow achievement of proper worship moods

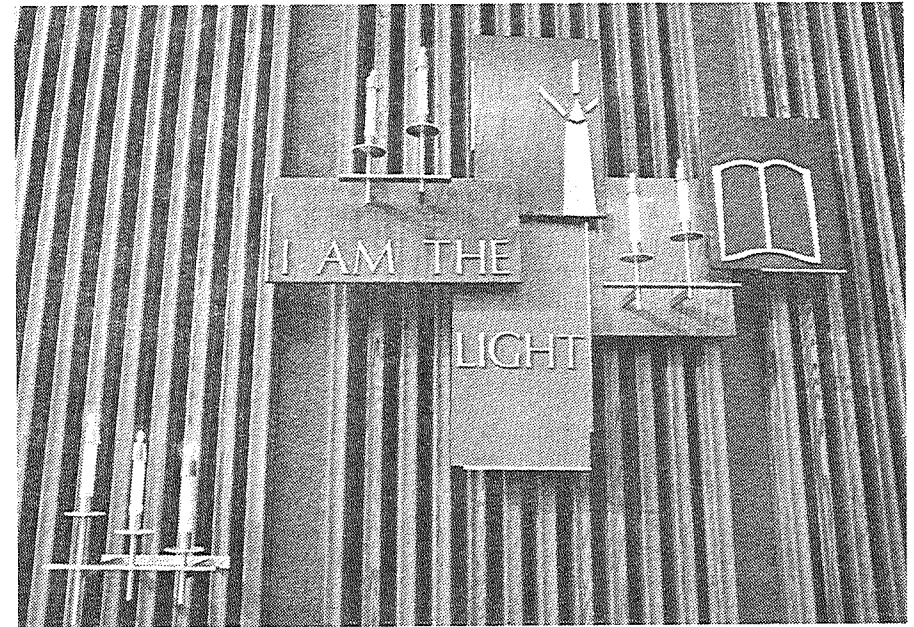
COMMUNION RAIL: A communion rail surrounds the flagstone pavement on which the Altar is situated. The rail, constructed of bronze and wood, features modern crosses in the railing design.



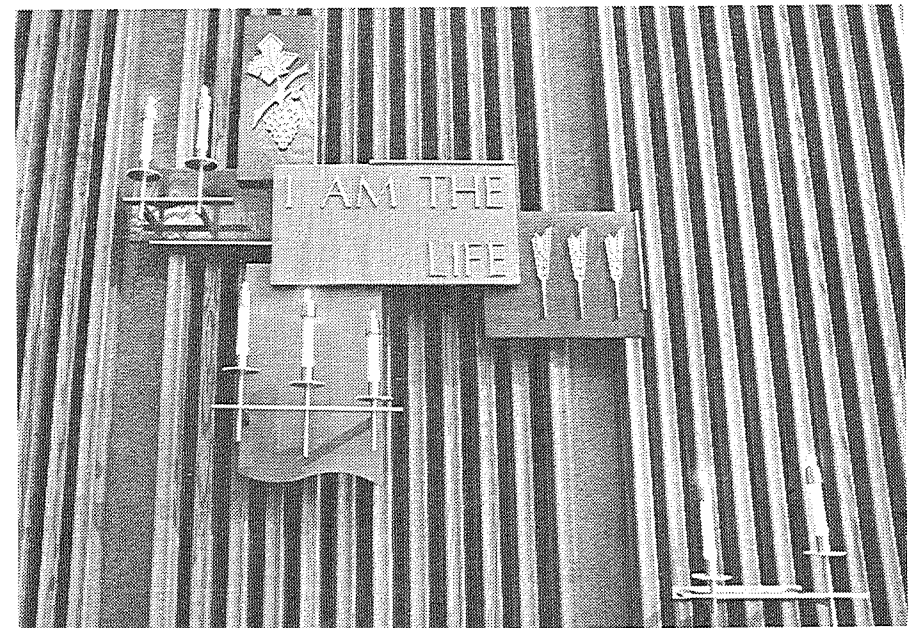
*A general view of
the Chancel of
Saint Michael's Church*

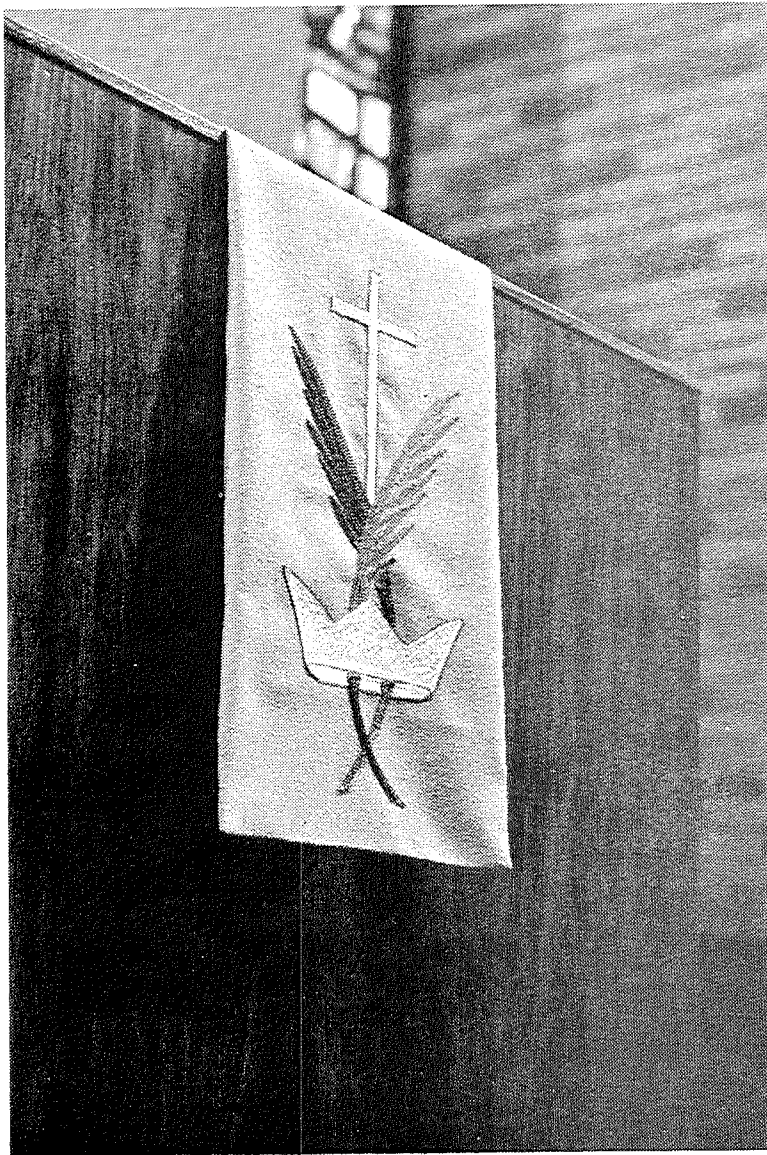


*The Font is placed at the entrance to
The Chancel on a white marble panel*



.. Through The Means Of Grace





Paraments such as this one remind worshippers of the traditions of the Church Year and the truths of Christian Doctrine

Christian Doctrine Woven Into Cloth

Nine sets of paraments are used in the Chancel throughout the Church Year. These carry symbols which reflect the special spiritual truths which are taught during the particular season.

A white set for use in Communion services features wheat and grapes on the altar frontlets, a chalice with host on the pulpit cloth and a Chi Rho in a Circle on the pastor's stole.

A second white set for Christmas carries a crib and Chi Rho emblem and Crown and Cross on the altar frontlets, a pot with flame and a branch on the pulpit cloth and a Chi Rho in the shape of a fish on the stole.

A third white set for Easter carries a cross with circle and a Chi Rho in a Circle with rays on the altar frontlet, an Easter Lamb with a flag of victory on the pulpit cloth and a cross with an orb on the stole.

A fourth white set for Epiphany carries a Chi Rho with crown and gold, frankincense and myrrh emblem on the altar frontlets, a cross with orb and decorative points on the pulpit cloth and a star on the stole.

The purple set for Advent carries a pot with flame on the frontlets, a cross and a cross with gold stars on the altar frontlet, a Veni Jesu emblem on the pulpit cloth and an A and O with a cross on the stole.

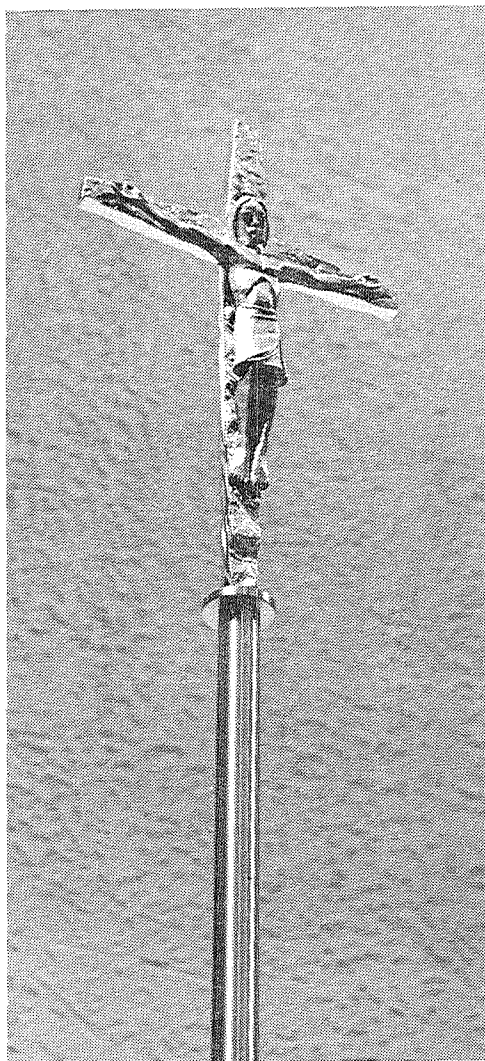
A second purple set for Lent carries a pointed cross with circle and a cross with a serpent on the altar frontlets; a cross with a wreath on the pulpit cloth and gold Latin cross on the stole.

The red set for Pentecost carries seven flames with the Holy Spirit symbolically descending on the frontlets, a Trinity symbol on the pulpit cloth and flames on the stole.

The green set for Trinity carries an A and O and a Chi Rho joined with an anchor on the frontlets, crown, palms and cross on the pulpit cloth and a triangle over a cross on the stole.

The black set for Good Friday carries nails and a crown of thorns on the altar frontlets, three crosses tilted on the pulpit cloth and Latin Crosses on the stole.

These Christian emblems are embroidered on raw silk cloth.

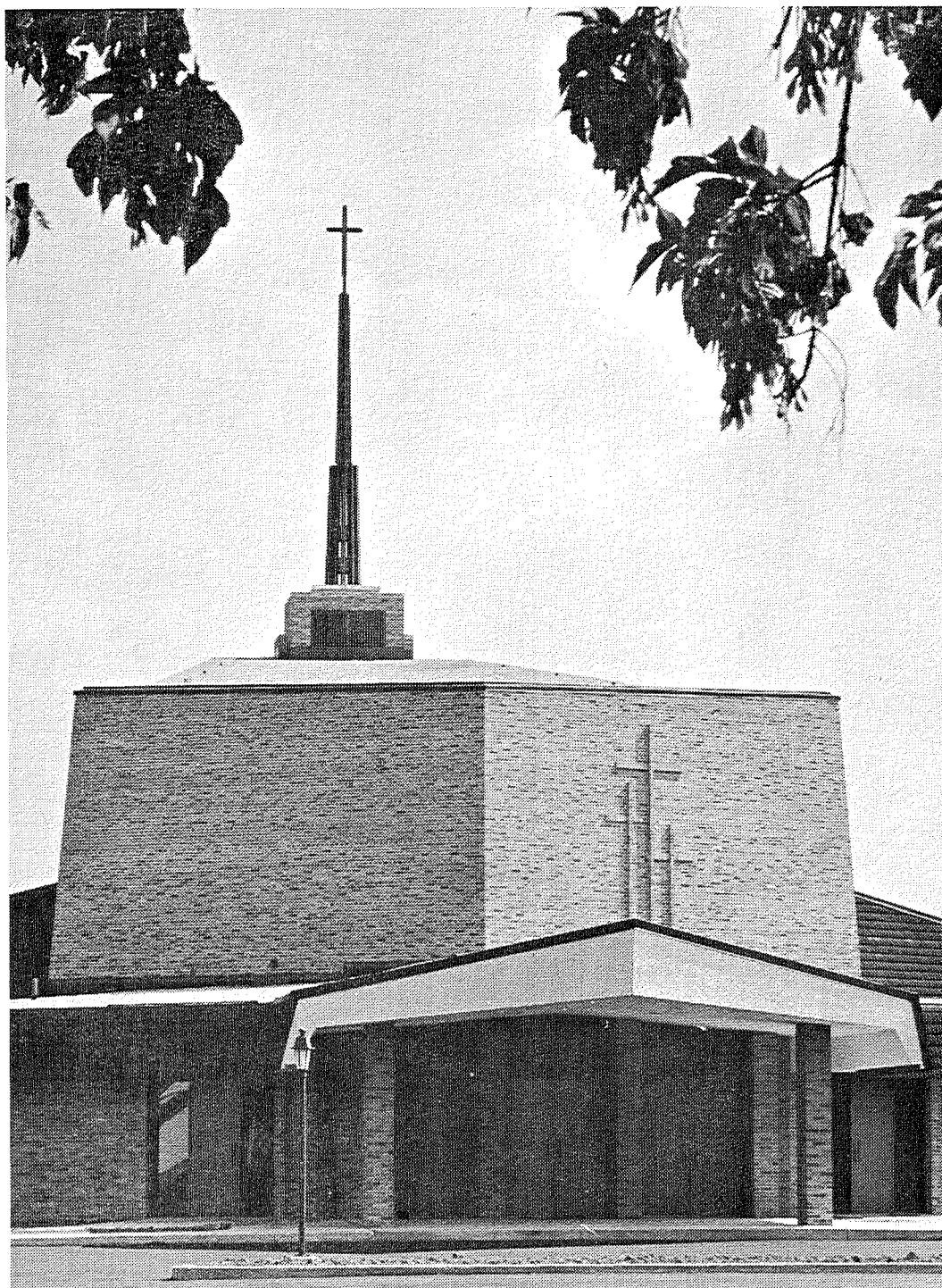


*The metal
Processional
Cross in
The Chancel*

*Brick and
metal crosses
recall the
Sacrifice
of Calvary*

Crosses Of Metal, Of Brick and Stone

Throughout the new St. Michael's Church, the cross is presented in many different forms and in many different materials. The exterior features crosses in brick, limestone and metal while inside the Nave, the cross is found in glass, metal and cloth.





Saint Michael:

Servant of God, Defender of The Faithful

The windows of St. Michael's Church have been executed in faceted glass and contain a great deal of symbolism — symbolism developed in the medieval church and yet presented in fresh contemporary style in the St. Michael's Nave and Chancel.

The two chancel windows of St. Michael's Church illustrate the two prominent roles played by Michael, the archangel. The earliest mention of Michael is in Daniel 10:13. The prophet had a vision of a great shining being who tells him that Prince Michael is His helper. The shining man is interpreted as the Messiah, Jesus Christ. A large figure of Christ in white and gold in the one on the left dominates both windows. Attending Him as a courtier prince, a little lower, is Michael, dressed in a tiara and royal robes wearing a sword. Daniel is shown on his knees at the base.

Balancing this, in the window on the right, is the New Testament reference to Michael found in Revelations 12:7. Here he is a warrior clad in armor, conquering the dragon Satan and casting him and his angels out of heaven. At the top of this window are the towers and battlements of the heavenly city. Balancing the figure of Daniel opposite at the bottom, John is seen sitting writing his vision.

The nave aisle windows illustrate the Christian Seasons. Each window contains an appropriate scene and symbols. At the top of each window is a different cross and these also have a connection with the Season.

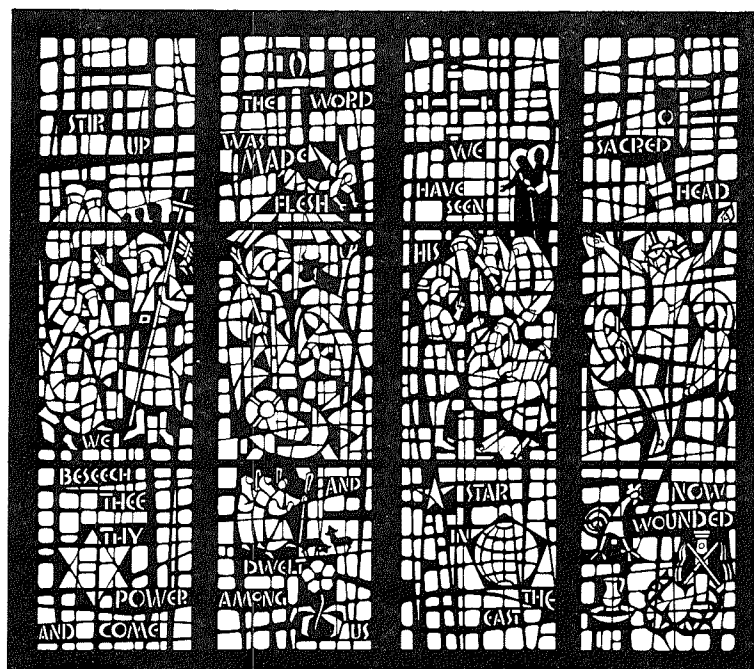
ADVENT: John the Baptist was the last of the messianic prophets before Jesus. Here he is shown preaching repentance to the people and advising that the Lamb of God is coming. The six pointed star of David is used because he was Jesus' ancestor.

The Tau cross is the Old Testament cross of prophecy. It is said to be the true form of the cross staff raised up with a serpent by Moses in the wilderness which is a type of Jesus. (John 3:14)

CHRISTMAS: Here is the Holy Family in the stable of Bethlehem. Shepherds, smaller in scale, draw near to worship the Child. An angel hovers over the roof. The symbol is the Christmas Rose. The cross at the top, the crux ansata, is called the cross of life. It is associated with the long awaited Messiah having been born at last.

EPIPHANY: This season illustrates the manifestation of Christ to the Gentiles. The wisemen came following a star to worship the Child. The globe of the earth shows that inhabitants of the whole world share in the benefits of God's love. The scene in this window is that of the Boy Christ in the Temple with the doctors. It was on this occasion that He voiced His own destiny. The Epiphany cross is really made up of four crosses which stand for the

These are the two large Chancel Windows which recall Saint Michael and his service to God and to Man



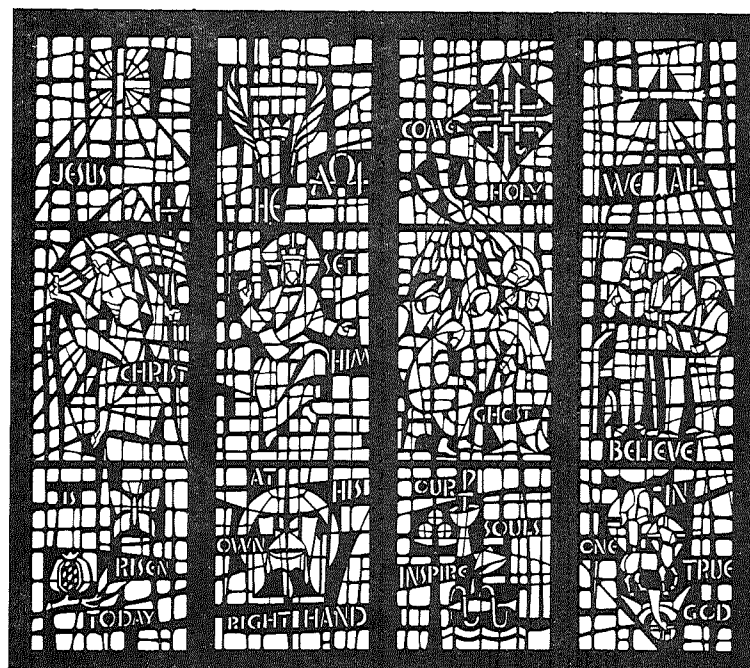
Advent, Christmas, Epiphany and Lent

four corners of the earth.

LENT: Here Jesus hangs on the cross, flanked by His mother Mary and His beloved disciple, John, into whose care He committed her. The Passion symbols below consist of the pillar and scourges and crown of thorns, the basin and pitcher with which Pilate washed his hands of guilt and the cock which crowed at Peter's denial which represents additionally the sins of mankind which continually "deny" Christ. The cross of suffering has pointed ends.

EASTER: Jesus Christ emerges from the empty tomb bearing aloft the banner of the victory of life over sin and death. The seeds burst from the splitting rind of the pomegranate as Christ burst from the grave which could not contain Him. The butterfly is a symbol of not only the Resurrection of Christ but of the resurrection of all Christians. The crawling larva represents life on earth. The cocoon is like the grave. Finally, the butterfly emerges and flies heaven-ward on beautiful wings. The rayed cross is the Easter cross. It is the empty cross from which Christ has departed surrounded with a halo of light.

ASCENSION: After forty days Christ as-



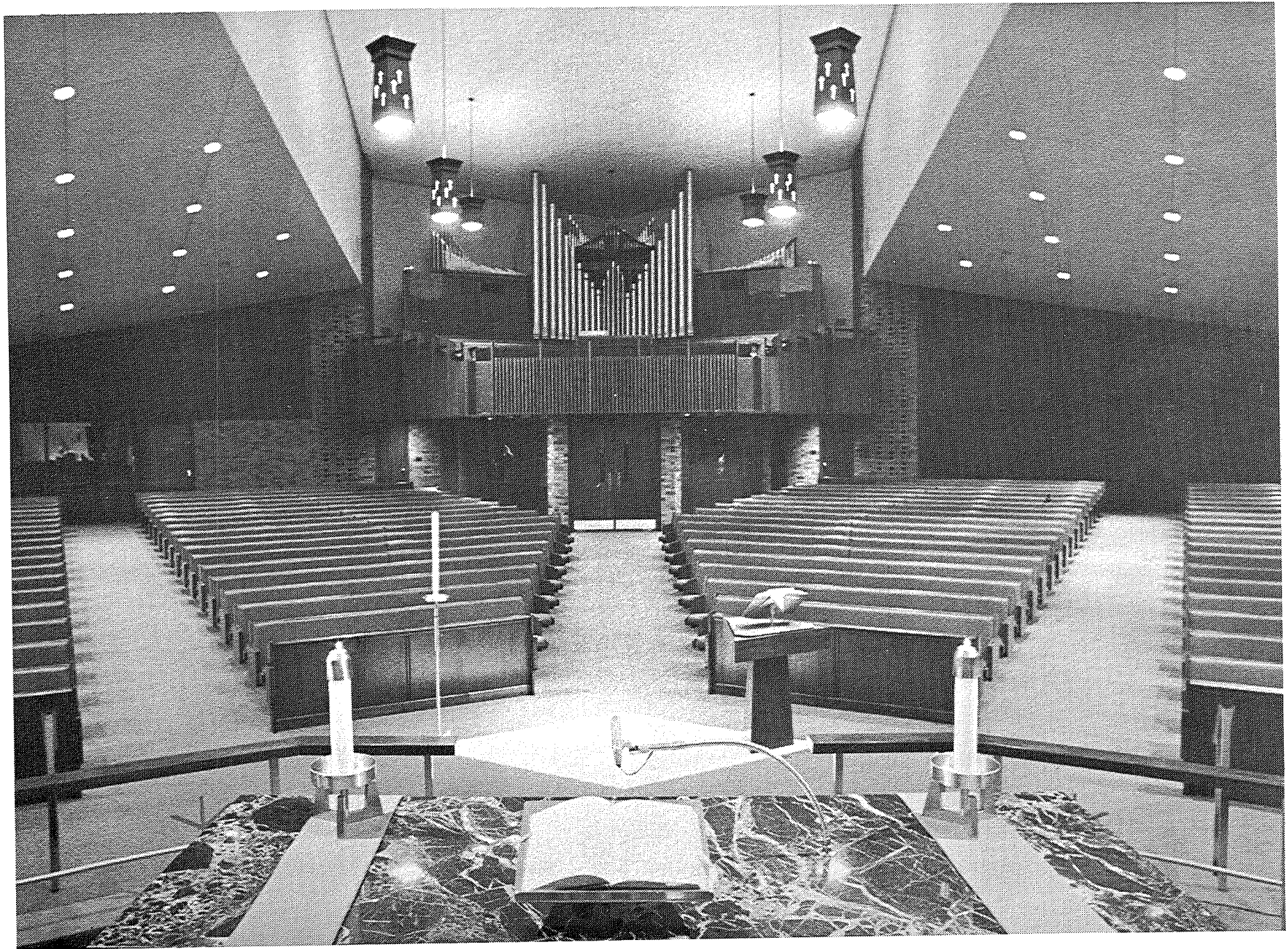
Easter, Ascension, Pentecost and Trinity

cended to heaven to reign. He sits on a throne, wearing a crown. The symbol consisting of the world, the open book and the scallop shell of Baptism with three drops of water recalls the Great Commission when Jesus sent His followers into the world to preach the Gospel and baptize in the name of the Father, the Son and the Holy Spirit. The cross in this window is encircled with a crown and martyrs' palms.

WHITSUNDAY: On the feast of Pentecost the faithful gathered in an upper room, felt the Holy Spirit descending with a sound like a mighty rushing wind and tongues of fire settled over each head. This is called the birthday of the Church. The symbols at the bottom are those of the two Sacraments, Baptism and Communion. This cross is composed of three parallel vertical members and three parallel horizontal ones.

TRINITY: Here are the everyday people in church, living a life of thanks and praise, the Church militant. Below are the hand of God, the Father, the Lamb of God the Son, and the descending dove of the Holy Spirit. The ends of this cross terminate in three petals. It is superimposed over a triangle.

The Drama of
the Church Year
Captured
In The Brilliance
of Glass



A View Of The Nave From The Chancel

Proclaiming God's Message Through The Glory Of Music

Music is an integral part of the worship service. It helps the Congregation voice its feelings of praise and thanksgiving to a merciful and gracious God.

The St. Michael's Church is equipped with a modern pipe organ capable of not only providing music for worship services, but also able to provide a special ministry of music through concert capabilities.

The organ, which was built by the Hilgreen-Lane Organ Company of Alliance, Ohio, consists of three manuals and 39 ranks. The organ has some 2,499 pipes.

The organ contains all the regular stops needed to lead congregational worship service, but also features stops which can be used for special effects for festivals and concert occasions.

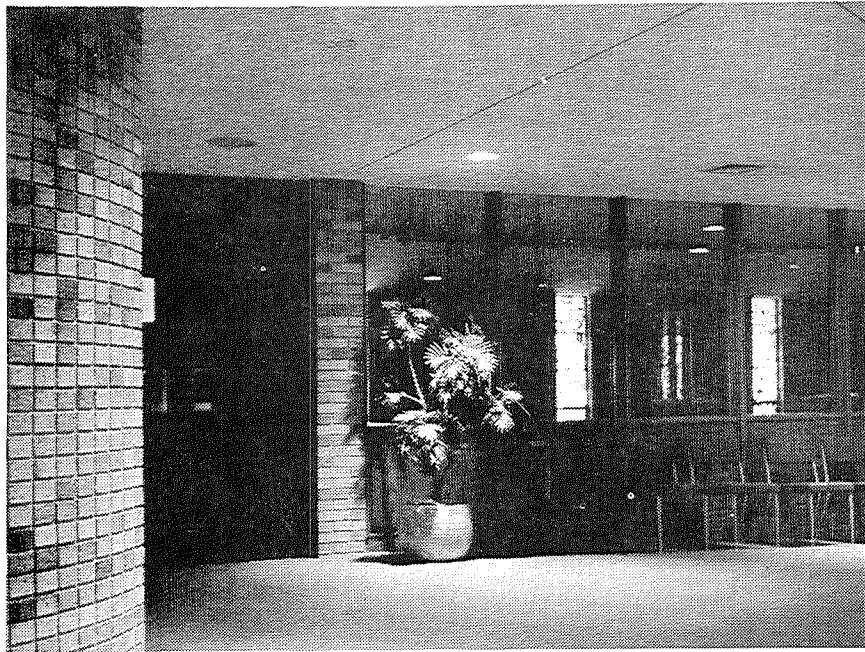
One such stop is the "Trompette en Chamade" which consists of real brass trumpets — a rarity in organs normally found in the United States.

A second feature which will be appreciated by the listener, is the chime facility which can be heard both from the organ and from equipment located in the church tower.

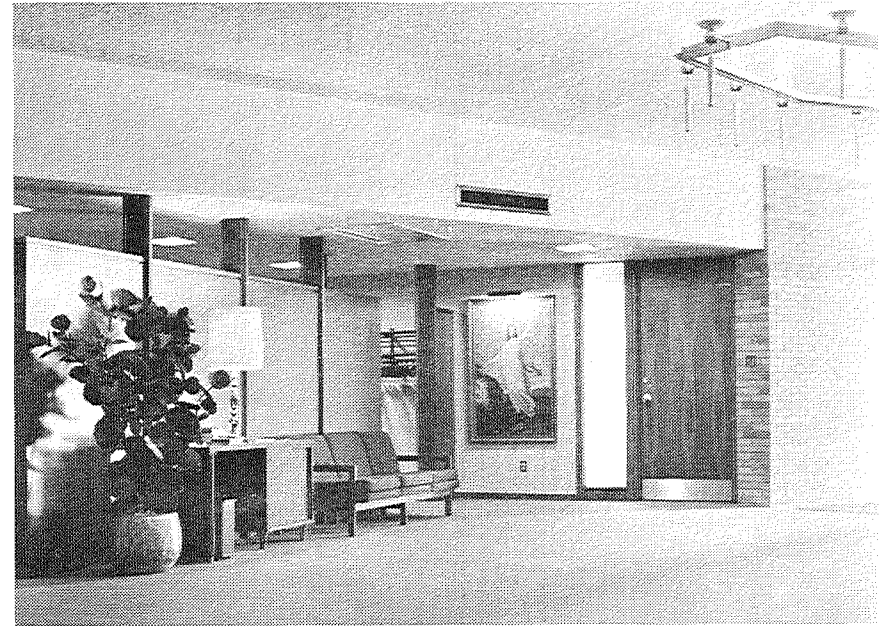
The new organ was completed in August of 1971 and was dedicated to the service of proclaiming God's grace through the glory of music.

*Hundreds of rich metal pipes carry
sounds of praise from the
organ of Saint Michael's Church*





The Narthex features curved walls, windows open to the Nave and spacious areas for arriving and departing visitors and worshippers



A spacious Foyer lead the worshippers into the Narthex. Adequate coat facilities are found on each side of the carpet entrance area

The Entrance . . Inviting A Worshipful Spirit

This beautiful overflow room can house several hundred additional worshippers and can also serve as a meeting facility





The Pastor's Office conveniently adjoins the Church Office and is modernly furnished



The Church Office features a spacious work area and facilities for the secretary

Administrative Areas Serve A Growing Parish

The modern-day parish is involved in a wide variety of activities that go beyond the Sunday morning services, as it seeks to fulfill its ministry to the community.

The St. Michael's Church was designed with this in mind and auxiliary facilities located around the church proper, provide for serving the needs of the parish boards, committees and many organizations as well as the day-to-day administrative operation of the parish.

Center for parish administration is the parish office area located off the main entrance to the Nave. It includes a modern office for the pastor which adjoins the church office.

The offices are carpeted and equipped with air-conditioning. The church office features facilities for the secretary and also features a special work area for printing, mailing and addressing operations.

The offices are paneled in walnut.

The two administrative offices are located next to the mother's cry room which overlooks the Nave. It also serves as a dressing room for weddings.

Other areas of the building provide for meeting rooms able to accommodate a wide variety of groups.

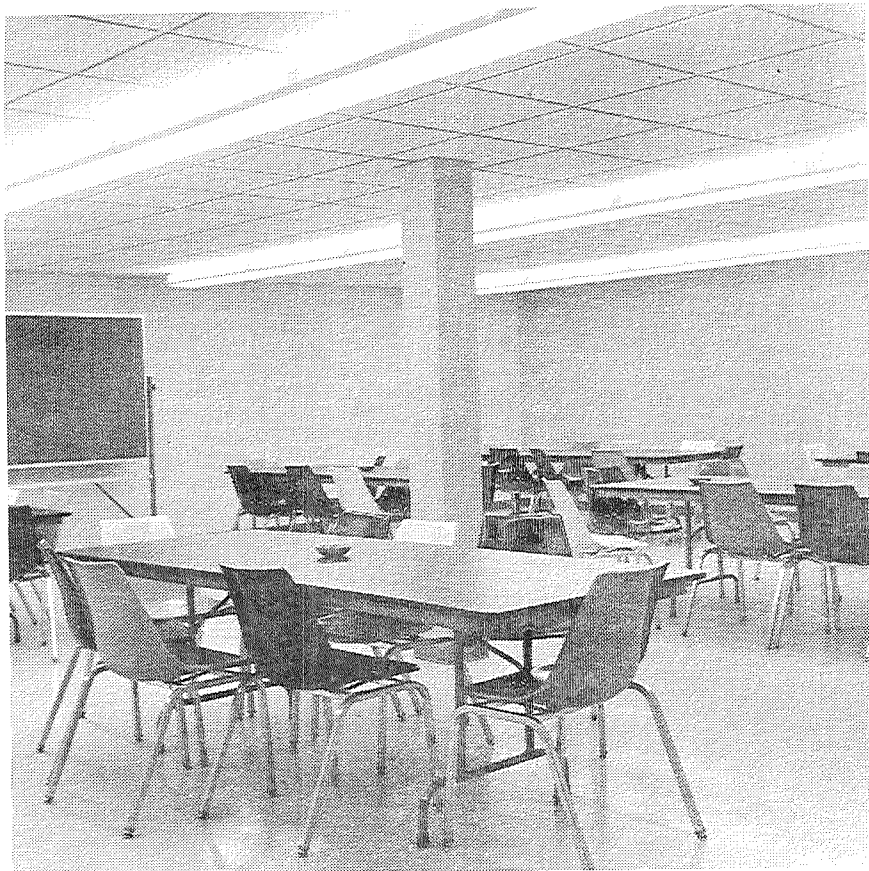
Facilities For An Expanding Program

Two large meeting rooms are located on the lower level. The larger is furnished with tables and chairs and the smaller with arm desk chairs. These rooms, reached from the Foyer or outside, provide meeting facilities for the parish organizations and administrative boards.

Also located in the lower level are heating equipment, central vacuum system equipment, along with men's and women's rest rooms. Duct work has been installed in the entire church for air conditioning if this becomes desirable in the future.



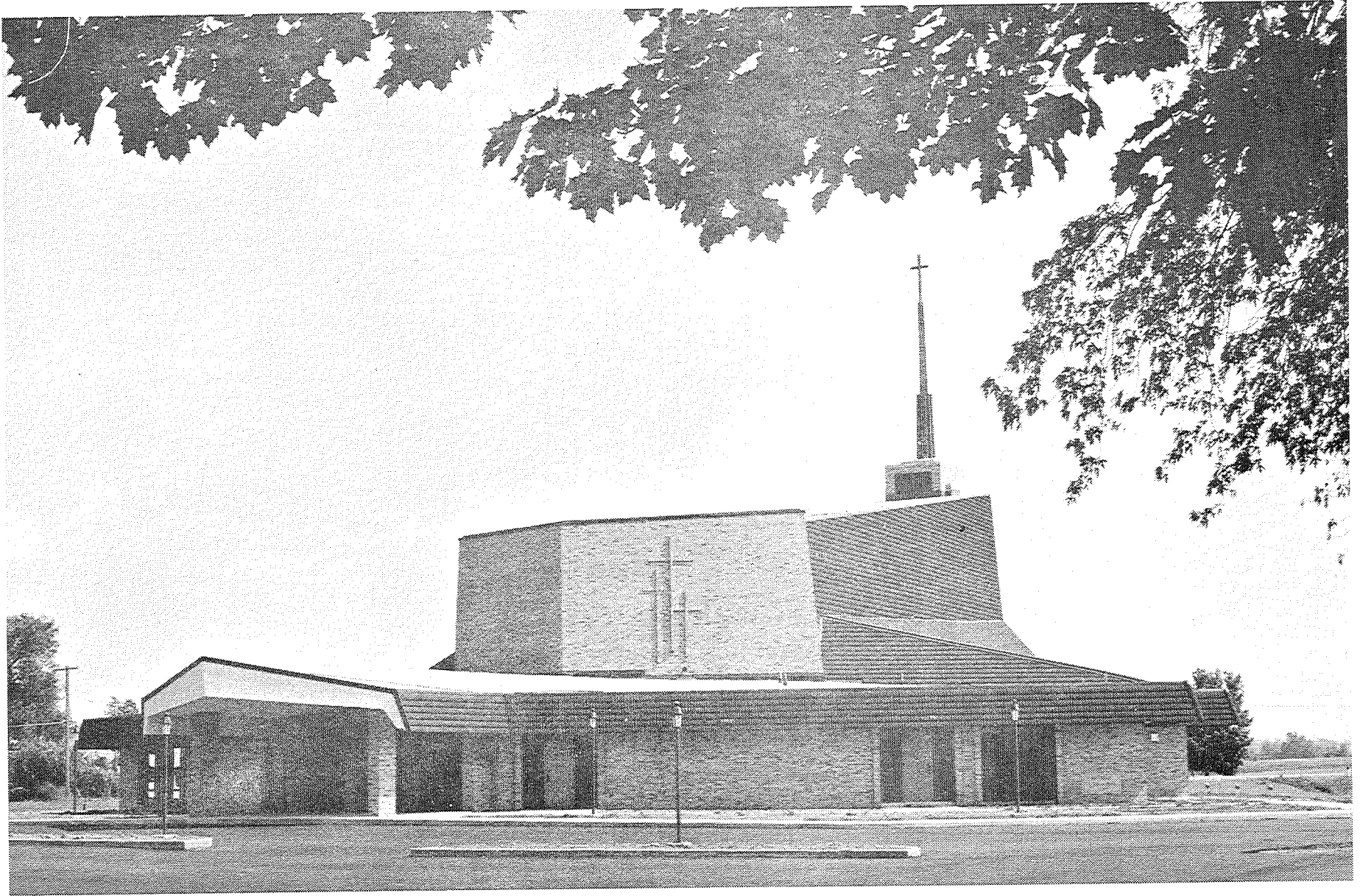
The spacious music room in the lower level features raised platforms for choir rehearsal and a large amount of storage room at the rear



One of the special features of the lower level of St. Michael's Church is the Music Room, located under the Foyer. The Music Room is equipped with three tiered platforms for rehearsals and also lends itself well to recitals, seminars, lectures and conferences.

The Music Room also has been equipped with ample storage areas for choir robes, music and instruments. The Music Room has been furnished with a grand piano, desk and chairs.

The lower level provides large meeting rooms for carrying on the variety of parish activities and programs



The new church blends traditional Lutheran heritage with modern building design. The building captures the flavor of the flat Richville farming community

Modern Interpretation of a Lutheran Community's Heritage

The Tower and Cross: Witness To A Passing World

Overlooking the community of Richville and the beautiful farmlands that surround it, is the tower and spire of St. Michael's Church.

The tower is constructed of brick and stone and is topped with a slender aluminum spire, which together reaches a total height of ninety feet.

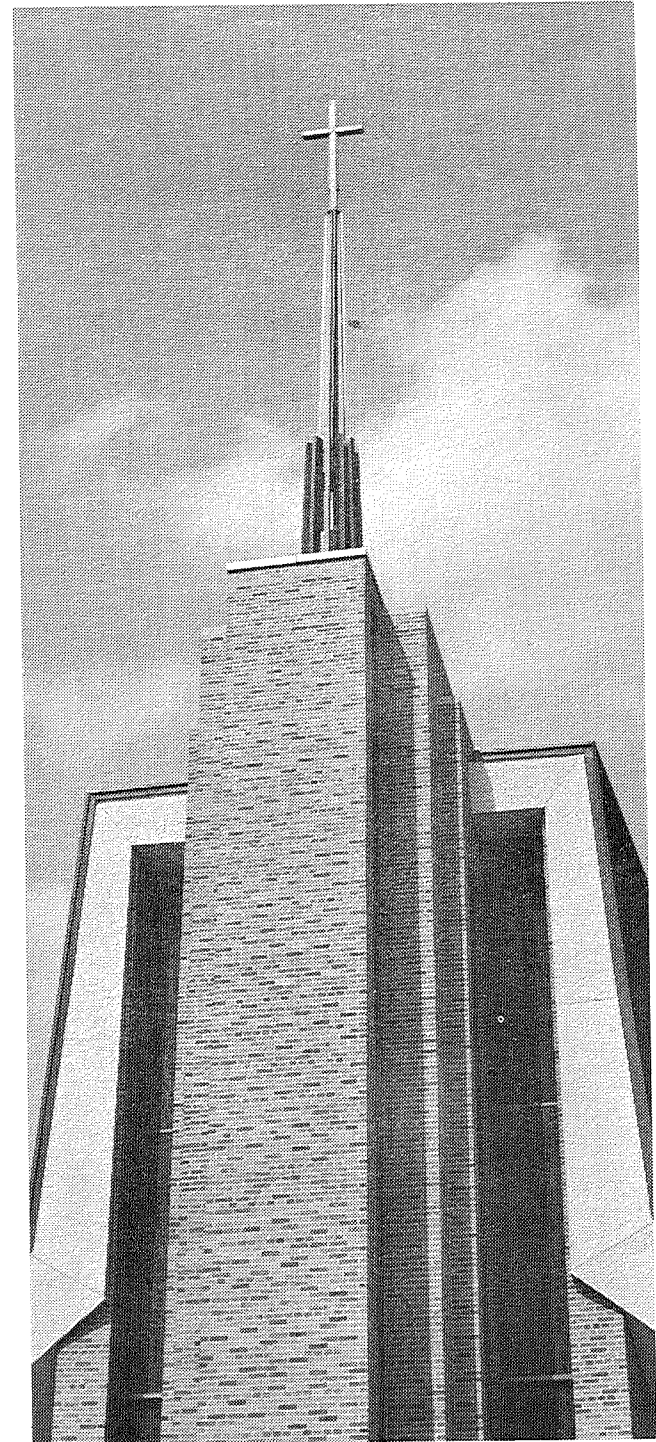
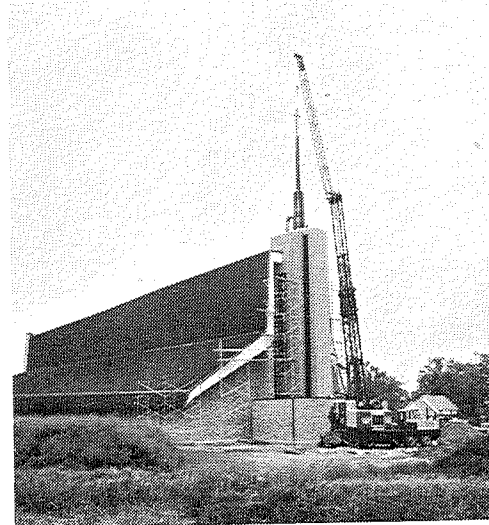
The tower serves as the Congregation's witness to the passing world, holding high the Cross of Christ and silently proclaiming the message of salvation that was won on it by the Savior for all men.

Within the tower is located the steelwork for the three church bells. It also contains a large exhaust fan and amplifiers for the Bell Industries tape system for playing recorded hymns at 6 p.m. each evening.

The base of the tower houses the sacristy, working sacristy and service areas for the chancel.

*The majestic tower and spire of
Saint Michael's Church*

*These two pictures were taken at the
time the metal cross and spire were placed on the tower*





These two bells from the old church are part of the new church's bell system

The Voice of Saint Michael's Church

The tower of St. Michael's Church houses three bells, with space allotted for the addition of a fourth bell at a later time.

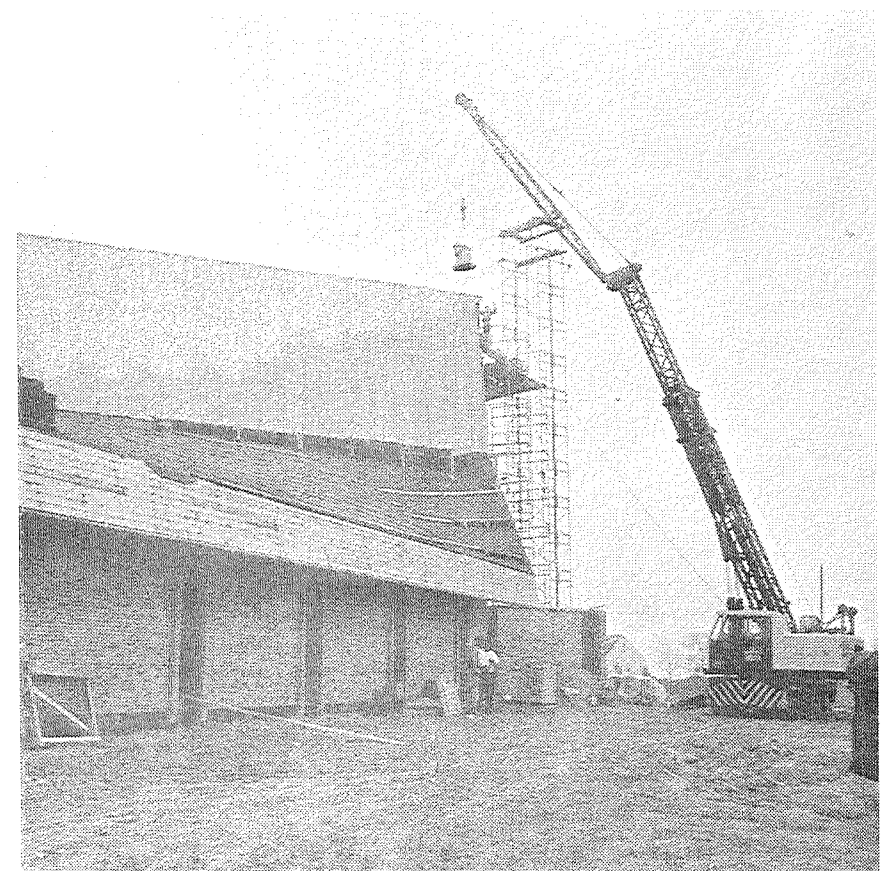
Two of the three bells were taken from the old church. These had been cast by the Jones Company, Troy Bell Foundry, Troy, New York in 1875. The third (new) bell was also cast by the same company. The old bells were refurbished and returned with the third bell for installation in the tower. All three bells swing and can be operated automatically or manually.

The first bell, weighing 1,000 pounds has a diameter of 37½ inches, and rings the note "A". The second bell weighs 600 pounds, has a diameter of 30¾ inches and rings the note "D". The third bell weighs 583 pounds, has a diameter of 29¾ inches and rings the note "C".

A huge crane was used to carefully place the three bells of Saint Michael's in the new tower



Together with the additional new bell, the refurbished old bells wait to be placed in the tower





The Dedication Plaque

The Building Committee

Carl Hoerlein		Chairman
Ruben Keinath		Secretary
Ludwig Bernreuter		Memorials
Ruben Bauer	Roy Holzhei	Albert Weber
Howard Bierlein	Clarence Kischnick	Arnold Zwerk
	Louis Schoenow	

The Planning Committee

Louis Schoenow		Chairman
Albert Scherzer		Vice Chairman
Ruben Keinath		Secretary
Howard Auernhammer	Howard Bierlein	Earl Holzhei
Ruben Bauer	Charles Buchinger	Donald Mossner
Ralph Bernreuter	Elmer Buchinger	Ernest Stange
William Bieberitz	Floyd Hecht	William Steck

The Finance Committee

Floyd Schluckebier		Chairman
Rudy Mossner		Secretary
James Gruber		Treasurer
Clarence Weiss	Jack Buchinger	Albert Scherzer
Ruben Keinath	Eugene Palmreuter	Donald Weber
Louis Schoenow	Ruben Miller	Robert Buchinger

The Builders and Suppliers

Merritt, Cole & McCallum	Architects
Farmington, Michigan	
William Bronner & Son	General Contractor
Frankenmuth, Michigan	
Lighthouse Electric	Electrical
Saginaw, Michigan	
Kuczwara-Richter	Mechanical
Saginaw, Michigan	
Hillgreen-Lane	Organ
Alliance, Ohio	
Endicott Church Furniture	Pews
Dalton, Illinois	
I. T. Verdin	Bells
Cincinnati, Ohio	
Willett Stained Glass Studios	Faceted Glass
Philadelphia, Pennsylvania	
Weber Lumber	Millwork & Cabinets
Richville, Michigan	
Audio Communications	Electronic Equipment
Saginaw, Michigan	
Empire Bronze	Chancel Designer & Furnisher
Chicago, Illinois	
Rush Stationers	Office Furnishings
Bay City, Michigan	
Atkins Hardware & Furniture	Carpeting
Vassar, Michigan	
Zander Company	Paraments
Milwaukee, Wisconsin	
John Bees	Plastering
Saginaw, Michigan	

John B. Rossi Floor Tile, Slate & Torginal
Saginaw, Michigan

Delta Acoustical Ceiling
Saginaw, Michigan

Dixie Cut Stone Stone Materials
Bridgeport, Michigan

Bruno-Martin Roofing
Saginaw, Michigan

Adam Meyers & Sons Painting
Saginaw, Michigan

DeMaet. Drainage & Excavating
Bridgeport, Michigan

Ray Lentner Grading, Drainage & Excavating
Saginaw, Michigan

Saginaw Ashphalt Blacktopping
Saginaw, Michigan

A & J Sheetmetal Sheetmetal
Saginaw, Michigan

Paul Gollin. Blocks
Munger, Michigan

Harris-Fischer. Steel
Saginaw, Michigan

Pittsburg Glass. Plate Glass
Saginaw, Michigan

Rau Brothers Drapery
Frankenmuth, Michigan

Acme Brick
Saginaw, Michigan

William Bergman Jr. Landscaping
Reese, Michigan

E. L. Nickodemus Incinerator
Richville, Michigan

Kirchman Bros. Co. Kitchen Furnishings
Saginaw, Michigan

The Lutheran Book Store Hymnals
Detroit, Michigan

Bell Industries, Inc. Tower Audio Equipment

Miller Fire Protection Corp. Extinguishers
Saginaw, Michigan

Typewriter Exchange Office Machines
Saginaw, Michigan

Augsburg Publishing House Offering Plates

Elmer G. Arnold Sales. Custodial Materials

Will Baumer Candle Co., Inc. Chancel Candles

Stephen H. Daniels Pottery Planters

Herman G. Behr Co. Outside Bulletin Board

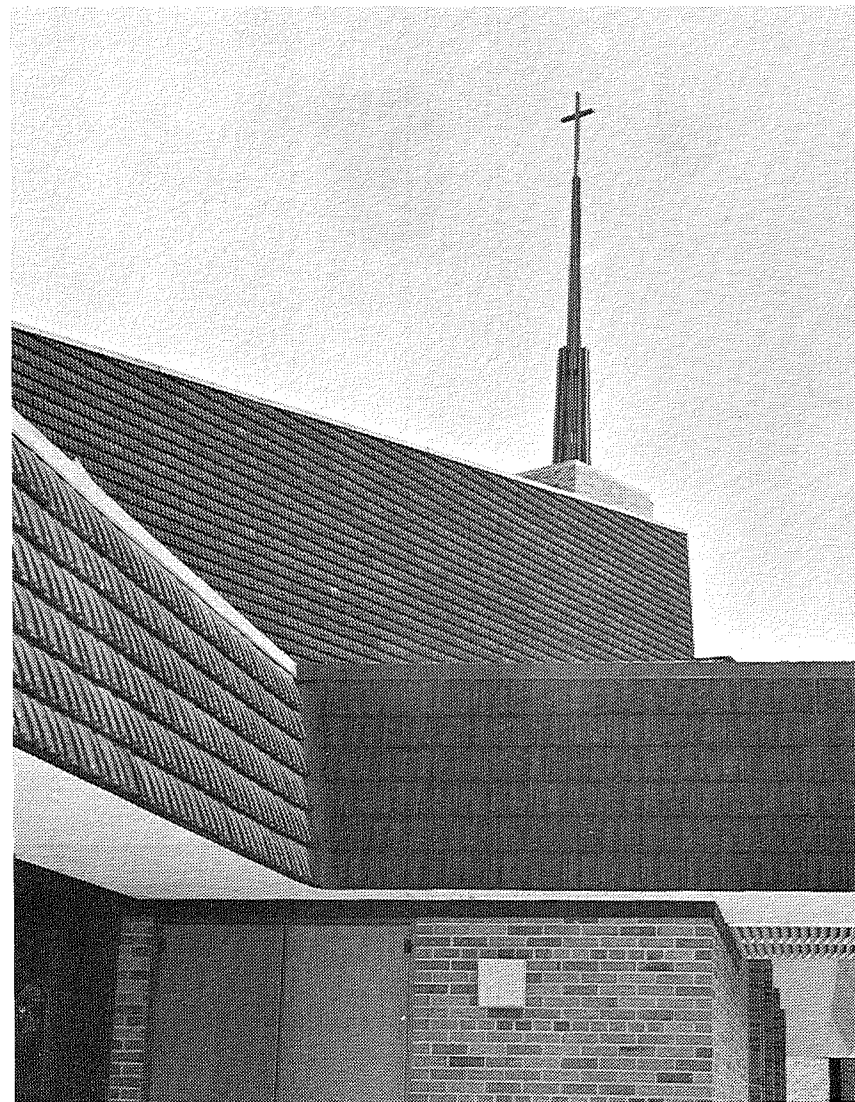
Cooper Wallpaper & Art Store Restoration & Framing

George Grainger Drill Well

Clifford Mossner. Trenching

E. J. Moore Co. Choir Gowns

Oscar Rau Appliances



Special Gifts and Memorials

Members and friends of the congregation have presented the following special gifts and memorials to Saint Michael's Lutheran Church. These special gifts and memorials are given permanent recognition in the Book of Memorials located in the Church.

THE ALTAR—A Thankoffering given by the members of the St. Michael's Mary Martha Guild.

THE PULPIT—A Thankoffering given by Clarence and Louise Palmreuter.

THE BAPTISMAL FONT—An abiding gift given by Mr. and Mrs. Peter Kern in honor of their silver wedding anniversary.

THE MARBLE BASE FOR THE BAPTISTRY—Given in memory of Kenneth Schiefer by Mrs. Carol Sue Schiefer, Jeffery Schiefer and Mr. and Mrs. Emil Schiefer.

THE BAPTISMAL EWER—A Thankoffering given by Mr. and Mrs. Robert Cumings.

THE ALTAR PARAMETERS—A Thankoffering given by Mr. and Mrs. Walter Rodammer.

THE PULPIT AND LECTERN PARAMETERS—Given in memory of John Richard Schluckebier by the school children of St. Michael's Lutheran School and memorial wreaths.

PROCESSIONAL CROSS—Given in memory of Albert and Emily Stange by Mr. and Mrs. Ernest A. Stange.

ALTAR FLOWER VASES—An abiding gift given by Maria E. Hohmann in honor the of golden wedding anniversary of her parents Justus and Elizabeth Stiebing.

THE WEDDING KNEELER—An abiding gift given by the members of St. Michael's Ladies Aid in honor of their 50th anniversary.

ALTAR CANDLESTICKS—Given in memory of her father Fred Obermiller by Shirley Bernreuter.

ALTAR MISSAL (BOOKREST)—Given in memory of Harry Herman Laux by Mrs. Mathilda Laux.

THE BIBLE—Given in memory of Walter Keinath by Mrs. Walter Keinath.

TWO CANDELABRAS AND WALL DECORS IN SANCTUARY AREA—Given in memory of Mr. and Mrs. Martin Ruffertshoefer by Mrs. Martin Ruffertshoefer.

REREDOS STATUE OF OUR RISEN LORD—A Thankoffering given by Mr. and Mrs. Ruben Keinath.

THE SANCTUARY BRONZE WALL CROSS—A Thankoffering given by Roy and Lillian Holzhei.

ETERNAL LIGHT, WALL UNIT—Given in memory of Pastor and Mrs. William Bekemeier by the family of Pastor and Mrs. William Bekemeier.

PULPIT BIBLE—A Thankoffering given by Francis Lichon.

COMMUNION RAIL, BRONZE SUPPORTS (BOTH)—A Thankoffering given by Roy and Lillian Holzhei.

COMMUNION WARE TRAY and GIFT FOR THE ORGAN FUND—Given in memory of Joan M. Zwerk by Mr. and Mrs. James Hecht, Mr. and Mrs. Richard Holzhei, Mr. and Mrs. Gerald Heinlein, Mr. and Mrs. Terry Keinath, Mr. and Mrs. Robert Schnell, Mr. and Mrs. James Trump and Mr. and Mrs. Eugene Palmreuter.

PASCHAL CANDLE HOLDER—An abiding gift given by Mr. and Mrs. Waldo R. Schluckebier in honor of their 25th wedding anniversary.

COMMUNION CHALICE—Given in memory of husband Clarence A. Kern and son Donald Kern by Mrs. Clarence A. Kern.

COMMUNION CHALICE, CIBORIUM, FLAGON AND PATEN—Given in memory of Mr. Bernhardt Bauer and Mrs. William C. Hack by Mr. and Mrs. Ruben Bauer, Randy and Charles.

CHURCH FLAG AND AMERICAN FLAG—Given in memory of our Gold Star mothers, Anna D. Schwab and in living memorial of Emma M. Miller by the Alvin F. Miller Aux. Unit No. 400, Richville, Michigan.

FACETED GLASS WINDOWS:

WINDOWS OF THE ANGEL SAINT MICHAEL IN CHANCEL AREA (2)—A Thankoffering given by the members of St. Michael's Ladies Aid.

WINDOW OF ADVENT IN NAVE—An abiding gift given by Mr. and Mrs. Adolph A. Hecht in honor of their golden wedding anniversary.

WINDOW OF CHRISTMAS IN NAVE—Given in memory of husband William Mueller by Mrs. William Mueller.

WINDOW OF EPIPHANY IN NAVE—A Thankoffering by the St. Michael's Walther League and the St. Michael's Lutheran School children.

WINDOW OF LENT IN NAVE—Given in memory of Otto Rodammer Sr. by Mrs. Otto Rodammer Sr., Miss Edna Rodammer, Mr. and Mrs. Arnold Trinklein, Mr. and Mrs. Fred Weiss, Mr. and Mrs. Otto Rodammer Jr. and Mr. and Mrs. Milton Rodammer, also in living memory of Mrs. Otto Rodammer Sr. by her children.

WINDOW OF EASTER IN NAVE—Given in memory of Arthur Loesel by Martha Loesel and children.

WINDOW OF PENTECOST IN NAVE—Given in memory of husband Carl Keinath by Mrs. Carl Keinath.

WINDOW OF ASCENSION AND WINDOW OF TRINITY IN NAVE (2)—Given in memory of William Bernreuter Pvt. 1st Cl. 125 Inf. 32 Div. died Feb. 25, 1923 effect of active duty in World War One, by Ludwig and Clara Bernreuter.

HAND RAILS IN CHANCEL AREA—A Thankoffering given by the members of St. Michael's Golden Age Group.

NAVE LANTERN—A Thankoffering given by Mr. and Mrs. Earl Mossner and family.

NAVE LANTERN—A Thankoffering given by Mr. and Mrs. Ralph Frank.

NAVE LANTERN—A Thankoffering given by Herbert and Milda Bierlein.

NAVE LANTERN—A Thankoffering given by Delmar and Donna Bierlein and David and Ann Marie.

NAVE LANTERN—An abiding gift given by Mr. and Mrs. Ernest Ganschow, Douglas, Helen, Carrie and Jeanne in honor of the 47th wedding anniversary of my parents, Mr. and Mrs. Hugo J. Mossner.

THREE NAVE LANTERNS—Given in memory of husband Teacher Walter Boesenecker by Mrs. Clara Boesenecker.

HYMN BOARDS—Given in memory of Mr. and Mrs. Clarence Heinlein Sr. by Clarence and Irene Heinlein and Walter and Doris Bauer.

COLLECTION PLATES AND ONE CHANCEL PEW—Given in memory of Mr. and Mrs. George Walz Sr. by Mr. George Walz and Miss Pauline Walz.

ONE CHANCEL PEW—A Thankoffering given by Mr. and Mrs. Mark Oldenburg.

CHANDELIER IN FOYER—Given in memory of John L. and Matilda Hecht by Esther Stange, Hilda Bierlein, Gladys Bierlein and the children of Wilmer Hecht.

TINTED GLASS WINDOWS IN MULTIPURPOSE ROOM (2)—Given in memory of Walter Bierlein Sr. by Mrs. Mathilda Bierlein and children.

IN MULTIPURPOSE ROOM (1)—An abiding gift given by Clarence and Arlita Kischnick in honor of their 40th wedding anniversary.

IN MULTIPURPOSE ROOM (1)—A Thankoffering given by Mr. and Mrs. Arnold Schmandt, Mr. and Mrs. Larry Schmandt and Kenneth Schmandt.

TINTED GLASS WINDOWS:

IN PASTOR'S STUDY—Given in memory of Mr. and Mrs. Gottfried Huber by Mr. and Mrs. George Huber and Mr. and Mrs. Vernon Riethmeier.

IN SACRISTIES—Given in memory of my parents Mr. and Mrs. John M. Mossner by Mrs. Pauline L. Roedel.

TINTED GLASS WINDOW AND SECRETARIAL

CHAIR IN OFFICE—Given in memory of Carl M. Reinert by Mrs. Carl M. Reinert, Mr. and Mrs. Arthur Reinert, Mr. and Mrs. Glenn Doud and family, Mr. and Mrs. Norman Reinert & family and Mr. & Mrs. Arnold Reinert and family.

THE BRICK NAME SIGN OF THE CHURCH—Given in memory of Mrs. William C. Hack, Ralph Hack and Barbara Dodenhoff by William C. Hack.

THE ALUMINUM SPIRE AND CROSS—Given in memory of Mrs. William Bekemeier and Mrs. William Schoenow and all departed members, and as a living memorial for our other members by the members of St. Michael's Ladies Aid.

THE CHURCH BELLS—Given in memory of Mr. and Mrs. George A. Hecht and our sister Elsie M. Hecht by Irene B. Hecht and the Earl G. Hecht family.

STONE PANEL AND CROSS ON FACE OF SACRISTIES—An abiding gift given in honor of our parents Mr. and Mrs. Ludwig Bernreuter and Mrs. Fred Obermiller by Mr. and Mrs. Ralph Bernreuter.

EXTERIOR FLOODLIGHTS FOR SACRISTIES, TOWER AND SPIRE—A Thankoffering given by Mr. and Mrs. Paul C. Daenzer and daughter Marlene.

AMPLIFIER SYSTEM IN TOWER—A Thankoffering given by Norman and Anna Mossner.

INSTALL LOUDSPEAKER SYSTEM IN TOWER—A Thankoffering given by Mr. and Mrs. Carl Hoerlein and family.

THE CORNERSTONE—A Thankoffering given by Erwin M. Rupprecht.

CORNERSTONE LITE—A Thankoffering given by Kathleen Ann Bierlein.

TIMER FOR THE TOWER CHIMES—A Thankoffering given by Mr. and Mrs. Elmer Weber.

EXTERIOR DOUBLE DOORS AT MAIN ENTRANCE (CENTER)—Given in memory of Norman Hecht (Former Church Elder) by Mrs. Martha Hecht, Mr. and Mrs. Wilbur Hecht and family, Mr. and Mrs. John Gannon (the former Marlene Hecht) and family.

EXTERIOR DOUBLE DOORS AT MAIN ENTRANCE (RIGHT)—Given in memory of Bernhardt Bauer by Mrs. Amanda Bauer and family.

EXTERIOR DOUBLE DOORS AT MAIN ENTRANCE (LEFT)—Given in memory of Barbara Bierlein and Louisa Walter by Mr. and Mrs. Ruben W. Bierlein and family.

EXTERIOR DOUBLE DOORS AT WEST SIDE ENTRANCE—Given in memory of Mr. and Mrs. J. Michael Buchinger and Mr. and Mrs. Frank Rebuehr by Mr. and Mrs. Howard Buchinger.

EXTERIOR DOUBLE DOORS AT EAST SIDE ENTRANCE—A Thankoffering given by Jacob and Helen

CHOIR PRACTICE PIANO—A Thankoffering given by St. Michael's Junior Choir.

LADIES ROOM VANITY—Given in memory of their mother Mrs. Matilda Bierlein by Mrs. Selma Bierlein, Mr. and Mrs. Harvey Bierlein, Mr. and Mrs. Howard Bierlein, Mr. and Mrs. Walter Bierlein Jr., Mr. and Mrs. Edward Bierlein, Mr. and Mrs. Roy Bierlein and Mr. and Mrs. William Rauh.

CREDENZA IN NARTHEX AND COMMUNION VEILS & PURIFICATORS—Given in memory of husband Albert Kamm and son Roy Kamm by Mrs. Albert Kamm.

CHOIR GOWNS—A Thankoffering given by St. Michael's Senior Mixed Choir.

EMBOSSING THE CHURCH HYMNALS—A special gift by Rev. and Mrs. V.J. Spiekerman & family.

REFRIGERATOR—A donation on purchase given by Oscar F. Rau of Oscar Rau Furniture and Appliances.

WALNUT DOORS—Cost difference of Walnut doors over Oak doors donated by Weber Lumber and Millwork Inc.

THE PUBLIC ADDRESS SYSTEM IN CHURCH FUND—A Memorial given in memory of Albert Kern and in living memory of Mrs. Lydia Kern by Mr. and Mrs. Clarence Weiss and family.

THE PARKING LOT FUND—The gifts and memorials given to this fund:

A Thankoffering given by Mr. and Mrs. Carl Hoerlein and family.

SOFA IN FOYER AND THE BOOK OF MEMORIALS—An abiding gift given by Mr. and Mrs. Ludwig Bernreuter in honor of their 45th wedding anniversary.

CREDENZA IN FOYER—Given in memory of parents John M. and Christiana Schluckebier and John F. and Elizabeth Heinlein by Arthur H. and Alma E. Schluckebier.

ONE TABLE LAMP IN FOYER—Given in memory of grandson John Richard Schluckebier who would have been a member of the 1971 confirmation class by Mr. and Mrs. Arthur H. Schluckebier.

ONE TABLE LAMP IN FOYER—Given in memory of Mr. and Mrs. Clarence Schluckebier who died April 1, 1961 by Mrs. Matilda Weber, Mr. and Mrs. Albert Weber and family, Mr. and Mrs. Howard Weber and family, Mr. and Mrs. William Weber and family.

ONE LOUNGE CHAIR IN FOYER—An abiding gift given by Mr. and Mrs. Gordon Bierlein and family, Mr. and Mrs. Carl F. Bierlein and family, Mr. and Mrs. Ronald Bierlein and family and Mr. and Mrs. Duane Eisner in honor of the birthdays of their parents Mr. and Mrs. Carl W. Bierlein.

FRAMING AND REFINISHING THE ALTAR PICTURE FROM THE OLD CHURCH—An abiding gift given by the members of the class of 1911 in honor of their 60th

confirmation anniversary.

THE CHURCH ORGAN FUND—The gifts and memorials given to the organ fund:

A Thankoffering given by Mr. and Mrs. Fred Beckemeier Sr.

A Memorial given in memory of Mr. and Mrs. Fred Loesel by Richard Loesel and Roland Loesel.

An abiding gift given in honor of her granddaughter Mrs. Lois Bickel Teacher of St. Michael's Lutheran School and in memory of her husband Gustav Neubauer who died February 8, 1968 by Mrs. Selma Neubauer of Hubbard, Iowa.

A Thankoffering given by Mr. and Mrs. Norman J. Bernreuter.

A Thankoffering given by St. Michael's Walther League and St. Michael's Lutheran School children.

A Memorial given in memory of Lynndal Parshall who died October 12, 1920 and in memory of George A. and Margereth C. Winkler by Amanda Parshall and Hattie M. McDonald.

A Thankoffering given by the local A.A.L. Branch No. 1736.

A Memorial given in memory of John Richard Schluckebier who would have been confirmed this year (1971) by his classmate Sandra Kay Bernreuter.

A Memorial given in memory of their father Ernest Schmandt and in living memory of their mother Mrs. Anna Ortner by Roy Schmandt, Florence List, Ella Bierlein, Verna Trombley and Erna Trombley.

A Memorial given in memory of her parents Mr. and Mrs. John M. Mossner by Mrs. Martha Hecht.

An abiding gift given by Mr. and Mrs. William Biebertz in honor of their 45th wedding anniversary.

A Memorial given in memory of Kristie Kay Rupprecht who passed away ten years ago June 9, 1961 by Mr. and Mrs. Arnold Rupprecht and family.

An abiding gift given in honor of the 45th wedding anniversary June 20, 1971 of her grandparents Mr. and Mrs. Ludwig Bernreuter by Debra Jean Bernreuter.

An abiding gift given by Mr. and Mrs. Howard Bierlein in honor of their 25th wedding anniversary.

A Thankoffering given by Falkenberg-Palmreuter wedding collection.

A Memorial given in memory of Wilmar Geyer and Mrs. Meta Schreiner by Mr. and Mrs. Glenn Mossner and family.

A Memorial given in memory of Kristie Kay Rupprecht by Mr. and Mrs. Melvin Rupprecht and Michelle.

A Thankoffering given by Mr. and Mrs. Elmer Holzhei.

A Memorial given in memory of Wilbert Wirth by Mr.

Hecht.

EXTERIOR DOOR AT ENTRANCE TO PASTOR'S STUDY AND OFFICE—Given in memory of Alvin C. Knoll by Mrs. Alvin C. Knoll and family.

EXTERIOR DOOR AT RIGHT ENTRANCE TO BASEMENT—Given in memory of husband Bernhard Kern who died in 1933 by Mrs. Christiana Kern.

EXTERIOR DOOR AT LEFT ENTRANCE TO BASEMENT—A Thankoffering given by Arthur and Dora Ruprecht.

EXTERIOR DOOR AT ENTRANCE TO SACRISTY—Given in memory of Mr. and Mrs. Ludwig Hecht and Mr. and Mrs. Benjamin Schultz by Mr. and Mrs. Marvin Hecht.

EXTERIOR DOOR AT ENTRANCE TO WORKING SACRISTY—Given in memory of my husband George Schmandt by Mrs. Lena Schmandt.

DOUBLE DOORS FROM FOYER INTO NARTHEX (RIGHT)—Given in memory of our parents Hulda Huber, Leonhard and Julia Ortner, and in living memory of Fred Huber by Mr. and Mrs. Walter Huber.

DOUBLE DOORS FROM FOYER INTO NARTHEX (LEFT)—Given in memory of Mr. and Mrs. George Mossner and Mr. and Mrs. John Maurer by Harold and Lydia Mossner.

DOUBLE DOORS FROM NARTHEX INTO NAVE (CENTER)—Given in memory of Mr. and Mrs. George Mossner and Mr. and Mrs. Andrew Schiefer by Hugo J. and Florence A. Mossner.

DOUBLE DOORS FROM NARTHEX INTO NAVE (RIGHT)—A Thankoffering given by Eugene and Nancy Palmreuter.

DOUBLE DOORS FROM NARTHEX INTO NAVE (LEFT)—A Thankoffering given by Mr. and Mrs. Otto Trump.

DOUBLE DOORS FROM WEST SIDE ENTRANCE INTO NAVE AND THE DOUBLE DOORS FROM EAST SIDE ENTRANCE INTO NAVE—Given in memory of our parents William and Mary Kern and Teacher Walter Boesenecker and in living memory of Mrs. Clara Boesenecker by Edwin B. and Dorothea Kern.

THE WOOD PANELING IN NAVE AREA AT FRONT (R.S.)—A Thankoffering given by Richard and Sharon Holzhei, Cindy, Carla and Scott.

THE WOOD PANELING IN NAVE AREA AT FRONT (L.S.)—A Thankoffering given by Kenneth and Anita Holzhei and family.

PASTOR'S STUDY FURNISHING (DESK)—Given in memory of Sandra Fay Mossner by Mr. and Mrs. Ruben Mossner, Connie and Thomas.

PASTOR'S STUDY FURNISHING (CHAIR)—Given in

memory of Ludwig Rogner and Mrs. Richard H. Bierlein by Mr. and Mrs. Harvey Maurer.

PASTOR'S STUDY FURNISHING (CHAIR)—Given in memory of our parents Mr. and Mrs. John M. Schluckebier and Mr. and Mrs. George M. Schultz by Alvin and Agnes Schluckebier.

PASTOR'S STUDY FURNISHING (CHAIR)—Given in memory of Mr. and Mrs. Paul Gruber and Mrs. Conrad Mueller and in living memory of Mr. Conrad Mueller by Mr. and Mrs. Ernest Gruber.

PASTOR'S STUDY SWIVEL ARM CHAIR*—Given in memory of Henry Schoenow by Mr. and Mrs. James E. Gruber.

FRAMED PICTURE OF CHRIST—Given in memory of daughter Kathryn Ann Botkins Lich by Mr. and Mrs. Ernest L. Botkins.

FRAMED PICTURE OF THE LAST SUPPER AND OF GOLGATHA AND FRAMED PICTURE OF CHRIST ON TRIAL—Given by Rev. and Mrs. V.J. Spiekerman.

FRAMED PICTURE OF THE CRUXIFIXION—A Thankoffering given by Ronald Schnell.

CHURCH OFFICE FURNISHING (DESK)—Given in memory of Mrs. Meta Schreiner by Mr. and Mrs. Glenn Mossner, John and Sue Ann.

CHURCH OFFICE FURNISHING CHAIRS (4)—Given in memory of Mr. and Mrs. George Mossner and sister Helen by Oscar Mossner.

CHURCH OFFICE FURNISHING CHAIRS (2)—Given in memory of husband Adam Hohmann by Friedericka Hohmann.

CHURCH OFFICE FILING CABINET AND TABLE—An abiding gift given in honor of my 75th birthday and in memory of my husband Fred A. Miller and two sons Alvin F. Miller and Herman C. Miller by Mrs. Emma Miller.

SACRISTY SINGLE PEDESTAL DESK—A Thankoffering given by the Richard E. Haag family (A.A.L.).

SACRISTY SIDE CHAIRS (2)—Given in memory of Clarence and Vera Schluckbier by Mr. and Mrs. Darrell Bierlein, Cheryl and James, Mr. and Mrs. Paul Bergdolt and Steven, and Mr. and Mrs. Gerald Schluckbier and Jeffrey.

DRAPERY FOR PASTOR'S STUDY AND CHURCH OFFICE—Given in memory of Louisa Walter by Mr. and Mrs. Edwin Rodammer.

CRYROOM MIRROR—Given in memory of Tony Carl Bauer by Ruben Bauer, Donald Kischnick and Ronald Zanner.

CRYROOM SETTEE—Given in memory of Tony Carl Bauer by Carl and Leona Bauer, Danny, Susan and Karen.

CRYROOM SETTEE—Given in memory of John Richard Schluckebier who would have been a member of the 1971

confirmation class by his sponsors Erwin Zeilinger, LeRoy Schluckebier and Robert Krick.

THE CHURCH HYMNAL FUND—The following gifts and memorials were made to this fund:

A Thankoffering given by Sandra Hecht and Gary Hecht.

A Memorial given in memory of parents Mr. and Mrs. John Beyerlein and Mr. and Mrs. Carl Miller by Edward and Elsie Miller.

A Memorial given in memory of John Richard Schluckebier by Sandra Kay Bernreuter and Pamela Sue Bernreuter.

A Memorial given in memory of John Richard Schluckebier by Mr. and Mrs. Arthur Schluckebier and Mr. and Mrs. Robert Krick and family.

A Memorial given in memory of John Richard Schluckebier by the school children of St. Michael's Lutheran School and memorial wreaths.

A Memorial given in memory of Paul Hecht by the fourth grade class of St. Michael's Lutheran School.

A Memorial given in memory of Norman Hecht who died June 25, 1960 by Mrs. Martha Hecht, Mr. and Mrs. Wilbur Hecht and family and Mr. and Mrs. John Gannon (Marlene) and family.

A Memorial given in memory of Mrs. Rev. William Schoenow by the members of St. Michael's L.W.M.L.

A Thankoffering given on their 50th confirmation anniversary by the confirmation class of 1920.

An abiding gift given in honor of the 40th wedding anniversary of Mr. and Mrs. Clarence Kischnick by Mr. and Mrs. Ruben Mossner, Connie and Thomas, Mr. and Mrs. Carl Bauer, Danny, Susan and Karen and Mr. and Mrs. Donald Kischnick.

A Thankoffering given by the confirmation class of 1970.

An abiding gift given by the members of St. Michael's L.W.M.L. in honor of their 25th anniversary.

A Memorial given in memory of Kenneth E. Schiefer born Dec. 6, 1945 and passed away Oct. 20, 1970 by Grandpa and Grandma Schiefer.

A Memorial given in memory of John Richard Schluckebier by Mr. and Mrs. Ronald Hallman.

THE CHURCH CUSHIONED PEW FUND—The gifts and memorials given to this fund:

An abiding gift given in honor of the golden wedding anniversary of Mr. and Mrs. Adolph A. Hecht by friends and relatives as monetary wedding anniversary gifts.

An abiding gift given in honor of their silver wedding anniversary by Mr. and Mrs. Walter Bierlein Jr.

An abiding gift given in honor of their parents Mr. and Mrs. Clarence Palmreuter by Mr. and Mrs. Kenneth Palmreuter and family, Mr. and Mrs. John Voss and Esther, Mr.

and Mrs. Eugene Palmreuter and family, Mr. and Mrs. Richard Block and Jason, and Gary Palmreuter.

A Thankoffering given by Clarence Mossner.

A Memorial given in memory of their parents Mr. and Mrs. Adam Hohman and Mr. and Mrs. Justus Stiebing by Mr. and Mrs. Fred Hohman.

A Thankoffering given by Herman and Arthur Blank.

A Memorial given in memory of Edmund, Arthur, Walter and Clemence Loesel by Richard and Roland Loesel.

A Thankoffering given on their 40th confirmation anniversary by the confirmation class of 1930.

A Thankoffering given by Mr. and Mrs. Carl Hoerlein and family.

An abiding gift given in honor of their 50th wedding anniversary by Mr. and Mrs. Edwin J. Schiefer.

A Thankoffering given by Mr. and Mrs. Waldemar Keinath, Anthony and Steven.

A Memorial given in memory of John L. Enser by Mr. and Mrs. Arnold Enser and Mrs. Emma Enser.

A Thankoffering given by Weber Lumber and Millwork Inc.

A Bequest given by Testament by Matthew Weber.

A Memorial given in memory of Milda Keinath by Mr. and Mrs. Willaim Mossner.

A Thankoffering given by Elmer and Agnes Weber.

A Thankoffering given by Otto and Erna Stadler.

A Memorial given in memory of their parents Mr. and Mrs. J. George Hecht and Mr. and Mrs. John G. Schmidt by Mr. and Mrs. Adolph A. Hecht.

A Thankoffering given by Eugene M. Weber.

An abiding gift given by the members of the class of 1921 in honor of their 50th confirmation anniversary.

A Thankoffering given by Mr. and Mrs. William J. Bauer.

A Thankoffering given by Ruben G. and Alma Hecht.

A Thankoffering given by Mr. and Mrs. Raymond Keinath.

A Thankoffering given by Mr. and Mrs. Herb Bauer and family.

ONE LOUNGE CHAIR IN MULTIPURPOSE ROOM—A Thankoffering given by the members of St. Michael's Golden Age Group.

MULTIPURPOSE ROOM (14) FOLDING TABLES, (2) CADDIES AND (1) LOUNGE CHAIR—An abiding gift given in honor of their golden wedding anniversary by Mr. and Mrs. Carl Auernhamer and children and monetary anniversary gifts by friends and relatives.

MULTIPURPOSE ROOM PIANO—A Thankoffering given by Alma Huber.

and Mrs. James Doud and family.

A Thankoffering given by Mr. and Mrs. Charley Gey.

A Memorial given in memory of Mr. and Mrs. Fred Rodammer by Mr. and Mrs. Arnold Rodammer, Mr. and Mrs. Elmer Rodammer and Mr. and Mrs. Wilmar Rodammer.

A Thankoffering given by the Raymond Rodammer family.

A Memorial given in memory of John Richard Schluckebier by Mr. and Mrs. John Schluckebier, Sherri and Lisa.

A Thankoffering given by Weber-Bierlein wedding collection.

An abiding gift given by Mr. and Mrs. Elmer M. Buchinger in honor of their 50th wedding anniversary.

An abiding gift given in honor of the 50th wedding anniversary of Mr. and Mrs. Elmer Buchinger by Mr. and Mrs. Howard Bierlein, Mr. and Mrs. Howard Janson, Mr. and Mrs. Jack Buchinger and Mr. and Mrs. Robert Buchinger.

An abiding gift given in honor of their parents 40th wedding anniversary by the children of Mr. and Mrs. Alvin Schluckebier.

An abiding gift given by Mr. and Mrs. Alvin Schluckebier in honor of their 40th wedding anniversary.



Church Entrance Sign



Our Special Thanks . . .

Any building program, if done well, is difficult. . .and a successful one is always due to the guidance of Almighty God. . .and the hands of many dedicated people used by God to achieve His ends.

Such was certainly the case with the building of Saint Michael's Lutheran Church.

First, my personal thanks and appreciation to the members of Saint Michael's congregation, whose loyal support, prayers, cooperation and personal sacrifice made this new facility a reality.

Secondly, the entire Congregation joins in extending appreciation to the men of the Building Committee under the dedicated leadership of Mr. Carl Hoerlein, and to its predecessor, the Planning Committee, under the leadership of Mr. Louis Schoenow. These men, with great foresight and daring, proposed a facility which will serve beyond this generation. . .and this Congregation is grateful to them for their dedication and inspiration.

Thirdly, we must certainly express appreciation to the architect and to the builder. . .men who in their designing and their building did more than fulfill a contract. . .but in hundreds of ways continuously involved themselves and their unique and special skills in creating a structure reflecting true craftsmanship and beauty of design.

Fourthly, a church is a building filled with special meanings as it serves as an on-going witness to the world. We would like to express special appreciation to Dr. Carl Piepkorn, Dr. W. Harry Krieger, Mr. Francis Lichon and others, who helped the congregation develop a building with such meaning through their valuable suggestions and comments.

Transforming the meanings of scriptural truths into beautiful objects of metal, glass and stone is a special talent. Our appreciation to three such men, Les Lucas of the Zander Company, Mario Riccini of Empire Bronze and Crosby Willet of Willet Glass, for the beautiful interpretations and special efforts.

Our thanks also to Rummel Studios of Frankenmuth, to the staff of the Saginaw News and to Mr. Dale Wieck of Saginaw, who generously provided photographs of all stages of the project. Their contributions of hundreds of photographs are deeply appreciated and will be a treasured part of our parish history.

I would be remiss if I did not make special mention of Rudy Petzold, a friend of St. Michael's, who contributed many, many hours of his time helping to develop the many printed materials used in this project and for editing this booklet for us.

And finally. . .not unto us, not unto us, O Lord. . .but to Thee belongs all glory. We built to the glory of Thy Name. . .ours was the privilege to be used.

VICTOR SPIEKERMAN
Pastor