

Date: 2023-09-28T17:40:04  
 LightLab: Britebox Lab  
 Serial: LL030523  
 Operator: Micheal Kish  
 Sample ID: Blue Cheese

Method: LightLab HPLC  
 Test Type: Hemp Compliance  
 Moisture: 0.0%  
 Weight / Volume: 0.5 g  
 Solvent: 20 ml  
 Temperature: 33.4 °C  
 Cultivar: Queen Hemp  
 Cal Expiration: 2024-08-15T05:00:00

Notes: Premium Hemp Flower

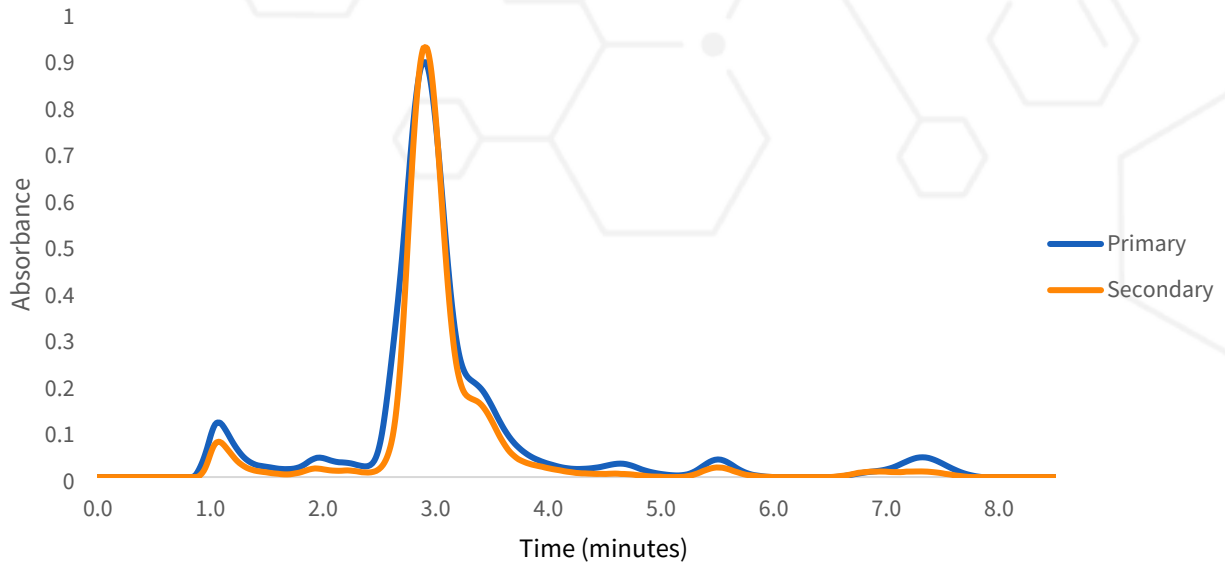


## Cannabinoid Profile

Analyte	%	LOQ
THC-A	10.501%	0.050
Δ9-THC	0.207%	0.050
CBD-A	n/a	--
CBD	n/a	--
CBG-A	n/a	--
CBG	n/a	--
CBN-A	n/a	--
CBN	n/a	--
CBC-A	n/a	--
CBC	n/a	--
Δ8-THC*	n/a	--
Δ10-THC	n/a	--
THCV-A	n/a	--
THCV	n/a	--
Δ9-THC-O	n/a	--
Δ8-THC-O	n/a	--
HHC	n/a	--
Δ9-THCP	n/a	--
Δ8-THCP	n/a	--
Terpenes	n/a	--
<b>Total THC</b>	<b>10.708%</b>	
<b>Total CBD</b>	<b>n/a</b>	
<b>Total Cannabinoids</b>	<b>n/a</b>	

ND = Not Detected; n/a = Not Analyzed; LOQ = Limit of Quantification;  
 Total THC = (0.877 x THC-A) + Δ9-THC; Total CBD = (0.877 x CBD-A) + CBD.  
 \* Δ8THC has lower precision and higher detection limit than other cannabinoids

# Chromatogram



9/28/2023

Approved

Date



Scan for Authenticity

The signatory confirms that the Operator has performed the sample preparation according to the LightLab User's Guide. This report is for quality assurance purposes only. These results relate only to the sample included on this report. Orange Photonics makes no claims as to the efficacy, safety, or risks associated with any detected or non-detected level of any compounds reported herein. Orange Photonics makes no claims regarding the adherence to sample preparation guidelines, by the operator, as outlined in the LightLab User's Guide.