

## Certificate of Analysis

Date:	2023-10-09T18:49:06	Method:	LightLab HPLC
LightLab:	Britebox Lab	Test Type:	Hemp Compliance
Serial:	LL030523	Moisture:	0.0%
Operator:	Micheal Kish	Weight / Volume:	0.508 g
Sample ID:	Blue Dream	Solvent:	20 ml
		Temperature:	27.3 °C
		Cultivar:	Natrual Aide Distributors
		Cal Expiration:	2024-08-15T05:00:00
Notes:	Premium HempProduct		

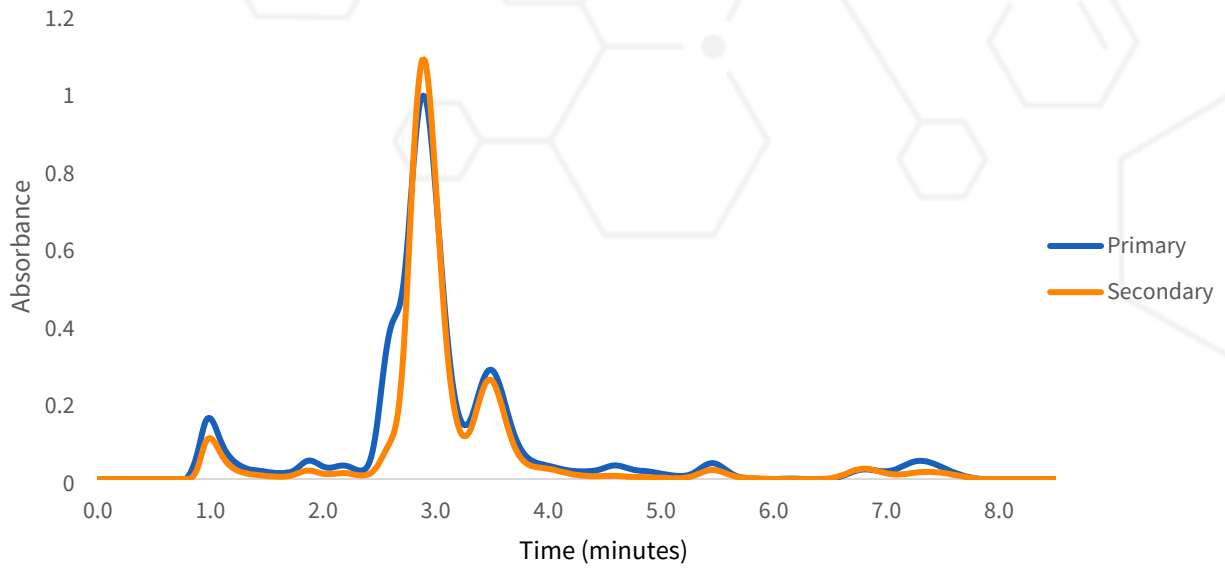
## Cannabinoid Profile

Analyte	%	LOQ
THC-A	0.49%	0.049
Δ9-THC	0.49%	0.049
CBD-A	n/a	--
CBD	n/a	--
CBG-A	n/a	--
CBG	n/a	--
CBN-A	n/a	--
CBN	n/a	--
CBC-A	n/a	--
CBC	n/a	--
Δ8-THC*	n/a	--
Δ10-THC	n/a	--
THCV-A	n/a	--
THCV	n/a	--
Δ9-THC-O	n/a	--
Δ8-THC-O	n/a	--
HHC	n/a	--
Δ9-THCP	n/a	--
Δ8-THCP	n/a	--
Terpenes	n/a	--
<b>Total THC</b>	<b>0.92%</b>	
<b>Total CBD</b>	<b>n/a</b>	
<b>Total Cannabinoids</b>	<b>n/a</b>	

ND = Not Detected; n/a = Not Analyzed; LOQ = Limit of Quantification;  
 Total THC = (0.877 x THC-A) + Δ9-THC; Total CBD = (0.877 x CBD-A) + CBD.

\* Δ8THC has lower precision and higher detection limit than other cannabinoids

# Chromatogram



Approved

10/9/2023

Date



Scan for Authenticity

The signatory confirms that the Operator has performed the sample preparation according to the LightLab User's Guide. This report is for quality assurance purposes only. These results relate only to the sample included on this report. Orange Photonics makes no claims as to the efficacy, safety, or risks associated with any detected or non-detected level of any compounds reported herein. Orange Photonics makes no claims regarding the adherence to sample preparation guidelines, by the operator, as outlined in the LightLab User's Guide.