



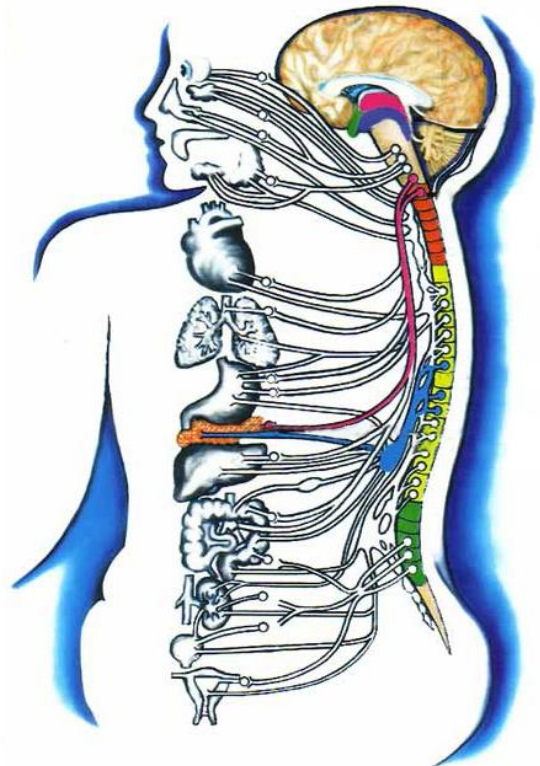
## Knowledge from the Beginning

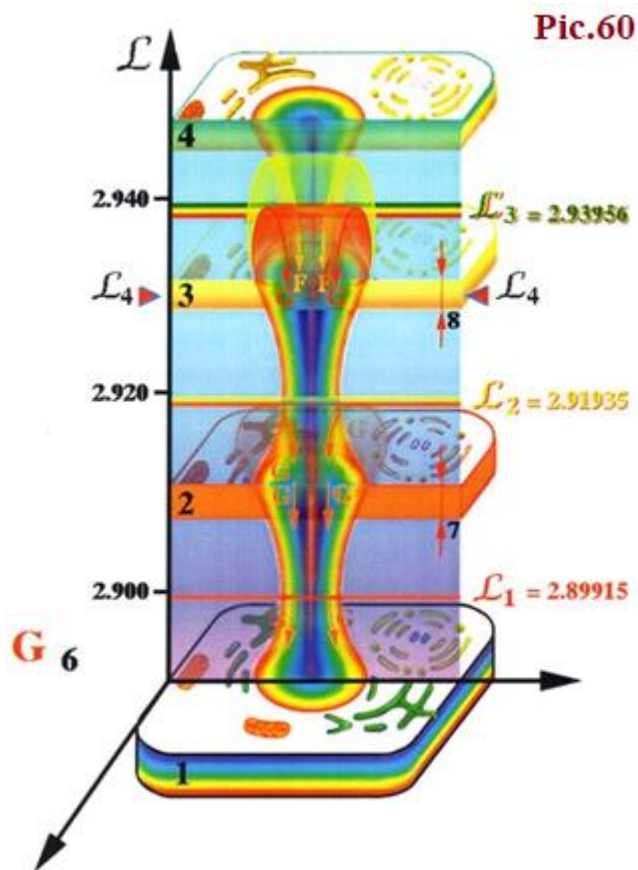
# Cancer as a form of cell existence and the SvetL Complex, as a prevention (correction) of this condition

**Cancer is a cell condition in the absence of communication with the Brain.**

**The brain, as the highest state of charge equivalent structures, relying on lower organizations (biostructures), has a certain corridor of direct control of the living cell of the biostructure.**

In accordance with **the laws of space communication** (you can see N.V. Levashov – "Essence and Mind" and A.M. Khatybov – "Fundamentals of Celestial Mechanics"), **the magnetic pulse produced by the brain, and received by it back as a confirmation** (and determining the dimensionality of the charge in neutron space), has a strictly consistent organization for each living cell. The magnetic pulse is generated by the Brain from the basic series of octaves of k-structures: **96, 72, 68, 66, 64, 62, 54, 48, 32, 28, 24, 21, 16**. Octaves **66, 68, 72** determine the genotype, and the Brain works with only one value out of three.





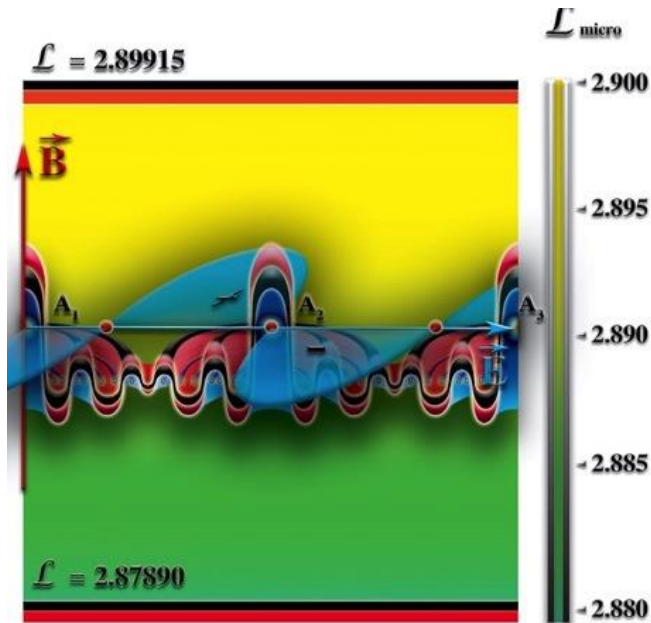
In addition, each value of this impulse can be decomposed into a matrix  $64 * 64$ , which **determines the entire set of its values. The impulse must have a certain potential**, and if this potential is below a certain standard value (see handbook), **the Brain quantizes the charge by the equivalent of temperature, then by the angle of sliding, and if there is no confirmation, the cell is perceived as dead, it does not exist for the Brain.** The limit of quantization is by temperature (step  $0.2\text{ }^{\circ}\text{C}$ ) – up to  $43.6\text{ }^{\circ}\text{C}$ , by the angle of sliding –  $21.5^{\circ}$  **Any biostructures must be subordinated under normal conditions to this mode of**

**operation of the Brain.** However, the living cell (biostructure) is organized in neutron space, and the space difference imposes a number of restrictions on the normal operation of a living cell. The concept of neutron space is introduced to denote immaterial structures, or non-inertial mass. In science, this state is designated as "soul" (in N. Levashov – in his works – as the Essence). But a light cloud that rises after death is also a material mass.

### 1. Influence of the external environment

Changes in albedo, for example, atmospheric phenomena – rain, snow, wind, drought – entail **unforeseen distortions of the electrical potentials of gravitational frequencies and potentials of magnetic pulses**, causing involuntary changes in cell temperature and sliding angle.

External stimuli – radiation, the action of chemical stimuli, the background effect of the form (for example, place of residence) – lead to a restructuring of frequencies and, as a result, distortion of the electrical potentials of a living cell. **There are limits to the existence of both gravitational potentials and electrical potentials. When you go beyond these limits, information exchange is distorted.** The Complex "SvetL", "tuned" to its owner, interacting with his Brain at the level of neutron space, always equalizes (balances) these unforeseen or negative states



and distortions. As a rule, these distortions lead to the appearance of a different type of cell and the convolution of the code embedded in each cell. The genetic code is transformed into any other structure that can exist in conditions of stable external influence. **This is not yet a bacterium that independently, like a parasite, uses the electrical potentials of a living cell, but the cell itself.** However, given the difference in the standard of magnetic pulse in different spaces, a living cell

has a wider range of its existence, not coordinating strictly on the time and space of the albedo. This means that the Brain is forced to adapt to the new structure within its standard. **To prevent the avalanche-like formation of "foreign" cells, the Brain forms an integral corridor – 50,000 cells on a solar day, which, according to the albedo of the Brain, must be removed from the control area of the Brain.** That is, if 10,000 such structures are formed, they are normally removed from the communication area of the Brain and **are not subject** to processing and control by a magnetic pulse, **unless these cells have passed into another form of existence** – bacterial, or autonomous. When cells are removed from the control area, everything is removed from them, and they are excreted (they will no longer be in the body).

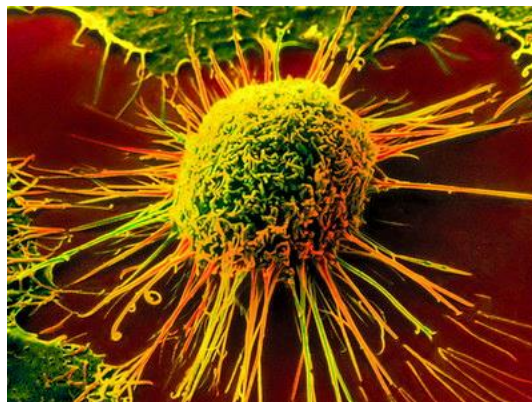
On the other hand, the number of new cells with altered albedo can exceed 50,000, and then the **Brain** produces screenings (a weed out), in which less "harmful" cells remain and receive a temporary connection with the Brain via a magnetic pulse, and the rest **are "turned off"**. However, this is where **the Trojan Horse** is located: the abandoned cells narrow the ejection range, closing the channels through which these cells can be destroyed. A decrease in the figure from **50,000 to 45,000** leads to an unlimited growth of "temporarily connected cells," which are called "CANCER." The Complex "SvetL," with constant "scanning" of

the entire human body (at the cellular level), as well as in interaction with the Brain, "removes" all the negative points in order for the Brain to independently cope with the above task. This is the "prevention" of the appearance of "cancerous formations." The process of **"destruction" of already formed** (for one reason or another) cancer cells and, accordingly, their mass colonies (the so-called Cancerous tumors) by the "SvetL" Complex (its Programs) will be described in detail in other works of the series of articles "Knowledge from the Beginning."

The brain is forced to rearrange potentials and charge equivalents for new structures, which in themselves can form a "test" of the Brain itself.

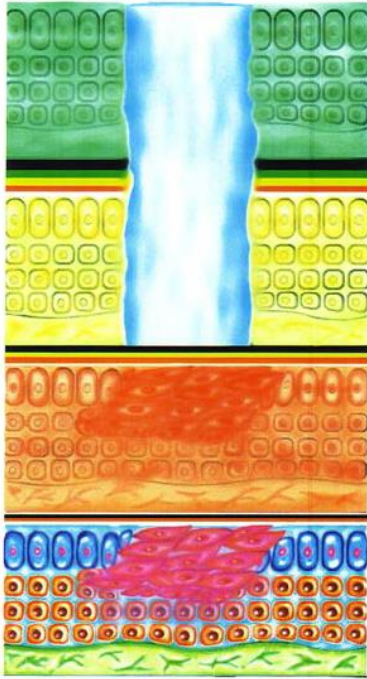
## 2. Internal factors

The altered structure of a living cell forms an additional intermediate environment for the existence of a colony of new cells resistant to external influences. This internal environment has the ability, due to the radiation of "Kirlian," to change the charge equivalent of a living cell both in the direction of its **increase**, provoking the work of the Brain to reduce the electrical potential, and in the direction of **decrease**, issuing information about the additional "feeding," or recharge, of the living cell. This recharge is used by the new colony for its own life support. All drugs, the action of which is based on the suppression of the electrical potential of colonies of foreign cells, provoke the Brain to increase the electrical potential of living cells, and this potential is distributed in the colony itself. **Any effect, ranging from chemotherapy to laser "burning" leads to an increase in the potentials for a living cell** (manifested in an increase in temperature, a decrease in reaction time – and hence the life of the **cell**). N. Levashov repeatedly wrote and spoke about this (see "The Last Appeal to Humanity").



Changed conditions of neutron space lead to a change in the functioning of the Brain according to reference parameters. The right- and left-helix structures of the DNA of a living cell can no longer be distinguished at the limit values of the electrical potential and are perceived by the Brain as a normal living cell. But this means that each cell receives and has its own control structure. Thus, the Brain also **receives a virus**, that is, a structure that has an inverse albedo relative to the normal communication matrix.





The appearance of the virus entails a decrease in the initial charge equivalent without changing the reference values, that is, already in the Brain, such parameters as the angle of sliding and humidity fall. When the known limit values are reached, the **Brain can no longer control, and will strive to get rid of any cell - living or colony**, but this does not correct its condition, since viruses, reducing the charge equivalent of the Brain, **lead to its destruction**. Unlike colonies, where cells already have a single structure for removing electrical potential, living cells remain an autonomous formation in this environment and quickly transmute, transforming into new structures. All the above processes are **"monitored" by the "SvetL" Program** (during the operation of the Complex), "helping" the Brain to

make the correct analysis when controlling cells and preventing such situations, and in some cases accelerating the processes associated with the "withdrawal" of already formed viruses and dead cells from the body.

Tables of frequencies of formation of colonies can be found in the reference book on frequencies (monograph by A. Khatybov "Cold nuclear fusion"). The elimination of colonies is carried out by the method of superposition of frequencies, but the Brain, having no cells that, nevertheless, receive a magnetic pulse, creates new cells of the same structure according to the connection of the virus with the Brain. That is, even if the colony of cells is destroyed, the Brain re-creates it, and not necessarily where it was before. This function of the Brain is automatic and cannot be corrected from the proton space, that is, the environment of the material existence of the cell. This correction is made by the **SvetL Program, which works only for the owner of the Complex**. All this is well described by N. Levashov (see "The Last Appeal to Humanity", "On Essence, Reason and much more") and A. Khatybov ("Instruction on Bath Business", Appendix 1).

**In the proton (material) medium there are no and cannot be drugs that affect the intangible environment.** This was taken into account **when creating the SvetL Complex and its Programs**. Knowing the frequencies that created the "aura" around autonomous cells, it is possible to develop devices for eliminating the "aura" (but this is a separate topic for reflection). Surgical operations, as a rule, do not lead to success, since any cell, and autonomous too, is, first of all, in neutron space, but with knowledge of horse literacy you will not look there.

09.10.2013



**Russian Scientific and Technical Society (RSTS)**

*F. Shkrudnev*

*To be continued...*