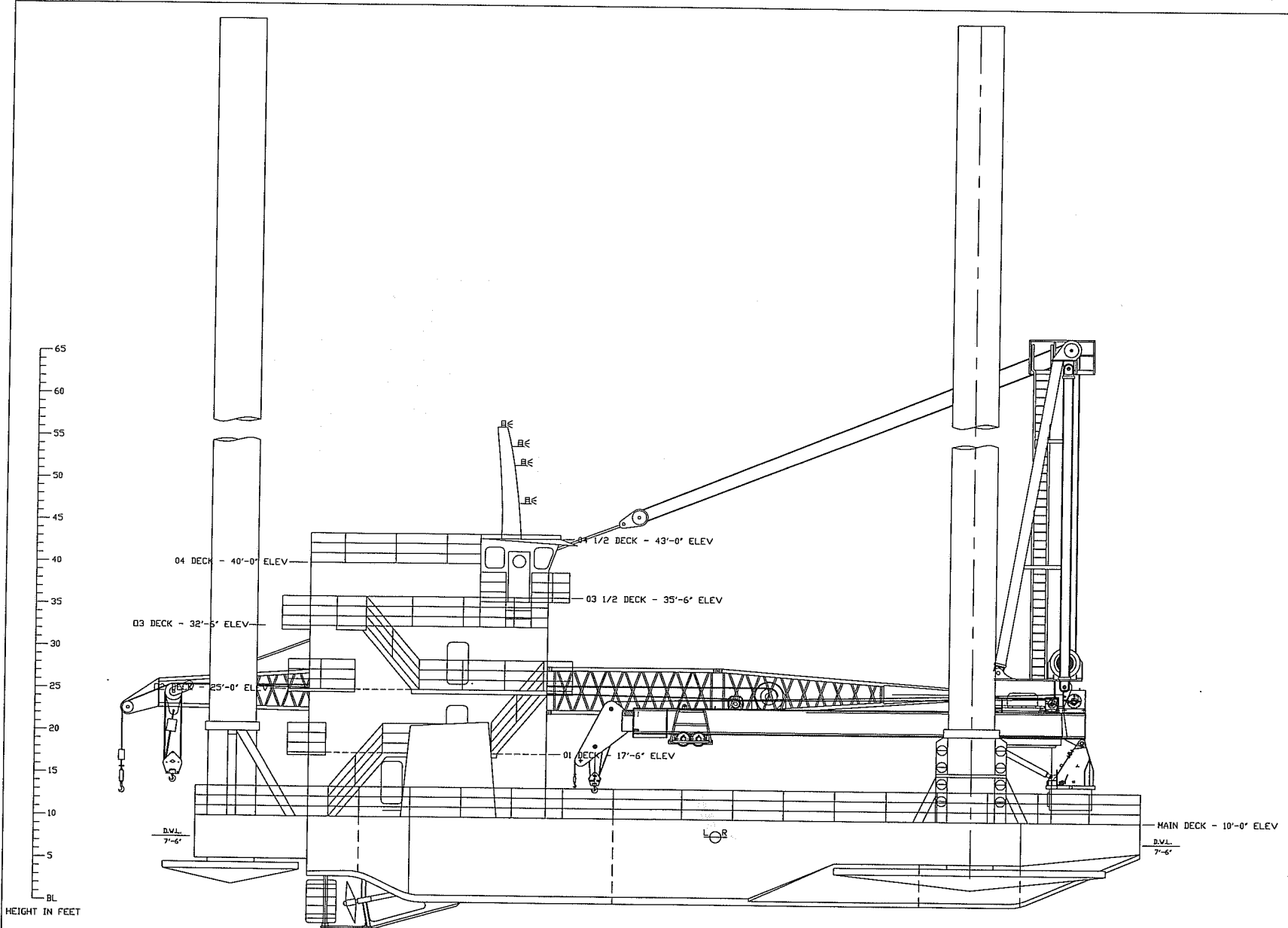


# OFFSHORE MARINE CONTRACTORS INC. - LIFTBOAT SPECIFICATIONS

## OLIVIA GRACE

### CLASS 200

GENERAL		JACKING	
EMAIL	LBOLVIAGRACE200@GMAIL.COM	MAX WORKING WATER DEPTH	160'
TELEPHONE - CAPTAIN #1	985-772-6659	MIN WORKING WATER DEPTH	9'
TELEPHONE - CAPTAIN #2	985-772-3277	MAX HEIGHT OF DECK ABOVE MUD LINE (MINUS PENETRATION)	151
TELEPHONE - VIP #1	985-772-6565	MAX SEA CONDITIONS (JACKING UP OR DOWN)	5'
TELEPHONE - VIP #2	985-772-6564	JACKING SPEED	8' / MIN
OFFICIAL NUMBER	1215002	TOTAL JACKS	3
IMO	8770388	TOTAL JACKING RATING	1,408 LT
CALL SIGN	WDE6543	TOTAL HOLDING RATING	914 LT
FLAG PORT	NEW ORLEANS, LA	<b>LEGS</b>	
YEAR DELIVERED	2008	QUANTITY	3
BUILDER	MIF	LEG LENGTH	200'
<b>DIMENSIONS</b>		LEG DIAMETER	66"
LENGTH (OVERALL)	115'	SIZE	1"
WIDTH (OVERALL)	74'	LEG TOWER HEIGHT	10'
LENGTH (BARGE ONLY)	111' 3"	WALL THICKNESS	0.87"
WIDTH (BARGE ONLY)	66' 6"	MATERIAL	ASTM - A53
DEPTH	10'	<b>LIVING QUARTERS</b>	
DESIGN DRAFT	7.65'	CREW ACCOMMODATIONS	7
<b>HULL CHARACTERISTICS</b>		NON-CREW ACCOMMODATIONS INCLUDING VIP	36
TONNAGE	UNDER 200 TONS	TOTAL ACCOMMODATIONS	43
GROSS TONNAGE	196 TONS	VIP ACCOMMODATIONS	2
NET TONNAGE	133 TONS	CENTRAL A/C & HEATING	YES
CENTRAL DECK AREA	4,000 SQ FT	CLERK OFFICE	0
SIDE DECK AREA	500 SQ FT	LOUNGE	YES
USABLE DECK AREA	4,500 SQ FT	HEADS -- ALL LEVELS	YES
MAXIMUM DECK CARGO LOAD AFLOAT	640,000 LBS	GALLEY SEATS	24
<b>PROPULSION</b>		WASHERS / DRYERS	3 / 3
<b>MAIN ENGINE</b>		<b>ELECTRONICS / NAVIGATING</b>	
NUMBER	2	VHF RADIO	YES
MAKE	CATERPILLAR	LOUD HAILER	YES
MODEL	C 18	RADAR(S)	YES
HORSEPOWER	720	FATHOMETER	YES
REDUCTION GEAR	TWIN DISC 5:1	AIS	YES
<b>GENERATORS</b>		GPS/DGPS	YES
NUMBER	2	TILT ALARM	YES
MAKE	CATERPILLAR	COMPASS	YES
MODEL	C 3304	V-SAT COMMUNICATION	YES
GENERATOR OUTPUT	180 KW	SSB	NO
AUX GENSET EQUIPPED	SAME	GMDSS	NO
<b>CRANES</b>		GAILTRONICS SYSTEM	NO
<b>PRIMARY CRANE</b>		<b>CAPACITIES</b>	
MAKE	TECH CRANE	FUEL	9,730 GAL
MODEL	L 200	LUBE OIL	118 GAL
LOAD RATING	125 TON	HYDRAULIC OIL	1,594 GAL
BOOM TYPE	LATTICE	SUBMERSIBLE PUMP	150 GPM X2
BOOM LENGTH	100'	WATERMAKER EQUIPPED	NO
CRANE INSTALLATION TYPE	PEDESTAL	POTABLE WATER	15,194 GAL
HEEL PIN HEIGHT	12'	<b>REGULATORY CLASSIFICATION</b>	
<b>AUXILLIARY CRANE</b>		USCG 46CFR SUBCHAPTER "L"	YES
MAKE	EBI	LLOYDS LOAD LINE	YES
MODEL	TC - 60	<b>SPECIAL FEATURES</b>	
LOAD RATING	30 TON	ZERO DISCHARGE CAPABILITY	YES
BOOM TYPE	TELESCOPING	MARINE SEWAGE TREATMENT SYSTEM	SEAHORSE
BOOM LENGTH	100'	AIR COMPRESSOR	2 - 80 GAL
CRANE INSTALLATION TYPE	PEDESTAL	CANTILEVER PINS	NO
HEEL PIN HEIGHT	10'	<b>PERFORMANCE</b>	
<b>PADS</b>		ESTIMATED SPEED	6 KTS
PAD LENGTH	32'	MAX SEA HEIGHT	5'
PAD WIDTH	16'	<b>FUEL CONSUMPTION</b>	
PAD DEPTH	2' 6"	MAIN ENGINE	40 GAL / HR
PAD LOADING	572 LT	GENERATOR	3 GAL / HR
DECK LOADING	388 LBS / SQ FT	PRIMARY CRANE	14 GAL / HR
		AUX CRANE	5 GAL / HR
		<b>CRUISING</b>	
		STAND BY	3 GAL / HR
		RUNNING CRANES	5 GAL / HR
		UNDERWAY	40 GAL / HR



**GENERAL INFORMATION**

HULL LENGTH	111'-3"
HULL WIDTH	66'-6"
HULL DEPTH	10'-0"
LENGTH OVERALL	115'-0"
WIDTH OVERALL	74'-0"
FOOTING LENGTH	32'-0"
FOOTING WIDTH	16'-0"
FOOTING DEPTH	2'-6"
LEG LENGTH OVERALL	200'-0"
LEG DIAMETER	66"
LEG THICKNESS	1" / 3/4"
LEG MATERIAL	API SL-X65
JACKS PER LEG	QTY EIGHT
JACKING RATING / JACK	65.75 S-TONS
HOLDING RATING / JACK	87.67 S-TONS
JACKING RATING / LEG	526.0 S-TONS
HOLDING RATING / LEG	701.3 S-TONS
TOTAL JACKS	QTY 24
TOTAL JACKING RATING	1578.0 S-TONS
TOTAL HOLDING RATING	2104.0 S-TONS
FUEL OIL CAPACITY	9,730 GAL
POTABLE WATER CAPACITY	15,194 GAL
JACKING HYDRAULIC OIL	1,594 GAL
CRANE HYDRAULIC OIL	789 GAL
ACCOMMODATION CREW	7 MEN
ACCOMMODATION VIP	2 MAN
ACCOMMODATION PACS	34 MEN
ACCOMMODATION TOTAL	43 MEN

M/V A.J. BOURG CONRAD HULL NO. C-762

**REVISIONS**

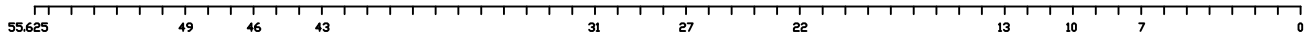
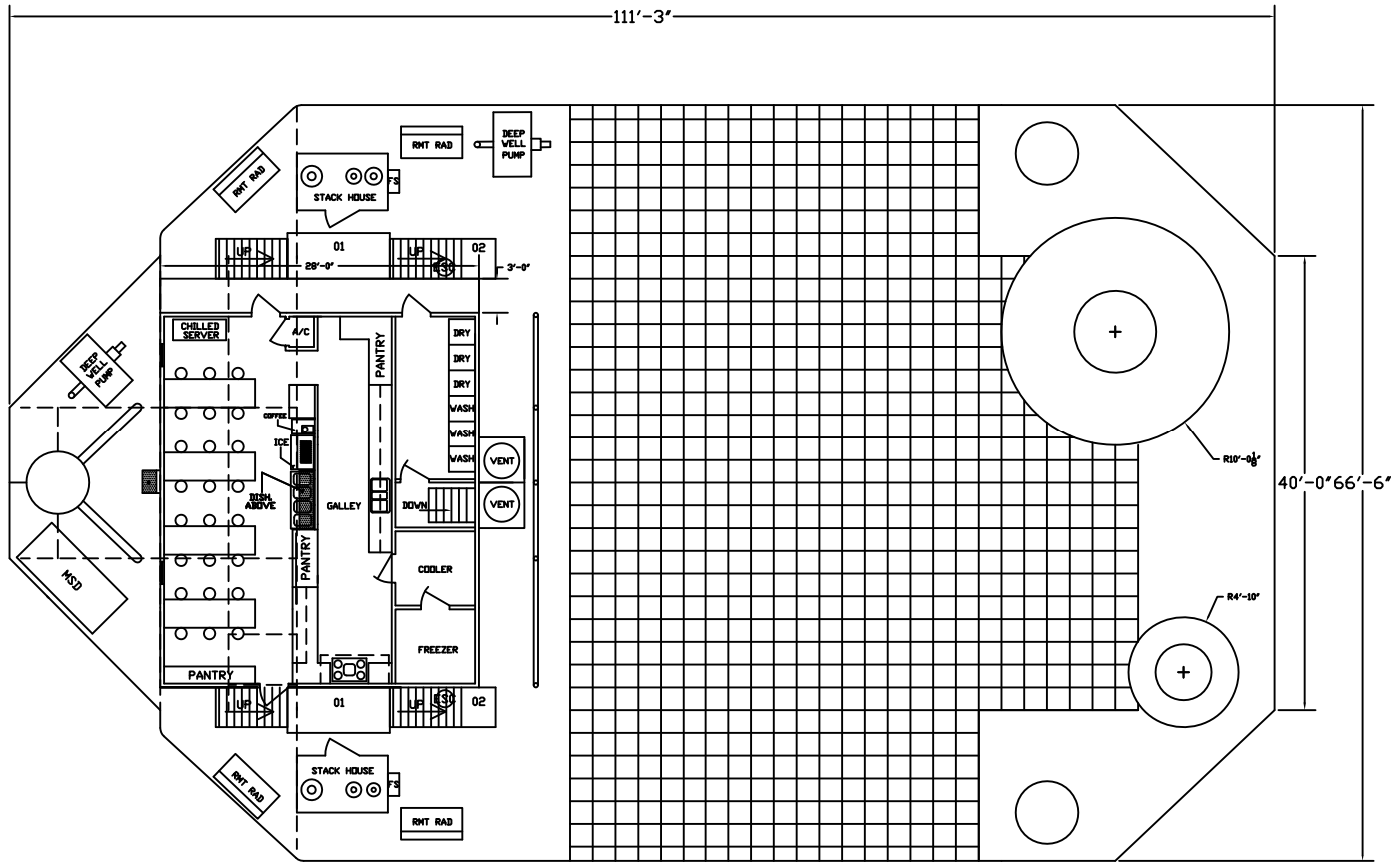
DYNAMICS MARINE, INC.  
225 MONSANTO ST., LULING, LA. 70070  
504-785-2118

CONRAD SHIPYARD, L.L.C.

OFFSHORE MARINE CONTRACTORS, INC.  
CLASS 200 LIFTBOAT  
OUTBOARD PROFILE

DATE: 25SEP06 APPV:  
BY: GT NO: GA-01

**OUTBOARD PROFILE**  
SCALE 3/16" = 1'-0"



GENERAL ARRANGEMENT MAIN DECK


SCALE 3/16" = 1'-0"

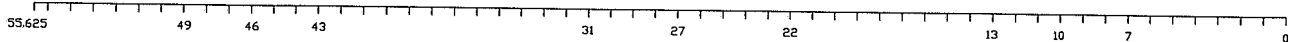
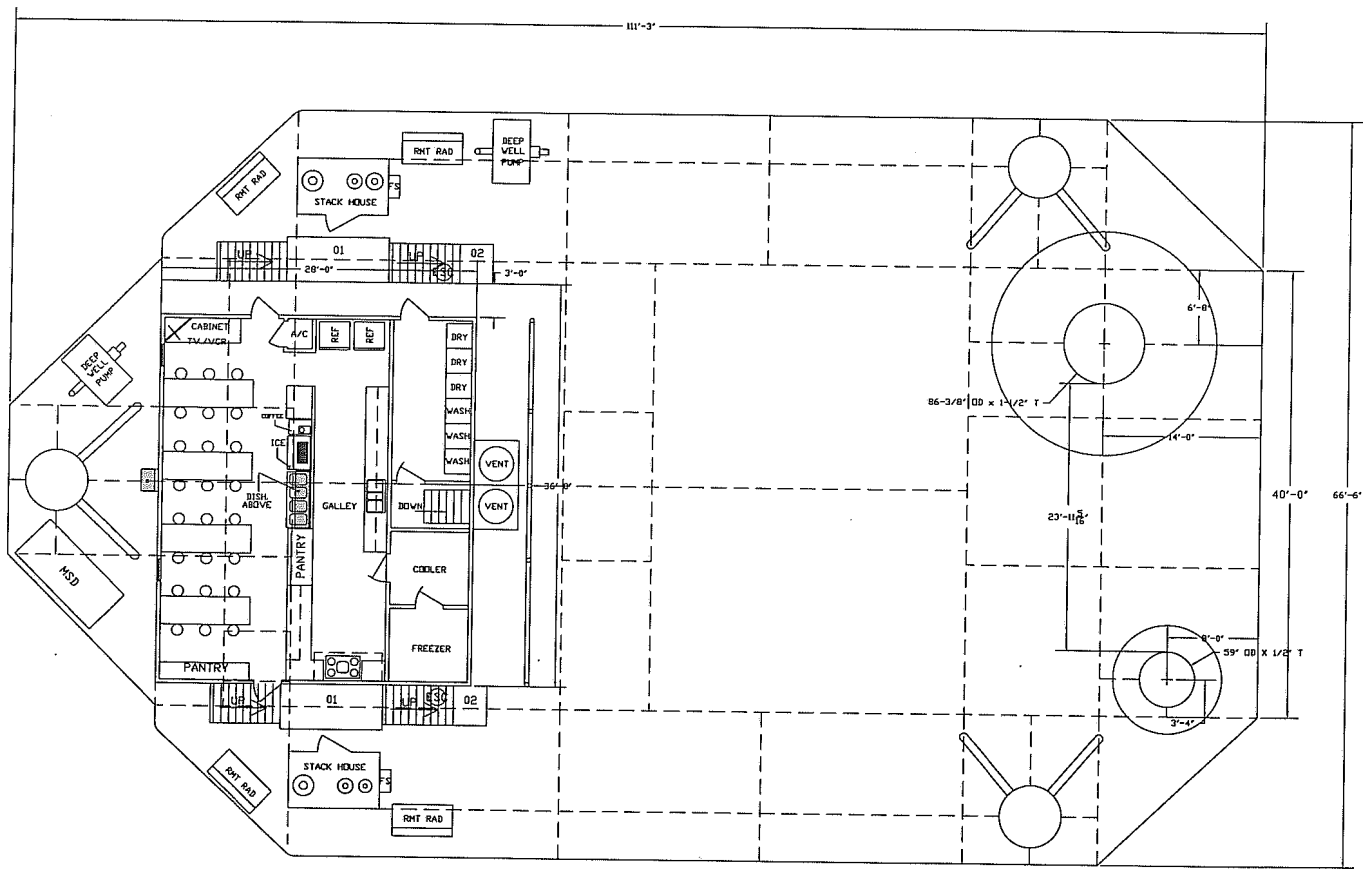
REVISIONS

DYNAMICS MARINE, INC.  
2483 LITTLE LANE - NE, WESSON, MS 39191  
601-695-4363

MARINE INDUSTRIAL FABRICATION

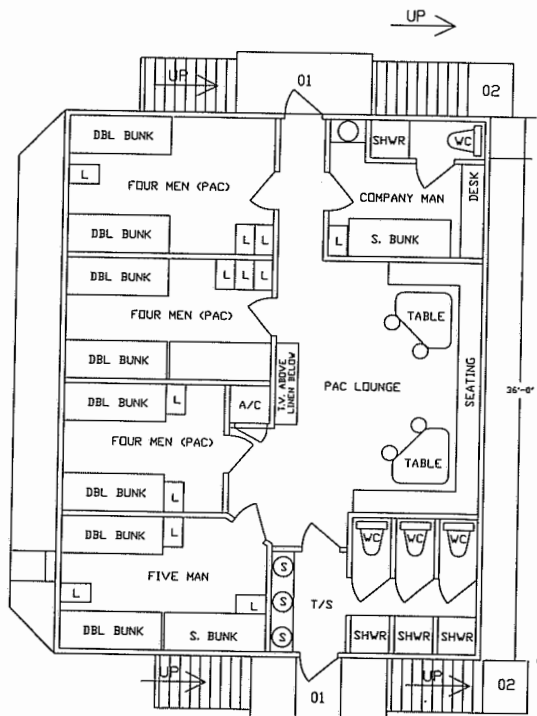
OFFSHORE MARINE CONTRACTORS, INC.  
CLASS 200 LIFTBOAT  
GENERAL ARRANGEMENT MAIN DECK

DATE: 08JUL08	APPV:
BY: GT	NO: GA-03 



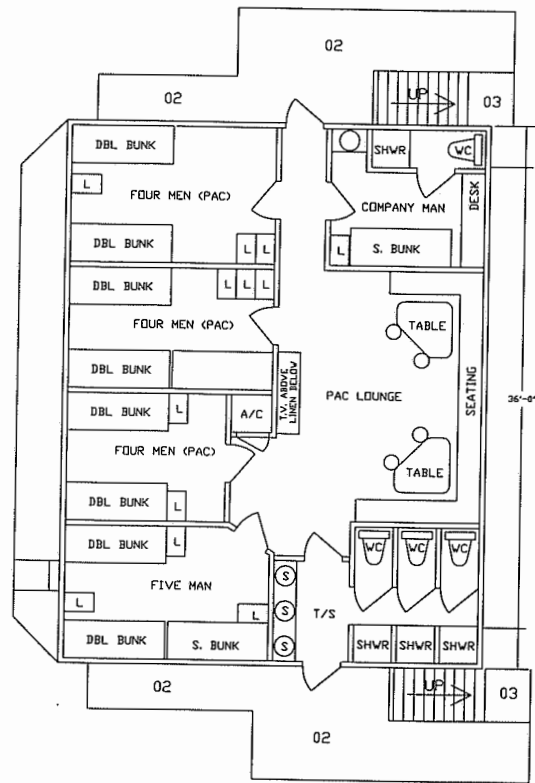
GENERAL ARRANGEMENT MAIN DECK  
SCALE 3/16" = 1'-0"

M/V A.J. BOURG, CONRAD HULL NO. C-762	
REVISIONS	
DYNAMICS MARINE, INC. 225 MONSANTO ST., LULING, LA. 70070 504-785-2118	
CONRAD SHIPYARDS, INC.	
OFFSHORE MARINE CONTRACTORS, INC. CLASS 200 LIFTBOAT GENERAL ARRANGEMENT MAIN DECK	
DATE: 25SEP06	APPV:
BY: GT	NO: GA-03



GENERAL ARRANGEMENT 01 LEVEL

SCALE 1/4" = 1'-0"



GENERAL ARRANGEMENT 02 LEVEL

SCALE 1/4" = 1'-0"

M/V A.J. BOURG, CONRAD HULL NO. C-762

REVISIONS

DYNAMICS MARINE, INC.  
225 MONSANTO ST., LULING, LA. 70070  
504-785-2118

CONRAD SHIPYARDS, INC.

OFFSHORE MARINE CONTRACTORS, INC.

CLASS 200 LIFTBOAT

GENERAL ARRANGEMENT 01 AND 02 DECKS

DATE: 23JUL01 APPV:

BY: GILLY NO: GA-04

**F60-70 Load Chart**

<i>Reach</i> (ft.)	<i>Boom Angle</i> (deg.)	<i>Dynamic Load</i> <i>Line</i> (lbs.)	<i>Static Load</i> <i>Line</i> (lbs.)	<i>Reach</i> (ft.)	<i>Boom Angle</i> (deg.)	<i>Dynamic Load</i> <i>Line</i> (lbs.)	<i>Static Load</i> <i>Line</i> (lbs.)
10	80	41350	62725*	45	48.5	13450	20875
15	76	34850	52975*	50	43	11850	18475
20	72	28350	43225	55	37	10500	16450
25	67.5	23500	35950	60	30	9400	14800
30	63	20300	31150	65	20	8450	13375
35	58.5	18050	27770	70	0	7650	12175
40	54	15550	24025				

*(\*) Capacity will be limited by 4 part reeving 50,840 lbs*

Maximum Overturning Moment (ft.-lbs.)	2,367,400
Corresponding Axial Force (lbs.)	56,440
Maximum Axial Force (lbs.)	157,530
Corresponding Moment (ft.-lbs.)	1,402,900
Basic Crane Weight (lbs.)	29,292

*In accordance with API-2C, values shown are actual hook load (weight of block and hook excluded).  
 Load line block weight is 1000 lbs.  
 Load line (4 part line): 3/4" Dyform 18; 64,800 lbs. breaking strength; 12,960 lbs. working strength.  
 Fast line block weight is 110 lbs.  
 Fast line (1 part line): 5/8" Dyform 18; 45,400 lbs. breaking strength; 9,080 lbs. working strength.  
 Static load = 1.5 x dynamic load  
 Pedestal reactions are based on three times the dynamic load plus the dead load.*

**BOOM:**

- Single box, 100% seal welded, double tapered boom
- Boom length: 70 ft

**PEDESTAL:**

- Standard - Height: 30"
- 100% sealed upper turret.
- Material: ASTM A500 Gr. 50
- Diameter - 48" OD with 45-degree bevel.
- Wall thickness: 5/8"
- The crane pedestal will incorporate a reinforced manway 18" I.D.

**HYDRAULIC BOOM LIFT CYLINDERS:**

- (3) 7X80 hydraulic cylinder is manufactured using standard components.
- Cylinder tube: High tensile DOM tubing, 7" bore.
- Steel Chrome Plated Cylinder rod.
- 4.5" IHCP rods
- Standard Parker seals.
- Field repairable.
- Counterbalance (holding) valve.
- External sun counterbalance valves, one on each cylinder.
- Spring to neutral control valve handles. As the lever is returned to neutral position, the load holding valve will lock until positive pressure is applied to lower the boom.
- Number of cylinders: 3
- Cylinder boot (bellows)

**LOAD LINE WINCH:**

8.2500					
Techcrane International, Inc.					
Crane Model		Job Number		Serial Number	
L200-100		1095		L200100T748	
Offshore Marine Olivia Grace					
Installation type: Vessel Mount No List No Trim					
Reach Radius (Feet)	Boom Angle (Deg)	On Board Lift (Pounds)	Off Board Lift (Pounds)	Aux. Hoist Lift (Pounds)	Personnel Rating Lift (Pounds)
20	82	250000	192000	10000	3300
25	79	250000	186000	10000	3300
30	76	235000	155500	10000	3300
35	73	200000	132166	10000	3300
40	70	173400	114433	10000	3300
45	67	152700	100633	10000	3300
50	64	136200	89633	10000	3300
55	60	122600	80566	10000	3300
60	57	111390	73093	10000	3300
65	54	101855	66736	10000	3300
70	50	93676	61284	10000	3300
75	46	86586	56557	10000	3300
80	42	80383	52422	10000	3300
85	37	74910	48773	10000	3300
90	32	70045	45530	10000	3300
95	26	65692	42628	10000	3300
100	0	61774	40016	10000	3300
108	0			10000	3300
Load line wire rope: 1.25" Dyform 34L Breaking strength: 196400 lbs Working strength: 39280 lbs Weight of travel block: 3900 lbs Max. hook speed: 30 ft/min			Aux. line wire rope: 3/4" Dyform 18 Breaking strength: 64800 lbs Working strength: 12960 lbs Weight of overhaul ball: 210 lbs Max. hook speed: 80 ft/min		
TECHCRANE INTERNATIONAL 17639 HARD HAT DRIVE COVINGTON, LOUISIANA 70435 U.S.A. BUS: 985-871-0056   FAX: 985-871-0065   E-MAIL: sales@techcraneglobal.com					

17.2500

J  
H  
G  
F  
E  
D  
C  
B  
A

J  
H  
G  
F  
E  
D  
C  
B  
A

NOTES:  
1. MATERIAL: 1/16" THICK ENGRAVABLE MATERIAL.  
2. COLOR: WHITE WITH BLACK NOMENCLATURE & LINEWORK.  
3. APPLY DOUBLE BACK ADHESIVE TAPE TO ENTIRE BACKSIDE.  
4. FRONT EDGES TO BE SLIGHTLY BEVELED.

<b>MATERIAL:</b> See Notes	<b>QTY:</b> 1 Per Crane
<b>PHONE (985) 871-0056</b>	
<b>Techcrane Global Corporation</b>	
<b>17639 HARD HAT DR. COVINGTON, LA. 70435 USA</b>	
API LOAD AND INFO CHART TEMPLATE	

TOLERANCE UNLESS OTHERWISE SPECIFIED	
.X	±.03"
.XX	±.015"
.XXX	±.0015"
.XXXX	±.0005"
X/X	±1/32"
DIMENSIONS IN INCHES [ ] INDICATES MILLIMETERS	

<b>PART NO:</b>	INFORMATION CONTAINED HEREON IS CONFIDENTIAL AND TRADE SECRET. DO NOT DISCLOSE, USE OR REPRODUCE WITHOUT PRIOR WRITTEN APPROVAL FROM TECHCRANE GLOBAL CORPORATION
<b>FILE NAME:</b>	

<b>DRAWN BY:</b> D.SHAD	<b>DATE:</b> 5/26/07
<b>DESIGN BY:</b> D.SHAD	<b>SCALE:</b> None <b>SHT:</b> 1 of 1
<b>APP'D BY:</b>	<b>DWG. VER:</b> 2.0

1 2 3 4 5 6 7 8 9 10 11 12 13