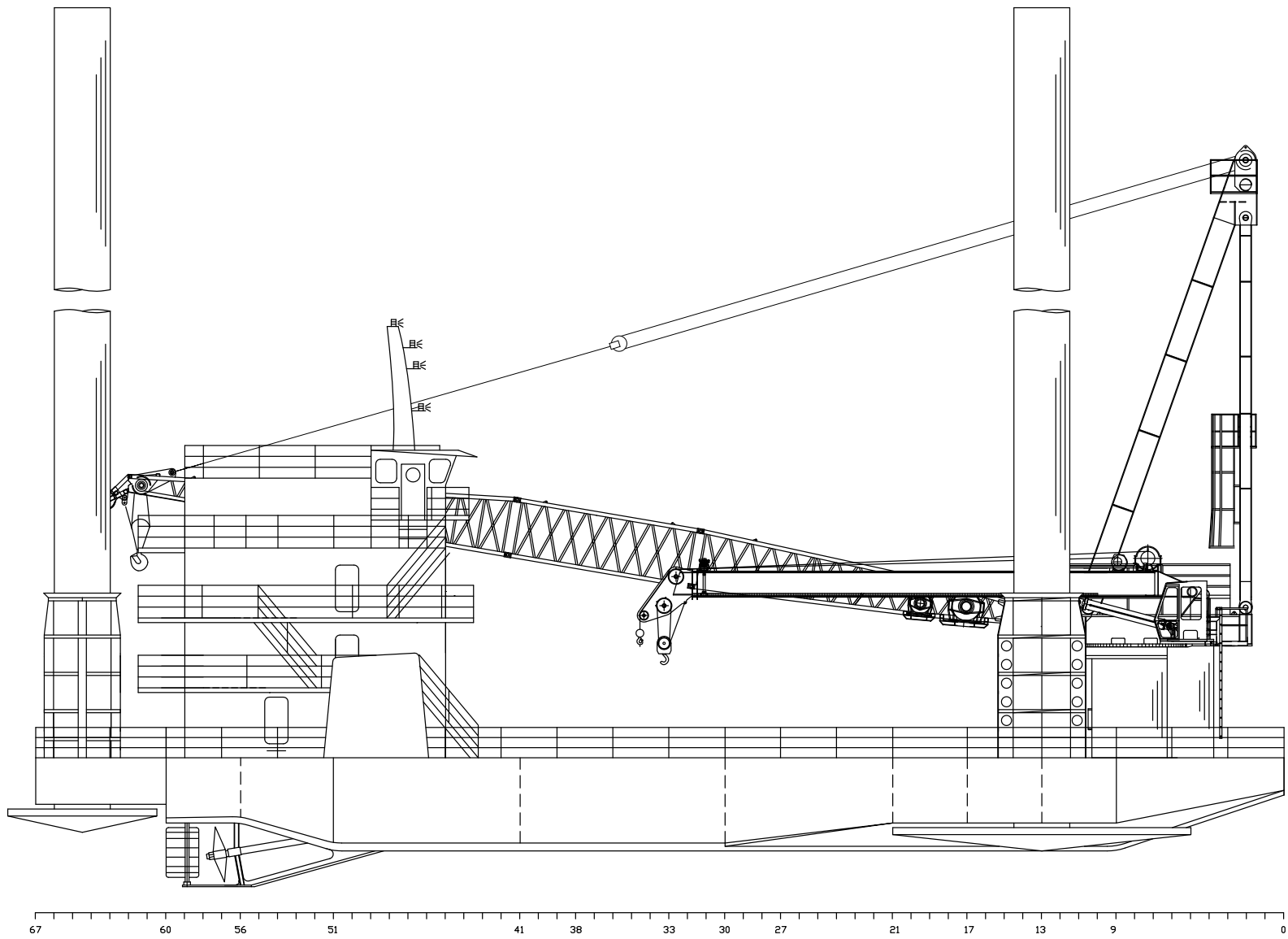


OFFSHORE MARINE CONTRACTORS INC. - LIFTBOAT SPECIFICATIONS

LACIE EYMARD

CLASS 215

GENERAL		JACKING	
EMAIL	LBLACIEEYMARD@GMAIL.COM	MAX WORKING WATER DEPTH	175'
TELEPHONE - CAPTAIN #1	985-772-6082	MIN WORKING WATER DEPTH	12'
TELEPHONE - CAPTAIN #2	337-252-0522	MAX HEIGHT OF DECK ABOVE MUD LINE (MINUS PENETRATION)	201
TELEPHONE - VIP #1	985-772-6252	MAX SEA CONDITIONS (JACKING UP OR DOWN)	5'
TELEPHONE - VIP #2	985-772-6251	JACKING SPEED	8' / MIN
OFFICIAL NUMBER	1256246	TOTAL JACKS	3
IMO	N/A	TOTAL JACKING RATING	1,761 LT
CALL SIGN	WDH7535	TOTAL HOLDING RATING	1,258 LT
FLAG PORT	NEW ORLEANS, LA	LEGS	
YEAR DELIVERED	2015	QUANTITY	3
BUILDER	MIF	LEG LENGTH	215'
DIMENSIONS		LEG DIAMETER	72"
LENGTH (OVERALL)	137'	SIZE	1"
WIDTH (OVERALL)	80'	LEG TOWER HEIGHT	14'
LENGTH (BARGE ONLY)	134'	WALL THICKNESS	0.75"
WIDTH (BARGE ONLY)	78'	MATERIAL	ASTM - A53
DEPTH	10'	LIVING QUARTERS	
DESIGN DRAFT	7.5'	CREW ACCOMMODATIONS	7
HULL CHARACTERISTICS		NON-CREW ACCOMMODATIONS INCLUDING VIP	36
TONNAGE	UNDER 200 TONS	TOTAL ACCOMMODATIONS	43
GROSS TONNAGE	180 TONS	VIP ACCOMMODATIONS	2
NET TONNAGE	122 TONS	CENTRAL A/C & HEATING	YES
CENTRAL DECK AREA	4,414 SQ FT	CLERK OFFICE	1
SIDE DECK AREA	670 SQ FT	LOUNGE	YES
USABLE DECK AREA	5,084 SQ FT	HEADS -- ALL LEVELS	YES
MAXIMUM DECK CARGO LOAD AFLOAT	960,000 LBS	GALLEY SEATS	24
PROPULSION		WASHERS / DRYERS	3 / 3
MAIN ENGINE		ELECTRONICS / NAVIGATING	
NUMBER	2	VHF RADIO	YES
MAKE	CATERPILLAR	LOUD HAILER	YES
MODEL	C 32	RADAR(S)	YES
HORSEPOWER	1,000	FATHOMETER	YES
REDUCTION GEAR	TWIN DISC 6.1	AIS	YES
GENERATORS		GPS/DGPS	YES
NUMBER	2	TILT ALARM	YES
MAKE	CATERPILLAR	COMPASS	YES
MODEL	C 6.6	V-SAT COMMUNICATION	YES
GENERATOR OUTPUT	175 KW	SSB	NO
AUX GENSET EQUIPPED	SAME	GMDSS	NO
CRANES		GAILTRONICS SYSTEM	NO
PRIMARY CRANE		CAPACITIES	
MAKE	GULF CRANE	FUEL	17,841 GAL
MODEL	GC - 175	LUBE OIL	118 GAL
LOAD RATING	175 TON	HYDRAULIC OIL	3,000 GAL
BOOM TYPE	LATTICE	SUBMERSIBLE PUMP	150 GPM X2
BOOM LENGTH	100'	WATERMAKER EQUIPPED	NO
CRANE INSTALLATION TYPE	PEDESTAL	POTABLE WATER	20,896 GAL
HEEL PIN HEIGHT	14'	REGULATORY CLASSIFICATION	
AUXILLIARY CRANE		USCG 46CFR SUBCHAPTER "L"	YES
MAKE	GULF CRANE	LLOYDS LOAD LINE	YES
MODEL	GC - 50	SPECIAL FEATURES	
LOAD RATING	50 TON	ZERO DISCHARGE CAPABILITY	YES
BOOM TYPE	TELESCOPING	MARINE SEWAGE TREATMENT SYSTEM	SEAHORSE
BOOM LENGTH	100'	AIR COMPRESSOR	2 - 80 GAL
CRANE INSTALLATION TYPE	PEDESTAL	CANTILEVER PINS	NO
HEEL PIN HEIGHT	10'	PERFORMANCE	
PADS		ESTIMATED SPEED	6 KTS
PAD LENGTH	32'	MAX SEA HEIGHT	5'
PAD WIDTH	16'	FUEL CONSUMPTION	
PAD DEPTH	2' 6"	MAIN ENGINE	50 GAL / HR
PAD LOADING	572 LT	GENERATOR	3 GAL / HR
DECK LOADING	500 LBS / SQ FT	PRIMARY CRANE	15 GAL / HR
		AUX CRANE	8 GAL / HR
		CRUISING	
		STAND BY	3 GAL / HR
		RUNNING CRANES	8 GAL / HR
		UNDERWAY	50 GAL / HR



OUTBOARD PROFILE
SCALE 3/16" = 1'-0"

GENERAL INFORMATION

HULL LENGTH	120'-0"
HULL WIDTH	78'-0"
HULL DEPTH	10'-0"
LENGTH OVERALL	137'-0"
WIDTH OVERALL	82'-0"
FOOTING LENGTH	32'-0"
FOOTING WIDTH	16'-0"
FOOTING DEPTH	2'-6"
LEG LENGTH OVERALL	215'-0"
LEG DIAMETER	72"
LEG THICKNESS	1' / 1-1/4"
LEG MATERIAL	API 5L-X65
JACKS PER LEG	QTY TEN
JACKING RATING / JACK	65.75 S-TONS
HOLDING RATING / JACK	87.67 S-TONS
JACKING RATING / LEG	657.50 S-TONS
HOLDING RATING / LEG	876.7 S-TONS
TOTAL JACKS	QTY 30
TOTAL JACKING RATING	1972.5 S-TONS
TOTAL HOLDING RATING	2630.0 S-TONS
FUEL OIL CAPACITY	16,303 GAL
POTABLE WATER CAPACITY	18,994 GAL
JACKING HYDRAULIC OIL	3688 GAL
CRANE HYDRAULIC OIL	2250 GAL
ACCOMMODATION CREW	8 MEN
ACCOMMODATION VIP	2 MAN
ACCOMMODATION PACS	34 MEN
ACCOMMODATION TOTAL	44 MEN

M/V LACIE G EYMARON 1256246


REVISIONS

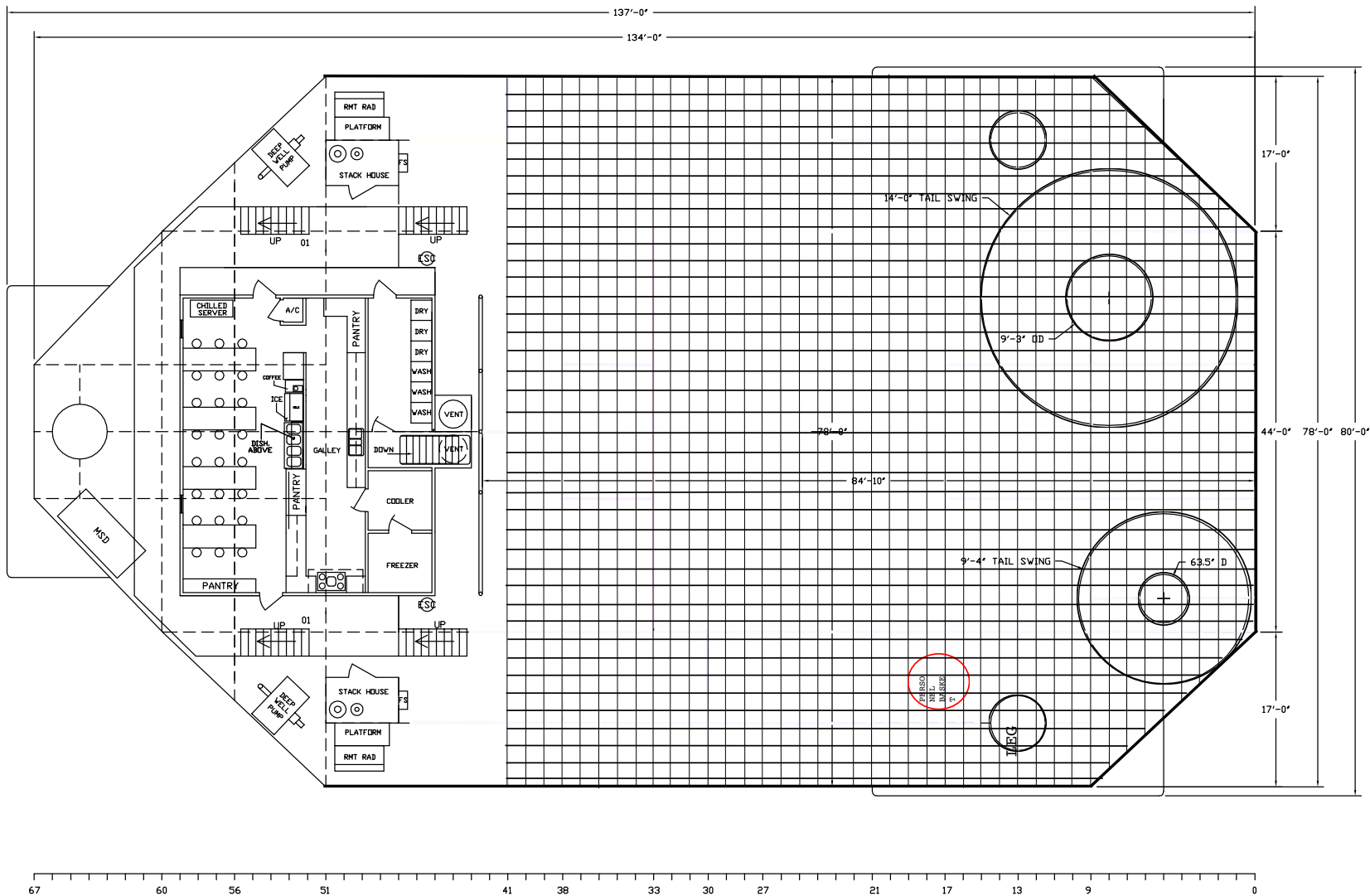
DYNAMICS MARINE, INC.
2483 LITTLE LANE - NE, WESSON, MS 39191
601-695-4363

MARINE INDUSTRIAL FABRICATION

OFFSHORE MARINE CONTRACTORS

CLASS SUPER 215 LIFTBOAT
OUTBOARD PROFILE

DATE: 15JAN13	APPV:
BY: GILLY	NO: GA-01 



GENERAL ARRANGEMENT MAIN DECK

SCALE 3/16" = 1'-0"

FOR M/V LACIE G EYMARD, HALIMAR H-183

REVISIONS

DYNAMICS MARINE, INC.
2483 LITTLE LANE- NE, WESSON, MS 39191
601-695-4363

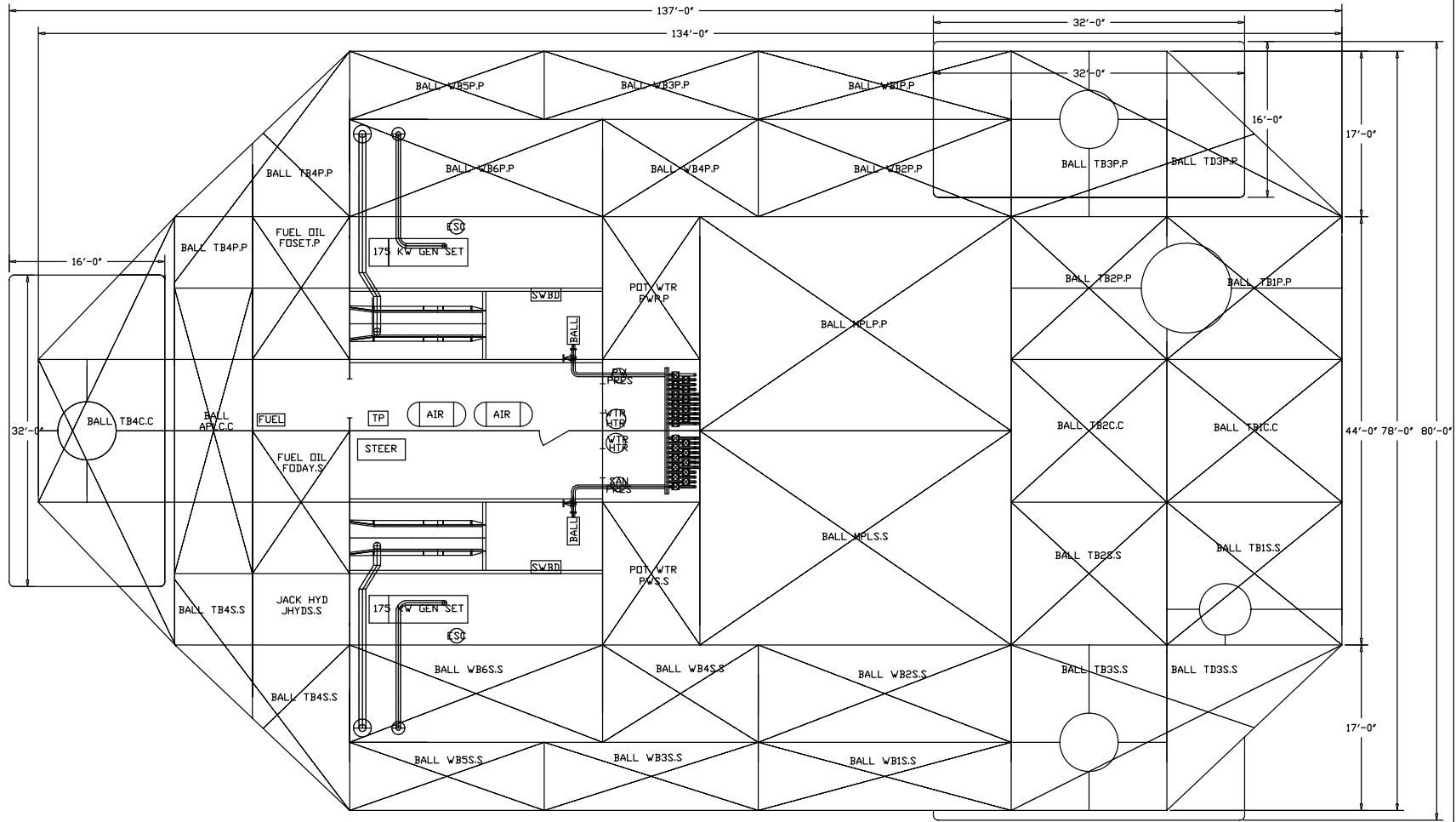
MARINE INDUSTRIAL FABRICATION

OFFSHORE MARINE CONTRACTORS, INC.

CLASS SUPER 215 LIFTBOAT
GENERAL ARRANGEMENT MAIN DECK

DATE: 23APR14 APPV:

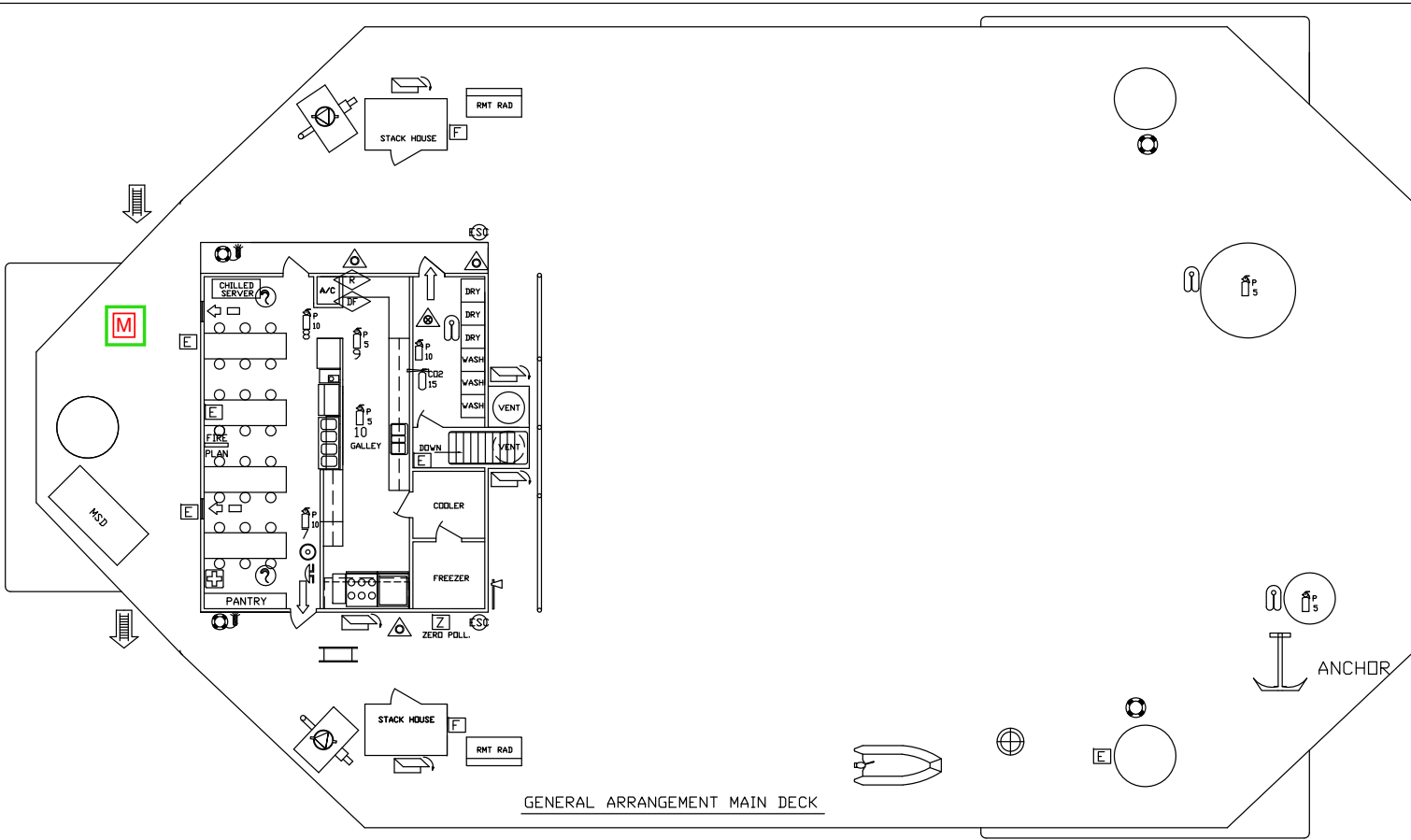
BY: GILLY NO: GA-03



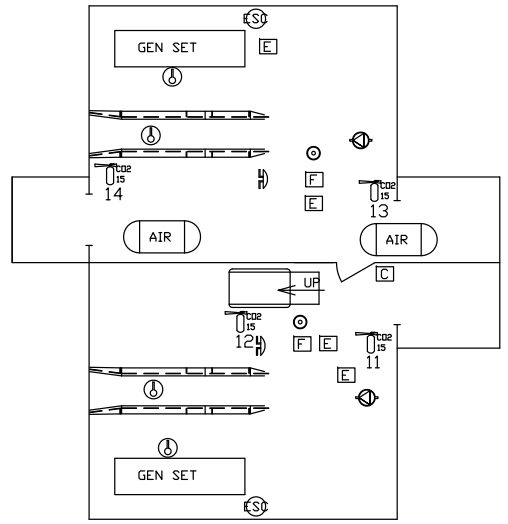
GENERAL ARRANGEMENT HOLD

SCALE 3/16" = 1'-0"

M/V LACIE G EYMARD DN 1256246	
REVISIONS	
DYNAMICS MARINE, INC. 2483 LITTLE LANE - NE, WESSON, MS 39191 601-695-4363	
MARINE INDUSTRIAL FABRICATION	
OFFSHORE MARINE CONTRACTORS CLASS SUPER 215 LIFTBOAT GENERAL ARRANGEMENT HOLD	
DATE: 14JAN14	APPV:
BY: GILLY	NO: GA-02



GENERAL ARRANGEMENT MAIN DECK



ENGINE ROOM

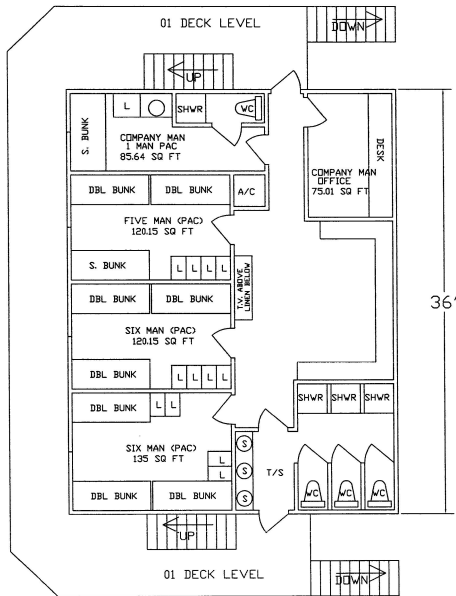
SYMBOL	SYMBOL DESCRIPTION
	FOG BELL
	PFD - LIFE JACKET W/ LIGHT & WHISTLE
	EMG PDS INDICATING RADIO BEACON (E.P.I.R.B.)
	LIFE RING
	LIFE RING W/ 100 FT. LINE
	LIFE RING W/ LIGHT
	12-MAN LIFE FLOAT W/ LIGHT
	PORTABLE FIRE EXTINGUISHER, 15# CO2
	PORTABLE FIRE EXTINGUISHER, 10# POWDER
	PORTABLE FIRE EXTINGUISHER, 5# POWDER
	EMERGENCY VENTILATION SHUTDOWN
	EMERGENCY FUEL / FUEL PUMP SHUTDOWN

SYMBOL	SYMBOL DESCRIPTION
	EMERGENCY RANGE DISCONNECT (MANUAL)
	EMERGENCY DEEP FRYER DISCONNECT (MANUAL)
	STRETCHER
	ROCKET PARACHUTE FLARES
	FIRE AXE W/ BRACKET
	FIRE STATION WITH 50' HOSE
	EMERGENCY LIGHT
	LINE THROWING APPARATUS
	RESCUE BOAT W/ 25 HP OUTBOARD MOTOR
	FIRST AID KIT
	SMOKE DETECTOR, BATTERY OPERATED
	HEAT DETECTOR

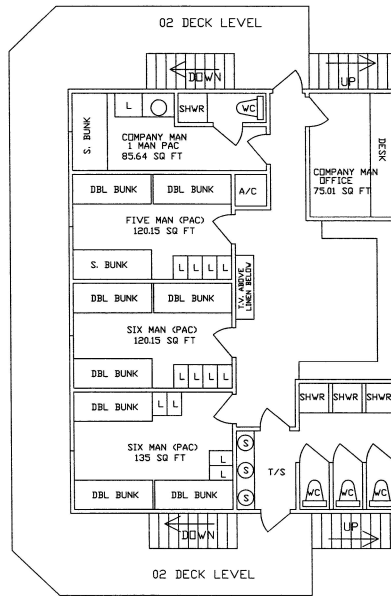
SYMBOL	SYMBOL DESCRIPTION
	AUX. CONTROL STATION
	GENERAL ALARM ACTUATOR SWITCH
	GENERAL ALARM BELL
	PRIMARY ESCAPE ROUTE
	SECONDARY ESCAPE ROUTE
	EMBARKATION LADDER
	FIRE PUMP
	PERSONNEL NET
	FIRE AND SAFETY PLAN / STATION BILL (POSTED)
	VENTILATION DAMPER, MANUAL
	TILT ALARM AUDIBLE HORN
	OVERBOARD PUMP START / STOP

Muster Station

D/N 1256246 M/V LACIE G EYMARD	
REVISIONS	
DYNAMICS MARINE, INC. 2483 LITTLE LANE- NE, WESSON, MS 39191 601-695-4363	
MARINE INDUSTRIAL FABRICATION	
OFFSHORE MARINE CONTRACTORS CLASS SUPER 215 LIFTBOAT GENERAL ARRANGEMENT MAIN DECK	
DATE: 16DEC14	APPV:
BY: EGM	NO: GA-03

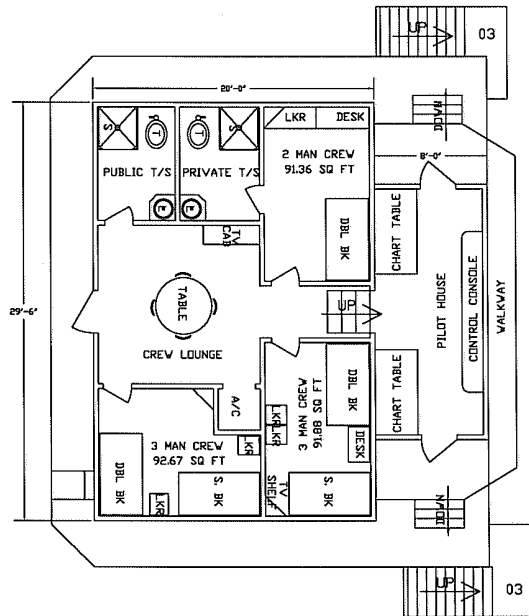


GENERAL ARRANGEMENT 01 LEVEL
SCALE 1/4" = 1'-0"

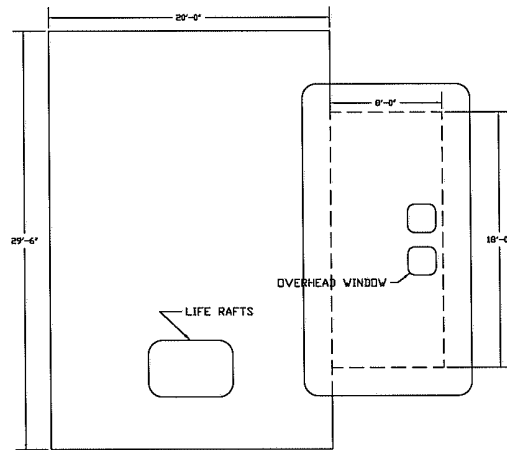


GENERAL ARRANGEMENT 02 LEVEL
SCALE 1/4" = 1'-0"

REVISIONS	
DYNAMICS MARINE, INC. 2483 LITTLE LANE - NE, WESSON, MS 39191 601-698-4263	
MARINE INDUSTRIAL FABRICATION	
DYNAMICS MARINE, INC. CLASS 215	
CLASS 215 LIFTBOAT	
GENERAL ARRANGEMENT 01 AND 02 DECKS	
DATE: 20NOV13	APPV:
BY: GILLY	INR: GA-04



GENERAL ARRANGEMENT 03 LEVEL
SCALE 1/4" = 1'-0"



GENERAL ARRANGEMENT 04 LEVEL
SCALE 1/4" = 1'-0"

REVISIONS

DYNAMICS MARINE, INC.
2483 LITTLE LANE - NE, WESSON, MS 39191
601-695-4363

MARINE INDUSTRIAL FABRICATION

DYNAMICS MARINE, INC. CLASS 215
CLASS 215 LIFTBDAT
GENERAL ARRANGEMENT 04, 05, & 06 DECKS

DATE: 2MAR11	APPV:
BY: GILLY	NO: GA-05

4

3

DWG NO

SH

REV

1

REVISIONS

ZONE	REV	DESCRIPTION	DATE	APPROVED

GC175-100 PEDESTAL CRANE LOAD CHART FOR 10' AIRGAP
 MAIN HOIST - 8 PART REEVING - 3265 LB LOADBLOCK - 1 1/8" DIA BRIDON 34LR ROPE
 LOAD UNITS = POUNDS x 1000

RADIUS FEET	BOOM ANGLE DEGREES	LOW SPEED					HIGH SPEED				
		ONBOARD	OFFBOARD			API MAX WAVE HEIGHT	ONBOARD	OFFBOARD			API MAX WAVE HEIGHT
			SIGNIFICANT WAVE HEIGHT					SIGNIFICANT WAVE HEIGHT			
2'	4'	6'	2'	4'	6'	2'	4'	6'			
24.7	81.00	350.000	350.000	317.396	265.008	1.62	181.540	230.700	230.700	230.700	3.58
25	80.80	350.000	350.000	317.371	264.978	1.62	181.540	230.700	230.700	230.700	3.58
30	77.87	350.000	350.000	294.273	227.638	1.62	181.540	230.700	230.700	220.951	3.58
35	74.90	350.000	328.849	254.529	196.404	1.62	181.540	230.700	230.700	190.355	3.58
40	71.89	350.000	289.149	222.958	171.498	1.62	181.540	230.700	215.751	165.988	3.58
45	68.82	350.000	257.042	197.360	151.264	1.62	181.540	230.700	190.708	146.215	3.58
50	65.68	316.294	229.780	175.579	134.023	1.80	181.540	211.644	168.893	128.987	3.93
55	62.46	275.953	207.613	157.853	119.979	1.80	181.540	199.391	151.623	115.321	3.93
60	59.13	244.542	188.811	142.830	108.088	1.80	181.540	181.063	137.004	103.763	3.93
65	55.67	219.272	172.863	130.214	98.190	1.80	181.540	165.558	124.755	94.161	3.93
70	52.06	198.444	158.926	119.137	89.463	1.80	181.540	152.008	114.002	85.697	3.93
75	48.25	180.951	146.794	109.539	81.934	1.80	180.951	140.229	104.696	78.403	3.93
80	44.18	166.033	136.251	101.295	75.531	1.80	166.033	130.018	96.721	72.211	3.93
85	39.77	153.148	127.056	94.198	70.082	1.80	153.148	121.136	89.871	66.952	3.93
90	34.89	141.900	118.886	87.909	65.266	1.80	141.900	113.247	83.803	62.305	3.93
95	29.27	131.986	110.751	82.277	61.058	1.97	131.986	105.181	78.084	58.039	4.28
100	22.32	115.660	97.864	72.526	54.372	1.97	115.660	92.800	68.915	51.818	4.28
105	11.60	95.831	82.741	61.128	45.819	1.97	95.831	78.307	58.000	43.624	4.28
106.5	0.00	63.881	55.155	40.748	30.543	1.97	63.881	52.199	38.663	29.080	4.28

API MAX WAVE HEIGHT IS BASED ON AVAILABLE HOOK SPEED AND IS USED FOR AVOIDANCE OF RE-CONTACT OF THE LOAD WITH THE SUPPLY BOAT DECK DURING A LIFT.

WHERE HIGH SPEED OFFBOARD CAPACITY EXCEEDS HIGH SPEED ONBOARD CAPACITY, IT IS NECESSARY TO SWITCH TO LOW SPEED ONCE LOAD CLEARS SUPPLY VESSEL DECK.

Gulf Crane Services Inc.		GC175L - 100 CRANE			
DESIGNER	GFL	7/6/14	SIZE	B	REV
APPROVED			SERIAL NO	175L13001	DWG NO
				GC175L-LC9500	-
			SCALE	Full	RELEASE DATE
					WEIGHT
					SHEET
					1 of 1

4

3

2

1

4

3

1

REVISIONS				
ZONE	REV	DESCRIPTION	DATE	APPROVED

GC175-100 PEDESTAL CRANE LOAD CHART FOR 10' AIRGAP

AUX HOIST - 1 PART REEVING - 396 LB BALL & HOOK - 7/8" DIA BRIDON 34LR ROPE

LOAD UNITS = POUNDS x 1000

PERSONNEL CAPACITIES ARE 50% OF THE CORRESPONDING CARGO CAPACITIES

RADIUS FEET	BOOM ANGLE DEGREES	ONBOARD	OFFBOARD SIGNIFICANT WAVE HEIGHT				
			2'	4'	6'	8'	10'
			29.7	81.00	14.536	14.536	13.468
30	80.83	14.536	14.536	13.467	11.874	10.165	8.728
35	78.15	14.536	14.536	13.456	11.863	10.150	8.714
40	75.44	14.536	14.536	13.443	11.850	10.132	8.697
45	72.69	14.536	14.536	13.424	11.831	10.106	8.672
50	69.89	14.536	14.536	13.403	11.812	10.078	8.645
55	67.03	14.536	14.536	13.376	11.785	10.042	8.610
60	64.09	14.536	14.536	13.347	11.757	10.003	8.573
65	61.07	14.536	14.536	13.313	11.724	9.957	8.528
70	57.95	14.536	14.536	13.274	11.687	9.905	8.479
75	54.70	14.536	14.536	13.229	11.643	9.844	8.421
80	51.30	14.536	14.536	13.179	11.576	9.776	8.356
85	47.71	14.536	14.536	13.120	11.495	9.696	8.281
90	43.87	14.536	14.536	13.053	11.402	9.607	8.195
95	39.71	14.536	14.536	12.975	11.294	9.502	8.096
100	35.09	14.536	14.536	12.879	11.161	9.373	7.974
105	29.77	14.536	14.536	12.763	10.999	9.217	7.816
110	23.21	14.536	14.536	12.603	10.464	8.653	7.253
115	13.21	14.536	14.415	11.817	9.573	7.832	6.513
117	4.24	14.536	14.000	11.000	9.000	7.000	6.000

SAFE WORKING LOADS CALCULATED PER API RP2C 7TH EDITION.
USE OFFBOARD CHART WHEN SETTING ONTO OR LIFTING FROM AN ATTENDING VESSEL.



Gulf Crane Services Inc.		GC175L - 100 CRANE			
DESIGNER	GFL	DATE	7/6/14	SIZE	B
APPROVED		SCALE	Full	SERIAL NO	175L13001
		RELEASE DATE		DWG NO	GC175L-LC9505
		WEIGHT		REV	-
		SHEET	1 of 1		

4

3

2

1

D

C

B

A

D

C

B

A

GC50B-TELESCOPIC BOOM CRANE LOADCHART

RADIAL BOOM ANGLE DEGREES	FULLY RETRACTED					
	MAIN			AUX		
	ONBOARD	OFFBOARD		ONBOARD	OFFBOARD	
FEET						
8.2	81.92	100.000	72.100			
10	80.09	100.000	72.100	8.148	8.148	
15	75.00	92.934	61.389	8.148	8.148	
20	69.76	72.866	48.011	8.148	8.148	
25	64.33	59.238	38.925	8.148	8.148	
30	58.61	49.934	32.723	8.148	8.148	
35	52.48	42.857	28.005	8.148	8.148	
40	45.77	37.232	24.255	8.148	8.148	
45	38.10	32.802	21.301	8.148	8.148	
50	28.67	29.076	18.817	8.148	8.148	
55	13.82	25.259	16.273	8.148	8.148	
57	0.00	24.361	15.674	8.148	8.148	
60	13.24			8.148	8.148	
61	0.00			8.148	8.148	

RADIAL BOOM ANGLE DEGREES	50% EXTENDED					
	MAIN			AUX		
	ONBOARD	OFFBOARD		ONBOARD	OFFBOARD	
FEET						
11.1	81.92	71.034	46.789	8.148	8.148	
15	79.07	61.094	40.163	8.148	8.148	
20	75.33	53.611	35.174	8.148	8.148	
25	71.52	47.901	31.367	8.148	8.148	
30	67.61	43.320	28.313	8.148	8.148	
35	63.59	38.552	25.135	8.148	8.148	
40	59.41	33.492	21.761	8.148	8.148	
45	55.03	29.508	19.105	8.148	8.148	
50	50.39	26.260	16.940	8.148	8.148	
55	45.40	23.511	15.107	8.148	8.148	
60	39.91	21.219	13.579	8.148	8.148	
65	33.66	19.075	12.150	8.148	8.148	
70	26.08	16.908	10.705	8.148	8.148	
75	15.07	14.987	9.425	8.148	8.148	
78	0.00	14.110	8.840	8.148	8.148	
80	14.70			8.148	8.148	
82	0.00			8.148	8.148	

RADIAL BOOM ANGLE DEGREES	100% EXTENDED					
	MAIN			AUX		
	ONBOARD	OFFBOARD		ONBOARD	OFFBOARD	
FEET						
14	81.92	45.372	29.681			
15	81.39	39.732	25.921	8.148	8.148	
20	78.47	35.359	23.006	8.148	8.148	
25	75.52	31.978	20.752	8.148	8.148	
30	72.52	29.153	18.869	8.148	8.148	
35	69.47	26.737	17.258	8.148	8.148	
40	66.36	24.771	15.947	8.148	8.148	
45	63.16	23.088	14.825	8.148	8.148	
50	59.87	21.606	13.837	8.148	8.148	
55	56.46	20.341	12.994	8.148	8.148	
60	52.90	19.227	12.251	8.148	8.148	
65	49.16	17.529	11.119	8.148	8.148	
70	45.19	15.852	10.001	8.148	8.148	
75	40.91	14.481	9.087	8.148	8.148	
80	36.21	13.149	8.199	8.148	8.148	
85	30.88	11.892	7.361			
90	24.49	10.541	6.461			
95	15.71	9.343	5.662			
99	0.00	8.621	5.181			
85	35.72			8.148	7.361	
90	30.49			8.148	6.460	
95	24.19			8.148	5.661	
100	15.43			8.146	5.151	
103	0.00			8.146	5.030	

LOAD UNITS ARE POUNDS x 1000.

TIP SECTION MUST BE SEATED ON ITS STOPS FOR THE FULLY RETRACTED MAIN HOIST CHART TO BE USED.

WHEN BOOM IS EXTENDED BEYOND 50%, THE 100% EXTENDED CAPACITIES ARE TO BE USED.

ONBOARD RATINGS ARE CALCULATED IN ACCORDANCE WITH API RP2C 7TH ED. GENERAL METHOD.

OFFBOARD RATINGS ARE CALCULATED IN ACCORDANCE WITH API RP2C LEGACY METHOD.

PERSONNEL CAPACITIES ARE 50% OF THE CORRESPONDING CARGO CAPACITIES.

LOADCHART TO BE ETCHED OR ENGRAVED ONTO A STAINLESS STEEL PLATE 0.05" OR THICKER. LETTERS AND LINWORK ARE TO BE FILLED WITH PERMANENT BLACK INK.

R 3/8" TYP

ZONE	REV	DESCRIPTION	DATE	APPROVED
REVISIONS				

Gulf Crane Services Inc.		GC50B CRANE			
DESIGNER	GFL	DATE	8/7/14	SIZE	B
		SERIAL NO	50B13001	DWG NO	GC50B-LC9500
APPROVED		SCALE	Full	RELEASE DATE	
		WEIGHT		SHEET	1 of 1