

SARbot®

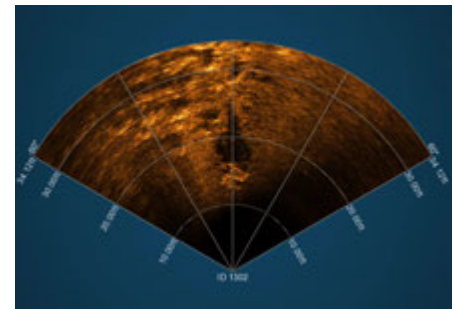
Search & Recovery Robotic System



SARbot® (Search & Recovery Robotic System) is a highly capable & low-cost tool for searching, locating and identifying submerged targets in marine environments. Designed from a base ROV platform that has more than 4000 systems in the field, the SARbot® has been optimized to allow the operator to work in low to zero visibility conditions, recover targets and work with an unlimited search time to an operational depth of up to ~650ft.



3 Surface Power Console Options



Integrated Multibeam Imaging Sonar

BASIC SPECIFICATIONS

REACH	100m (330ft) Standard Depth Rating 300m (984ft) Extended Depth Rating 125m (410ft) or 250m (820ft) Tethers
VIDEO	1080p HD Video
LIGHTING	6000 Lumens (total)
GRIPPER	Large Interlocking Jaws
MULTIBEAM IMAGING SONAR	Compatibility: Tritech Gemini, Blueprint Subsea Oculus, Sonoptix ECHO & Teledyne BlueView
DIMENSIONS	L 457mm (18"), W 575mm (22.6"), H 254mm (10")
ROV WEIGHT	13.5kg (30lbs) - Typical (Dependent on Payloads)
TOPSIDE WEIGHT	16kg (35lbs)
TOPSIDE CONTROL	
THRUSTERS	(4) Lateral Vectored Thrusters for Precise Control (4) Vertical Thrusters for Lift & Stabilization
OPERATING ENVIRONMENT	Zero Visibility & Up to a 2 Knot Current*
SAFETY	Isolated Output, Shielded Tether Meets IMCA D 045, R 015 Standard

*Higher current operation possible with experienced operator.

KEY FEATURES

- Highly Capable & Maneuverable ROV System
- Low Investment & Cost of Ownership
- Full 1080p HD Video
- 1200W or 1800W Vehicle Power Supply
- 6-Axis Control with Stabilization
- Direct Load Transfer for Retrieving Submerged Objects
- Effective in Low to Zero Visibility Environments
- Compatible with Most Multibeam Imaging Sonars
- Simple and Designed to be Customer Maintained
- Surfaced Powered (Battery Power Optional)
- Single Person Deployable
- Options: DVLs, USBL Tracking Systems & Scaling Lasers