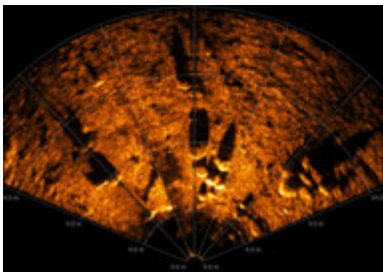
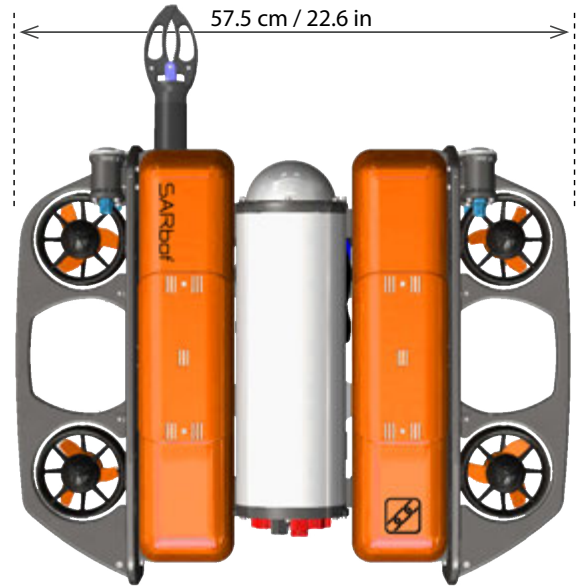


SARbot™

Search & Recovery Robotic System



SARbot™ (Search & Recovery Robotic System) is a highly capable & low-cost tool for searching, locating and identifying submerged targets in marine environments. Designed from a base ROV platform that has more than 2700 systems in the field, the SARbot™ has been optimized to allow the operator to work in low to zero visibility conditions, recover targets and work with an unlimited search time to a depth up to 300m.



Integrated Multibeam Imaging Sonar



3 Power Console Options

BASIC SPECIFICATIONS

REACH	100m (330ft) Standard Depth Rating 300m (984ft) Depth Rating (Optional) Up To 300m (984ft) Tether
VIDEO	1080p HD Video
LIGHTING	6000 Lumens (total)
GRIPPER	Interlocking Jaws (Large Optional)
MULTIBEAM IMAGING SONAR	Compatible with Tritech Gemini, Blueprint Subsea Oculus & Teledyne BlueView
DIMENSIONS	L 457mm (18"), W 575mm (22.6"), H 254mm (10")
ROV WEIGHT	13.5kg (30lbs) - Typical (Dependent on Payloads)
TOPSIDE WEIGHT	16kg (35lbs)
TOPSIDE CONTROL	3 Power Console Options / Windows 10 Laptop
THRUSTERS	(4) Lateral Vectored Thrusters for Precise Control (4) Vertical Thrusters for Lift & Stabilization
OPERATING ENVIRONMENT	Zero Visibility & Up to a 2 Knot Current
SAFETY	Isolated Output, GFCI 5ma/<20ms, Shielded Tether Meets IMCA D 045, R 015 Standard

KEY FEATURES

- Highly Capable & Maneuverable ROV System
- Low Investment & Cost of Ownership
- Full 1080p HD Video
- 1200W Vehicle Power Supply
- 6-Axis Control with Stabilization
- Direct Load Transfer for Retrieving Submerged Objects
- Effective in Low to Zero Visibility Environments
- Compatible with Most Multibeam Imaging Sonars
- Simple and Designed to be Customer Maintained
- Surfaced Powered (Battery Powered Optional)
- Single Person Deployable