

Catalog
2024

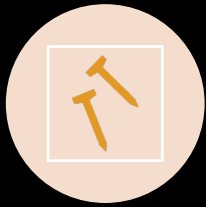


ZIONPALLETS.COM
224-706-5436

What We Do



BUILD



REPAIR



BUY



SELL



TRAILER
PRGM.



RECYCLING
PRGM.



ZION PALLETS, INC.
Zionpalletsinc.com
224-706-5436

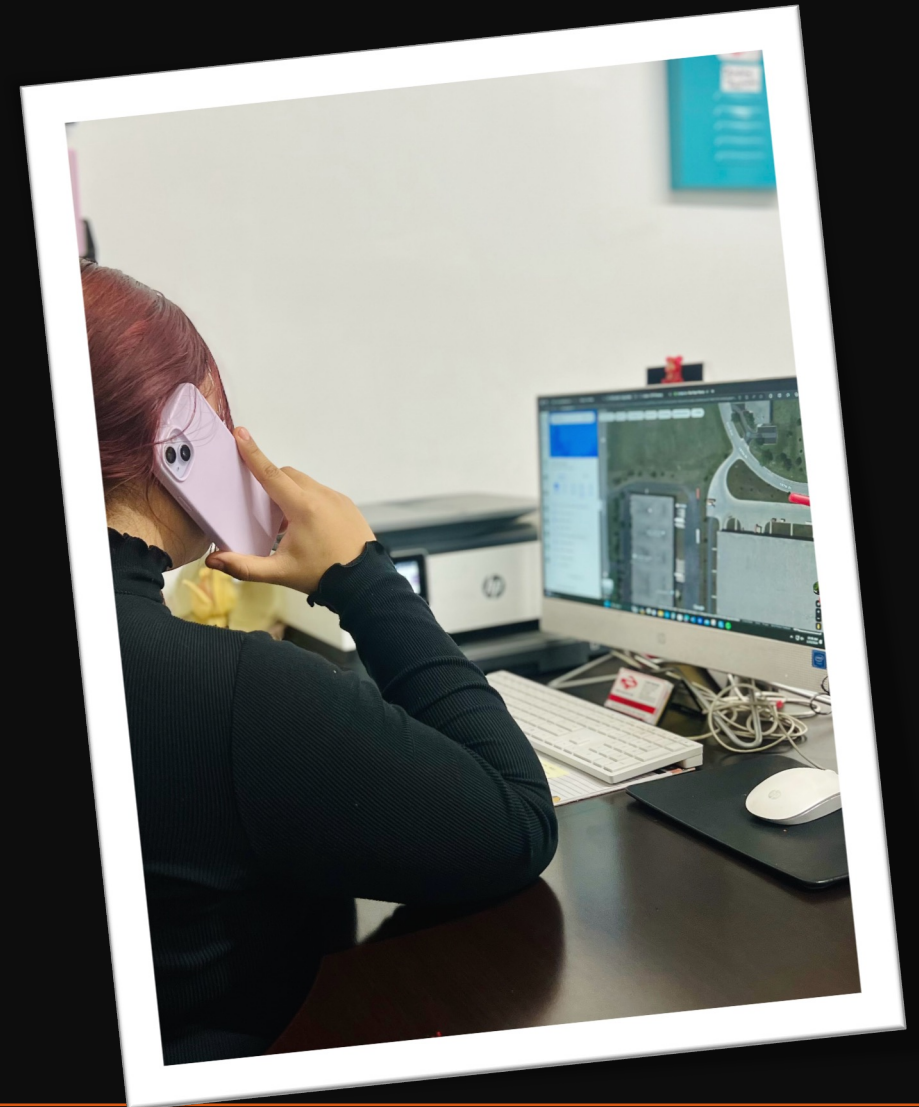
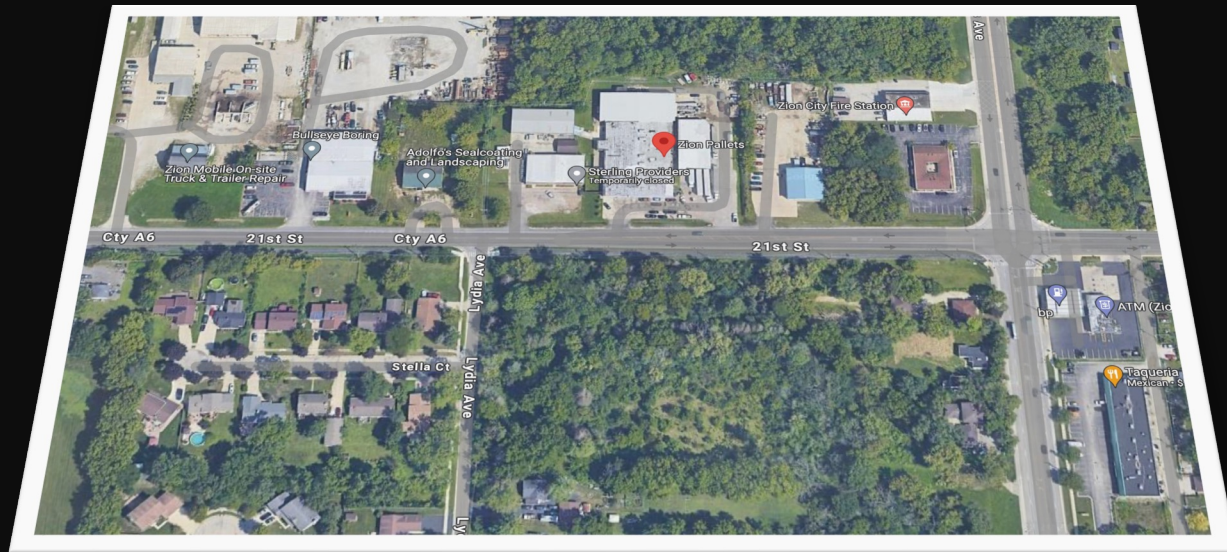
Yale



E-mail us: info@zionpalletsinc.com

Give us a call @
(224)-706-5436

We are Located at
3142 21st St Zion, IL
60099





About Us

- Zion Pallets Inc. is a family run company located in Zion, IL. We are committed to quality and customer satisfaction. We offer pallets for food, beverage, pharmaceutical, manufacturing, distribution, and warehousing industries. Our offering include a wide range of one way or two-way export standard and rack-able pallets. Along with our sales and office staff, our company has a pallet building, refurbished shop, semi-trucks, trailers and various size box trucks to meet our customer needs



Our Mission

- At Zion Pallets, it's not just about providing pallets; it's about providing solutions tailored to your business. Whether you're a small startup or a large enterprise, we're here to cater to your pallet needs with flexibility and precision. So, if you're ready to elevate your pallet game and streamline your logistic, lets connect. Zion pallets is your partner for reliable and tailored pallets services. Looking forward to collaborate with you.





48" X 40" GMA pallet

- (GMA) Pallets are the same grade as Grade A pallets, the difference is that the end boards both top and bottom are 6in wide and are constructed subject to standards issue by the "Grocery Manufacturing Association of America"(GMA). This type of pallets is highly popular and commonly used by retail where they will sit out on the selling floor becoming an integral part of the display



Premium Grade A (#1 Pallet)



A grade a Premium is a recycled pallet where the pallet hasn't had any significant damage to it. It only had few minor repairs keeping the same standard as a brand-new pallet. It will have some color variation and a mixture of four-inch and six-inch decking. This type of pallet are mostly used by food, pharmaceutical or other industries

Grade A #1

“Grade A” pallets are recycled pallets that have been refurbished to near original condition. All damage boards have been replaced. Unlike our premium grade A pallet, our grade A #1 pallet are repaired by using staples to fix broken runners which devalues the pallet in both looks and dependability. It's still a reliable pallet that has a fair price compared to our premium version.



Premium Grade B (#2 pallet)

The perfect fit between a Grade A and Grade B. This cost saving pallet will have had fewer transfer cycles than a regular Grade B and as a result will likely have fewer markings, chips, cracks, or other wear and tear damage. Manufacturing companies typically use this pallet for internal and external needs



Grade B (#2 pallet)

Grade B pallets have had multiple repairs done to them. Often, they have had replaced dock boards, runners, or stringers. While still structurally solid and still suitable for many types of business looking for affordable pallets. These are the most popular pallet in the industry and considerably less expensive than Grade A pallets.



Custom Pallets

- Regular pallets aren't getting the job done. At Zion Pallets, we help our customers to find the perfect pallet/skid/crate. We provide you with a digital 3D model of what you need free of charge. Our wood pallets can be built to any specification and quantity desired so we can help you find pallets that meet your requirements. Custom pallets can be built from either recycled or new material





Trailer Program

- Are scrap pallets taking up too much space and giving out a bad impression in your warehouse. We provide trailers where you can load all scrap pallets, so you don't have to worry about scrap pallets intervening in your warehouse. Trailer pick-ups can be scheduled, or you can give us a call whenever the trailer is full, and we would happily pick it up and swap it out with an empty trailer.





Consulting

- Not Sure what you need? Contact us and we will be glad to help you find the right pallet solution for your business needs. Pallets are what we expertise in. We provide years of experience and have built relationships with neighboring pallet companies. If there a job we can't do we will suggest you a pallet company that can.