



VED XR

TECHNOLOGY SERVICES

Bridging Reality with Immersive Intelligence

VED XR Technology Services is an immersive technology company specializing in AR, VR, and MR solutions that transform how brands communicate, train, and engage. We design intelligent, interactive environments that bridge the gap between the physical and digital worlds, enabling more impactful storytelling and deeper user engagement.

Our expertise spans a wide range of advanced solutions including Touch Applications, Interactive Surfaces, Immersive Rooms, and Gesture-based technologies. We also develop scalable Mobile Applications integrated with AI capabilities, allowing businesses to deliver personalized, data-driven experiences across platforms and environments.

From Holographic Displays and Projection Mapping to fully customized experiential installations, VED XR focuses on creating high-impact, future-ready solutions. We combine creativity, technology, and strategy to build experiences that not only captivate audiences but also drive measurable business outcomes.

Engineering Immersive Experiences End-to-End

Immersive Experiences

- AR / VR / MR
- Interactive Installations
- Phygital Systems

Engagement & Activation

- Exhibition Tech
- Brand Experiences
- Gamified Interactions

Business Solutions

- Simulation & Training
- Product Visualization
- Digital Twins

Concept → Design → Develop → Deploy → Engage

Solutions and Immersive Installations

LED Globe

An **LED Globe** is an immersive, high-impact visual installation that transforms a traditional display into a dynamic, 360-degree storytelling medium. Built using advanced LED panel technology, it creates a seamless spherical surface capable of showcasing rich, high-resolution content from every angle. This makes it ideal for attracting attention in high-footfall environments such as exhibitions, malls, and experience centers and various global events.

The LED Globe can display a wide range of content—from brand films and product visualizations to real-time data, global simulations, and interactive experiences. When integrated with immersive content, it becomes more than just a display—it becomes an engaging and centerpiece that encourages audience's visual treat and exploration.

Designed for maximum visual impact and versatility, the LED Globe helps brands communicate complex ideas in a simplified, visually compelling format. Whether used for showcasing global presence, innovation, or immersive storytelling, it creates a memorable experience that enhances engagement, boosts recall, and elevates brand perception.



Reference Video

Rotating DNA Display

A **DNA Rotating Screen** is a dynamic, kinetic LED installation designed in a double-helix (DNA) structure that continuously rotates to create a striking 3D visual effect. It combines motion and digital content to deliver a futuristic display that captures attention instantly, making it ideal for exhibitions, product launches, and high-impact brand activations.

The rotating structure enables content to be viewed from multiple angles, enhancing depth, motion, and visual engagement. It can showcase animations, product highlights, or thematic storytelling, while synchronization across panels ensures seamless, fluid visuals. This creates a sense of innovation and movement that static displays cannot achieve.

Designed to symbolize evolution, innovation, and progress, the DNA Rotating Screen is particularly effective for brands looking to communicate transformation and advanced technology. It serves as a powerful centerpiece that elevates brand presence and leaves a strong, lasting impression on audiences.



Reference Video

LED Cube Display

A **5-Sided LED Cube Display** is a volumetric digital installation that presents content across five connected faces, forming a suspended or grounded cube structure. Its multi-surface format allows visuals to wrap seamlessly around edges, creating a unified, spatial experience that stands out in crowded environments.

By leveraging synchronized playback across all sides, the cube enables immersive storytelling with depth, continuity, and motion. Content can flow from one face to another, creating illusions of 3D space, product breakdowns, or layered narratives that evolve as viewers move around the structure.

Engineered for high visibility and creative flexibility, the LED cube serves as a versatile centerpiece for exhibitions, retail spaces, and experiential zones. It enhances brand presence by delivering visually rich, multidimensional communication that is both engaging and memorable.



Stacked LED Cube Display

A **5-Sided LED Cube Display** is a volumetric digital installation that presents content across five connected faces, forming a suspended or grounded cube structure. Its multi-surface format allows visuals to wrap seamlessly around edges, creating a unified, spatial experience that stands out in crowded environments.

By leveraging synchronized playback across all sides, the cube enables immersive storytelling with depth, continuity, and motion. Content can flow from one face to another, creating illusions of 3D space, product breakdowns, or layered narratives that evolve as viewers move around the structure.

Engineered for high visibility and creative flexibility, the LED cube serves as a versatile centerpiece for exhibitions, retail spaces, and experiential zones. It enhances brand presence by delivering visually rich, multidimensional communication that is both engaging and memorable.



Immersive Magazine Photo Booth

This **Interactive Photo Booth Experience** allows visitors to capture their moment through a touch-enabled display integrated with a high-quality camera. With a simple tap, users can take their photo and instantly see themselves featured as the headline image on a customized newspaper-style layout, designed around the theme of the event.

The system dynamically places the captured image into a pre-designed newspaper cover, complete with personalized headlines, branding elements, and contextual messaging. This creates a unique, story-driven output that transforms a regular photo into a memorable, share-worthy experience aligned with the event narrative.

As a takeaway, users receive a high-quality A4 print of their personalized newspaper front page, making it both a physical keepsake and a brand recall tool. This concept combines interactivity, personalization, and instant gratification to deliver an engaging experience that audiences are likely to retain and share.



Reference Video

Circular Display with Touch Content

A **Circular Display with Touch Interaction** is a modern digital interface designed around a seamless, curved form factor that enhances both aesthetics and usability. Its unique shape draws attention while offering an intuitive, 360-degree interaction zone, making it ideal for high-engagement environments such as exhibitions, retail spaces, and experience centers.

Integrated with responsive touch technology, the display enables users to explore content through gestures, taps, and swipes. From product showcases and informational modules to interactive journeys and gamified experiences, the system delivers a fluid and engaging interface that adapts to user input in real time.

Combining form and function, the circular display creates a distinctive brand touchpoint that encourages exploration and interaction. Its visually appealing structure, paired with dynamic content, helps simplify complex information while delivering an immersive and memorable user experience.



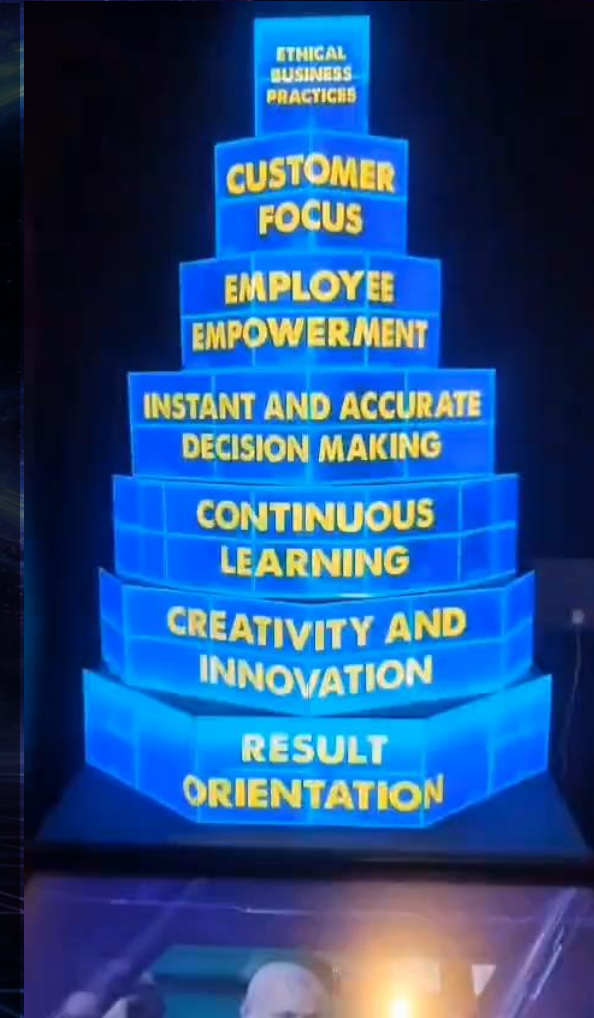
Reference Video

Active LED Tower Structure

An **Active LED Tower** is a vertically engineered digital structure composed of stacked LED modules, designed to resemble an architectural form such as a building or tower. Its modular construction allows for seamless integration of screens, creating a unified surface that transforms the structure into a striking, high-visibility digital landmark.

Content flows continuously across the tower, utilizing its height and form to create cascading visuals, vertical narratives, and immersive motion effects. The synchronized LED modules enable dynamic storytelling that evolves from base to top, delivering a sense of scale, depth, and movement that captures attention from a distance.

Built to command presence in large environments, the Active LED Tower serves as a powerful experiential centerpiece. It enhances brand storytelling by combining structure and content into one cohesive experience, offering a visually compelling way to showcase innovation, scale, and impact.



Reference Video

Content Drag and Drop

This **Interactive Content Wall** features a touch-enabled screen where images and videos are displayed in a scattered, dynamic layout, inviting users to explore content in a non-linear and engaging way. The interface encourages curiosity, allowing users to browse, select, and interact with multiple media elements effortlessly.

With a simple hold-and-drag gesture, users can pick any content tile and drop it onto a designated area, instantly triggering playback on a larger front-facing display. This creates a seamless connection between personal interaction and shared viewing, transforming individual exploration into a collective experience.

Designed to enhance engagement and participation, the system turns content discovery into an intuitive and interactive activity. It not only empowers users to control what is showcased but also creates a visually impactful presentation on the main screen, making it ideal for exhibitions, brand storytelling, and collaborative environments.



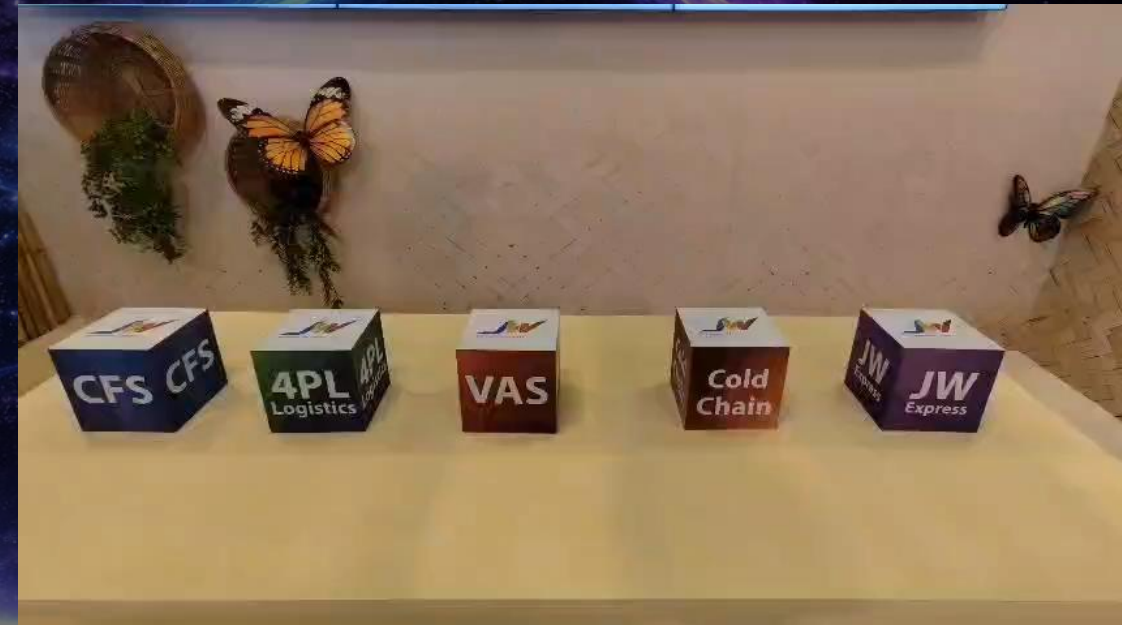
Reference Video

Pick and Play Interaction

This **RFID-Based Pick & Play Experience** transforms physical interaction into a seamless digital trigger. Visitors engage with real-world objects placed on a podium, and as soon as an item is picked up or moved, the system detects it through embedded RFID technology, initiating a connected digital response.

Each object is uniquely mapped to specific content, which is instantly displayed on a larger front-facing screen. This creates a direct and intuitive link between physical exploration and digital storytelling, allowing users to discover information, features, or narratives simply by interacting with tangible elements.

By combining tactile engagement with real-time visual output, the experience encourages curiosity, participation, and deeper understanding. It offers a powerful way to present products or concepts, making interactions more natural, memorable, and impactful in exhibition and experiential environments.



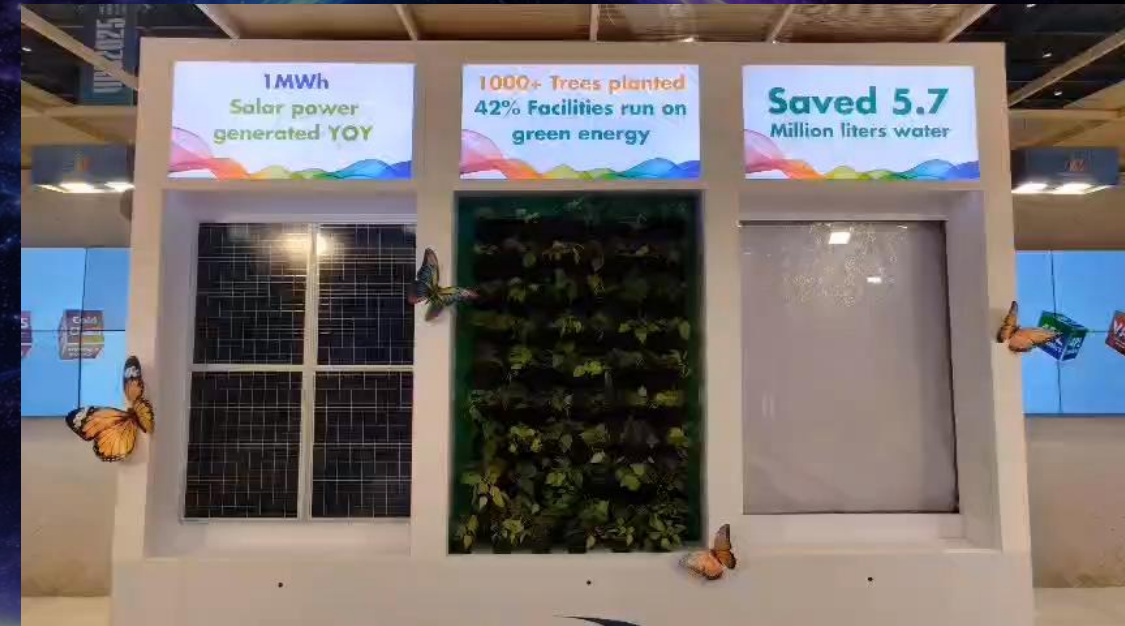
Reference Video

Interactive Stand and Light Up

This **Stand & Light-Up Experience** uses intelligent sensors to create a responsive environment where lighting reacts to user presence. As a person approaches a product showcase or display, embedded sensors detect movement and instantly activate LED strips or focused lighting around the relevant section.

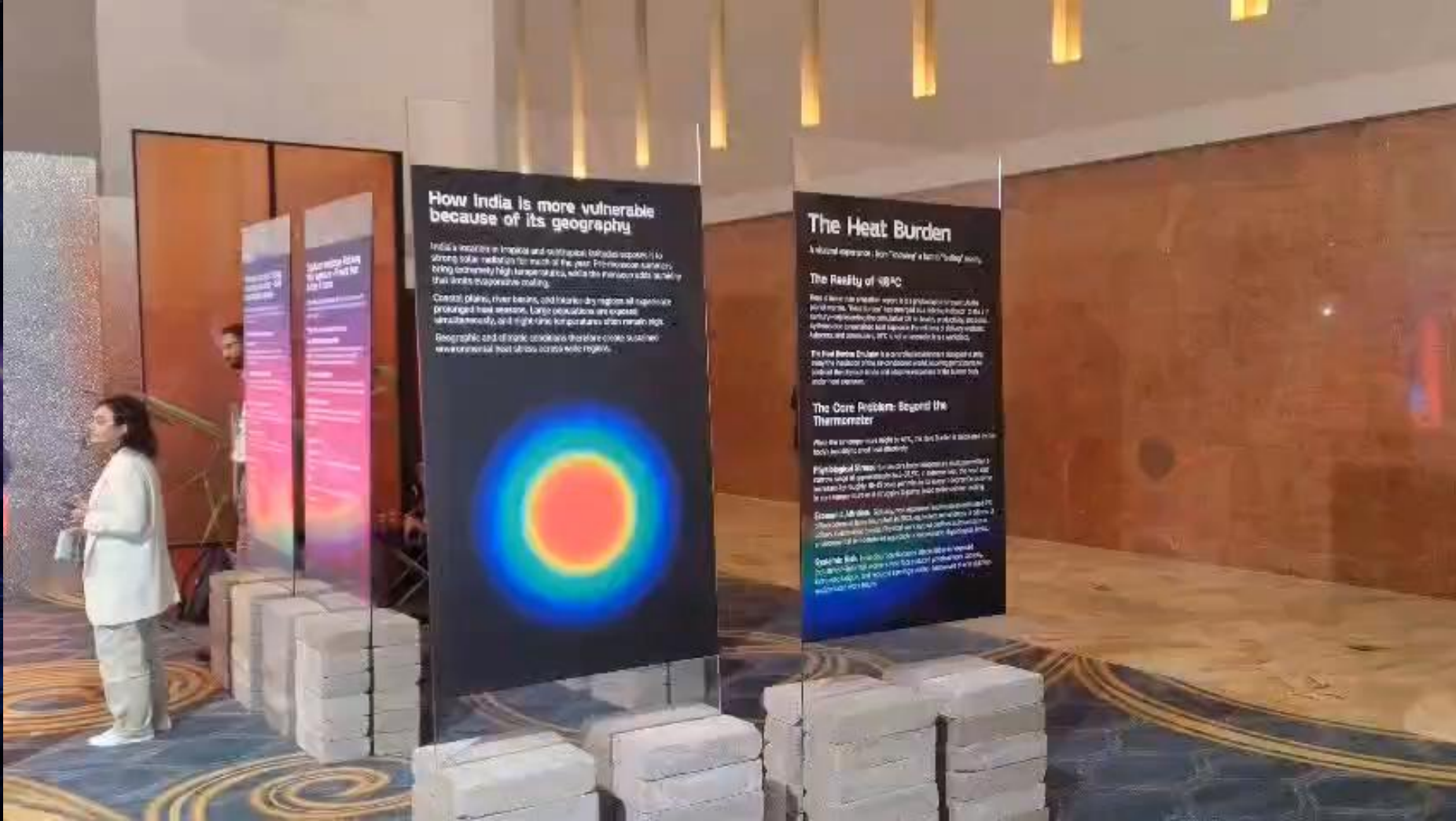
The system highlights products in real time, guiding attention and enhancing visibility without manual intervention. By illuminating specific areas based on user proximity, it creates a dynamic and intuitive interaction that draws visitors toward key features or zones within the display.

Designed to elevate engagement and spatial storytelling, this setup adds a layer of responsiveness to static environments. It not only improves product discovery but also creates a visually engaging experience that feels personalized, interactive, and aligned with modern smart display technologies.



Reference Video

Walk Through Climate Expo



Walk Through Sir Manohar Joshi Experience Centre



The background features a dark, futuristic landscape. The foreground is a flat, reflective surface with a glowing grid pattern of blue and purple lines that recede into the distance. The sky is filled with vibrant, ethereal energy waves in shades of purple, blue, and green. A prominent feature is a large, glowing ring of light in the upper right quadrant, composed of multiple concentric rings of energy. The overall atmosphere is one of high-tech, digital wonder.

Thank You