

GULF FIRE



Landing Valves & Breaching Inlets



KM 584537



GULF FIRE FIGHTING EQUIPMENTS FZE

P.O.Box 262329 Jebel Ali Free Zone, Dubai , United Arab Emirates

Tel: +971 4880 7127 - Fax: +971 4880 7604

Email: gulffirefze@yahoo.com - www.gulffire.com



The **GULF FIRE®** Landing Valves are manufactured according to the specifications of **BS 5041-1:1987** Standard and certified by **BSI** for **Kitemark®**. **GULF FIRE®** Landing Valves are suitable to install in Wet Riser System which have permanent Water supply and also in dry riser system. The inlet of the Landing Valves may be either Screwed or Flanged and the Outlets of all the models will be Female Instantaneous type as per **BS 336:2010**.



KM 584537

MODEL	Description
GF-LVRS	Right Angle Landing Valve , Inlet Screwed
GF-LVRF	Right Angle Landing Valve , Inlet Flanged
GF-LVHS1	Horizontal Landing Valve , Inlet Male Screwed
GF-LVHS2	Horizontal Landing Valve , Inlet Female Screwed
GF-LVHF	Horizontal Landing Valve , Inlet Flanged
GF-LVOS	Oblique Landing Valve, Inlet Screwed
GF-LVOF	Oblique Landing Valve , Inlet Flanged
GF-LVBS	Bib-Nose Landing Valve , Inlet Screwed
GF-LVBF	Bib-Nose Landing Valve , Inlet Flanged

TECHNICAL FEATURES:

Water Flow Rate	8.5 L/s @ Inlet Pressure 4.7 Bar, Outlet Pressure > 4 bar
Nominal Size	65 mm
Max. Working Pressure	15 bar
Test Pressure	Body : 22.5 bar , Valve Seat : 16 bar
Flanged	BS 4504 Part 2: 1974 Table : 16/21
Threaded	BS 21

MATERIALS FOR COMPONENTS :

Parts	Material
Body & Outlet	Copper Alloy , BS 1400 , LG2
Bonnet & Disk	Copper Alloy , BS 2872 , CZ 122
Stem	Copper Alloy , BS 2874 , CZ 121
Handwheel	Grey Cast Iron , BS 1452 , Grade 180



GF-LVRS



GF-LVRF



GF-LVOS



GF-LVOF



GF-LVBS



GF-LVBF



GF-LVHS1



GF-LVHF



GF-LVHS2

The **GULF FIRE®** Pressure Regulating Landing Valves are manufactured according to the specifications of **BS 5041-1:1987** Standard and certified by **BSI** for **Kitemark.®** **GULF FIRE®** Pressure Regulating Landing Valves are suitable to install in Wet Riser System which have permanent Water supply. The inlet of the Landing Valves may be either Screwed or Flanged and the Outlet will be Female Instantaneous Type as per **BS 336:2010**.

Technical Specification:

Model No	GF-HPVS (Screwed Inlet)	GF-HPVF (Flanged Inlet)
Water Flow Rate	8.5 L/s @ Inlet Pressure 4.7 bar, Outlet Pressure > 4 bar	
Nominal Size	65 mm	
Max. Working Pressure	20 bar	
Test Pressure	Body : 30 bar , Valve Seat Test : 22.5 bar	
Flanged Inlet	BS 4504 - 2: 1974 Table : 25/21	
Screwed Inlet	BS 21	
Outlet	Bib-nose Type 2.5" Instantaneous BS 336:2010	



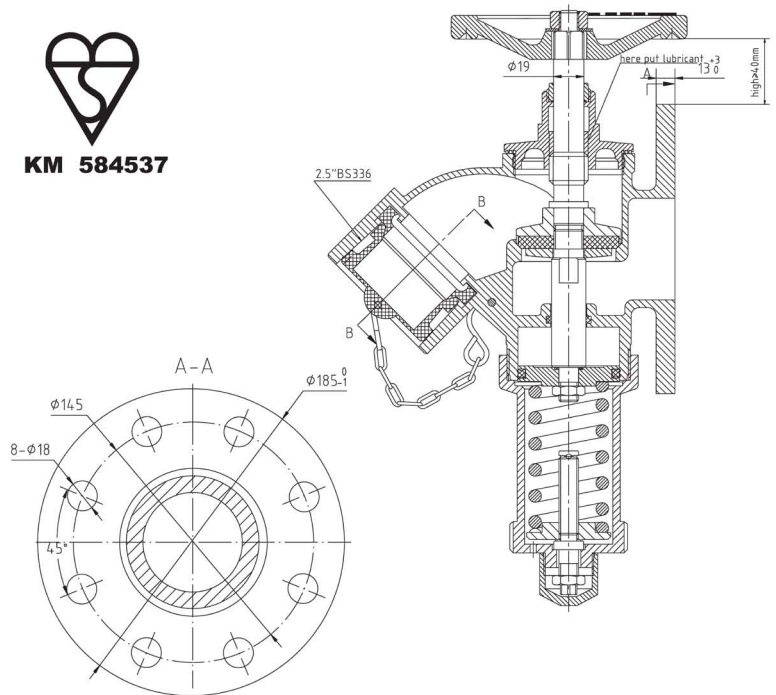
GF-HPVS



GF-HPVF



KM 584537



Materials For Components:

Parts	Material
Body & Outlet	Copper Alloy BS 1400 , LG2
Bonnet & Disk	Copper Alloy BS 2872 , CZ 122
Stem	Copper Alloy BS 2874 , CZ 121
Handwheel	Grey Cast Iron BS 1452 , Grade 180
Pressure Regulating Spring	Chrome Vanadium Steel BS 970-5 Grade 735 A50

The **GULF FIRE®** Breaching Inlets are manufactured according to the specifications of **BS 5041-3:1975** Standard and certified by **BSI** for **KITEMARK**. The Male Instantaneous connections do comply with **BS336:2010** and the drain valves comply with **BS 5154 PN 16**.

Technical Specification:

Model Nos.	GF-BI2W	GF-BI4W
Nominal Size	100 mm	150 mm
No. of Inlet Connection	2 Nos.	4 Nos.
Working Pressure	10 bar	
Test Pressure	20 bar	
Flange	BS 4504 - 2: 1974 Table : 16/21	



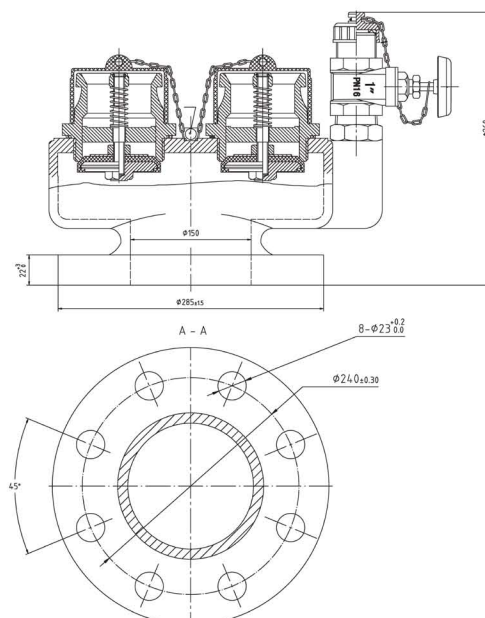
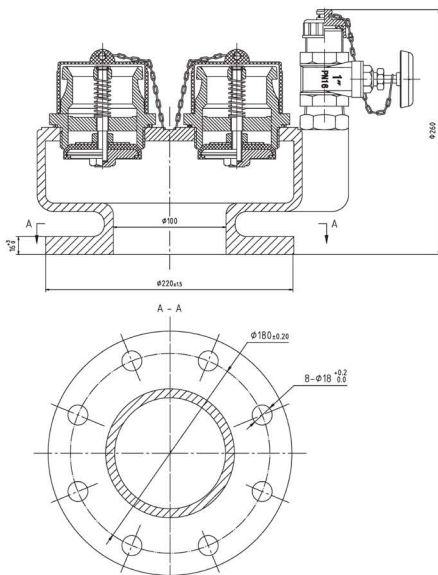
GF-BI2W



KM 584537



GF-BI4W



Materials for Components :

Parts	Material
Body	Spheroidal Graphite Iron to BS 2789
Valve Facings	Rubber to BS 1154
Inlet Connection & Non- Return Valve	Copper Alloy to BS 1400 LG2
Blank Caps for Valve Inlet	Plastic
Drain Valve	Copper Alloy to BS 1400 LG2