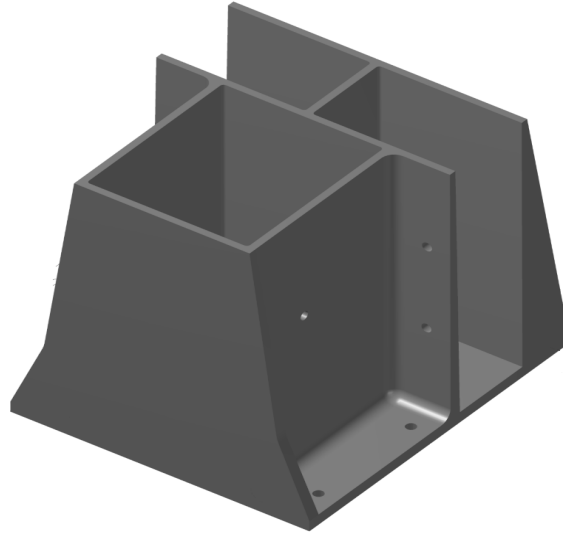


# G-BOOT FAQ



- 1. How much does each boot cost?**
  - A. Each boot costs \$21 and included the required fasteners to secure the boot into a wood nailer.**
  
- 2. How much does each G-BOOT weigh?**
  - A. Each plastic boot is easy to handle and weighs approximately 2.05 pounds.**
  
- 3. Is the G-BOOT reusable?**
  - A. Yes, you can reuse the G-BOOT. Prior to each installation, the boot should be inspected for crack, tears, breaks or other damage.**
  
- 4. G-BOOT cost vs. metal guardrail cost.**
  - A. Two G-Boots and 4 – 2x 4's, to make an 8-foot section, with labor costs approximately \$55. An 8 – foot section of metal guardrail, with two bases without labor, costs approximately \$155 plus shipping.**
  
- 5. What substrates can the G-BOOT be installed on?**
  - A. The G-BOOT can be used on new construction or existing buildings and installed directly onto 22-18Ga. metal deck, through a wood nailer and into metal deck and concrete. The competent person is responsible to ensure the substrate will support the intended load.**

