

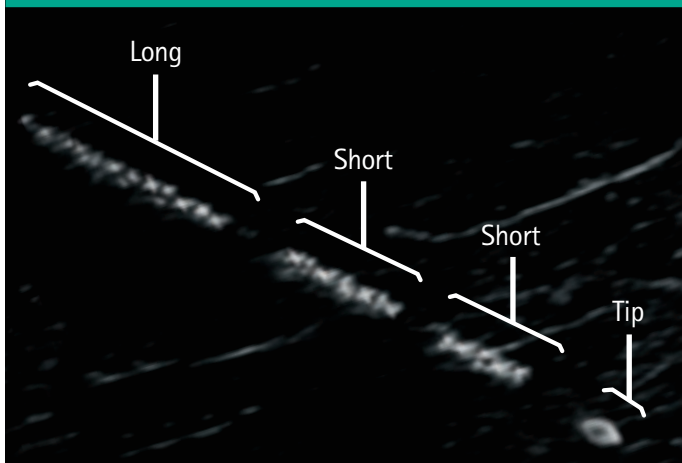
# EXCELLENT VISIBILITY WITHOUT COMPROMISE

STIMUPLEX® ULTRA 360®



# The neXt generation of PNB

## Safety Code



## User benefits

- Highly visible echogenic X-pattern facilitates clear needle visualisation
- Safety code enables easier identification of the needle and needle tip position
- Stimuplex® 30° bevel and insulation for optimal puncture and gliding behavior
- 360 degree X-pattern reflectors ensuring visibility from all sides

In our new Ultraline 360 range we invested all our knowledge and years of experience, creating a needle with excellent echogenic visibility without compromise. Ultraline 360 products provide enhanced visibility under the ultrasound with fewer artefacts while maintaining the well recognised puncture and gliding characteristics.

## Safety Code

The B. Braun Ultraline 360 product features the safety code designed to help locate needle tip in challenging nerve block conditions. The X-pattern is strategically applied on the first 20 mm of the needle shaft to create the three segmented code "short-short-long". This enables to distinguish between the needle tip and the upper needle shaft.\*

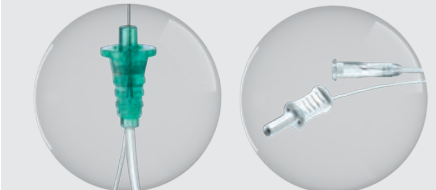
## Stimuplex® Ultra 360®

- For single shot nerve blocks performed under ultrasound and nerve stimulation
- Safety code with high visibility X-pattern reflectors
- Well-recognised 30° Stimuplex® bevel
- High quality low friction coating
- 50 cm long DEHP-free injection tubing

Stimuplex® Ultra 360® has ideal properties to perform an ultrasound guided peripheral nerve block and nerve stimulation. Due to high visibility of the X-pattern, needle is easy to visualise with minimum artefacts, even at steeper penetration. The 30° bevel together with a high quality coating provides excellent feel when advancing through tissue.



\*Please note that the visualisation of the safety code may depend on a number of factors such as proper setting of the ultrasound unit, patient related conditions of the tissue, artefacts and proper alignment of the US probe and the needle.

Stimuplex® Ultra 360° 	Article codes*	Product specifications		Sales unit / Pcs.
		ø (G) and Length (inch)	ø and Length (mm)	
	Needles with 30° bevel			
4892503-03	22 G x 1 <sup>3</sup> / <sub>8</sub> "	0.70 x 35	25	
4892505-03	22 G x 2"	0.70 x 50		
4892508-03	22 G x 3 <sup>1</sup> / <sub>8</sub> "	0.70 x 80		
4892510-03	20 G x 4"	0.90 x 100		
4892515-03	20 G x 6"	0.90 x 150		