

NEW

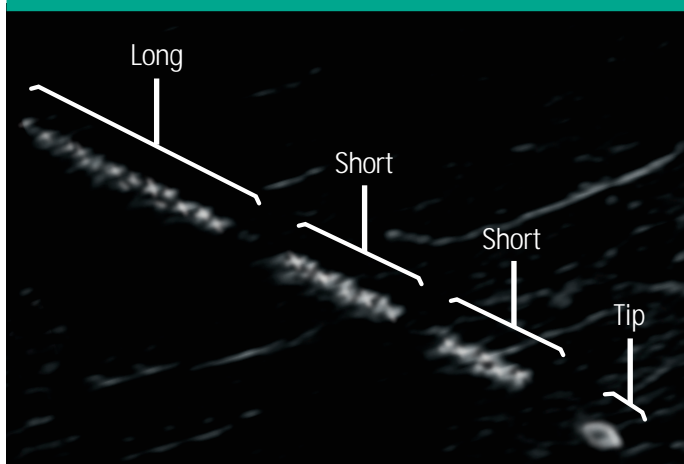


EXCELLENT VISIBILITY
WITHOUT COMPROMISE

ULTRAPLEX® 360

THE NEXT GENERATION OF PNB

Safety Code



User benefits

- Highly visible echogenic X-pattern facilitates clear needle visualisation.
- Safety code enables easier identification of the needle and needle tip position.
- Ultraplex® 360 30° bevel and insulation for optimal puncture and gliding behaviour.
- 360 degree X-pattern reflectors ensuring visibility from all sides.

In our new Ultraline 360 range we invested our knowledge and years of experience, creating a needle with excellent echogenic visibility without compromise. Ultraline 360 products provide enhanced visibility under ultrasound with fewer artefacts while maintaining the well recognised puncture and gliding characteristics.

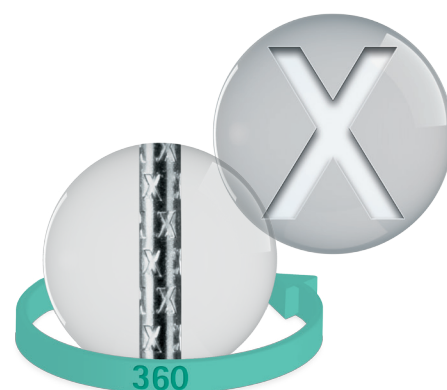
Safety Code

The B. Braun Ultraline 360 range features the safety code designed to help locate needle tip in challenging nerve block conditions. The X-pattern is strategically applied on the first 20 mm of the needle shaft to create the three segmented code "short-short-long". This enables to distinguish between the needle tip and the upper needle shaft.*


Ultraplex® 360

- For single shot nerve blocks performed under ultrasound.
- Safety code with high visibility X-pattern reflectors.
- Well-recognised 30° bevel.
- High quality low friction coating.
- 50 cm long DEHP-free injection tubing.

Ultraplex® 360 single shot needle is configured to meet the needs of clinicians who perform peripheral nerve blocks under ultrasound visualisation only. Due to high visibility of the X-pattern, the needle is easy to visualise with minimum artefacts, even at steeper penetration.



* Please note that the visualisation of the safety code may depend on a number of factors such as proper setting of the ultrasound unit, patient related conditions of the tissue, artefacts and proper alignment of the US probe and the needle.

Ultraplex® 360	Article codes*	Product specifications		Sales unit / Pcs.
		ø (G) and Length (inch)	ø and Length (mm)	
	Needles with 30° bevel			25
	4892603-01	22 G x 1 ³ / ₈ "	0.70 x 35	
	4892605-01	22 G x 2"	0.70 x 50	
	4892608-01	22 G x 3 ¹ / ₈ "	0.70 x 80	
	4892610-01	20 G x 4"	0.90 x 100	
	4892615-01	20 G x 6"	0.90 x 150	