



# TEMPLE RESTORATION HEALTH MINISTRIES



PRESENTS:

RAINBOW WATER



Swallow the Rainbow and  
Live!

Contact Information

Phone# 844-599-7644

HowMayWeServe@TempleRestoration.life

[www.TempleRestoration.Life](http://www.TempleRestoration.Life)



Powered By: Live Alkaline Spring Water Copyright©  
2023 Rainbow Water 8.0 LLC





*Temple Restoration Health Ministries provides many **HELPS** to **REBUILD & RESTORE** every **TEMPLE**.*

*We will share the **HELPS** we provide on the following pages.*

## Table of Contents

**Rainbow Water facts ----- Page 3**

**Rainbow Water pricing ----- Page 4**

**Rainbow Magic Moss Gels ----- Page 5**

**Herbal Rainbow Tonic Teas ----- Page 6**

**Temple Restoration helps ----- Page 7-14**

**PhotoTherapy-Stem Cell Activation Patches - Page 15-17**





We are **EARTH** and earth naturally contains **MINERALS**, however most people are **MINERAL** deficient and don't even know it.

**RAINBOW WATER** is a "NATURALLY ALKALINE" spring water sourced from our artesian springs located in Yadkinville, North Carolina on our over one thousand acres of indigenous ancestral land.

This "NATURALLY ALKALINE" and "**MINERAL RICH**" water has been emanating directly from the bedrock for over 150 years.

This bedrock that we call "**RAINBOW SOIL**" has been examined and found to be composed of several different layers of earth along with several different rock types including and not limited to biotite gneiss, granite and quartzite. Each having its own unique color and composition.

**RAINBOW WATER** is ALL NATURAL, 100% CHEMICAL FREE, H320 and sourced from an aquifer with springs that sit above a rainbow mineral soil bed.

**RAINBOW WATER** contains a natural PH Balance of 7.4 - 8.2 and has an alkalinity of 8.0.

Live Alkaline Water also has over that the body needs.

### 108 TRACE MINERALS

**RAINBOW WATER** has all the RESTORATIVE qualities that not only come from adequate **HYDRATION** of the body, but also from its Monoatomic composition which allows it to get into the **CELLS** and **TISSUE** for optimal usage of all the bioavailable **MINERALS** present.





# RAINBOW WATER PRICING



**20 FL. OZ - \$2.50 or (2 for \$4) \*Order online**

**1 liter/33.8 FL. OZ - \$3.50 or (2 for \$6) \*Order online**

---

**1 Gallon Plastic - \$5 \*Order online**

**1 Gallon Glass – Initial (Bottle and Water) \$23**

**\*Exchange/Water Refill - \$5**

---

**3 Gallons Plastic – Initial (Bottle and Water) \$38**

**\*Exchange/Water Refill - \$15**

**3 Gallons Glass – Initial (Bottle and Water) \$57**

**\*Exchange/Water Refill - \$15**

---

**5 Gallons Plastic – Initial (Bottle and Water) \$50**

**\*Exchange/Water Refill - \$25**

**5 Gallons Glass – Initial (Bottle and Water) \$70**

**\*Exchange/Water Refill - \$25**

---

**Manual Water Pumps (For 5 gallons- Not 3 gallon) - \$15**

**Electric Water Pumps (For 3 gallon and For 5 gallon) - \$20**

**Shower Filters - \$35**

**Shower Filter Replacement - \$12**

*\*With Exchanges/Refills we ask that you please bring in your plastic or glass bottle **WITH THE CAP/TOP** and all pieces to the CAP/TOP if possible. **There is a \$2 charge for missing "SCREW ON" caps/tops upon exchange/refill.***

**WE APPRECIATE YOU!**





# Rainbow Magic Moss (Gels)

## “FRUIT INFUSED/FLAVORED”

Price

**8oz -- \$17 16oz -- \$30**

1. **APPLE PIE (Golden Moss)** 2. **BAOBAB BERRY BLEND (Purple Moss)**
3. **MANGO PINEAPPLE PASSION (Full Spectrum Moss)**
4. **SOURSOP (GREEN Moss)** 5. **SUPER GREEN (Green)**



## “BASIC”

Price

**8oz -- \$15 16oz -- \$25**



All of our **Rainbow Magic Moss Gels** are made with our **RAINBOW WATER** and made without sugar.

Scan QR code to order online!

1. **Golden MOSS** 2. **Purple Moss** 3. **Purple & Golden Moss Mix**
4. **Green Moss** 5. **Full Spectrum Moss**





# RAINBOW TONIC TEAS



*“Come go on a ride with us and sample our **Rainbow Tonic Teas!**”*

**“BUTTERFLY PEA KIWI LEMONADE” - “SOURSOP DATE LEMONADE”**

16oz - \$5 16oz - \$5

64oz/half Gallon - \$20 64oz/half Gallon - \$20

(Equivalent to four 16oz) (Equivalent to four 16oz)



*(Combination of all 3 teas)*

**“SORREL/HIBISCUS GINGER CERESSE” - “MIXUP LUVUP”**

16oz - \$5 16oz - \$5

64oz/half Gallon - \$20 64oz/half Gallon - \$20 (Equivalent to four

16oz) (Equivalent to four 16oz)

All of our **Rainbow Tonic Teas** are made with our **RAINBOW WATER** and made without sugar.

**Ordering online Coming Soon!**

Email Us @

howmayweserve@templerestoration.life with any questions you may have





# TEMPLE RESTORATION HEALTH MINISTRIES



*“Temple Restorative Helps & More not listed”*

Scan QR code to order online!



**SPECIAL KOMBUCHA**  
1 Cup -- \$6



**INVINCIBLE POWDER (FOR MEN)**  
Small pack 15g -- \$20  
Large pack 30g -- \$40

**BUTTERFLY PEA (FOR WOMEN AND MEN)**  
Small pack 7.5g-- \$15  
Large pack 15g-- \$30

**EGYPTIAN BLUE LOTUS BLOSSOMS**  
1 Blossom -- \$1  
11g/12 Blossoms PACK -- \$10

**SOURSOP LEAVES**  
Small pack 15g -- \$15  
Large pack 30g -- \$30





**MORINGA POWDER**  
Small pack 100g -- \$15  
Large pack 200g -- \$30

**BAOBAB POWDER**  
Small pack 55g -- \$15  
Large pack 111g -- \$30

**MAGNESIUM BHB**  
2oz -- \$15

**SEAMOSS GUMMIES**  
60 Count -- \$25

**SEAMOSS CAPSULES**  
60 Count -- \$25

**GOLD, PURPLE & GREEN SEAMOSS ¼**  
Pound Pack -- \$18 (each pack)

**FULL SPECTRUM SEAMOSS**  
¼ Pound Pack -- \$18

**BLADDERWRACK**  
¼ Pound Pack -- \$17

**BLACK GARLIC BULB**  
1 Whole Bulb (Pack) -- \$5  
2 Small Whole Bulb (Pack) -- \$5

**SORREL/HIBISCUS**  
½ Pound Pack -- \$18



**CERASEE BITTER MELON**  
2.5oz Pack -- \$18

**SEA BUCKTHORN**  
2oz -- \$12

**MORINGA LEAVES**  
4oz Pack -- \$7

**HERBAL CLEANSE TEA**  
70g -- \$25

**PARASITE CLEANSE**  
101g Pack -- \$35

**COLON CLEANSE CAPSULES**  
Small pack 30 count -- \$20  
Large pack 60 count -- \$40

**ANTI-INFLAMMATORY CAPSULES**  
Pack 60 count -- \$45

**ESSENTIAL AMINO ACIDS**  
230g Pack -- \$17

**CELL ILLUMINATOR**  
Pack 71g -- \$40

**MSM (Increase Energy)**  
4oz Pack -- \$16

**DRIED ELDERBERRIES**  
3oz -- \$7







**MULLEIN LEAF**  
56g - 2oz Pack -- \$11

**NAC – (N-ACETYL L-CYSTEINE)**  
2.5oz -- \$9

**BREATHE EASY TEA**  
2oz -- \$11

**RAINBOW EYES (EYE DROPS)**  
1oz -- \$25

**MILK THISTLE**  
2oz -- \$7

**NETTLE LEAF**  
2oz Pack -- \$7

**SENNA LEAVES**  
3oz Pack -- \$8

**DANDELION LEAVES**  
3oz -- \$13

**DANDELION ROOT**  
2oz -- \$7

**BURDOCK LEAVES**  
2oz Pack -- \$8

**BURDOCK ROOT**  
4oz Pack -- \$9



**BURDOCK EXTRACT**  
2oz -- \$12

**CLEAVERS HERB**  
2oz -- \$9

**ORGANIC GELANTINIZED MACA ROOT POWDER**  
4oz Pack -- \$6.50

**HYDROSOLS**  
2oz Blue Lotus -- \$20  
2oz Butterfly Pea -- \$20  
2oz Hibiscus -- \$20  
2oz Indigo -- \$20  
2oz Elderflower -- \$20  
2oz Elderflower Lemon -- \$20  
2oz Yarrow -- \$20

**FO-TI ROOT POWDER**  
2oz -- \$7

**TONGKAT ALI**  
2oz -- \$11

**BLACK SEED POWDER**  
6oz Pack -- \$11

**BLACK SEED OIL**  
60ml -- \$7  
120ml -- \$11  
250ml -- \$18





**ACTIVATED CHARCOAL**

**2oz Pack -- \$9**

**ANGSTROM SILVER**

**2oz -- \$30**

**ANGSTROM IODINE**

**20z -- \$15**

**CASTOR OIL PACK – WOOL FLANNEL**

**\$20**

**MONK FRUIT SWEETNER**

**½ Pound Pack -- \$7**

**2 Pounds Pack -- \$20**

**ORGANIC DATE SYRUP**

**36oz -- \$12**

**ORGANIC AGAVE**

**36oz -- \$12**

**MAPPLE SYRUP GLASS**

**16.9fl.oz -- \$20**

---

**ORGANIC LEMON JUICE**

**1 LITER-33.8fl.oz -- \$11**

**RAW APPLE CIDER VINEGAR**

**32fl.oz -- \$11**

**APPLE CIDER VINEGAR CAPSULES**

**60 count -- \$25**

**Page 10**





## **"WHOLE WORLD BOTANICALS"**



**Royal Desdemonium Loose Tea**  
125g -- \$23

**Royal Desdemonium Extract**  
2oz -- \$22

**Royal Maca Capsules**  
60 Count -- \$20

**Royal Camu**  
70 Count -- \$18

**Royal Camu**  
140 Count -- \$36



**Royal Chanca Piedra Loose Tea**  
125g -- \$31

**Royal Chanca Piedra Capsules**  
120 Count -- \$37

**Royal Chanca Piedra KIDNEY BLADDER SUPPORT**  
1oz -- \$16

**Royal Chanca Piedra KIDNEY BLADDER SUPPORT**  
2oz -- \$25

**Royal Chanca Piedra KIDNEY BLADDER SUPPORT**  
4oz -- \$41





**Royal Chanca Piedra LIVER GALLBLADDER SUPPORT**

**1oz -- \$16**

**Royal Chanca Piedra LIVER GALLBLADDER SUPPORT**

**2oz -- \$25**

**Royal Chanca Piedra LIVER GALLBLADDER SUPPORT**

**4oz -- \$41**

**Royal Cats Claw Tea**

**140g -- \$23**

**Royal Cats Claw**

**4oz -- \$38**

**Royal Cats Claw**

**2oz -- \$22**

**Royal Lucraco Plus**

**4oz -- \$35**

**Royal Graviola**

**4oz -- \$35**



**Scan QR code to order online!**



**Page 12**



# "RAINBOW LOVE CLOTHING"



X



# Coming Soon!

---

Small/Medium/Large -- \$29  
XXL -- \$33





# PHOTOTHERAPY - LIGHT THERAPY

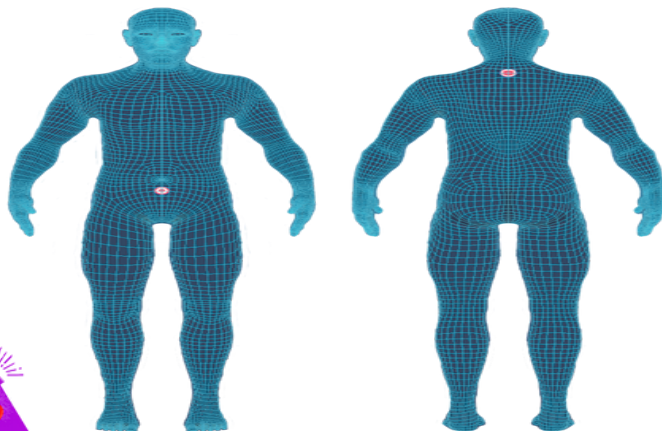


*(Photomodulation)*

To **experience** a level of **health** that you have not experienced since you were in your **youth**, ask us about our **safe, cost effective, non-invasive, chemical free STEM CELL ACTIVATION PATCHES** to **experience** these amazing **benefits** below.

**Benefits** can be **immediate** and it **goes to work** the minute you apply it!

- Rapid Pain Relief
- Better Sleep
- Improved Energy & Vitality
- Improved Skin Appearance
- Improved Hair Quality
- Reduced Inflammation
- Rapid Wound Healing
- Improved Mental Clarity
- Enhanced Sports Performance
- Faster Recovery from Exercise
- and Relief from other Health Issues



**Benefits**

The LifeWave X39™ patch is designed to elevate a copper peptide known to activate stem cells

- ↓ RAPID PAIN RELIEF
- 🧠 REDUCED INFLAMMATION
- 💡 SUPPORTS WOUND HEALING
- ⚡ ENERGY & VITALITY
- 🧠 MENTAL CLARITY
- 🏃 ENHANCES SPORTS PERFORMANCE
- 🔄 FASTER RECOVERY FROM EXERCISE
- 🔑 IMPROVED SKIN APPEARANCE





# WHAT TO EXPECT



*The First Few Days*

## **“4,000 Genes Begin to Reset”**

Within **24 hours** the **stem cell activation patch** begins to reset **3,000-4,000 genes** to a younger healthier state. People using the stem cell patches will experience an immediate effect through elevation of **antioxidants**, a decrease in **inflammation**, an increase in **energy** and **joy**.

~ Melinda H. Connors, DD, November 2020

*Within 1-3 Months*

## **“Physical Changes Occur”**

Activating your **stem cells** leads to an increase in **collagen** in the **skin** which **decreases wrinkles** and **increases hair growth**. Even if you don't feel the effects, rest assured, the new stem cells may be **regenerating** an **internal organ** or **tissue** before repairing something you feel.

*Within 3-6 Months*

## **“Active Stem Cell Repair”**

The pluripotent stem cells turn into any cell your body needs for repair. Your stem cells are now actively creating deep healing in your body and repairing damage caused by the aging process.

*Within 6-12 Months*

## **“Reverse Aging”**

"In a recent study, 14 out of 15 people lowered their vascular age by an average of 8 years after just 6 months of using X39."

"IT'S NOT ANTI-AGING, IT'S AGE REVERSING.

-David Schmidt, CEO, Inventor of LifeWave “





Come ask us about the **PREFERRED CUSTOMER PROGRAM!**

Preferred Customers receive a **90-day money back guarantee (MBG)** with **FREE sample packs** each month for 5 months. On the 6 month you get to choose 1 **FREE** full-size sleeve (30 count) of your liking from the sample packs and 1 **free** full-size sleeve X39. **THAT IS OVER 100 FREE PATCHES AND OVER \$350 RETAIL DOLLARS SAVED!**



**And more!**

**"WE ARE HERE TO SERVE YOU!"**







---

