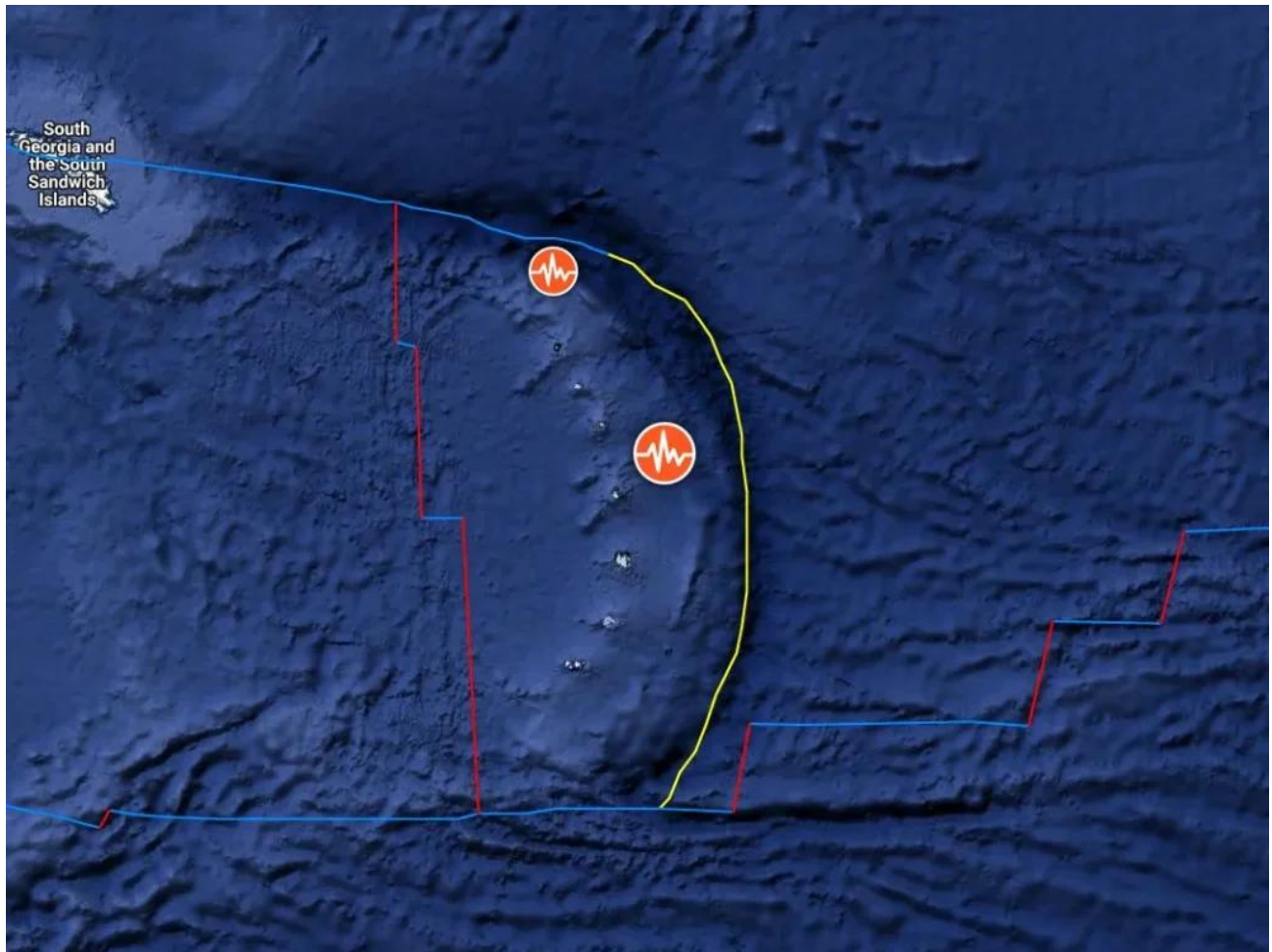


# M6.0 earthquake hits South Sandwich Islands region

Thursday, January 29, 2026

A strong earthquake registered by the USGS as M6.0 struck the South Sandwich Islands region at 07:30 UTC on January 29, 2026. The agency is reporting a depth of 74.7 km (46 miles). EMSC is reporting M6.0 at a depth of 26 km (16 miles). There is no tsunami threat from this event.



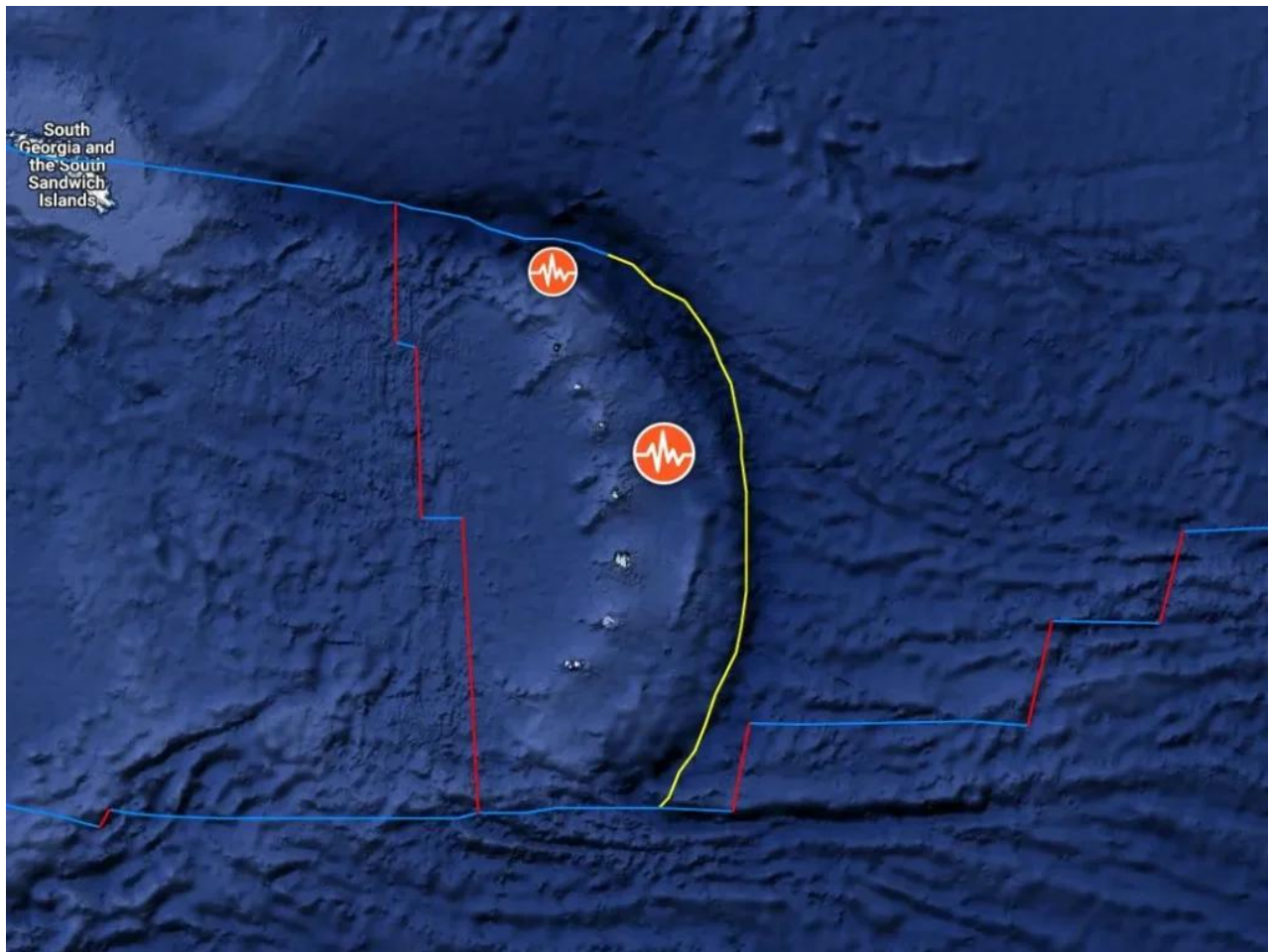
*Epicenter of M6.0 earthquake in South Sandwich Islands region on January 29, 2026. Credit: TW/SAM, Google*

The epicenter was located 2 485 km (1 544 miles) SSW of Edinburgh of the Seven Seas, Tristan da Cunha (population 271) and 2 592 km (1 610 miles) E of Ushuaia (population 56 825), Argentina.

There is no tsunami threat from this earthquake.

The USGS issued a Green alert for shaking-related fatalities and economic losses. There is a low likelihood of casualties and damage.

Overall, the population in this region resides in structures that are moderately resistant to earthquake shaking. The predominant vulnerable building types are reinforced concrete frames with unreinforced brick infill.



Epicenter of M6.0 earthquake in South Sandwich Islands region on January 29, 2026. Credit: TW/SAM, Google

## Estimated population exposure to earthquake shaking

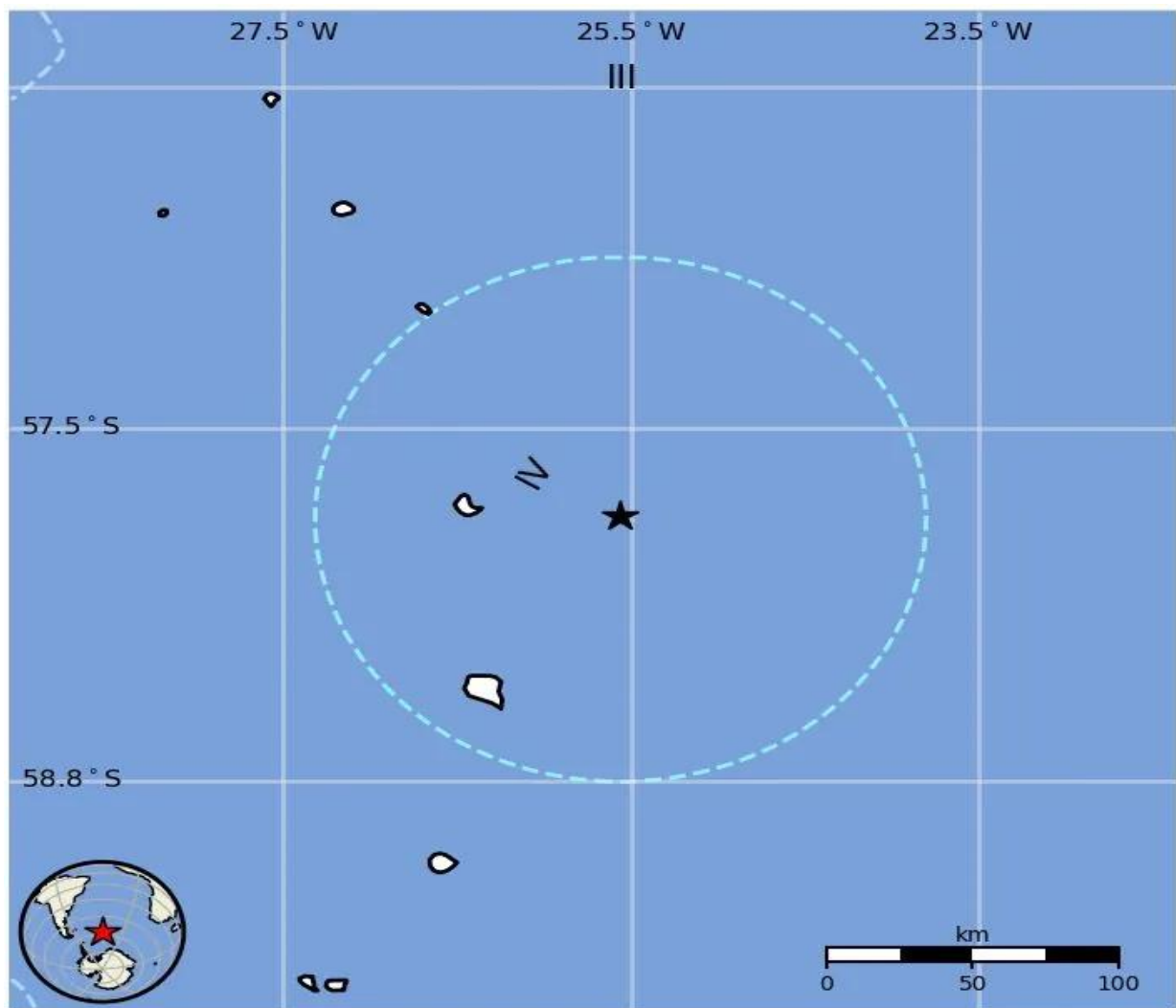


Image credit: USGS

MMI	Shaking	Population
I	Not Felt	0 k*
II-III	Weak	0 k*
IV	Light	0 k
V	Moderate	0 k
VI	Strong	0 k
VII	Very Strong	0 k
VIII	Severe	0 k
IX	Violent	0 k
X	Extreme	0 k



# Regional seismicity

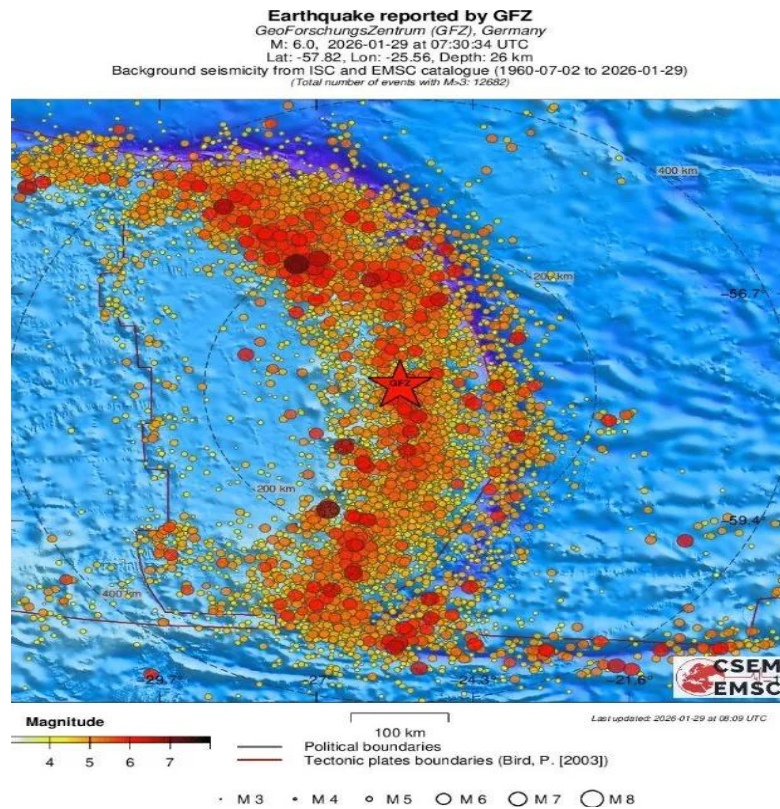


Image credit: EMSC