

Key Features Power Roller system

Manufactured in Canada

Automatic loading of dish racks

Ability to make 90 and 180 degree turns

Power rollers driven by stainless steel chain

All stainless steel with integral stainless steel bearings

1/3 horsepower variable speed drive motor

Serviceable from the top of the rollers

Power rollers can be integrated with other conveyor systems

eSafe approved panel

Unit supported on 1-5/8" diameter 16 gauge wall polished stainless steel tubular legs with fully welded 1-5/8" cross bracing

Tilt station configurations available

Low Amp draw – requires only 15 Amp breaker with 208/60/1

Key Features Belting system

Tray and Tray-less application

UHMW guides support the belt on the top and bottom side

All 304 stainless steel construction with a #4 finish

Belt wash system with removable scrap basket

Wash down 1/2 horsepower drive motor with

eSafe approved panel

Stainless steel drip pans run the length of the belt to catch any falling debris

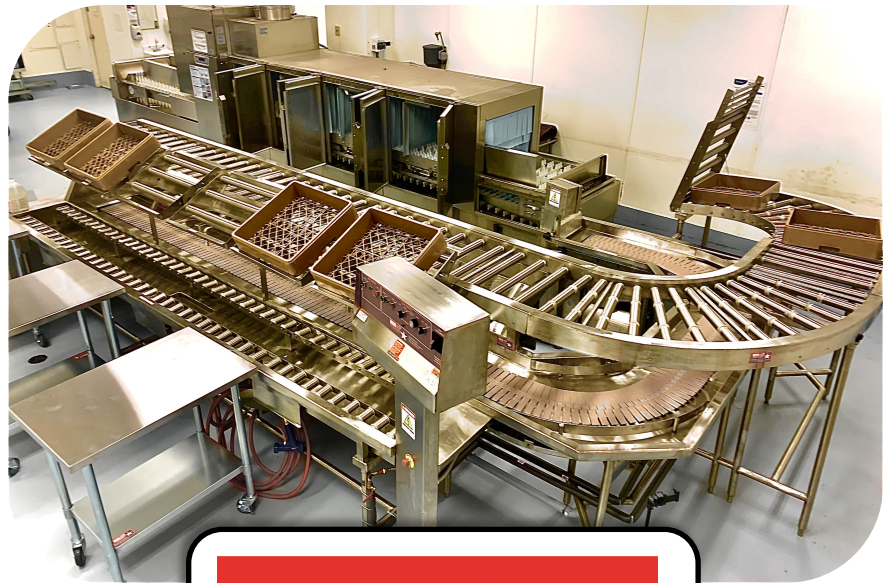
Adjustable speed control through AC inverter

Unit supported on 1-5/8" diameter 16 gauge wall polished stainless steel tubular legs with fully welded 1-5/8" cross bracing

Low Amp draw – requires only 15 Amp breaker with 115V/60/1

Belting options

- ◇ Single 7.5" Belt
- ◇ Single 10" Belt
- ◇ Single 12" Belt
- ◇ Dual 7.5" Belt
- ◇ Dual 10" Belt



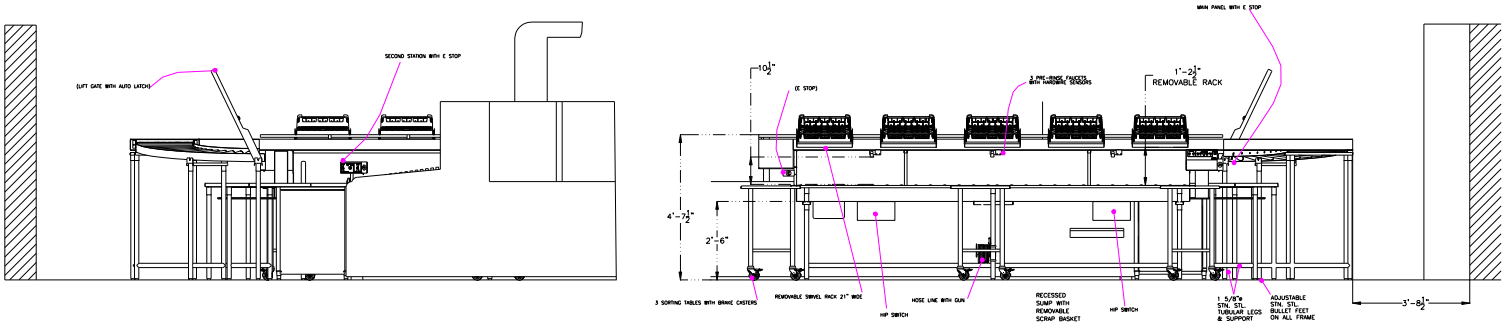
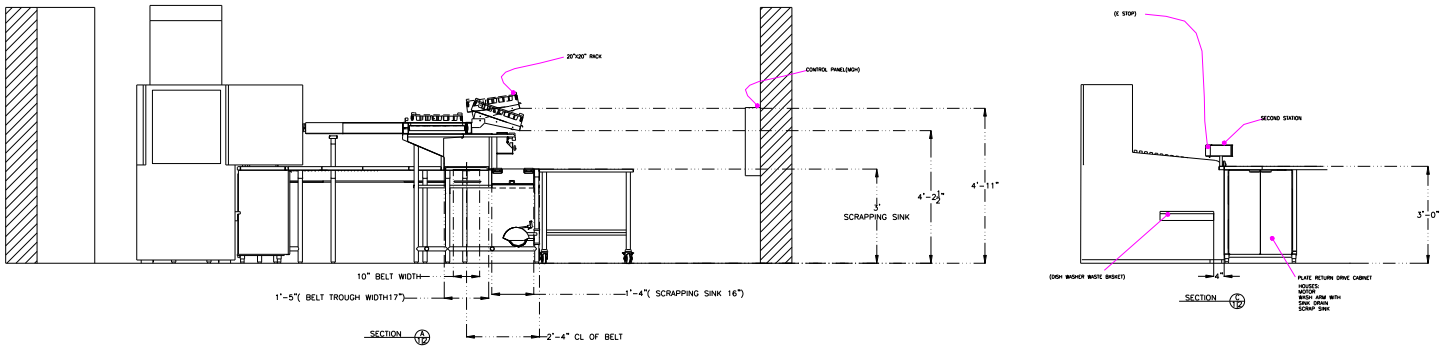
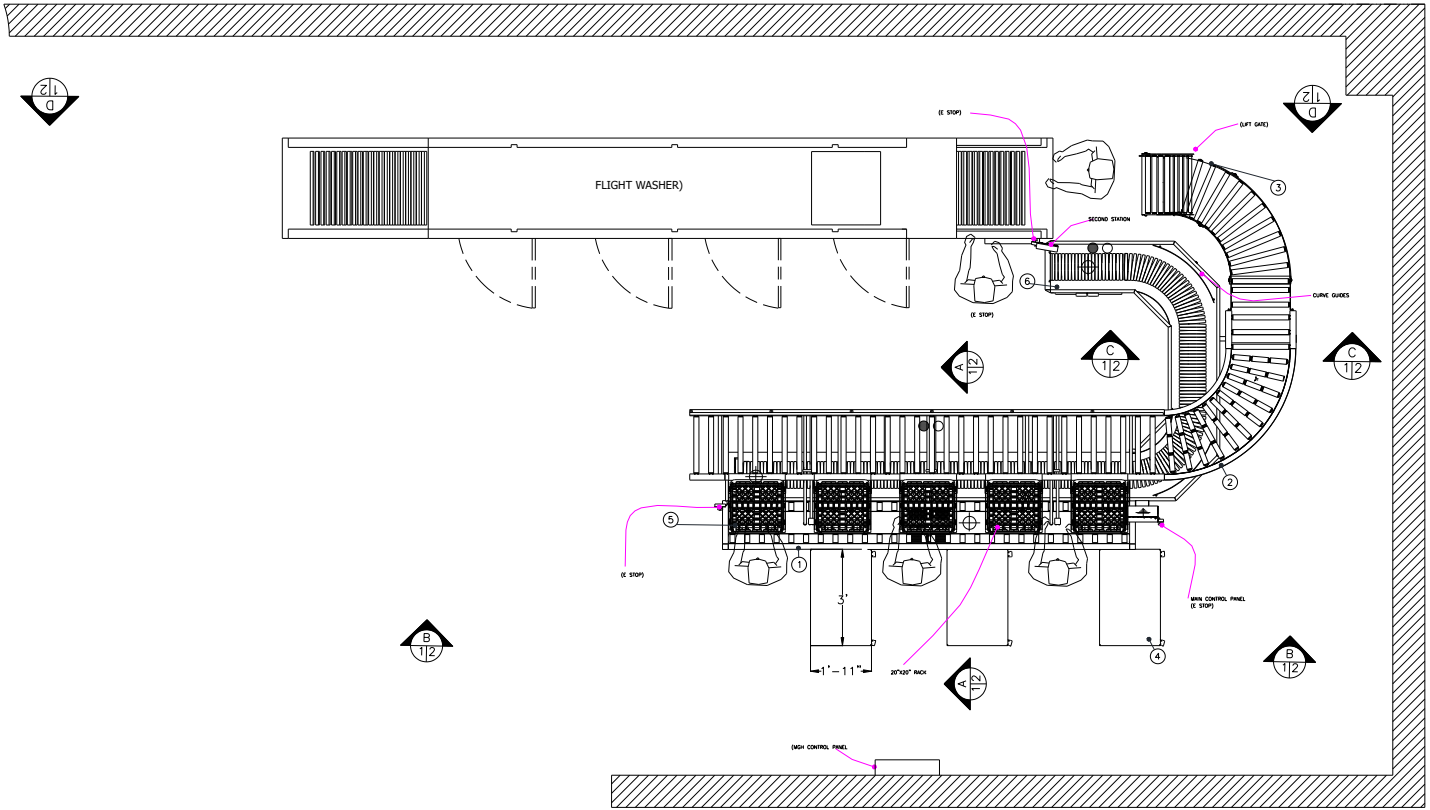
Endless options !

Combine your system to handle

- Trays
- Plates
- Cutlery

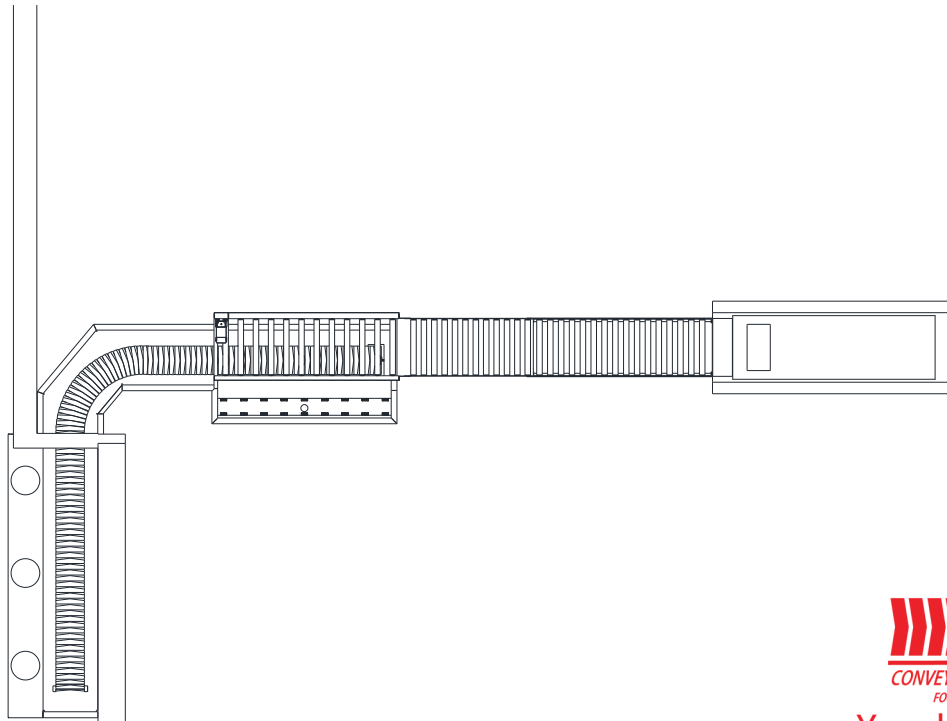
Using both power roller system it designed to transfer baskets in to any dish washing system.

Belt conveyor to withstand any downtown can be used with any flight system to transfer plates.



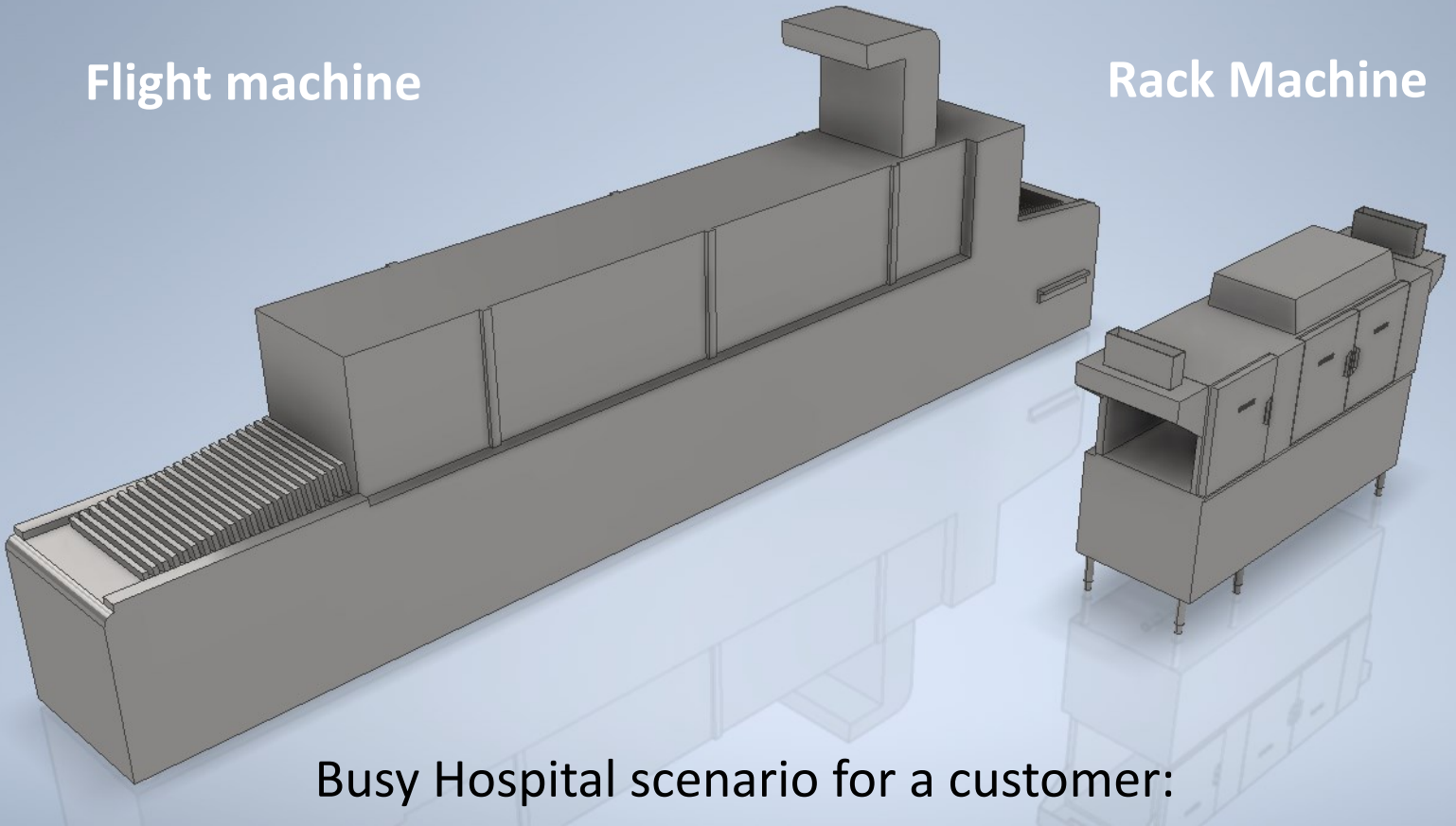


Typical Layout for Rack Machine



Flight machine

Rack Machine



Busy Hospital scenario for a customer:

Busy System typical senecio

- Fully integrated
- Accommodates a 500 bed hospital
- MGH below

"The recent installation of a new commercial flight dish machine (Hobart FT1023DE EGR BD) and flooring repairs have resulted in the decommissioning and removal of a 20 year+ scrapping table/soiled meal tray conveyor system.

The Purchaser is a 350 bed acute care hospital that provides approx. 1000 patient meal trays/day (30,000/month). The new scrapping table/soiled meal tray conveyor system is expected to process this capacity of soiled meal trays and components over 3, approximately 1 hour sessions (post breakfast, lunch, dinner) per day."

MGH word problem, simple

without our system, it would be scrapped on tables using

- 5-6 operators.
- IT TOOK 1.75 hours

ATP'S SYSTEM

- 3 OPERATPRS
- 1.5 HOURS ON FIRST DAY OF RUN!!!

Optional accessories with endless options.

- Tilt station
- Tables
- Pre rinse faucets
- Stub rollers
- Trough bridges
- Remote start stop
- Hip switches
- Scrapping Sink
- Powerful Cleaning brush
- 30ft hose and spray nozzle

