

Roller Conveyor

**STANDARD FEATURES:**

- All stainless steel frame and body construction
- Easily removable sectional roller assemblies
- 15" plastic rollers with a 2" diameter
- Equipment supplied to UL standard TUV-ESAFE

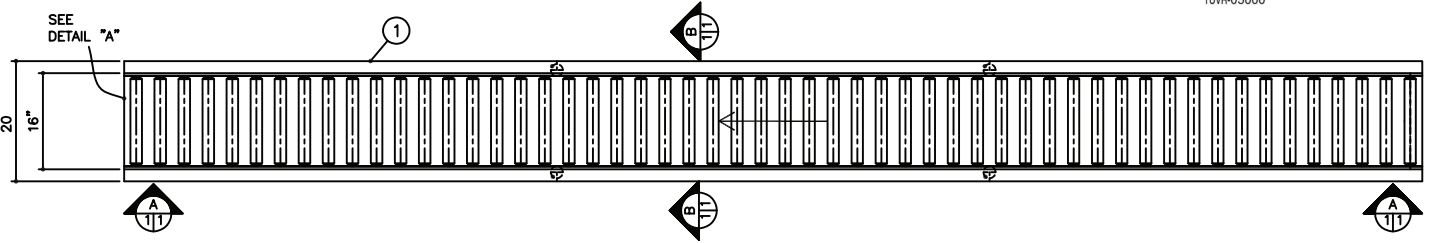
**OPTIONS:**

- RACEWAY- Receptors- customer to determine
- CASTERS 5" diameter stem type casters with brakes

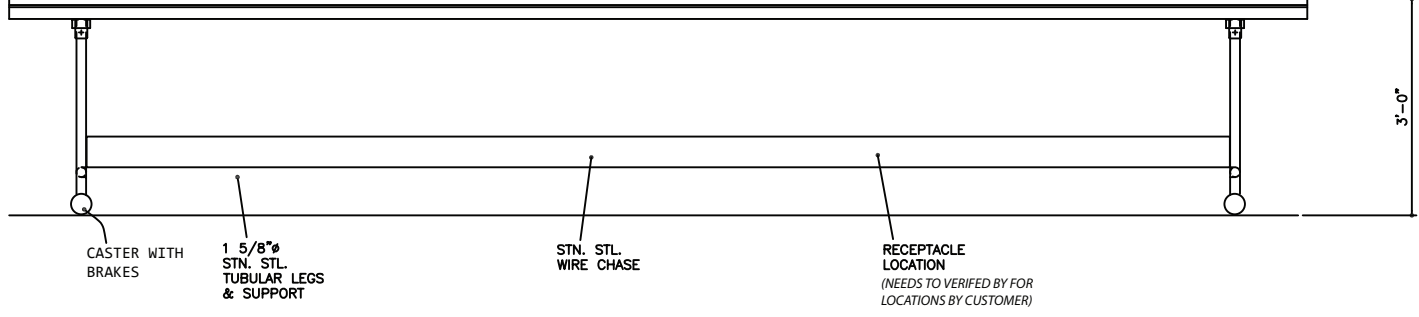
ATP Part #	O.A.Conveyor Length	Shipping* Weight
RARC-10	10' (3.1 m)	600 lbs. (272 kg)
RARC-12	12' (3.7 m)	670 lbs. (304 kg)
RARC-14	14' (4.3 m)	740 lbs. (336 kg)
RARC-16	16' (4.9 m)	790 lbs. (358 kg)
RARC-18	18' (5.5 m)	860 lbs. (390 kg)
RARC-20	20' (6.1 m)	920 lbs. (417 kg)
RARC-22	22' (6.7 m)	990 lbs. (449 kg)
RARC-24	24' (7.3 m)	1130 lbs. (513 kg)
RARC-26	26' (7.9 m)	1200 lbs. (544 kg)
RARC-28	28' (8.5 m)	1260 lbs. (571 kg)
RARC-30	30' (9.1 m)	1340 lbs. (608 kg)

\*Approximate without raceway

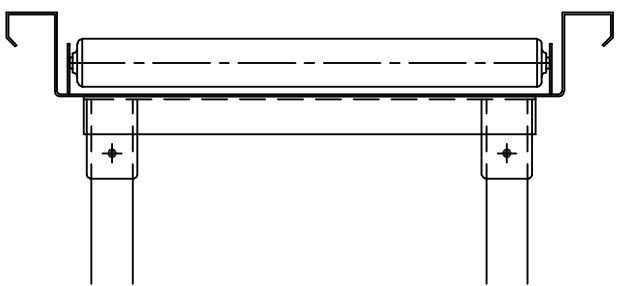
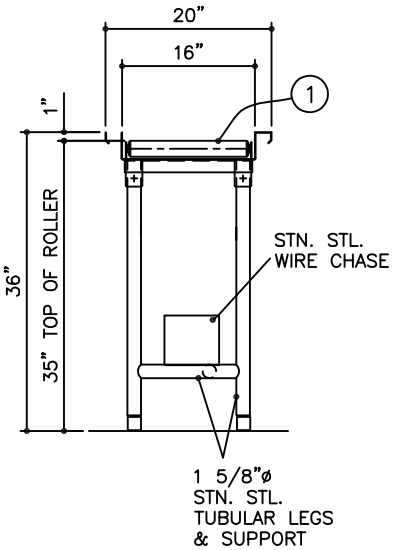
FIELD EVALUATED EQUIPMENT  
This equipment complies with the specific ANSI/UL standards for safety noted in the Field Evaluation report, limited to electrical fire and shock hazards.  
TUVR-05000



----OA---- SEE CHART



ELEVATION



DETAIL "A" - ENDCAP  
(NOT TO SCALE)

SECTION