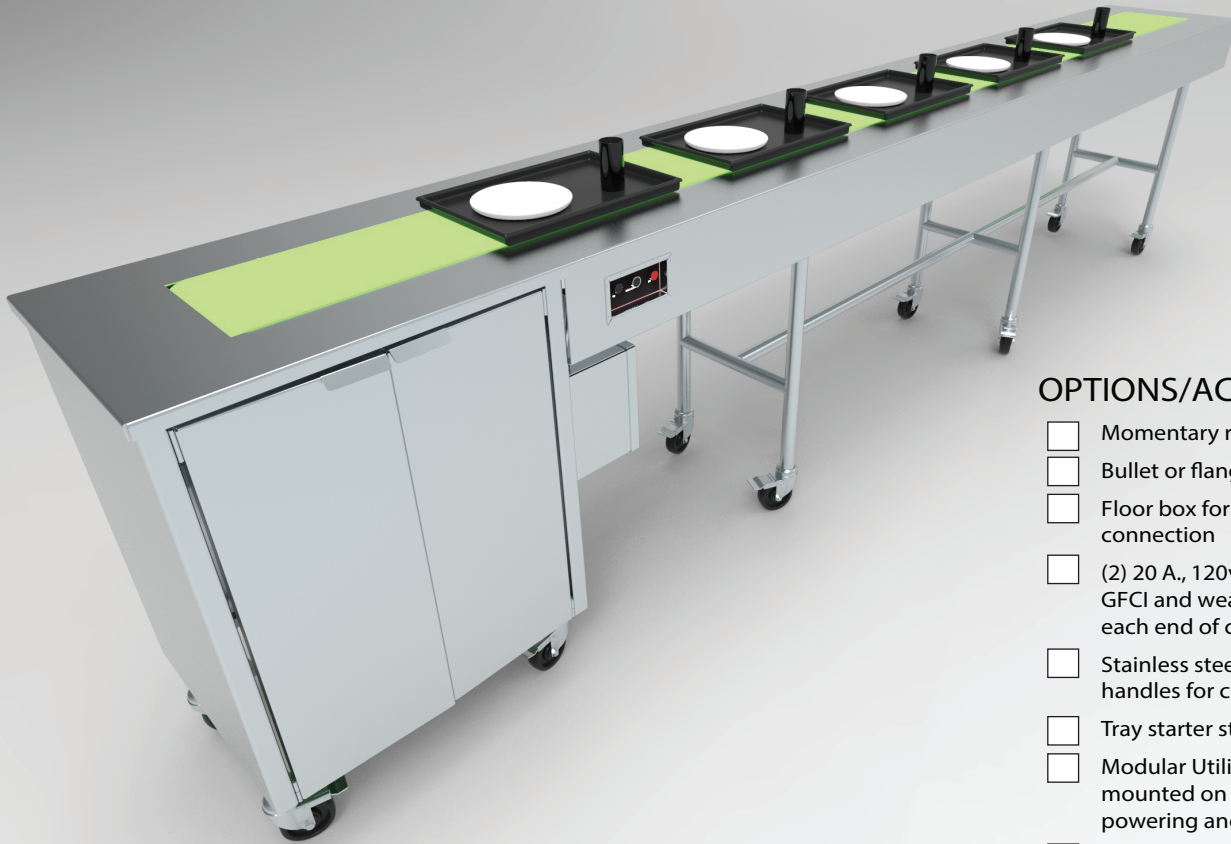




TELL: 289-684-5858



OPTIONS/ACCESSORIES:

- Momentary run foot switch
- Bullet or flanged feet
- Floor box for main power connection
- (2) 20 A., 120v., 1Ø outlets with GFCI and weather-proof covers at each end of conveyor
- Stainless steel, lift-off cover with handles for covering unit
- Tray starter station
- Modular Utility Distribution system, mounted on cross-members for powering ancillary equipment
- Single sliding overshelf
- Double sliding overshelf

Power options

- 120 volt-1ph-15amp
- 208 volt-1ph-15amp

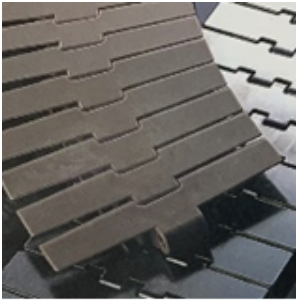
TM1000

TRAY MAKE UP MOST RELIABLE SYSTEM

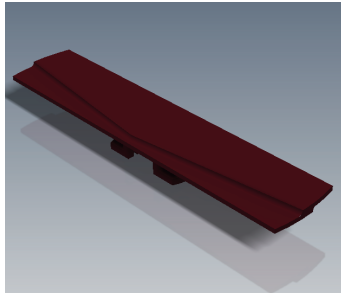
The ATP Model TM1000 is fabric belt conveyor utilized for tray or plate assembly lines. The design allows for an 8-5/8" conveyor profile. The conveyor uses a PVC impregnated fabric belt to move trays and/or plates through the tray assembly or banquet plating operation. The belt material is durable and easily cleaned. The unit may be specified with a Modular Utility Distribution system for powering ancillary equipment, such as hot food tables or portable refrigeration units.

TRAY MAKE UP

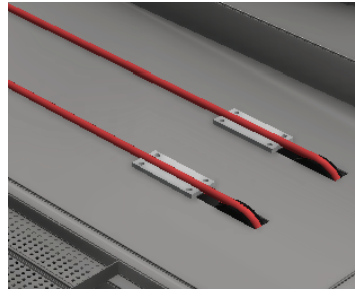
BELTING OPTIONS



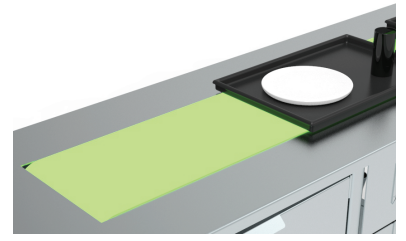
Slat type
with no chain



Slat belt with
stainless
steel roller chain

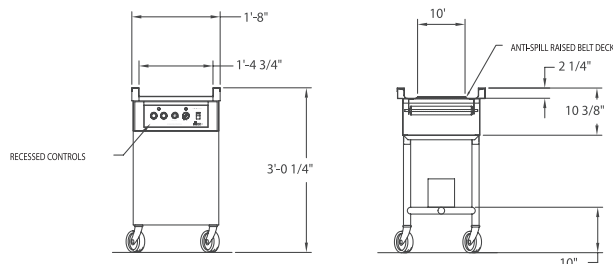
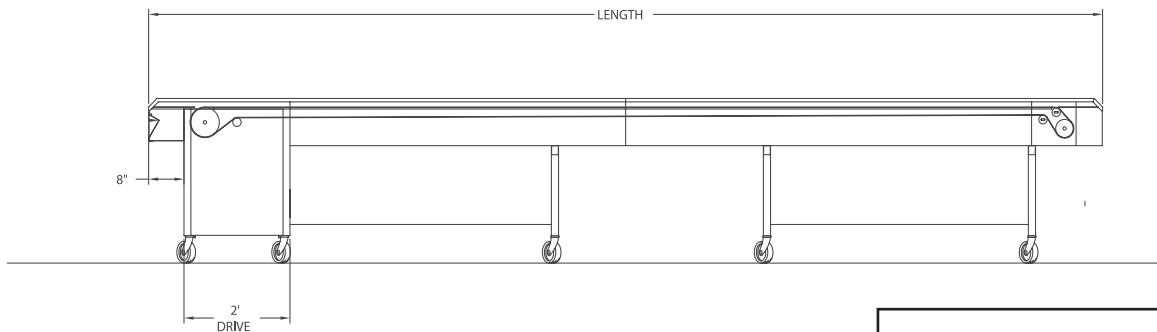
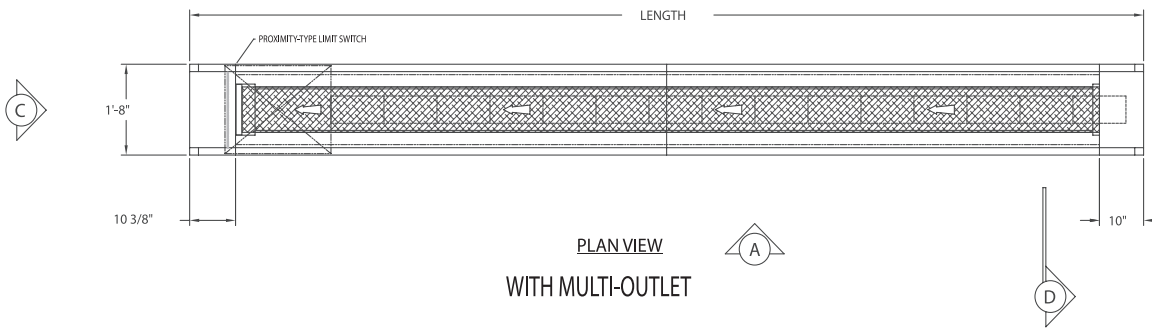


Polycord



Neoprene
fabric belt

Note: all belts ATP systems are designed for ANY food service environment.



ATP Part #	O.A.Conveyor Length	Shipping* Weight
ARC-10	10' (3.1 m)	600 lbs. (272 kg)
ARC-12	12' (3.7 m)	670 lbs. (304 kg)
ARC-14	14' (4.3 m)	740 lbs. (336 kg)
ARC-16	16' (4.9 m)	790 lbs. (358 kg)
ARC-18	18' (5.5 m)	860 lbs. (390 kg)
ARC-20	20' (6.1 m)	920 lbs. (417 kg)
ARC-22	22' (6.7 m)	990 lbs. (449 kg)
ARC-24	24' (7.3 m)	1130 lbs. (513 kg)
ARC-26	26' (7.9 m)	1200 lbs. (544 kg)
ARC-28	28' (8.5 m)	1260 lbs. (571 kg)
ARC-30	30' (9.1 m)	1340 lbs. (608 kg)

*Approximate without raceway