



Schools, Settings and Statutory Services - Pricing Guide 2024/25

✓ Staff training and CPD

✓ Staff Wellbeing

✓ Consultancy

- Supporting children and young people's Social, Behavioural, Emotional and Wellbeing Needs.
- Improving Outcomes for Vulnerable Pupils and Children in Care.

✓ Parent Workshops & Parenting Support



Staff Training and CPD

- Tailored in person training and activities to meet the needs of your staff team.
- Interactive staff handbook provided to each participant following the session detailing content covered as well as further learning, relevant resources and activities to try.
- Staff feedback collected and shared with SLT.



Staff Wellbeing

I offer a range of bespoke workshops and programmes to support and promote the emotional health and wellbeing of school staff.

Destined for Greatness staff wellbeing sessions aren't your average 'box ticking' corporate wellness events. I balance the research with practical tips, activities, strategies and supports and share my own experiences along the way!

Most Popular		
1/2 day	Full day	In school, after school or Twilight
£500 up to 3 hours	£900 up to 6 hours	£250 up to 1.5 hours

Choose from our most popular packages [HERE](#)
or [GET IN TOUCH](#) to discuss your school/setting needs.

please note above pricing applies for up to 50 staff, 50+ staff - 20% additional cost applies. I am happy to work with staff groups from multiple settings. Where travel is required an additional cost may be incurred.



Consultancy

- Supporting children and young people's Social, Behavioural, Emotional and Wellbeing Needs.
- Improving Outcomes for Vulnerable Pupils and Children in Care.

A solution focused approach to identifying, understanding and supporting pupils needs and assisting school staff to implement evidence based reasonable adjustments and bespoke interventions and supports that promote the best interests of the child.

£50 per hour, invoiced monthly OR following agreed piece of work

please note that all fees are payable at £50/hr spent carrying out this service. This is to include: direct contact, travel to/from the contact, telephone calls, emails, consultation with other professionals, action planning and review reading and evaluating information and report writing.



Extraordinary Educators

Extraordinary Educators @ Destined For Greatness NI, is a community for modern educators to support each other, share resources, and promote good practice.

At Extraordinary Educators you'll find
CPD and Further Learning
Support for your wellbeing
Resources, advice and signposting

Find out more [HERE](#)

Workshops for parents and carers

£400/ 2 hours

*please note pricing
applies for up to 100
participants - for 100+
20% additional cost
applies. I am happy to
work with groups from
multiple settings. *Where
travel is required an
additional cost may be
incurred.*



Parent Workshops

- Choose from ready made parenting and wellbeing workshops or tailor to the needs of your school community.
- In person and online options.
- Information provided prior to session for school website/ social media
- Interactive handbook provided to each participant following the session detailing content covered as well as further learning, relevant resources and activities to try at home.
- Parent/carer feedback collected and shared with SLT.
- Many schools part fund and charge a small fee to parents/carers attending.



Parenting Support

Collaborating with parents and caregivers to ensure the best outcomes for our learners.

I offer -

- 1 to 1 parent consultation and coaching - online or in person options
(from £25 per session)
- Small group parenting workshops and programmes tailored to meet the needs of your setting
- Parenting 'drop in' sessions
- A range of coaching, workshops and programmes on the parents and carers section of my website

GET IN TOUCH to discuss your school/setting needs.

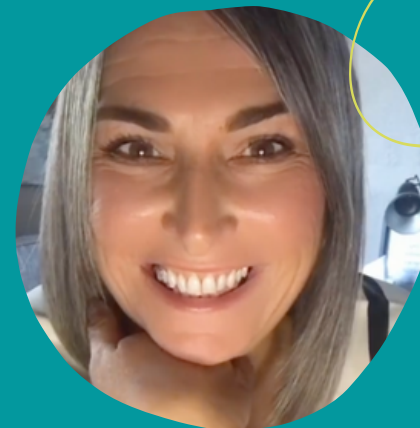
www.destinedforgreatnessni.com

Empowering parents and educators to help kids grow up GREAT!

Payment, refunds and cancellations.

Invoices are issued monthly OR once your training, workshops or other services had been delivered, these are payable by bank transfer or cheque within 30 days of issue.

For schools in NI - I am already a registered provider on EANI I-procurement.
For refunds and cancellations, visit my website.



Why choose me?

I've walked the talk -

20+ years practical experience understanding and supporting children and young people experiencing significant and substantive Social, Behavioural, Emotional and Wellbeing needs, their schools and their families.

20+ years experience in EANI Behaviour Support Service and EOTAS, KS1-KS4 including 12 years managing an EOTAS Provision.

12 years Safeguarding and Child Protection Lead

Specialist in SBEW Needs and promoting and implementing Trauma Informed and Nurturing Practice.

Registered with GTCNI and ACCESS NI checked.

Outstanding - ETI Inspection Report