

# Series 700

## Curtain Wall System

### Product Description

The **Sun Metals Series 700 Curtain Wall** is a 7" unitized curtain wall system that retains a heavy commercial and architectural grade rating. The **Series 700** is available thermally-broken as well as impact-rated, and can accommodate various glass types and thicknesses. The system is pre-glazed in a controlled shop environment and shipped to the glazing contractor for efficient unitized installation to drive the project schedule.

### Product Features

- **Pressure Equalized** system with exceptional thermal, air and water performance
- Poured and debridged polyurethane **Thermal Break**
- Units are **Pre-Glazed** in quality controlled shop environment
- Accelerate the project schedule with **Unitized** installation
- **Chicken Head Starter** technology dead-loaded at the head
- Stack Joint accommodates building movement while anchor allows for significant adjustment & tolerance
- Available **Impact-Rated**
- **On-Time** Production and Delivery
- Industry-leading **Engineering, Project Management** and **Customer Service**

## Product Options:

- **Captured** or **2-Side** and **4-Side Structurally Glazed** available
- Standard vents or multi-lock insert **Zero Sightline** vents available
- **Standard** or **Custom Systems** available with integrated sunshades, fins, metal panels, louvers, face caps, shadow boxes, and other accessory items
- Available with monolithic, insulating or insulating laminated glass



# Series 700

## Curtain Wall System



### Performance Data

### Fixed Thermal

Air Infiltration @ 6.24 psf

0.05 scfm/ft<sup>2</sup>

Water

15 psf

Design Loads

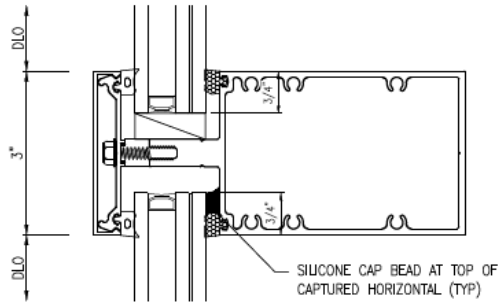
+/-75 psf

Forced Entry

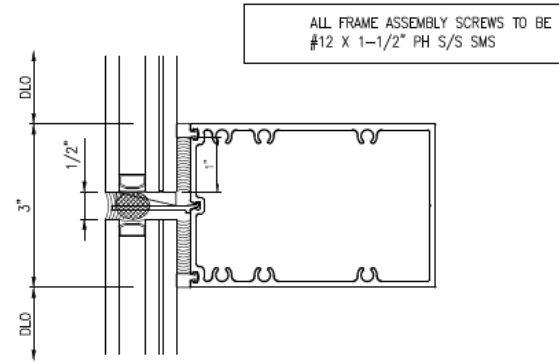
10

U-Factor

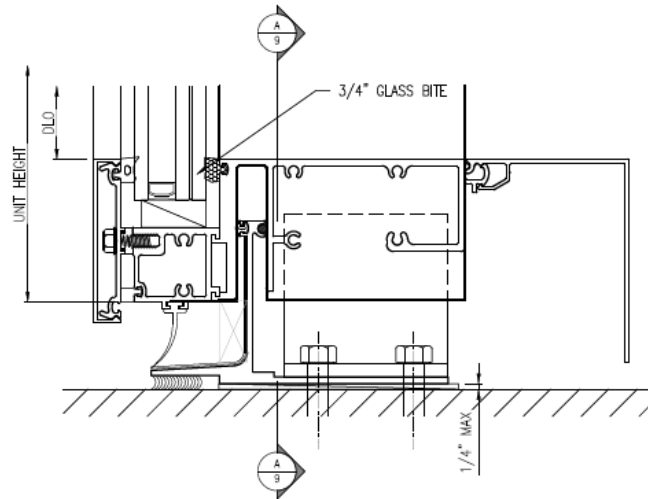
.38-.55 btu



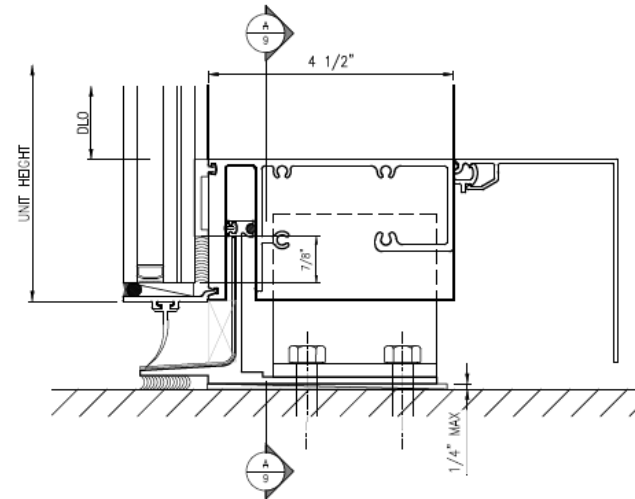
2 HORIZONTAL (CAPTURED)  
Scale: 6" = 1'-0"



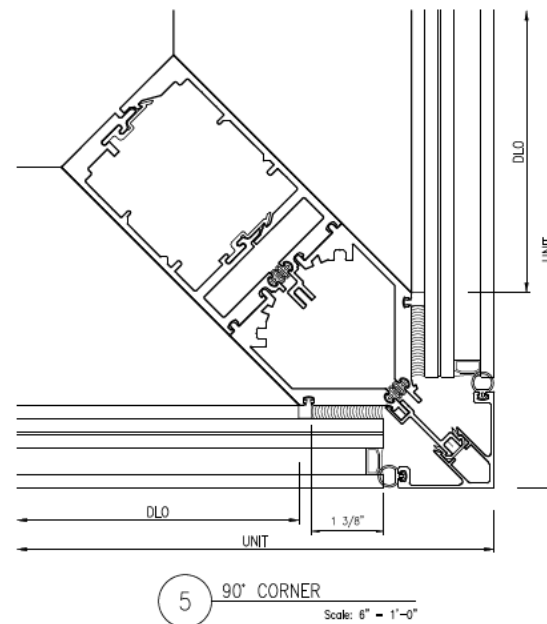
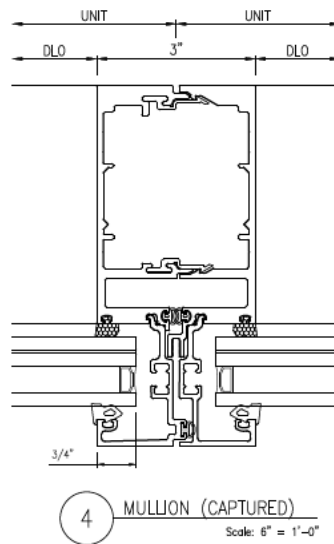
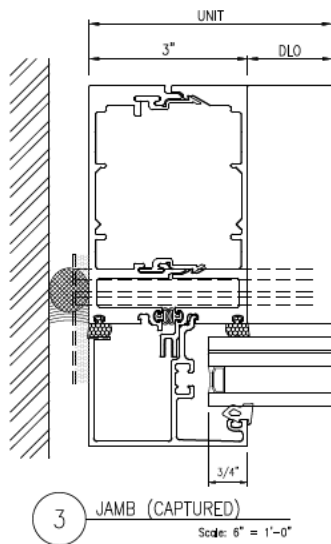
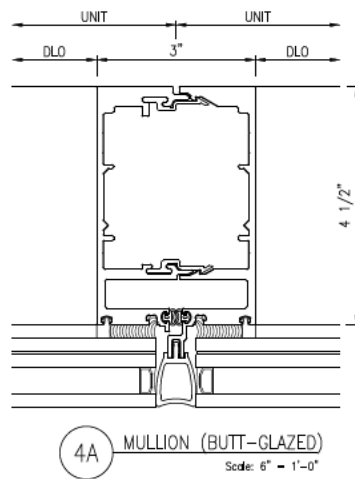
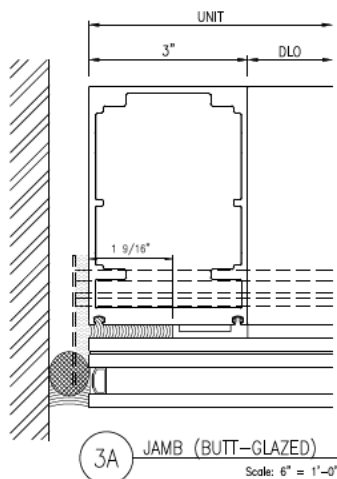
2A HORIZONTAL (BUTT-GLAZED)  
Scale: 6" = 1'-0"

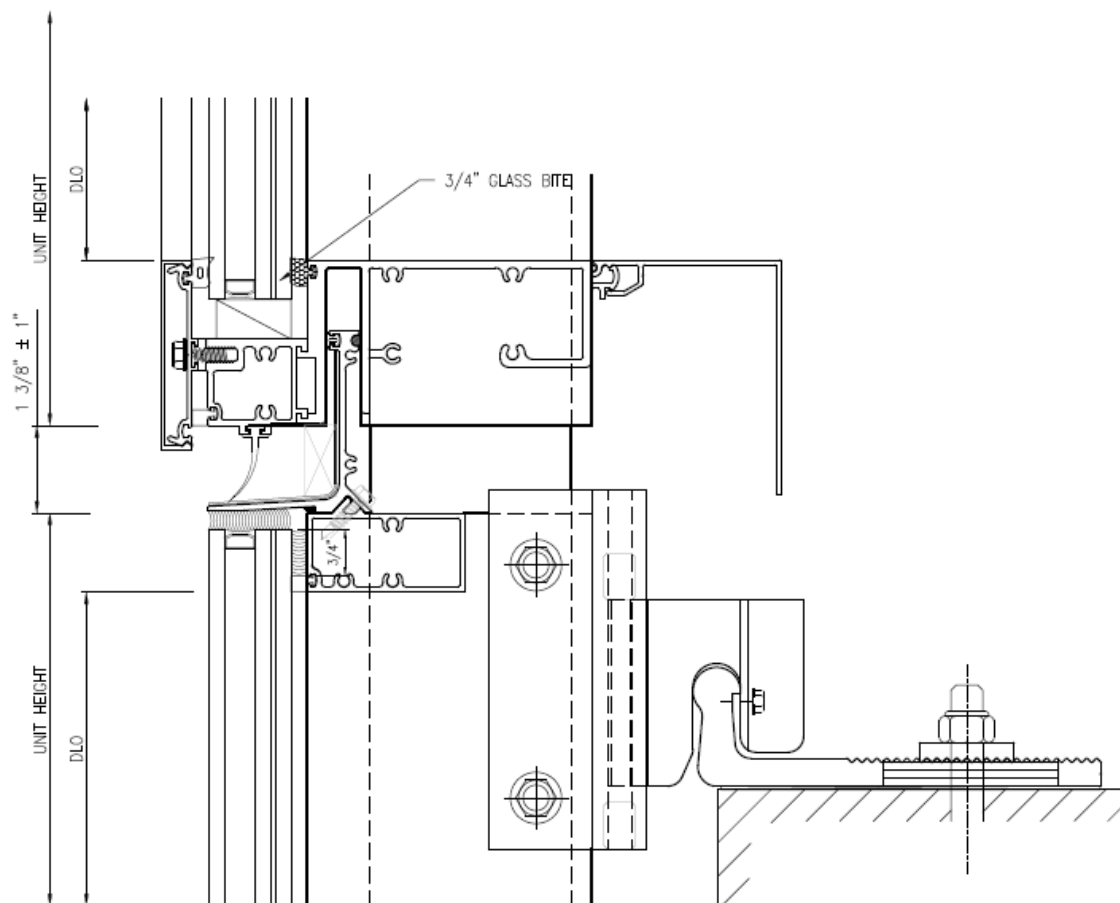


1 SILL (CAPTURED)  
Scale: 6" = 1'-0"

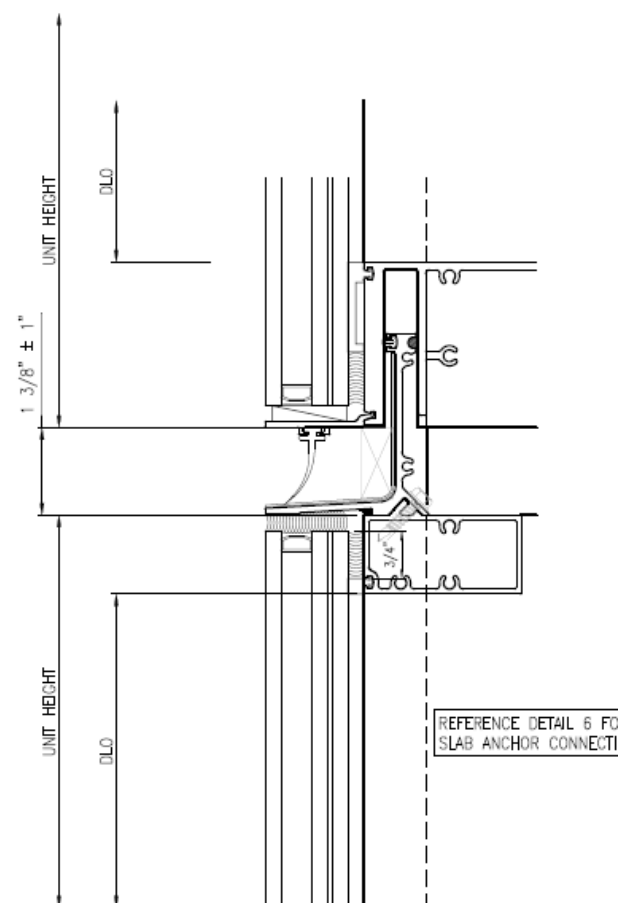


1A SILL (BUTT-GLAZED)  
Scale: 6" = 1'-0"





6 STACK JOINT (CAPTURED)  
SECTION Scale: 6" = 1'-0"



7 STACK JOINT (BUTT-GLAZED)  
SECTION Scale: 6" = 1'-0"