



Series 275

Fixed and Single Hung

The **Sun Metals Series 275 Window** is a 2-3/4" **Impact-Resistant** framed glazing system available in **Fixed** and **Single-Hung** Window configurations. This glazing system offers designers and building owners a high-performance, attractive solution for designs that require an expansive wall of glass.

The **Series 275 Window System** provides exceptional structural, air, and water performance to meet the toughest industry standards. The system is designed to accommodate various glass types and thicknesses depending on the desired performance of the system and project requirements.

Product Features

- Commercial grade
- **Impact –Resistant**
- Pre-glazed construction
- Equal leg framing
- Screw splined construction
- Interior/Exterior glazing
- Back leg tab for easy installation. No removing of balancers.
- Standard colors: white, silver, bronze
- Glazing & Sealing in a controlled factory environment.
- Insulated Laminated, laminated and monolithic glazing available.



Product Options

- Class 1 anodized finishes
- Duracron baked enamel
- Kynar 500 standard and custom colors
- Turtle code compliant glazing
- 5/16" & 9/16" Impact Glazing
- Tinted and Low-E coating
- Single, double or internal muntins
- Receptor and Panning systems available



Series 275

Fixed and Single Hung

Performance Data	Fixed
Air Infiltration @ 1.57 psf	0.16 scfm/ft ²
Water	15 psf
Design Loads	+100/-120 psf
Forced Entry	10

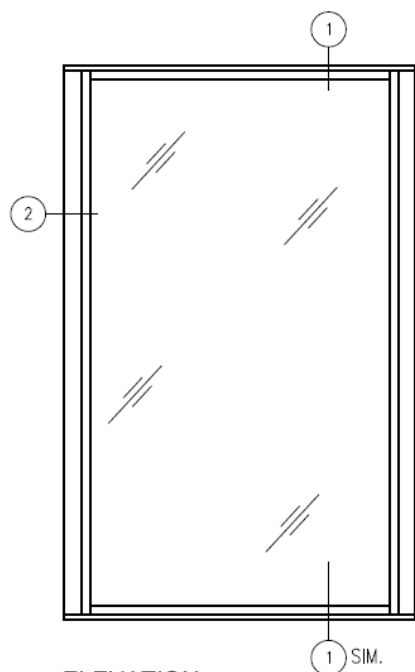
Sun Metals Systems
5008 Tampa West Blvd
Tampa FL 33634

www.SunMetalsSystems.com
813-889-0718

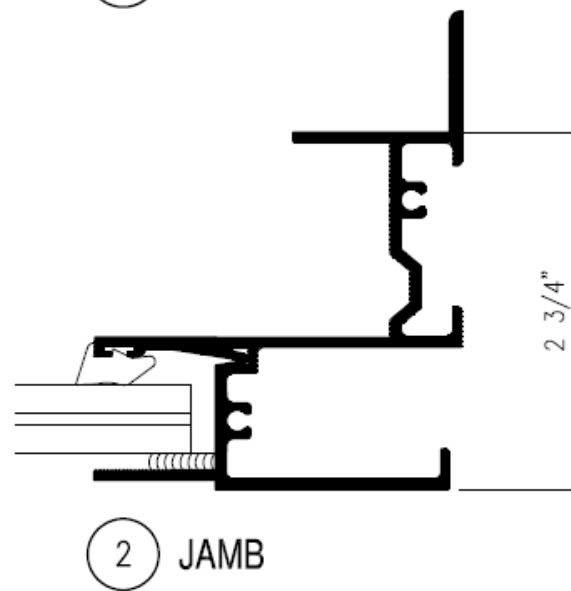
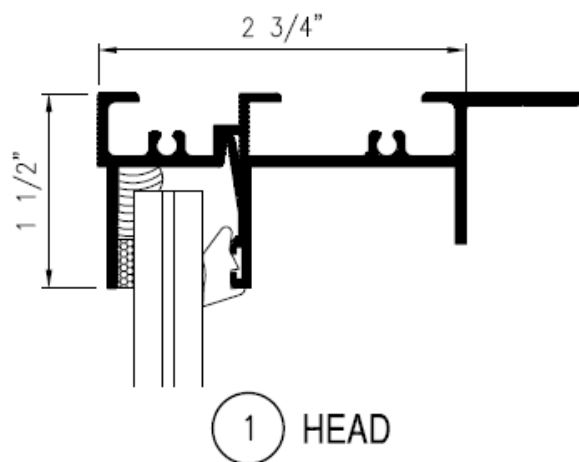




SERIES 275 - FIXED



ELEVATION



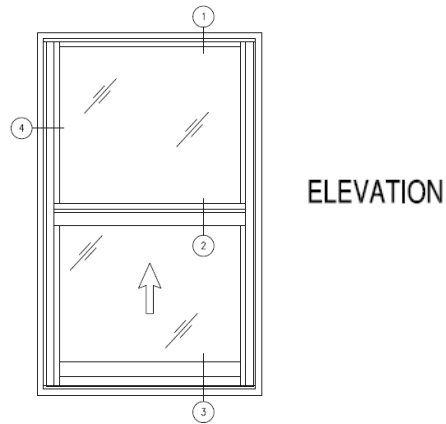
www.SunMetalsSystems.com

5008 Tampa West Blvd, Tampa FL 33634

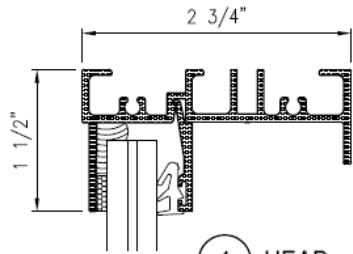
813-886-0240



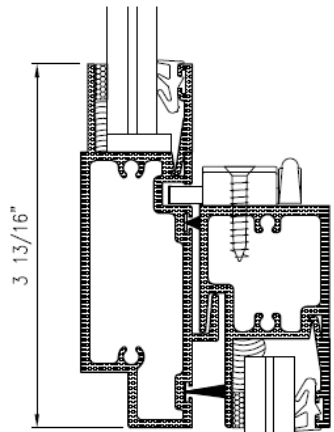
SERIES 275 - SINGLE HUNG



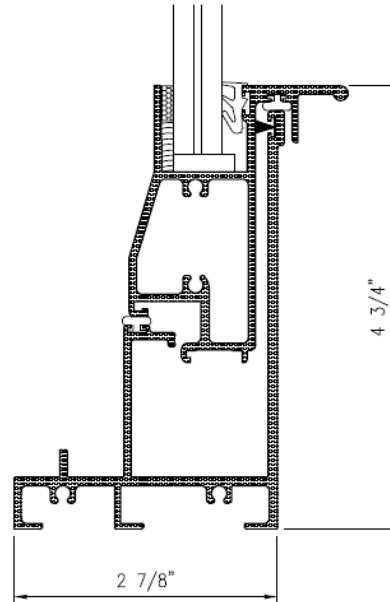
ELEVATION



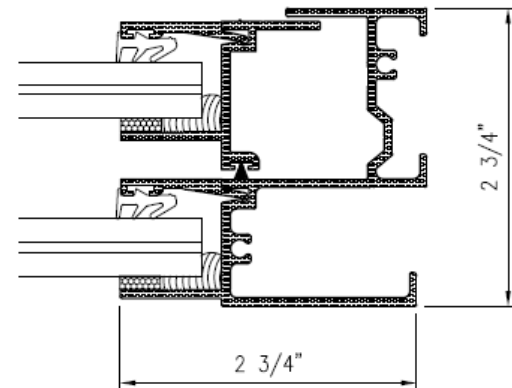
1 HEAD



2 MEETING RAIL



3 SILL



4 JAMB