



# Series 400

Fixed and Hung Windows

The **Sun Metals Series 400 Window** is a 4" Thermally broken framing system available in a **Fixed, Single, or Double-Hung** configuration. This glazing system offers designers and building owners a high-performance, attractive solution for designs that require an expansive wall of glass.

The **Series 400 Window System** provides exceptional structural, air, and water performance to meet the toughest industry standards. The system is designed to accommodate various glass types and thicknesses depending on the desired performance of the system and project requirements.

## Product Features

- **MADE IN USA**
- **Large and Small Impact**
- Pre-glazed construction
- Equal leg framing
- Screw splined construction
- Interior/Exterior glazing
- Also available as Double or Triple hung.
- Standard colors: white, silver, bronze
- Glazing & Sealing in a controlled factory environment.
- Insulated Laminated and monolithic glazing available.





## Product Options

- Kynar 500 standard and custom colors
- Turtle code compliant glazing
- 5/16", 9/16", 1-1/16" Impact Glazing
- Tinted and Low-E coating
- Single, double or internal muntins
- Receptor and Panning systems available



# Series 400

## Fixed and Hung Windows

## Performance Data

## Hung Thermal

Air Infiltration @ 1.57 psf

0.002 scfm/ft<sup>2</sup>

Water

15 psf

Design Loads

+/-65 psf

Forced Entry

10

U-Factor

.55 btu (glazing dependent)

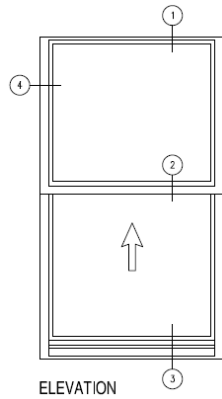
CRF

48

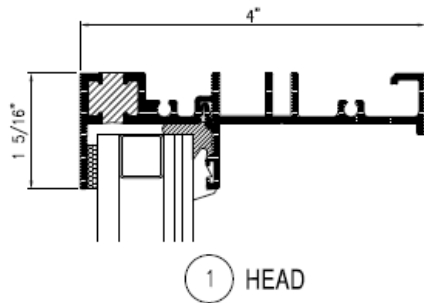
Sun Metals Systems  
5008 Tampa West Blvd  
Tampa FL 33634

[www.SunMetalsSystems.com](http://www.SunMetalsSystems.com)  
813-889-0718

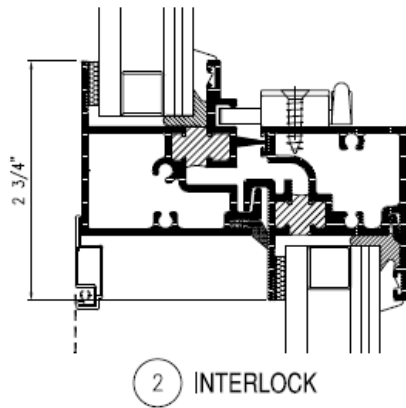




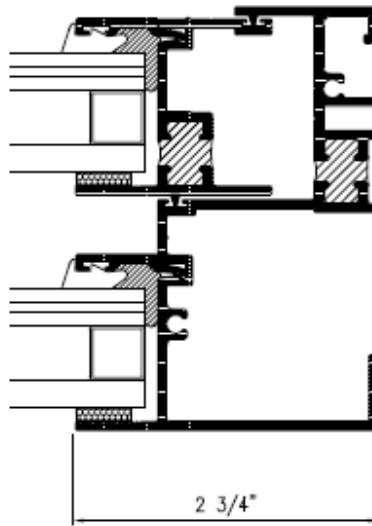
ELEVATION



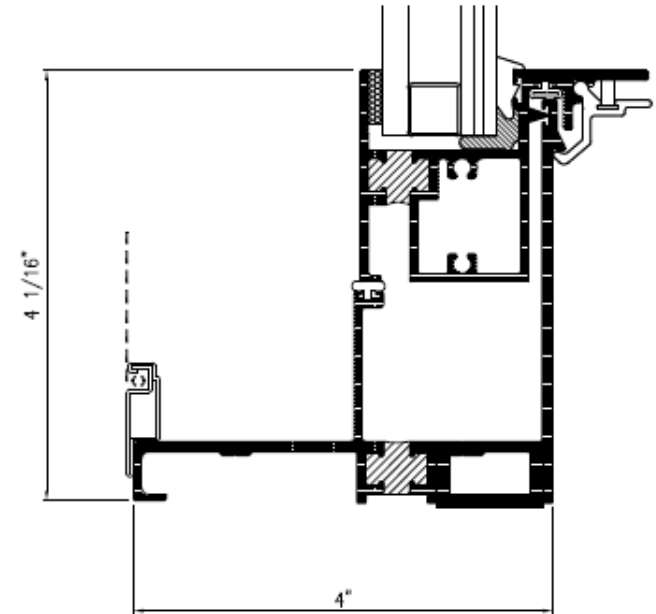
1 HEAD



2 INTERLOCK



4 JAMB



3 SILL